

GLOBAL OVERVIEW | SELECTED INDICES

SOUTH AFRICAN INDICES						
	CLOSE	PREVIOUS	1D%	5D%	1M%	YTD%
All Share	83760.08	82718.58	1.26	2.56	-0.05	8.93
Top 40	75810.20	74844.95	1.29	2.32	-1.12	7.54
Financial 15	21028.10	20921.35	0.51	1.21	2.48	17.65
Industrial 25	113388.64	111588.72	1.61	2.09	0.54	9.33
Resource 10	56031.72	55029.88	1.82	5.56	-7.10	-2.61
Mid Cap	89210.55	88321.25	1.01	4.11	1.29	10.94
Small Cap	87952.86	87031.68	1.06	2.97	6.85	21.32
Banks	13203.88	13112.91	0.69	1.07	1.40	20.60
Retailers	7576.00	7455.91	1.61	4.88	4.86	21.54
Property (J253) - TR	2425.68	2411.48	0.59	2.20	10.02	30.15

AMERICAN INDICES						
	CLOSE	PREVIOUS	1D%	5D%	1M%	YTD%
Dow Jones	42025.19	41503.10	1.26	2.26	2.76	11.50
Nasdaq	18013.98	17573.30	2.51	2.53	0.77	20.00
S&P 500	5713.64	5618.26	1.70	2.11	1.88	19.79
US VIX	16.33	18.23	-10.42	-4.34	11.47	31.16

EUROPEAN INDICES						
	CLOSE	PREVIOUS	1D%	5D%	1M%	YTD%
CAC 40	7615.41	7444.18	2.30	2.43	1.51	0.96
DAX 30	19002.38	18711.49	1.55	2.61	3.15	13.44
Eurostoxx 50	4937.60	4837.10	2.08	2.67	1.31	9.20
FTSE	8328.72	8253.68	0.91	1.06	-0.34	7.70

ASIAN INDICES						
	CLOSE	PREVIOUS	1D%	5D%	1M%	YTD%
Hang Seng	18013.16	17660.02	2.00	4.48	2.52	5.67
Nikkei 225	37155.33	36380.17	2.13	0.87	-0.62	11.03
Shanghai	2736.02	2717.28	0.69	0.70	-5.45	-8.03

EARLY MORNING MARKETS						
	LAST	CLOSE	% CHG	1D%	5D%	YTD%
TENCENT	387.20	388.80	-0.41	2.32	4.35	33.98
BHP AUS	4051.00	4019.00	0.80	2.55	3.56	-15.92

NOTE : 5D% and 1M% are rolling percentage moves

INTERNATIONAL ECONOMIC CALENDAR | SELECTED EVENTS

TIME	AREA	TODAY'S EVENTS & RELEASES	PERIOD	EXP.	PREV.
8:00	GB	Retail Sales m/m	Aug	0.20%	0.50%
17:00	EA	ECB President Lagarde Speech	---	---	---
20:00	US	Fed Harker Speech	---	---	---
---	---	---	---	---	---
---	---	---	---	---	---

TIME	AREA	PREVIOUS SESSION'S RELEASES	PERIOD	EXP.	ACT.
13:00	ZA	Building Permits y/y	Jul	6.00%	5.50%
13:00	GB	BoE Interest Rate Decision	---	5.00%	5.00%
14:30	US	Initial Jobless Claims	Sep	234K	219K
15:00	ZA	Interest Rate Decision	---	8.00%	8.00%
15:00	ZA	Prime Overdraft Rate	---	11.50%	11.50%

JSE ALL SHARE | BEST AND WORST ONE-DAY PERFORMERS

BEST ONE-DAY % PERFORMERS						
	CODE	CLOSE	1D%	5D%	YTD%	
Bytes Technology Grp PLC	BYI	12014	9.53	14.20	-16.11	
Famous Brands Ltd	FBR	5869	7.16	4.34	1.31	
Southern Sun LTD	SSU	745	6.43	9.56	41.90	
Montauk Renewables Inc	MKR	8850	6.37	9.26	-48.55	
Impala Platinum Hlgs Ltd	IMP	9823	6.33	27.04	7.63	
Anglo American Plat Ltd	AMS	59742	5.27	11.71	-38.03	

WORST ONE-DAY % PERFORMERS						
	CODE	CLOSE	1D%	5D%	YTD%	
Transaction Capital Ltd	TCP	240	-4.76	-1.23	-69.92	
Metair Investments Ltd	MTA	1442	-4.31	-5.07	-18.76	
Lighthouse Properties plc	LTE	794	-1.98	-0.87	8.03	
British American Tob plc	BTI	65284	-1.95	-5.52	20.56	
Remgro Ltd	REM	14583	-1.92	0.23	-10.25	

DIVIDEND DATA

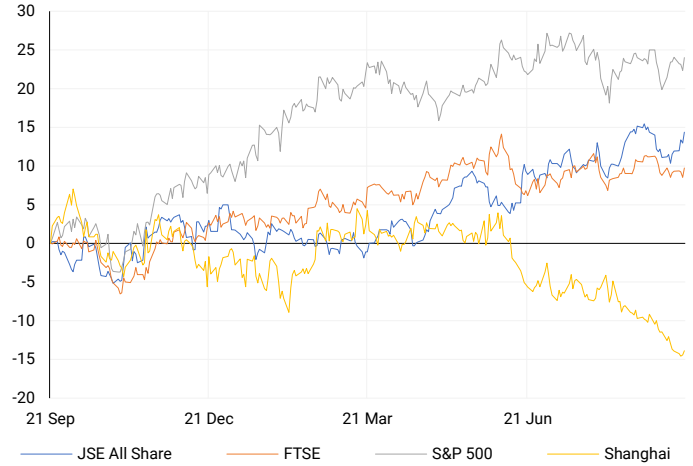
COMPANY	CODE	EXPECTED DIVIDEND	COMPANY	CODE	EXPECTED DIVIDEND
Bid Corporation	BID	565 ZARc	Sun International	SUI	161 ZARc
British American Tobacco plc	BTI	58.8 GBPp	The Bidvest Group	BVT	447 ZARc
Cashbuild	CSB	236 ZARc	Woolworths Holdings	WHL	117 ZARc
City Lodge Hotels	CLH	9 ZARc	---	---	---
Shoprite Holdings	SHP	445 ZARc	---	---	---

SOURCES | JSE, IRESS, MONEYWEB, CNBC, BBC, CNN

PLEASE SEE THE BOTTOM OF THE LAST PAGE FOR THE FULL DISCLAIMER

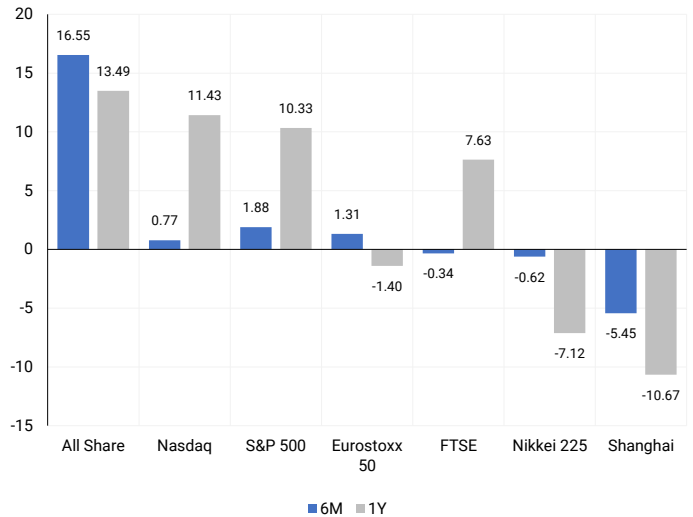
INTERNATIONAL INDICES

Normalised percentage performances - In rand terms



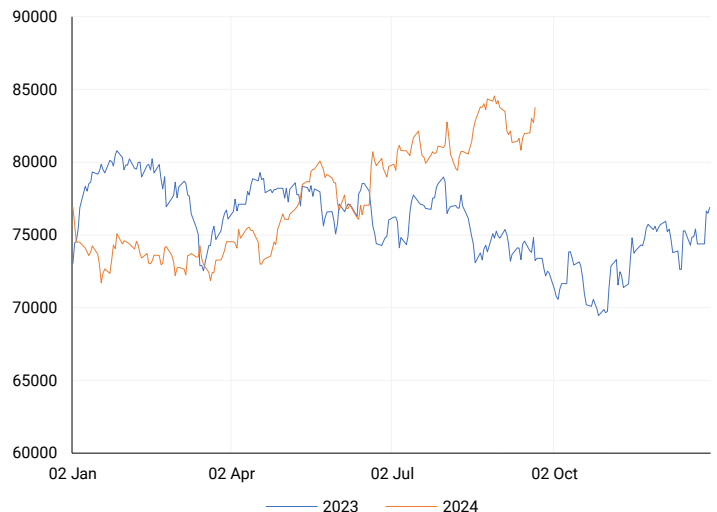
INTERNATIONAL INDICES

6-month & 1-year percentage performances



JSE ALL SHARE INDEX

2023 v 2024 to date



Last date to trade Mon, 23 September

## LOCAL EQUITIES | JSE LARGE CAP COMPANIES (Cents Per Share)

COMPANY	CLOSE	PREVIOUS	1D%	5D%	1M%	YTD%
Absa Group Limited	17424	17081	2.01	4.49	5.23	6.43
Anglo American plc	50900	49077	3.71	6.11	-1.51	7.50
Anglo American Plat Ltd	59742	56750	5.27	11.71	-13.47	-38.03
Anglogold Ashanti Ltd	48306	48098	0.43	-3.24	-13.33	36.69
Anheuser-Busch InBev SA NV	111360	112200	-0.75	-3.60	2.98	-7.21
BHP Group Limited	48221	46779	3.08	4.36	0.48	-23.87
BID Corporation Ltd	44402	44400	0.00	0.24	1.35	4.07
British American Tob plc	65284	66580	-1.95	-5.52	1.73	20.56
Compagnie Fin Richemont	242780	245700	-1.19	-2.89	-12.66	-5.45
Capitec Bank Hldgs Ltd	301601	299500	0.70	0.03	4.72	48.84
Discovery Ltd	15900	15870	0.19	2.53	5.89	10.66
Firststrand Ltd	8330	8358	-0.34	-3.36	-1.54	13.32
Gold Fields Ltd	25506	25680	-0.68	4.32	-15.26	-8.18
Glencore plc	9053	8816	2.69	4.31	-5.64	-18.92
Impala Platinum Hlgs Ltd	9823	9238	6.33	27.04	11.06	7.63
Kumba Iron Ore Ltd	34209	34134	0.22	-0.44	-5.92	-44.36
Mondi plc	33347	33110	0.72	1.07	-2.09	-8.13
MTN Group Ltd	9548	9436	1.19	2.94	5.76	-17.33
Naspers Ltd -N-	367447	352500	4.24	4.60	0.67	17.47
Prosus N.V.	66043	63396	4.18	4.24	0.39	17.85
South32 Limited	3800	3705	2.56	3.37	7.07	-9.93
Standard Bank Group Ltd	24417	24030	1.61	6.54	2.94	17.33
Shoprite Holdings Ltd	30390	30164	0.75	1.70	-1.17	10.49
Sanlam Limited	8655	8659	-0.05	-0.21	1.64	18.89
Sasol Limited	12721	12455	2.14	6.27	-7.50	-31.35
Sibanye Stillwater Ltd	1862	1823	2.14	20.21	-2.56	-25.22
Vodacom Group Ltd	11136	11140	-0.04	0.65	3.80	5.06

## SOUTH AFRICAN MARKET SUMMARY

### SELECTED ITEMS

The Johannesburg Stock Exchange's Top-40 index closed 1.3% higher, following the South African Reserve Bank's 25 basis point rate cut, as expected. The central bank, however, maintained a cautious outlook despite inflation falling to 4.4% in August, the lowest since April 2021. On the corporate side, JSE-listed Discovery reported a 17% rise in normalized operating profit for the year ended June 2024, increasing its dividend by 38%.

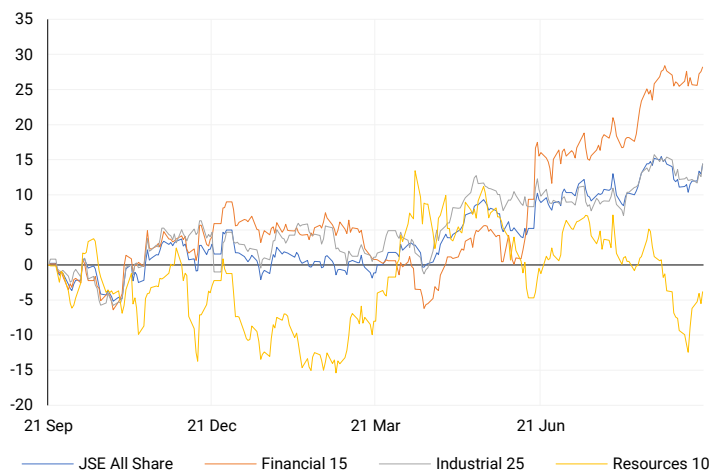
### JSE ALL SHARE

One-year



### LOCAL INDICES

Normalised percentage performances



### EXPECTED COMPANY REPORTING SCHEDULE

COMPANY	CODE	RELEASE	DATE
Remgro	REM	Final	20 Sep '24
Gemfields	GML	Interim	22 Sep '24
Texton	TEX	Final	23 Sep '24
Old Mutual	OMU	Interim	26 Sep '24
London Finance& Investment Group	LNF	Final	27 Sep '24

### BANK AND OTHER SELECTE PREFERENCE SHARES

COMPANY	CODE	CLOSE	CLEAN YIELD	NEXT LDT (Est.)
Investec Limited	INPR	8850	11.24	Thu, 06 Jun '24
Standard Bank	SBPP	8801	11.15	Thu, 05 Sep '24
Absa	ABSP	81057	11.48	Thu, 12 Sep '24
Capitec	CPIP	10000	9.69	Thu, 19 Sep '24
Steinhoff	SHFF	9734	10.47	Thu, 17 Oct '24
Grindrod	GNDP	8979	12.22	Thu, 19 Sep '24
Netcare	NTCP	8200	11.82	Thu, 31 Oct '24
Discovery	DSBP	9499	11.91	Thu, 19 Sep '24
Invicta	IVTP	---	13.41	Thu, 27 Jun '24

### LOCAL SENS ANNOUNCEMENTS

#### SELECTED RELEASE

#### DISCOVERY LIMITED – Reviewed condensed consolidated results

For the year ending June 30, 2024, the group's financial performance improved significantly. Normalized profit from operations increased by 17% to R11.6 billion, while profit attributable to ordinary shareholders rose by 12% to R7.3 billion. Headline earnings grew by 7%, reaching R7.2 billion, and normalized headline earnings saw a 15% boost to R7.3 billion. Basic earnings per share increased by 11%, and core new business annualized premium income was up by 18%. The group's net asset value grew 16% to R57.7 billion, and the embedded value increased by 12% to R110.4 billion. A final dividend of 152 cents per share was declared, up 38%.

DSY | 0.19% OPEN | 15860c HIGH | 16089c LOW | 15754c CLOSE | 15900c TIME | 09:00

#### REMGRO LIMITED – Summary of audited results

Key highlights for the year ending June 30, 2024, include a 10% increase in the ordinary dividend per share to 264 cents and a 1% rise in intrinsic net asset value per share to R251.01. However, headline earnings per share fell by 18.8% to 1 018 cents, and earnings per share dropped significantly by 86.9% to 224 cents.

REM | -1.92% OPEN | 14222c HIGH | 15030c LOW | 14177c CLOSE | 14583c TIME | 07:05

#### MUSTEK LIMITED – Financial results

Key results show a challenging year, with revenue dropping 16% to R8.51 billion and gross profit margin decreasing to 12.2% from 13.9%. Headline earnings per share fell sharply by 82.1% to 67.13 cents, while basic earnings per share declined by 90.1% to 37.31 cents. The dividend per share was reduced by 90% to 7.5 cents. However, the net asset value per share increased by 2.8% to 2 801.15 cents.

MST | 5.68% OPEN | 1270c HIGH | 1395c LOW | 1270c CLOSE | 1395c TIME | 09:40

**LOCAL EQUITIES | JSE MID CAP COMPANIES** (Cents Per Share)

COMPANY	CODE	CLOSE	PREVIOUS	1D%	1M%	YTD%
Aspen Pharmacare Hldgs Ltd	APN	19180	19049	0.69	-17.51	-5.75
African Rainbow Min Ltd	ARI	17752	17428	1.86	-6.96	-11.24
AVI Ltd	AVI	10739	10532	1.97	6.94	30.85
Barloworld Ltd	BAW	8309	8330	-0.25	-11.49	5.18
Bidvest Ltd	BVT	28188	28252	-0.23	-1.38	11.73
Bytes Technology Grp PLC	BYI	12014	10969	9.53	8.64	-16.11
Capital&Counties Prop plc	CCO	3540	3508	0.91	4.61	8.92
Clicks Group Ltd	CLS	38879	38400	1.25	9.21	19.37
Dis-Chem Pharmacies Ltd	DCP	3623	3550	2.06	-1.60	18.05
Exxaro Resources Ltd	EXX	15771	15603	1.08	-5.76	-22.87
Fortress Real Est INV B	FFB	2072	2029	2.12	18.81	44.29
Growthpoint Prop Ltd	GRT	1405	1400	0.36	4.07	20.29
Harmony GM Co Ltd	HAR	17386	17284	0.59	-9.83	45.38
Hammerson plc	HMN	714	708	0.85	8.18	5.00
Investec Ltd	INL	13672	13648	0.18	-0.44	8.86
Investec plc	INP	13609	13560	0.36	-1.24	8.05
Italtile Ltd	ITE	1217	1189	2.35	-2.80	8.66
Life Healthc Grp Hldgs Ltd	LHC	1582	1563	1.22	14.06	-13.88
MultiChoice Group Ltd	MCG	10726	10726	0.00	-2.22	32.39
Montauk Renewables Inc	MKR	8850	8320	6.37	8.34	-48.55
Mr Price Group Ltd	MRP	24552	24153	1.65	5.48	56.57
Momentum Met Hldgs Ltd	MTM	2855	2832	0.81	4.85	30.42
Ninety One Plc	N91	3890	3828	1.62	0.26	-9.79
Nedbank Group Ltd	NED	29319	29141	0.61	-1.30	35.59
Northam Platinum Hldgs Ltd	NPH	11010	10857	1.41	-12.51	-21.60
NEPI Rockcastle N.V.	NRP	14369	14245	0.87	3.28	13.70
Netcare Limited	NTC	1439	1428	0.77	6.59	1.05
Ninety One Limited	NY1	3919	3850	1.79	2.73	-8.80
Old Mutual Limited	OMU	1290	1283	0.55	4.20	-1.23
OUTsurace Group Ltd	OUT	5714	5670	0.78	17.72	35.40
Pick n Pay Stores Ltd	PIK	2618	2525	3.68	10.93	12.51
Pepkor Holdings Ltd	PPH	2320	2299	0.91	9.13	18.19
Quilter Plc	QLT	3058	3064	-0.20	-8.17	25.95
Redefine Properties Ltd	RDF	505	500	1.00	12.98	31.17
Remgro Ltd	REM	14583	14869	-1.92	1.36	-10.25
Resilient REIT Limited	RES	5980	5980	0.00	12.83	35.02
Reinet Investments S.C.A	RNI	47526	47359	0.35	1.43	1.94
Sappi Ltd	SAP	4800	4756	0.93	6.45	8.60
Santam Limited	SNT	35133	35200	-0.19	-0.09	22.60
The Spar Group Ltd	SPP	13642	13145	3.78	8.17	15.71
Sirius Real Estate Ltd	SRE	2310	2307	0.13	3.59	4.29
Tiger Brands Ltd	TBS	24088	24000	0.37	5.90	19.67
Transaction Capital Ltd	TCP	240	252	-4.76	-18.64	-69.92
The Foschini Group Limited	TFG	14748	14428	2.22	4.77	32.91
Thungela Resources Ltd	TGA	10388	10437	-0.47	-15.11	-32.46
Telkom SA SOC Ltd	TKG	2676	2668	0.30	8.16	-10.02
Truworths Int Ltd	TRU	9886	9852	0.35	1.75	32.97
Woolworths Holdings Ltd	WHL	6654	6500	2.37	1.36	-7.84
Zeda Limited	ZZD	1371	1365	0.44	9.68	7.53

**LOCAL EQUITIES | JSE SMALL CAP COMPANIES** (Cents Per Share)

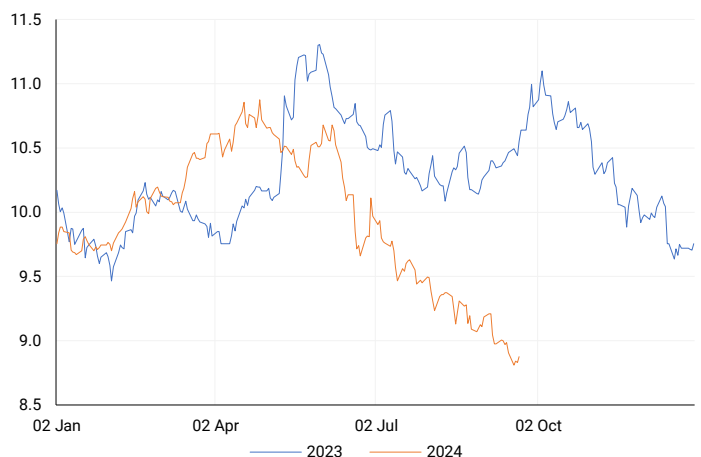
COMPANY	CODE	CLOSE	PREVIOUS	1D%	1M%	YTD%
ArcelorMittal SA Limited	ACL	119	120	-0.83	-3.25	-27.44
ADVTECH Ltd	ADH	3022	3024	-0.07	-2.30	23.15
Altron Limited A	AEL	1699	1652	2.85	-1.56	65.76
AECI Limited	AFE	10155	10346	-1.85	-4.67	-7.42
Alexander Forbes Grp Hldgs	AFH	673	665	1.20	-3.17	1.97
Afrimat Limited	AFT	6799	6705	1.40	6.89	7.92
African Rainbow Cap Inv	AIL	730	735	-0.68	18.70	49.28
Adcock Ingram Hldgs Ltd	AIP	6500	6551	-0.78	13.08	8.15
Astral Foods Ltd	ARL	17954	17765	1.06	3.80	22.49
Attacq Limited	ATT	1332	1320	0.91	19.78	44.47
Brait PLC	BAT	123	118	4.24	39.77	-32.42
Blue Label Telecoms Ltd	BLU	473	473	0.00	7.99	21.91
Burstone Group	BTN	932	930	0.22	16.50	16.50
Coronation Fund Mngrs Ld	CML	3679	3639	1.10	-5.67	18.07
Curro Holdings Limited	COH	1304	1300	0.31	6.28	11.93
Cashbuild Ltd	CSB	16600	16196	2.49	-0.09	-0.56
DRD Gold Ltd	DRD	1680	1596	5.26	-3.23	6.53
Datatec Ltd	DTC	3653	3571	2.30	4.31	-9.80
Emira Property Fund Ltd	EMI	1067	1079	-1.11	0.38	24.80
Equites Prop Fund Ltd	EQU	1463	1449	0.97	9.10	4.87
Famous Brands Ltd	FBR	5869	5477	7.16	2.96	1.31
Fairvest Limited B	FTB	462	458	0.87	9.22	34.30
Grindrod Ltd	GND	1570	1550	1.29	0.26	37.00
Hosken Cons Inv Ltd	HCI	18623	18233	2.14	2.81	-8.08
Hudaco Industries Ltd	HDC	19085	18578	2.73	5.78	18.81
Hyprop Inv Ltd	HYP	4454	4373	1.85	26.35	43.17
JSE Ltd	JSE	12000	11971	0.24	9.41	29.81
KAP Industrial Hldgs Ltd	KAP	337	333	1.20	9.42	28.63
Karooooo Ltd	KRO	71499	71602	-0.14	9.98	50.53
PSG Konsult Limited	KST	1753	1750	0.17	5.48	14.20
Libstar Holdings Ltd	LBR	410	400	2.50	2.50	17.14
Lighthouse Properties plc	LTE	794	810	-1.98	-3.05	8.03
Industrials REIT Limited	MLI	2.3	2.4	-4.17	125.54	228.57
MAS P.L.C	MSP	1844	1839	0.27	4.48	6.53
Metair Investments Ltd	MTA	1442	1507	-4.31	5.64	-18.76
Motus Holdings Ltd	MTH	11999	11848	1.27	7.51	18.22
Murray & Roberts Hldgs	MUR	294	289	1.73	-1.34	97.32
Oceana Group Ltd	OCE	6638	6630	0.12	-6.28	-6.07
Omnia Holdings Ltd	OMN	6334	6302	0.51	1.17	-3.11
Pan African Resource plc	PAN	769	746	3.08	12.59	88.02
PPC Limited	PPC	395	378	4.50	-1.25	-1.00
Raubex Group Ltd	RBX	5725	5550	3.15	29.09	106.53
RFG Holdings Limited	RFG	1511	1496	1.00	-2.45	11.93
Reunert Ltd	RLO	7676	7760	-1.08	2.09	28.06
SA Corp Real Estate Ltd	SAC	310	308	0.65	14.39	33.62
Super Group Ltd	SPG	2466	2470	-0.16	-7.36	-17.11
Stor-Age Prop REIT Ltd	SSS	1513	1517	-0.26	8.85	15.85
Southern Sun LTD	SSU	745	700	6.43	20.94	41.90
Sun International Ltd	SUI	4603	4500	2.29	16.12	12.27
Tharisa plc	THA	1775	1776	-0.06	-5.59	17.47
Tsogo Sun Gaming Ltd	TSG	1277	1223	4.42	8.50	4.24
Vukile Property Fund Ltd	VKE	1835	1868	-1.77	8.26	29.96
Wilson Bayly Hlm-Ovc Ltd	WBO	22250	22312	-0.28	20.36	71.07

**10-YEAR BOND YIELD | SELECTED ITEMS** (Basis Point Change)

REGION	YIELD	1D	1M	1Y
United States	3.71%	0	-16	—
United Kingdom	3.89%	5	-3	-45
Germany	2.19%	1	-5	-54
Japan	0.84%	2	-3	—
South African 10Y	8.85%	1	-44	-161

**SOUTH AFRICAN 10-YEAR**

2023 vs 2024 to date

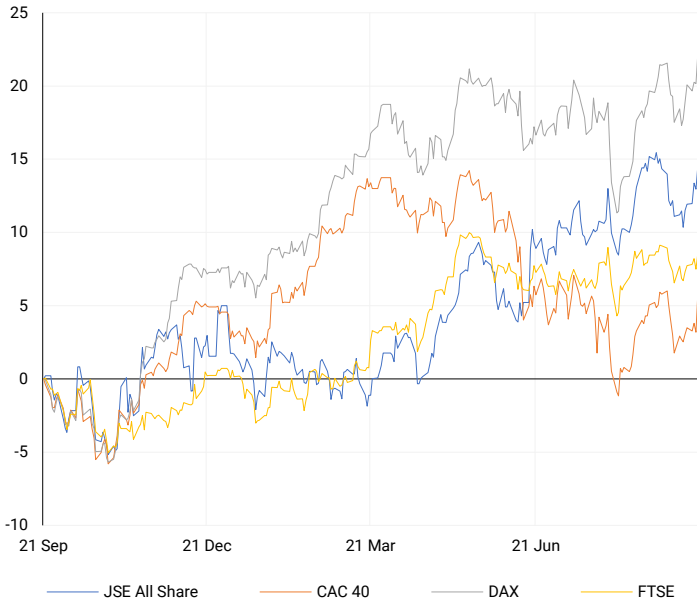


**GLOBAL INTEREST RATES | SELECTED ITEMS**

REGION	DATE CHANGED	CURRENT RATE
United States	Jul '23	5.25%-5.50%
United Kingdom	Aug '24	5.00%
European	Sep '24	3.65%
SA Repo Rate	Sep '24	8.00%
SA Prime Rate	Sep '24	11.50%

## EUROPEAN INDICES

Normalised percentage performances

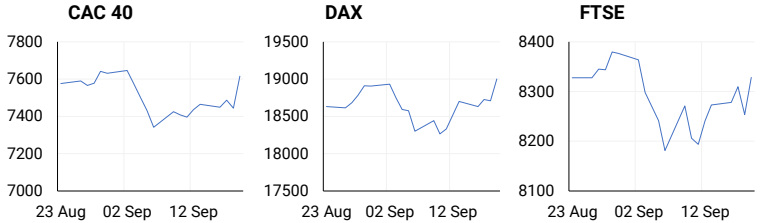


## EUROPEAN MARKET SUMMARY

### SELECTED ITEMS

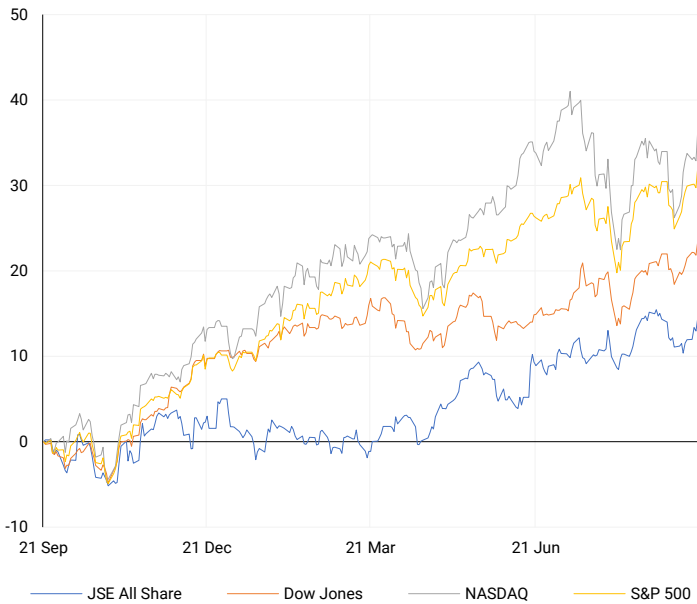
European markets closed higher on Thursday as investors reacted to the Bank of England's decision to keep interest rates steady at 5%, as expected. Similarly, Norway's central bank held its rate at a 16-year high of 4.5% but signalled plans to lower borrowing costs starting next year.

EUROPEAN INDICES	CLOSE	PREVIOUS	1D%	5D%	1M%	YTD%
CAC 40	7615.41	7444.18	2.30	2.43	1.51	0.96
DAX 30	19002.38	18711.49	1.55	2.61	3.15	13.44
Eurostoxx 50	4937.60	4837.10	2.08	2.67	1.31	9.20
FTSE	8328.72	8253.68	0.91	1.06	-0.34	7.70



## AMERICAN INDICES

Normalised percentage performances



## AMERICAN MARKET SUMMARY

### SELECTED ITEMS

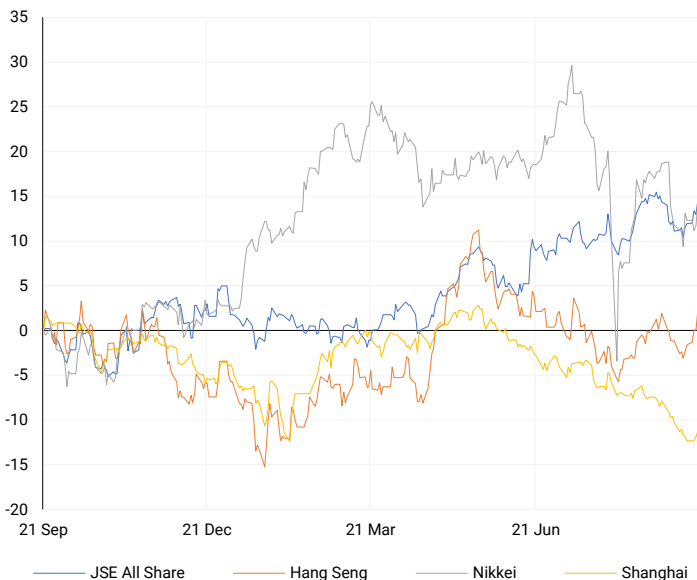
The S&P 500 reached a record high on Thursday, following a 50-basis point interest rate cut by the Federal Reserve, with expectations of further cuts ahead. The Dow Jones Industrial Average also hit a milestone, closing above 42,000 for the first time. BofA Global Research now predicts a total of 75 basis points in rate cuts by year-end, up from its earlier forecast of 50 bps. Historical data from Evercore ISI indicates that the S&P 500 has averaged a 14% gain in the six months following the start of a rate-cutting cycle since 1970.

AMERICAN INDICES	CLOSE	PREVIOUS	1D%	5D%	1M%	YTD%
Dow Jones	42025.19	41503.10	1.26	2.26	2.76	11.50
Nasdaq	18013.98	17573.30	2.51	2.53	0.77	20.00
S&P 500	5713.64	5618.26	1.70	2.11	1.88	19.79
US VIX	16.33	18.23	-10.42	-4.34	11.47	31.16



## ASIAN INDICES

Normalised percentage performances



## ASIAN MARKET SUMMARY

### SELECTED ITEMS

Asia-Pacific markets opened higher this morning, with Japan's Nikkei 225 leading the gains. Japan's core consumer price index rose 2.8% year-on-year, in line with expectations, up slightly from 2.7% the previous month. Excluding fresh food and energy, inflation stood at 2%. This is the last economic data before the Bank of Japan's meeting, where it is expected to keep interest rates at 0.25%. Meanwhile, China maintained its key lending rates, with the one-year loan prime rate at 3.35% and the five-year LPR at 3.85%.

ASIAN INDICES	CLOSE	PREVIOUS	1D%	5D%	1M%	YTD%
Hang Seng	18013.16	17660.02	2.00	4.48	2.52	5.67
Nikkei 225	37155.33	36380.17	2.13	0.87	-0.62	11.03
Shanghai	2736.02	2717.28	0.69	0.70	-5.45	-8.03



## COMMODITIES MARKET SUMMARY

### SELECTED ITEMS

Gold prices surged over 1% on Thursday, reaching an all-time high as the U.S. Federal Reserve kicked off its monetary easing cycle with a 0.5% rate cut, bringing prices close to the \$2,600 mark. Meanwhile, oil prices remained steady in early Asian trading today but were set to finish the week higher for the second consecutive time, driven by the Fed's rate cuts and decreasing global stockpiles.

COMMODITY	LAST	CLOSE	% CHG	1D%	5D%	YTD%
Brent Crude	74.71	74.84	-0.17	2.60	3.70	-2.91
Gold	2592.86	2586.75	0.24	1.07	1.09	25.39
Palladium	1086.31	1083.89	0.22	2.42	3.13	-1.22
Platinum	987.66	988.30	-0.06	1.65	0.54	0.11
Silver	31.04	30.79	0.81	2.36	3.08	29.44

## BRENT CRUDE

One-year



## PLATINUM

One-year



## GOLD

One-year



CURRENCY PAIR	LAST	CLOSE	% CHG	1D%	5D%	YTD%
USDZAR	17.52	17.48	0.20	-0.35	-1.65	-4.58
GBPZAR	23.28	23.22	0.24	0.17	-0.49	-0.32
EURZAR	19.55	19.52	0.14	0.08	-0.85	-3.30
AUDZAR	11.93	11.92	0.06	0.45	-0.26	-4.29
EURUSD	1.12	1.12	0.00	0.39	0.79	1.13
USDJPY	142.34	142.63	-0.20	0.24	0.57	1.13
GBPUSD	1.33	1.33	0.05	0.53	1.21	4.33
USDCHF	0.85	0.85	-0.11	0.19	-0.38	0.74

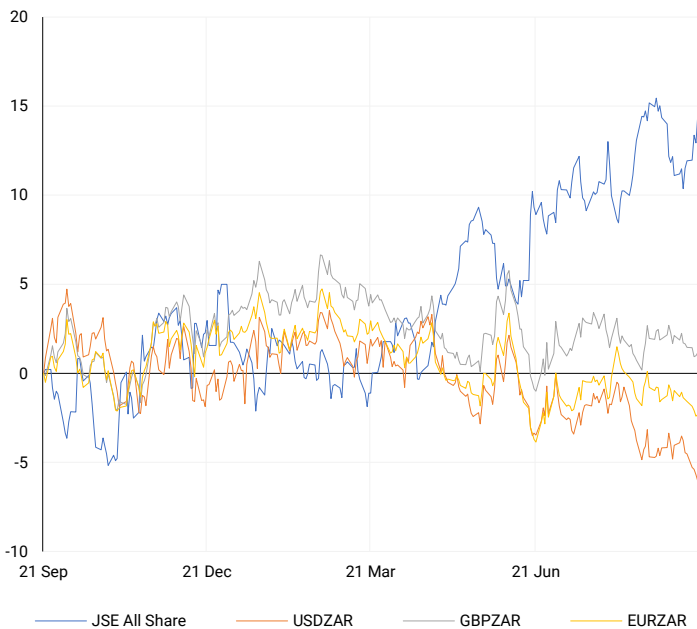
## CURRENCY MARKET SUMMARY

### SELECTED ITEMS

The South African rand maintained its early gains on Thursday after the South African Reserve Bank (SARB) cut interest rates for the first time in over four years, following the U.S. Federal Reserve's significant rate reduction. The U.S. dollar weakened, with the dollar index, which tracks the dollar against currencies like the yen and euro, dropping 0.41% to 100.61.

## CURRENCY PAIRS vs JSE ALL SHARE

Normalised percentage performances



## USDZAR

One-year



## EURUSD

One-year



SOURCES | JSE, IRESS, MONEYWEB, CNBC, BBC, CNN

**Disclaimer:** This note is prepared for Sanlam Private Wealth (Pty) Ltd, by K2013143132 (Pty) Ltd trading as ThompsonGreen. ThompsonGreen is an independent company contracted to Sanlam Private Wealth (Pty) Ltd. The views expressed in this note are those of ThompsonGreen and/or its analysts and not necessarily the views of Sanlam Private Wealth (Pty) Ltd, Sanlam or any officer or agent thereof. K2013143132 (Pty) Ltd trading as ThompsonGreen is a research house and not a registered broker, financial adviser or financial service provider. Our editors and customer services teams also do not give personal investment advice. The information in this document is general advice only and may not be appropriate to your particular investment objectives, financial situation or particular needs. Before investing, or if you are in any doubt about your personal situation, you should seek professional advice from a stockbroker or independent financial adviser authorised by the Financial Sector Conduct Authority.