

GLOBAL OVERVIEW | SELECTED INDICES

SOUTH AFRICAN INDICES						
	CLOSE	PREVIOUS	1D%	5D%	1M%	YTD%
All Share	83829.99	83760.08	0.08	2.26	0.06	9.02
Top 40	75830.21	75810.20	0.03	1.97	-1.05	7.57
Financial 15	21131.10	21028.10	0.49	2.52	3.60	18.23
Industrial 25	113433.36	113388.64	0.04	2.03	1.02	9.37
Resource 10	55891.78	56031.72	-0.25	2.31	-8.71	-2.85
Mid Cap	89643.22	89210.55	0.49	3.84	1.68	11.48
Small Cap	87558.89	87952.86	-0.45	2.22	5.83	20.78
Banks	13259.59	13203.88	0.42	2.64	2.31	21.11
Retailers	7802.35	7576.00	2.99	7.96	9.03	25.17
Property (J253) - TR	2408.99	2425.68	-0.69	0.16	9.29	29.26
AMERICAN INDICES						
	CLOSE	PREVIOUS	1D%	5D%	1M%	YTD%
Dow Jones	42063.36	42025.19	0.09	1.62	3.01	11.60
Nasdaq	17948.32	18013.98	-0.36	1.49	0.74	19.56
S&P 500	5702.55	5713.64	-0.19	1.36	1.88	19.55
US VIX	16.15	16.33	-1.10	-2.48	1.70	29.72
EUROPEAN INDICES						
	CLOSE	PREVIOUS	1D%	5D%	1M%	YTD%
CAC 40	7603.20	7615.41	-0.16	1.85	1.57	0.80
DAX 30	18720.01	19002.38	-1.49	0.11	2.02	11.75
Eurostoxx 50	4872.55	4937.60	-1.32	0.60	0.28	7.76
FTSE	8229.99	8328.72	-1.19	-0.52	-0.52	6.42
ASIAN INDICES						
	CLOSE	PREVIOUS	1D%	5D%	1M%	YTD%
Hang Seng	18258.57	18013.16	1.36	5.12	4.27	7.10
Nikkei 225	37723.91	37155.33	1.53	3.12	-0.89	12.73
Shanghai	2736.81	2736.02	0.03	1.21	-4.53	-8.00
EARLY MORNING MARKETS						
	LAST	CLOSE	% CHG	1D%	5D%	YTD%
TENCENT	387.00	388.60	-0.41	-0.05	3.68	33.91
BHP AUS	3979.00	4034.00	-1.36	0.37	1.87	-15.61

NOTE : 5D% and 1M% are rolling percentage moves

INTERNATIONAL ECONOMIC CALENDAR | SELECTED EVENTS

TIME	AREA	TODAY'S EVENTS & RELEASES	PERIOD	EXP.	PREV.
9:30	DE	HCOB Composite PMI Flash	Sep	48.30	48.40
10:30	GB	S&P Global Composite PMI Flash	Sep	53.00	53.80
15:45	US	S&P Global Composite PMI Flash	Sep	53.00	54.60
---	---	---	---	---	---
---	---	---	---	---	---
TIME	AREA	PREVIOUS SESSION'S RELEASES	PERIOD	EXP.	ACT.
8:00	GB	Retail Sales m/m	Aug	0.20%	1.00%
17:00	EA	ECB President Lagarde Speech	---	---	---
20:00	US	Fed Harker Speech	---	---	---
---	---	---	---	---	---
---	---	---	---	---	---

JSE ALL SHARE | BEST AND WORST ONE-DAY PERFORMERS

BEST ONE-DAY % PERFORMERS						
	CODE	CLOSE	1D%	5D%	YTD%	
Alexander Forbes Grp Hldgs	AFH	739	9.81	5.72	11.97	
Truworths Int Ltd	TRU	10610	7.32	14.67	42.70	
The Foschini Group Limited	TFG	15790	7.07	13.31	42.30	
DRD Gold Ltd	DRD	1754	4.40	16.16	11.22	
Mr Price Group Ltd	MRP	25582	4.20	8.86	63.14	
Adcock Ingram Hldgs Ltd	AIP	6750	3.85	2.27	12.31	
WORST ONE-DAY % PERFORMERS						
	CODE	CLOSE	1D%	5D%	YTD%	
Sasol Limited	SOL	12000	-5.67	-3.15	-35.24	
Cashbuild Ltd	CSB	15800	-4.82	-0.63	-5.35	
Sappi Ltd	SAP	4572	-4.75	-1.91	3.44	
Grindrod Ltd	GND	1498	-4.59	1.70	30.72	
Investec plc	INP	13150	-3.37	-1.39	4.41	

DIVIDEND DATA

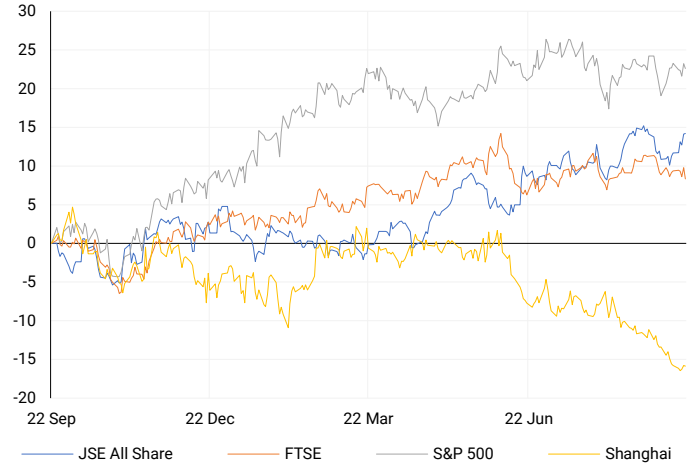
COMPANY	CODE	EXPECTED DIVIDEND	COMPANY	CODE	EXPECTED DIVIDEND
Bid Corporation	BID	565 ZARc	Sun International	SUI	161 ZARc
British American Tobacco plc	BTI	58.8 GBPp	The Bidvest Group	BVT	447 ZARc
Cashbuild	CSB	236 ZARc	Woolworths Holdings	WHL	117 ZARc
City Lodge Hotels	CLH	9 ZARc	---	---	---
Shoprite Holdings	SHP	445 ZARc	---	---	---

SOURCES | JSE, IRESS, MONEYWEB, CNBC, BBC, CNN

PLEASE SEE THE BOTTOM OF THE LAST PAGE FOR THE FULL DISCLAIMER

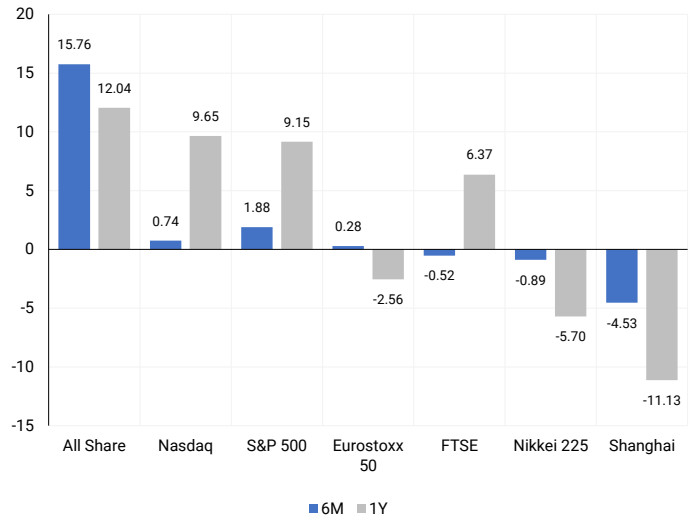
INTERNATIONAL INDICES

Normalised percentage performances - In rand terms



INTERNATIONAL INDICES

6-month & 1-year percentage performances



JSE ALL SHARE INDEX

2023 v 2024 to date



Last date to trade Mon, 23 September

LOCAL EQUITIES | JSE LARGE CAP COMPANIES (Cents Per Share)

COMPANY	CLOSE	PREVIOUS	1D%	5D%	1M%	YTD%
Absa Group Limited	17209	17424	-1.23	3.54	4.79	5.12
Anglo American plc	49368	50900	-3.01	1.61	-5.63	4.26
Anglo American Plat Ltd	60446	59742	1.18	6.40	-14.92	-37.30
Anglogold Ashanti Ltd	49273	48306	2.00	-1.70	-13.74	39.42
Anheuser-Busch InBev SA NV	110506	111360	-0.77	-3.80	2.30	-7.92
BHP Group Limited	47370	48221	-1.76	0.88	-1.21	-25.22
BID Corporation Ltd	44329	44402	-0.16	-1.26	2.94	3.90
British American Tob plc	65236	65284	-0.07	-5.49	1.23	20.47
Compagnie Fin Richemont	235773	242780	-2.89	-6.65	-16.72	-8.17
Capitec Bank Hldgs Ltd	305146	301601	1.18	1.97	5.95	50.59
Discovery Ltd	16424	15900	3.30	5.85	10.00	14.31
Firststrand Ltd	8475	8330	1.74	1.38	0.96	15.29
Gold Fields Ltd	26341	25506	3.27	4.78	-15.33	-5.17
Glencore plc	8829	9053	-2.47	0.10	-7.63	-20.92
Impala Platinum Hlgs Ltd	9686	9823	-1.39	11.95	7.23	6.12
Kumba Iron Ore Ltd	34105	34209	-0.30	-3.36	-5.59	-44.52
Mondi plc	32316	33347	-3.09	-1.80	-4.88	-10.98
MTN Group Ltd	9575	9548	0.28	2.13	6.98	-17.10
Naspers Ltd -N-	367897	367447	0.12	4.84	1.61	17.61
Prosus N.V.	66030	66043	-0.02	3.79	0.89	17.83
South32 Limited	3722	3800	-2.05	-1.59	3.97	-11.78
Standard Bank Group Ltd	24338	24417	-0.32	5.11	3.12	16.95
Shoprite Holdings Ltd	30027	30390	-1.19	0.30	-0.68	9.17
Sanlam Limited	8766	8655	1.28	1.88	4.20	20.41
Sasol Limited	12000	12721	-5.67	-3.15	-6.71	-35.24
Sibanye Stillwater Ltd	1810	1862	-2.79	4.75	-8.26	-27.31
Vodacom Group Ltd	11028	11136	-0.97	-1.41	2.11	4.04

SOUTH AFRICAN MARKET SUMMARY

SELECTED ITEMS

On Friday, the blue-chip Top-40 index on the Johannesburg Stock Exchange saw little movement. Earlier in the week, data showed that South Africa's annual inflation rate dropped to 4.4%—its lowest since April 2021—falling within the central bank's target range of 3% to 6%. In response, the South African Reserve Bank cut interest rates by 25 basis points, its first rate cut in over four years.

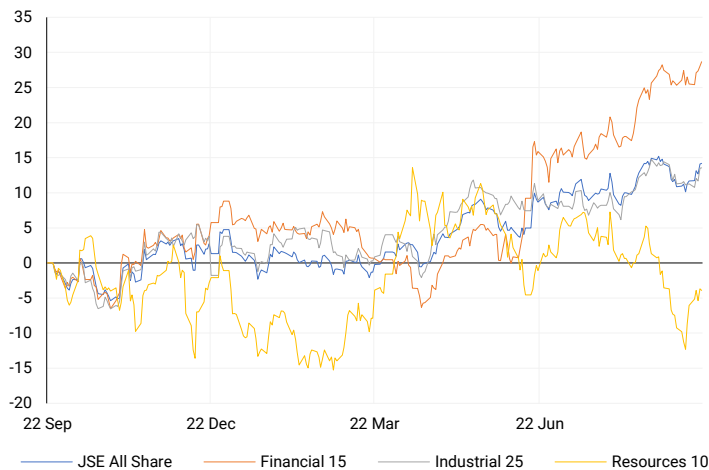
JSE ALL SHARE

One-year



LOCAL INDICES

Normalised percentage performances



EXPECTED COMPANY REPORTING SCHEDULE

COMPANY	CODE	RELEASE	DATE
Metair	MTA	Interim	23 Sep '24
Texton	TEX	Final	23 Sep '24
Old Mutual	OMU	Interim	26 Sep '24
London Finance & Investment Group	LNF	Final	27 Sep '24
Trellidor	TRL	Final	28 Sep '24

BANK AND OTHER SELECTE PREFERENCE SHARES

COMPANY	CODE	CLOSE	CLEAN YIELD	NEXT LDT (Est.)
Investec Limited	INPR	8860	11.24	Thu, 06 Jun '24
Standard Bank	SBPP	8900	11.15	Thu, 05 Sep '24
Absa	ABSP	81707	11.48	Thu, 12 Sep '24
Capitec	CPIP	10000	9.69	Thu, 19 Sep '24
Steinhoff	SHFF	9734	10.47	Thu, 17 Oct '24
Grindrod	GNDP	8979	12.22	Thu, 19 Sep '24
Netcare	NTCP	8200	11.82	Thu, 31 Oct '24
Discovery	DSBP	9400	11.91	Thu, 19 Sep '24
Invicta	IVTP	---	13.41	Thu, 27 Jun '24

LOCAL SENS ANNOUNCEMENTS

SELECTED RELEASE

INVESTEC LIMITED – Trading Statement

For the six months ending September 30, 2024, the Group expects an adjusted operating profit of £520-550 million, up 6.7% to 12.9% from the prior period. Adjusted earnings per share will range between 37.2p and 40.2p, while headline earnings per share are expected to be between 35.3p and 38.2p. Basic earnings per share will fall between 35.2p and 38.2p, a 45% to 50% decrease from the previous period, due to prior period gains from the UK Wealth & Investment combination. Credit quality remains strong, and costs are growing slower than income. The Group's operating profit is forecasted between £450 million and £482 million, with the Southern African business up 15% in Rands, while the UK business may see a 5%-11% decline. The Group's return on equity (ROE) will be 13%-14%, and return on tangible equity (ROTE) between 15.5%-16.5%, both within medium-term targets.

INL | -3.16% OPEN | 13400c HIGH | 13674c LOW | 13147c CLOSE | 13240c TIME | 08:00

CLIENTÈLE LIMITED – Condensed Financial Results

The company has declared dividends of 125 cents per share, with earnings per share at 98.39 cents. The embedded value per share stands at 1 803 cents, while recurring embedded value earnings are R654.6 million. The recurring return on embedded value is 12%, and the value of new business is R220 million. The embedded value risk discount rate is 14.3%, slightly higher than last year's 14.1%.

CLI | 0.08% OPEN | 1186c HIGH | 1186c LOW | 1186c CLOSE | 1186c TIME | 17:00

WESIZWE PLATINUM LIMITED – Trading Statement

The Wesizwe board has informed shareholders that for the six months ending June 30, 2024, the company expects earnings per share (EPS) and headline earnings per share (HEPS) to be between 1.40 cents and 13.32 cents, an increase of over 100% compared to the loss of 59.63 cents per share in the same period in 2023. This significant improvement is mainly due to unrealized foreign exchange gains on foreign-denominated loans.

WEZ | 10.00% OPEN | 49c HIGH | 59c LOW | 49c CLOSE | 55c TIME | 09:20

LOCAL EQUITIES | JSE MID CAP COMPANIES (Cents Per Share)

COMPANY	CODE	CLOSE	PREVIOUS	1D%	1M%	YTD%
Aspen Pharmacare Hldgs Ltd	APN	18978	19180	-1.05	-20.09	-6.74
African Rainbow Min Ltd	ARI	17718	17752	-0.19	-7.72	-11.41
AVI Ltd	AVI	10775	10739	0.34	7.36	31.29
Barloworld Ltd	BAW	8332	8309	0.28	-11.17	5.47
Bidvest Ltd	BVT	28400	28188	0.75	0.72	12.57
Bytes Technology Grp PLC	BYI	11846	12014	-1.40	6.35	-17.28
Capital&Counties Prop plc	CCO	3495	3540	-1.27	3.37	7.54
Clicks Group Ltd	CLS	38847	38879	-0.08	9.08	19.27
Dis-Chem Pharmacies Ltd	DCP	3703	3623	2.21	-0.08	20.66
Exxaro Resources Ltd	EXX	15740	15771	-0.20	-4.65	-23.02
Fortress Real Est INV B	FFB	2019	2072	-2.56	14.72	40.60
Growthpoint Prop Ltd	GRT	1393	1405	-0.85	4.27	19.26
Harmony GM Co Ltd	HAR	17950	17386	3.24	-10.57	50.10
Hammerson plc	HMN	734	714	2.80	11.04	7.94
Investec Ltd	INL	13240	13672	-3.16	-3.48	5.42
Investec plc	INP	13150	13609	-3.37	-4.71	4.41
Italtile Ltd	ITE	1206	1217	-0.90	-3.90	7.68
Life Healthc Grp Hldgs Ltd	LHC	1590	1582	0.51	13.82	-13.45
MultiChoice Group Ltd	MCG	10650	10726	-0.71	-2.54	31.45
Montauk Renewables Inc	MKR	8975	8850	1.41	10.53	-47.82
Mr Price Group Ltd	MRP	25582	24552	4.20	9.53	63.14
Momentum Met Hldgs Ltd	MTM	2911	2855	1.96	6.24	32.98
Ninety One Plc	N91	3906	3890	0.41	0.85	-9.42
Nedbank Group Ltd	NED	29577	29319	0.88	-0.11	36.78
Northam Platinum Hldgs Ltd	NPH	10658	11010	-3.20	-15.05	-24.10
NEPI Rockcastle N.V.	NRP	14497	14369	0.89	3.74	14.71
Netcare Limited	NTC	1453	1439	0.97	7.63	2.04
Ninety One Limited	NY1	3942	3919	0.59	3.06	-8.26
Old Mutual Limited	OMU	1295	1290	0.39	4.86	-0.84
OUTsurance Group Ltd	OUT	5734	5714	0.35	19.11	35.88
Pick n Pay Stores Ltd	PIK	2530	2618	-3.36	7.16	8.72
Pepkor Holdings Ltd	PPH	2334	2320	0.60	12.64	18.90
Quilter Plc	QLT	3065	3058	0.23	-7.18	26.24
Redefine Properties Ltd	RDF	491	505	-2.77	10.09	27.53
Remgro Ltd	REM	14610	14583	0.19	4.77	-10.08
Resilient REIT Limited	RES	5824	5980	-2.61	10.30	31.50
Reinet Investments S.C.A	RNI	47111	47526	-0.87	0.77	1.05
Sappi Ltd	SAP	4572	4800	-4.75	-2.87	3.44
Santam Limited	SNT	36116	35133	2.80	2.30	26.03
The Spar Group Ltd	SPP	13667	13642	0.18	8.58	15.92
Sirius Real Estate Ltd	SRE	2339	2310	1.26	5.84	5.60
Tiger Brands Ltd	TBS	24202	24088	0.47	6.76	20.23
Transaction Capital Ltd	TCP	247	240	2.92	-14.83	-69.05
The Foschini Group Limited	TFG	15790	14748	7.07	13.61	42.30
Thungela Resources Ltd	TGA	10347	10388	-0.39	-14.37	-32.72
Telkom SA SOC Ltd	TKG	2725	2676	1.83	8.01	-8.37
Truworths Int Ltd	TRU	10610	9886	7.32	9.62	42.70
Woolworths Holdings Ltd	WHL	6667	6654	0.20	3.38	-7.66
Zeda Limited	ZZD	1445	1371	5.40	18.93	13.33

LOCAL EQUITIES | JSE SMALL CAP COMPANIES (Cents Per Share)

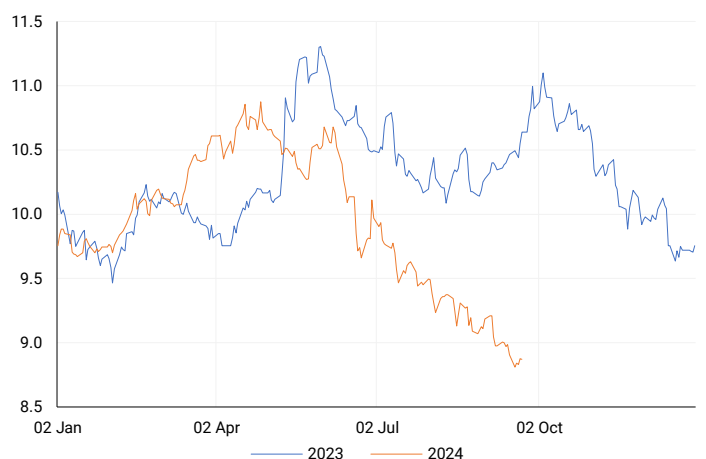
COMPANY	CODE	CLOSE	PREVIOUS	1D%	1M%	YTD%
ArcelorMittal SA Limited	ACL	118	119	-0.84	-2.48	-28.05
ADVTECH Ltd	ADH	2971	3022	-1.69	-4.93	21.07
Altron Limited A	AEL	1700	1699	0.06	-3.02	65.85
AECI Limited	AFE	10131	10155	-0.24	-4.89	-7.64
Alexander Forbes Grp Hldgs	AFH	739	673	9.81	10.13	11.97
Afrimat Limited	AFT	6610	6799	-2.78	3.28	4.92
African Rainbow Cap Inv	AIL	725	730	-0.68	17.69	48.26
Adcock Ingram Hldgs Ltd	AIP	6750	6500	3.85	15.27	12.31
Astral Foods Ltd	ARL	18138	17954	1.02	4.86	23.75
Attacq Limited	ATT	1326	1332	-0.45	18.60	43.82
Brait PLC	BAT	126	123	2.44	32.63	-30.77
Blue Label Telecoms Ltd	BLU	469	473	-0.85	6.35	20.88
Burstone Group	BTN	930	932	-0.21	16.25	16.25
Coronation Fund Mngrs Ld	CML	3706	3679	0.73	-4.97	18.93
Curro Holdings Limited	COH	1300	1304	-0.31	4.25	11.59
Cashbuild Ltd	CSB	15800	16600	-4.82	-5.51	-5.35
DRD Gold Ltd	DRD	1754	1680	4.40	-2.93	11.22
Datatec Ltd	DTC	3593	3653	-1.64	-0.19	-11.28
Emira Property Fund Ltd	EMI	1075	1067	0.75	0.94	25.73
Equites Prop Fund Ltd	EQU	1456	1463	-0.48	8.58	4.37
Famous Brands Ltd	FBR	5843	5869	-0.44	2.51	0.86
Fairvest Limited B	FTB	454	462	-1.73	9.40	31.98
Grindrod Ltd	GND	1498	1570	-4.59	-4.89	30.72
Hosken Cons Inv Ltd	HCI	18140	18623	-2.59	0.72	-10.46
Hudaco Industries Ltd	HDC	19000	19085	-0.45	4.74	18.28
Hyprop Inv Ltd	HYP	4500	4454	1.03	27.30	44.65
JSE Ltd	JSE	12082	12000	0.68	10.17	30.70
KAP Industrial Hldgs Ltd	KAP	334	337	-0.89	5.70	27.48
Karooooo Ltd	KRO	72700	71499	1.68	7.13	53.06
PSG Konsult Limited	KST	1787	1753	1.94	7.39	16.42
Libstar Holdings Ltd	LBR	421	410	2.68	1.45	20.29
Lighthouse Properties plc	LTE	795	794	0.13	-3.87	8.16
Industrials REIT Limited	MLI	1.9	2.3	-17.39	68.85	171.43
MAS P.L.C	MSP	1833	1844	-0.60	2.35	5.89
Metair Investments Ltd	MTA	1431	1442	-0.76	8.66	-19.38
Motus Holdings Ltd	MTH	11940	11999	-0.49	6.28	17.64
Murray & Roberts Hldgs	MUR	299	294	1.70	-0.66	100.67
Oceana Group Ltd	OCE	6634	6638	-0.06	-5.95	-6.13
Omnia Holdings Ltd	OMN	6306	6334	-0.44	2.45	-3.53
Pan African Resource plc	PAN	780	769	1.43	10.33	90.71
PPC Limited	PPC	400	395	1.27	0.76	0.25
Raubex Group Ltd	RBX	5600	5725	-2.18	25.65	102.02
RFG Holdings Limited	RFG	1570	1511	3.90	0.96	16.30
Reunert Ltd	RLO	7720	7676	0.57	2.93	28.80
SA Corp Real Estate Ltd	SAC	301	310	-2.90	11.48	29.74
Super Group Ltd	SPG	2399	2466	-2.72	-8.82	-19.36
Stor-Age Prop REIT Ltd	SSS	1520	1513	0.46	9.83	16.39
Southern Sun LTD	SSU	771	745	3.49	26.39	46.86
Sun International Ltd	SUI	4687	4603	1.82	15.07	14.32
Tharisa plc	THA	1830	1775	3.10	-3.68	21.11
Tsogo Sun Gaming Ltd	TSG	1266	1277	-0.86	7.29	3.35
Vukile Property Fund Ltd	VKE	1809	1835	-1.42	7.17	28.12
Wilson Bayly Hlm-Ovc Ltd	WBO	22263	22250	0.06	18.65	71.17

10-YEAR BOND YIELD | SELECTED ITEMS (Basis Point Change)

REGION	YIELD	1D	1M	1Y
United States	3.74%	3	-11	--
United Kingdom	3.90%	1	-6	-34
Germany	2.20%	1	-4	-53
Japan	0.83%	0	-3	10
South African 10Y	8.88%	3	-24	-169

SOUTH AFRICAN 10-YEAR

2023 vs 2024 to date

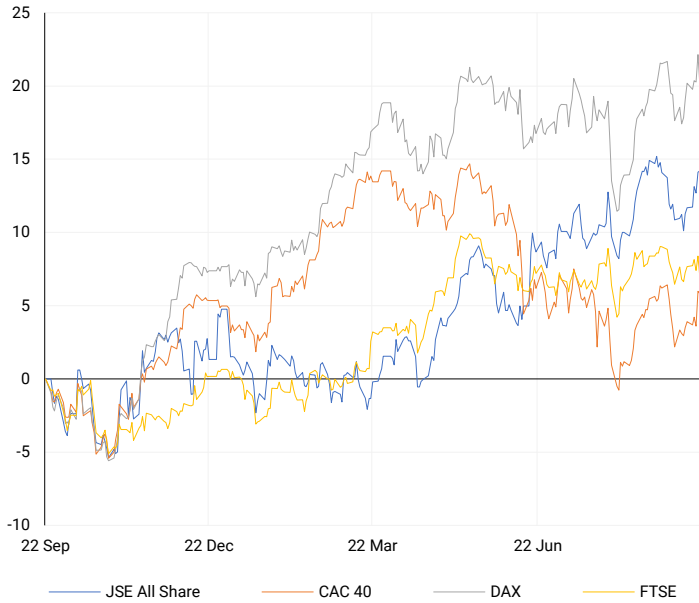


GLOBAL INTEREST RATES | SELECTED ITEMS

REGION	DATE CHANGED	CURRENT RATE
United States	Jul '23	5.25%-5.50%
United Kingdom	Aug '24	5.00%
European	Sep '24	3.65%
SA Repo Rate	Sep '24	8.00%
SA Prime Rate	Sep '24	11.50%

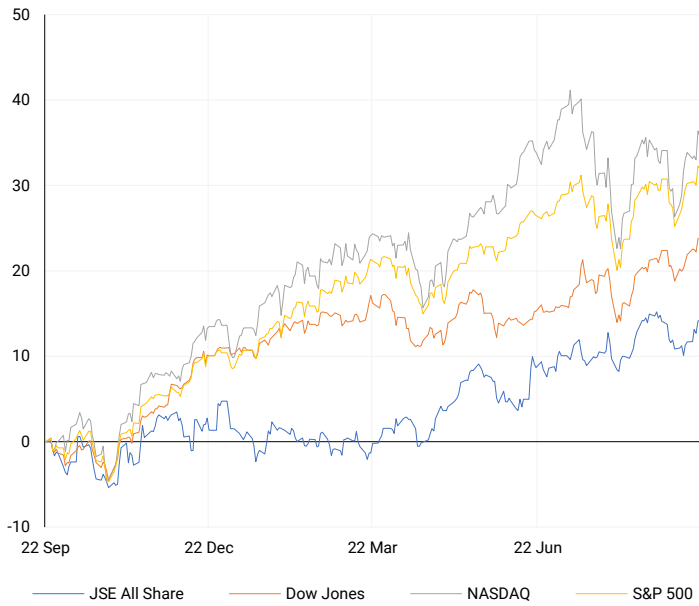
EUROPEAN INDICES

Normalised percentage performances



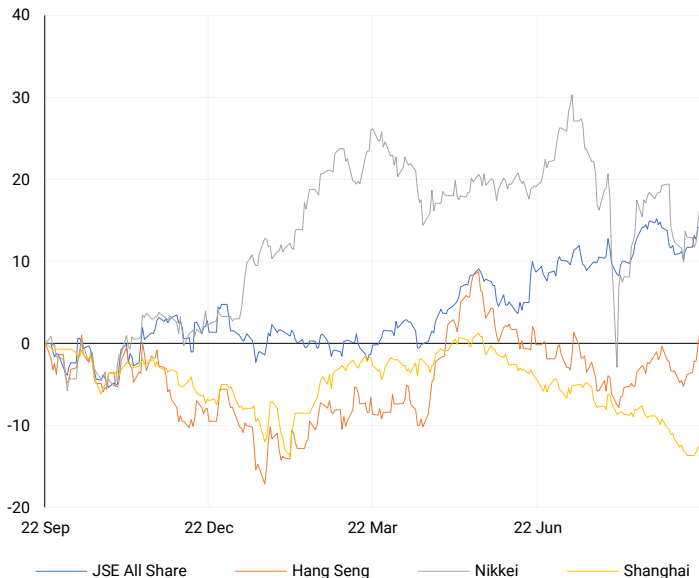
AMERICAN INDICES

Normalised percentage performances



ASIAN INDICES

Normalised percentage performances

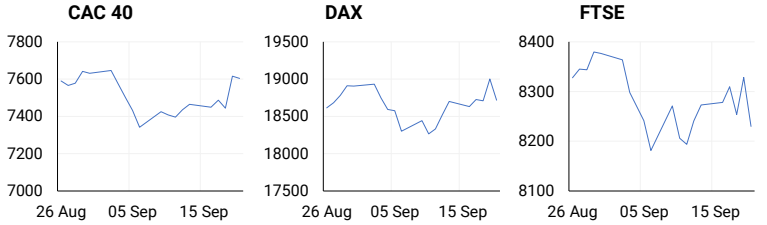


EUROPEAN MARKET SUMMARY

SELECTED ITEMS

European markets closed lower on Friday as investors evaluated the week's central bank rate decisions and their impact on the global economy. In economic data, British retail sales grew by a stronger-than-expected 1% in August, with July's growth revised upward. Eurozone consumer confidence also saw a slight improvement, rising by 0.5 points in September. However, German producer prices fell by 0.8% year-on-year in August, a smaller decline than the anticipated 1%.

EUROPEAN INDICES	CLOSE	PREVIOUS	1D%	5D%	1M%	YTD%
CAC 40	7603.20	7615.41	-0.16	1.85	1.57	0.80
DAX 30	18720.01	19002.38	-1.49	0.11	2.02	11.75
Eurostoxx 50	4872.55	4937.60	-1.32	0.60	0.28	7.76
FTSE	8229.99	8328.72	-1.19	-0.52	-0.52	6.42



AMERICAN MARKET SUMMARY

SELECTED ITEMS

U.S. stocks ended mostly flat on Friday, as investors took a breather following a strong rally fuelled by a larger-than-expected rate cut by the Federal Reserve. Nike's gains pushed the Dow to a record, while major indexes managed weekly gains of at least 1%. Comments from Fed Governor Christopher Waller raised expectations of another 50-basis point rate cut in November, but Governor Michelle Bowman expressed a preference for a smaller cut. Key reports on manufacturing, consumer confidence, and inflation are expected this week.

AMERICAN INDICES	CLOSE	PREVIOUS	1D%	5D%	1M%	YTD%
Dow Jones	42063.36	42025.19	0.09	1.62	3.01	11.60
Nasdaq	17948.32	18013.98	-0.36	1.49	0.74	19.56
S&P 500	5702.55	5713.64	-0.19	1.36	1.88	19.55
US VIX	16.15	16.33	-1.10	-2.48	1.70	29.72

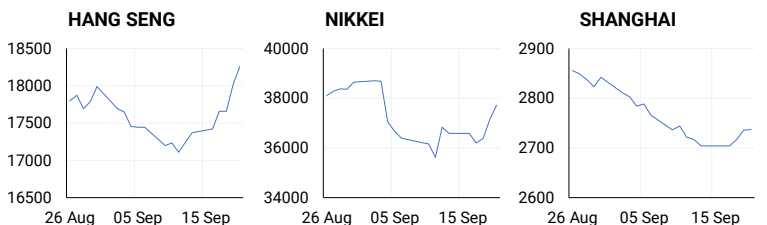


ASIAN MARKET SUMMARY

SELECTED ITEMS

Asia-Pacific markets were mostly higher this morning as investors weighed monetary policy decisions from Japan and China. Data from China last Friday revealed a continued rise in youth unemployment, hitting its highest level this year, signalling a cooling labour market amidst a weakening economy. Despite calls for lower rates, the People's Bank of China unexpectedly left its key rate unchanged. Similarly, the Bank of Japan held its benchmark rate steady at around 0.25%.

ASIAN INDICES	CLOSE	PREVIOUS	1D%	5D%	1M%	YTD%
Hang Seng	18258.57	18013.16	1.36	5.12	4.27	7.10
Nikkei 225	37723.91	37155.33	1.53	3.12	-0.89	12.73
Shanghai	2736.81	2736.02	0.03	1.21	-4.53	-8.00



COMMODITIES MARKET SUMMARY

SELECTED ITEMS

Gold surged above \$2,600 on Friday for the first time, continuing its rally driven by expectations of further U.S. interest rate cuts and escalating tensions in the Middle East. Meanwhile, oil prices saw a slight increase in early trading today, supported by concerns that the Middle East conflict could disrupt supply and optimism that last week's U.S. interest rate cut will boost demand.

COMMODITY	LAST	CLOSE	% CHG	1D%	5D%	YTD%
Brent Crude	75.10	74.72	0.51	-0.16	3.63	-3.06
Gold	2629.91	2622.15	0.30	1.37	1.70	27.10
Palladium	1062.06	1070.26	-0.77	-1.26	0.00	-2.46
Platinum	973.00	979.00	-0.61	-0.94	-1.96	-0.84
Silver	31.12	31.18	-0.19	1.27	1.53	31.07

BRENT CRUDE

One-year



PLATINUM

One-year



GOLD

One-year



CURRENCY PAIR	LAST	CLOSE	% CHG	1D%	5D%	YTD%
USDZAR	17.39	17.43	-0.24	-0.32	-1.88	-4.89
GBPZAR	23.15	23.19	-0.14	-0.14	-0.44	-0.46
EURZAR	19.42	19.49	-0.36	-0.19	-0.95	-3.49
AUDZAR	11.88	11.86	0.19	-0.52	-0.39	-4.79
EURUSD	1.12	1.12	0.02	0.01	0.79	1.14
USDJPY	144.23	143.91	0.22	0.90	2.18	2.04
GBPUSD	1.33	1.33	-0.04	0.30	1.52	4.64
USDCHF	0.85	0.85	0.07	0.28	0.13	1.03

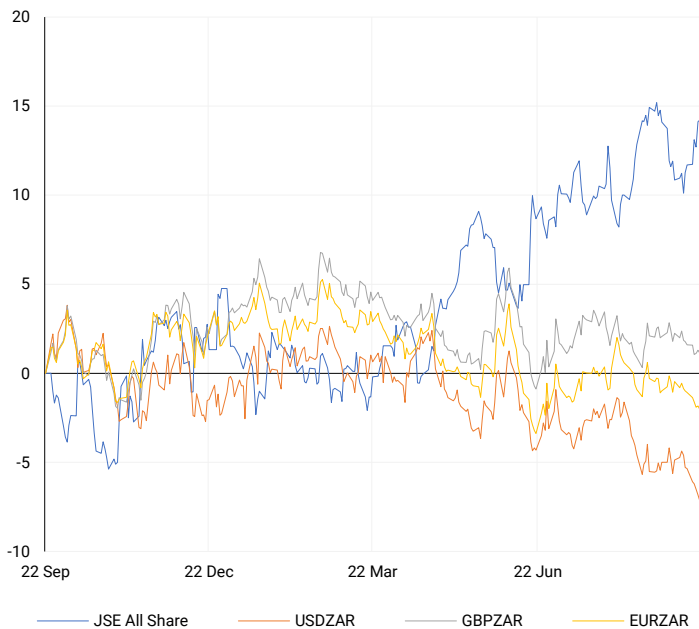
CURRENCY MARKET SUMMARY

SELECTED ITEMS

The South African rand weakened on Friday, retreating after strong gains earlier in the week, driven by interest rate cuts from both the U.S. Federal Reserve and the South African Reserve Bank, along with local inflation data. In currency markets this morning, the dollar rose. The euro also gained nearly 3% against the yen, while remaining steady against the dollar at \$1.1160. Bitcoin surged to one-month highs this morning, continuing its rally after the Fed's large rate cut, while the yen and other major currencies remained stagnant due to a Japanese market holiday.

CURRENCY PAIRS vs JSE ALL SHARE

Normalised percentage performances



USDZAR

One-year



EURUSD

One-year



SOURCES | JSE, IRESS, MONEYWEB, CNBC, BBC, CNN

Disclaimer: This note is prepared for Sanlam Private Wealth (Pty) Ltd, by K2013143132 (Pty) Ltd trading as ThompsonGreen. ThompsonGreen is an independent company contracted to Sanlam Private Wealth (Pty) Ltd. The views expressed in this note are those of ThompsonGreen and/or its analysts and not necessarily the views of Sanlam Private Wealth (Pty) Ltd, Sanlam or any officer or agent thereof. K2013143132 (Pty) Ltd trading as ThompsonGreen is a research house and not a registered broker, financial adviser or financial service provider. Our editors and customer services teams also do not give personal investment advice. The information in this document is general advice only and may not be appropriate to your particular investment objectives, financial situation or particular needs. Before investing, or if you are in any doubt about your personal situation, you should seek professional advice from a stockbroker or independent financial adviser authorised by the Financial Sector Conduct Authority.