

GLOBAL OVERVIEW | SELECTED INDICES

SOUTH AFRICAN INDICES						
	CLOSE	PREVIOUS	1D%	5D%	1M%	YTD%
All Share	85960.32	84777.53	1.40	3.92	1.91	11.79
Top 40	77893.77	76753.46	1.49	4.07	1.20	10.50
Financial 15	21523.73	21456.53	0.31	2.88	4.32	20.43
Industrial 25	116444.17	114041.87	2.11	4.35	1.56	12.27
Resource 10	58217.62	57001.92	2.13	5.79	-1.22	1.19
Mid Cap	91845.03	91415.86	0.47	3.99	3.59	14.21
Small Cap	88580.41	88041.48	0.61	1.78	4.65	22.19
Banks	13473.33	13438.57	0.26	2.75	3.19	23.06
Retailers	7856.85	7913.91	-0.72	5.38	6.75	26.04
Property (J253) - TR	2436.39	2438.20	-0.07	1.03	8.30	30.73

AMERICAN INDICES						
	CLOSE	PREVIOUS	1D%	5D%	1M%	YTD%
Dow Jones	41914.75	42208.22	-0.70	0.99	1.80	11.21
Nasdaq	18082.21	18074.52	0.04	2.90	1.14	20.46
S&P 500	5722.26	5732.93	-0.19	1.85	1.56	19.97
US VIX	15.41	15.39	0.13	-15.47	-2.84	23.78

EUROPEAN INDICES						
	CLOSE	PREVIOUS	1D%	5D%	1M%	YTD%
CAC 40	7565.62	7604.01	-0.50	1.63	-0.15	0.30
DAX 30	18918.50	18996.63	-0.41	1.11	1.53	12.94
Eurostoxx 50	4917.10	4936.00	-0.38	1.65	0.19	8.75
FTSE	8268.70	8282.76	-0.17	0.18	-0.71	6.92

ASIAN INDICES						
	CLOSE	PREVIOUS	1D%	5D%	1M%	YTD%
Hang Seng	19129.10	19000.56	0.68	8.32	8.61	12.21
Nikkei 225	37870.26	37940.59	-0.19	4.10	-1.29	13.17
Shanghai	2896.31	2863.13	1.16	6.59	1.47	-2.64

EARLY MORNING MARKETS						
	LAST	CLOSE	% CHG	1D%	5D%	YTD%
TENCENT	419.60	405.40	3.50	0.80	4.27	39.70
BHP AUS	4268.00	4270.00	-0.05	3.84	8.96	-10.67

NOTE : 5D% and 1M% are rolling percentage moves

INTERNATIONAL ECONOMIC CALENDAR | SELECTED EVENTS

TIME	AREA	TODAY'S EVENTS & RELEASES	PERIOD	EXP.	PREV.
11:30	ZA	PPI m/m	Aug	-0.20%	-0.20%
14:30	US	GDP Growth Rate q/q Final	Q2	3.00%	3.00%
14:30	US	Initial Jobless Claims	Sep	222K	219K
15:20	US	Fed Chair Powell Speech	---	---	---
---	---	---	---	---	---

TIME	AREA	PREVIOUS SESSION'S RELEASES	PERIOD	EXP.	ACT.
9:00	ZA	Leading Business Cycle Indicator m/m	Jul	-0.20%	0.70%
16:00	US	New Home Sales	Aug	0.70M	0.72M
16:30	US	Crude Oil Inventories	Sep	-1.3M	-4.5M
---	---	---	---	---	---
---	---	---	---	---	---

JSE ALL SHARE | BEST AND WORST ONE-DAY PERFORMERS

BEST ONE-DAY % PERFORMERS						
	CODE	CLOSE	1D%	5D%	YTD%	
Kumba Iron Ore Ltd	KIO	36774	9.02	7.73	-40.18	
Transaction Capital Ltd	TCP	259	7.92	2.78	-67.54	
Anglo American plc	AGL	52667	7.78	7.32	11.23	
South32 Limited	S32	4010	6.93	8.23	-4.95	
Brait PLC	BAT	142	6.77	20.34	-21.98	
Naspers Ltd -N-	NPN	391377	6.32	11.03	25.12	

WORST ONE-DAY % PERFORMERS						
	CODE	CLOSE	1D%	5D%	YTD%	
Alexander Forbes Grp Hldgs	AFH	666	-6.98	0.15	0.91	
Woolworths Holdings Ltd	WHL	6537	-3.51	0.57	-9.46	
Metair Investments Ltd	MTA	1427	-3.19	-5.31	-19.61	
Bidvest Ltd	BVT	28646	-2.86	1.39	13.54	
British American Tob plc	BTI	63814	-2.58	-4.15	17.84	

DIVIDEND DATA

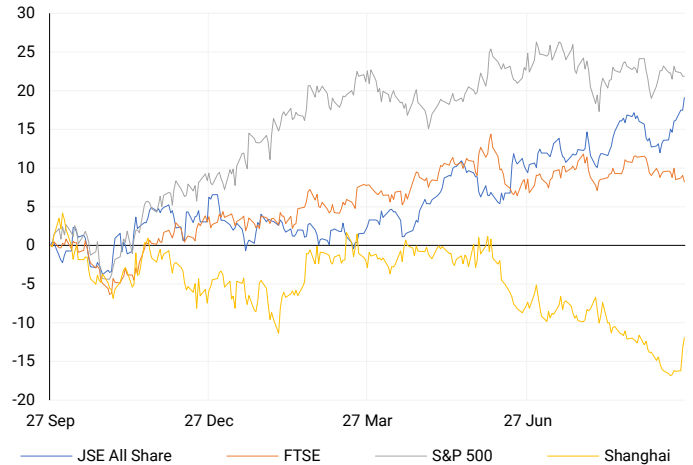
COMPANY	CODE	EXPECTED DIVIDEND	COMPANY	CODE	EXPECTED DIVIDEND
African Rainbow Minerals	ARI	900 ZARc	Motus Holdings	MTH	285 ZARc
Exxaro Resources	EXX	796 ZARc	Truworths International	TRU	197 ZARc
Metrofile Holdings	MFL	7 ZARc	Schroder European Real Estate	SCD	1.48 EURc
Attacq	ATT	39 ZARc	---	---	---
Super Group	SPG	60 ZARc	---	---	---

SOURCES | JSE, IRESS, MONEYWEB, CNBC, BBC, CNN

PLEASE SEE THE BOTTOM OF THE LAST PAGE FOR THE FULL DISCLAIMER

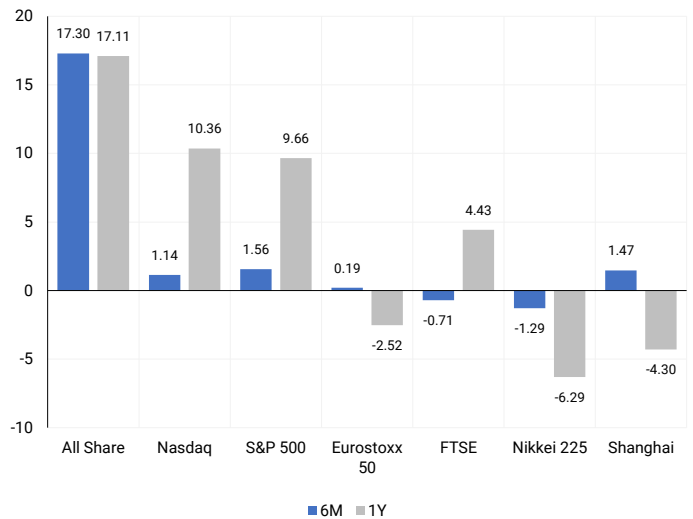
INTERNATIONAL INDICES

Normalised percentage performances - In rand terms



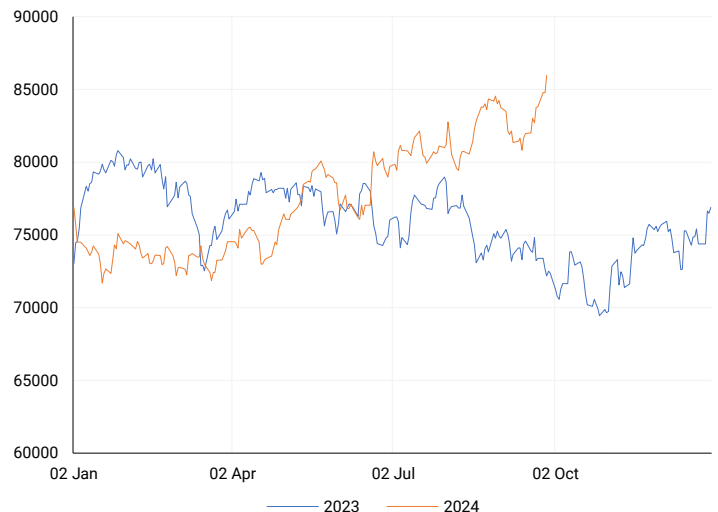
INTERNATIONAL INDICES

6-month & 1-year percentage performances



JSE ALL SHARE INDEX

2023 v 2024 to date



Last date to trade Tue, 01 October

## LOCAL EQUITIES | JSE LARGE CAP COMPANIES (Cents Per Share)

COMPANY	CLOSE	PREVIOUS	1D%	5D%	1M%	YTD%
Absa Group Limited	17567	17560	0.04	2.85	2.83	7.31
Anglo American plc	52667	48866	7.78	7.32	-0.39	11.23
Anglo American Plat Ltd	62784	62178	0.97	10.63	-9.73	-34.87
Anglogold Ashanti Ltd	49990	50336	-0.69	3.93	-9.27	41.45
Anheuser-Busch InBev SA NV	109270	109315	-0.04	-2.61	-0.35	-8.95
BHP Group Limited	49700	47280	5.12	6.24	1.75	-21.54
BID Corporation Ltd	44205	44813	-1.36	-0.44	2.20	3.61
British American Tob plc	63814	65505	-2.58	-4.15	-1.33	17.84
Compagnie Fin Richemont	245850	233237	5.41	0.06	-14.65	-4.25
Capitec Bank Hldgs Ltd	306500	307823	-0.43	2.34	6.13	51.26
Discovery Ltd	17241	17060	1.06	8.64	12.52	20.00
Firststrand Ltd	8622	8586	0.42	3.16	1.32	17.29
Gold Fields Ltd	27099	27240	-0.52	5.53	3.57	-2.44
Glencore plc	9264	8885	4.27	5.08	-3.85	-17.03
Impala Platinum Hlgs Ltd	10293	10139	1.52	11.42	16.33	12.78
Kumba Iron Ore Ltd	36774	33732	9.02	7.73	2.01	-40.18
Mondi plc	32360	32141	0.68	-2.27	-5.53	-10.85
MTN Group Ltd	9595	9532	0.66	1.69	0.02	-16.93
Naspers Ltd -N-	391377	368106	6.32	11.03	5.78	25.12
Prosus N.V.	69420	66030	5.13	9.50	4.59	23.88
South32 Limited	4010	3750	6.93	8.23	8.67	-4.95
Standard Bank Group Ltd	24986	24841	0.58	3.98	5.16	20.07
Shoprite Holdings Ltd	30492	30682	-0.62	1.09	-0.90	10.86
Sanlam Limited	8866	8811	0.62	2.39	3.49	21.79
Sasol Limited	12293	12305	-0.10	-1.30	-16.87	-33.66
Sibanye Stillwater Ltd	1898	1842	3.04	4.11	-2.16	-23.78
Vodacom Group Ltd	11444	11269	1.55	2.73	0.67	7.96

## SOUTH AFRICAN MARKET SUMMARY

### SELECTED ITEMS

The Johannesburg Stock Exchange's Top-40 index rose 1.5% on Wednesday, hitting a new high earlier in the session. On Thursday, investors will turn their attention to August producer inflation data, which will provide more insights into easing price pressures. This follows the South African Reserve Bank's (SARB) rate cut last week, driven by slowing consumer inflation. Additionally, central bank data showed a 0.7% month-on-month rise in the composite leading business cycle indicator for July, reflecting improvements in vehicle sales, business confidence, and money supply.

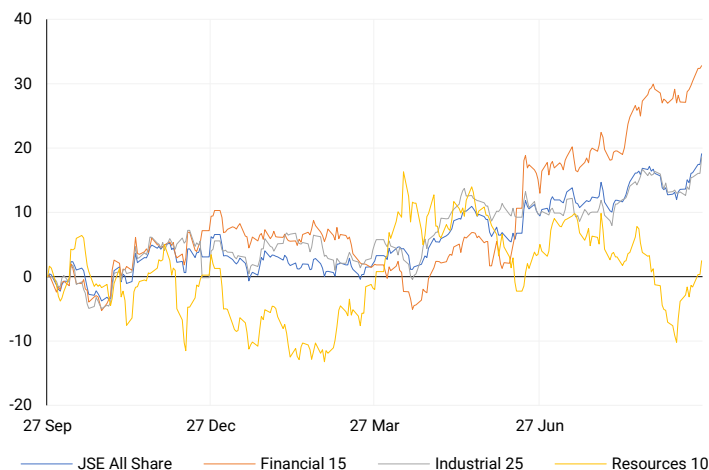
### JSE ALL SHARE

One-year



### LOCAL INDICES

Normalised percentage performances



### LOCAL SENS ANNOUNCEMENTS

#### SELECTED RELEASE

#### GEMFIELDS GROUP LIMITED – Trading Statement

Gemfields expects a net profit of USD 13.7 million for the first half of 2024, down from USD 18.1 million in the same period of 2023. In South African rand (ZAR), this translates to ZAR 255.6 million, compared to ZAR 333.7 million last year. The profit decline is due to lower revenues, higher costs at both operations, a write-down at Sedibelo, and increased financing costs as the company funds a new processing plant. Earnings per share are expected to drop to USD 0.6 (ZAR 11.8), a 21% decline from 2023. Adjusted headline earnings per share, excluding the Sedibelo loss, are forecasted to be USD 1.0, down 48% from last year.

GML | 2.36% OPEN | 260c HIGH | 274c LOW | 250c CLOSE | 260c TIME | 08:00

#### CHOPPIES ENTERPRISES LIMITED – Audited Group Financial Results

For 2024, revenue from continuing operations grew by 31.7% to Pula 8.54 billion, with retail sales increasing by 31.8%. Gross profit rose 28.4% to Pula 1.75 billion, while operating profit increased by 17.2% to Pula 321 million. However, the operating margin declined to 3.79%, down from 4.26%. Profit for the period grew 9.3% to Pula 164 million and 23.4% when excluding the Zimbabwe segment. Basic and headline earnings per share fell to 8.8 Thebe, down 19.3% and 20.7%, respectively. Net cash flow from operations was Pula 663 million, while cash at the period's end stood at Pula 125 million. Including discontinued operations, basic and headline earnings per share were 7.6 Thebe, down over 30%.

CHP | -6.67% OPEN | 75c HIGH | 75c LOW | 68c CLOSE | 70c TIME | 15:30

### EXPECTED COMPANY REPORTING SCHEDULE

COMPANY	CODE	RELEASE	DATE
Old Mutual	OMU	Interim	26 Sep '24
London Finance& Investment Group	LNF	Final	27 Sep '24
Trellidor	TRL	Final	27 Sep '24
Momentum	MTM	Final	27 Sep '24
Capitec	CPI	Interim	28 Sep '24

### BANK AND OTHER SELECTE PREFERENCE SHARES

COMPANY	CODE	CLOSE	CLEAN YIELD	NEXT LDT (Est.)
Investec Limited	INPR	8950	11.24	Thu, 06 Jun '24
Standard Bank	SBPP	8980	11.15	Thu, 05 Sep '24
Absa	ABSP	82000	11.48	Thu, 12 Sep '24
Capitec	CPIP	10400	9.69	Thu, 19 Sep '24
Steinhoff	SHFF	9734	10.47	Thu, 17 Oct '24
Grindrod	GNDP	9000	12.22	Thu, 19 Sep '24
Netcare	NTCP	8200	11.82	Thu, 31 Oct '24
Discovery	DSBP	9330	11.91	Thu, 19 Sep '24
Invicta	IVTP	---	13.41	Thu, 27 Jun '24

**LOCAL EQUITIES | JSE MID CAP COMPANIES** (Cents Per Share)

COMPANY	CODE	CLOSE	PREVIOUS	1D%	1M%	YTD%
Aspen Pharmacare Hldgs Ltd	APN	19450	19158	1.52	-17.38	-4.42
African Rainbow Min Ltd	ARI	18415	18318	0.53	-3.26	-7.93
AVI Ltd	AVI	11036	10874	1.49	8.73	34.47
Barloworld Ltd	BAW	8253	8320	-0.81	-12.86	4.47
Bidvest Ltd	BVT	28646	29488	-2.86	0.27	13.54
Bytes Technology Grp PLC	BYI	11712	11891	-1.51	6.09	-18.22
Capital&Counties Prop plc	CCO	3396	3475	-2.27	-1.37	4.49
Clicks Group Ltd	CLS	39778	38782	2.57	8.19	22.13
Dis-Chem Pharmacies Ltd	DCP	3724	3647	2.11	1.97	21.34
Exxaro Resources Ltd	EXX	16859	16023	5.22	0.40	-17.55
Fortress Real Est INV B	FFB	2071	2064	0.34	13.17	44.22
Growthpoint Prop Ltd	GRT	1426	1417	0.64	4.24	22.09
Harmony GM Co Ltd	HAR	18588	18746	-0.84	-0.38	55.43
Hammerson plc	HMN	730	726	0.55	8.15	7.35
Investec Ltd	INL	12998	12946	0.40	-3.65	3.50
Investec plc	INP	12966	12945	0.16	-3.42	2.95
Italtile Ltd	ITE	1240	1225	1.22	-4.02	10.71
Life Healthc Grp Hldgs Ltd	LHC	1662	1625	2.28	18.21	-9.53
MultiChoice Group Ltd	MCG	10796	10706	0.84	-3.35	33.25
Montauk Renewables Inc	MKR	8600	8618	-0.21	5.39	-50.00
Mr Price Group Ltd	MRP	26444	26160	1.09	11.04	68.64
Momentum Met Hldgs Ltd	MTM	2931	2939	-0.27	5.51	33.90
Ninety One Plc	N91	3895	3870	0.65	-1.19	-9.67
Nedbank Group Ltd	NED	30277	30123	0.51	3.84	40.02
Northam Platinum Hldgs Ltd	NPH	11118	11238	-1.07	-11.17	-20.83
NEPI Rockcastle N.V.	NRP	14422	14578	-1.07	1.92	14.12
Netcare Limited	NTC	1521	1489	2.15	11.18	6.81
Ninety One Limited	NY1	3944	3920	0.61	1.13	-8.22
Old Mutual Limited	OMU	1308	1311	-0.23	2.99	0.15
OUTsurance Group Ltd	OUT	5845	5783	1.07	22.87	38.51
Pick n Pay Stores Ltd	PIK	2577	2536	1.62	7.24	10.74
Pepkor Holdings Ltd	PPH	2374	2374	0.00	10.99	20.94
Quilter Plc	QLT	3062	3026	1.19	-9.41	26.11
Redefine Properties Ltd	RDF	513	506	1.38	12.01	33.25
Remgro Ltd	REM	15298	15550	-1.62	7.44	-5.85
Resilient REIT Limited	RES	5967	5901	1.12	8.45	34.73
Reinet Investments S.C.A	RNI	48618	47218	2.96	0.03	4.28
Sappi Ltd	SAP	4794	4623	3.70	2.07	8.46
Santam Limited	SNT	36387	36058	0.91	1.48	26.97
The Spar Group Ltd	SPP	13825	13562	1.94	9.29	17.26
Sirius Real Estate Ltd	SRE	2228	2282	-2.37	-2.15	0.59
Tiger Brands Ltd	TBS	24541	24197	1.42	5.34	21.92
Transaction Capital Ltd	TCP	259	240	7.92	-12.50	-67.54
The Foschini Group Limited	TFG	15509	15700	-1.22	6.61	39.77
Thungela Resources Ltd	TGA	10693	10466	2.17	-12.12	-30.47
Telkom SA SOC Ltd	TKG	2694	2725	-1.14	0.00	-9.41
Truworths Int Ltd	TRU	10841	10907	-0.61	7.89	45.81
Woolworths Holdings Ltd	WHL	6537	6775	-3.51	0.08	-9.46
Zeda Limited	ZZD	1450	1435	1.05	14.08	13.73

**LOCAL EQUITIES | JSE SMALL CAP COMPANIES** (Cents Per Share)

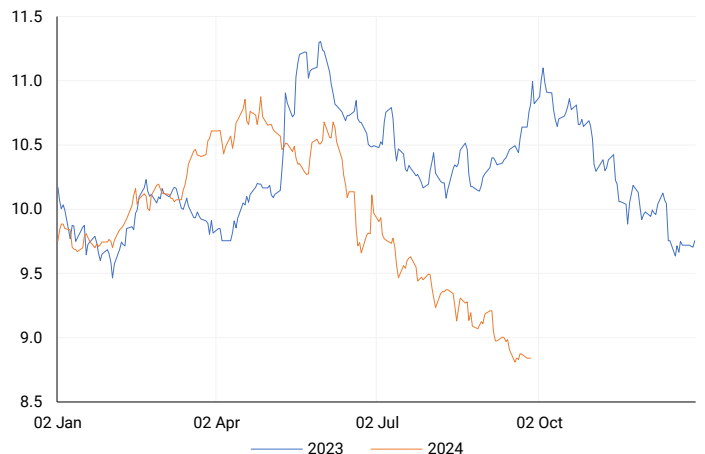
COMPANY	CODE	CLOSE	PREVIOUS	1D%	1M%	YTD%
ArcelorMittal SA Limited	ACL	118	117	0.85	-4.07	-28.05
ADVTECH Ltd	ADH	3042	3060	-0.59	-8.01	23.96
Altron Limited A	AEL	1749	1696	3.12	-1.13	70.63
AECI Limited	AFE	10336	10138	1.95	-4.90	-5.77
Alexander Forbes Grp Hldgs	AFH	666	716	-6.98	-1.77	0.91
Afrimat Limited	AFT	6604	6504	1.54	1.04	4.83
African Rainbow Cap Inv	AIL	732	730	0.27	20.00	49.69
Adcock Ingram Hldgs Ltd	AIP	7139	6740	5.92	5.73	18.79
Astral Foods Ltd	ARL	18923	18418	2.74	9.38	29.11
Attacq Limited	ATT	1340	1328	0.90	18.58	45.34
Brait PLC	BAT	142	133	6.77	32.71	-21.98
Blue Label Telecoms Ltd	BLU	512	488	4.92	-1.16	31.96
Burststone Group	BTN	962	950	1.26	20.55	20.25
Coronation Fund Mngrs Ld	CML	3839	3750	2.37	-3.10	23.20
Curro Holdings Limited	COH	1360	1332	2.10	4.62	16.74
Cashbuild Ltd	CSB	16233	16570	-2.03	-2.80	-2.76
DRD Gold Ltd	DRD	1784	1771	0.73	13.41	13.13
Datatec Ltd	DTC	3664	3646	0.49	2.35	-9.53
Emira Property Fund Ltd	EMI	1095	1061	3.20	2.62	28.07
Equites Prop Fund Ltd	EQU	1448	1460	-0.82	7.18	3.80
Famous Brands Ltd	FBR	6073	5973	1.67	6.64	4.83
Fairvest Limited B	FTB	449	458	-1.97	5.65	30.52
Grindrod Ltd	GND	1468	1450	1.24	-2.91	28.10
Hosken Cons Inv Ltd	HCI	18376	18297	0.43	-0.94	-9.30
Hudaco Industries Ltd	HDC	19002	19000	0.01	2.44	18.30
Hyprop Inv Ltd	HYP	4579	4558	0.46	24.43	47.19
JSE Ltd	JSE	12851	12434	3.35	12.74	39.02
KAP Industrial Hldgs Ltd	KAP	335	336	-0.30	1.52	27.86
Karoo Ltd	KRO	72500	70001	3.57	4.40	52.63
PSG Konsult Limited	KST	1800	1786	0.78	5.39	17.26
Libstar Holdings Ltd	LBR	410	419	-2.15	-5.09	17.14
Lighthouse Properties plc	LTE	790	797	-0.88	-3.89	7.48
Industrials REIT Limited	MLI	1.5	1.3	15.38	33.30	114.29
MAS P.L.C	MSP	1835	1850	-0.81	6.69	6.01
Metair Investments Ltd	MTA	1427	1474	-3.19	3.78	-19.61
Motus Holdings Ltd	MTH	11976	11879	0.82	4.57	17.99
Murray & Roberts Hldgs	MUR	294	300	-2.00	-6.37	97.32
Oceana Group Ltd	OCE	6701	6696	0.07	-4.99	-5.18
Omnia Holdings Ltd	OMN	6389	6365	0.38	-0.65	-2.26
Pan African Resource plc	PAN	770	780	-1.28	7.99	88.26
PPC Limited	PPC	412	398	3.52	1.23	3.26
Raubex Group Ltd	RBX	5600	5553	0.85	16.67	102.02
RFG Holdings Limited	RFG	1590	1600	-0.63	-3.64	17.78
Reunert Ltd	RLO	7885	7667	2.84	3.07	31.55
SA Corp Real Estate Ltd	SAC	305	303	0.66	11.31	31.47
Super Group Ltd	SPG	2421	2406	0.62	-10.00	-18.62
Stor-Age Prop REIT Ltd	SSS	1529	1537	-0.52	9.21	17.08
Southern Sun LTD	SSU	784	790	-0.76	21.36	49.33
Sun International Ltd	SUI	4620	4739	-2.51	12.22	12.68
Tharisa plc	THA	1790	1777	0.73	-7.35	18.46
Tsogo Sun Gaming Ltd	TSG	1285	1291	-0.46	9.74	4.90
Vukile Property Fund Ltd	VKE	1829	1845	-0.87	4.16	29.53
Wilson Bayly Hlm-Ovc Ltd	WBO	23167	22475	3.08	18.81	78.13

**10-YEAR BOND YIELD | SELECTED ITEMS** (Basis Point Change)

REGION	YIELD	1D	1M	1Y
United States	3.78%	6	-1	--
United Kingdom	3.99%	5	8	-33
Germany	2.17%	3	-5	-62
Japan	0.81%	1	-7	--
South African 10Y	8.85%	0	-24	-193

**SOUTH AFRICAN 10-YEAR**

2023 vs 2024 to date


**GLOBAL INTEREST RATES | SELECTED ITEMS**

REGION	DATE CHANGED	CURRENT RATE
United States	Jul '23	5.25%-5.50%
United Kingdom	Aug '24	5.00%
European	Sep '24	3.65%
SA Repo Rate	Sep '24	8.00%
SA Prime Rate	Sep '24	11.50%

SOURCES | JSE, IRESS, MONEYWEB, CNBC, BBC, CNN

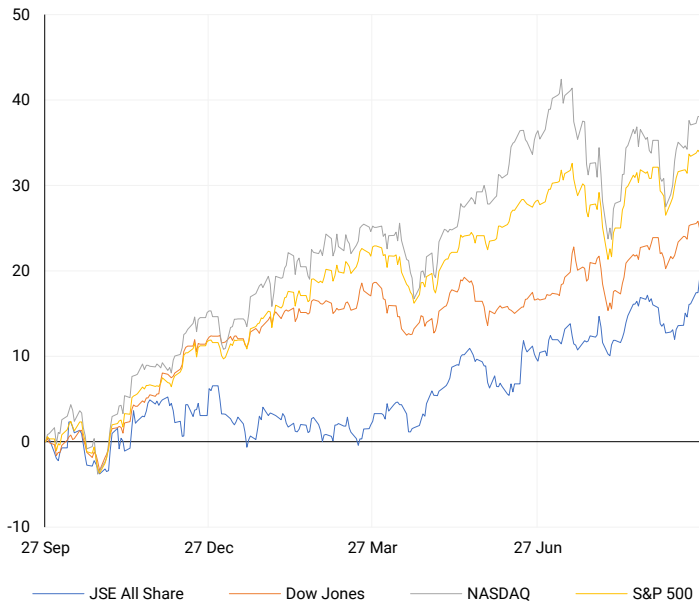
## EUROPEAN INDICES

Normalised percentage performances



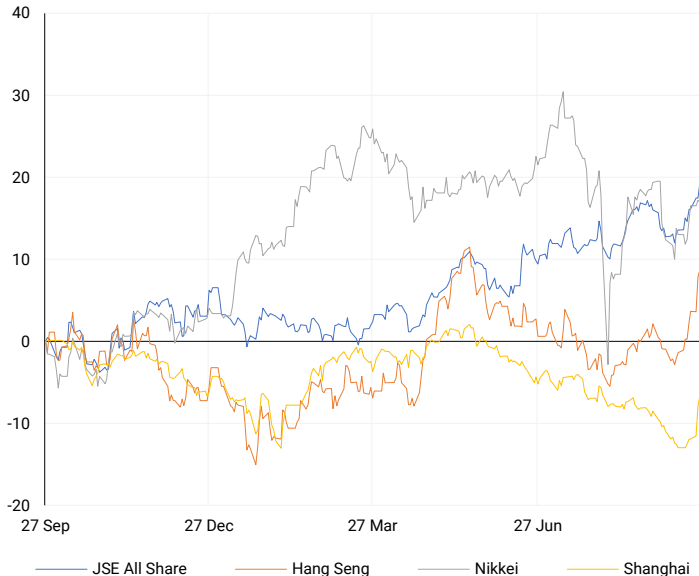
## AMERICAN INDICES

Normalised percentage performances



## ASIAN INDICES

Normalised percentage performances

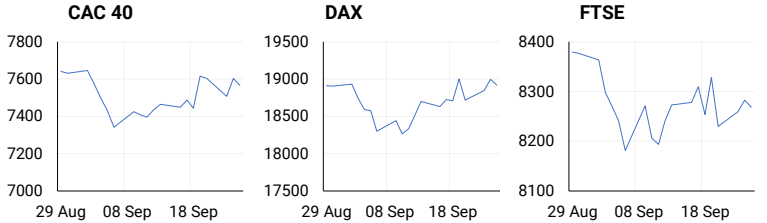


## EUROPEAN MARKET SUMMARY

### SELECTED ITEMS

European stocks closed slightly lower on Wednesday after a volatile trading session. Sweden's Riksbank cut interest rates by 25 basis points to 3.25% and hinted at the possibility of further cuts this year, including a potential 50 basis point reduction. Meanwhile, the OECD upgraded its outlook for the U.K. economy, now forecasting 1.1% growth this year and 1.2% in 2025, a significant improvement from earlier predictions. In May, the OECD had warned that the U.K. could be the worst-performing advanced economy next year.

EUROPEAN INDICES	CLOSE	PREVIOUS	1D%	5D%	1M%	YTD%
CAC 40	7565.62	7604.01	-0.50	1.63	-0.15	0.30
DAX 30	18918.50	18996.63	-0.41	1.11	1.53	12.94
Eurostoxx 50	4917.10	4936.00	-0.38	1.65	0.19	8.75
FTSE	8268.70	8282.76	-0.17	0.18	-0.71	6.92



## AMERICAN MARKET SUMMARY

### SELECTED ITEMS

The Dow Jones Industrial Average and S&P 500 closed lower on Wednesday, retreating from recent record highs. Despite being on track for monthly gains after the Federal Reserve's September 18 rate cut, a weak consumer sentiment report raised concerns about the labour market. In August, sales of new single-family homes declined, but falling mortgage rates and home prices may boost demand soon. Investors are now focused on upcoming data for weekly jobless claims and the August U.S. Personal Consumption Expenditure (PCE) index. Remarks from Fed Governor Adriana Kugler and Fed Chair Jerome Powell's speech on Thursday are also highly anticipated.

AMERICAN INDICES	CLOSE	PREVIOUS	1D%	5D%	1M%	YTD%
Dow Jones	41914.75	42208.22	-0.70	0.99	1.80	11.21
Nasdaq	18082.21	18074.52	0.04	2.90	1.14	20.46
S&P 500	5722.26	5732.93	-0.19	1.85	1.56	19.97
US VIX	15.41	15.39	0.13	-15.47	-2.84	23.78

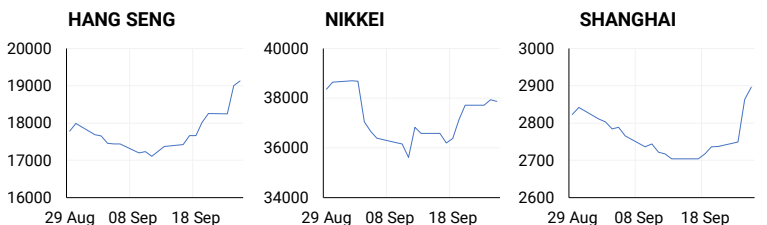


## ASIAN MARKET SUMMARY

### SELECTED ITEMS

Asia-Pacific markets rose this morning, led by Japan's Nikkei 225 and gains in Chinese markets. Japan's Nikkei climbed after the Bank of Japan released minutes from its July meeting. Meanwhile, China's CSI 300 extended its five-day winning streak, reaching its highest level in nearly two months, following Beijing's economic stimulus measures earlier in the week. Adding to positive sentiment, Bloomberg reported that China may inject up to 1 trillion yuan (\$142.39 billion) into its largest state banks to boost their ability to support the struggling economy.

ASIAN INDICES	CLOSE	PREVIOUS	1D%	5D%	1M%	YTD%
Hang Seng	19129.10	19000.56	0.68	8.32	8.61	12.21
Nikkei 225	37870.26	37940.59	-0.19	4.10	-1.29	13.17
Shanghai	2896.31	2863.13	1.16	6.59	1.47	-2.64



## COMMODITIES MARKET SUMMARY

### SELECTED ITEMS

Gold reached a record high on Wednesday, supported by a weaker U.S. dollar and expectations of further interest rate cuts, as investors awaited more clarity on the Federal Reserve's rate plans. Meanwhile, oil prices were steady this morning after a previous drop, with rising U.S. fuel demand and declining stockpiles balancing out concerns about weaker demand, especially in China.

COMMODITY	LAST	CLOSE	% CHG	1D%	5D%	YTD%
Brent Crude	72.93	73.63	-0.95	-2.05	0.95	-4.48
Gold	2661.57	2657.20	0.16	0.00	3.83	28.80
Palladium	1052.00	1044.88	0.68	-1.80	-1.27	-4.77
Platinum	1000.71	988.60	1.22	0.16	1.68	0.14
Silver	31.92	31.81	0.35	-0.91	5.75	33.72

## BRENT CRUDE

One-year



## PLATINUM

One-year



## GOLD

One-year



CURRENCY PAIR	LAST	CLOSE	% CHG	1D%	5D%	YTD%
USDZAR	17.21	17.28	-0.39	0.17	-1.54	-5.72
GBPZAR	22.96	23.02	-0.22	-0.58	-0.71	-1.20
EURZAR	19.18	19.22	-0.21	-0.40	-1.46	-4.79
AUDZAR	11.79	11.79	0.03	-0.94	-0.70	-5.38
EURUSD	1.11	1.11	0.11	-0.42	0.13	0.86
USDJPY	144.70	144.75	-0.04	1.06	1.73	2.63
GBPUSD	1.33	1.33	0.17	-0.67	0.83	4.64
USDCHF	0.85	0.85	-0.08	0.84	0.50	1.05

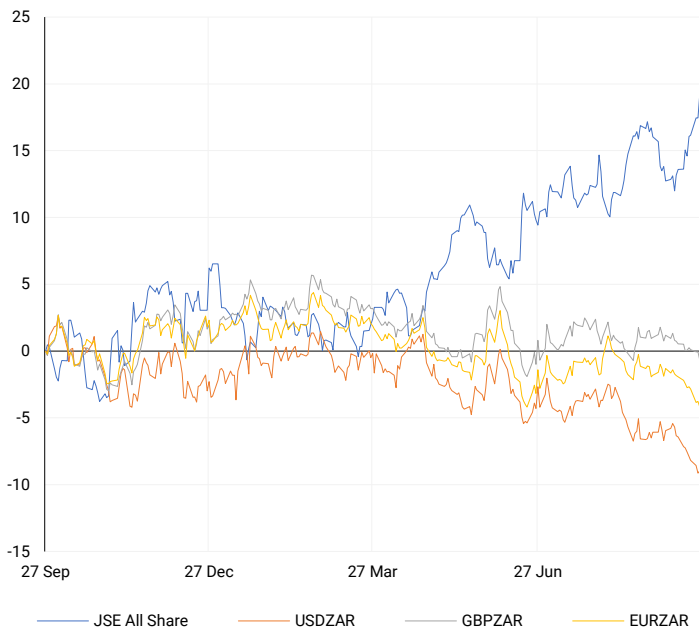
## CURRENCY MARKET SUMMARY

### SELECTED ITEMS

South Africa's rand continued its upward momentum on Wednesday, reaching a new 20-month high against the dollar. The dollar remained strong this morning after its biggest rally since early June, as traders awaited speeches from key Federal Reserve policymakers later in the day for insights into the timing and pace of upcoming interest rate cuts.

## CURRENCY PAIRS vs JSE ALL SHARE

Normalised percentage performances



## USDZAR

One-year



## EURUSD

One-year



SOURCES | JSE, IRESS, MONEYWEB, CNBC, BBC, CNN

**Disclaimer:** This note is prepared for Sanlam Private Wealth (Pty) Ltd, by K2013143132 (Pty) Ltd trading as ThompsonGreen. ThompsonGreen is an independent company contracted to Sanlam Private Wealth (Pty) Ltd. The views expressed in this note are those of ThompsonGreen and/or its analysts and not necessarily the views of Sanlam Private Wealth (Pty) Ltd, Sanlam or any officer or agent thereof. K2013143132 (Pty) Ltd trading as ThompsonGreen is a research house and not a registered broker, financial adviser or financial service provider. Our editors and customer services teams also do not give personal investment advice. The information in this document is general advice only and may not be appropriate to your particular investment objectives, financial situation or particular needs. Before investing, or if you are in any doubt about your personal situation, you should seek professional advice from a stockbroker or independent financial adviser authorised by the Financial Sector Conduct Authority.