

GLOBAL OVERVIEW | SELECTED INDICES

SOUTH AFRICAN INDICES						
	CLOSE	PREVIOUS	1D%	5D%	1M%	YTD%
All Share	85384.82	86759.04	-1.58	-1.79	-1.34	11.04
Top 40	77327.58	78646.69	-1.68	-1.97	-1.50	9.69
Financial 15	20890.39	20995.09	-0.50	-1.81	-1.62	16.88
Industrial 25	116122.31	117727.00	-1.36	-0.09	-3.07	11.96
Resource 10	59180.71	61537.94	-3.83	-5.04	2.31	2.86
Mid Cap	91514.77	93251.56	-1.86	-1.46	-0.21	13.80
Small Cap	88014.48	88633.01	-0.70	-0.82	-0.74	21.41
Banks	12970.16	13001.11	-0.24	-2.18	-1.70	18.47
Retailers	7795.87	7884.65	-1.13	1.86	-2.51	25.06
Property (J253) - TR	2354.84	2384.19	-1.23	-2.82	-2.84	26.35

AMERICAN INDICES						
	CLOSE	PREVIOUS	1D%	5D%	1M%	YTD%
Dow Jones	41763.46	42141.54	-0.90	-1.44	-1.34	10.81
Nasdaq	18095.15	18607.93	-2.76	-1.74	-0.52	20.54
S&P 500	5705.45	5813.67	-1.86	-1.80	-0.99	19.62
US VIX	23.16	20.35	13.81	21.38	38.43	86.02

EUROPEAN INDICES						
	CLOSE	PREVIOUS	1D%	5D%	1M%	YTD%
CAC 40	7350.37	7428.36	-1.05	-2.04	-3.73	-2.56
DAX 30	19077.54	19257.34	-0.93	-1.88	-1.28	13.88
Eurostoxx 50	4826.80	4897.80	-1.45	-2.51	-3.64	6.75
FTSE	8110.10	8159.63	-0.61	-1.93	-1.54	4.87

ASIAN INDICES						
	CLOSE	PREVIOUS	1D%	5D%	1M%	YTD%
Hang Seng	20317.33	20380.64	-0.31	-0.84	-3.86	19.18
Nikkei 225	39081.25	39277.39	-0.50	2.46	3.06	16.79
Shanghai	3279.82	3266.24	0.42	-0.01	-1.70	10.25

EARLY MORNING MARKETS						
	LAST	CLOSE	% CHG	1D%	5D%	YTD%
TENCENT	421.60	404.60	4.20	-1.56	-4.12	39.42
BHP AUS	4295.00	4264.00	0.73	-1.09	0.92	-10.79

NOTE : 5D% and 1M% are rolling percentage moves

INTERNATIONAL ECONOMIC CALENDAR | SELECTED EVENTS

TIME	AREA	TODAY'S EVENTS & RELEASES	PERIOD	EXP.	PREV.
11:00	ZA	ABSA Manufacturing PMI	Oct	50.6	52.8
14:30	US	Non Farm Payrolls	Oct	180K	254K
14:30	US	Unemployment Rate	Oct	4.2%	4.1%
14:30	US	Average Hourly Earnings m/m	Oct	0.3%	0.4%
--	--	--	--	--	--

TIME	AREA	PREVIOUS SESSION'S RELEASES	PERIOD	EXP.	ACT.
11:30	ZA	PPI m/m	Sep	-0.1%	-0.3%
14:00	ZA	Balance of Trade	Sep	R8.0B	R12.8B
14:30	US	Core PCE Price Index m/m	Sep	0.1%	0.3%
14:30	US	Personal Income m/m	Sep	0.2%	0.3%
14:30	US	Employment Cost Index q/q	Q3	0.7%	0.8%

JSE ALL SHARE | BEST AND WORST ONE-DAY PERFORMERS

BEST ONE-DAY % PERFORMERS					
	CODE	CLOSE	1D%	5D%	YTD%
Adcock Ingram Hldgs Ltd	AIP	6945	4.53	3.23	15.56
Alexander Forbes Grp Hldgs	AFH	726	3.27	-0.27	10.00
Santam Limited	SNT	37064	2.24	2.02	29.34
African Rainbow Cap Inv	AIL	742	1.92	0.41	51.74
Oceana Group Ltd	OCE	6795	1.80	3.65	-3.85
Karoo000 Ltd	KRO	71250	1.49	5.74	50.00

WORST ONE-DAY % PERFORMERS					
	CODE	CLOSE	1D%	5D%	YTD%
Metair Investments Ltd	MTA	1072	-8.06	-9.46	-39.61
Northam Platinum Hldgs Ltd	NPH	13022	-7.18	-11.77	-7.27
Sibanye Stillwater Ltd	SSW	2027	-6.80	-1.98	-18.59
Anheuser-Busch InBev SA NV	ANH	105045	-6.38	-8.33	-12.47
Anglo American Plat Ltd	AMS	68900	-6.02	-8.08	-28.53

DIVIDEND DATA

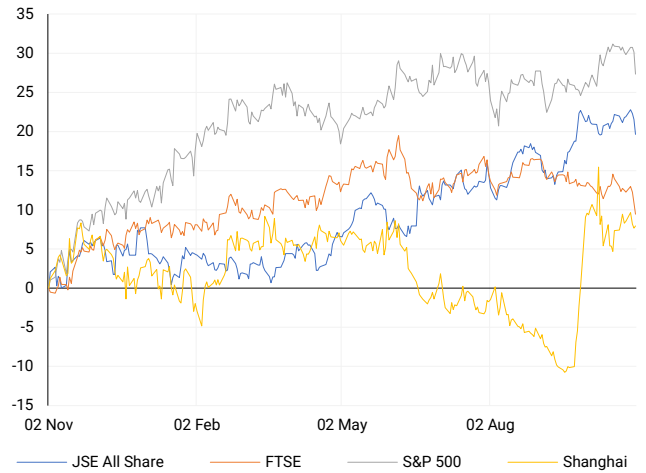
COMPANY	CODE	EXPECTED DIVIDEND	COMPANY	CODE	EXPECTED DIVIDEND
PSG Financial Services	KST	17 ZARc	---	---	---
Bytes Technology	BYI	3.1 GBPP	---	---	---
---	---	---	---	---	---
---	---	---	---	---	---
---	---	---	---	---	---

SOURCES | JSE, IRESS, MONEYWEB, CNBC, BBC, CNN

PLEASE SEE THE BOTTOM OF THE LAST PAGE FOR THE FULL DISCLAIMER

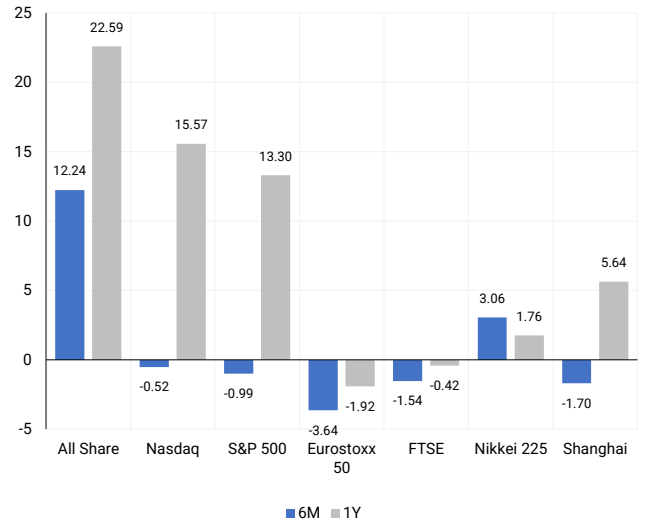
INTERNATIONAL INDICES

Normalised percentage performances - In rand terms



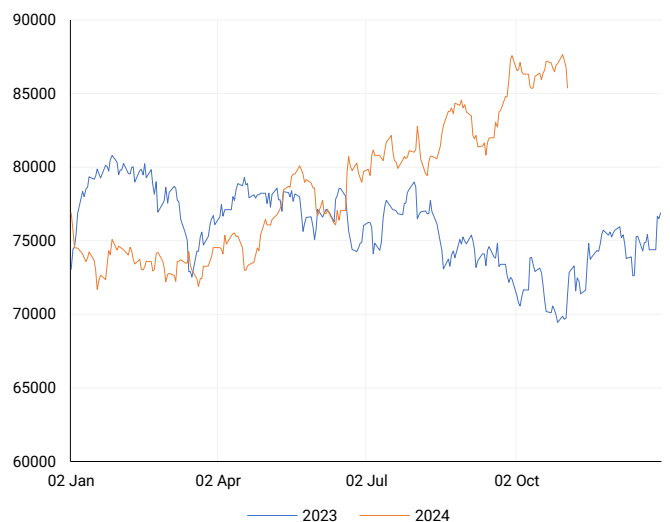
INTERNATIONAL INDICES

6-month & 1-year percentage performances



JSE ALL SHARE INDEX

2023 v 2024 to date



Last date to trade Tue, 05 November

## LOCAL EQUITIES | JSE LARGE CAP COMPANIES (Cents Per Share)

COMPANY	CLOSE	PREVIOUS	1D%	5D%	1M%	YTD%
Absa Group Limited	16863	16963	-0.59	0.06	-3.88	3.01
Anglo American plc	54336	55318	-1.78	-1.38	-2.83	14.76
Anglo American Plat Ltd	68900	73312	-6.02	-8.08	11.06	-28.53
Anglogold Ashanti Ltd	48988	50986	-3.92	-7.90	6.73	38.62
Anheuser-Busch InBev SA NV	105045	112201	-6.38	-8.33	-7.90	-12.47
BHP Group Limited	48792	50275	-2.95	-0.98	-8.82	-22.97
BID Corporation Ltd	41715	42247	-1.26	-3.10	-5.78	-2.23
British American Tob plc	61004	60795	0.34	-0.13	-3.16	12.66
Compagnie Fin Richemont	254466	259644	-1.99	-2.95	-6.96	-0.89
Capitec Bank Hldgs Ltd	317077	316234	0.27	-1.57	4.15	56.48
Discovery Ltd	18005	18150	-0.80	2.01	4.80	25.31
Firststrand Ltd	7710	7737	-0.35	-7.11	-7.18	4.88
Gold Fields Ltd	29017	30590	-5.14	-8.28	7.94	4.46
Glencore plc	9195	9487	-3.08	-0.05	-6.93	-17.64
Impala Platinum Hlgs Ltd	11536	12157	-5.11	-4.13	19.22	26.39
Kumba Iron Ore Ltd	33200	34648	-4.18	-1.37	-17.21	-46.00
Mondi plc	28383	29081	-2.40	-1.30	-13.16	-21.81
MTN Group Ltd	8753	8759	-0.07	-1.65	-4.68	-24.22
Naspers Ltd -N-	414417	421647	-1.71	0.39	-1.21	32.49
Prosus N.V.	73715	75345	-2.16	-1.11	-2.52	31.54
South32 Limited	4130	4243	-2.66	-4.73	-5.58	-2.11
Standard Bank Group Ltd	24156	24283	-0.52	1.33	-0.33	16.08
Shoprite Holdings Ltd	30314	30307	0.02	8.45	2.49	10.21
Sanlam Limited	8773	8943	-1.90	-0.88	-0.31	20.51
Sasol Limited	9818	9948	-1.31	-7.16	-15.40	-47.01
Sibanye Stillwater Ltd	2027	2175	-6.80	-1.98	13.56	-18.59
Vodacom Group Ltd	11000	11038	-0.34	0.91	0.48	3.77

## SOUTH AFRICAN MARKET SUMMARY

### SELECTED ITEMS

On the stock market, South Africa's Top-40 index ended lower on Thursday. Statistics South Africa reported a decline in producer inflation to 1.0% in September, down from 2.8% in August, while the country recorded a trade surplus of 12.84 billion rand (\$727 million). Finance Minister Enoch Godongwana's budget update indicated that South Africa expects wider deficits and increased debt over the next three years. Meanwhile, energy firm Renegen reported a larger loss for the six months ending in August, despite higher revenue from increased LNG prices, and Adcorp, a human resources company, saw a 29% drop in operating profit to R42.3 million due to cost restructuring.

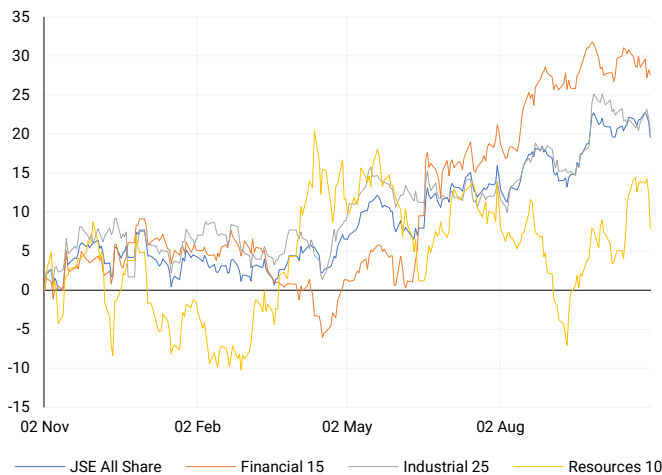
### JSE ALL SHARE

One-year



### LOCAL INDICES

Normalised percentage performances



### LOCAL SENS ANNOUNCEMENTS

#### SELECTED RELEASE

#### OCEANA GROUP LIMITED – Voluntary Trading Statement

Shareholders are informed that for the year ending September 30, 2024, earnings per share (EPS) is expected to be between 896 and 946 cents, reflecting a decrease of 14% to 18% from last year's 1,094.1 cents due to a one-time profit from the previous year's sale of CCS. However, headline earnings per share (HEPS) is anticipated to rise to between 900 and 935 cents, an increase of 15% to 19% compared to 784.4 cents last year.

OCE | 1.80% OPEN | 6701c HIGH | 6940c LOW | 6700c CLOSE | 6795c TIME | 07:05

#### RENERGEN LIMITED – Reviewed Interim Consolidated Financial Statements

Revenue for the six months ending August 31, 2024, rose by R1.8 million to R25.6 million, up from R23.8 million in the previous period. However, the comprehensive loss increased by 55.2%, from R43.5 million to R67.5 million. Headline loss per share grew by 53.10%, from ZAR 0.2987 (AUD 0.0253) to ZAR 0.4573 (AUD 0.0387), while overall loss per share rose by 52.89% over the same period. No dividend was declared, consistent with the previous year.

REN | -3.23% OPEN | 928c HIGH | 939c LOW | 890c CLOSE | 899c TIME | 10:11

#### ADCORP HOLDINGS LIMITED – Unaudited Interim Financial Results

Key highlights include a 4.8% increase in revenue to R6.8 billion and a 3.3% rise in gross profit to R648.1 million. Operating profit, however, declined by 28.9% to R42.3 million, while profit after tax fell by 16.9% to R29.4 million. The net unrestricted cash position improved significantly to R206.4 million, up from R82.1 million. Earnings and headline earnings per share both decreased to 28.2 cents, and an interim dividend of 13.4 cents per share was declared, down from 16.1 cents. The company retained a B-BBEE level 1 rating in South Africa.

ADR | 3.09% OPEN | 461c HIGH | 501c LOW | 461c CLOSE | 500c TIME | 09:00

### EXPECTED COMPANY REPORTING SCHEDULE

COMPANY	CODE	RELEASE	DATE
Clicks	CLS	Final	1 Nov '24
Dis-Chem	DCP	Interim	4 Nov '24
Sappi	SAP	Final	8 Nov '24
TFG	TFG	Interim	8 Nov '24
Cientele	CLI	Final	13 Nov '24

### BANK AND OTHER SELECTE PREFERENCE SHARES

COMPANY	CODE	CLOSE	CLEAN YIELD	NEXT LDT (Est.)
Investec Limited	INPR	9375	11.24	Thu, 28 Nov '24
Standard Bank	SBPP	9240	11.15	Wed, 02 Apr '25
Absa	ABSP	85000	11.48	Wed, 16 Apr '25
Capitec	CPIP	10200	9.69	Tue, 18 Mar '25
Grindrod	GNDP	9400	12.22	Wed, 02 Apr '25
Netcare	NTCP	8699	11.82	Thu, 31 Oct '24
Discovery	DSBP	10000	11.91	Tue, 18 Mar '25

**LOCAL EQUITIES | JSE MID CAP COMPANIES** (Cents Per Share)

COMPANY	CODE	CLOSE	PREVIOUS	1D%	1M%	YTD%
Aspen Pharmacare Hldgs Ltd	APN	17849	18166	-1.75	-8.47	-12.29
African Rainbow Min Ltd	ARI	17759	18324	-3.08	-6.22	-11.21
AVI Ltd	AVI	11003	10879	1.14	0.03	34.07
Barloworld Ltd	BAW	8263	8263	0.00	-4.56	4.59
Bidvest Ltd	BVT	28365	28811	-1.55	-3.12	12.43
Bytes Technology Grp PLC	BYI	10262	10844	-5.37	-13.61	-28.34
Capital&Counties Prop plc	CCO	3133	3316	-5.52	-7.23	-3.60
Clicks Group Ltd	CLS	37634	37988	-0.93	-5.20	15.54
Dis-Chem Pharmacies Ltd	DCP	3616	3603	0.36	-4.72	17.82
Exxaro Resources Ltd	EXX	16565	16877	-1.85	-3.73	-18.99
Fortress Real Est INV B	FFB	1880	1915	-1.83	-8.74	30.92
Growthpoint Prop Ltd	GRT	1305	1314	-0.68	-6.99	11.73
Harmony GM Co Ltd	HAR	18876	19840	-4.86	5.96	57.84
Hammerson plc	HMN	6820	7100	-3.94	-7.15	902.94
Investec Ltd	INL	13750	13670	0.59	4.81	9.48
Investec plc	INP	13708	13697	0.08	4.64	8.84
Italtile Ltd	ITE	1315	1313	0.15	5.12	17.41
Life Healthc Grp Hldgs Ltd	LHC	1595	1595	0.00	-0.31	-13.17
MultiChoice Group Ltd	MCG	11127	11075	0.47	2.08	37.34
Montauk Renewables Inc	MKR	9718	10103	-3.81	2.29	-43.50
Mr Price Group Ltd	MRP	25584	25875	-1.12	-5.32	63.15
Momentum Met Hldgs Ltd	MTM	2879	2853	0.91	-2.31	31.52
Ninety One Plc	N91	3754	3853	-2.57	-7.40	-12.94
Nedbank Group Ltd	NED	29703	29762	-0.20	-0.65	37.37
Northam Platinum Hldgs Ltd	NPH	13022	14030	-7.18	19.42	-7.27
NEPI Rockcastle N.V.	NRP	13837	14046	-1.49	-5.15	9.49
Netcare Limited	NTC	1478	1470	0.54	-4.09	3.79
Ninety One Limited	NY1	3782	3828	-1.20	-7.51	-11.99
Old Mutual Limited	OMU	1217	1224	-0.57	-11.17	-6.81
OUTsurance Group Ltd	OUT	6005	6016	-0.18	3.46	42.30
Pick n Pay Stores Ltd	PIK	2545	2607	-2.38	-1.47	9.37
Pepkor Holdings Ltd	PPH	2285	2311	-1.13	-5.15	16.40
Quilter Plc	QLT	3246	3323	-2.32	5.66	33.69
Redefine Properties Ltd	RDF	489	500	-2.20	-2.00	27.01
Remgro Ltd	REM	15356	15509	-0.99	-2.40	-5.49
Resilient REIT Limited	RES	5611	5554	1.03	-4.48	26.69
Reinet Investments S.C.A	RNI	48929	48721	0.43	2.18	4.95
Sappi Ltd	SAP	4766	4880	-2.34	-1.63	7.83
Santam Limited	SNT	37064	36252	2.24	0.72	29.34
The Spar Group Ltd	SPP	12653	12890	-1.84	-6.65	7.32
Sirius Real Estate Ltd	SRE	2043	2130	-4.08	-7.89	-7.77
Tiger Brands Ltd	TBS	23643	23887	-1.02	1.47	17.46
Transaction Capital Ltd	TCP	290	290	0.00	-1.02	-63.66
The Foschini Group Limited	TFG	15344	15586	-1.55	-1.77	38.28
Thungela Resources Ltd	TGA	12688	12816	-1.00	15.61	-17.50
Telkom SA SOC Ltd	TKG	2700	2700	0.00	2.47	-9.21
Truworths Int Ltd	TRU	11175	11225	-0.45	2.52	50.30
Woolworths Holdings Ltd	WHL	6510	6644	-2.02	-4.42	-9.83
Zeda Limited	ZZD	1440	1445	-0.35	3.60	12.94

**LOCAL EQUITIES | JSE SMALL CAP COMPANIES** (Cents Per Share)

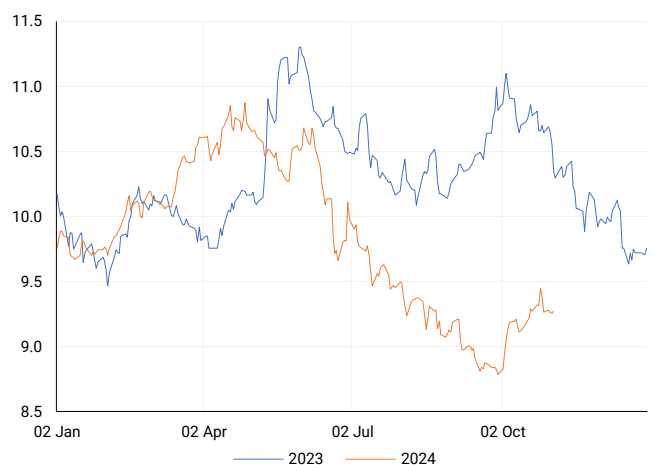
COMPANY	CODE	CLOSE	PREVIOUS	1D%	1M%	YTD%
ArcelorMittal SA Limited	ACL	144	147	-2.04	12.50	-12.20
AdvTECH Ltd	ADH	3126	3195	-2.16	-1.17	27.38
Altron Limited A	AEL	1837	1880	-2.29	6.18	79.22
AECI Limited	AFE	9692	9690	0.02	-6.35	-11.64
Alexander Forbes Grp Hldgs	AFH	726	703	3.27	0.83	10.00
Afrimat Limited	AFT	6642	6590	0.79	-2.72	5.43
African Rainbow Cap Inv	AIL	742	728	1.92	2.06	51.74
Adcock Ingram Hldgs Ltd	AIP	6945	6644	4.53	-1.04	15.56
Astral Foods Ltd	ARL	17173	17395	-1.28	-9.17	17.17
Attacq Limited	ATT	1312	1362	-3.67	1.00	42.30
Brait PLC	BAT	162	162	0.00	10.20	-10.99
Blue Label Telecoms Ltd	BLU	556	564	-1.42	5.30	43.30
Burstone Group	BTN	937	943	-0.64	-2.40	17.13
Coronation Fund Mngrs Ld	CML	4004	3988	0.40	2.43	28.50
Curro Holdings Limited	COH	1276	1295	-1.47	-3.55	9.53
Cashbuild Ltd	CSB	17618	18000	-2.12	9.43	5.54
DRD Gold Ltd	DRD	2136	2155	-0.88	30.24	35.45
Datalec Ltd	DTC	4036	4119	-2.02	6.29	-0.35
Emira Property Fund Ltd	EMI	1147	1150	-0.26	5.23	34.15
Equites Prop Fund Ltd	EQU	1403	1430	-1.89	-2.57	0.57
Famous Brands Ltd	FBR	6250	6278	-0.45	-1.64	7.89
Fairvest Limited B	FTB	468	484	-3.31	4.00	36.05
Grindrod Ltd	GND	1410	1434	-1.67	-6.62	23.04
Hosken Cons Inv Ltd	HCI	18556	18689	-0.71	1.96	-8.41
Hudaco Industries Ltd	HDC	20070	20049	0.10	3.42	24.95
Hyprop Inv Ltd	HYP	4174	4161	0.31	-9.30	34.17
JSE Ltd	JSE	12536	12602	-0.52	-2.27	35.61
KAP Industrial Hldgs Ltd	KAP	328	338	-2.96	-3.53	25.19
Karooooo Ltd	KRO	71250	70201	1.49	-1.01	50.00
PSG Konsult Limited	KST	1869	1869	0.00	2.47	21.76
Libstar Holdings Ltd	LBR	435	420	3.57	4.07	24.29
Lighthouse Properties plc	LTE	781	786	-0.64	-0.51	6.26
Industrials REIT Limited	MLI	2.8	2.8	0.00	64.71	300.00
MAS P.L.C	MSP	1838	1840	-0.11	0.71	6.18
Metair Investments Ltd	MTA	1072	1166	-8.06	-17.85	-39.61
Motus Holdings Ltd	MTH	11799	11782	0.14	-2.88	16.25
Murray & Roberts Hldgs	MUR	222	234	-5.13	-22.11	48.99
Oceana Group Ltd	OCE	6795	6675	1.80	-1.52	-3.85
Omnia Holdings Ltd	OMN	6711	6623	1.33	3.20	2.66
Pan African Resource plc	PAN	807	830	-2.77	11.00	97.31
PPC Limited	PPC	394	397	-0.76	0.77	-1.25
Raubex Group Ltd	RBX	4743	4879	-2.79	-9.73	71.10
RFG Holdings Limited	RFG	1699	1705	-0.35	3.09	25.85
Reunert Ltd	RLO	8025	8080	-0.68	-0.93	33.88
SA Corp Real Estate Ltd	SAC	283	289	-2.08	-7.82	21.98
Super Group Ltd	SPG	2239	2281	-1.84	-7.33	-24.74
Stor-Age Prop REIT Ltd	SSS	1511	1530	-1.24	-0.26	15.70
Southern Sun LTD	SSU	835	829	0.72	7.74	59.05
Sun International Ltd	SUI	4543	4567	-0.53	-0.15	10.80
Tharisa plc	THA	1625	1635	-0.61	-9.72	7.54
Tsogo Sun Gaming Ltd	TSG	1239	1260	-1.67	-0.88	1.14
Vukile Property Fund Ltd	VKE	1860	1846	0.76	1.86	31.73
Wilson Bayly Hlm-Ovc Ltd	WBO	21523	21566	-0.20	-6.96	65.49

**10-YEAR BOND YIELD | SELECTED ITEMS** (Basis Point Change)

REGION	YIELD	1D	1M	1Y
United States	4.28%	-2	50	-
United Kingdom	4.44%	9	44	-7
Germany	2.39%	0	27	-42
Japan	0.95%	0	10	-
South African 10Y	9.32%	22	54	-106

**SOUTH AFRICAN 10-YEAR**

2023 vs 2024 to date

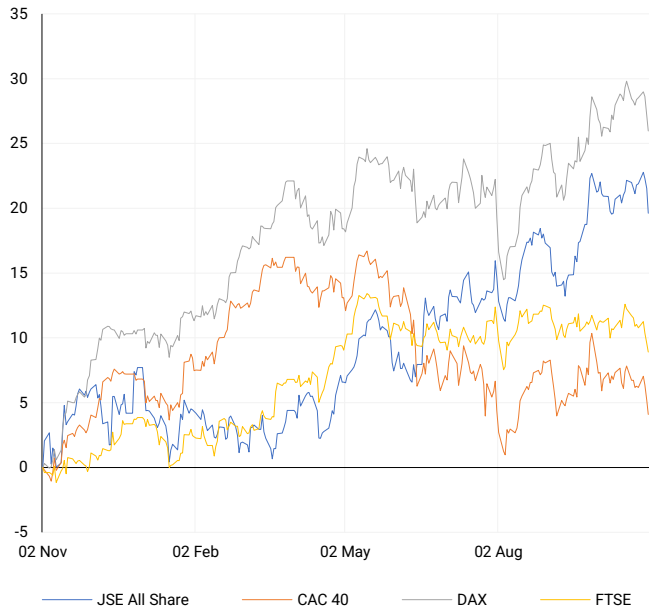


**GLOBAL INTEREST RATES | SELECTED ITEMS**

REGION	DATE CHANGED	CURRENT RATE
United States	Sep '24	4.75%-5.00%
United Kingdom	Aug '24	5.00%
European	Oct '24	3.40%
SA Repo Rate	Sep '24	8.00%
SA Prime Rate	Sep '24	11.50%

## EUROPEAN INDICES

Normalised percentage performances



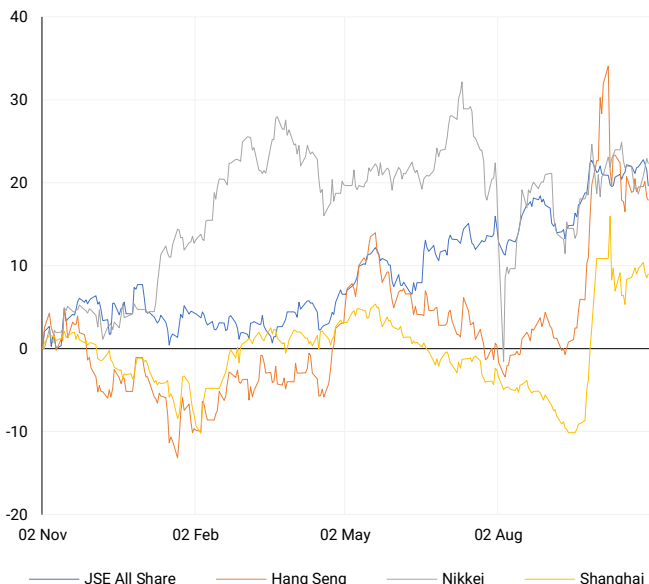
## AMERICAN INDICES

Normalised percentage performances



## ASIAN INDICES

Normalised percentage performances

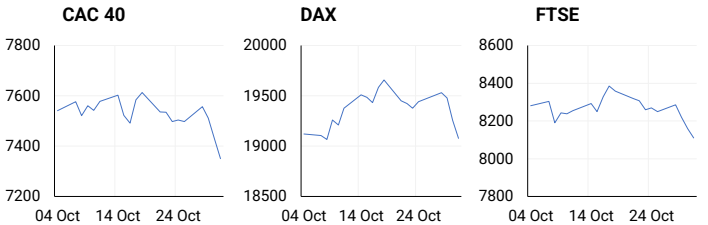


## EUROPEAN MARKET SUMMARY

### SELECTED ITEMS

European markets closed lower on Thursday, capping October with their sharpest losses in a year, as investors assessed mixed earnings, rising inflation, and a major U.K. budget. Eurozone inflation rose to 2% in October, slightly above expectations and up from 1.7% in September, reducing the likelihood of a large 50-basis-point interest rate cut by the European Central Bank in December. Economic data also showed stronger-than-expected eurozone growth of 0.4% in Q3. In the U.K., housebuilders fell as government bond yields surged amid concerns over the inflationary impact of the recent budget's tax hikes and borrowing plans, potentially slowing Bank of England rate cuts.

EUROPEAN INDICES	CLOSE	PREVIOUS	1D%	5D%	1M%	YTD%
CAC 40	7350.37	7428.36	-1.05	-2.04	-3.73	-2.56
DAX 30	19077.54	19257.34	-0.93	-1.88	-1.28	13.88
Eurostoxx 50	4826.80	4897.80	-1.45	-2.51	-3.64	6.75
FTSE	8110.10	8159.63	-0.61	-1.93	-1.54	4.87



## AMERICAN MARKET SUMMARY

### SELECTED ITEMS

All three major U.S. stock indices ended lower on Thursday as Microsoft and Meta Platforms reported rising costs related to artificial intelligence, raising concerns about potential earnings impacts and dampening enthusiasm for the megacap stocks that have driven this year's rally. The Federal Reserve's preferred inflation gauge, the Personal Consumption Expenditures price index, rose 0.2% in September as expected, while the core inflation rate reached 2.7% year-over-year, just above the 2.6% forecast. Consumer spending also rose slightly more than anticipated.

AMERICAN INDICES	CLOSE	PREVIOUS	1D%	5D%	1M%	YTD%
Dow Jones	41763.46	42141.54	-0.90	-1.44	-1.34	10.81
Nasdaq	18095.15	18607.93	-2.76	-1.74	-0.52	20.54
S&P 500	5705.45	5813.67	-1.86	-1.80	-0.99	19.62
US VIX	23.16	20.35	13.81	21.38	38.43	86.02



## ASIAN MARKET SUMMARY

### SELECTED ITEMS

Asia-Pacific markets mostly declined this morning as traders reviewed regional economic data. China's Caixin manufacturing PMI rose to 50.3 in October, surpassing the expected 49.7 and indicating expansion, up from 49.3 in September. Meanwhile, Australia's third-quarter producer price index increased by 3.9% year-on-year, down from 4.8% in the previous quarter, and rose 0.9% quarter-on-quarter, slightly below the prior 1% rise.

ASIAN INDICES	CLOSE	PREVIOUS	1D%	5D%	1M%	YTD%
Hang Seng	20317.33	20380.64	-0.31	-0.84	-3.86	19.18
Nikkei 225	39081.25	39277.39	-0.50	2.46	3.06	16.79
Shanghai	3279.82	3266.24	0.42	-0.01	-1.70	10.25



## COMMODITIES MARKET SUMMARY

### SELECTED ITEMS

Gold prices held steady this morning as investors awaited U.S. payrolls data, which could shed light on the Federal Reserve's future interest rate moves. Meanwhile, oil prices climbed over \$1 per barrel, recovering some weekly losses amid heightened geopolitical tensions in the Middle East, with reports suggesting that Iran may be preparing a retaliatory strike on Israel from Iraq in the coming days.

## BRENT CRUDE

One-year



COMMODITY	LAST	CLOSE	% CHG	1D%	5D%	YTD%
Brent Crude	74.14	73.17	1.33	0.15	-1.89	-5.07
Gold	2751.59	2744.04	0.28	-1.56	0.29	33.01
Palladium	1115.79	1120.10	-0.38	-2.60	-3.52	2.08
Platinum	992.81	993.95	-0.11	-1.94	-3.40	0.68
Silver	32.79	32.66	0.40	-3.29	-3.03	37.30

## PLATINUM

One-year



## GOLD

One-year



## CURRENCY MARKET SUMMARY

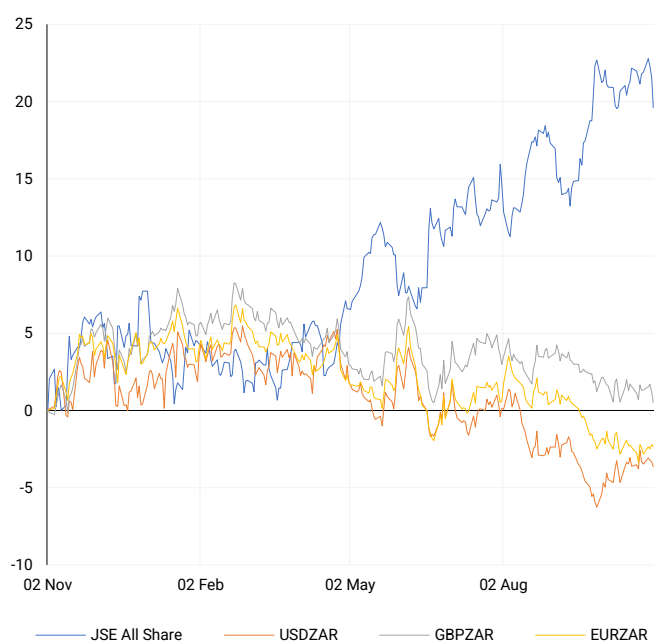
### SELECTED ITEMS

South Africa's rand held steady on Thursday after the release of local producer inflation and trade balance data, following the finance minister's mid-term budget presentation the previous day. The dollar held steady against major currencies this morning as investors awaited the U.S. jobs report, which could confirm economic resilience ahead of the Federal Reserve's upcoming policy meeting and the closely contested U.S. presidential election next week.

CURRENCY PAIR	LAST	CLOSE	% CHG	1D%	5D%	YTD%
USDZAR	17.62	17.60	0.11	-0.31	-0.36	-3.97
GBPZAR	22.73	22.73	-0.01	-0.68	-0.80	-2.44
EURZAR	19.16	19.14	0.12	-0.11	0.07	-5.19
AUDZAR	11.59	11.58	0.05	-0.15	-1.21	-7.01
EURUSD	1.09	1.09	-0.05	0.24	0.51	-1.40
USDJPY	152.47	152.04	0.28	-0.90	0.14	7.80
GBPUSD	1.29	1.29	0.01	-0.49	-0.59	1.31
USDCHF	0.86	0.86	0.02	-0.34	-0.22	2.64

## CURRENCY PAIRS vs JSE ALL SHARE

Normalised percentage performances



## USDZAR

One-year



## EURUSD

One-year



SOURCES | JSE, IRESS, MONEYWEB, CNBC, BBC, CNN

**Disclaimer:** This note is prepared for Sanlam Private Wealth (Pty) Ltd, by K2013143132 (Pty) Ltd trading as ThompsonGreen. ThompsonGreen is an independent company contracted to Sanlam Private Wealth (Pty) Ltd. The views expressed in this note are those of ThompsonGreen and/or its analysts and not necessarily the views of Sanlam Private Wealth (Pty) Ltd, Sanlam or any officer or agent thereof. K2013143132 (Pty) Ltd trading as ThompsonGreen is a research house and not a registered broker, financial adviser or financial service provider. Our editors and customer services teams also do not give personal investment advice. The information in this document is general advice only and may not be appropriate to your particular investment objectives, financial situation or particular needs. Before investing, or if you are in any doubt about your personal situation, you should seek professional advice from a stockbroker or independent financial adviser authorised by the Financial Sector Conduct Authority.