

GLOBAL OVERVIEW | SELECTED INDICES

| SOUTH AFRICAN INDICES | | | | | | |
|-----------------------|-----------|-----------|------|-------|-------|-------|
| | CLOSE | PREVIOUS | 1D% | 5D% | 1M% | YTD% |
| All Share | 86198.57 | 85384.82 | 0.95 | -0.94 | -0.49 | 12.10 |
| Top 40 | 78091.69 | 77327.58 | 0.99 | -1.06 | -0.62 | 10.78 |
| Financial 15 | 21075.03 | 20890.39 | 0.88 | 0.15 | 0.27 | 17.91 |
| Industrial 25 | 117330.97 | 116122.31 | 1.04 | 0.04 | -1.97 | 13.13 |
| Resource 10 | 59737.71 | 59180.71 | 0.94 | -4.46 | 0.72 | 3.83 |
| Mid Cap | 92353.08 | 91514.77 | 0.92 | -0.81 | 0.27 | 14.85 |
| Small Cap | 88323.18 | 88014.48 | 0.35 | -0.50 | 0.18 | 21.84 |
| Banks | 13115.10 | 12970.16 | 1.12 | 0.36 | 0.50 | 19.79 |
| Retailers | 7849.44 | 7795.87 | 0.69 | 2.19 | -1.59 | 25.92 |
| Property (J253) - TR | 2364.26 | 2354.84 | 0.40 | -1.70 | -1.78 | 26.86 |

| AMERICAN INDICES | | | | | | |
|------------------|----------|----------|-------|-------|-------|-------|
| | CLOSE | PREVIOUS | 1D% | 5D% | 1M% | YTD% |
| Dow Jones | 42052.19 | 41763.46 | 0.69 | -0.15 | -0.25 | 11.58 |
| Nasdaq | 18239.92 | 18095.15 | 0.80 | -1.50 | 1.84 | 21.51 |
| S&P 500 | 5728.80 | 5705.45 | 0.41 | -1.37 | 0.35 | 20.10 |
| US VIX | 21.88 | 23.16 | -5.53 | 7.62 | 13.60 | 75.74 |

| EUROPEAN INDICES | | | | | | |
|------------------|----------|----------|------|-------|-------|-------|
| | CLOSE | PREVIOUS | 1D% | 5D% | 1M% | YTD% |
| CAC 40 | 7409.11 | 7350.37 | 0.80 | -1.18 | -2.18 | -1.78 |
| DAX 30 | 19254.97 | 19077.54 | 0.93 | -1.07 | 0.22 | 14.94 |
| Eurostoxx 50 | 4878.05 | 4826.80 | 1.06 | -1.31 | -1.20 | 7.88 |
| FTSE | 8177.15 | 8110.10 | 0.83 | -0.87 | -1.20 | 5.74 |

| ASIAN INDICES | | | | | | |
|---------------|----------|----------|-------|-------|-------|-------|
| | CLOSE | PREVIOUS | 1D% | 5D% | 1M% | YTD% |
| Hang Seng | 20506.43 | 20317.33 | 0.93 | -0.41 | -2.97 | 20.29 |
| Nikkei 225 | 38053.67 | 39081.25 | -2.63 | 0.37 | -1.55 | 13.71 |
| Shanghai | 3272.01 | 3279.82 | -0.24 | -0.84 | -1.93 | 9.99 |

| EARLY MORNING MARKETS | | | | | | |
|-----------------------|---------|---------|-------|------|-------|--------|
| | LAST | CLOSE | % CHG | 1D% | 5D% | YTD% |
| TENCENT | 418.40 | 419.20 | -0.19 | 3.61 | -0.43 | 44.45 |
| BHP AUS | 4262.00 | 4278.00 | -0.37 | 0.33 | 0.92 | -10.50 |

NOTE : 5D% and 1M% are rolling percentage moves

INTERNATIONAL ECONOMIC CALENDAR | SELECTED EVENTS

| TIME | AREA | TODAY'S EVENTS & RELEASES | PERIOD | EXP. | PREV. |
|------|------|---------------------------|--------|------|-------|
| -- | US | Total Vehicle Sales | Oct | -- | 15.8M |
| -- | -- | -- | -- | -- | -- |
| -- | -- | -- | -- | -- | -- |
| -- | -- | -- | -- | -- | -- |
| -- | -- | -- | -- | -- | -- |

| TIME | AREA | PREVIOUS SESSION'S RELEASES | PERIOD | EXP. | ACT. |
|-------|------|-----------------------------|--------|--------|-------|
| 11:00 | ZA | ABSA Manufacturing PMI | Oct | 50.6 | 52.6 |
| 14:00 | ZA | Total New Vehicle Sales | Oct | 44.0K | 47.9K |
| 14:30 | US | Non Farm Payrolls | Oct | 180.0K | 12.0K |
| 14:30 | US | Unemployment Rate | Oct | 4.2% | 4.1% |
| 14:30 | US | Average Hourly Earnings m/m | Oct | 0.3% | 0.4% |

JSE ALL SHARE | BEST AND WORST ONE-DAY PERFORMERS

| BEST ONE-DAY % PERFORMERS | | | | | |
|---------------------------|------|-------|------|-------|--------|
| | CODE | CLOSE | 1D% | 5D% | YTD% |
| Metair Investments Ltd | MTA | 1150 | 7.28 | -2.79 | -35.21 |
| PPC Limited | PPC | 414 | 5.08 | 8.66 | 3.76 |
| Sappi Ltd | SAP | 5000 | 4.91 | -0.66 | 13.12 |
| Sasol Limited | SOL | 10233 | 4.23 | -2.52 | -44.77 |
| South32 Limited | S32 | 4283 | 3.70 | -1.31 | 1.52 |
| Kumba Iron Ore Ltd | KIO | 34265 | 3.21 | -0.24 | -44.26 |

| WORST ONE-DAY % PERFORMERS | | | | | |
|----------------------------|------|-------|-------|-------|--------|
| | CODE | CLOSE | 1D% | 5D% | YTD% |
| Karoo000 Ltd | KRO | 69000 | -3.16 | 2.07 | 45.27 |
| African Rainbow Cap Inv | AIL | 725 | -2.29 | -1.76 | 48.26 |
| Super Group Ltd | SPG | 2189 | -2.23 | -5.65 | -26.42 |
| Adcock Ingram Hldgs Ltd | AIP | 6806 | -2.00 | 2.32 | 13.24 |
| Vukile Property Fund Ltd | VKE | 1833 | -1.45 | -0.38 | 29.82 |

DIVIDEND DATA

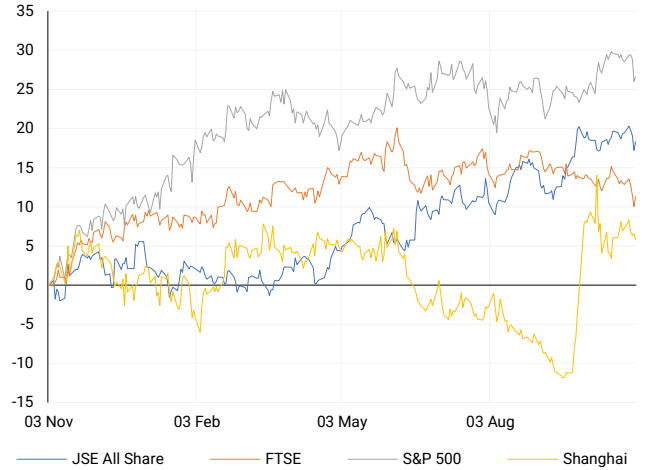
| COMPANY | CODE | EXPECTED DIVIDEND | COMPANY | CODE | EXPECTED DIVIDEND |
|------------------------|------|-------------------|---------|------|-------------------|
| PSG Financial Services | KST | 17 ZARc | -- | -- | -- |
| Bytes Technology | BYI | 3.1 GBPP | -- | -- | -- |
| -- | -- | -- | -- | -- | -- |
| -- | -- | -- | -- | -- | -- |
| -- | -- | -- | -- | -- | -- |

SOURCES | JSE, IRESS, MONEYWEB, CNBC, BBC, CNN

PLEASE SEE THE BOTTOM OF THE LAST PAGE FOR THE FULL DISCLAIMER

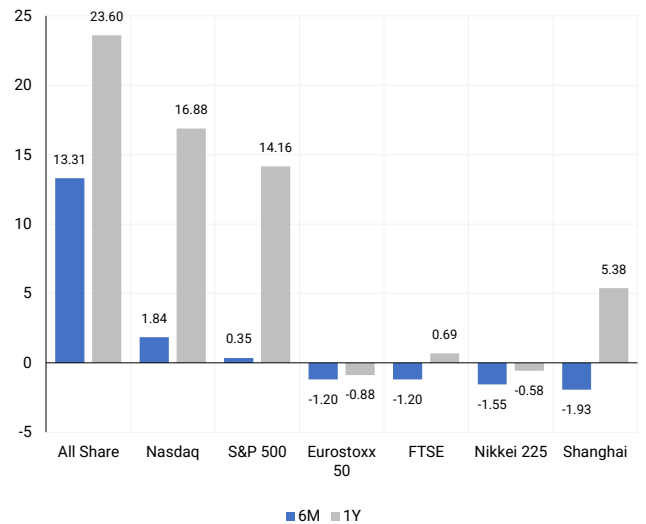
INTERNATIONAL INDICES

Normalised percentage performances - In rand terms



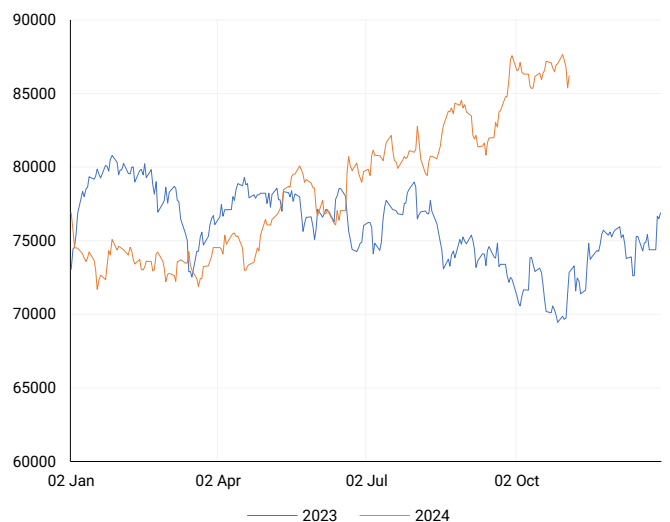
INTERNATIONAL INDICES

6-month & 1-year percentage performances



JSE ALL SHARE INDEX

2023 v 2024 to date



Last date to trade Tue, 05 November

LOCAL EQUITIES | JSE LARGE CAP COMPANIES (Cents Per Share)

| COMPANY | CLOSE | PREVIOUS | 1D% | 5D% | 1M% | YTD% |
|----------------------------|--------|----------|-------|-------|--------|--------|
| Absa Group Limited | 16894 | 16863 | 0.18 | 0.24 | -0.75 | 3.19 |
| Anglo American plc | 54941 | 54336 | 1.11 | -2.00 | -2.52 | 16.03 |
| Anglo American Plat Ltd | 70164 | 68900 | 1.83 | -7.45 | 9.63 | -27.22 |
| Anglogold Ashanti Ltd | 49036 | 48988 | 0.10 | -6.74 | 3.71 | 38.75 |
| Anheuser-Busch InBev SA NV | 105121 | 105045 | 0.07 | -7.95 | -9.42 | -12.41 |
| BHP Group Limited | 49290 | 48792 | 1.02 | -1.62 | -7.94 | -22.19 |
| BID Corporation Ltd | 42474 | 41715 | 1.82 | -0.69 | -3.67 | -0.45 |
| British American Tob plc | 61563 | 61004 | 0.92 | 0.69 | -2.93 | 13.69 |
| Compagnie Fin Richemont | 255150 | 254466 | 0.27 | -2.76 | -5.06 | -0.63 |
| Capitec Bank Hldgs Ltd | 323650 | 317077 | 2.07 | 2.06 | 4.92 | 59.72 |
| Discovery Ltd | 18100 | 18005 | 0.53 | 1.73 | 5.37 | 25.97 |
| Firststrand Ltd | 7749 | 7710 | 0.51 | -3.97 | -5.60 | 5.41 |
| Gold Fields Ltd | 29003 | 29017 | -0.05 | -7.01 | 3.20 | 4.41 |
| Glencore plc | 9261 | 9195 | 0.72 | 0.01 | -6.45 | -17.05 |
| Impala Platinum Hlgs Ltd | 11894 | 11536 | 3.10 | -2.61 | 17.76 | 30.32 |
| Kumba Iron Ore Ltd | 34265 | 33200 | 3.21 | -0.24 | -13.27 | -44.26 |
| Mondi plc | 28678 | 28383 | 1.04 | -1.26 | -11.76 | -21.00 |
| MTN Group Ltd | 8742 | 8753 | -0.13 | -1.79 | -2.61 | -24.31 |
| Naspers Ltd -N- | 421631 | 414417 | 1.74 | -0.12 | -0.49 | 34.79 |
| Prosus N.V. | 75036 | 73715 | 1.79 | -0.92 | -1.16 | 33.90 |
| South32 Limited | 4283 | 4130 | 3.70 | -1.31 | -1.38 | 1.52 |
| Standard Bank Group Ltd | 24542 | 24156 | 1.60 | 3.23 | 2.91 | 17.93 |
| Shoprite Holdings Ltd | 30419 | 30314 | 0.35 | 7.14 | 4.32 | 10.59 |
| Sanlam Limited | 8777 | 8773 | 0.05 | -0.19 | 1.35 | 20.56 |
| Sasol Limited | 10233 | 9818 | 4.23 | -2.52 | -12.49 | -44.77 |
| Sibanye Stillwater Ltd | 2085 | 2027 | 2.86 | -5.70 | 12.58 | -16.27 |
| Vodacom Group Ltd | 10900 | 11000 | -0.91 | -1.30 | 2.34 | 2.83 |

SOUTH AFRICAN MARKET SUMMARY

SELECTED ITEMS

On the stock market, South Africa's blue-chip Top-40 index rose on Friday. Local manufacturing activity grew for the second month in a row in October, a milestone for the volatile sector. Transaction Capital announced that its subsidiary Nutun Business Services has finalized the sale of non-core assets, including Nutun Transact, Accsys, and Nutun Credit Health, to Q Link Holdings in a deal worth up to R510 million, effective November 1. Meanwhile, Caxton and Capital Newspapers have filed a lawsuit to block the Competition Commission's approval of Media24's merger with Novus Holdings.

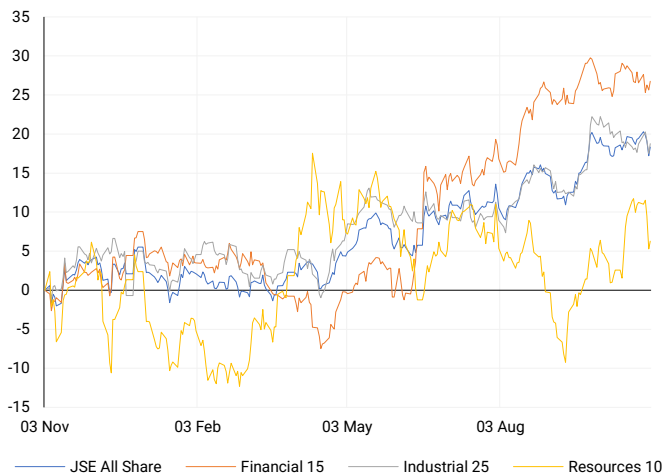
JSE ALL SHARE

One-year



LOCAL INDICES

Normalised percentage performances



LOCAL SENS ANNOUNCEMENTS

SELECTED RELEASE

SASFIN HOLDINGS LIMITED – Implementation of Disposal of Capital Equipment Finance and Commercial Property Finance Businesses

Sasfin Holdings has announced that, as of October 31, 2024, all conditions for the sale of its Capital Equipment Finance and Commercial Property Finance businesses to African Bank Limited have been met. This transaction, effective November 1, 2024, marks a significant step in Sasfin's strategic shift, as previously outlined in announcements made earlier this year.

SFN | 3.54% OPEN | 2806c HIGH | 2806c LOW | 2806c CLOSE | 2806c TIME | 13:58

SEPHAKU HOLDINGS LIMITED – Trading Statement

SepHold informs shareholders that its basic earnings per share for the six months ending September 30, 2024, are expected to increase by 69% to 85%, reaching between 13.1 and 14.3 cents compared to 7.74 cents in the same period last year. Similarly, headline earnings per share are projected to rise by 72% to 87%, reaching between 13.0 and 14.1 cents, up from 7.54 cents in the prior year.

SEP | -0.50% OPEN | 199c HIGH | 206c LOW | 190c CLOSE | 201c TIME | 15:17

EXPECTED COMPANY REPORTING SCHEDULE

| COMPANY | CODE | RELEASE | DATE |
|-----------|------|---------|------------|
| Dis-Chem | DCP | Interim | 4 Nov '24 |
| Sappi | SAP | Final | 8 Nov '24 |
| TFG | TFG | Interim | 8 Nov '24 |
| Clientele | CLI | Final | 13 Nov '24 |
| Vodacom | VOD | Interim | 14 Nov '24 |

BANK AND OTHER SELECTE PREFERENCE SHARES

| COMPANY | CODE | CLOSE | CLEAN YIELD | NEXT LDT (Est.) |
|------------------|------|-------|-------------|-----------------|
| Investec Limited | INPR | 9426 | 11.24 | Thu, 28 Nov '24 |
| Standard Bank | SBPP | 9200 | 11.15 | Wed, 02 Apr '25 |
| Absa | ABSP | 85000 | 11.48 | Wed, 16 Apr '25 |
| Capitec | CPIP | 10200 | 9.69 | Tue, 18 Mar '25 |
| Grindrod | GNDP | 9400 | 12.22 | Wed, 02 Apr '25 |
| Netcare | NTCP | 8699 | 11.82 | Thu, 31 Oct '24 |
| Discovery | DSBP | 10000 | 11.91 | Tue, 18 Mar '25 |

LOCAL EQUITIES | JSE MID CAP COMPANIES (Cents Per Share)

| COMPANY | CODE | CLOSE | PREVIOUS | 1D% | 1M% | YTD% |
|----------------------------|------|-------|----------|-------|--------|--------|
| Aspen Pharmacare Hldgs Ltd | APN | 18141 | 17849 | 1.64 | -6.97 | -10.86 |
| African Rainbow Min Ltd | ARI | 17902 | 17759 | 0.81 | -9.41 | -10.49 |
| AVI Ltd | AVI | 11000 | 11003 | -0.03 | 0.92 | 34.03 |
| Barloworld Ltd | BAW | 8324 | 8263 | 0.74 | -3.21 | 5.37 |
| Bidvest Ltd | BVT | 28663 | 28365 | 1.05 | -0.54 | 13.61 |
| Bytes Technology Grp PLC | BYI | 10429 | 10262 | 1.63 | -10.95 | -27.18 |
| Capital&Counties Prop plc | CCO | 3122 | 3133 | -0.35 | -8.47 | -3.94 |
| Clicks Group Ltd | CLS | 37785 | 37634 | 0.40 | -3.74 | 16.01 |
| Dis-Chem Pharmacies Ltd | DCP | 3681 | 3616 | 1.80 | -2.82 | 19.94 |
| Exxaro Resources Ltd | EXX | 16558 | 16565 | -0.04 | -4.35 | -19.02 |
| Fortress Real Est INV B | FFB | 1917 | 1880 | 1.97 | -5.80 | 33.50 |
| Growthpoint Prop Ltd | GRT | 1308 | 1305 | 0.23 | -6.77 | 11.99 |
| Harmony GM Co Ltd | HAR | 18861 | 18876 | -0.08 | 1.19 | 57.71 |
| Hammerson plc | HMN | 6785 | 6820 | -0.51 | -8.31 | 897.79 |
| Investec Ltd | INL | 13827 | 13750 | 0.56 | 7.80 | 10.10 |
| Investec plc | INP | 13875 | 13708 | 1.22 | 7.92 | 10.16 |
| Italtile Ltd | ITE | 1328 | 1315 | 0.99 | 4.40 | 18.57 |
| Life Healthc Grp Hldgs Ltd | LHC | 1614 | 1595 | 1.19 | -2.77 | -12.14 |
| MultiChoice Group Ltd | MCG | 11100 | 11127 | -0.24 | 0.86 | 37.00 |
| Montauk Renewables Inc | MKR | 9800 | 9718 | 0.84 | 8.29 | -43.02 |
| Mr Price Group Ltd | MRP | 25794 | 25584 | 0.82 | -4.82 | 64.49 |
| Momentum Met Hldgs Ltd | MTM | 2898 | 2879 | 0.66 | -1.40 | 32.39 |
| Ninety One Plc | N91 | 3801 | 3754 | 1.25 | -6.43 | -11.85 |
| Nedbank Group Ltd | NED | 29969 | 29703 | 0.90 | 2.02 | 38.60 |
| Northam Platinum Hldgs Ltd | NPH | 13250 | 13022 | 1.75 | 16.87 | -5.65 |
| NEPI Rockcastle N.V. | NRP | 13947 | 13837 | 0.79 | -3.70 | 10.36 |
| Netcare Limited | NTC | 1507 | 1478 | 1.96 | -2.71 | 5.83 |
| Ninety One Limited | NY1 | 3801 | 3782 | 0.50 | -7.70 | -11.54 |
| Old Mutual Limited | OMU | 1229 | 1217 | 0.99 | -8.76 | -5.90 |
| OUTsurance Group Ltd | OUT | 6079 | 6005 | 1.23 | 3.51 | 44.05 |
| Pick n Pay Stores Ltd | PIK | 2580 | 2545 | 1.38 | -1.90 | 10.87 |
| Pepkor Holdings Ltd | PPH | 2297 | 2285 | 0.53 | -4.81 | 17.01 |
| Quilter Plc | QLT | 3286 | 3246 | 1.23 | 8.99 | 35.34 |
| Redefine Properties Ltd | RDF | 493 | 489 | 0.82 | -0.20 | 28.05 |
| Remgro Ltd | REM | 15450 | 15356 | 0.61 | -1.08 | -4.91 |
| Resilient REIT Limited | RES | 5590 | 5611 | -0.37 | -3.89 | 26.21 |
| Reinet Investments S.C.A | RNI | 48451 | 48929 | -0.98 | 3.09 | 3.93 |
| Sappi Ltd | SAP | 5000 | 4766 | 4.91 | 2.86 | 13.12 |
| Santam Limited | SNT | 36566 | 37064 | -1.34 | -0.37 | 27.60 |
| The Spar Group Ltd | SPP | 12842 | 12653 | 1.49 | -2.62 | 8.92 |
| Sirius Real Estate Ltd | SRE | 2028 | 2043 | -0.73 | -8.57 | -8.44 |
| Tiger Brands Ltd | TBS | 24050 | 23643 | 1.72 | -0.58 | 19.48 |
| Transaction Capital Ltd | TCP | 290 | 290 | 0.00 | -4.92 | -63.66 |
| The Foschini Group Limited | TFG | 15335 | 15344 | -0.06 | -0.92 | 38.20 |
| Thungela Resources Ltd | TGA | 12615 | 12688 | -0.58 | 12.34 | -17.98 |
| Telkom SA SOC Ltd | TKG | 2724 | 2700 | 0.89 | 3.97 | -8.41 |
| Truworths Int Ltd | TRU | 11221 | 11175 | 0.41 | 2.94 | 50.92 |
| Woolworths Holdings Ltd | WHL | 6602 | 6510 | 1.41 | -2.41 | -8.56 |
| Zeda Limited | ZZD | 1450 | 1440 | 0.69 | 5.07 | 13.73 |

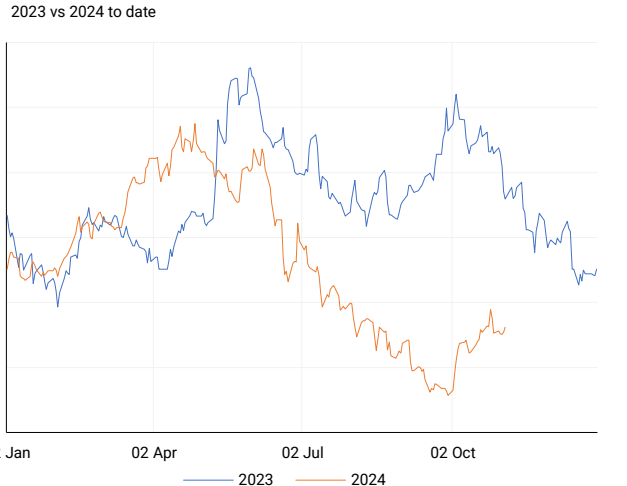
LOCAL EQUITIES | JSE SMALL CAP COMPANIES (Cents Per Share)

| COMPANY | CODE | CLOSE | PREVIOUS | 1D% | 1M% | YTD% |
|----------------------------|------|-------|----------|--------|--------|--------|
| ArcelorMittal SA Limited | ACL | 145 | 144 | 0.69 | 8.21 | -11.59 |
| AdvTECH Ltd | ADH | 3105 | 3126 | -0.67 | -2.36 | 26.53 |
| Altron Limited A | AEL | 1812 | 1837 | -1.36 | 5.96 | 76.78 |
| AECI Limited | AFE | 9789 | 9692 | 1.00 | -3.48 | -10.76 |
| Alexander Forbes Grp Hldgs | AFH | 730 | 726 | 0.55 | 4.14 | 10.61 |
| Afrimat Limited | AFT | 6679 | 6642 | 0.56 | -2.17 | 6.02 |
| African Rainbow Cap Inv | AIL | 725 | 742 | -2.29 | 1.83 | 48.26 |
| Adcock Ingram Hldgs Ltd | AIP | 6806 | 6945 | -2.00 | -1.38 | 13.24 |
| Astral Foods Ltd | ARL | 17181 | 17173 | 0.05 | -7.63 | 17.22 |
| Attacq Limited | ATT | 1341 | 1312 | 2.21 | 5.18 | 45.44 |
| Brait PLC | BAT | 160 | 162 | -1.23 | 9.59 | -12.09 |
| Blue Label Telecoms Ltd | BLU | 553 | 556 | -0.54 | 8.01 | 42.53 |
| Burstone Group | BTN | 938 | 937 | 0.11 | -2.60 | 17.25 |
| Coronation Fund Mngrs Ld | CML | 4004 | 4004 | 0.00 | 4.54 | 28.50 |
| Curro Holdings Limited | COH | 1298 | 1276 | 1.72 | -1.29 | 11.42 |
| Cashbuild Ltd | CSB | 17950 | 17618 | 1.88 | 11.13 | 7.53 |
| DRD Gold Ltd | DRD | 2150 | 2136 | 0.66 | 28.05 | 36.33 |
| Datatec Ltd | DTC | 4068 | 4036 | 0.79 | 8.25 | 0.44 |
| Emira Property Fund Ltd | EMI | 1151 | 1147 | 0.35 | 8.08 | 34.62 |
| Equites Prop Fund Ltd | EQU | 1409 | 1403 | 0.43 | -1.74 | 1.00 |
| Famous Brands Ltd | FBR | 6190 | 6250 | -0.96 | -0.61 | 6.85 |
| Fairvest Limited B | FTB | 466 | 468 | -0.43 | 4.72 | 35.47 |
| Grindrod Ltd | GND | 1422 | 1410 | 0.85 | -3.59 | 24.08 |
| Hosken Cons Inv Ltd | HCI | 18836 | 18556 | 1.51 | 5.05 | -7.03 |
| Hudaco Industries Ltd | HDC | 20152 | 20070 | 0.41 | 5.61 | 25.46 |
| Hyprop Inv Ltd | HYP | 4132 | 4174 | -1.01 | -8.99 | 32.82 |
| JSE Ltd | JSE | 12648 | 12536 | 0.89 | -0.12 | 36.82 |
| KAP Industrial Hldgs Ltd | KAP | 333 | 328 | 1.52 | -2.35 | 27.10 |
| Karoo Ltd | KRO | 69000 | 71250 | -3.16 | 6.86 | 45.27 |
| PSG Konsult Limited | KST | 1860 | 1869 | -0.48 | -0.80 | 21.17 |
| Libstar Holdings Ltd | LBR | 440 | 435 | 1.15 | 9.73 | 25.71 |
| Lighthouse Properties plc | LTE | 779 | 781 | -0.26 | -1.02 | 5.99 |
| Industrials REIT Limited | MLI | 2.5 | 2.8 | -10.71 | 56.25 | 257.14 |
| MAS P.L.C | MSP | 1860 | 1838 | 1.20 | 2.76 | 7.45 |
| Metair Investments Ltd | MTA | 1150 | 1072 | 7.28 | -10.71 | -35.21 |
| Motus Holdings Ltd | MTH | 11795 | 11799 | -0.03 | -1.37 | 16.21 |
| Murray & Roberts Hldgs | MUR | 217 | 222 | -2.25 | -24.13 | 45.64 |
| Oceana Group Ltd | OCE | 6900 | 6795 | 1.55 | -1.02 | -2.36 |
| Omnia Holdings Ltd | OMN | 6636 | 6711 | -1.12 | 2.05 | 1.51 |
| Pan African Resource plc | PAN | 821 | 807 | 1.73 | 7.04 | 100.73 |
| PPC Limited | PPC | 414 | 394 | 5.08 | 4.28 | 3.76 |
| Raubex Group Ltd | RBX | 4729 | 4743 | -0.30 | -9.53 | 70.60 |
| RFG Holdings Limited | RFG | 1630 | 1699 | -4.06 | -2.10 | 20.74 |
| Reunert Ltd | RLO | 8028 | 8025 | 0.04 | -0.27 | 33.93 |
| SA Corp Real Estate Ltd | SAC | 282 | 283 | -0.35 | -6.62 | 21.55 |
| Super Group Ltd | SPG | 2189 | 2239 | -2.23 | -8.06 | -26.42 |
| Stor-Age Prop REIT Ltd | SSS | 1520 | 1511 | 0.60 | 1.06 | 16.39 |
| Southern Sun LTD | SSU | 840 | 835 | 0.60 | 12.30 | 60.00 |
| Sun International Ltd | SUI | 4570 | 4543 | 0.59 | 0.44 | 11.46 |
| Tharisa plc | THA | 1670 | 1625 | 2.77 | -8.99 | 10.52 |
| Tsogo Sun Gaming Ltd | TSG | 1225 | 1239 | -1.13 | 0.41 | 0.00 |
| Vukile Property Fund Ltd | VKE | 1833 | 1860 | -1.45 | 0.22 | 29.82 |
| Wilson Bayly Hlm-Ovc Ltd | WBO | 21408 | 21523 | -0.53 | -6.33 | 64.60 |

10-YEAR BOND YIELD | SELECTED ITEMS (Basis Point Change)

| REGION | YIELD | 1D | 1M | 1Y |
|-------------------|-------|----|----|------|
| United States | 4.38% | 10 | 54 | — |
| United Kingdom | 4.44% | 0 | 43 | 16 |
| Germany | 2.40% | 2 | 26 | -24 |
| Japan | 0.93% | 0 | 12 | — |
| South African 10Y | 9.32% | 1 | 26 | -105 |

SOUTH AFRICAN 10-YEAR



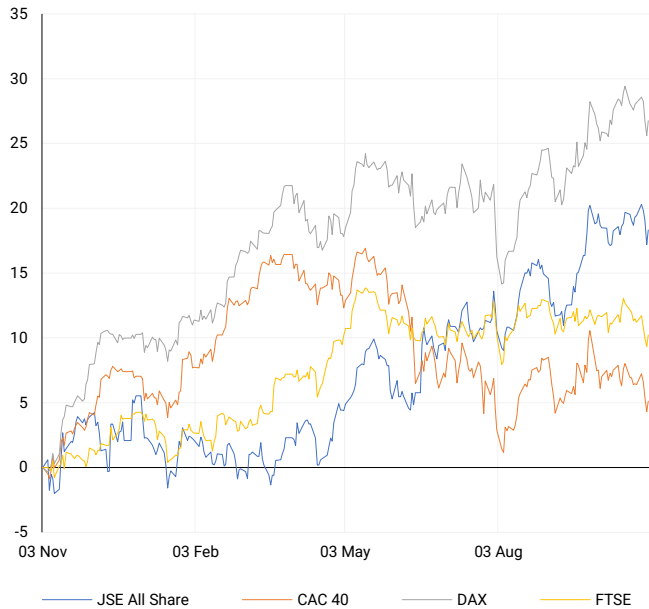
GLOBAL INTEREST RATES | SELECTED ITEMS

| REGION | DATE CHANGED | CURRENT RATE |
|----------------|--------------|--------------|
| United States | Sep '24 | 4.75%-5.00% |
| United Kingdom | Aug '24 | 5.00% |
| European | Oct '24 | 3.40% |
| SA Repo Rate | Sep '24 | 8.00% |
| SA Prime Rate | Sep '24 | 11.50% |

SOURCES | JSE, IRESS, MONEYWEB, CNBC, BBC, CNN

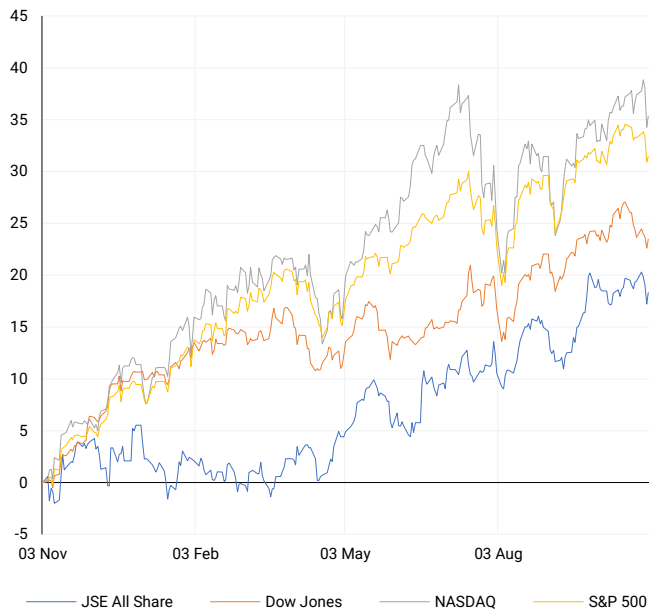
EUROPEAN INDICES

Normalised percentage performances



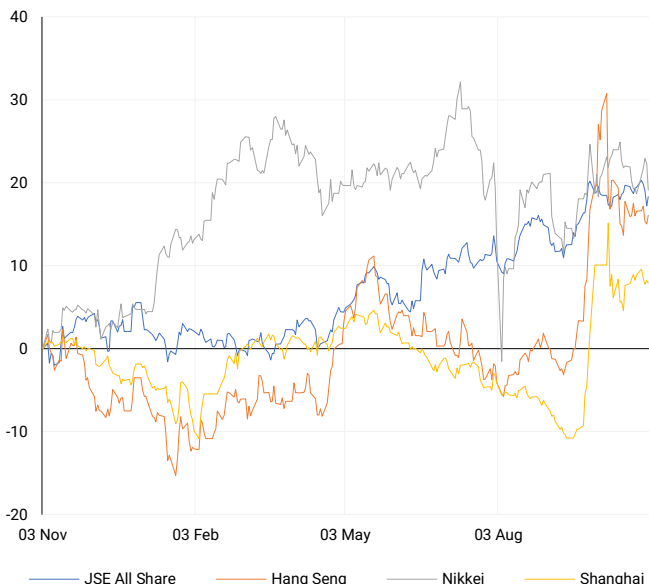
AMERICAN INDICES

Normalised percentage performances



ASIAN INDICES

Normalised percentage performances

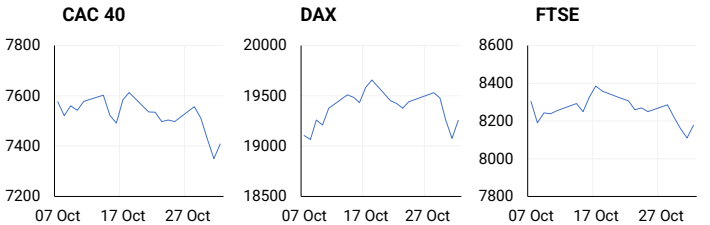


EUROPEAN MARKET SUMMARY

SELECTED ITEMS

Europe's main stock index saw its largest one-day increase in five weeks on Friday, led by banks as markets rebounded after recent drops. Investors weighed economic data and corporate earnings, while remaining cautious about the European Central Bank's uncertain interest-rate cut path amid evolving economic conditions.

| EUROPEAN INDICES | CLOSE | PREVIOUS | 1D% | 5D% | 1M% | YTD% |
|------------------|----------|----------|------|-------|-------|-------|
| CAC 40 | 7409.11 | 7350.37 | 0.80 | -1.18 | -2.18 | -1.78 |
| DAX 30 | 19254.97 | 19077.54 | 0.93 | -1.07 | 0.22 | 14.94 |
| Eurostoxx 50 | 4878.05 | 4826.80 | 1.06 | -1.31 | -1.20 | 7.88 |
| FTSE | 8177.15 | 8110.10 | 0.83 | -0.87 | -1.20 | 5.74 |



AMERICAN MARKET SUMMARY

SELECTED ITEMS

Wall Street's main indices closed higher on Friday, recovering from Thursday's losses as Amazon's strong earnings helped offset weak job growth in October. U.S. nonfarm payrolls showed only a 12,000 job increase, well below the expected 113,000, due to hurricane and strike disruptions. Despite this, the unemployment rate stayed steady at 4.1%, easing concerns about the labour market's stability. Investors still expect the central bank to cut rates by 0.25% in November. With the U.S. election approaching, there's anticipation over the close presidential race, adding some uncertainty ahead of the Fed's upcoming meeting.

| AMERICAN INDICES | CLOSE | PREVIOUS | 1D% | 5D% | 1M% | YTD% |
|------------------|----------|----------|-------|-------|-------|-------|
| Dow Jones | 42052.19 | 41763.46 | 0.69 | -0.15 | -0.25 | 11.58 |
| Nasdaq | 18239.92 | 18095.15 | 0.80 | -1.50 | 1.84 | 21.51 |
| S&P 500 | 5728.80 | 5705.45 | 0.41 | -1.37 | 0.35 | 20.10 |
| US VIX | 21.88 | 23.16 | -5.53 | 7.62 | 13.60 | 75.74 |



ASIAN MARKET SUMMARY

SELECTED ITEMS

Asia-Pacific markets rose this morning as investors prepared for a busy week of economic updates. China's parliament meeting, starting today, is expected to conclude Friday with announcements on fiscal support. China's October trade data, due Thursday, follows disappointing export and import figures in September. South Korea will report its October inflation rate on Tuesday, which is estimated to ease to 1.4% from higher levels earlier this year. Australia's central bank is also set to announce its interest rate decision on Tuesday, with economists predicting it will hold steady at 4.35%. Japan's markets were closed Monday for a holiday.

| ASIAN INDICES | CLOSE | PREVIOUS | 1D% | 5D% | 1M% | YTD% |
|---------------|----------|----------|-------|-------|-------|-------|
| Hang Seng | 20506.43 | 20317.33 | 0.93 | -0.41 | -2.97 | 20.29 |
| Nikkei 225 | 38053.67 | 39081.25 | -2.63 | 0.37 | -1.55 | 13.71 |
| Shanghai | 3272.01 | 3279.82 | -0.24 | -0.84 | -1.93 | 9.99 |



COMMODITIES MARKET SUMMARY

SELECTED ITEMS

Gold prices remained stable this morning as investors looked ahead to a significant week for the global economy, including the U.S. presidential election and a possible rate cut by the Federal Reserve. Meanwhile, oil prices climbed over \$1 in early trading after OPEC+ announced it would delay its planned December output increase by one month, citing weak demand and rising supply from non-OPEC sources.

| COMMODITY | LAST | CLOSE | % CHG | 1D% | 5D% | YTD% |
|-------------|---------|---------|-------|-------|-------|-------|
| Brent Crude | 74.35 | 72.91 | 1.98 | -0.36 | -4.04 | -5.41 |
| Gold | 2739.94 | 2736.36 | 0.13 | -0.28 | -0.42 | 32.64 |
| Palladium | 1115.60 | 1105.29 | 0.93 | -1.32 | -7.68 | 0.73 |
| Platinum | 1001.58 | 995.35 | 0.63 | 0.14 | -2.95 | 0.82 |
| Silver | 32.70 | 32.45 | 0.77 | -0.64 | -3.77 | 36.41 |

BRENT CRUDE

One-year



PLATINUM

One-year



GOLD

One-year



CURRENCY MARKET SUMMARY

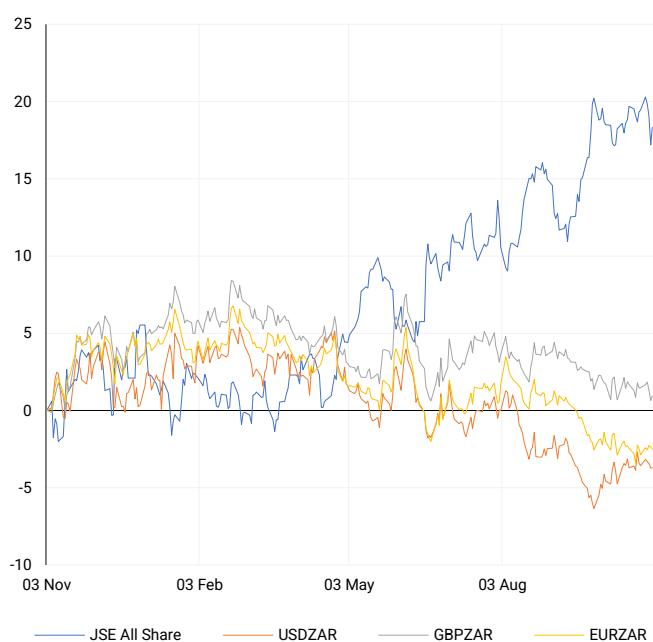
SELECTED ITEMS

South Africa's rand strengthened slightly on Friday following the release of the domestic manufacturing sector's purchasing managers' index (PMI) and U.S. jobs data. The dollar weakened in Asia this morning as investors anticipated a pivotal week for the global economy, with the U.S. presidential election and an expected interest rate cut that could significantly impact bond yields.

| CURRENCY PAIR | LAST | CLOSE | % CHG | 1D% | 5D% | YTD% |
|---------------|--------|--------|-------|-------|-------|-------|
| USDZAR | 17.53 | 17.60 | -0.44 | 0.03 | -0.13 | -3.94 |
| GBPZAR | 22.77 | 22.80 | -0.13 | 0.29 | -0.53 | -2.15 |
| EURZAR | 19.10 | 19.12 | -0.08 | -0.14 | 0.37 | -5.32 |
| AUDZAR | 11.58 | 11.64 | -0.47 | 0.47 | -0.14 | -6.57 |
| EURUSD | 1.09 | 1.09 | 0.17 | -0.03 | 0.79 | -1.43 |
| USDJPY | 151.78 | 152.25 | -0.31 | 0.14 | -0.65 | 7.95 |
| GBPUSD | 1.30 | 1.30 | 0.15 | 0.56 | -0.02 | 1.88 |
| USDCHF | 0.86 | 0.87 | -0.28 | 0.42 | -0.12 | 3.07 |

CURRENCY PAIRS vs JSE ALL SHARE

Normalised percentage performances



USDZAR

One-year



EURUSD

One-year



SOURCES | JSE, IRESS, MONEYWEB, CNBC, BBC, CNN

Disclaimer: This note is prepared for Sanlam Private Wealth (Pty) Ltd, by K2013143132 (Pty) Ltd trading as ThompsonGreen. ThompsonGreen is an independent company contracted to Sanlam Private Wealth (Pty) Ltd. The views expressed in this note are those of ThompsonGreen and/or its analysts and not necessarily the views of Sanlam Private Wealth (Pty) Ltd, Sanlam or any officer or agent thereof. K2013143132 (Pty) Ltd trading as ThompsonGreen is a research house and not a registered broker, financial adviser or financial service provider. Our editors and customer services teams also do not give personal investment advice. The information in this document is general advice only and may not be appropriate to your particular investment objectives, financial situation or particular needs. Before investing, or if you are in any doubt about your personal situation, you should seek professional advice from a stockbroker or independent financial adviser authorised by the Financial Sector Conduct Authority.