

GLOBAL OVERVIEW | SELECTED INDICES

SOUTH AFRICAN INDICES						
	CLOSE	PREVIOUS	1D%	5D%	1M%	YTD%
All Share	86223.60	86198.57	0.03	-1.62	-0.13	12.13
Top 40	78052.33	78091.69	-0.05	-1.70	-0.29	10.72
Financial 15	21204.36	21075.03	0.61	-0.08	1.39	18.64
Industrial 25	117116.83	117330.97	-0.18	-1.06	-1.91	12.92
Resource 10	59340.94	59737.71	-0.66	-4.89	0.88	3.14
Mid Cap	92542.58	92353.08	0.21	-1.98	1.48	15.08
Small Cap	88618.72	88323.18	0.33	-1.15	0.57	22.24
Banks	13180.14	13115.10	0.50	0.19	1.40	20.39
Retailers	7903.97	7849.44	0.69	0.62	1.69	26.80
Property (J253) - TR	2381.69	2364.26	0.74	-1.49	0.09	27.79

AMERICAN INDICES						
	CLOSE	PREVIOUS	1D%	5D%	1M%	YTD%
Dow Jones	41794.60	42052.19	-0.61	-1.40	-1.32	10.89
Nasdaq	18179.98	18239.92	-0.33	-2.09	0.23	21.11
S&P 500	5712.69	5728.80	-0.28	-1.90	-0.67	19.77
US VIX	21.98	21.88	0.46	11.01	14.42	76.55

EUROPEAN INDICES						
	CLOSE	PREVIOUS	1D%	5D%	1M%	YTD%
CAC 40	7371.71	7409.11	-0.50	-2.45	-2.25	-2.27
DAX 30	19147.76	19254.97	-0.56	-1.97	0.14	14.30
Eurostoxx 50	4868.50	4878.05	-0.20	-1.63	-1.74	7.67
FTSE	8184.24	8177.15	0.09	-1.22	-1.16	5.83

ASIAN INDICES						
	CLOSE	PREVIOUS	1D%	5D%	1M%	YTD%
Hang Seng	20567.52	20506.43	0.30	-0.15	-9.54	20.65
Nikkei 225	38053.67	38053.67	0.00	-1.43	-1.51	13.71
Shanghai	3310.21	3272.01	1.17	-0.36	-0.79	11.27

EARLY MORNING MARKETS						
	LAST	CLOSE	% CHG	1D%	5D%	YTD%
TENCENT	423.00	419.00	0.95	-0.05	0.43	44.38
BHP AUS	4282.00	4260.00	0.52	-0.42	-0.84	-10.88

NOTE: 5D% and 1M% are rolling percentage moves

INTERNATIONAL ECONOMIC CALENDAR | SELECTED EVENTS

TIME	AREA	TODAY'S EVENTS & RELEASES	PERIOD	EXP.	PREV.
09:15	ZA	S&P Global PMI	Oct	50.8	51.0
17:00	US	ISM Services PMI	Oct	54.8	54.9
--	US	Presidential Election	--	--	--
--	US	Congressional Elections	--	--	--
--	--	--	--	--	--

TIME	AREA	PREVIOUS SESSION'S RELEASES	PERIOD	EXP.	ACT.
--	--	--	--	--	--
--	--	--	--	--	--
--	--	--	--	--	--
--	--	--	--	--	--
--	--	--	--	--	--

JSE ALL SHARE | BEST AND WORST ONE-DAY PERFORMERS

BEST ONE-DAY % PERFORMERS					
	CODE	CLOSE	1D%	5D%	YTD%
Hosken Cons Inv Ltd	HCI	19700	4.59	4.79	-2.76
Italtile Ltd	ITE	1375	3.54	4.48	22.77
African Rainbow Cap Inv	AIL	750	3.45	4.17	53.37
Altron Limited A	AEL	1870	3.20	2.24	82.44
Old Mutual Limited	OMU	1265	2.93	2.85	-3.14
Karoo000 Ltd	KRO	71000	2.90	1.01	49.48

WORST ONE-DAY % PERFORMERS					
	CODE	CLOSE	1D%	5D%	YTD%
DRD Gold Ltd	DRD	2071	-3.67	-5.00	31.33
Sibanye Stillwater Ltd	SSW	2030	-2.64	-9.29	-18.47
AngloGold Ashanti plc	ANG	48073	-1.96	-7.04	36.03
Dataotec Ltd	DTC	3994	-1.82	-0.77	-1.38
Anglo American Plat Ltd	AMS	68967	-1.71	-11.22	-28.46

DIVIDEND DATA

COMPANY	CODE	EXPECTED DIVIDEND	COMPANY	CODE	EXPECTED DIVIDEND
PSG Financial Services	KST	17 ZARc	--	--	--
Bytes Technology	BYI	3.1 GBPP	--	--	--
--	--	--	--	--	--
--	--	--	--	--	--
--	--	--	--	--	--

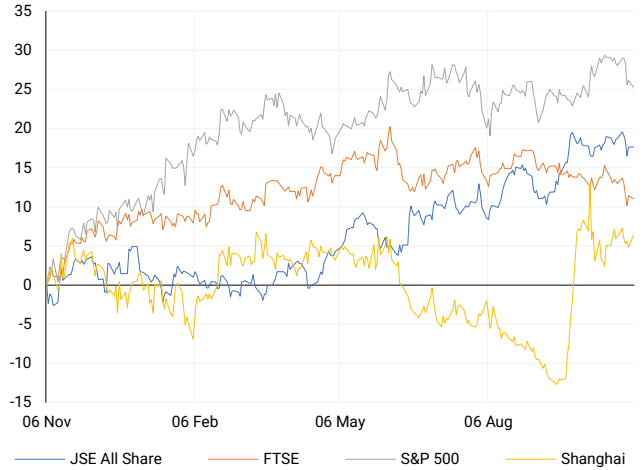
Last date to trade Tue, 05 November

SOURCES | JSE, IRESS, MONEYWEB, CNBC, BBC, CNN

PLEASE SEE THE BOTTOM OF THE LAST PAGE FOR THE FULL DISCLAIMER

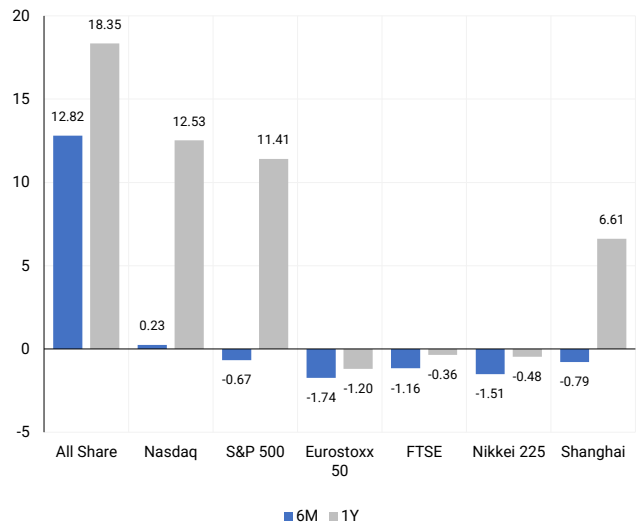
INTERNATIONAL INDICES

Normalised percentage performances - In rand terms



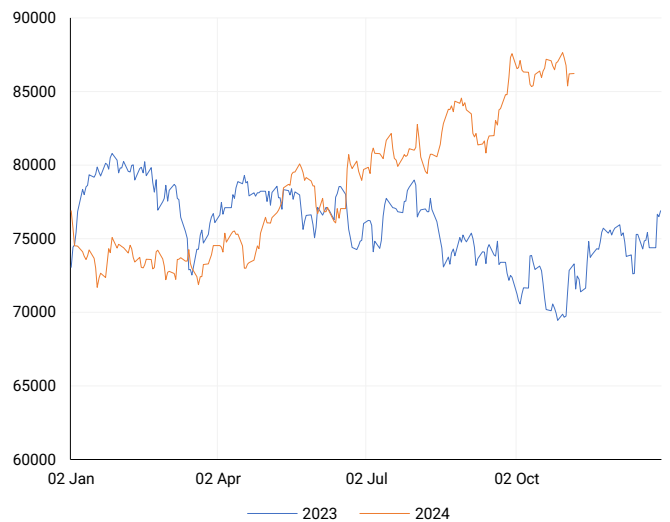
INTERNATIONAL INDICES

6-month & 1-year percentage performances



JSE ALL SHARE INDEX

2023 v 2024 to date



LOCAL EQUITIES | JSE LARGE CAP COMPANIES (Cents Per Share)

COMPANY	CLOSE	PREVIOUS	1D%	5D%	1M%	YTD%
Absa Group Limited	17011	16894	0.69	-0.57	0.39	3.91
Anglo American plc	55225	54941	0.52	-2.86	-0.13	16.63
Anglo American Plat Ltd	68967	70164	-1.71	-11.22	3.30	-28.46
Anglogold Ashanti Ltd	48073	49036	-1.96	-7.04	4.05	36.03
Anheuser-Busch InBev SA NV	104090	105121	-0.98	-9.21	-9.73	-13.27
BHP Group Limited	49352	49290	0.13	-2.27	-6.97	-22.09
BID Corporation Ltd	42021	42474	-1.07	-2.35	-4.87	-1.51
British American Tob plc	61600	61563	0.06	0.09	0.46	13.76
Compagnie Fin Richemont	253672	255150	-0.58	-3.52	-5.15	-1.20
Capitec Bank Hldgs Ltd	325000	323650	0.42	2.15	5.50	60.39
Discovery Ltd	18218	18100	0.65	0.85	6.99	26.80
Firststrand Ltd	7741	7749	-0.10	-2.82	-5.19	5.31
Gold Fields Ltd	28540	29003	-1.60	-6.96	4.22	2.74
Glencore plc	9306	9261	0.49	-0.28	-6.15	-16.65
Impala Platinum Hlgs Ltd	11841	11894	-0.45	-6.04	10.84	29.74
Kumba Iron Ore Ltd	34550	34265	0.83	-1.95	-9.56	-43.80
Mondi plc	28526	28678	-0.53	-2.27	-12.06	-21.42
MTN Group Ltd	8868	8742	1.44	0.08	3.31	-23.22
Naspers Ltd -N-	418000	421631	-0.86	-1.37	-3.48	33.63
Prosus N.V.	74978	75036	-0.08	-1.44	-4.34	33.80
South32 Limited	4295	4283	0.28	-1.83	-1.29	1.80
Standard Bank Group Ltd	24827	24542	1.16	2.40	4.59	19.30
Shoprite Holdings Ltd	30325	30419	-0.31	4.77	4.57	10.25
Sanlam Limited	8883	8777	1.21	-0.82	2.20	22.02
Sasol Limited	10494	10233	2.55	4.56	-17.14	-43.36
Sibanye Stillwater Ltd	2030	2085	-2.64	-9.29	-0.20	-18.47
Vodacom Group Ltd	11015	10900	1.06	-2.65	4.79	3.92

SOUTH AFRICAN MARKET SUMMARY

SELECTED ITEMS

On the Johannesburg Stock Exchange, the blue-chip Top 40 index closed 0.05% lower at 78,052 points on Monday, while the JSE All Share index ended the session 0.03% higher at 86,223 points. Redefine Properties, a South African and Polish real estate investment trust with a portfolio nearing R100 billion, reported a 2.9% decline in both its distributable income per share (DIPS) and dividend per share (DPS) for the year ending August 31, 2024. The Competition Tribunal's decision to block Vodacom's merger with a major fiber operator may hinder South African telecom companies' efforts to rapidly expand digital infrastructure through large mergers, analysts say.

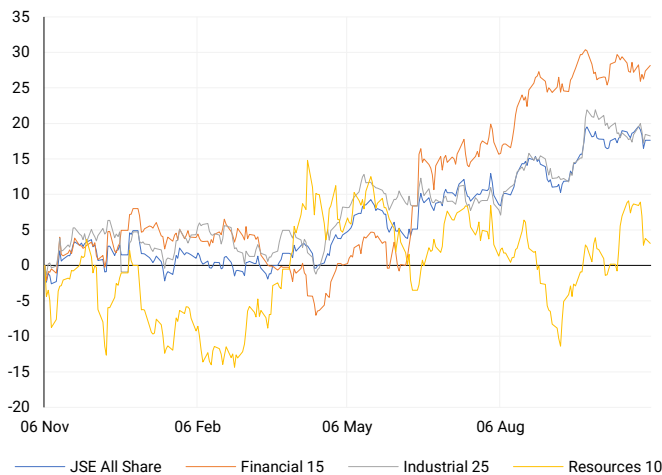
JSE ALL SHARE

One-year



LOCAL INDICES

Normalised percentage performances



LOCAL SENS ANNOUNCEMENTS

SELECTED RELEASE

ALTRON LIMITED – Unaudited Consolidated Results

The company saw strong profit growth, primarily driven by its Platforms segment. It updated its guidance to reflect the addition of Altron Document Solutions (ADS) to ongoing operations. Revenue reached R4.9 billion, a 2% decline due to the sale of the ATM business. However, EBITDA rose by 49% to R905 million, and operating profit more than doubled to R477 million. Headline Earnings per Share (HEPS) increased by over 100% to 79 cents, and Earnings per Share (EPS) similarly rose to 75 cents. Excluding ADS and the ATM business, revenue grew 4%, EBITDA rose 23%, operating profit went up 29%, HEPS rose 50%, and EPS increased 84%.

AEL | 3.20% OPEN | 103c HIGH | 105c LOW | 103c CLOSE | 105c TIME | 07:05

COLLINS PROPERTY GROUP LIMITED – Unaudited Consolidated Financial Statements

For the period ending August 31, 2024, the company reported a 4% increase in revenue to R628.7 million. Basic earnings per share (EPS) rose by 28.6% to 54 cents, while headline EPS dropped by 7.9% to 35 cents. Net asset value per share increased by 18.9% to 1,501 cents, and the interim dividend per share went up by 25% to 50 cents. However, net profit attributable to ordinary shareholders decreased by 9.72% to R120.8 million.

CPP | 14.09% OPEN | 103c HIGH | 105c LOW | 103c CLOSE | 105c TIME | 09:00

EXEMPLAR REITAIL LIMITED – Unaudited condensed consolidated interim results

For the six months ending August 31, 2024, the company achieved a 9.79% increase in revenue to R638.5 million. Net property income rose by 12.15% to R408.2 million, and net property income before operating lease adjustments grew by 11.09% to R402.4 million. Basic earnings per share (EPS) were up 3.03% to 111.99 cents, while headline EPS increased significantly by 28.48% to 62.47 cents. The net asset value per share grew by 6.43% to R15.26, and the interim dividend per share rose by 9.3% to 70.25 cents.

EXP | 0.00% OPEN | 103c HIGH | 105c LOW | 103c CLOSE | 105c TIME | 09:30

REDEFINE PROPERTIES LIMITED – Group Audited Annual Results

For the period ending August 31, 2024, the company recorded a 7.5% increase in revenue to R10.7 billion. Headline earnings per share (HEPS) rose by 57.3% to 33.06 cents, while basic earnings per share (EPS) more than doubled to 58.79 cents. Distributable income per share decreased by 2.9% to 50.02 cents, and the dividend per share also dropped by 2.9% to 42.52 cents. The SA REIT net asset value per share increased slightly by 2.9% to 788.28 cents.

RDF | 0.81% OPEN | 103c HIGH | 105c LOW | 103c CLOSE | 105c TIME | 09:00

EXPECTED COMPANY REPORTING SCHEDULE

COMPANY	CODE	RELEASE	DATE
Sappi	SAP	Final	8 Nov '24
TFG	TFG	Interim	8 Nov '24
Clientele	CLI	Final	13 Nov '24
Vodacom	VOD	Interim	14 Nov '24
Reinet	RNI	Interim	15 Nov '24

BANK AND OTHER SELECTE PREFERENCE SHARES

COMPANY	CODE	CLOSE	CLEAN YIELD	NEXT LDT (Est.)
Investec Limited	INPR	9380	11.24	Thu, 28 Nov '24
Standard Bank	SBPP	9200	11.15	Wed, 02 Apr '25
Absa	ABSP	84401	11.48	Wed, 16 Apr '25
Capitec	CPIP	10200	9.69	Tue, 18 Mar '25
Grindrod	GNDP	9400	12.22	Wed, 02 Apr '25
Netcare	NTCP	8699	11.82	Thu, 31 Oct '24
Discovery	DSBP	10619	11.91	Tue, 18 Mar '25

LOCAL EQUITIES | JSE MID CAP COMPANIES (Cents Per Share)

COMPANY	CODE	CLOSE	PREVIOUS	1D%	1M%	YTD%
Aspen Pharmacare Hldgs Ltd	APN	18085	18141	-0.31	-5.81	-11.13
African Rainbow Min Ltd	ARI	17897	17902	-0.03	-5.51	-10.52
AVI Ltd	AVI	10980	11000	-0.18	1.05	33.79
Barloworld Ltd	BAW	8345	8324	0.25	-2.27	5.63
Bidvest Ltd	BVT	28600	28663	-0.22	1.02	13.36
Bytes Technology Grp PLC	BYI	10394	10429	-0.34	-10.29	-27.42
Capital&Counties Prop plc	CCO	3084	3122	-1.22	-6.83	-5.11
Clicks Group Ltd	CLS	37754	37785	-0.08	0.25	15.91
Dis-Chem Pharmacies Ltd	DCP	3770	3681	2.42	0.45	22.84
Exxaro Resources Ltd	EXX	16433	16558	-0.75	-0.63	-19.64
Fortress Real Est INV B	FFB	1924	1917	0.37	-4.85	33.98
Growthpoint Prop Ltd	GRT	1322	1308	1.07	-4.20	13.18
Harmony GM Co Ltd	HAR	18662	18861	-1.06	8.73	56.05
Hammerson plc	HMN	6809	6785	0.35	-3.83	901.32
Investec Ltd	INL	13766	13827	-0.44	6.59	9.61
Investec plc	INP	13832	13875	-0.31	6.69	9.82
Italtile Ltd	ITE	1375	1328	3.54	6.59	22.77
Life Healthc Grp Hldgs Ltd	LHC	1650	1614	2.23	-3.00	-10.18
MultiChoice Group Ltd	MCG	11180	11100	0.72	1.60	37.99
Montauk Renewables Inc	MKR	9800	9800	0.00	3.16	-43.02
Mr Price Group Ltd	MRP	26290	25794	1.92	-0.38	67.66
Momentum Met Hldgs Ltd	MTM	2930	2898	1.10	-0.37	33.85
Ninety One Plc	N91	3787	3801	-0.37	-9.83	-12.18
Nedbank Group Ltd	NED	30303	29969	1.11	4.16	40.14
Northam Platinum Hldgs Ltd	NPH	13160	13250	-0.68	11.75	-6.29
NEPI Rockcastle N.V.	NRP	14064	13947	0.84	-0.50	11.28
Netcare Limited	NTC	1508	1507	0.07	-3.15	5.90
Ninety One Limited	NY1	3800	3801	-0.03	-10.59	-11.57
Old Mutual Limited	OMU	1265	1229	2.93	-4.38	-3.14
OUTsurance Group Ltd	OUT	6156	6079	1.27	3.88	45.88
Pick n Pay Stores Ltd	PIK	2606	2580	1.01	-10.32	11.99
Pepkor Holdings Ltd	PPH	2306	2297	0.39	-3.11	17.47
Quilter Plc	QLT	3319	3286	1.00	7.93	36.70
Redefine Properties Ltd	RDF	497	493	0.81	-0.20	29.09
Remgro Ltd	REM	15412	15450	-0.25	-1.53	-5.15
Resilient REIT Limited	RES	5669	5590	1.41	-0.32	28.00
Reinet Investments S.C.A	RNI	48246	48451	-0.42	5.28	3.49
Sappi Ltd	SAP	5026	5000	0.52	1.49	13.71
Santam Limited	SNT	36642	36566	0.21	0.66	27.86
The Spar Group Ltd	SPP	12890	12842	0.37	-2.20	9.33
Sirius Real Estate Ltd	SRE	2018	2028	-0.49	-6.05	-8.89
Tiger Brands Ltd	TBS	24180	24050	0.54	0.33	20.13
Transaction Capital Ltd	TCP	291	290	0.34	-7.62	-63.53
The Foschini Group Limited	TFG	15553	15335	1.42	3.86	40.17
Thungela Resources Ltd	TGA	12636	12615	0.17	3.01	-17.84
Telkom SA SOC Ltd	TKG	2719	2724	-0.18	0.97	-8.57
Truworths Int Ltd	TRU	11212	11221	-0.08	9.39	50.80
Woolworths Holdings Ltd	WHL	6570	6602	-0.48	-0.90	-9.00
Zeda Limited	ZZD	1444	1450	-0.41	2.05	13.25

LOCAL EQUITIES | JSE SMALL CAP COMPANIES (Cents Per Share)

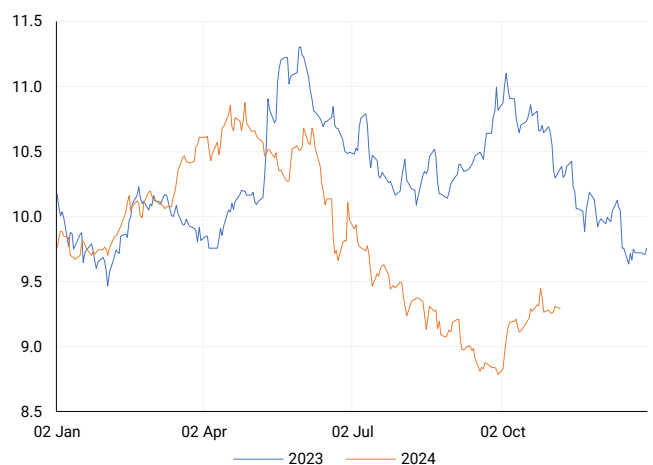
COMPANY	CODE	CLOSE	PREVIOUS	1D%	1M%	YTD%
ArcelorMittal SA Limited	ACL	135	145	-6.90	-8.16	-17.68
AdvTECH Ltd	ADH	3185	3105	2.58	1.34	29.79
Altron Limited A	AEL	1870	1812	3.20	6.74	82.44
AECI Limited	AFE	9870	9789	0.83	-2.76	-10.02
Alexander Forbes Grp Hldgs	AFH	740	730	1.37	3.64	12.12
Afrimat Limited	AFT	6671	6679	-0.12	-1.35	5.89
African Rainbow Cap Inv	AIL	750	725	3.45	2.04	53.37
Adcock Ingram Hldgs Ltd	AIP	6960	6806	2.26	-0.93	15.81
Astral Foods Ltd	ARL	17190	17181	0.05	-4.87	17.28
Attacq Limited	ATT	1346	1341	0.37	10.69	45.99
Brait PLC	BAT	164	160	2.50	8.61	-9.89
Blue Label Telecoms Ltd	BLU	552	553	-0.18	9.31	42.27
Burstone Group	BTN	951	938	1.39	-0.52	18.88
Coronation Fund Mngrs Ld	CML	3990	4004	-0.35	4.72	28.05
Curro Holdings Limited	COH	1310	1298	0.92	0.00	12.45
Cashbuild Ltd	CSB	18105	17950	0.86	8.03	8.46
DRD Gold Ltd	DRD	2071	2150	-3.67	20.41	31.33
Dataotec Ltd	DTC	3994	4068	-1.82	10.06	-1.38
Emira Property Fund Ltd	EMI	1154	1151	0.26	7.85	34.97
Equites Prop Fund Ltd	EQU	1416	1409	0.50	-0.63	1.51
Famous Brands Ltd	FBR	6336	6190	2.36	0.84	9.37
Fairvest Limited B	FTB	472	466	1.29	4.42	37.21
Grindrod Ltd	GND	1415	1422	-0.49	-7.33	23.47
Hosken Cons Inv Ltd	HCI	19700	18836	4.59	12.01	-2.76
Hudaco Industries Ltd	HDC	20350	20152	0.98	7.11	26.69
Hyprop Inv Ltd	HYP	4208	4132	1.84	-5.44	35.26
JSE Ltd	JSE	12600	12648	-0.38	0.16	36.30
KAP Industrial Hldgs Ltd	KAP	332	333	-0.30	-2.64	26.72
Karooooo Ltd	KRO	71000	69000	2.90	5.34	49.48
PSG Konsult Limited	KST	1862	1860	0.11	2.08	21.30
Libstar Holdings Ltd	LBR	436	440	-0.91	4.31	24.57
Lighthouse Properties plc	LTE	783	779	0.51	-1.51	6.53
Industrials REIT Limited	MLI	25	25	0.00	56.25	3471.43
MAS P.L.C	MSP	1853	1860	-0.38	3.87	7.05
Metair Investments Ltd	MTA	1142	1150	-0.70	-9.44	-35.66
Motus Holdings Ltd	MTH	11800	11795	0.04	2.18	16.26
Murray & Roberts Hldgs	MUR	230	217	5.99	-15.44	54.36
Oceana Group Ltd	OCE	6900	6900	0.00	0.39	-2.36
Omnia Holdings Ltd	OMN	6613	6636	-0.35	1.86	1.16
Pan African Resource plc	PAN	810	821	-1.34	3.05	98.04
PPC Limited	PPC	416	414	0.48	6.94	4.26
Raubex Group Ltd	RBX	4700	4729	-0.61	-9.21	69.55
RFG Holdings Limited	RFG	1635	1630	0.31	-4.16	21.11
Reunert Ltd	RLO	8025	8028	-0.04	-0.37	33.88
SA Corp Real Estate Ltd	SAC	282	282	0.00	-5.69	21.55
Super Group Ltd	SPG	2193	2189	0.18	-5.80	-26.29
Stor-Age Prop REIT Ltd	SSS	1527	1520	0.46	-0.33	16.92
Southern Sun LTD	SSU	843	840	0.36	4.72	60.57
Sun International Ltd	SUI	4500	4570	-1.53	-0.07	9.76
Tharisa plc	THA	1698	1670	1.68	-4.87	12.38
Tsogo Sun Gaming Ltd	TSG	1237	1225	0.98	-0.16	0.98
Vukile Property Fund Ltd	VKE	1831	1833	-0.11	-1.03	29.67
Wilson Bayly Hlm-Ovc Ltd	WBO	21067	21408	-1.59	-3.36	61.98

10-YEAR BOND YIELD | SELECTED ITEMS (Basis Point Change)

REGION	YIELD	1D	1M	1Y
United States	4.29%	-9	33	-
United Kingdom	4.45%	1	33	17
Germany	2.39%	-1	18	-25
Japan	0.93%	0	6	-
South African 10Y	9.31%	-2	10	-109

SOUTH AFRICAN 10-YEAR

2023 vs 2024 to date

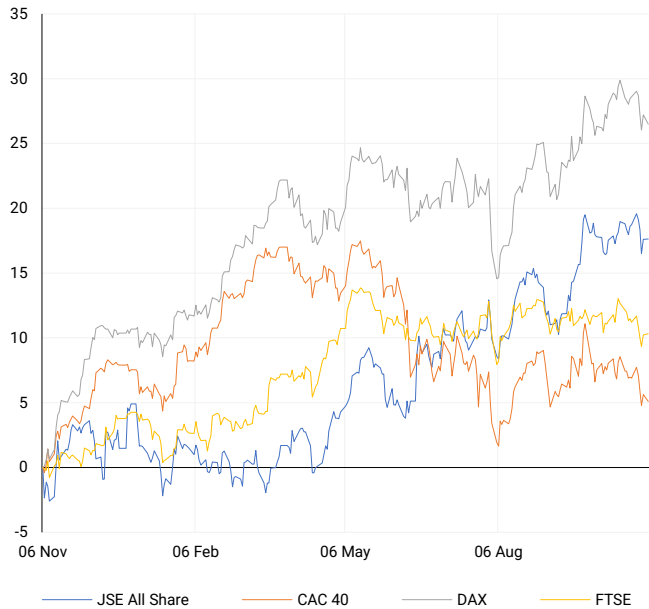


GLOBAL INTEREST RATES | SELECTED ITEMS

REGION	DATE CHANGED	CURRENT RATE
United States	Sep '24	4.75%-5.00%
United Kingdom	Aug '24	5.00%
European	Oct '24	3.40%
SA Repo Rate	Sep '24	8.00%
SA Prime Rate	Sep '24	11.50%

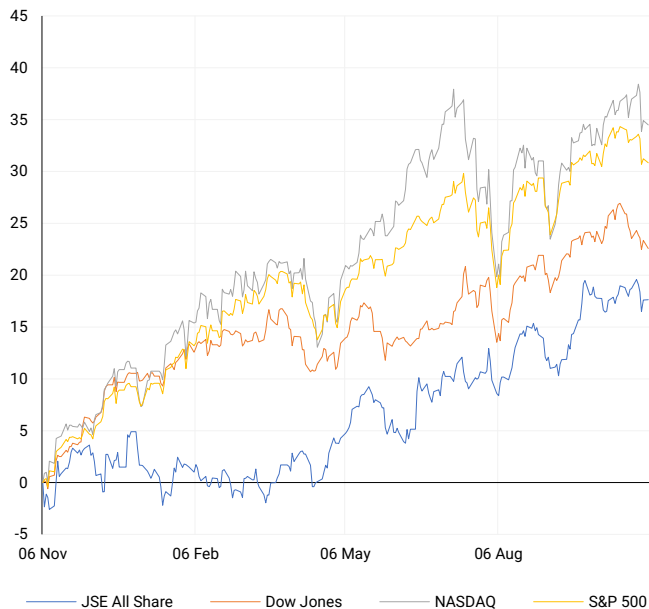
EUROPEAN INDICES

Normalised percentage performances



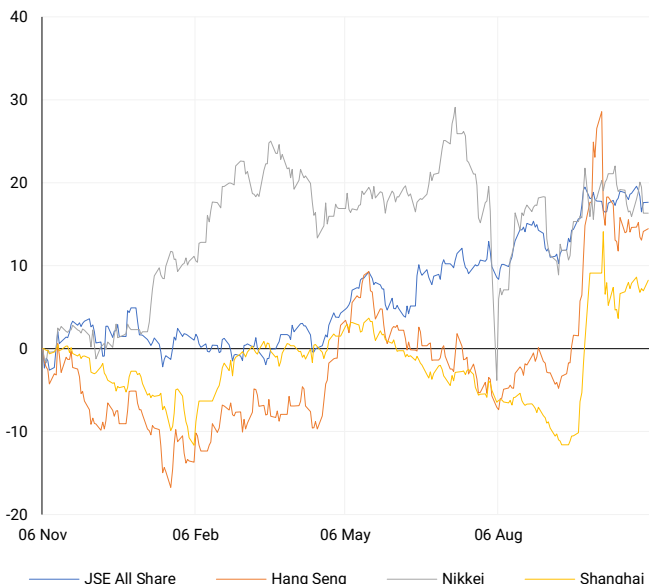
AMERICAN INDICES

Normalised percentage performances



ASIAN INDICES

Normalised percentage performances

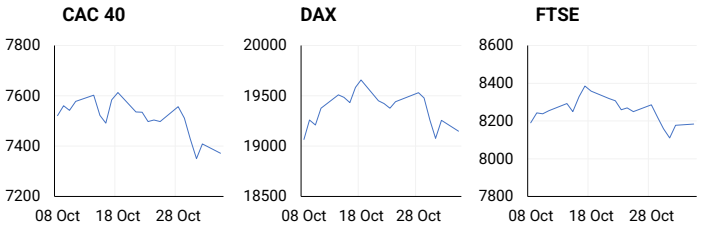


EUROPEAN MARKET SUMMARY

SELECTED ITEMS

European shares declined on Monday as technology stock losses outweighed gains in banking and oil shares. The Bank of England is anticipated to cut its policy rate by 25 basis points this week, with rate decisions also expected from Norway and Sweden. Meanwhile, euro zone manufacturing showed hints of stabilizing in October, contracting for the 28th consecutive month but at a slower rate.

EUROPEAN INDICES	CLOSE	PREVIOUS	1D%	5D%	1M%	YTD%
CAC 40	7371.71	7409.11	-0.50	-2.45	-2.25	-2.27
DAX 30	19147.76	19254.97	-0.56	-1.97	0.14	14.30
Eurostoxx 50	4868.50	4878.05	-0.20	-1.63	-1.74	7.67
FTSE	8184.24	8177.15	0.09	-1.22	-1.16	5.83



AMERICAN MARKET SUMMARY

SELECTED ITEMS

U.S. stocks ended slightly lower after a volatile session on Monday as investors geared up for a critical week with the presidential election and a Federal Reserve policy announcement. Presidential candidates Donald Trump and Kamala Harris made last-minute pushes in a tight race that may take days to declare a winner. Markets largely anticipate a 25 basis-point interest rate cut by the Fed on Thursday, with CME's FedWatch Tool indicating a 98% probability of the cut.

AMERICAN INDICES	CLOSE	PREVIOUS	1D%	5D%	1M%	YTD%
Dow Jones	41794.60	42052.19	-0.61	-1.40	-1.32	10.89
Nasdaq	18179.98	18239.92	-0.33	-2.09	0.23	21.11
S&P 500	5712.69	5728.80	-0.28	-1.90	-0.67	19.77
US VIX	21.98	21.88	0.46	11.01	14.42	76.55



ASIAN MARKET SUMMARY

SELECTED ITEMS

Asia-Pacific markets were mixed this morning. Japan's consumer inflation rose by 1.3% in October, slightly below expectations. In China, the services sector expanded at its fastest rate in three months, with the Caixin/S&P Global services PMI climbing to 52.0 in October, driven by business activity growth and optimism. South Korea's inflation also rose by 1.3% in October, marking its slowest increase since early 2021 and easing for the third consecutive month. Last month, the Bank of Korea cut its interest rate to 3.25% after nearly two years of holding steady, with its next meeting set for November 28.

ASIAN INDICES	CLOSE	PREVIOUS	1D%	5D%	1M%	YTD%
Hang Seng	20567.52	20506.43	0.30	-0.15	-9.54	20.65
Nikkei 225	38053.67	38053.67	0.00	-1.43	-1.51	13.71
Shanghai	3310.21	3272.01	1.17	-0.36	-0.79	11.27



COMMODITIES MARKET SUMMARY

SELECTED ITEMS

Gold traded within a narrow range this morning, with investors cautious ahead of the U.S. presidential election and the Federal Reserve policy meeting later this week. Oil prices dipped slightly after a recent 2% rise, as markets awaited election outcomes. The recent oil price increase was supported by OPEC+'s decision to delay its planned production hike in December, helping to ease supply concerns.

COMMODITY	LAST	CLOSE	% CHG	1D%	5D%	YTD%
Brent Crude	75.18	75.33	-0.20	3.32	4.55	-2.27
Gold	2735.19	2736.62	-0.05	0.01	-0.21	32.65
Palladium	1083.63	1077.50	0.57	-2.51	-11.19	-1.80
Platinum	986.30	985.20	0.11	-1.02	-4.77	-0.21
Silver	32.48	32.46	0.06	0.03	-3.59	36.46

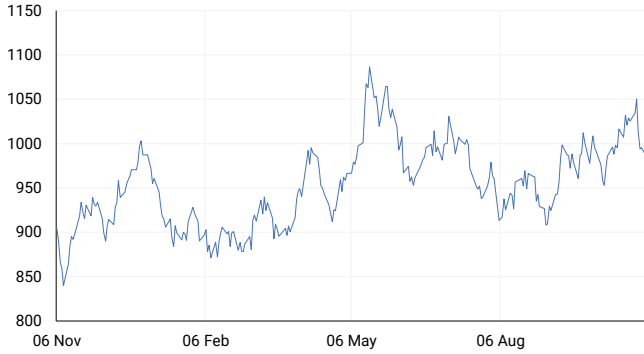
BRENT CRUDE

One-year



PLATINUM

One-year



GOLD

One-year



CURRENCY MARKET SUMMARY

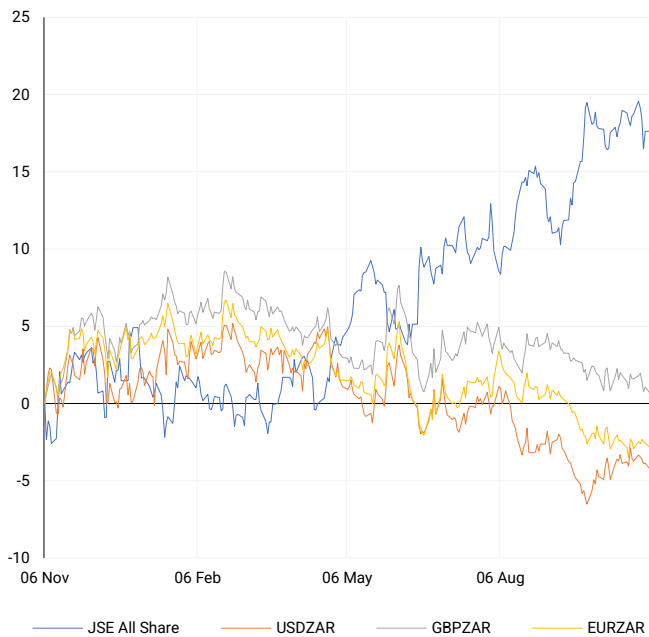
SELECTED ITEMS

South Africa's rand strengthened on Monday, benefiting from a weaker dollar as investors awaited the U.S. presidential election and the Federal Reserve's rate announcement. This morning, the dollar remained on the defensive, with traders adjusting their positions as U.S. election day began, following polls that softened some market expectations of a win for Republican candidate Donald Trump.

CURRENCY PAIR	LAST	CLOSE	% CHG	1D%	5D%	YTD%
USDZAR	17.51	17.53	-0.07	-0.43	-0.98	-4.35
GBPZAR	22.69	22.70	-0.02	-0.43	-1.14	-2.57
EURZAR	19.05	19.05	-0.05	-0.32	-0.43	-5.62
AUDZAR	11.55	11.54	0.09	-0.85	-0.97	-7.36
EURUSD	1.09	1.09	-0.02	-0.03	0.60	-1.45
USDJPY	152.47	152.14	0.22	-0.07	-0.75	7.87
GBPUSD	1.30	1.30	-0.01	-0.11	-0.13	1.76
USDCHF	0.86	0.86	0.02	-0.36	-0.09	2.70

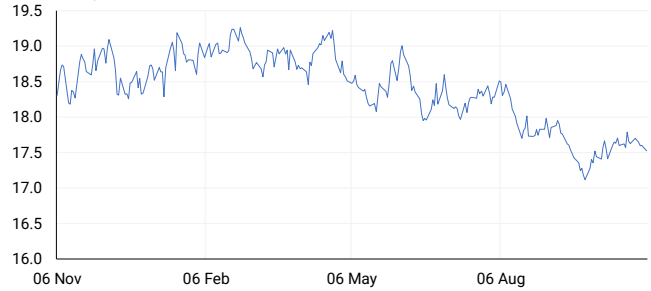
CURRENCY PAIRS vs JSE ALL SHARE

Normalised percentage performances



USDZAR

One-year



EURUSD

One-year



SOURCES | JSE, IRESS, MONEYWEB, CNBC, BBC, CNN

Disclaimer: This note is prepared for Sanlam Private Wealth (Pty) Ltd, by K2013143132 (Pty) Ltd trading as ThompsonGreen. ThompsonGreen is an independent company contracted to Sanlam Private Wealth (Pty) Ltd. The views expressed in this note are those of ThompsonGreen and/or its analysts and not necessarily the views of Sanlam Private Wealth (Pty) Ltd, Sanlam or any officer or agent thereof. K2013143132 (Pty) Ltd trading as ThompsonGreen is a research house and not a registered broker, financial adviser or financial service provider. Our editors and customer services teams also do not give personal investment advice. The information in this document is general advice only and may not be appropriate to your particular investment objectives, financial situation or particular needs. Before investing, or if you are in any doubt about your personal situation, you should seek professional advice from a stockbroker or independent financial adviser authorised by the Financial Sector Conduct Authority.