

GLOBAL OVERVIEW | SELECTED INDICES

SOUTH AFRICAN INDICES						
	CLOSE	PREVIOUS	1D%	5D%	1M%	YTD%
All Share	86642.86	86223.60	0.49	-0.75	0.36	12.68
Top 40	78497.60	78052.33	0.57	-0.80	0.27	11.35
Financial 15	21299.25	21204.36	0.45	2.23	1.85	19.17
Industrial 25	117396.48	117116.83	0.24	-1.20	-1.68	13.19
Resource 10	60098.23	59340.94	1.28	-4.13	2.17	4.46
Mid Cap	93145.02	92542.58	0.65	-1.00	2.14	15.83
Small Cap	88374.71	88618.72	-0.28	-0.79	0.29	21.91
Banks	13256.32	13180.14	0.58	3.15	1.99	21.08
Retailers	7785.80	7903.97	-1.50	-0.81	0.17	24.90
Property (J253) - TR	2353.73	2381.69	-1.17	-1.90	-1.09	26.29

AMERICAN INDICES						
	CLOSE	PREVIOUS	1D%	5D%	1M%	YTD%
Dow Jones	42221.88	41794.60	1.02	-0.03	-0.31	12.03
Nasdaq	18439.17	18179.98	1.43	-1.46	1.66	22.83
S&P 500	5782.76	5712.69	1.23	-0.86	0.55	21.24
US VIX	20.49	21.98	-6.78	5.95	6.66	64.58

EUROPEAN INDICES						
	CLOSE	PREVIOUS	1D%	5D%	1M%	YTD%
CAC 40	7407.15	7371.71	0.48	-1.38	-1.78	-1.80
DAX 30	19256.27	19147.76	0.57	-1.14	0.71	14.95
Eurostoxx 50	4854.10	4868.50	-0.30	-2.16	-2.04	7.35
FTSE	8172.39	8184.24	-0.14	-0.57	-1.31	5.68

ASIAN INDICES						
	CLOSE	PREVIOUS	1D%	5D%	1M%	YTD%
Hang Seng	21006.97	20567.52	2.14	1.48	-7.61	23.23
Nikkei 225	38474.90	38053.67	1.11	-1.10	-0.42	14.97
Shanghai	3386.99	3310.21	2.32	3.06	1.51	13.85

EARLY MORNING MARKETS						
	LAST	CLOSE	% CHG	1D%	5D%	YTD%
TENCENT	418.00	427.80	-2.29	2.10	2.25	47.42
BHP AUS	4224.00	4263.00	-0.91	0.07	-0.95	-10.82

NOTE: 5D% and 1M% are rolling percentage moves

INTERNATIONAL ECONOMIC CALENDAR | SELECTED EVENTS

TIME	AREA	TODAY'S EVENTS & RELEASES	PERIOD	EXP.	PREV.
11:30	GB	S&P Global Construction PMI	Oct	55.5	57.2
16:00	EA	ECB President Lagarde Speech	--	--	--
17:30	US	Crude Oil Inventories	Oct	1.2M	-0.5M
--	--	--	--	--	--
--	--	--	--	--	--

TIME	AREA	PREVIOUS SESSION'S RELEASES	PERIOD	EXP.	ACT.
09:15	ZA	S&P Global PMI	Oct	50.8	50.6
17:00	US	ISM Services PMI	Oct	54.8	56.0
--	US	Presidential Election	--	--	--
--	US	Congressional Elections	--	--	--
--	--	--	--	--	--

JSE ALL SHARE | BEST AND WORST ONE-DAY PERFORMERS

BEST ONE-DAY % PERFORMERS					
	CODE	CLOSE	1D%	5D%	YTD%
Sibanye Stillwater Ltd	SSW	2236	10.15	-3.16	-10.20
Altron Limited A	AEL	1975	5.61	6.24	92.68
Kumba Iron Ore Ltd	KIO	35682	3.28	0.54	-41.96
Anglo American Plat Ltd	AMS	71179	3.21	-8.45	-26.16
Montauk Renewables Inc	MKR	10111	3.17	-2.78	-41.22
Impala Platinum Hlgs Ltd	IMP	12210	3.12	-4.18	33.78

WORST ONE-DAY % PERFORMERS					
	CODE	CLOSE	1D%	5D%	YTD%
Fairvest Limited B	FTB	457	-3.18	-4.79	32.85
Emira Property Fund Ltd	EMI	1120	-2.95	-2.52	30.99
Attacq Limited	ATT	1309	-2.75	-2.09	41.97
PPC Limited	PPC	405	-2.64	4.92	1.50
Hyprop Inv Ltd	HYP	4097	-2.64	-1.13	31.69

DIVIDEND DATA

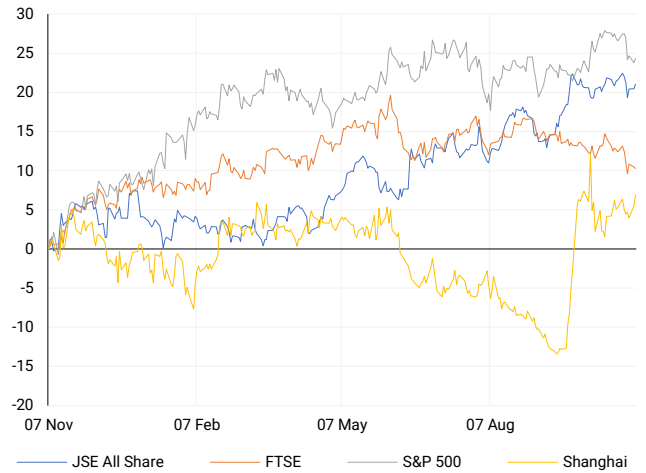
COMPANY	CODE	EXPECTED DIVIDEND	COMPANY	CODE	EXPECTED DIVIDEND
PSG Financial Services	KST	17 ZARc	--	--	--
Bytes Technology	BYI	3.1 GBPP	--	--	--
--	--	--	--	--	--
--	--	--	--	--	--
--	--	--	--	--	--

SOURCES | JSE, IRESS, MONEYWEB, CNBC, BBC, CNN

PLEASE SEE THE BOTTOM OF THE LAST PAGE FOR THE FULL DISCLAIMER

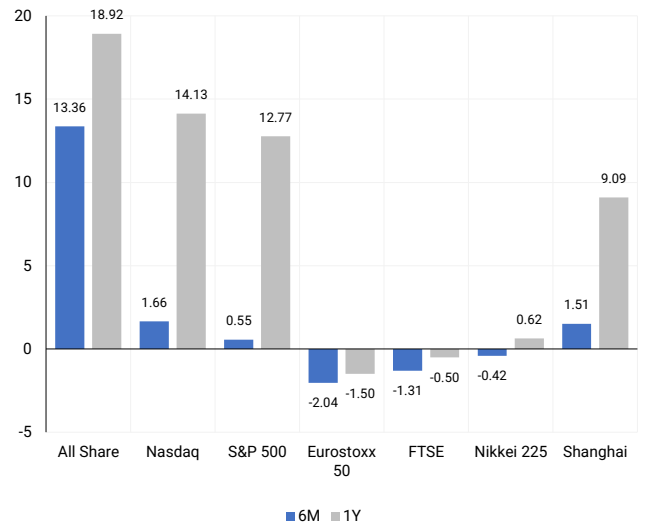
INTERNATIONAL INDICES

Normalised percentage performances - In rand terms



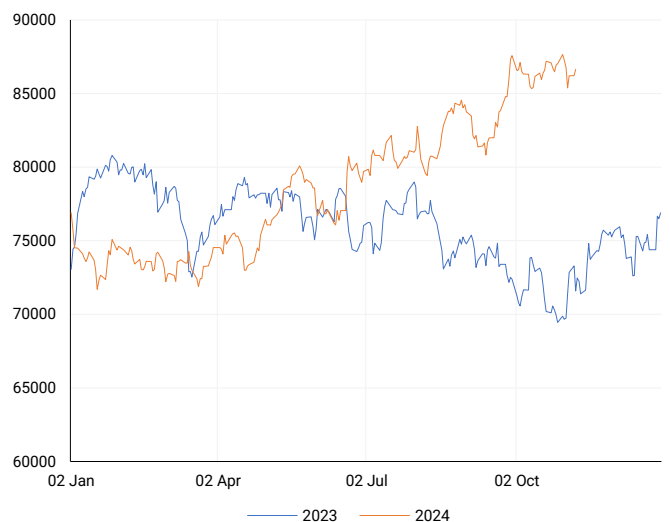
INTERNATIONAL INDICES

6-month & 1-year percentage performances



JSE ALL SHARE INDEX

2023 v 2024 to date



Ex Div Wed, 06 November

## LOCAL EQUITIES | JSE LARGE CAP COMPANIES (Cents Per Share)

COMPANY	CLOSE	PREVIOUS	1D%	5D%	1M%	YTD%
Absa Group Limited	17151	17011	0.82	1.84	1.22	4.76
Anglo American plc	54980	55225	-0.44	-3.77	-0.58	16.12
Anglo American Plat Ltd	71179	68967	3.21	-8.45	6.61	-26.16
Anglogold Ashanti Ltd	48111	48073	0.08	-6.55	4.13	36.13
Anheuser-Busch InBev SA NV	103157	104090	-0.90	-9.49	-10.54	-14.05
BHP Group Limited	49358	49352	0.01	-2.93	-6.96	-22.08
BID Corporation Ltd	42626	42021	1.44	-0.17	-3.50	-0.09
British American Tob plc	61462	61600	-0.22	0.38	0.23	13.50
Compagnie Fin Richemont	250056	253672	-1.43	-4.39	-6.50	-2.61
Capitec Bank Hldgs Ltd	330800	325000	1.78	5.58	7.38	63.25
Discovery Ltd	18431	18218	1.17	2.61	8.25	28.28
Firststrand Ltd	7736	7741	-0.06	1.42	-5.25	5.24
Gold Fields Ltd	28998	28540	1.60	-5.64	5.89	4.39
Glencore plc	9199	9306	-1.15	-1.46	-7.23	-17.61
Impala Platinum Hlgs Ltd	12210	11841	3.12	-4.18	14.29	33.78
Kumba Iron Ore Ltd	35682	34550	3.28	0.54	-6.60	-41.96
Mondi plc	28379	28526	-0.52	-2.65	-12.51	-21.82
MTN Group Ltd	8684	8868	-2.07	0.08	1.16	-24.81
Naspers Ltd -N-	423446	418000	1.30	-1.56	-2.23	35.37
Prosus N.V.	75493	74978	0.69	-1.74	-3.69	34.72
South32 Limited	4304	4295	0.21	-0.88	-1.08	2.01
Standard Bank Group Ltd	24962	24827	0.54	4.23	5.16	19.95
Shoprite Holdings Ltd	30946	30325	2.05	1.29	6.71	12.51
Sanlam Limited	8906	8883	0.26	-0.13	2.46	22.34
Sasol Limited	10589	10494	0.91	3.76	-16.39	-42.85
Sibanye Stillwater Ltd	2236	2030	10.15	-3.16	9.93	-10.20
Vodacom Group Ltd	10830	11015	-1.68	-2.49	3.03	2.17

## SOUTH AFRICAN MARKET SUMMARY

### SELECTED ITEMS

On Tuesday, the Top 40 index rose by 0.57%, reaching 78,498, while the All Share index gained 0.49%, closing at 86,643. South Africa's private sector continued its growth path in October, supported by lower business costs and selling prices, as reported by the latest Purchasing Managers' Index (PMI) survey. The S&P Global South Africa PMI came in at 50.6, a slight decrease from September's 51.0 but remaining above the 50.0 threshold that signals expansion. Additionally, South Africa and Britain have agreed to strengthen trade and defence ties, following a meeting between the two countries' foreign ministers on Tuesday.

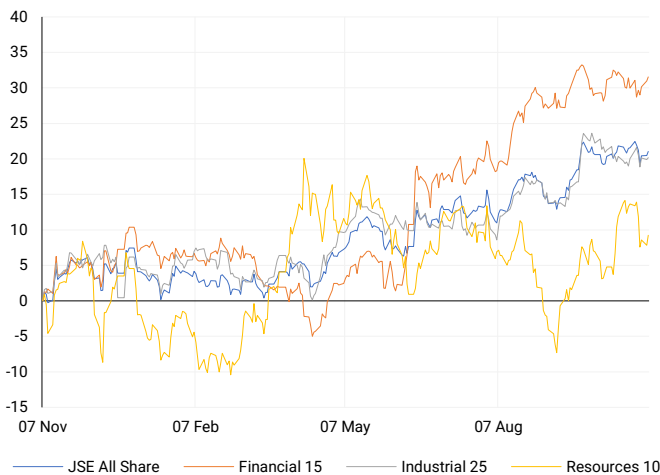
### JSE ALL SHARE

One-year



### LOCAL INDICES

Normalised percentage performances



### LOCAL SENS ANNOUNCEMENTS

#### SELECTED RELEASE

##### SIBANYE STILLWATER LIMITED – Operating update

For the quarter ending September 30, 2024, the company reported a 9% year-on-year increase in adjusted EBITDA to R3.3 billion (US\$184 million), along with improved safety metrics and a strong balance sheet. Key highlights included a significant boost in the South African (SA) gold operations, which saw adjusted EBITDA surge by 292% to R1.35 billion (US\$75 million) due to higher gold prices. SA platinum group metal (PGM) operations also increased production by 5%, maintaining stable costs and contributing R1.6 billion (US\$88 million) in adjusted EBITDA. In the U.S., PGM operations are projected to benefit from tax amendments, adding an estimated US\$140 million for 2023 and US\$100 million for 2024. Zinc production at the Century operation rose by 9%, driving a 96% jump in adjusted EBITDA to US\$31 million (R565 million). Additionally, the company secured a €500 million green financing loan for its Keliber lithium project.

SSW |10.15% OPEN | 1989c HIGH | 2250c LOW | 1979c CLOSE | 2236c TIME | 08:00

##### MURRAY & ROBERTS HOLDINGS LIMITED – Trading Statement

Shareholders are advised that earnings per share and headline earnings per share for the six-month period ending December 31, 2024, are expected to drop by at least 20% compared to the same period last year. This anticipated decrease reflects factors outlined in the recent business update. Although an exact range cannot yet be provided, shareholders will be kept informed as soon as there's enough certainty to offer a clearer update.

MUR |22.17% OPEN | 222c HIGH | 251c LOW | 173c CLOSE | 179c TIME | 14:15

### EXPECTED COMPANY REPORTING SCHEDULE

COMPANY	CODE	RELEASE	DATE
Sappi	SAP	Final	8 Nov '24
TFG	TFG	Interim	8 Nov '24
Clientele	CLI	Final	13 Nov '24
Vodacom	VOD	Interim	14 Nov '24
Reinet	RNI	Interim	15 Nov '24

### BANK AND OTHER SELECTE PREFERENCE SHARES

COMPANY	CODE	CLOSE	CLEAN YIELD	NEXT LDT (Est.)
Investec Limited	INPR	9320	11.24	Thu, 28 Nov '24
Standard Bank	SBPP	9249	11.15	Wed, 02 Apr '25
Absa	ABSP	84799	11.48	Wed, 16 Apr '25
Capitec	CPIP	10200	9.69	Tue, 18 Mar '25
Grindrod	GNDP	9360	12.22	Wed, 02 Apr '25
Netcare	NTCP	8700	11.82	Thu, 31 Oct '24
Discovery	DSBP	10022	11.91	Tue, 18 Mar '25

**LOCAL EQUITIES | JSE MID CAP COMPANIES** (Cents Per Share)

COMPANY	CODE	CLOSE	PREVIOUS	1D%	1M%	YTD%
Aspen Pharmacare Hldgs Ltd	APN	18115	18085	0.17	-5.65	-10.98
African Rainbow Min Ltd	ARI	18005	17897	0.60	-4.94	-9.98
AVI Ltd	AVI	11199	10980	1.99	3.06	36.46
Barloworld Ltd	BAW	8238	8345	-1.28	-3.53	4.28
Bidvest Ltd	BVT	28833	28600	0.81	1.84	14.29
Bytes Technology Grp PLC	BYI	10368	10394	-0.25	-10.51	-27.60
Capital&Counties Prop plc	CCO	3039	3084	-1.46	-8.19	-6.49
Clicks Group Ltd	CLS	38295	37754	1.43	1.68	17.57
Dis-Chem Pharmacies Ltd	DCP	3801	3770	0.82	1.28	23.85
Exxaro Resources Ltd	EXX	16654	16433	1.34	0.70	-18.55
Fortress Real Est INV B	FFB	1883	1924	-2.13	-6.87	31.13
Growthpoint Prop Ltd	GRT	1296	1322	-1.97	-6.09	10.96
Harmony GM Co Ltd	HAR	18994	18662	1.78	10.67	58.83
Hammerson plc	HMN	6775	6809	-0.50	-4.31	896.32
Investec Ltd	INL	13809	13766	0.31	6.92	9.95
Investec plc	INP	13899	13832	0.48	7.20	10.35
Italtile Ltd	ITE	1365	1375	-0.73	5.81	21.88
Life Healthc Grp Hldgs Ltd	LHC	1644	1650	-0.36	-3.35	-10.51
MultiChoice Group Ltd	MCG	11200	11180	0.18	1.78	38.24
Montauk Renewables Inc	MKR	10111	9800	3.17	6.43	-41.22
Mr Price Group Ltd	MRP	25922	26290	-1.40	-1.77	65.31
Momentum Met Hldgs Ltd	MTM	2956	2930	0.89	0.51	35.04
Ninety One Plc	N91	3771	3787	-0.42	-10.21	-12.55
Nedbank Group Ltd	NED	30277	30303	-0.09	4.07	40.02
Northam Platinum Hldgs Ltd	NPH	13499	13160	2.58	14.63	-3.87
NEPI Rockcastle N.V.	NRP	14040	14064	-0.17	-0.67	11.09
Netcare Limited	NTC	1500	1508	-0.53	-3.66	5.34
Ninety One Limited	NY1	3790	3800	-0.26	-10.82	-11.80
Old Mutual Limited	OMU	1294	1265	2.29	-2.19	-0.92
OUTsurance Group Ltd	OUT	6213	6156	0.93	4.84	47.23
Pick n Pay Stores Ltd	PIK	2550	2606	-2.15	-12.25	9.58
Pepkor Holdings Ltd	PPH	2254	2306	-2.25	-5.29	14.82
Quilter Plc	QLT	3285	3319	-1.02	6.83	35.30
Redefine Properties Ltd	RDF	489	497	-1.61	-1.81	27.01
Remgro Ltd	REM	15218	15412	-1.26	-2.77	-6.34
Resilient REIT Limited	RES	5661	5669	-0.14	-0.46	27.82
Reinet Investments S.C.A	RNI	48554	48246	0.64	5.95	4.15
Sappi Ltd	SAP	4964	5026	-1.23	0.24	12.31
Santam Limited	SNT	37177	36642	1.46	2.13	29.73
The Spar Group Ltd	SPP	12974	12890	0.65	-1.56	10.04
Sirius Real Estate Ltd	SRE	2013	2018	-0.25	-6.28	-9.12
Tiger Brands Ltd	TBS	24215	24180	0.14	0.48	20.30
Transaction Capital Ltd	TCP	291	291	0.00	-7.62	-63.53
The Foschini Group Limited	TFG	15402	15553	-0.97	2.85	38.81
Thungela Resources Ltd	TGA	12713	12636	0.61	3.64	-17.34
Telkom SA SOC Ltd	TKG	2657	2719	-2.28	-1.34	-10.66
Truworths Int Ltd	TRU	11077	11212	-1.20	8.07	48.98
Woolworths Holdings Ltd	WHL	6400	6570	-2.59	-3.47	-11.36
Zeda Limited	ZZD	1445	1444	0.07	2.12	13.33

**LOCAL EQUITIES | JSE SMALL CAP COMPANIES** (Cents Per Share)

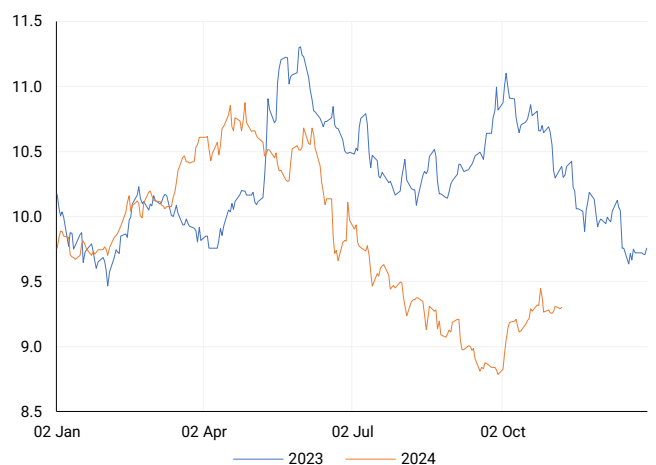
COMPANY	CODE	CLOSE	PREVIOUS	1D%	1M%	YTD%
ArcelorMittal SA Limited	ACL	131	135	-2.96	-10.88	-20.12
AdvTECH Ltd	ADH	3199	3185	0.44	1.78	30.36
Altron Limited A	AEL	1975	1870	5.61	12.73	92.68
AECI Limited	AFE	9960	9870	0.91	-1.87	-9.20
Alexander Forbes Grp Hldgs	AFH	735	740	-0.68	2.94	11.36
Afrimat Limited	AFT	6680	6671	0.13	-1.21	6.03
African Rainbow Cap Inv	AIL	750	750	0.00	2.04	53.37
Adcock Ingram Hldgs Ltd	AIP	7158	6960	2.84	1.89	19.10
Astral Foods Ltd	ARL	17145	17190	-0.26	-5.12	16.97
Attacq Limited	ATT	1309	1346	-2.75	7.65	41.97
Brait PLC	BAT	160	164	-2.44	5.96	-12.09
Blue Label Telecoms Ltd	BLU	557	552	0.91	10.30	43.56
Burstone Group	BTN	942	951	-0.95	-1.46	17.75
Coronation Fund Mngrs Ld	CML	3983	3990	-0.18	4.54	27.82
Curro Holdings Limited	COH	1309	1310	-0.08	-0.08	12.36
Cashbuild Ltd	CSB	18150	18105	0.25	8.30	8.73
DRD Gold Ltd	DRD	2075	2071	0.19	20.64	31.58
Dataotec Ltd	DTC	3953	3994	-1.03	8.93	-2.40
Emira Property Fund Ltd	EMI	1120	1154	-2.95	4.67	30.99
Equites Prop Fund Ltd	EQU	1407	1416	-0.64	-1.26	0.86
Famous Brands Ltd	FBR	6296	6336	-0.63	0.21	8.68
Fairvest Limited B	FTB	457	472	-3.18	1.11	32.85
Grindrod Ltd	GND	1430	1415	1.06	-6.35	24.78
Hosken Cons Inv Ltd	HCI	19995	19700	1.50	13.69	-1.31
Hudaco Industries Ltd	HDC	20440	20350	0.44	7.58	27.25
Hyprop Inv Ltd	HYP	4097	4208	-2.64	-7.93	31.69
JSE Ltd	JSE	12625	12600	0.20	0.36	36.58
KAP Industrial Hldgs Ltd	KAP	333	332	0.30	-2.35	27.10
Karooooo Ltd	KRO	70100	71000	-1.27	4.01	47.58
PSG Konsult Limited	KST	1876	1862	0.75	2.85	22.21
Libstar Holdings Ltd	LBR	425	436	-2.52	1.67	21.43
Lighthouse Properties plc	LTE	785	783	0.26	-1.26	6.80
Industrials REIT Limited	MLI	25	25	0.00	56.25	3471.43
MAS P.L.C	MSP	1830	1853	-1.24	2.58	5.72
Metair Investments Ltd	MTA	1121	1142	-1.84	-11.10	-36.85
Motus Holdings Ltd	MTH	11839	11800	0.33	2.52	16.64
Murray & Roberts Hldgs	MUR	179	230	-22.17	-34.19	20.13
Oceana Group Ltd	OCE	6901	6900	0.01	0.41	-2.35
Omnia Holdings Ltd	OMN	6647	6613	0.51	2.39	1.68
Pan African Resource plc	PAN	808	810	-0.25	2.80	97.56
PPC Limited	PPC	405	416	-2.64	4.11	1.50
Raubex Group Ltd	RBX	4699	4700	-0.02	-9.23	69.52
RFG Holdings Limited	RFG	1636	1635	0.06	-4.10	21.19
Reunert Ltd	RLO	8101	8025	0.95	0.57	35.15
SA Corp Real Estate Ltd	SAC	279	282	-1.06	-6.69	20.26
Super Group Ltd	SPG	2234	2193	1.87	-4.04	-24.91
Stor-Age Prop REIT Ltd	SSS	1519	1527	-0.52	-0.85	16.31
Southern Sun LTD	SSU	834	843	-1.07	3.60	58.86
Sun International Ltd	SUI	4516	4500	0.36	0.29	10.15
Tharisa plc	THA	1700	1698	0.12	-4.76	12.51
Tsogo Sun Gaming Ltd	TSG	1242	1237	0.40	0.24	1.39
Vukile Property Fund Ltd	VKE	1806	1831	-1.37	-2.38	27.90
Wilson Bayly Hlm-Ovc Ltd	WBO	21213	21067	0.69	-2.69	63.10

**10-YEAR BOND YIELD | SELECTED ITEMS** (Basis Point Change)

REGION	YIELD	1D	1M	1Y
United States	4.42%	13	46	-
United Kingdom	4.53%	7	40	24
Germany	2.42%	3	22	-22
Japan	0.93%	0	6	-
South African 10Y	9.30%	1	9	-110

**SOUTH AFRICAN 10-YEAR**

2023 vs 2024 to date

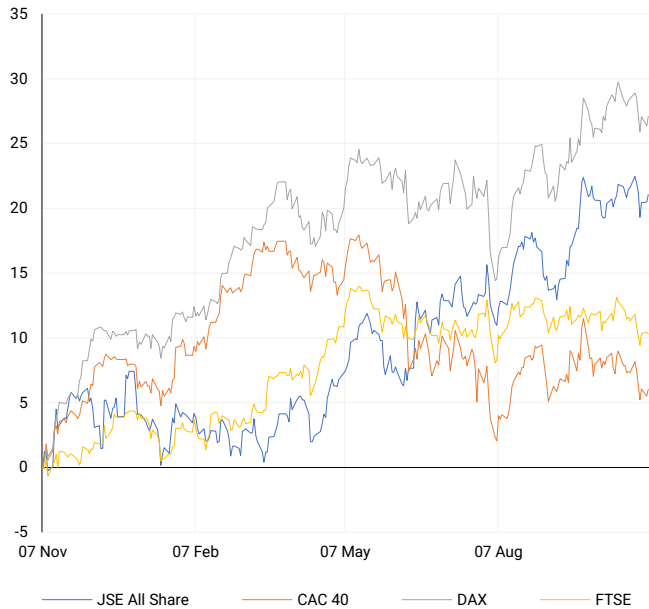


**GLOBAL INTEREST RATES | SELECTED ITEMS**

REGION	DATE CHANGED	CURRENT RATE
United States	Sep '24	4.75%-5.00%
United Kingdom	Aug '24	5.00%
European	Oct '24	3.40%
SA Repo Rate	Sep '24	8.00%
SA Prime Rate	Sep '24	11.50%

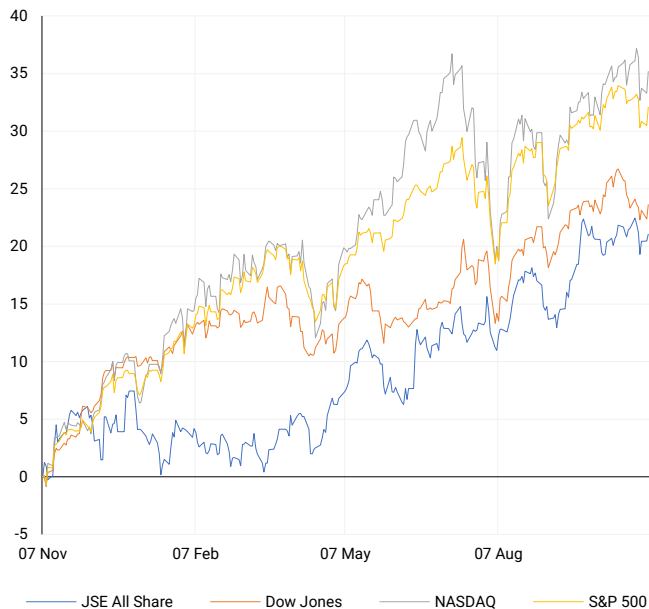
## EUROPEAN INDICES

Normalised percentage performances



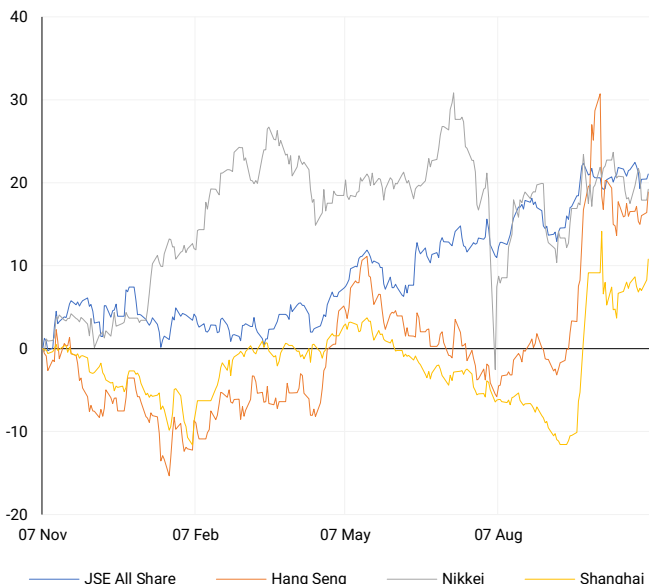
## AMERICAN INDICES

Normalised percentage performances



## ASIAN INDICES

Normalised percentage performances

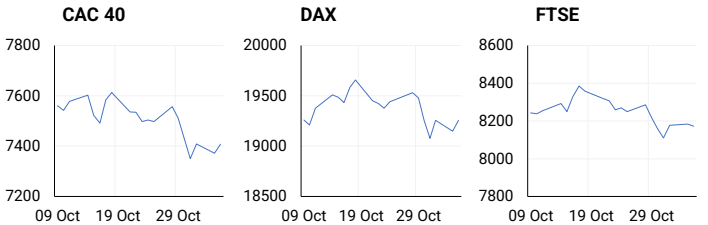


## EUROPEAN MARKET SUMMARY

### SELECTED ITEMS

European markets were largely steady as trading opened on Tuesday. In the UK, the FTSE 100 dipped slightly, impacted by a decline in AstraZeneca's shares amid investor caution surrounding U.S. Election Day. AstraZeneca saw its shares fall by 8.4%—the largest single-day drop since March 2020—after reports suggested that senior executives from its China unit might be implicated in a significant insurance fraud case, potentially the largest in China's pharma sector in recent years.

EUROPEAN INDICES	CLOSE	PREVIOUS	1D%	5D%	1M%	YTD%
CAC 40	7407.15	7371.71	0.48	-1.38	-1.78	-1.80
DAX 30	19256.27	19147.76	0.57	-1.14	0.71	14.95
Eurostoxx 50	4854.10	4868.50	-0.30	-2.16	-2.04	7.35
FTSE	8172.39	8184.24	-0.14	-0.57	-1.31	5.68



## AMERICAN MARKET SUMMARY

### SELECTED ITEMS

U.S. stocks rose sharply on Tuesday as economic data pointed to a strong economy, with a key services sector index reaching its highest level since August 2022. Investors, however, prepared for potential market swings as the U.S. presidential election remained tightly contested between Republican Donald Trump and Democrat Kamala Harris, with the final outcome potentially taking days to determine. Betting markets, often seen as election indicators, showed improved odds for Trump. Meanwhile, the trade deficit hit a 2.5-year high as businesses increased imports, possibly to avoid future tariffs under a Trump administration.

AMERICAN INDICES	CLOSE	PREVIOUS	1D%	5D%	1M%	YTD%
Dow Jones	42221.88	41794.60	1.02	-0.03	-0.31	12.03
Nasdaq	18439.17	18179.98	1.43	-1.46	1.66	22.83
S&P 500	5782.76	5712.69	1.23	-0.86	0.55	21.24
US VIX	20.49	21.98	-6.78	5.95	6.66	64.58



## ASIAN MARKET SUMMARY

### SELECTED ITEMS

Asia-Pacific markets mostly rose this morning as investors reacted to recent economic updates. Minutes from the Bank of Japan's September meeting revealed agreement among members on raising interest rates if economic and price growth aligned with targets. Meanwhile, China's National People's Congress continued its five-day session, with investors watching for announcements on economic stimulus and stability measures. On Tuesday, the head of the People's Bank of China stated that supportive monetary policies would remain in place, according to state media.

ASIAN INDICES	CLOSE	PREVIOUS	1D%	5D%	1M%	YTD%
Hang Seng	21006.97	20567.52	2.14	1.48	-7.61	23.23
Nikkei 225	38474.90	38053.67	1.11	-1.10	-0.42	14.97
Shanghai	3386.99	3310.21	2.32	3.06	1.51	13.85



## COMMODITIES MARKET SUMMARY

### SELECTED ITEMS

Gold prices remained stable this morning as investors awaited results from the closely contested U.S. presidential race. Meanwhile, oil prices dropped as early election results showed a tight race between Democrat Kamala Harris and Republican Donald Trump.

COMMODITY	LAST	CLOSE	% CHG	1D%	5D%	YTD%
Brent Crude	74.74	75.48	-0.98	0.20	5.64	-2.08
Gold	2740.31	2744.02	-0.14	0.27	-1.11	33.01
Palladium	1058.50	1078.00	-1.81	0.05	-11.00	-1.76
Platinum	988.70	1000.51	-1.18	1.55	-4.75	1.34
Silver	32.27	32.66	-1.19	0.62	-5.22	37.30

## BRENT CRUDE

One-year



## PLATINUM

One-year



## GOLD

One-year



## CURRENCY MARKET SUMMARY

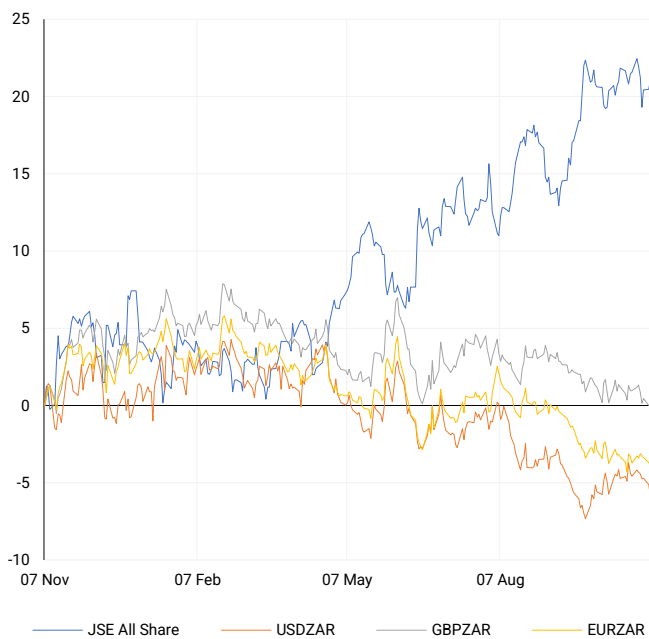
### SELECTED ITEMS

South Africa's rand rose slightly on Tuesday, supported by a local purchasing managers' index report, while the U.S. election drew global attention. This morning, the dollar strengthened, and bitcoin surged as investors leaned back into "Trump trades" amid early results from the close presidential race.

CURRENCY PAIR	LAST	CLOSE	% CHG	1D%	5D%	YTD%
USDZAR	17.64	17.39	1.42	-0.76	-1.59	-5.08
GBPZAR	22.80	22.69	0.47	-0.02	-1.32	-2.59
EURZAR	19.03	19.01	0.10	-0.21	-0.50	-5.83
AUDZAR	11.55	11.55	0.01	0.10	-0.33	-7.27
EURUSD	1.08	1.09	-1.42	0.48	1.03	-0.98
USDJPY	153.68	151.62	1.36	-0.34	-1.14	7.50
GBPUSD	1.29	1.30	-1.04	0.66	0.21	2.44
USDCHF	0.87	0.86	1.06	-0.12	-0.47	2.58

## CURRENCY PAIRS vs JSE ALL SHARE

Normalised percentage performances



## USDZAR

One-year



## EURUSD

One-year



SOURCES | JSE, IRESS, MONEYWEB, CNBC, BBC, CNN

**Disclaimer:** This note is prepared for Sanlam Private Wealth (Pty) Ltd, by K2013143132 (Pty) Ltd trading as ThompsonGreen. ThompsonGreen is an independent company contracted to Sanlam Private Wealth (Pty) Ltd. The views expressed in this note are those of ThompsonGreen and/or its analysts and not necessarily the views of Sanlam Private Wealth (Pty) Ltd, Sanlam or any officer or agent thereof. K2013143132 (Pty) Ltd trading as ThompsonGreen is a research house and not a registered broker, financial adviser or financial service provider. Our editors and customer services teams also do not give personal investment advice. The information in this document is general advice only and may not be appropriate to your particular investment objectives, financial situation or particular needs. Before investing, or if you are in any doubt about your personal situation, you should seek professional advice from a stockbroker or independent financial adviser authorised by the Financial Sector Conduct Authority.