

GLOBAL OVERVIEW | SELECTED INDICES

SOUTH AFRICAN INDICES						
	CLOSE	PREVIOUS	1D%	5D%	1M%	YTD%
All Share	85329.75	86642.86	-1.52	-1.65	-1.16	10.97
Top 40	77232.33	78497.60	-1.61	-1.80	-1.34	9.56
Financial 15	21090.42	21299.25	-0.98	0.45	0.85	18.00
Industrial 25	116384.66	117396.48	-0.86	-1.14	-2.53	12.21
Resource 10	57703.25	60098.23	-3.99	-6.23	-1.90	0.30
Mid Cap	91450.21	93145.02	-1.82	-1.93	0.28	13.72
Small Cap	87749.52	88374.71	-0.71	-1.00	-0.42	21.04
Banks	13119.55	13256.32	-1.03	0.91	0.94	19.83
Retailers	7732.86	7785.80	-0.68	-1.93	-0.51	24.05
Property (J253) - TR	2336.35	2353.73	-0.74	-2.01	-1.82	25.36

AMERICAN INDICES						
	CLOSE	PREVIOUS	1D%	5D%	1M%	YTD%
Dow Jones	43729.93	42221.88	3.57	3.77	3.25	16.03
Nasdaq	18983.46	18439.17	2.95	2.02	4.66	26.46
S&P 500	5929.04	5782.76	2.53	1.98	3.09	24.30
US VIX	16.27	20.49	-20.60	-20.05	-15.30	30.68

EUROPEAN INDICES						
	CLOSE	PREVIOUS	1D%	5D%	1M%	YTD%
CAC 40	7369.61	7407.15	-0.51	-0.79	-2.28	-2.30
DAX 30	19039.31	19256.27	-1.13	-1.13	-0.43	13.66
Eurostoxx 50	4845.80	4854.10	-0.17	-1.06	-2.20	7.17
FTSE	8166.68	8172.39	-0.07	0.09	-1.38	5.60

ASIAN INDICES						
	CLOSE	PREVIOUS	1D%	5D%	1M%	YTD%
Hang Seng	20538.38	21006.97	-2.23	0.77	-9.67	20.48
Nikkei 225	39480.67	38474.90	2.61	0.52	2.19	17.98
Shanghai	3383.81	3386.99	-0.09	3.60	1.42	13.74

EARLY MORNING MARKETS						
	LAST	CLOSE	% CHG	1D%	5D%	YTD%
TENCENT	422.40	419.80	0.62	-1.87	2.14	44.66
BHP AUS	4301.00	4260.00	0.96	-0.07	-1.18	-10.88

NOTE: 5D% and 1M% are rolling percentage moves

INTERNATIONAL ECONOMIC CALENDAR | SELECTED EVENTS

TIME	AREA	TODAY'S EVENTS & RELEASES	PERIOD	EXP.	PREV.
08:00	ZA	Foreign Exchange Reserves	Oct	\$64.0B	\$63.6B
14:00	GB	BoE Interest Rate Decision	--	4.8%	5.0%
14:00	GB	BoE Monetary Policy Report	--	1.2M	-0.5M
21:00	US	Fed Interest Rate Decision	--	4.8%	5.0%
21:00	US	Fed Press Conference	--	--	--

TIME	AREA	PREVIOUS SESSION'S RELEASES	PERIOD	EXP.	ACT.
11:30	GB	S&P Global Construction PMI	Oct	55.5	54.3
16:00	EA	ECB President Lagarde Speech	--	--	--
17:30	US	Crude Oil Inventories	Oct	1.2M	2.1M
--	--	--	--	--	--
--	--	--	--	--	--

JSE ALL SHARE | BEST AND WORST ONE-DAY PERFORMERS

BEST ONE-DAY % PERFORMERS						
	CODE	CLOSE	1D%	5D%	YTD%	
Karoo000 Ltd	KRO	72400	3.28	3.13	52.42	
Reinet Investments S.C.A	RNI	50003	2.98	2.63	7.25	
British American Tob plc	BTI	63140	2.73	3.86	16.60	
Brait PLC	BAT	164	2.50	1.23	-9.89	
Alexander Forbes Grp Hldgs	AFH	753	2.45	7.11	14.09	
AVI Ltd	AVI	11409	1.88	4.87	39.02	

WORST ONE-DAY % PERFORMERS						
	CODE	CLOSE	1D%	5D%	YTD%	
Sibanye Stillwater Ltd	SSW	2038	-8.86	-6.30	-18.15	
Montauk Renewables Inc	MKR	9227	-8.74	-8.67	-46.35	
Impala Platinum Hlgs Ltd	IMP	11329	-7.22	-6.81	24.13	
Northam Platinum Hldgs Ltd	NPH	12597	-6.68	-10.21	-10.30	
Anglo American Plat Ltd	AMS	66893	-6.02	-8.76	-30.61	

DIVIDEND DATA

COMPANY	CODE	EXPECTED DIVIDEND	COMPANY	CODE	EXPECTED DIVIDEND
Netcare	NTCP	485 ZARc	--	--	--
Spear REIT	SEA	39 ZARc	--	--	--
Remgro	REM	184 ZARc	--	--	--
--	--	--	--	--	--
--	--	--	--	--	--

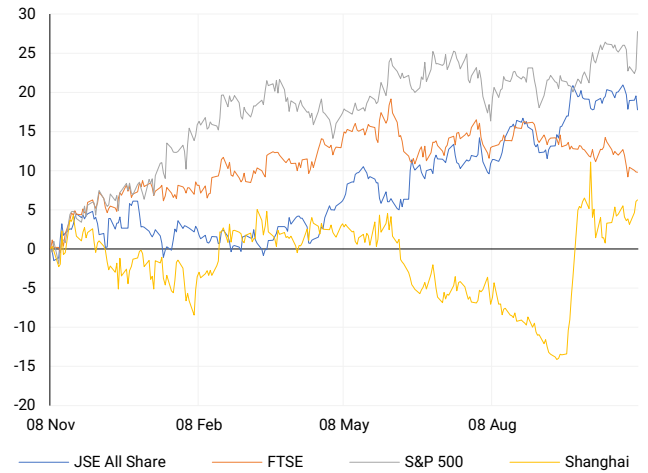
Last date to trade Tue, 12 November

SOURCES | JSE, IRESS, MONEYWEB, CNBC, BBC, CNN

PLEASE SEE THE BOTTOM OF THE LAST PAGE FOR THE FULL DISCLAIMER

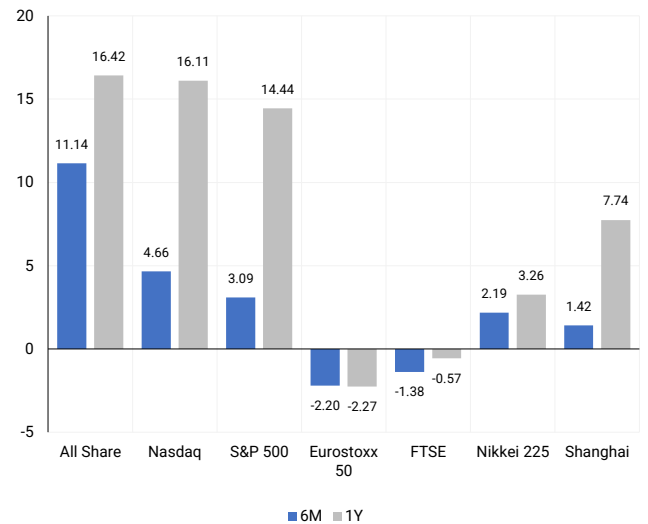
INTERNATIONAL INDICES

Normalised percentage performances - In rand terms



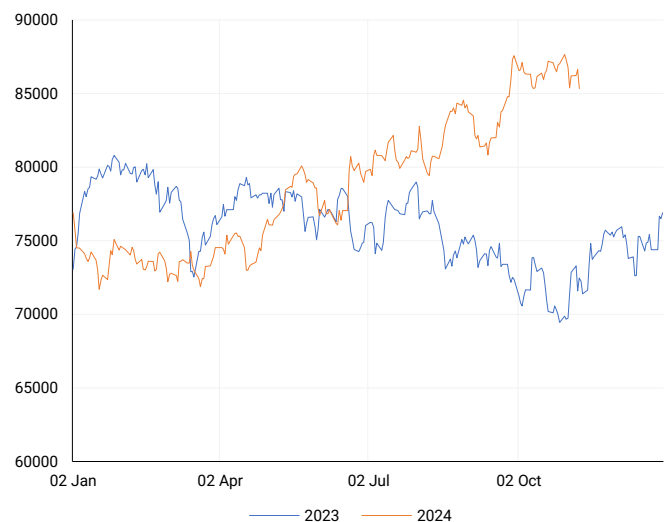
INTERNATIONAL INDICES

6-month & 1-year percentage performances



JSE ALL SHARE INDEX

2023 v 2024 to date



LOCAL EQUITIES | JSE LARGE CAP COMPANIES (Cents Per Share)

COMPANY	CLOSE	PREVIOUS	1D%	5D%	1M%	YTD%
Absa Group Limited	17067	17151	-0.49	0.61	0.72	4.25
Anglo American plc	54253	54980	-1.32	-1.93	-1.89	14.58
Anglo American Plat Ltd	66893	71179	-6.02	-8.76	0.19	-30.61
Anglogold Ashanti Ltd	45784	48111	-4.84	-10.20	-0.90	29.55
Anheuser-Busch InBev SA NV	101100	103157	-1.99	-9.89	-12.32	-15.76
BHP Group Limited	48768	49358	-1.20	-3.00	-8.07	-23.01
BID Corporation Ltd	43137	42626	1.20	2.11	-2.34	1.11
British American Tob plc	63140	61462	2.73	3.86	2.97	16.60
Compagnie Fin Richemont	253100	250056	1.22	-2.52	-5.37	-1.43
Capitec Bank Hldgs Ltd	327422	330800	-1.02	3.54	6.29	61.58
Discovery Ltd	18236	18431	-1.06	0.47	7.10	26.92
Firststrand Ltd	7699	7736	-0.48	-0.49	-5.71	4.73
Gold Fields Ltd	27562	28998	-4.95	-9.90	0.65	-0.78
Glencore plc	9070	9199	-1.40	-4.40	-8.53	-18.76
Impala Platinum Hlgs Ltd	11329	12210	-7.22	-6.81	6.05	24.13
Kumba Iron Ore Ltd	34956	35682	-2.03	0.89	-8.50	-43.14
Mondi plc	27837	28379	-1.91	-4.28	-14.18	-23.31
MTN Group Ltd	8475	8684	-2.41	-3.24	-1.27	-26.62
Naspers Ltd -N-	415219	423446	-1.94	-1.52	-4.13	32.74
Prosus N.V.	73980	75493	-2.00	-1.81	-5.62	32.02
South32 Limited	4288	4304	-0.37	1.06	-1.45	1.64
Standard Bank Group Ltd	24560	24962	-1.61	1.14	3.46	18.02
Shoprite Holdings Ltd	31002	30946	0.18	2.29	6.90	12.71
Sanlam Limited	8767	8906	-1.56	-1.97	0.86	20.43
Sasol Limited	10412	10589	-1.67	4.66	-17.79	-43.81
Sibanye Stillwater Ltd	2038	2236	-8.86	-6.30	0.20	-18.15
Vodacom Group Ltd	10597	10830	-2.15	-4.00	0.81	-0.03

SOUTH AFRICAN MARKET SUMMARY

SELECTED ITEMS

The Johannesburg Stock Exchange's Top 40 index closed down 1.61% at 77,232 points on Wednesday, while the All Share index ended the session 1.52% lower at 85,329 points. The National Union of Mineworkers (NUM) announced a wage agreement with Sibanye Stillwater's gold operations, securing a 900-rand monthly pay increase for the lowest-paid workers and a 5.5% raise for miners, artisans, and officials. Retail giant Pepkor Holdings reported a strong fiscal year ending September 30, 2024, with group revenue rising 7.8% to R85.1 billion.

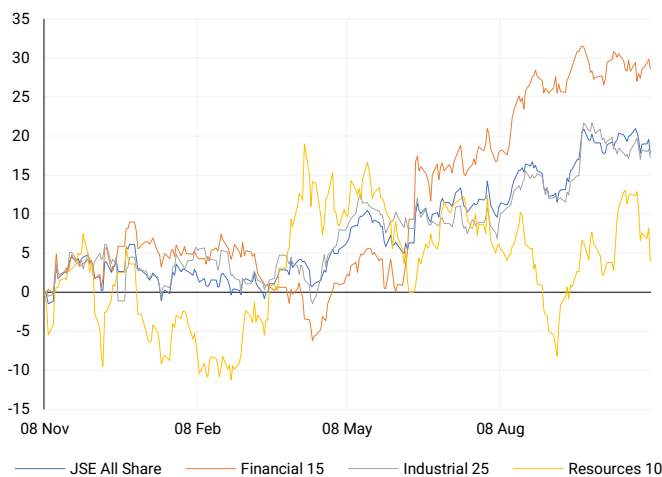
JSE ALL SHARE

One-year



LOCAL INDICES

Normalised percentage performances



LOCAL SENS ANNOUNCEMENTS

SELECTED RELEASE

PEPKOR HOLDINGS LIMITED – Trading Update and Trading Statement

For the year ending September 30, 2024, the group's revenue grew by 7.8% to R85.1 billion, with a 9.2% increase when adjusted for a comparable 52-week period. The Clothing & General Merchandise segment rose by 5.2% (7.0% on a 52-week basis), and Furniture, Appliances & Electronics grew by 4.5%. Despite challenging market conditions, the group expanded market share in clothing, cellular, and home categories. The Fintech segment saw a significant 26.8% revenue increase, driven by strategic growth in financial services and mobile connectivity, supported by the Flash business's reach in informal markets. Following the sale of The Building Company on September 30, 2024, the group exited the building materials sector to focus on enhancing capital returns. Expected earnings per share (EPS) for FY24 are projected at 61.0–65.4 cents, marking a 241%–251% increase from the prior year.

PPH | -0.18% OPEN | 2279c HIGH | 2279c LOW | 2213c CLOSE | 2250c TIME | 07:15

NOVUS HOLDINGS LIMITED – Initial Trading Statement

For the six months ending September 30, 2024, the group's basic earnings per share (EPS) are expected to rise between 78.1% and 98.1%, reaching 56.30 to 62.62 cents, compared to 31.61 cents in the same period last year. Headline earnings per share (HEPS) are also expected to grow significantly, by 96.3% to 116.3%, reaching 56.48 to 62.24 cents, compared to 28.77 cents last year. These gains were boosted by orders processed earlier than usual and profits from derivative instruments. The interim results will be published around November 21, 2024.

NVS | 0.00% OPEN | 809c HIGH | 809c LOW | 779c CLOSE | 779c TIME | 12:00

EXPECTED COMPANY REPORTING SCHEDULE

COMPANY	CODE	RELEASE	DATE
Sappi	SAP	Final	8 Nov '24
TFG	TFG	Interim	8 Nov '24
Clientele	CLI	Final	13 Nov '24
Vodacom	VOD	Interim	14 Nov '24
Reinet	RNI	Interim	15 Nov '24

BANK AND OTHER SELECTE PREFERENCE SHARES

COMPANY	CODE	CLOSE	CLEAN YIELD	NEXT LDT (Est.)
Investec Limited	INPR	9320	11.24	Thu, 28 Nov '24
Standard Bank	SBPP	9500	11.15	Wed, 02 Apr '25
Absa	ABSP	85900	11.48	Wed, 16 Apr '25
Capitec	CPIP	10200	9.69	Tue, 18 Mar '25
Grindrod	GNDP	9400	12.22	Wed, 02 Apr '25
Netcare	NTCP	8700	11.82	Thu, 31 Oct '24
Discovery	DSBP	10022	11.91	Tue, 18 Mar '25

LOCAL EQUITIES | JSE MID CAP COMPANIES (Cents Per Share)

COMPANY	CODE	CLOSE	PREVIOUS	1D%	1M%	YTD%
Aspen Pharmacare Hldgs Ltd	APN	18000	18115	-0.63	-6.25	-11.55
African Rainbow Min Ltd	ARI	17534	18005	-2.62	-7.42	-12.33
AVI Ltd	AVI	11409	11199	1.88	5.00	39.02
Barloworld Ltd	BAW	8392	8238	1.87	-1.72	6.23
Bidvest Ltd	BVT	28385	28833	-1.55	0.26	12.51
Bytes Technology Grp PLC	BYI	10148	10368	-2.12	-12.41	-29.14
Capital&Counties Prop plc	CCO	2967	3039	-2.37	-10.36	-8.71
Clicks Group Ltd	CLS	38167	38295	-0.33	1.34	17.18
Dis-Chem Pharmacies Ltd	DCP	3757	3801	-1.16	0.11	22.42
Exxaro Resources Ltd	EXX	16309	16654	-2.07	-1.38	-20.24
Fortress Real Est INV B	FFB	1880	1883	-0.16	-7.02	30.92
Growthpoint Prop Ltd	GRT	1290	1296	-0.46	-6.52	10.45
Harmony GM Co Ltd	HAR	17909	18994	-5.71	4.35	49.75
Hammerson plc	HMN	6630	6775	-2.14	-6.36	875.00
Investec Ltd	INL	13837	13809	0.20	7.14	10.18
Investec plc	INP	13857	13899	-0.30	6.88	10.02
Italtile Ltd	ITE	1360	1365	-0.37	5.43	21.43
Life Healthc Grp Hldgs Ltd	LHC	1641	1644	-0.18	-3.53	-10.67
MultiChoice Group Ltd	MCG	11141	11200	-0.53	1.25	37.51
Montauk Renewables Inc	MKR	9227	10111	-8.74	-2.87	-46.35
Mr Price Group Ltd	MRP	25643	25922	-1.08	-2.83	63.53
Momentum Met Hldgs Ltd	MTM	2922	2956	-1.15	-0.65	33.49
Ninety One Plc	N91	3760	3771	-0.29	-10.48	-12.80
Nedbank Group Ltd	NED	29562	30277	-2.36	1.61	36.72
Northam Platinum Hldgs Ltd	NPH	12597	13499	-6.68	6.97	-10.30
NEPI Rockcastle N.V.	NRP	13969	14040	-0.51	-1.17	10.53
Netcare Limited	NTC	1519	1500	1.27	-2.44	6.67
Ninety One Limited	NY1	3762	3790	-0.74	-11.48	-12.45
Old Mutual Limited	OMU	1270	1294	-1.85	-4.01	-2.76
OUTsurance Group Ltd	OUT	6074	6213	-2.24	2.50	43.93
Pick n Pay Stores Ltd	PIK	2556	2550	0.24	-12.04	9.84
Pepkor Holdings Ltd	PPH	2250	2254	-0.18	-5.46	14.62
Quilter Plc	QLT	3266	3285	-0.58	6.21	34.51
Redefine Properties Ltd	RDF	477	489	-2.45	-4.22	23.90
Remgro Ltd	REM	15089	15218	-0.85	-3.59	-7.13
Resilient REIT Limited	RES	5621	5661	-0.71	-1.16	26.91
Reinet Investments S.C.A	RNI	50003	48554	2.98	9.11	7.25
Sappi Ltd	SAP	4958	4964	-0.12	0.12	12.17
Santam Limited	SNT	37000	37177	-0.48	1.65	29.11
The Spar Group Ltd	SPP	12799	12974	-1.35	-2.89	8.56
Sirius Real Estate Ltd	SRE	1988	2013	-1.24	-7.45	-10.25
Tiger Brands Ltd	TBS	24005	24215	-0.87	-0.39	19.26
Transaction Capital Ltd	TCP	291	291	0.00	-7.62	-63.53
The Foschini Group Limited	TFG	15218	15402	-1.19	1.62	37.15
Thungela Resources Ltd	TGA	12825	12713	0.88	4.55	-16.61
Telkom SA SOC Ltd	TKG	2625	2657	-1.20	-2.53	-11.74
Truworths Int Ltd	TRU	10967	11077	-0.99	7.00	47.51
Woolworths Holdings Ltd	WHL	6370	6400	-0.47	-3.92	-11.77
Zeda Limited	ZZD	1403	1445	-2.91	-0.85	10.04

LOCAL EQUITIES | JSE SMALL CAP COMPANIES (Cents Per Share)

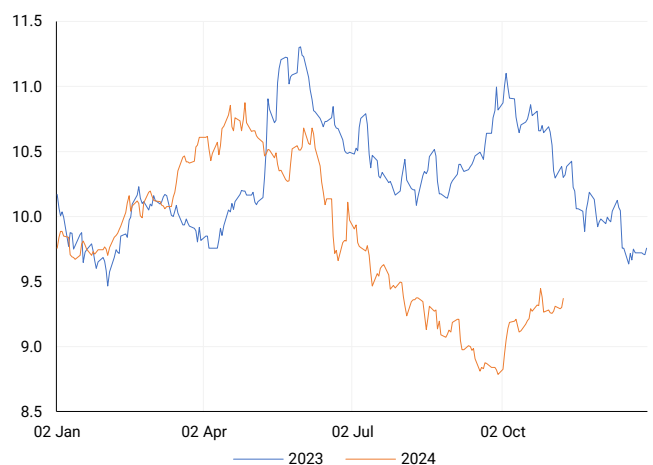
COMPANY	CODE	CLOSE	PREVIOUS	1D%	1M%	YTD%
ArcelorMittal SA Limited	ACL	132	131	0.76	-10.20	-19.51
AdvTECH Ltd	ADH	3180	3199	-0.59	1.18	29.58
Altron Limited A	AEL	2000	1975	1.27	14.16	95.12
AECI Limited	AFE	9721	9960	-2.40	-4.23	-11.38
Alexander Forbes Grp Hldgs	AFH	753	735	2.45	5.46	14.09
Afrimat Limited	AFT	6528	6680	-2.28	-3.46	3.62
African Rainbow Cap Inv	AIL	752	750	0.27	2.31	53.78
Adcock Ingram Hldgs Ltd	AIP	7100	7158	-0.81	1.07	18.14
Astral Foods Ltd	ARL	17030	17145	-0.67	-5.76	16.19
Attacq Limited	ATT	1282	1309	-2.06	5.43	39.05
Brait PLC	BAT	164	160	2.50	8.61	-9.89
Blue Label Telecoms Ltd	BLU	550	557	-1.26	8.91	41.75
Burstone Group	BTN	952	942	1.06	-0.42	19.00
Coronation Fund Mngrs Ld	CML	3960	3983	-0.58	3.94	27.09
Curro Holdings Limited	COH	1311	1309	0.15	0.08	12.53
Cashbuild Ltd	CSB	18200	18150	0.28	8.60	9.03
DRD Gold Ltd	DRD	1975	2075	-4.82	14.83	25.24
Datatec Ltd	DTC	3958	3953	0.13	9.07	-2.27
Emira Property Fund Ltd	EMI	1137	1120	1.52	6.26	32.98
Equites Prop Fund Ltd	EQU	1398	1407	-0.64	-1.89	0.22
Famous Brands Ltd	FBR	6271	6296	-0.40	-0.19	8.25
Fairvest Limited B	FTB	459	457	0.44	1.55	33.43
Grindrod Ltd	GND	1410	1430	-1.40	-7.66	23.04
Hosken Cons Inv Ltd	HCI	19697	19995	-1.49	11.99	-2.78
Hudaco Industries Ltd	HDC	20150	20440	-1.42	6.05	25.44
Hyprop Inv Ltd	HYP	4038	4097	-1.44	-9.26	29.80
JSE Ltd	JSE	12313	12625	-2.47	-2.12	33.20
KAP Industrial Hldgs Ltd	KAP	337	333	1.20	-1.17	28.63
Karooooo Ltd	KRO	72400	70100	3.28	7.42	52.42
PSG Konsult Limited	KST	1840	1876	-1.92	0.88	19.87
Libstar Holdings Ltd	LBR	433	425	1.88	3.59	23.71
Lighthouse Properties plc	LTE	785	785	0.00	-1.26	6.80
Industrials REIT Limited	MLI	23	25	-8.00	43.75	3185.71
MAS P.L.C	MSP	1832	1830	0.11	2.69	5.83
Metair Investments Ltd	MTA	1076	1121	-4.01	-14.67	-39.38
Motus Holdings Ltd	MTH	11849	11839	0.08	2.61	16.74
Murray & Roberts Hldgs	MUR	150	179	-16.20	-44.85	0.67
Oceana Group Ltd	OCE	6898	6901	-0.04	0.36	-2.39
Omnia Holdings Ltd	OMN	6575	6647	-1.08	1.28	0.58
Pan African Resource plc	PAN	786	808	-2.72	0.00	92.18
PPC Limited	PPC	404	405	-0.25	3.86	1.25
Raubex Group Ltd	RBX	4698	4699	-0.02	-9.25	69.48
RFG Holdings Limited	RFG	1670	1636	2.08	-2.11	23.70
Reunert Ltd	RLO	8098	8101	-0.04	0.53	35.10
SA Corp Real Estate Ltd	SAC	278	279	-0.36	-7.02	19.83
Super Group Ltd	SPG	2258	2234	1.07	-3.01	-24.10
Stor-Age Prop REIT Ltd	SSS	1508	1519	-0.72	-1.57	15.47
Southern Sun LTD	SSU	825	834	-1.08	2.48	57.14
Sun International Ltd	SUI	4409	4516	-2.37	-2.09	7.54
Tharisa plc	THA	1690	1700	-0.59	-5.32	11.85
Tsogo Sun Gaming Ltd	TSG	1237	1242	-0.40	-0.16	0.98
Vukile Property Fund Ltd	VKE	1793	1806	-0.72	-3.08	26.98
Wilson Bayly Hlm-Ovc Ltd	WBO	21147	21213	-0.31	-2.99	62.59

10-YEAR BOND YIELD | SELECTED ITEMS (Basis Point Change)

REGION	YIELD	1D	1M	1Y
United States	4.42%	15	45	—
United Kingdom	4.56%	3	43	19
Germany	2.40%	-2	19	-33
Japan	0.98%	6	12	—
South African 10Y	9.39%	9	18	-102

SOUTH AFRICAN 10-YEAR

2023 vs 2024 to date

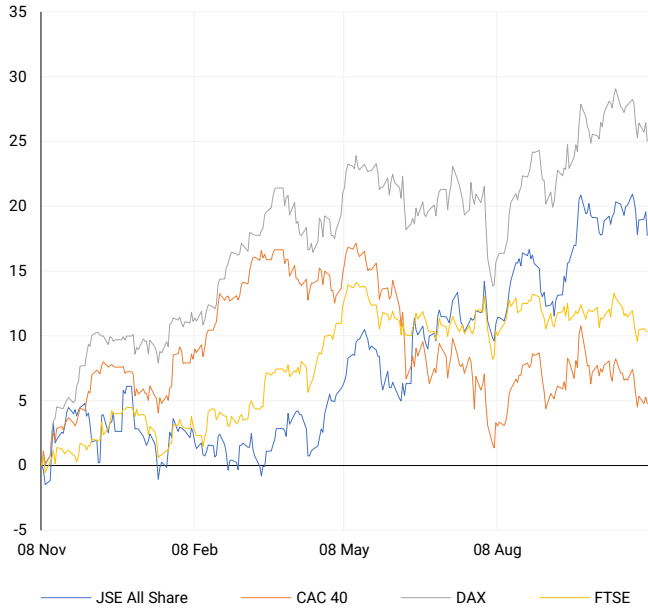


GLOBAL INTEREST RATES | SELECTED ITEMS

REGION	DATE CHANGED	CURRENT RATE
United States	Sep '24	4.75%-5.00%
United Kingdom	Aug '24	5.00%
European	Oct '24	3.40%
SA Repo Rate	Sep '24	8.00%
SA Prime Rate	Sep '24	11.50%

EUROPEAN INDICES

Normalised percentage performances

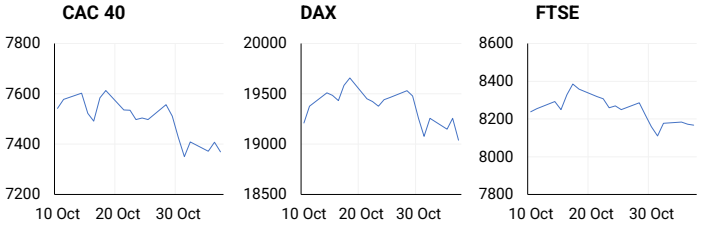


EUROPEAN MARKET SUMMARY

SELECTED ITEMS

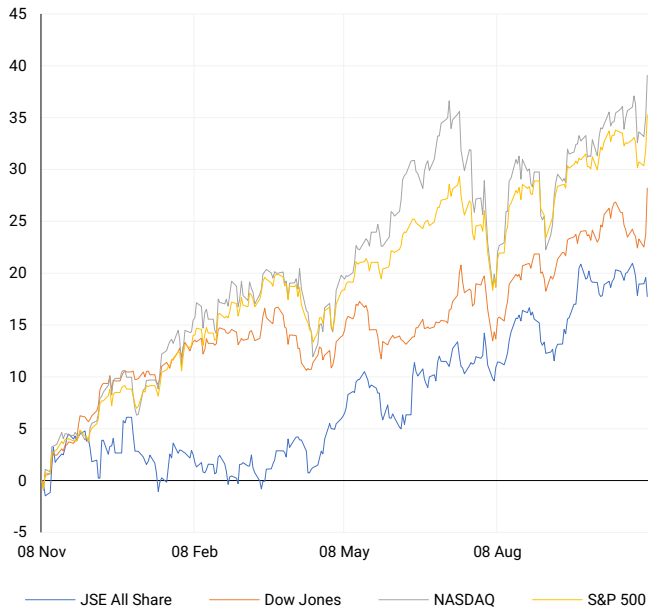
European shares closed lower on Wednesday after an initial rally, weighed down by a drop in utilities shares due to concerns that U.S. President-elect Donald Trump might stop approvals for new offshore wind projects. Trump also threatened a 10% import tariff on all countries and warned the European Union of consequences for not buying enough U.S. exports. Many STOXX 600 companies, which rely on the U.S. for a substantial portion of their revenue, are affected by these potential trade policies, as only about 40% of their income comes from within Europe.

EUROPEAN INDICES	CLOSE	PREVIOUS	1D%	5D%	1M%	YTD%
CAC 40	7369.61	7407.15	-0.51	-0.79	-2.28	-2.30
DAX 30	19039.31	19256.27	-1.13	-1.13	-0.43	13.66
Eurostoxx 50	4845.80	4854.10	-0.17	-1.06	-2.20	7.17
FTSE	8166.68	8172.39	-0.07	0.09	-1.38	5.60



AMERICAN INDICES

Normalised percentage performances



AMERICAN MARKET SUMMARY

SELECTED ITEMS

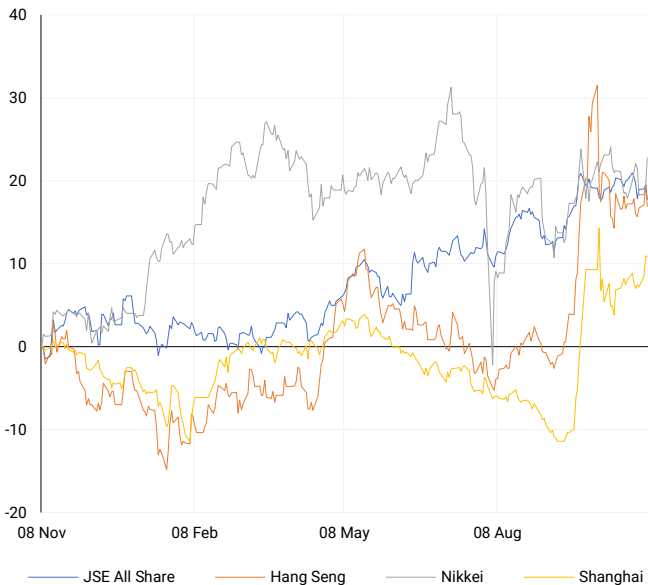
U.S. stocks surged to record highs on Wednesday following Donald Trump's unexpected 2024 presidential election victory, marking a comeback after his 2020 loss. The Dow, S&P 500, and Nasdaq all hit new peaks as investors anticipated benefits from lower taxes, deregulation, and Trump's active involvement in economic matters, though new tariffs could increase the deficit and inflation. Cryptocurrency, energy, and prison-related stocks saw significant gains, while renewable energy shares declined.

AMERICAN INDICES	CLOSE	PREVIOUS	1D%	5D%	1M%	YTD%
Dow Jones	43729.93	42221.88	3.57	3.77	3.25	16.03
Nasdaq	18983.46	18439.17	2.95	2.02	4.66	26.46
S&P 500	5929.04	5782.76	2.53	1.98	3.09	24.30
US VIX	16.27	20.49	-20.60	-20.05	-15.30	30.68



ASIAN INDICES

Normalised percentage performances



ASIAN MARKET SUMMARY

SELECTED ITEMS

Asia-Pacific markets showed mixed results this morning, with Hong Kong and mainland Chinese stocks mostly falling as Donald Trump's U.S. election victory appeared increasingly certain. In China, state media reported that the National People's Congress standing committee continued discussions on raising local government debt, a plan initially reviewed on Monday. Local governments in China, traditionally responsible for much public service spending, are facing financial strain due to reduced revenue from land sales to developers.

ASIAN INDICES	CLOSE	PREVIOUS	1D%	5D%	1M%	YTD%
Hang Seng	20538.38	21006.97	-2.23	0.77	-9.67	20.48
Nikkei 225	39480.67	38474.90	2.61	0.52	2.19	17.98
Shanghai	3383.81	3386.99	-0.09	3.60	1.42	13.74



COMMODITIES MARKET SUMMARY

SELECTED ITEMS

Gold prices fell to a three-week low on Wednesday as investors flocked to the U.S. dollar following Donald Trump's presidential election victory. Meanwhile, oil prices ticked up this morning after an election-related sell-off, with concerns over potential supply risks under Trump's presidency and an approaching hurricane in the Gulf Coast offsetting the impact of a stronger dollar and higher oil inventories.

COMMODITY	LAST	CLOSE	% CHG	1D%	5D%	YTD%
Brent Crude	75.56	75.16	0.53	-0.42	2.87	-2.49
Gold	2657.41	2659.11	-0.06	-3.09	-4.61	28.89
Palladium	1025.98	1031.00	-0.49	-4.36	-10.35	-6.04
Platinum	982.65	983.30	-0.07	-1.72	-2.99	-0.40
Silver	31.00	31.18	-0.58	-4.53	-7.67	31.07

BRENT CRUDE

One-year



PLATINUM

One-year



GOLD

One-year



CURRENCY MARKET SUMMARY

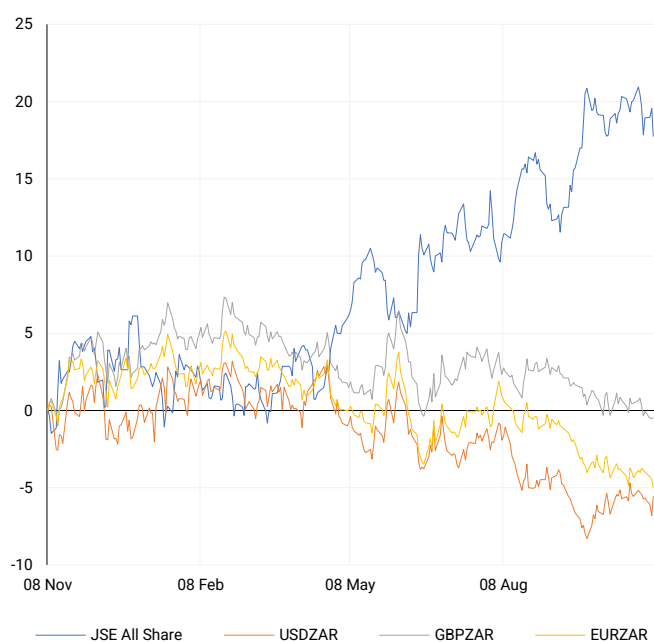
SELECTED ITEMS

The South African rand dropped sharply against a strengthening U.S. dollar on Wednesday as "Trump trades" gained momentum following Donald Trump's election victory. This morning, the dollar remained near a four-month high as markets continued to absorb the election results and awaited decisions from several central banks, culminating with the Federal Reserve's announcement.

CURRENCY PAIR	LAST	CLOSE	% CHG	1D%	5D%	YTD%
USDZAR	17.60	17.63	-0.14	1.34	-0.14	-3.80
GBPZAR	22.74	22.70	0.19	0.03	-0.80	-2.56
EURZAR	18.90	18.91	-0.05	-0.53	-1.31	-6.32
AUDZAR	11.65	11.58	0.62	0.27	-0.17	-7.02
EURUSD	1.07	1.07	0.10	-1.83	-1.18	-2.80
USDJPY	154.09	154.64	-0.35	1.99	0.79	9.64
GBPUSD	1.29	1.29	0.32	-1.25	-0.65	1.16
USDCHF	0.88	0.88	-0.07	1.53	1.12	4.15

CURRENCY PAIRS vs JSE ALL SHARE

Normalised percentage performances



USDZAR

One-year



EURUSD

One-year



SOURCES | JSE, IRESS, MONEYWEB, CNBC, BBC, CNN

Disclaimer: This note is prepared for Sanlam Private Wealth (Pty) Ltd, by K2013143132 (Pty) Ltd trading as ThompsonGreen. ThompsonGreen is an independent company contracted to Sanlam Private Wealth (Pty) Ltd. The views expressed in this note are those of ThompsonGreen and/or its analysts and not necessarily the views of Sanlam Private Wealth (Pty) Ltd, Sanlam or any officer or agent thereof. K2013143132 (Pty) Ltd trading as ThompsonGreen is a research house and not a registered broker, financial adviser or financial service provider. Our editors and customer services teams also do not give personal investment advice. The information in this document is general advice only and may not be appropriate to your particular investment objectives, financial situation or particular needs. Before investing, or if you are in any doubt about your personal situation, you should seek professional advice from a stockbroker or independent financial adviser authorised by the Financial Sector Conduct Authority.