

GLOBAL OVERVIEW | SELECTED INDICES

SOUTH AFRICAN INDICES						
	CLOSE	PREVIOUS	1D%	5D%	1M%	YTD%
All Share	85998.22	85329.75	0.78	0.72	-0.36	11.84
Top 40	77880.84	77232.33	0.84	0.72	-0.54	10.48
Financial 15	21265.10	21090.42	0.83	1.79	1.57	18.98
Industrial 25	115911.03	116384.66	-0.41	-0.18	-3.36	11.76
Resource 10	59494.62	57703.25	3.10	0.53	2.39	3.41
Mid Cap	91972.18	91450.21	0.57	0.50	1.58	14.37
Small Cap	88153.36	87749.52	0.46	0.16	0.01	21.60
Banks	13248.30	13119.55	0.98	2.14	1.70	21.01
Retailers	7564.33	7732.86	-2.18	-2.97	-1.98	21.35
Property (J253) - TR	2352.01	2336.35	0.67	-0.12	-1.08	26.20

AMERICAN INDICES						
	CLOSE	PREVIOUS	1D%	5D%	1M%	YTD%
Dow Jones	43729.34	43729.93	0.00	4.71	4.23	16.03
Nasdaq	19269.46	18983.46	1.51	6.49	7.51	28.37
S&P 500	5973.10	5929.04	0.74	4.69	4.87	25.23
US VIX	15.20	16.27	-6.58	-34.37	-32.86	22.09

EUROPEAN INDICES						
	CLOSE	PREVIOUS	1D%	5D%	1M%	YTD%
CAC 40	7425.60	7369.61	0.76	1.02	-1.99	-1.56
DAX 30	19362.52	19039.31	1.70	1.49	1.35	15.59
Eurostoxx 50	4848.00	4845.80	0.05	0.44	-2.54	7.22
FTSE	8140.74	8166.68	-0.32	0.38	-1.96	5.27

ASIAN INDICES						
	CLOSE	PREVIOUS	1D%	5D%	1M%	YTD%
Hang Seng	20953.34	20538.38	2.02	3.13	-9.29	22.91
Nikkei 225	39381.41	39480.67	-0.25	0.77	0.12	17.68
Shanghai	3470.66	3383.81	2.57	5.82	4.02	16.66

EARLY MORNING MARKETS						
	LAST	CLOSE	% CHG	1D%	5D%	YTD%
TENCENT	421.80	428.40	-1.54	2.05	5.88	47.62
BHP AUS	4352.00	4299.00	1.23	0.92	0.82	-10.06

NOTE: 5D% and 1M% are rolling percentage moves

INTERNATIONAL ECONOMIC CALENDAR | SELECTED EVENTS

TIME	AREA	TODAY'S EVENTS & RELEASES	PERIOD	EXP.	PREV.
17:00	US	Michigan Consumer Sentiment Prel	Nov	70.6	70.5
17:00	US	Michigan Inflation Expectations Prel	Nov	2.7%	2.7%
--	--	--	--	--	--
--	--	--	--	--	--
--	--	--	--	--	--

TIME	AREA	PREVIOUS SESSION'S RELEASES	PERIOD	EXP.	ACT.
08:00	ZA	Foreign Exchange Reserves	Oct	\$64.0B	\$63.0B
14:00	GB	BoE Interest Rate Decision	--	4.8%	4.8%
14:00	GB	BoE Monetary Policy Report	--	--	--
21:00	US	Fed Interest Rate Decision	--	4.8%	4.8%
21:00	US	Fed Press Conference	--	--	--

JSE ALL SHARE | BEST AND WORST ONE-DAY PERFORMERS

BEST ONE-DAY % PERFORMERS						
	CODE	CLOSE	1D%	5D%	YTD%	
Sappi Ltd	SAP	5410	9.12	13.51	22.40	
Montauk Renewables Inc	MKR	9900	7.29	1.87	-42.44	
Impala Platinum Hlgs Ltd	IMP	11986	5.80	3.90	31.32	
Metair Investments Ltd	MTA	1138	5.76	6.16	-35.89	
AngloGold Ashanti plc	ANG	48228	5.34	-1.55	36.46	
Thungela Resources Ltd	TGA	13369	4.24	5.37	-13.08	

WORST ONE-DAY % PERFORMERS						
	CODE	CLOSE	1D%	5D%	YTD%	
Truworths Int Ltd	TRU	10299	-6.09	-7.84	38.52	
Grindrod Ltd	GND	1350	-4.26	-4.26	17.80	
The Foschini Group Limited	TFG	14684	-3.51	-4.30	32.34	
Mr Price Group Ltd	MRP	24917	-2.83	-2.61	58.90	
Adcock Ingram Hldgs Ltd	AIP	6916	-2.59	-0.42	15.07	

DIVIDEND DATA

COMPANY	CODE	EXPECTED DIVIDEND	COMPANY	CODE	EXPECTED DIVIDEND
Netcare	NTCP	485 ZARc	--	--	--
Spear REIT	SEA	39 ZARc	--	--	--
Remgro	REM	184 ZARc	--	--	--
--	--	--	--	--	--
--	--	--	--	--	--

COMPANY	CODE	EXPECTED DIVIDEND	COMPANY	CODE	EXPECTED DIVIDEND
Netcare	NTCP	485 ZARc	--	--	--
Spear REIT	SEA	39 ZARc	--	--	--
Remgro	REM	184 ZARc	--	--	--
--	--	--	--	--	--
--	--	--	--	--	--

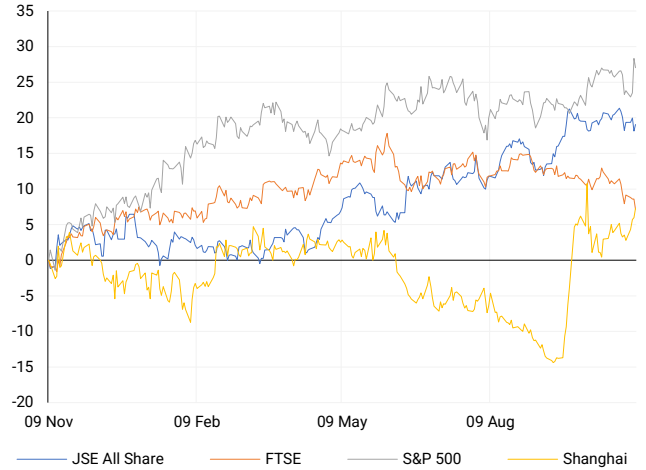
COMPANY	CODE	EXPECTED DIVIDEND	COMPANY	CODE	EXPECTED DIVIDEND
Netcare	NTCP	485 ZARc	--	--	--
Spear REIT	SEA	39 ZARc	--	--	--
Remgro	REM	184 ZARc	--	--	--
--	--	--	--	--	--
--	--	--	--	--	--

SOURCES | JSE, IRESS, MONEYWEB, CNBC, BBC, CNN

PLEASE SEE THE BOTTOM OF THE LAST PAGE FOR THE FULL DISCLAIMER

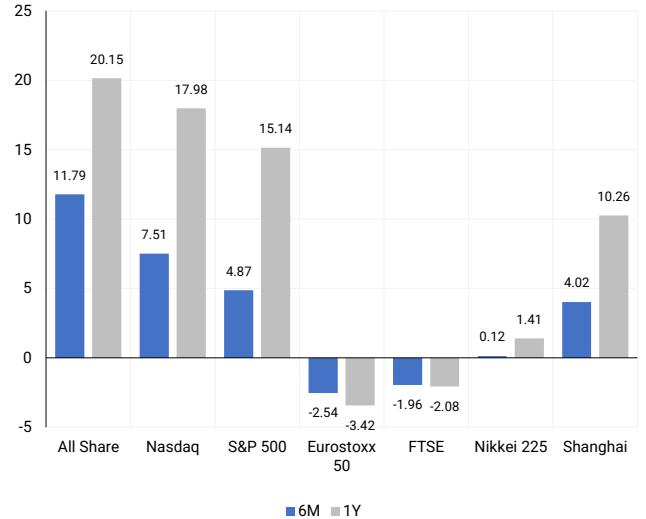
INTERNATIONAL INDICES

Normalised percentage performances - In rand terms



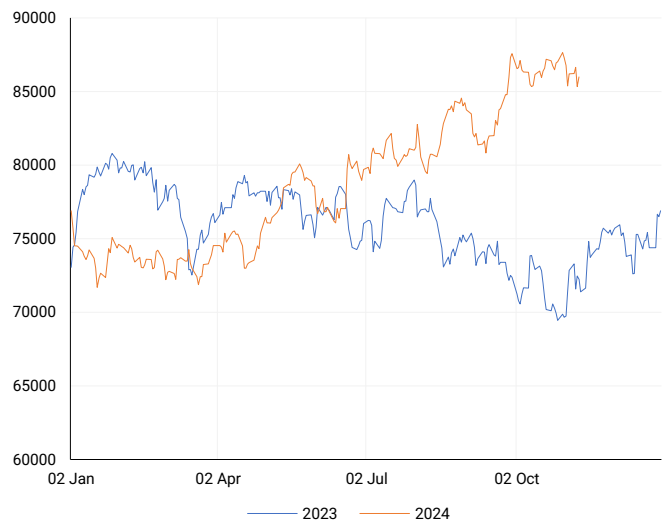
INTERNATIONAL INDICES

6-month & 1-year percentage performances



JSE ALL SHARE INDEX

2023 v 2024 to date



Last date to trade Tue, 12 November

LOCAL EQUITIES | JSE LARGE CAP COMPANIES (Cents Per Share)

COMPANY	CLOSE	PREVIOUS	1D%	5D%	1M%	YTD%
Absa Group Limited	16990	17067	-0.45	0.75	0.53	3.78
Anglo American plc	55832	54253	2.91	2.75	0.69	17.92
Anglo American Plat Ltd	69578	66893	4.01	0.98	6.64	-27.82
Anglogold Ashanti Ltd	48228	45784	5.34	-1.55	6.26	36.46
Anheuser-Busch InBev SA NV	100979	101100	-0.12	-3.87	-11.15	-15.86
BHP Group Limited	50250	48768	3.04	2.99	-5.02	-20.67
BID Corporation Ltd	43301	43137	0.38	3.80	-1.53	1.49
British American Tob plc	61953	63140	-1.88	1.56	1.37	14.41
Compagnie Fin Richemont	254500	253100	0.55	0.01	-6.08	-0.88
Capitec Bank Hldgs Ltd	330995	327422	1.09	4.39	7.60	63.34
Discovery Ltd	18347	18236	0.61	1.90	7.47	27.69
Firstrand Ltd	7897	7699	2.57	2.43	-3.68	7.43
Gold Fields Ltd	28172	27562	2.21	-2.91	4.92	1.42
Glencore plc	9418	9070	3.84	2.43	-5.38	-15.65
Impala Platinum Hlgs Ltd	11986	11329	5.80	3.90	15.48	31.32
Kumba Iron Ore Ltd	35939	34956	2.81	8.25	-9.54	-41.54
Mondi plc	27900	27837	0.23	-1.70	-14.68	-23.14
MTN Group Ltd	8385	8475	-1.06	-4.20	-2.36	-27.40
Naspers Ltd -N-	414328	415219	-0.21	-0.02	-6.26	32.46
Prosus N.V.	74088	73980	0.15	0.51	-6.02	32.21
South32 Limited	4460	4288	4.01	7.99	3.46	5.71
Standard Bank Group Ltd	24460	24560	-0.41	1.26	2.93	17.54
Shoprite Holdings Ltd	31301	31002	0.96	3.26	7.93	13.80
Sanlam Limited	8853	8767	0.98	0.91	2.69	21.61
Sasol Limited	10612	10412	1.92	8.09	-15.34	-42.73
Sibanye Stillwater Ltd	2109	2038	3.48	4.05	5.66	-15.30
Vodacom Group Ltd	10370	10597	-2.14	-5.73	-1.37	-2.17

SOUTH AFRICAN MARKET SUMMARY

SELECTED ITEMS

The Top 40 index gained 0.84% yesterday, closing at 77,880 points, while the All Share index ended the session 0.78% higher at 85,998 points. South Africa's net foreign reserves saw a slight increase, reaching \$61.197 billion by the end of October. Meanwhile, Cape Town-based retailer Truworths International experienced a share price drop of over 4% after releasing a lacklustre four-month business update. In contrast, Lesaka Technologies remains positive about its recent acquisition of Adumo, anticipating that the integration will strengthen its position in the fintech market for both merchants and consumers.

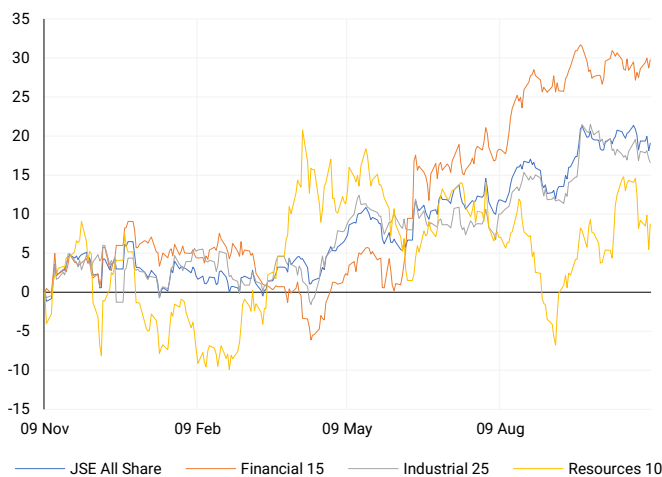
JSE ALL SHARE

One-year



LOCAL INDICES

Normalised percentage performances



LOCAL SENS ANNOUNCEMENTS

SELECTED RELEASE

ANGLOGOLD ASHANTI PLC – Q3 2024 Earnings

In Q3 2024, AngloGold Ashanti achieved its highest gold production of the year for managed operations, reaching 586,000 ounces, up from 577,000 ounces in Q3 2023. Despite a slight decline in total group production to 657,000 ounces, individual sites like Obuasi, Siguiri, Tropicana, Cerro Vanguardia, and Sunrise Dam saw significant year-over-year gains. Operational improvements, along with a higher gold price, drove strong financial results: adjusted EBITDA surged by 339% to \$746 million, and free cash flow soared to \$347 million from just \$20 million in Q3 2023. However, total cash costs increased to \$1,172 per ounce, impacting the all-in sustaining cost (AISC), which rose to \$1,616 per ounce. The Obuasi mine saw a notable 15% increase in production and cost reductions, and it plans to adopt a cost-effective hybrid mining approach in 2025.

ANG | 5.34% OPEN | 45884c HIGH | 48747c LOW | 45534c CLOSE | 48228c TIME | 13:29

MULTICHOICE GROUP LIMITED – Interim Trading Statement

The table shows expected changes in key financial metrics for the six months ending September 30, 2024, compared to the same period in 2023. Loss per share is projected to improve by 34–38%, and headline loss per share by 45–49%. Trading profit is expected to decrease by 44–48%, though on an organic basis (excluding certain items), it may see a smaller decrease or slight increase of -3% to +1%. Excluding Showmax, organic trading profit is expected to drop sharply by around 97–101%.

MCG | -0.37% OPEN | 11000c HIGH | 11200c LOW | 11000c CLOSE | 11100c TIME | 17:50

LESAKA TECHNOLOGIES INC. – Q1 2025 Results

In Q1 2025, the company generated revenue of \$145.5 million, up from \$136.1 million in Q1 2024 and within the expected range. It reported an operating loss of \$0.05 million, due to \$1.7 million in one-time transaction costs from acquiring Adumo. Excluding these costs, operating income would have been \$1.7 million. The net loss, after Adumo costs, improved by 23% year-over-year to \$4.5 million. The GAAP loss per share also improved by 24% to \$0.07, while Adjusted EBITDA rose 12% to \$9.4 million. The Consumer Division saw a strong 30% revenue increase, with a 99% rise in Segment Adjusted EBITDA, while the Merchant Division revenue remained stable with a slight 1% decline in Segment Adjusted EBITDA.

LSK | -4.37% OPEN | 8826c HIGH | 8826c LOW | 8811c CLOSE | 8825c TIME | 07:05

SAPPI LIMITED – Results

For the quarter ending September 2024, sales rose by 6% to \$1,464 million compared to Q4 2023, while adjusted EBITDA increased by 35% to \$226 million. Year-over-year, however, full-year sales declined by 6% to \$5,458 million, with adjusted EBITDA down 6% to \$684 million. Quarterly profit reached \$79 million, reversing a loss of \$40 million from the prior year, but full-year profit dropped sharply by 87% to \$33 million. Headline earnings per share (EPS) turned positive at 9 cents for the quarter, while full-year headline EPS fell by 98% to just 1 cent. Adjusted EPS increased 150% for the quarter but decreased by 21% year-over-year. Net debt rose by 31% to \$1,422 million, and the annual dividend per share was reduced slightly by 7% to 14 cents.

SAP | 9.12% OPEN | 5162c HIGH | 5526c LOW | 5128c CLOSE | 5410c TIME | 08:00

EXPECTED COMPANY REPORTING SCHEDULE

COMPANY	CODE	RELEASE	DATE
Sappi	SAP	Final	8 Nov '24
TFG	TFG	Interim	8 Nov '24
Clientele	CLI	Final	13 Nov '24
Vodacom	VOD	Interim	14 Nov '24
Reinet	RNI	Interim	15 Nov '24

BANK AND OTHER SELECTE PREFERENCE SHARES

COMPANY	CODE	CLOSE	CLEAN YIELD	NEXT LDT (Est.)
Investec Limited	INPR	9350	11.24	Thu, 28 Nov '24
Standard Bank	SBPP	9301	11.15	Wed, 02 Apr '25
Absa	ABSP	85794	11.48	Wed, 16 Apr '25
Capitec	PIPP	10200	9.69	Tue, 18 Mar '25
Grindrod	GNDP	9500	12.22	Wed, 02 Apr '25
Netcare	NTCP	8610	11.82	Thu, 31 Oct '24
Discovery	DSBP	10001	11.91	Tue, 18 Mar '25

LOCAL EQUITIES | JSE MID CAP COMPANIES (Cents Per Share)

COMPANY	CODE	CLOSE	PREVIOUS	1D%	1M%	YTD%
Aspen Pharmacare Hldgs Ltd	APN	17957	18000	-0.24	-6.23	-11.76
African Rainbow Min Ltd	ARI	17966	17534	2.46	-2.36	-10.17
AVI Ltd	AVI	11357	11409	-0.46	5.52	38.38
Barloworld Ltd	BAW	8515	8392	1.47	-0.86	7.78
Bidvest Ltd	BVT	28500	28385	0.41	1.07	12.97
Bytes Technology Grp PLC	BYI	10227	10148	0.78	-11.96	-28.59
Capital&Counties Prop plc	CCO	3003	2967	1.21	-7.00	-7.60
Clicks Group Ltd	CLS	38751	38167	1.53	3.19	18.97
Dis-Chem Pharmacies Ltd	DCP	3786	3757	0.77	1.45	23.36
Exxaro Resources Ltd	EXX	16592	16309	1.74	-3.14	-18.86
Fortress Real Est INV B	FFB	1889	1880	0.48	-5.46	31.55
Growthpoint Prop Ltd	GRT	1315	1290	1.94	-5.80	12.59
Harmony GM Co Ltd	HAR	18036	17909	0.71	9.53	50.82
Hammerson plc	HMN	6666	6630	0.54	-4.77	880.29
Investec Ltd	INL	14008	13837	1.24	6.94	11.54
Investec plc	INP	14035	13857	1.28	6.97	11.43
Italtile Ltd	ITE	1375	1360	1.10	7.67	22.77
Life Healthc Grp Hldgs Ltd	LHC	1643	1641	0.12	-2.61	-10.56
MultiChoice Group Ltd	MCG	11100	11141	-0.37	0.88	37.00
Montauk Renewables Inc	MKR	9900	9227	7.29	4.01	-42.44
Mr Price Group Ltd	MRP	24917	25643	-2.83	-3.55	58.90
Momentum Met Hldgs Ltd	MTM	2950	2922	0.96	-0.27	34.76
Ninety One Plc	N91	3803	3760	1.14	-9.77	-11.80
Nedbank Group Ltd	NED	29816	29562	0.86	1.98	37.89
Northam Platinum Hldgs Ltd	NPH	12745	12597	1.17	10.94	-9.24
NEPI Rockcastle N.V.	NRP	13905	13969	-0.46	-1.75	10.03
Netcare Limited	NTC	1494	1519	-1.65	-3.18	4.92
Ninety One Limited	NY1	3823	3762	1.62	-10.49	-11.03
Old Mutual Limited	OMU	1270	1270	0.00	-1.70	-2.76
OUTsurance Group Ltd	OUT	6097	6074	0.38	1.99	44.48
Pick n Pay Stores Ltd	PIK	2567	2556	0.43	-11.97	10.31
Pepkor Holdings Ltd	PPH	2233	2250	-0.76	-6.18	13.75
Quilter Plc	QLT	3280	3266	0.43	6.01	35.09
Redefine Properties Ltd	RDF	482	477	1.05	-2.63	25.19
Remgro Ltd	REM	15402	15089	2.07	-1.66	-5.21
Resilient REIT Limited	RES	5603	5621	-0.32	-1.89	26.51
Reinet Investments S.C.A	RNI	49033	50003	-1.94	5.99	5.17
Sappi Ltd	SAP	5410	4958	9.12	11.92	22.40
Santam Limited	SNT	37221	37000	0.60	1.69	29.88
The Spar Group Ltd	SPP	12810	12799	0.09	-0.77	8.65
Sirius Real Estate Ltd	SRE	1996	1988	0.40	-5.36	-9.89
Tiger Brands Ltd	TBS	23818	24005	-0.78	-0.76	18.33
Transaction Capital Ltd	TCP	294	291	1.03	-8.13	-63.16
The Foschini Group Limited	TFG	14684	15218	-3.51	-1.45	32.34
Thungela Resources Ltd	TGA	13369	12825	4.24	9.28	-13.08
Telkom SA SOC Ltd	TKG	2695	2625	2.67	-0.26	-9.38
Truworths Int Ltd	TRU	10299	10967	-6.09	1.54	38.52
Woolworths Holdings Ltd	WHL	6324	6370	-0.72	-4.20	-12.41
Zeda Limited	ZZD	1425	1403	1.57	1.79	11.76

LOCAL EQUITIES | JSE SMALL CAP COMPANIES (Cents Per Share)

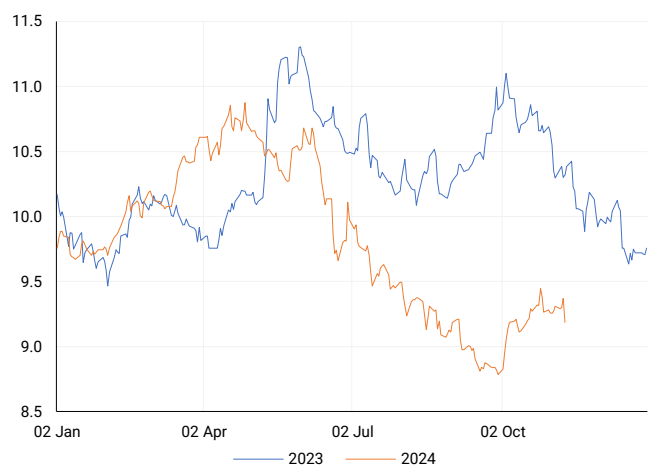
COMPANY	CODE	CLOSE	PREVIOUS	1D%	1M%	YTD%
ArcelorMittal SA Limited	ACL	132	132	0.00	-22.35	-19.51
AdvTECH Ltd	ADH	3184	3180	0.13	1.37	29.75
Altron Limited A	AEL	2021	2000	1.05	12.28	97.17
AECI Limited	AFE	9759	9721	0.39	-2.55	-11.03
Alexander Forbes Grp Hldgs	AFH	750	753	-0.40	7.91	13.64
Afrimat Limited	AFT	6670	6528	2.18	-1.33	5.87
African Rainbow Cap Inv	AIL	764	752	1.60	3.52	56.24
Adcock Ingram Hldgs Ltd	AIP	6916	7100	-2.59	-2.14	15.07
Astral Foods Ltd	ARL	17031	17030	0.01	-6.01	16.20
Attacq Limited	ATT	1322	1282	3.12	4.92	43.38
Brait PLC	BAT	169	164	3.05	10.46	-7.14
Blue Label Telecoms Ltd	BLU	547	550	-0.55	6.42	40.98
Burstone Group	BTN	956	952	0.42	-0.42	19.50
Coronation Fund Mngrs Ld	CML	3971	3960	0.28	1.82	27.44
Curro Holdings Limited	COH	1319	1311	0.61	2.41	13.22
Cashbuild Ltd	CSB	18607	18200	2.24	11.73	11.47
DRD Gold Ltd	DRD	1940	1975	-1.77	14.45	23.02
Datatec Ltd	DTC	3950	3958	-0.20	4.66	-2.47
Emira Property Fund Ltd	EMI	1120	1137	-1.50	2.28	30.99
Equites Prop Fund Ltd	EQU	1420	1398	1.57	-0.28	1.79
Famous Brands Ltd	FBR	6327	6271	0.89	0.68	9.22
Fairvest Limited B	FTB	463	459	0.87	4.28	34.59
Grindrod Ltd	GND	1350	1410	-4.26	-9.40	17.80
Hosken Cons Inv Ltd	HCI	19700	19697	0.02	11.12	-2.76
Hudaco Industries Ltd	HDC	20153	20150	0.01	6.80	25.46
Hyprop Inv Ltd	HYP	4126	4038	2.18	-7.07	32.63
JSE Ltd	JSE	12169	12313	-1.17	-2.65	31.64
KAP Industrial Hldgs Ltd	KAP	343	337	1.78	0.29	30.92
Karooooo Ltd	KRO	73000	72400	0.83	5.95	53.69
PSG Konsult Limited	KST	1825	1840	-0.82	-1.08	18.89
Libstar Holdings Ltd	LBR	450	433	3.93	8.17	28.57
Lighthouse Properties plc	LTE	785	785	0.00	-1.38	6.80
Industrials REIT Limited	MLI	23.5	23	2.17	23.68	3257.14
MAS P.L.C	MSP	1822	1832	-0.55	2.24	5.26
Metair Investments Ltd	MTA	1138	1076	5.76	-8.15	-35.89
Motus Holdings Ltd	MTH	11815	11849	-0.29	1.48	16.40
Murray & Roberts Hldgs	MUR	140	150	-6.67	-49.09	-6.04
Oceana Group Ltd	OCE	6887	6898	-0.16	1.07	-2.55
Omnia Holdings Ltd	OMN	6680	6575	1.60	-0.10	2.19
Pan African Resource plc	PAN	815	786	3.69	4.89	99.27
PPC Limited	PPC	410	404	1.49	5.40	2.76
Raubex Group Ltd	RBX	4779	4698	1.72	-7.69	72.40
RFG Holdings Limited	RFG	1670	1670	0.00	2.77	23.70
Reunert Ltd	RLO	7962	8098	-1.68	-0.65	32.83
SA Corp Real Estate Ltd	SAC	280	278	0.72	-4.44	20.69
Super Group Ltd	SPG	2278	2258	0.89	0.57	-23.43
Stor-Age Prop REIT Ltd	SSS	1490	1508	-1.19	-2.61	14.09
Southern Sun LTD	SSU	825	825	0.00	1.85	57.14
Sun International Ltd	SUI	4375	4409	-0.77	-4.85	6.71
Tharisa plc	THA	1675	1690	-0.89	-5.37	10.85
Tsogo Sun Gaming Ltd	TSG	1217	1237	-1.62	-2.25	-0.65
Vukile Property Fund Ltd	VKE	1829	1793	2.01	0.83	29.53
Wilson Bayly Hlm-Ovc Ltd	WBO	20755	21147	-1.85	-4.19	59.58

10-YEAR BOND YIELD | SELECTED ITEMS (Basis Point Change)

REGION	YIELD	1D	1M	1Y
United States	4.33%	-10	30	-
United Kingdom	4.50%	-6	29	23
Germany	2.44%	4	19	-21
Japan	0.98%	3	7	-
South African 10Y	9.18%	-20	-5	-113

SOUTH AFRICAN 10-YEAR

2023 vs 2024 to date

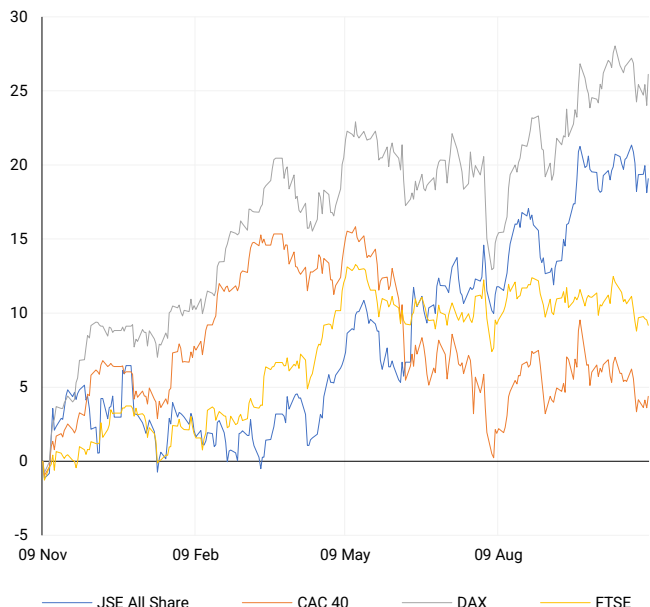


GLOBAL INTEREST RATES | SELECTED ITEMS

REGION	DATE CHANGED	CURRENT RATE
United States	Nov '24	4.50%-4.75%
United Kingdom	Nov '24	4.75%
European	Oct '24	3.40%
SA Repo Rate	Sep '24	8.00%
SA Prime Rate	Sep '24	11.50%

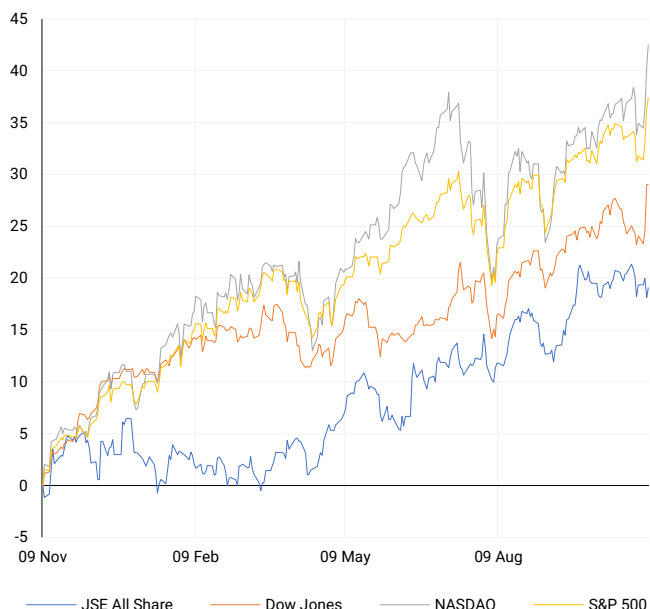
EUROPEAN INDICES

Normalised percentage performances



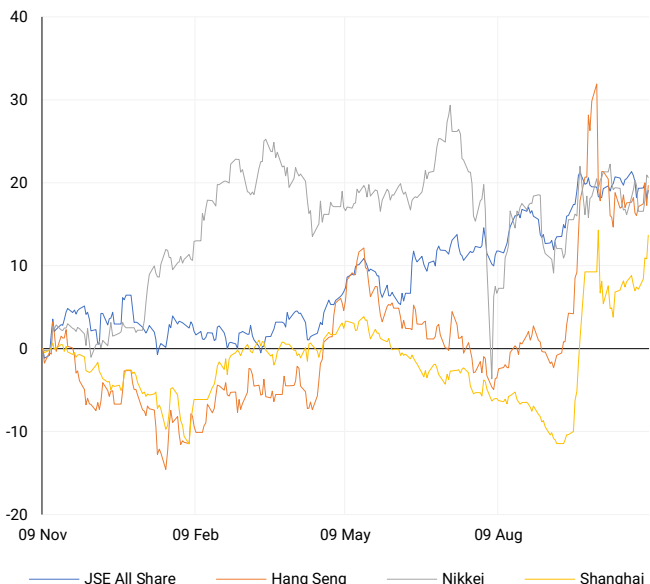
AMERICAN INDICES

Normalised percentage performances



ASIAN INDICES

Normalised percentage performances

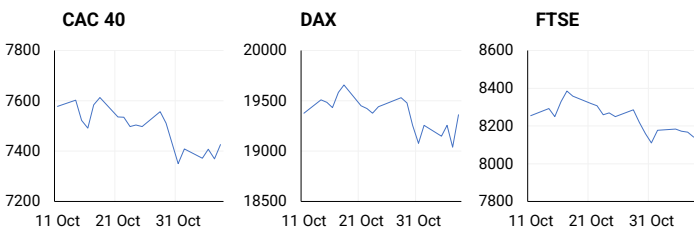


EUROPEAN MARKET SUMMARY

SELECTED ITEMS

European markets closed higher on Thursday, with attention on the Bank of England's recent policy move. The BOE cut interest rates by 25 basis points to 4.75%, marking its second rate cut this year. Germany's DAX also rose, following news that Chancellor Olaf Scholz dismissed Finance Minister Christian Lindner, ending the three-party coalition. Scholz announced a confidence vote in the German parliament scheduled for January 15, which could lead to snap elections.

EUROPEAN INDICES	CLOSE	PREVIOUS	1D%	5D%	1M%	YTD%
CAC 40	7425.60	7369.61	0.76	1.02	-1.99	-1.56
DAX 30	19362.52	19039.31	1.70	1.49	1.35	15.59
Eurostoxx 50	4848.00	4845.80	0.05	0.44	-2.54	7.22
FTSE	8140.74	8166.68	-0.32	0.38	-1.96	5.27



AMERICAN MARKET SUMMARY

SELECTED ITEMS

U.S. stocks closed higher on Thursday after the Federal Reserve reduced interest rates by 25 basis points, noting easing in the job market and progress toward its 2% inflation target. The rate cut, anticipated by markets, extended a rally driven by Donald Trump's return as U.S. president, with investor optimism focused on potential corporate tax cuts and regulatory rollbacks. The Dow and S&P 500 saw their biggest gains in two years. Investors are now closely watching whether Republicans will gain control of Congress, which could facilitate Trump's policy agenda. Meanwhile, weekly jobless claims rose slightly, indicating stable labour market conditions.

AMERICAN INDICES	CLOSE	PREVIOUS	1D%	5D%	1M%	YTD%
Dow Jones	43729.34	43729.93	0.00	4.71	4.23	16.03
Nasdaq	19269.46	18983.46	1.51	6.49	7.51	28.37
S&P 500	5973.10	5929.04	0.74	4.69	4.87	25.23
US VIX	15.20	16.27	-6.58	-34.37	-32.86	22.09



ASIAN MARKET SUMMARY

SELECTED ITEMS

Asia-Pacific markets rose on Thursday as investors anticipated the conclusion of China's National People's Congress, where fiscal stimulus measures are expected to be announced to bolster the economy. In Japan, household spending for September declined by 1.1%, which was better than the expected 2.1% drop, indicating a slower-than-forecasted decrease in consumer spending.

ASIAN INDICES	CLOSE	PREVIOUS	1D%	5D%	1M%	YTD%
Hang Seng	20953.34	20538.38	2.02	3.13	-9.29	22.91
Nikkei 225	39381.41	39480.67	-0.25	0.77	0.12	17.68
Shanghai	3470.66	3383.81	2.57	5.82	4.02	16.66



COMMODITIES MARKET SUMMARY

SELECTED ITEMS

Gold prices dipped slightly this morning but remained near the \$2,700 mark as traders evaluated the effects of Donald Trump's presidency on U.S. interest rates. Meanwhile, oil prices edged down as concerns about potential disruptions from a Gulf of Mexico hurricane eased, with the market focusing on how Trump's upcoming policies might influence oil supply.

BRENT CRUDE

One-year



COMMODITY	LAST	CLOSE	% CHG	1D%	5D%	YTD%
Brent Crude	75.16	75.53	-0.49	0.49	3.23	-2.01
Gold	2693.66	2706.38	-0.47	1.78	-1.37	31.19
Palladium	1019.81	1027.91	-0.79	-0.30	-8.23	-6.32
Platinum	991.80	998.01	-0.62	1.50	0.41	1.09
Silver	31.72	32.04	-1.00	2.76	-1.90	34.69

PLATINUM

One-year



GOLD

One-year



CURRENCY MARKET SUMMARY

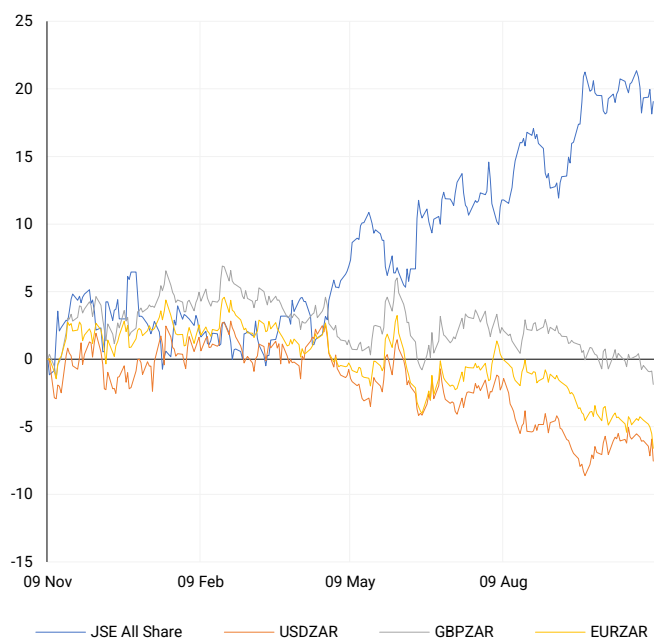
SELECTED ITEMS

South Africa's rand regained some ground on Thursday after a sharp decline in emerging market assets triggered by Donald Trump's U.S. election victory. The U.S. dollar index also fell, reversing nearly half of its post-election rally. Similarly, U.S. bond yields, which had surged on election day, pulled back as the initial market reaction began to ease.

CURRENCY PAIR	LAST	CLOSE	% CHG	1D%	5D%	YTD%
USDZAR	17.38	17.32	0.35	-1.75	-1.58	-5.49
GBPZAR	22.53	22.48	0.23	-0.99	-1.11	-3.52
EURZAR	18.73	18.70	0.19	-1.13	-2.32	-7.39
AUDZAR	11.56	11.56	-0.04	-0.18	-0.20	-7.19
EURUSD	1.08	1.08	-0.21	0.69	-0.74	-2.13
USDJPY	152.69	152.94	-0.17	-1.10	0.59	8.44
GBPUSD	1.30	1.30	-0.17	0.83	0.68	2.00
USDCHF	0.87	0.87	0.06	-0.45	1.01	3.68

CURRENCY PAIRS vs JSE ALL SHARE

Normalised percentage performances



USDZAR

One-year



EURUSD

One-year



SOURCES | JSE, IRESS, MONEYWEB, CNBC, BBC, CNN

Disclaimer: This note is prepared for Sanlam Private Wealth (Pty) Ltd, by K2013143132 (Pty) Ltd trading as ThompsonGreen. ThompsonGreen is an independent company contracted to Sanlam Private Wealth (Pty) Ltd. The views expressed in this note are those of ThompsonGreen and/or its analysts and not necessarily the views of Sanlam Private Wealth (Pty) Ltd, Sanlam or any officer or agent thereof. K2013143132 (Pty) Ltd trading as ThompsonGreen is a research house and not a registered broker, financial adviser or financial service provider. Our editors and customer services teams also do not give personal investment advice. The information in this document is general advice only and may not be appropriate to your particular investment objectives, financial situation or particular needs. Before investing, or if you are in any doubt about your personal situation, you should seek professional advice from a stockbroker or independent financial adviser authorised by the Financial Sector Conduct Authority.