

GLOBAL OVERVIEW | SELECTED INDICES

SOUTH AFRICAN INDICES						
	CLOSE	PREVIOUS	1D%	5D%	1M%	YTD%
All Share	85124.52	85998.22	-1.02	-1.25	-0.43	10.70
Top 40	76969.90	77880.84	-1.17	-1.44	-0.65	9.19
Financial 15	21130.09	21265.10	-0.63	0.26	0.96	18.22
Industrial 25	115311.68	115911.03	-0.52	-1.72	-2.74	11.18
Resource 10	57811.24	59494.62	-2.83	-3.22	1.90	0.48
Mid Cap	91438.33	91972.18	-0.58	-0.99	1.28	13.71
Small Cap	87937.59	88153.36	-0.24	-0.44	0.09	21.30
Banks	13154.83	13248.30	-0.71	0.30	0.93	20.15
Retailers	7746.01	7564.33	2.40	-1.32	0.61	24.26
Property (J253) - TR	2340.88	2352.01	-0.47	-0.99	-1.34	25.60

AMERICAN INDICES						
	CLOSE	PREVIOUS	1D%	5D%	1M%	YTD%
Dow Jones	43988.99	43729.34	0.59	4.61	4.54	16.71
Nasdaq	19286.78	19269.46	0.09	5.74	6.07	28.48
S&P 500	5995.54	5973.10	0.38	4.66	4.25	25.70
US VIX	14.94	15.20	-1.71	-31.72	-30.25	20.00

EUROPEAN INDICES						
	CLOSE	PREVIOUS	1D%	5D%	1M%	YTD%
CAC 40	7338.67	7425.60	-1.17	-0.95	-2.43	-2.71
DAX 30	19215.48	19362.52	-0.76	-0.21	0.78	14.71
Eurostoxx 50	4802.15	4848.00	-0.95	-1.56	-2.91	6.20
FTSE	8072.39	8140.74	-0.84	-1.28	-1.44	4.39

ASIAN INDICES						
	CLOSE	PREVIOUS	1D%	5D%	1M%	YTD%
Hang Seng	20728.19	20953.34	-1.07	1.08	-0.95	21.59
Nikkei 225	39500.37	39381.41	0.30	3.80	1.45	18.04
Shanghai	3452.30	3470.66	-0.53	5.51	-1.07	16.05

EARLY MORNING MARKETS						
	LAST	CLOSE	% CHG	1D%	5D%	YTD%
TENCENT	411.60	420.80	-2.19	-1.77	0.38	45.00
BHP AUS	4168.00	4340.00	-3.96	0.95	1.45	-9.21

NOTE: 5D% and 1M% are rolling percentage moves

INTERNATIONAL ECONOMIC CALENDAR | SELECTED EVENTS

TIME	AREA	TODAY'S EVENTS & RELEASES	PERIOD	EXP.	PREV.
--	CN	Vehicle Sales y/y	Oct	-2.0%	-1.7%
--	--	--	--	--	--
--	--	--	--	--	--
--	--	--	--	--	--
--	--	--	--	--	--

TIME	AREA	PREVIOUS SESSION'S RELEASES	PERIOD	EXP.	ACT.
17:00	US	Michigan Consumer Sentiment Prel	Nov	70.6	73.0
17:00	US	Michigan Inflation Expectations Prel	Nov	2.7%	2.6%
--	--	--	--	--	--
--	--	--	--	--	--
--	--	--	--	--	--

JSE ALL SHARE | BEST AND WORST ONE-DAY PERFORMERS

BEST ONE-DAY % PERFORMERS						
	CODE	CLOSE	1D%	5D%	YTD%	
The Foschini Group Limited	TFG	15423	5.03	0.57	39.00	
Mr Price Group Ltd	MRP	25850	3.74	0.22	64.85	
PSG Fin Services Ltd	KST	1885	3.29	1.34	22.80	
Woolworths Holdings Ltd	WHL	6480	2.47	-1.85	-10.25	
Life Healthc Grp Hldgs Ltd	LHC	1683	2.43	4.28	-8.38	
Wilson Bayly Hlm-Ovc Ltd	WBO	21241	2.34	-0.78	63.32	

WORST ONE-DAY % PERFORMERS						
	CODE	CLOSE	1D%	5D%	YTD%	
Sasol Limited	SOL	9970	-6.05	-2.57	-46.19	
African Rainbow Min Ltd	ARI	16905	-5.91	-5.57	-15.48	
Impala Platinum Hlgs Ltd	IMP	11300	-5.72	-4.99	23.81	
Compagnie Fin Richemont	CFR	241794	-4.99	-5.23	-5.83	
Kumba Iron Ore Ltd	KIO	34182	-4.89	-0.24	-44.40	

DIVIDEND DATA

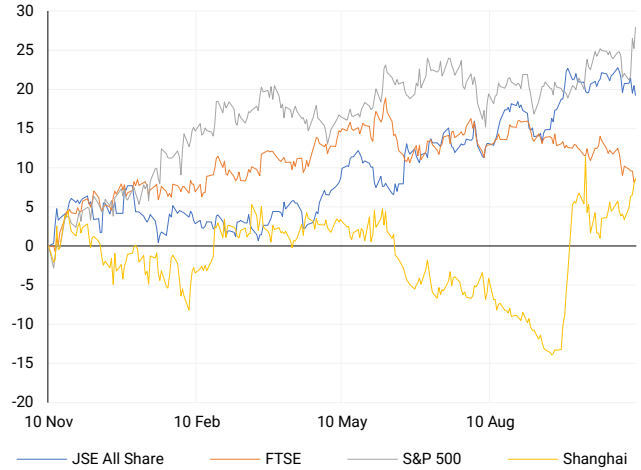
COMPANY	CODE	EXPECTED DIVIDEND	COMPANY	CODE	EXPECTED DIVIDEND
Netcare	NTCP	485 ZARc	--	--	--
Spear REIT	SEA	39 ZARc	--	--	--
Remgro	REM	184 ZARc	--	--	--
--	--	--	--	--	--
--	--	--	--	--	--

SOURCES | JSE, IRESS, MONEYWEB, CNBC, BBC, CNN

PLEASE SEE THE BOTTOM OF THE LAST PAGE FOR THE FULL DISCLAIMER

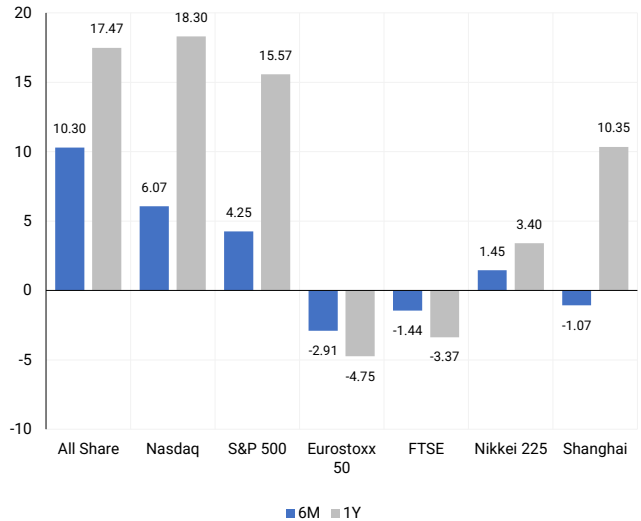
INTERNATIONAL INDICES

Normalised percentage performances - In rand terms



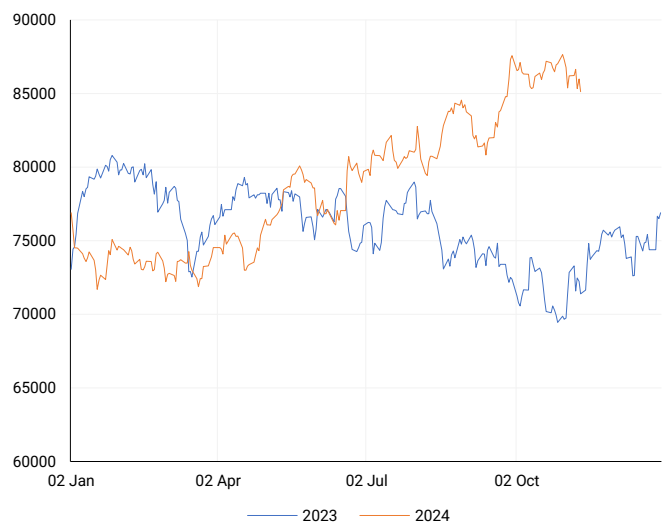
INTERNATIONAL INDICES

6-month & 1-year percentage performances



JSE ALL SHARE INDEX

2023 v 2024 to date



Last date to trade Tue, 12 November

LOCAL EQUITIES | JSE LARGE CAP COMPANIES (Cents Per Share)

COMPANY	CLOSE	PREVIOUS	1D%	5D%	1M%	YTD%
Absa Group Limited	16876	16990	-0.67	-0.11	0.30	3.08
Anglo American plc	53622	55832	-3.96	-2.40	2.04	13.25
Anglo American Plat Ltd	67177	69578	-3.45	-4.26	7.04	-30.31
Anglogold Ashanti Ltd	47935	48228	-0.61	-2.25	7.35	35.64
Anheuser-Busch InBev SA NV	100725	100979	-0.25	-4.18	-10.79	-16.07
BHP Group Limited	48600	50250	-3.28	-1.40	-5.18	-23.27
BID Corporation Ltd	43691	43301	0.90	2.87	-0.92	2.40
British American Tob plc	61900	61953	-0.09	0.55	0.24	14.31
Compagnie Fin Richemont	241794	254500	-4.99	-5.23	-9.15	-5.83
Capitec Bank Hldgs Ltd	329537	330995	-0.44	1.82	7.29	62.63
Discovery Ltd	18336	18347	-0.06	1.30	6.92	27.62
Firststrand Ltd	7882	7897	-0.19	1.72	-3.78	7.22
Gold Fields Ltd	27729	28172	-1.57	-4.39	4.01	-0.18
Glencore plc	8989	9418	-4.56	-2.94	-6.37	-19.49
Impala Platinum Hlgs Ltd	11300	11986	-5.72	-4.99	8.36	23.81
Kumba Iron Ore Ltd	34182	35939	-4.89	-0.24	-8.27	-44.40
Mondi plc	27500	27900	-1.43	-4.11	-15.09	-24.24
MTN Group Ltd	8427	8385	0.50	-3.60	-2.27	-27.04
Naspers Ltd -N-	408323	414328	-1.45	-3.16	-4.41	30.54
Prosus N.V.	72574	74088	-2.04	-3.28	-6.42	29.51
South32 Limited	4330	4460	-2.91	1.10	1.50	2.63
Standard Bank Group Ltd	24155	24460	-1.25	-1.58	1.50	16.07
Shoprite Holdings Ltd	31452	31301	0.48	3.40	9.00	14.35
Sanlam Limited	8879	8853	0.29	1.16	3.28	21.96
Sasol Limited	9970	10612	-6.05	-2.57	-18.39	-46.19
Sibanye Stillwater Ltd	2028	2109	-3.84	-2.73	4.97	-18.55
Vodacom Group Ltd	10450	10370	0.77	-4.13	-1.34	-1.42

SOUTH AFRICAN MARKET SUMMARY

SELECTED ITEMS

On Friday, the Top 40 index on the Johannesburg Stock Exchange dropped by 1.17%, closing at 76,969 points, influenced in part by retail sector news. The All Share index also declined, finishing 1.02% lower at 85,124 points. On Saturday, South Africa's border authority announced a partial reopening of its main crossing with Mozambique, where recent protests following last month's contested election have raised security concerns. Opposition supporters in Mozambique are protesting against what they allege is a fraudulent victory by Frelimo, the party that has governed the country since 1975.

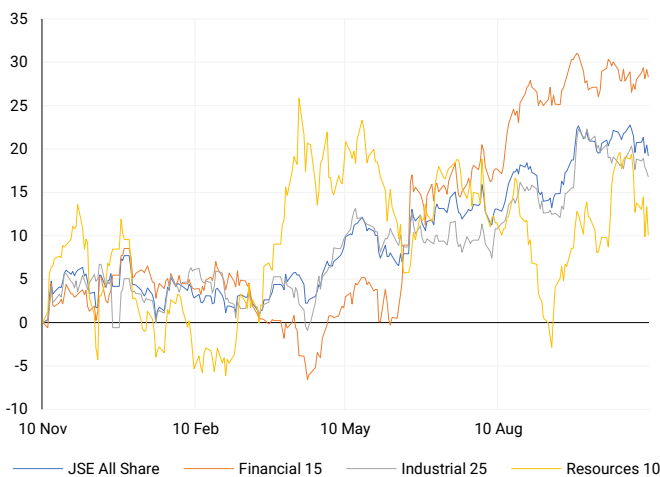
JSE ALL SHARE

One-year



LOCAL INDICES

Normalised percentage performances



LOCAL SENS ANNOUNCEMENTS

SELECTED RELEASE

THE FOSCHINI GROUP LIMITED – Summary of the Interim Results

The company reported a record gross profit of R12.8 billion, up by 2.5%, with an improved gross margin. While overall group revenue slightly declined by 1.4% to R28 billion, online sales grew significantly by 9.9%, driven by a 47.9% increase in South Africa. Sales fell in key regions, with TFG Africa down by 0.1%, TFG London by 8.2%, and TFG Australia by 2.4%. Credit sales contributed 26.8% to TFG Africa's total sales. Operating profit decreased by 3.4%, and both basic and headline earnings per share dropped by around 5%. An interim dividend of 160 cents per share was declared, up 6.7% from the previous year.

TFG | 5.03% OPEN | 14600c HIGH | 15625c LOW | 14000c CLOSE | 15423c TIME | 09:00

SEPHAKU HOLDINGS LIMITED – Unaudited Condensed Consolidated Interim Financial Results

The group reported consolidated revenue of R613.8 million, slightly down from R626.6 million in H1 2024, but net profit after tax rose significantly to R32.6 million. Basic and headline earnings per share almost doubled compared to the previous period, and net asset value per share increased to 538.66 cents. For Métier, EBITDA and EBIT margins remained stable, with slight declines in profit. SepCem saw improved financial performance, with revenue up to R1.3 billion, higher margins, and a return to profit after tax of R5.0 million, reversing a previous loss. No dividends were declared for this period.

SEP | 6.91% OPEN | 191c HIGH | 201c LOW | 191c CLOSE | 201c TIME | 14:00

ISA HOLDINGS LIMITED – Unaudited Condensed Results

For the six months ending 31 August 2024, turnover decreased by 8% to R45.1 million. However, profit before other income and expenses rose by 8%, reaching R24.9 million, and profit after tax increased by 10% to R13.2 million. Earnings per share also improved by 10% to 8.5 cents. Total assets grew by 5%, but cash and cash equivalents dropped by 25%. Equity rose slightly by 2%, while total liabilities increased by 14%. Notably, no dividends were declared, marking a 100% drop compared to the previous period. The net asset value per share increased marginally to 37.6 cents.

ISA | -11.11% OPEN | 225c HIGH | 234c LOW | 200c CLOSE | 200c TIME | 15:25

HUGE GROUP LIMITED – Unaudited condensed consolidated results

For the six months ended 31 August 2024, Huge Group reported a net asset value per share of 983.73 cents, up from 960.31 cents in the same period last year. Operating profit increased to R33.4 million compared to R28.4 million in August 2023. Headline earnings per share rose to 19.38 cents, reflecting an improvement from 16.45 cents in the previous period. No dividends were declared or paid during this period.

HUG | 0.00% OPEN | 200c HIGH | 200c LOW | 200c CLOSE | 200c TIME | 13:45

EXPECTED COMPANY REPORTING SCHEDULE

COMPANY	CODE	RELEASE	DATE
MultiChoice	MCG	Interim	12 Nov '24
Vodacom	VOD	Interim	14 Nov '24
Reinet	RNI	Interim	15 Nov '24
Life Healthcare	LHC	Final	15 Nov '24
We Buy Cars	WBC	Final	18 Nov '24

BANK AND OTHER SELECTE PREFERENCE SHARES

COMPANY	CODE	CLOSE	CLEAN YIELD	NEXT LDT (Est.)
Investec Limited	INPR	9462	11.24	Thu, 28 Nov '24
Standard Bank	SBPP	9384	11.15	Wed, 02 Apr '25
Absa	ABSP	85500	11.48	Wed, 16 Apr '25
Capitec	CPIP	10200	9.69	Tue, 18 Mar '25
Grindrod	GNDP	9500	12.22	Wed, 02 Apr '25
Netcare	NTCP	8610	11.82	Thu, 31 Oct '24
Discovery	DSBP	10001	11.91	Tue, 18 Mar '25

LOCAL EQUITIES | JSE MID CAP COMPANIES (Cents Per Share)

COMPANY	CODE	CLOSE	PREVIOUS	1D%	1M%	YTD%
Aspen Pharmacare Hldgs Ltd	APN	17671	17957	-1.59	-8.85	-13.16
African Rainbow Min Ltd	ARI	16905	17966	-5.91	-5.55	-15.48
AVI Ltd	AVI	11396	11357	0.34	3.70	38.86
Barloworld Ltd	BAW	8397	8515	-1.39	-1.36	6.29
Bidvest Ltd	BVT	28287	28500	-0.75	1.76	12.12
Bytes Technology Grp PLC	BYI	10328	10227	0.99	-11.07	-27.88
Capital&Counties Prop plc	CCO	3061	3003	1.93	-5.29	-5.82
Clicks Group Ltd	CLS	38833	38751	0.21	3.46	19.23
Dis-Chem Pharmacies Ltd	DCP	3800	3786	0.37	3.23	23.82
Exxaro Resources Ltd	EXX	16750	16592	0.95	-0.59	-18.08
Fortress Real Est INV B	FFB	1894	1889	0.26	-4.49	31.89
Growthpoint Prop Ltd	GRT	1296	1315	-1.44	-6.70	10.96
Harmony GM Co Ltd	HAR	17743	18036	-1.62	9.75	48.37
Hammerson plc	HMN	6627	6666	-0.59	-6.66	874.56
Investec Ltd	INL	13917	14008	-0.65	5.21	10.81
Investec plc	INP	13976	14035	-0.42	6.14	10.96
Italtile Ltd	ITE	1370	1375	-0.36	8.73	22.32
Life Healthc Grp Hldgs Ltd	LHC	1683	1643	2.43	0.18	-8.38
MultiChoice Group Ltd	MCG	11030	11100	-0.63	0.27	36.14
Montauk Renewables Inc	MKR	9529	9900	-3.75	-4.71	-44.60
Mr Price Group Ltd	MRP	25850	24917	3.74	0.88	64.85
Momentum Met Hldgs Ltd	MTM	2945	2950	-0.17	-0.94	34.54
Ninety One Plc	N91	3697	3803	-2.79	-13.20	-14.26
Nedbank Group Ltd	NED	29330	29816	-1.63	-0.51	35.64
Northam Platinum Hldgs Ltd	NPH	12234	12745	-4.01	5.12	-12.88
NEPI Rockcastle N.V.	NRP	13877	13905	-0.20	-2.08	9.80
Netcare Limited	NTC	1500	1494	0.40	-1.64	5.34
Ninety One Limited	NY1	3744	3823	-2.07	-12.91	-12.87
Old Mutual Limited	OMU	1265	1270	-0.39	-1.09	-3.14
OUTsurance Group Ltd	OUT	6080	6097	-0.28	1.67	44.08
Pick n Pay Stores Ltd	PIK	2577	2567	0.39	-9.74	10.74
Pepkor Holdings Ltd	PPH	2250	2233	0.76	-4.98	14.62
Quilter Plc	QLT	3262	3280	-0.55	5.77	34.35
Redefine Properties Ltd	RDF	478	482	-0.83	-3.24	24.16
Remgro Ltd	REM	15097	15402	-1.98	-3.14	-7.08
Resilient REIT Limited	RES	5565	5603	-0.68	-1.87	25.65
Reinet Investments S.C.A	RNI	48593	49033	-0.90	5.46	4.23
Sappi Ltd	SAP	5312	5410	-1.81	10.18	20.18
Santam Limited	SNT	37388	37221	0.45	1.65	30.47
The Spar Group Ltd	SPP	12921	12810	0.87	-1.37	9.59
Sirius Real Estate Ltd	SRE	2001	1996	0.25	-5.88	-9.66
Tiger Brands Ltd	TBS	23872	23818	0.23	-0.53	18.60
Transaction Capital Ltd	TCP	291	294	-1.02	-7.32	-63.53
The Foschini Group Limited	TFG	15423	14684	5.03	2.61	39.00
Thungela Resources Ltd	TGA	13314	13369	-0.41	9.95	-13.43
Telkom SA SOC Ltd	TKG	2686	2695	-0.33	-1.21	-9.68
Truworths Int Ltd	TRU	10504	10299	1.99	3.17	41.28
Woolworths Holdings Ltd	WHL	6480	6324	2.47	-1.77	-10.25
Zeda Limited	ZZD	1475	1425	3.51	6.50	15.69

LOCAL EQUITIES | JSE SMALL CAP COMPANIES (Cents Per Share)

COMPANY	CODE	CLOSE	PREVIOUS	1D%	1M%	YTD%
ArcelorMittal SA Limited	ACL	132	132	0.00	-20.00	-19.51
AdvTECH Ltd	ADH	3189	3184	0.16	0.57	29.95
Altron Limited A	AEL	2050	2021	1.43	10.81	100.00
AECI Limited	AFE	9739	9759	-0.20	-2.79	-11.21
Alexander Forbes Grp Hldgs	AFH	738	750	-1.60	3.94	11.82
Afrimat Limited	AFT	6612	6670	-0.87	1.16	4.95
African Rainbow Cap Inv	AIL	754	764	-1.31	5.01	54.19
Adcock Ingram Hldgs Ltd	AIP	6891	6916	-0.36	-0.32	14.66
Astral Foods Ltd	ARL	16953	17031	-0.46	-6.69	15.66
Attacq Limited	ATT	1310	1322	-0.91	3.97	42.08
Brait PLC	BAT	172	169	1.78	14.67	-5.49
Blue Label Telecoms Ltd	BLU	543	547	-0.73	4.42	39.95
Burstone Group	BTN	946	956	-1.05	-2.37	18.25
Coronation Fund Mngrs Ld	CML	3950	3971	-0.53	1.88	26.77
Curro Holdings Limited	COH	1321	1319	0.15	4.84	13.39
Cashbuild Ltd	CSB	18650	18607	0.23	11.01	11.72
DRD Gold Ltd	DRD	1916	1940	-1.24	12.38	21.50
Datalec Ltd	DTC	3950	3950	0.00	5.00	-2.47
Emira Property Fund Ltd	EMI	1103	1120	-1.52	-1.43	29.01
Equites Prop Fund Ltd	EQU	1427	1420	0.49	0.92	2.29
Famous Brands Ltd	FBR	6331	6327	0.06	-1.08	9.29
Fairvest Limited B	FTB	457	463	-1.30	2.24	32.85
Grindrod Ltd	GND	1354	1350	0.30	-9.73	18.15
Hosken Cons Inv Ltd	HCI	19600	19700	-0.51	11.36	-3.26
Hudaco Industries Ltd	HDC	20244	20153	0.45	6.03	26.03
Hyprop Inv Ltd	HYP	4094	4126	-0.78	-7.02	31.60
JSE Ltd	JSE	11998	12169	-1.41	-4.02	29.79
KAP Industrial Hldgs Ltd	KAP	340	343	-0.87	1.19	29.77
Karooooo Ltd	KRO	69500	73000	-4.79	1.02	46.32
PSG Konsult Limited	KST	1885	1825	3.29	2.06	22.80
Libstar Holdings Ltd	LBR	442	450	-1.78	7.80	26.29
Lighthouse Properties plc	LTE	778	785	-0.89	-2.75	5.85
Industrials REIT Limited	MLI	23	23.5	-2.13	21.05	3185.71
MAS P.L.C	MSP	1820	1822	-0.11	2.82	5.14
Metair Investments Ltd	MTA	1101	1138	-3.25	-13.98	-37.97
Motus Holdings Ltd	MTH	11761	11815	-0.46	3.18	15.87
Murray & Roberts Hldgs	MUR	144	140	2.86	-48.20	-3.36
Oceana Group Ltd	OCE	6831	6887	-0.81	-0.50	-3.34
Omnia Holdings Ltd	OMN	6620	6680	-0.90	1.27	1.27
Pan African Resource plc	PAN	790	815	-3.07	1.54	93.15
PPC Limited	PPC	415	410	1.22	7.79	4.01
Raubex Group Ltd	RBX	4750	4779	-0.61	-8.60	71.36
RFG Holdings Limited	RFG	1702	1670	1.92	4.74	26.07
Reunert Ltd	RLO	8008	7962	0.58	0.65	33.60
SA Corp Real Estate Ltd	SAC	276	280	-1.43	-3.50	18.97
Super Group Ltd	SPG	2260	2278	-0.79	-1.74	-24.03
Stor-Age Prop REIT Ltd	SSS	1495	1490	0.34	-2.29	14.47
Southern Sun LTD	SSU	830	825	0.61	1.97	58.10
Sun International Ltd	SUI	4371	4375	-0.09	-4.08	6.61
Tharisa plc	THA	1659	1675	-0.96	-1.72	9.79
Tsogo Sun Gaming Ltd	TSG	1209	1217	-0.66	-1.79	-1.31
Vukile Property Fund Ltd	VKE	1843	1829	0.77	1.43	30.52
Wilson Bayly Hlm-Ovc Ltd	WBO	21241	20755	2.34	-2.12	63.32

10-YEAR BOND YIELD | SELECTED ITEMS (Basis Point Change)

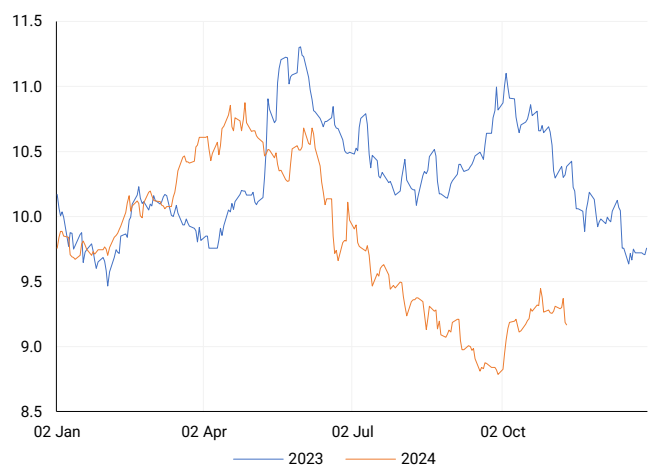
REGION	YIELD	1D	1M	1Y
United States	4.30%	-2	24	-
United Kingdom	4.43%	-6	22	10
Germany	2.36%	-8	11	-35
Japan	0.99%	0	5	-
South African 10Y	9.16%	-3	-2	-119

GLOBAL INTEREST RATES | SELECTED ITEMS

REGION	DATE CHANGED	CURRENT RATE
United States	Nov '24	4.50%-4.75%
United Kingdom	Nov '24	4.75%
European	Oct '24	3.40%
SA Repo Rate	Sep '24	8.00%
SA Prime Rate	Sep '24	11.50%

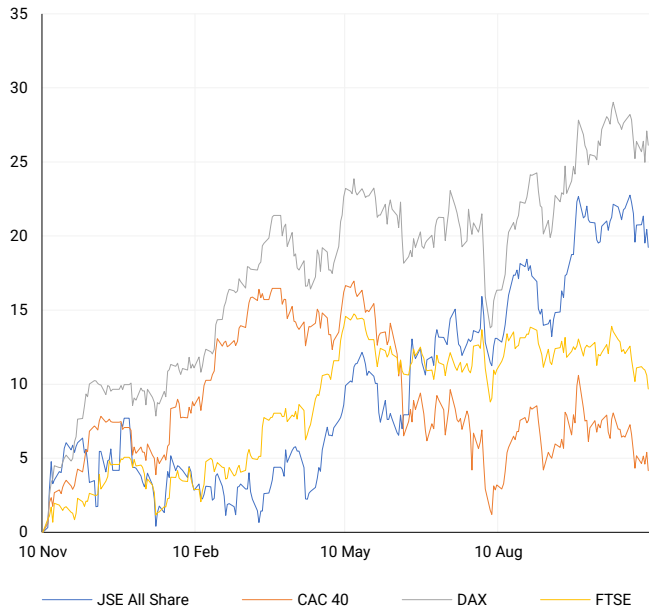
SOUTH AFRICAN 10-YEAR

2023 vs 2024 to date



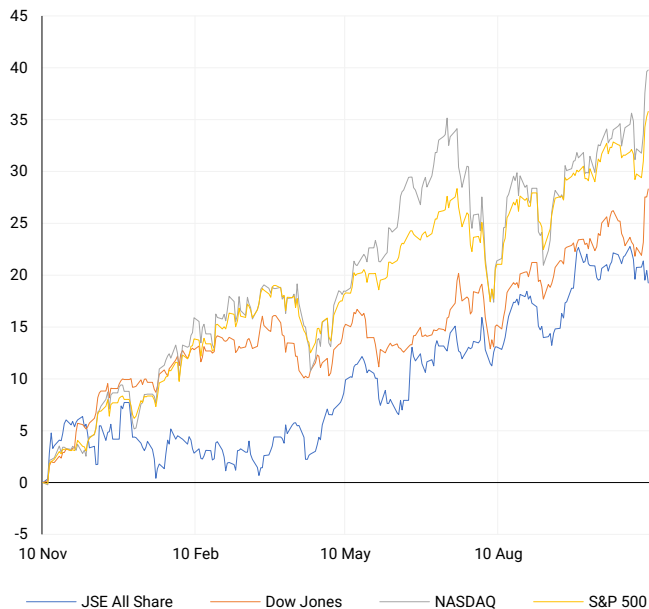
EUROPEAN INDICES

Normalised percentage performances



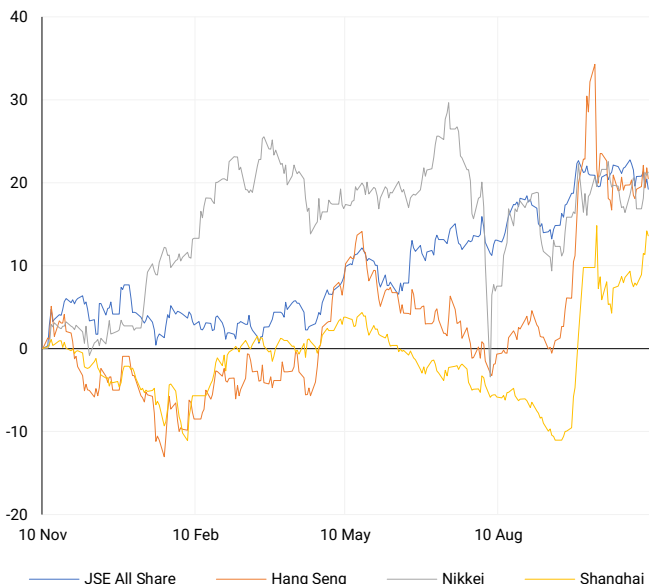
AMERICAN INDICES

Normalised percentage performances



ASIAN INDICES

Normalised percentage performances

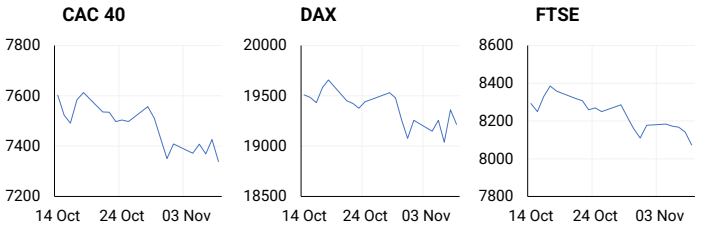


EUROPEAN MARKET SUMMARY

SELECTED ITEMS

European markets ended last week on a down note as investors reacted to corporate earnings and the Bank of England's quarter-point rate cut. Germany's DAX index declined, reversing previous gains, following political turmoil. Chancellor Olaf Scholz dismissed Finance Minister Christian Lindner, prompting a reshuffle that effectively ended the three-way coalition government. The shake-up has heightened the risk of a no-confidence vote and potential early elections, although Scholz indicated he would not call for a confidence vote until mid-January.

EUROPEAN INDICES	CLOSE	PREVIOUS	1D%	5D%	1M%	YTD%
CAC 40	7338.67	7425.60	-1.17	-0.95	-2.43	-2.71
DAX 30	19215.48	19362.52	-0.76	-0.21	0.78	14.71
Eurostoxx 50	4802.15	4848.00	-0.95	-1.56	-2.91	6.20
FTSE	8072.39	8140.74	-0.84	-1.28	-1.44	4.39



AMERICAN MARKET SUMMARY

SELECTED ITEMS

The S&P 500 briefly surpassed 6,000 on Friday, achieving its biggest weekly gain in a year, driven by optimism around Donald Trump's election win and a potential Republican control of Congress. An expected interest rate cut by the Federal Reserve and hopes for lower taxes and deregulation fuelled market gains, with Nasdaq hitting record highs. U.S. consumer sentiment also reached a seven-month peak, boosted by increased optimism among Republicans.

AMERICAN INDICES	CLOSE	PREVIOUS	1D%	5D%	1M%	YTD%
Dow Jones	43988.99	43729.34	0.59	4.61	4.54	16.71
Nasdaq	19286.78	19269.46	0.09	5.74	6.07	28.48
S&P 500	5995.54	5973.10	0.38	4.66	4.25	25.70
US VIX	14.94	15.20	-1.71	-31.72	-30.25	20.00



ASIAN MARKET SUMMARY

SELECTED ITEMS

Asia-Pacific markets declined this morning after China's new \$1.4 trillion stimulus package fell short of expectations, raising concerns about its economic recovery. October's inflation rate dropped to 0.3%, the lowest in four months, missing forecasts. Analysts are sceptical about the impact of the measures, while the upcoming Singles' Day sales will serve as a key indicator of consumer spending in China.

ASIAN INDICES	CLOSE	PREVIOUS	1D%	5D%	1M%	YTD%
Hang Seng	20728.19	20953.34	-1.07	1.08	-0.95	21.59
Nikkei 225	39500.37	39381.41	0.30	3.80	1.45	18.04
Shanghai	3452.30	3470.66	-0.53	5.51	-1.07	16.05



COMMODITIES MARKET SUMMARY

SELECTED ITEMS

Gold prices saw their biggest weekly drop in over five months on Friday, driven by a stronger dollar and changing expectations around U.S. interest rates after Donald Trump's election win. Oil prices also fell over 2% on Friday, as fears of prolonged supply disruptions from a Gulf hurricane eased and China's new economic stimulus measures underwhelmed traders.

BRENT CRUDE

One-year



COMMODITY	LAST	CLOSE	% CHG	1D%	5D%	YTD%
Brent Crude	73.55	73.97	-0.57	-2.07	1.45	-4.03
Gold	2670.61	2684.64	-0.52	-0.80	-1.89	30.13
Palladium	999.52	987.50	1.22	-3.93	-10.66	-10.00
Platinum	978.05	967.90	1.05	-3.02	-2.76	-1.96
Silver	31.20	31.30	-0.32	-2.31	-3.54	31.58

PLATINUM

One-year



GOLD

One-year



CURRENCY MARKET SUMMARY

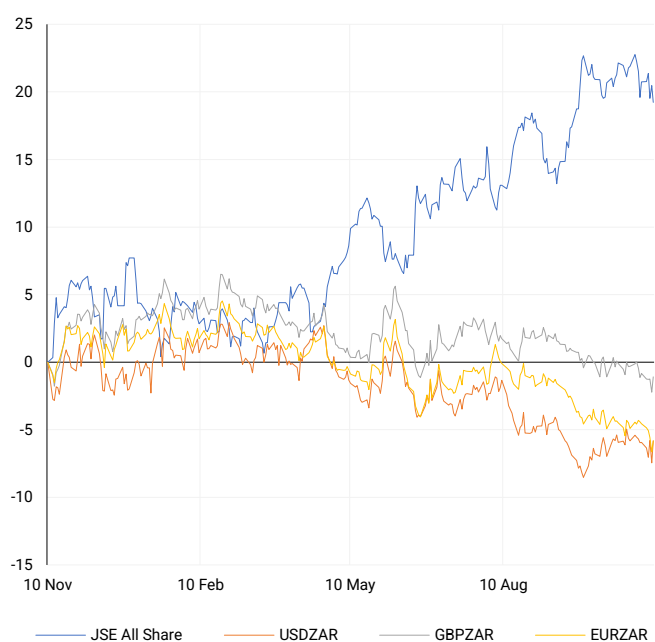
SELECTED ITEMS

The South African rand weakened on Friday as a volatile week, marked by Donald Trump's U.S. election victory, came to an end. Meanwhile, the dollar held steady this morning as markets awaited U.S. inflation data and key Federal Reserve comments. The Chinese yuan remained subdued following disappointment over Beijing's latest stimulus package.

CURRENCY PAIR	LAST	CLOSE	% CHG	1D%	5D%	YTD%
USDZAR	17.62	17.63	0.00	1.77	0.13	-3.82
GBPZAR	22.75	22.73	0.08	1.15	-0.27	-2.41
EURZAR	18.88	18.86	0.11	0.87	-1.33	-6.58
AUDZAR	11.62	11.61	0.07	0.45	-0.22	-6.77
EURUSD	1.07	1.07	0.01	-0.85	-1.55	-2.96
USDJPY	153.56	152.71	0.56	-0.15	0.30	8.27
GBPUSD	1.29	1.29	-0.05	-0.56	-0.45	1.42
USDCHF	0.88	0.88	0.15	0.40	0.99	4.09

CURRENCY PAIRS vs JSE ALL SHARE

Normalised percentage performances



USDZAR

One-year



EURUSD

One-year



SOURCES | JSE, IRESS, MONEYWEB, CNBC, BBC, CNN

Disclaimer: This note is prepared for Sanlam Private Wealth (Pty) Ltd, by K2013143132 (Pty) Ltd trading as ThompsonGreen. ThompsonGreen is an independent company contracted to Sanlam Private Wealth (Pty) Ltd. The views expressed in this note are those of ThompsonGreen and/or its analysts and not necessarily the views of Sanlam Private Wealth (Pty) Ltd, Sanlam or any officer or agent thereof. K2013143132 (Pty) Ltd trading as ThompsonGreen is a research house and not a registered broker, financial adviser or financial service provider. Our editors and customer services teams also do not give personal investment advice. The information in this document is general advice only and may not be appropriate to your particular investment objectives, financial situation or particular needs. Before investing, or if you are in any doubt about your personal situation, you should seek professional advice from a stockbroker or independent financial adviser authorised by the Financial Sector Conduct Authority.