

GLOBAL OVERVIEW | SELECTED INDICES

SOUTH AFRICAN INDICES						
	CLOSE	PREVIOUS	1D%	5D%	1M%	YTD%
All Share	83872.74	83834.31	0.05	-1.47	-2.42	9.08
Top 40	75773.36	75786.33	-0.02	-1.55	-2.63	7.49
Financial 15	20936.18	20996.09	-0.29	-0.92	-2.43	17.14
Industrial 25	115336.52	115967.39	-0.54	0.02	-1.79	11.20
Resource 10	54329.92	53327.38	1.88	-6.02	-4.82	-5.57
Mid Cap	89870.75	89715.68	0.17	-1.71	-1.40	11.76
Small Cap	87592.67	86868.29	0.83	-0.39	-1.58	20.83
Banks	12929.46	13019.12	-0.69	-1.71	-3.25	18.10
Retailers	7721.03	7696.56	0.32	-0.32	-1.33	23.86
Property (J253) - TR	2359.86	2321.33	1.66	0.81	-3.12	26.62

AMERICAN INDICES						
	CLOSE	PREVIOUS	1D%	5D%	1M%	YTD%
Dow Jones	43444.99	43750.86	-0.70	-1.24	1.65	15.27
Nasdaq	18680.12	19107.65	-2.24	-3.15	1.99	24.44
S&P 500	5870.62	5949.17	-1.32	-2.08	0.95	23.08
US VIX	16.14	14.31	12.79	8.03	-21.80	29.64

EUROPEAN INDICES						
	CLOSE	PREVIOUS	1D%	5D%	1M%	YTD%
CAC 40	7269.63	7311.80	-0.58	-0.94	-3.35	-3.63
DAX 30	19210.81	19263.70	-0.27	-0.02	-1.41	14.68
Eurostoxx 50	4795.35	4831.10	-0.74	-0.14	-4.59	6.05
FTSE	8063.61	8071.19	-0.09	-0.11	-2.25	4.27

ASIAN INDICES						
	CLOSE	PREVIOUS	1D%	5D%	1M%	YTD%
Hang Seng	19426.34	19435.81	-0.05	-6.28	-4.39	13.95
Nikkei 225	38642.91	38535.70	0.28	-2.17	-3.18	15.48
Shanghai	3330.73	3379.84	-1.45	-3.52	4.04	11.96

EARLY MORNING MARKETS						
	LAST	CLOSE	% CHG	1D%	5D%	YTD%
TENCENT	408.20	401.00	1.80	-0.59	-4.71	38.18
BHP AUS	4039.00	4007.00	0.80	0.15	-7.67	-16.17

NOTE: 5D% and 1M% are rolling percentage moves

INTERNATIONAL ECONOMIC CALENDAR | SELECTED EVENTS

TIME	AREA	TODAY'S EVENTS & RELEASES	PERIOD	EXP.	PREV.
20:30	EA	ECB President Lagarde Speech	--	--	--
--	--	--	--	--	--
--	--	--	--	--	--
--	--	--	--	--	--
--	--	--	--	--	--

TIME	AREA	PREVIOUS SESSION'S RELEASES	PERIOD	EXP.	ACT.
09:00	GB	GDP m/m	Sep	0.1%	-0.1%
15:30	US	Retail Sales m/m	Oct	0.3%	0.4%
--	--	--	--	--	--
--	--	--	--	--	--
--	--	--	--	--	--

JSE ALL SHARE | BEST AND WORST ONE-DAY PERFORMERS

BEST ONE-DAY % PERFORMERS						
	CODE	CLOSE	1D%	5D%	YTD%	
Barloworld Ltd	BAW	8771	6.05	4.45	11.03	
Thungela Resources Ltd	TGA	13200	5.29	-0.86	-14.17	
Stor-Age Prop REIT Ltd	SSS	1574	3.76	5.28	20.52	
Attacq Limited	ATT	1286	3.54	-1.83	39.48	
AngloGold Ashanti plc	ANG	44076	3.51	-8.05	24.72	
Hyprop Inv Ltd	HYP	4326	3.49	5.67	39.05	

WORST ONE-DAY % PERFORMERS						
	CODE	CLOSE	1D%	5D%	YTD%	
Bytes Technology Grp PLC	BYI	10346	-3.52	0.17	-27.76	
Dis-Chem Pharmacies Ltd	DCP	3764	-3.19	-0.95	22.65	
Italtile Ltd	ITE	1375	-3.17	0.36	22.77	
The Spar Group Ltd	SPP	12598	-2.36	-2.50	6.85	
KAP Limited	KAP	310	-2.21	-8.82	18.32	

DIVIDEND DATA

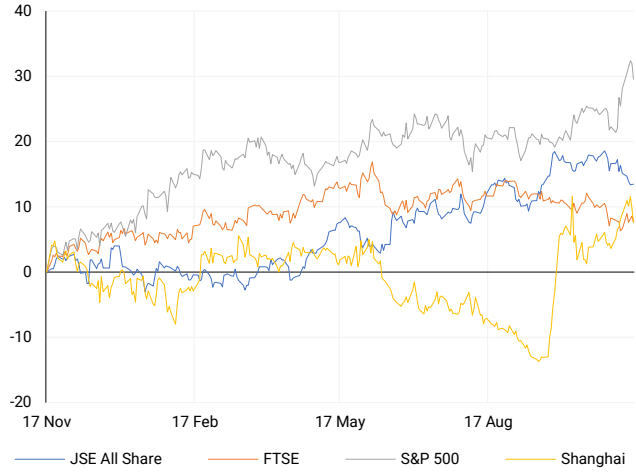
COMPANY	CODE	EXPECTED DIVIDEND	COMPANY	CODE	EXPECTED DIVIDEND
Dis-Chem Pharmacies	DCP	26.9 ZARc	Afrimat	AFT	10 ZARc
Collins Property Group	CPP	50 ZARc	--	--	--
Altron Ltd	AEL	40 ZARc	--	--	--
Exemplar REITail Ltd	EXP	70.2 ZARc	--	--	--
Zeder Investments	ZED	20 ZARc	--	--	--

Last date to trade Tue, 19 November

SOURCES | JSE, IRESS, MONEYWEB, CNBC, BBC, CNN

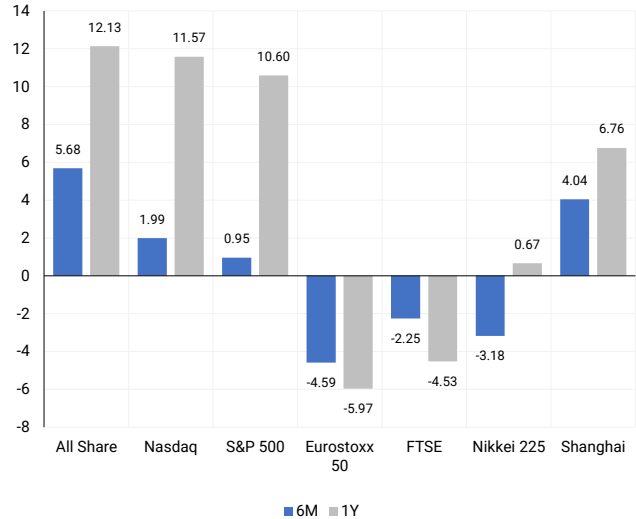
INTERNATIONAL INDICES

Normalised percentage performances - In rand terms



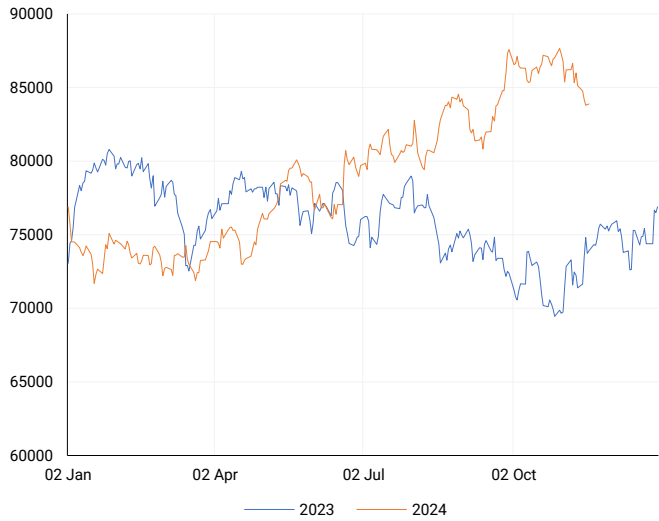
INTERNATIONAL INDICES

6-month & 1-year percentage performances



JSE ALL SHARE INDEX

2023 v 2024 to date



LOCAL EQUITIES | JSE LARGE CAP COMPANIES (Cents Per Share)

COMPANY	CLOSE	PREVIOUS	1D%	5D%	1M%	YTD%
Absa Group Limited	16617	16642	-0.15	-1.53	-2.27	1.50
Anglo American plc	52778	51477	2.53	-1.57	2.75	11.47
Anglo American Plat Ltd	63000	62810	0.30	-6.22	3.28	-34.65
Anglogold Ashanti Ltd	44076	42582	3.51	-8.05	-8.76	24.72
Anheuser-Busch InBev SA NV	102580	103799	-1.17	1.84	-11.95	-14.53
BHP Group Limited	47456	47572	-0.24	-2.35	-7.24	-25.08
BID Corporation Ltd	45863	45883	-0.04	4.97	3.41	7.50
British American Tob plc	65304	64851	0.70	5.50	4.52	20.60
Compagnie Fin Richemont	246600	248281	-0.68	1.99	-5.84	-3.96
Capitec Bank Hldgs Ltd	324978	327500	-0.77	-1.38	-1.06	60.38
Discovery Ltd	19031	19026	0.03	3.79	8.75	32.45
Firststrand Ltd	7625	7665	-0.52	-3.26	-7.60	3.73
Gold Fields Ltd	24840	24427	1.69	-10.42	-10.42	-10.58
Glencore plc	8791	8661	1.50	-2.20	-5.71	-21.26
Impala Platinum Hlgs Ltd	10703	10567	1.29	-5.28	5.38	17.27
Kumba Iron Ore Ltd	33466	33495	-0.09	-2.09	-6.41	-45.56
Mondi plc	26810	26837	-0.10	-2.51	-17.76	-26.14
MTN Group Ltd	8206	8164	0.51	-2.62	-5.29	-28.95
Naspers Ltd -N-	410811	414033	-0.78	0.61	0.20	31.33
Prosus N.V.	72800	73151	-0.48	0.31	-2.10	29.91
South32 Limited	4212	4130	1.99	-2.73	-2.57	-0.17
Standard Bank Group Ltd	23964	24162	-0.82	-0.79	-1.37	15.16
Shoprite Holdings Ltd	30155	30714	-1.82	-4.12	3.98	9.63
Sanlam Limited	8825	8829	-0.05	-0.61	-0.19	21.22
Sasol Limited	9507	9351	1.67	-4.64	-15.27	-48.69
Sibanye Stillwater Ltd	1846	1810	1.99	-8.97	8.59	-25.86
Vodacom Group Ltd	10168	10242	-0.72	-2.70	-5.64	-4.08

SOUTH AFRICAN MARKET SUMMARY

SELECTED ITEMS

On the Johannesburg Stock Exchange, the blue-chip Top 40 index remained flat on Friday, slipping just 0.02% to close at 75,773 points, while the All Share index edged up by 0.05% to 83,872 points. Investors awaited S&P Global's upcoming review of South Africa's sovereign credit rating, anticipated to remain at 'BB-' with a stable outlook. Meanwhile, Barloworld Ltd., valued at approximately R16 billion, is in talks with a consortium that includes Saudi Arabia's Zahid Group for the sale of its African Caterpillar equipment distribution business.

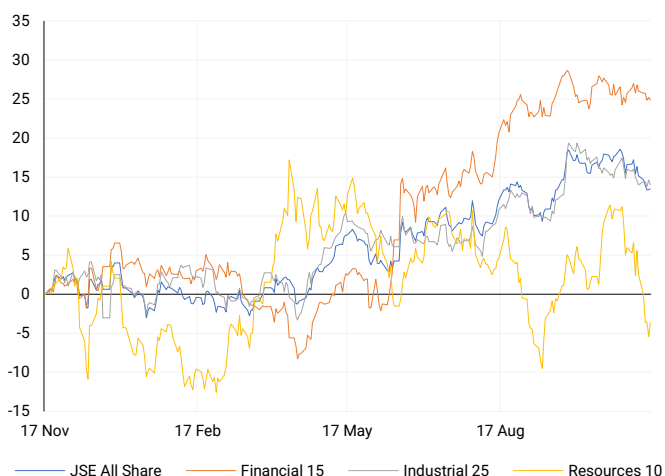
JSE ALL SHARE

One-year



LOCAL INDICES

Normalised percentage performances



LOCAL SENS ANNOUNCEMENTS

SELECTED RELEASE

GOLD FIELDS LIMITED – Operational Update

In the third quarter of 2024, gold production was 510,000 ounces, a rise from 454,000 ounces in the previous quarter but lower than 542,000 ounces in Q3 2023. The total milled/treated volume was 10.2 million tonnes, slightly up from 9.9 million tonnes in the prior quarter. Revenue per ounce increased to \$2,493, compared to \$2,337 in Q2 2024 and \$1,924 in Q3 2023. The all-in sustaining cost (AISC) was \$1,694 per ounce, lower than the \$1,751 in Q2 2024 but higher than \$1,381 in Q3 2023. Net debt stood at \$1.123 billion, with a net debt to EBITDA ratio of 0.47.

GFI | -1.90% OPEN | 24001c HIGH | 24653c LOW | 23278c CLOSE | 24427c TIME | 07:05

SANLAM LIMITED – Operational Update

Sanlam Group reported strong performance for the nine months ending September 30, 2024. Key highlights include a 15% increase in net result from financial services (NRFFS) and a 17% rise in net operational earnings. New business volumes in life insurance grew by 12%, with the net value of new business (VNB) up by 13%. The group also recorded net client cash flows (NCCF) of R40 billion, with a life insurance net new business margin of 2.81%. Overall, the company saw favourable growth and value creation across its operations.

SLM | 0.97% OPEN | 8722c HIGH | 8936c LOW | 8648c CLOSE | 8829c TIME | 14:20

MTN GROUP LIMITED – Quarterly Update

For the period, the company reported revenue of R1,487 million, up from R1,395 million in 2023. Distributable earnings per share decreased to 54.40 cents from 56.96 cents, while the dividend per share also declined to 48.96 cents from 51.26 cents. Basic earnings per share improved to 84.95 cents, compared to 65.41 cents last year. Headline earnings per share were 49.32 cents, down from 55.78 cents. The net asset value per share increased to R6.98, up from R6.64, and attributable comprehensive income rose to R774 million, compared to R588 million in 2023.

MTN | -3.12% OPEN | 8345c HIGH | 8483c LOW | 8162c CLOSE | 8164c TIME | 07:05

TELKOM SA SOC LIMITED – Voluntary Trading Statement

For the six months ending September 30, 2024, basic earnings per share (EPS) are expected to increase by 5% to 15%, ranging between 210.2c and 230.2c, compared to 200.2c in the previous year. Adjusted EPS shows a significant rise of 60% to 70%, estimated between 320.3c and 340.3c. Headline earnings per share are projected to be in the range of 185.2c to 204.8c, reflecting a change of -5% to +5%. Adjusted headline EPS is expected to increase by 50% to 60%, reaching between 292.5c and 312.0c. The weighted average number of shares in issue increased to approximately 490.9 million.

TKG | 5.86% OPEN | 2690c HIGH | 2879c LOW | 2665c CLOSE | 2820c TIME | 08:00

EXPECTED COMPANY REPORTING SCHEDULE

COMPANY	CODE	RELEASE	DATE
We Buy Cars	WBC	Final	18 Nov '24
Telkom	TKG	Interim	18 Nov '24
Coronation Fund Managers	CML	Final	20 Nov '24
Lewis	LEW	Interim	21 Nov '24
Investec	INL	Interim	21 Nov '24

BANK AND OTHER SELECTE PREFERENCE SHARES

COMPANY	CODE	CLOSE	CLEAN YIELD	NEXT LDT (Est.)
Investec Limited	INPR	9450	11.24	Thu, 28 Nov '24
Standard Bank	SBPP	9900	11.15	Wed, 02 Apr '25
Absa	ABSP	86200	11.48	Wed, 16 Apr '25
Capitec	CPIP	10200	9.69	Tue, 18 Mar '25
Grindrod	GNDP	9500	12.22	Wed, 02 Apr '25
Netcare	NTCP	8300	11.82	Thu, 31 Oct '24
Discovery	DSBP	10301	11.91	Tue, 18 Mar '25

LOCAL EQUITIES | JSE MID CAP COMPANIES (Cents Per Share)

COMPANY	CODE	CLOSE	PREVIOUS	1D%	1M%	YTD%
Aspen Pharmacare Hldgs Ltd	APN	17114	17175	-0.36	-10.85	-15.90
African Rainbow Min Ltd	ARI	16020	15917	0.65	-6.48	-19.90
AVI Ltd	AVI	10954	11063	-0.99	-2.46	33.47
Barloworld Ltd	BAW	8771	8271	6.05	3.19	11.03
Bidvest Ltd	BVT	27612	27998	-1.38	-2.22	9.45
Bytes Technology Grp PLC	BYI	10346	10723	-3.52	-6.08	-27.76
Capital&Counties Prop plc	CCO	3045	3062	-0.56	-8.09	-6.31
Clicks Group Ltd	CLS	37950	38741	-2.04	-0.02	16.51
Dis-Chem Pharmacies Ltd	DCP	3764	3888	-3.19	0.29	22.65
Exxaro Resources Ltd	EXX	16449	16028	2.63	-1.33	-19.56
Fortress Real Est INV B	FFB	1901	1853	2.59	-9.13	32.38
Growthpoint Prop Ltd	GRT	1322	1288	2.64	-5.16	13.18
Harmony GM Co Ltd	HAR	16272	16089	1.14	-6.59	36.06
Hammerson plc	HMN	6530	6550	-0.31	-8.54	860.29
Investec Ltd	INL	13918	14087	-1.20	2.30	10.82
Investec plc	INP	13960	14190	-1.62	1.93	10.84
Italtile Ltd	ITE	1375	1420	-3.17	9.04	22.77
Life Healthc Grp Hldgs Ltd	LHC	1664	1685	-1.25	-1.71	-9.42
MultiChoice Group Ltd	MCG	10875	10925	-0.46	-1.66	34.23
Montauk Renewables Inc	MKR	7863	7900	-0.47	-21.37	-54.28
Mr Price Group Ltd	MRP	25562	25562	0.00	-2.95	63.01
Momentum Met Hldgs Ltd	MTM	2930	2930	0.00	-1.08	33.85
Ninety One Plc	N91	3711	3714	-0.08	-14.16	-13.94
Nedbank Group Ltd	NED	28960	29177	-0.74	-3.17	33.93
Northam Platinum Hldgs Ltd	NPH	11472	11472	0.00	3.45	-18.31
NEPI Rockcastle N.V.	NRP	13896	13808	0.64	-4.48	9.95
Netcare Limited	NTC	1492	1506	-0.93	-0.80	4.78
Ninety One Limited	NY1	3757	3733	0.64	-14.01	-12.57
Old Mutual Limited	OMU	1282	1270	0.94	-1.31	-1.84
OUTsurance Group Ltd	OUT	6309	6235	1.19	3.17	49.50
Pick n Pay Stores Ltd	PIK	2637	2622	0.57	-4.46	13.32
Pepkor Holdings Ltd	PPH	2230	2205	1.13	-6.62	13.60
Quilter Plc	QLT	3291	3286	0.15	1.95	35.54
Redefine Properties Ltd	RDF	481	469	2.56	-5.50	24.94
Remgro Ltd	REM	14855	14795	0.41	-7.02	-8.57
Resilient REIT Limited	RES	5707	5593	2.04	-1.60	28.86
Reinet Investments S.C.A	RNI	48150	48377	-0.47	-0.05	3.28
Sappi Ltd	SAP	5067	5109	-0.82	7.06	14.64
Santam Limited	SNT	37600	37995	-1.04	0.57	31.21
The Spar Group Ltd	SPP	12598	12903	-2.36	-4.60	6.85
Sirius Real Estate Ltd	SRE	2027	2007	1.00	-6.93	-8.49
Tiger Brands Ltd	TBS	23653	23855	-0.85	-3.69	17.51
Transaction Capital Ltd	TCP	280	283	-1.06	-8.20	-64.91
The Foschini Group Limited	TFG	15280	15304	-0.16	3.24	37.71
Thungela Resources Ltd	TGA	13200	12537	5.29	7.32	-14.17
Telkom SA SOC Ltd	TKG	2884	2820	2.27	8.18	-3.03
Truworths Int Ltd	TRU	9931	9859	0.73	-7.28	33.57
Woolworths Holdings Ltd	WHL	6702	6728	-0.39	0.78	-7.17
Zeda Limited	ZZD	1450	1440	0.69	4.62	13.73

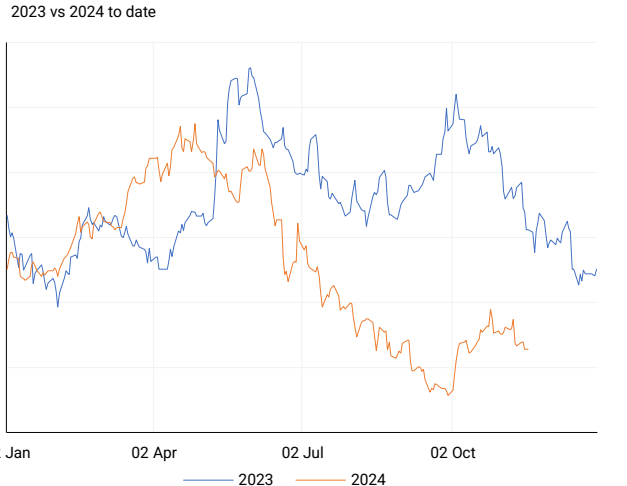
LOCAL EQUITIES | JSE SMALL CAP COMPANIES (Cents Per Share)

COMPANY	CODE	CLOSE	PREVIOUS	1D%	1M%	YTD%
ArcelorMittal SA Limited	ACL	132	125	5.60	-19.51	-19.51
AdvTECH Ltd	ADH	3122	3139	-0.54	-2.68	27.22
Altron Limited A	AEL	2011	2009	0.10	8.70	96.20
AECI Limited	AFE	9393	9424	-0.33	-5.69	-14.37
Alexander Forbes Grp Hldgs	AFH	715	715	0.00	2.29	8.33
Afrimat Limited	AFT	6360	6425	-1.01	-5.48	0.95
African Rainbow Cap Inv	AIL	770	778	-1.03	6.80	57.46
Adcock Ingram Hldgs Ltd	AIP	6700	6600	1.52	-3.18	11.48
Astral Foods Ltd	ARL	16616	16740	-0.74	-4.81	13.37
Attacq Limited	ATT	1286	1242	3.54	-1.61	39.48
Brait PLC	BAT	200	198	1.01	28.21	9.89
Blue Label Telecoms Ltd	BLU	535	540	-0.93	-2.73	37.89
Burstone Group	BTN	966	964	0.21	0.10	20.75
Coronation Fund Mngrs Ld	CML	3850	3851	-0.03	-1.66	23.56
Curro Holdings Limited	COH	1300	1303	-0.23	1.96	11.59
Cashbuild Ltd	CSB	18600	18566	0.18	9.21	11.42
DRD Gold Ltd	DRD	1723	1728	-0.29	-5.90	9.26
Datatec Ltd	DTC	3935	3844	2.37	9.43	-2.84
Emira Property Fund Ltd	EMI	1127	1100	2.45	-0.79	31.81
Equites Prop Fund Ltd	EQU	1403	1408	-0.36	-4.17	0.57
Famous Brands Ltd	FBR	6500	6407	1.45	0.98	12.20
Fairvest Limited B	FTB	462	457	1.09	-2.74	34.30
Grindrod Ltd	GND	1345	1352	-0.52	-11.22	17.36
Hosken Cons Inv Ltd	HCI	19887	19815	0.36	13.17	-1.84
Hudaco Industries Ltd	HDC	20244	20254	-0.05	6.34	26.03
Hyprop Inv Ltd	HYP	4326	4180	3.49	-0.89	39.05
JSE Ltd	JSE	11631	11681	-0.43	-8.76	25.82
KAP Industrial Hldgs Ltd	KAP	310	317	-2.21	-7.19	18.32
Karooooo Ltd	KRO	69500	70001	-0.72	-3.74	46.32
PSG Konsult Limited	KST	1837	1847	-0.54	-0.43	19.67
Libstar Holdings Ltd	LBR	462	470	-1.70	12.14	32.00
Lighthouse Properties plc	LTE	773	752	2.79	-3.25	5.17
Industrials REIT Limited	MLI	25	26	-3.85	31.58	3471.43
MAS P.L.C	MSP	1888	1875	0.69	4.02	9.07
Metair Investments Ltd	MTA	1067	1060	0.66	-11.08	-39.89
Motus Holdings Ltd	MTH	12000	11744	2.18	2.64	18.23
Murray & Roberts Hldgs	MUR	110	111	-0.90	-52.59	-26.17
Oceana Group Ltd	OCE	6800	6792	0.12	-1.79	-3.78
Omnia Holdings Ltd	OMN	6845	6778	0.99	5.60	4.71
Pan African Resource plc	PAN	733	735	-0.27	-8.49	79.22
PPC Limited	PPC	412	412	0.00	7.01	3.26
Raubex Group Ltd	RBX	4850	4762	1.85	-11.61	74.96
RFG Holdings Limited	RFG	1633	1670	-2.22	-3.09	20.96
Reunert Ltd	RLO	7936	7982	-0.58	-0.18	32.40
SA Corp Real Estate Ltd	SAC	285	284	0.35	-3.72	22.84
Super Group Ltd	SPG	2334	2300	1.48	-0.43	-21.55
Stor-Age Prop REIT Ltd	SSS	1574	1517	3.76	1.55	20.52
Southern Sun LTD	SSU	861	853	0.94	3.11	64.00
Sun International Ltd	SUI	4300	4292	0.19	-4.64	4.88
Tharisa plc	THA	1560	1575	-0.95	-2.13	3.24
Tsogo Sun Gaming Ltd	TSG	1174	1186	-1.01	-3.37	-4.16
Vukile Property Fund Ltd	VKE	1755	1750	0.29	-5.65	24.29
Wilson Bayly Hlm-Ovc Ltd	WBO	20742	20797	-0.26	-6.47	59.48

10-YEAR BOND YIELD | SELECTED ITEMS (Basis Point Change)

REGION	YIELD	1D	1M	1Y
United States	4.44%	1	35	—
United Kingdom	4.47%	-1	38	37
Germany	2.35%	1	15	-23
Japan	1.05%	1	11	—
South African 10Y	9.14%	2	-9	-91

SOUTH AFRICAN 10-YEAR

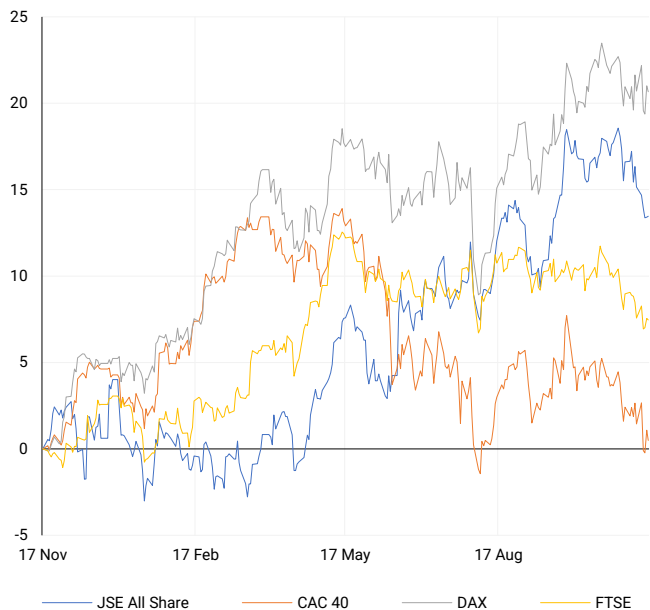


GLOBAL INTEREST RATES | SELECTED ITEMS

REGION	DATE CHANGED	CURRENT RATE
United States	Nov '24	4.50%-4.75%
United Kingdom	Nov '24	4.75%
European	Oct '24	3.40%
SA Repo Rate	Sep '24	8.00%
SA Prime Rate	Sep '24	11.50%

EUROPEAN INDICES

Normalised percentage performances

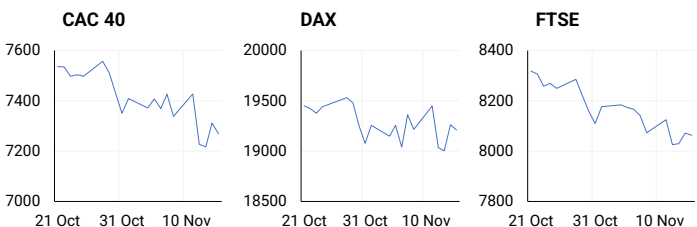


EUROPEAN MARKET SUMMARY

SELECTED ITEMS

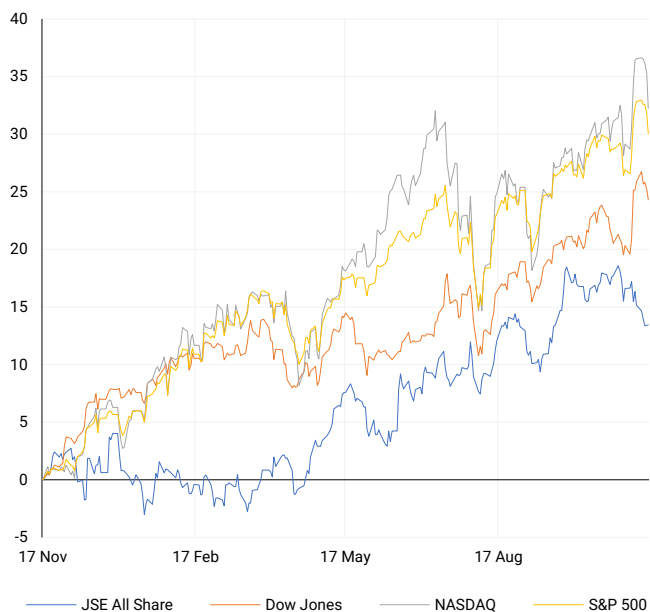
European markets ended lower on Friday after a volatile trading session, as investors analysed new economic data, including the latest U.K. GDP figures. The U.K. economy grew by just 0.1% in the three months to September, falling short of the 0.2% growth forecast and down from a 0.5% expansion in the previous quarter. U.K. Finance Minister Rachel Reeves expressed dissatisfaction with the weaker-than-expected growth.

EUROPEAN INDICES	CLOSE	PREVIOUS	1D%	5D%	1M%	YTD%
CAC 40	7269.63	7311.80	-0.58	-0.94	-3.35	-3.63
DAX 30	19210.81	19263.70	-0.27	-0.02	-1.41	14.68
Eurostoxx 50	4795.35	4831.10	-0.74	-0.14	-4.59	6.05
FTSE	8063.61	8071.19	-0.09	-0.11	-2.25	4.27



AMERICAN INDICES

Normalised percentage performances



AMERICAN MARKET SUMMARY

SELECTED ITEMS

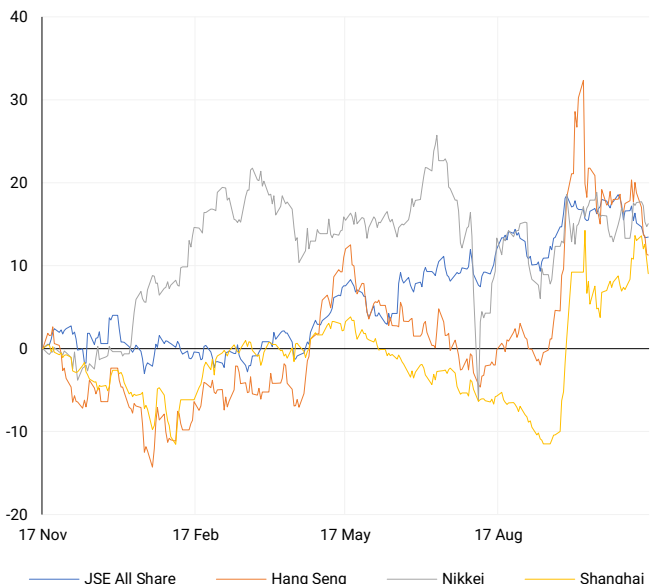
Wall Street's major indexes fell on Friday, with the S&P 500 and Nasdaq seeing their largest losses in two weeks. Investors were concerned about a slower pace of interest-rate cuts following comments from Federal Reserve Chair Jerome Powell, who noted strong economic growth, a robust job market, and inflation above the 2% target as reasons for a cautious approach. This sentiment was reinforced by better-than-expected U.S. retail sales data for October and rising import prices, indicating persistent inflation pressures. Additionally, markets reacted to U.S. President-elect Donald Trump's cabinet appointments.

AMERICAN INDICES	CLOSE	PREVIOUS	1D%	5D%	1M%	YTD%
Dow Jones	43444.99	43750.86	-0.70	-1.24	1.65	15.27
Nasdaq	18680.12	19107.65	-2.24	-3.15	1.99	24.44
S&P 500	5870.62	5949.17	-1.32	-2.08	0.95	23.08
US VIX	16.14	14.31	12.79	8.03	-21.80	29.64



ASIAN INDICES

Normalised percentage performances



ASIAN MARKET SUMMARY

SELECTED ITEMS

Asia-Pacific stocks mostly rose this morning, starting off a relatively quiet week for economic data. Key upcoming releases include China's loan prime rate on Wednesday, with no changes expected; the one-year rate remains at 3.1% and the five-year rate at 3.6%. Japan is set to release trade data on Tuesday and inflation figures on Friday, while the Reserve Bank of Australia will publish minutes from its recent meeting. Meanwhile, Bank of Japan Governor Kazuo Ueda reiterated that the central bank could continue raising interest rates if economic conditions align with forecasts, but he did not specify if a rate hike could happen in December.

ASIAN INDICES	CLOSE	PREVIOUS	1D%	5D%	1M%	YTD%
Hang Seng	19426.34	19435.81	-0.05	-6.28	-4.39	13.95
Nikkei 225	38642.91	38535.70	0.28	-2.17	-3.18	15.48
Shanghai	3330.73	3379.84	-1.45	-3.52	4.04	11.96



COMMODITIES MARKET SUMMARY

SELECTED ITEMS

Gold prices increased this morning, recovering from last week's steep losses as the rally in the U.S. dollar paused. Investors are now awaiting insights from Federal Reserve officials this week for guidance on future interest rate decisions. Meanwhile, oil prices inched higher following an escalation in the Russia-Ukraine conflict over the weekend. However, concerns about weak fuel demand in China and predictions of a global oil surplus limited gains in the oil market.

COMMODITY	LAST	CLOSE	% CHG	1D%	5D%	YTD%
Brent Crude	71.28	71.04	0.34	-1.92	-3.96	-7.84
Gold	2587.86	2562.68	0.98	-0.10	-4.54	24.22
Palladium	970.48	943.50	2.86	-0.03	-4.46	-14.01
Platinum	952.39	936.10	1.74	-0.52	-3.29	-5.18
Silver	30.62	30.25	1.21	-0.65	-3.35	27.18

BRENT CRUDE

One-year



PLATINUM

One-year



GOLD

One-year



CURRENCY MARKET SUMMARY

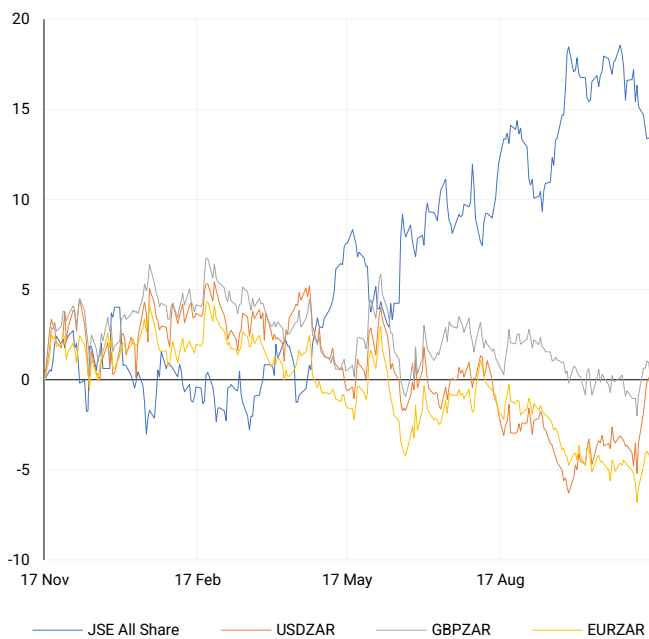
SELECTED ITEMS

The South African rand weakened early on Friday, continuing its decline from the week after Donald Trump's U.S. election victory, as investors awaited S&P Global's review of the country's credit rating. Meanwhile, the dollar gained against the yen this morning following remarks from Japan's central bank governor, who indicated potential future policy tightening but did not specify when it might occur, leaving markets uncertain about the timing of a possible rate hike.

CURRENCY PAIR	LAST	CLOSE	% CHG	1D%	5D%	YTD%
USDZAR	18.14	18.20	-0.29	-0.50	3.24	-0.70
GBPZAR	22.91	22.97	-0.25	-0.79	1.03	-1.41
EURZAR	19.12	19.16	-0.25	-0.38	1.61	-5.08
AUDZAR	11.73	11.76	-0.28	-0.28	1.28	-5.58
EURUSD	1.05	1.05	0.02	0.05	-1.63	-4.54
USDJPY	154.67	154.36	0.21	-1.23	1.08	9.44
GBPUSD	1.26	1.26	0.04	-0.34	-2.25	-0.86
USDCHF	0.89	0.89	-0.03	-0.26	1.37	5.52

CURRENCY PAIRS vs JSE ALL SHARE

Normalised percentage performances



USDZAR

One-year



EURUSD

One-year



SOURCES | JSE, IRESS, MONEYWEB, CNBC, BBC, CNN

Disclaimer: This note is prepared for Sanlam Private Wealth (Pty) Ltd, by K2013143132 (Pty) Ltd trading as ThompsonGreen. ThompsonGreen is an independent company contracted to Sanlam Private Wealth (Pty) Ltd. The views expressed in this note are those of ThompsonGreen and/or its analysts and not necessarily the views of Sanlam Private Wealth (Pty) Ltd, Sanlam or any officer or agent thereof. K2013143132 (Pty) Ltd trading as ThompsonGreen is a research house and not a registered broker, financial adviser or financial service provider. Our editors and customer services teams also do not give personal investment advice. The information in this document is general advice only and may not be appropriate to your particular investment objectives, financial situation or particular needs. Before investing, or if you are in any doubt about your personal situation, you should seek professional advice from a stockbroker or independent financial adviser authorised by the Financial Sector Conduct Authority.