

GLOBAL OVERVIEW | SELECTED INDICES

SOUTH AFRICAN INDICES						
	CLOSE	PREVIOUS	1D%	5D%	1M%	YTD%
All Share	84425.00	83872.74	0.66	-0.41	-3.18	9.80
Top 40	76224.61	75773.36	0.60	-0.54	-3.70	8.13
Financial 15	20975.93	20936.18	0.19	-0.54	-2.02	17.36
Industrial 25	115890.01	115336.52	0.48	0.11	-1.42	11.74
Resource 10	55264.47	54329.92	1.72	-1.87	-10.19	-3.94
Mid Cap	90828.05	89870.75	1.07	-0.41	-1.46	12.95
Small Cap	88584.25	87592.67	1.13	1.12	-0.73	22.20
Banks	12935.77	12929.46	0.05	-1.29	-2.97	18.15
Retailers	7841.58	7721.03	1.56	0.11	0.63	25.80
Property (J253) - TR	2379.34	2359.86	0.83	1.07	-0.67	27.67

AMERICAN INDICES						
	CLOSE	PREVIOUS	1D%	5D%	1M%	YTD%
Dow Jones	43389.60	43444.99	-0.13	-2.04	0.26	15.12
Nasdaq	18791.81	18680.12	0.60	-2.63	1.63	25.18
S&P 500	5893.62	5870.62	0.39	-1.80	0.49	23.56
US VIX	15.58	16.14	-3.47	4.07	-13.59	25.14

EUROPEAN INDICES						
	CLOSE	PREVIOUS	1D%	5D%	1M%	YTD%
CAC 40	7278.23	7269.63	0.12	-2.00	-4.40	-3.51
DAX 30	19189.19	19210.81	-0.11	-1.33	-2.38	14.55
Eurostoxx 50	4762.40	4795.35	-0.69	-2.17	-4.47	5.32
FTSE	8109.32	8063.61	0.57	-0.20	-2.98	4.86

ASIAN INDICES						
	CLOSE	PREVIOUS	1D%	5D%	1M%	YTD%
Hang Seng	19576.61	19426.34	0.77	-4.16	-5.90	14.84
Nikkei 225	38220.85	38642.91	-1.09	-3.32	-1.95	14.21
Shanghai	3323.85	3330.73	-0.21	-4.21	1.91	11.73

EARLY MORNING MARKETS						
	LAST	CLOSE	% CHG	1D%	5D%	YTD%
TENCENT	406.40	404.20	0.54	0.80	-2.18	39.28
BHP AUS	4064.00	4036.00	0.69	0.72	-3.05	-15.56

NOTE: 5D% and 1M% are rolling percentage moves

INTERNATIONAL ECONOMIC CALENDAR | SELECTED EVENTS

TIME	AREA	TODAY'S EVENTS & RELEASES	PERIOD	EXP.	PREV.
12:00	GB	Monetary Policy Reoprt Hearings	--	--	--
15:30	US	Building Permits Prel	Oct	1.46M	1.43M
--	--	--	--	--	--
--	--	--	--	--	--
--	--	--	--	--	--

TIME	AREA	PREVIOUS SESSION'S RELEASES	PERIOD	EXP.	ACT.
20:30	EA	ECB President Lagarde Speech	--	--	--
--	--	--	--	--	--
--	--	--	--	--	--
--	--	--	--	--	--
--	--	--	--	--	--

JSE ALL SHARE | BEST AND WORST ONE-DAY PERFORMERS

BEST ONE-DAY % PERFORMERS					
	CODE	CLOSE	1D%	5D%	YTD%
Gold Fields Ltd	GFI	26042	4.84	-0.55	-6.25
Telkom SA SOC Ltd	TKG	3018	4.65	14.40	1.48
Thungela Resources Ltd	TGA	13798	4.53	5.76	-10.29
Attacq Limited	ATT	1340	4.20	1.67	45.34
Pick n Pay Stores Ltd	PIK	2747	4.17	9.05	18.05
Raubex Group Ltd	RBX	5044	4.00	8.33	81.96

WORST ONE-DAY % PERFORMERS					
	CODE	CLOSE	1D%	5D%	YTD%
Montauk Renewables Inc	MKR	7500	-4.62	-16.42	-56.40
Shaftesbury Capital plc	SHC	2934	-3.65	-6.20	-9.72
Brait PLC	BAT	195	-2.50	14.04	7.14
Bytes Technology Grp PLC	BYI	10117	-2.21	-4.04	-29.36
Sirius Real Estate Ltd	SRE	1990	-1.83	-1.92	-10.16

DIVIDEND DATA

COMPANY	CODE	EXPECTED DIVIDEND	COMPANY	CODE	EXPECTED DIVIDEND
Dis-Chem Pharmacies	DCP	26.9 ZARc	Afrimat	AFT	10 ZARc
Collins Property Group	CPP	50 ZARc	--	--	--
Altron Ltd	AEL	40 ZARc	--	--	--
Exemplar REITail Ltd	EXP	70.2 ZARc	--	--	--
Zeder Investments	ZED	20 ZARc	--	--	--

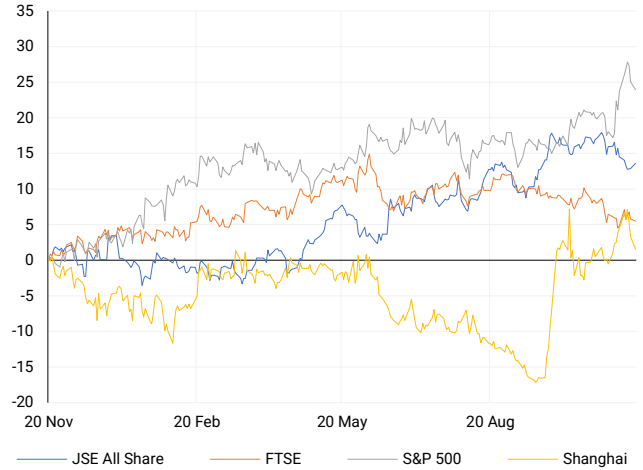
Last date to trade Tue, 19 November

SOURCES | JSE, IRESS, MONEYWEB, CNBC, BBC, CNN

PLEASE SEE THE BOTTOM OF THE LAST PAGE FOR THE FULL DISCLAIMER

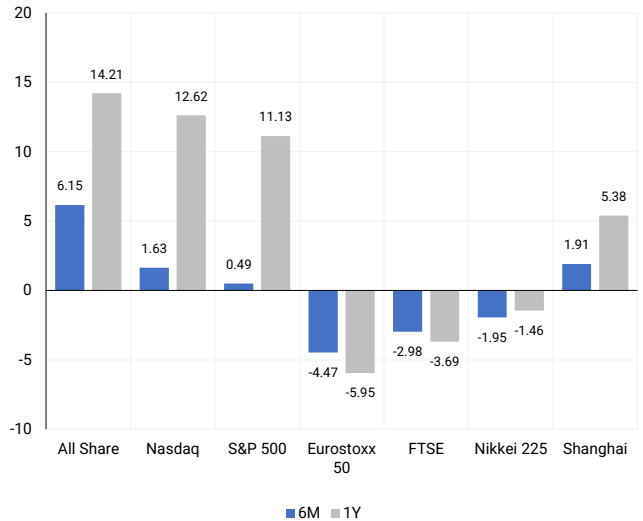
INTERNATIONAL INDICES

Normalised percentage performances - In rand terms



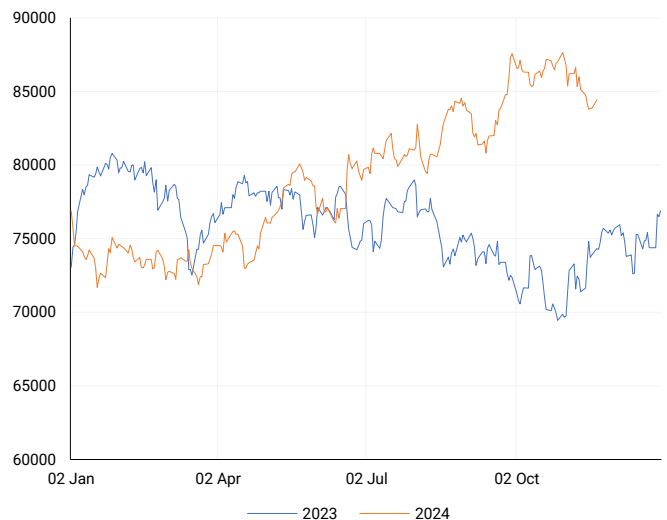
INTERNATIONAL INDICES

6-month & 1-year percentage performances



JSE ALL SHARE INDEX

2023 v 2024 to date



LOCAL EQUITIES | JSE LARGE CAP COMPANIES (Cents Per Share)

COMPANY	CLOSE	PREVIOUS	1D%	5D%	1M%	YTD%
Absa Group Limited	16642	16617	0.15	-0.94	-3.26	1.66
Anglo American plc	52390	52778	-0.74	-2.72	-4.16	10.65
Anglo American Plat Ltd	65321	63000	3.68	0.49	-3.03	-32.24
Anglogold Ashanti Ltd	44665	44076	1.34	-2.69	-15.40	26.38
Anheuser-Busch InBev SA NV	101557	102580	-1.00	-1.09	-12.21	-15.38
BHP Group Limited	47172	47456	-0.60	-2.26	-5.88	-25.53
BID Corporation Ltd	45115	45863	-1.63	4.71	1.00	5.74
British American Tob plc	65415	65304	0.17	3.47	8.66	20.80
Compagnie Fin Richemont	244818	246600	-0.72	-0.48	-5.83	-4.65
Capitec Bank Hldgs Ltd	324842	324978	-0.04	-0.87	-0.36	60.31
Discovery Ltd	19135	19031	0.55	4.16	8.02	33.18
Firststrand Ltd	7630	7625	0.07	-2.50	-7.78	3.80
Gold Fields Ltd	26042	24840	4.84	-0.55	-15.77	-6.25
Glencore plc	8693	8791	-1.11	-3.22	-7.71	-22.14
Impala Platinum Hlgs Ltd	11070	10703	3.43	0.46	-1.07	21.29
Kumba Iron Ore Ltd	33830	33466	1.09	-0.07	-3.60	-44.97
Mondi plc	26769	26810	-0.15	-3.41	-8.86	-26.26
MTN Group Ltd	8350	8206	1.75	0.40	-8.74	-27.71
Naspers Ltd -N-	413778	410811	0.72	0.84	-1.23	32.28
Prosus N.V.	72603	72800	-0.27	-1.19	-3.47	29.56
South32 Limited	4277	4212	1.54	-0.49	-2.55	1.37
Standard Bank Group Ltd	23984	23964	0.08	-0.30	0.36	15.25
Shoprite Holdings Ltd	30280	30155	0.41	-3.61	5.97	10.09
Sanlam Limited	8856	8825	0.35	-0.24	-2.76	21.65
Sasol Limited	9622	9507	1.21	-1.48	-16.55	-48.07
Sibanye Stillwater Ltd	1885	1846	2.11	-3.13	1.24	-24.30
Vodacom Group Ltd	10357	10168	1.86	2.44	-5.46	-2.29

SOUTH AFRICAN MARKET SUMMARY

SELECTED ITEMS

The Top 40 index gained 0.6% on Monday, closing at 76,224 points, while the All Share index rose 0.7% to 84,425 points. Investors are turning their attention to October inflation data and the South African Reserve Bank's interest rate decision on Thursday, where a 25-basis-point rate cut is anticipated. Despite net foreign outflows of \$6.1 billion from South African stocks this year, November has seen a significant slowdown, with only \$62 million in outflows month-to-date, according to Bloomberg and JSE data. Meanwhile, the National Transmission Company of South Africa (NTCSA) reported that the electricity system remains "adequate" as long as Eskom sustains its current strong plant performance.

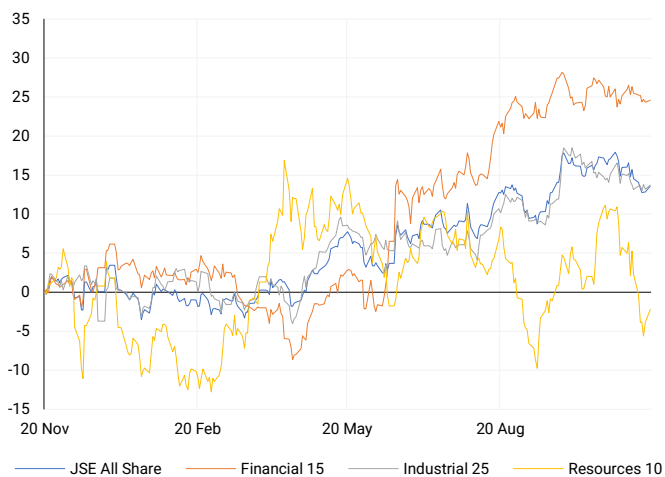
JSE ALL SHARE

One-year



LOCAL INDICES

Normalised percentage performances



LOCAL SENS ANNOUNCEMENTS

SELECTED RELEASE

NASPERS LIMITED – Trading Statement

For the period ending 30 September 2024, the Group expects an increase in earnings across its continuing operations compared to the same period in 2023. Earnings per share are projected to rise by 35.0% to 41.5%, headline earnings per share by 103.2% to 109.6%, and core headline earnings per share by 87.2% to 93.8%. For total operations, earnings per share are anticipated to grow by 44.0% to 51.0%, headline earnings by 125.0% to 132.0%, and core headline earnings by 99.0% to 106.0%.

NPN | 0.72% OPEN | 417000c HIGH | 423318c LOW | 411744c CLOSE | 413778c TIME | 08:30

ASTRAL FOODS LIMITED – Audited Results

For the 12 months ending 30 September 2024, the Group's revenue increased by 6% to R20.48 billion. The operating profit surged significantly to R1.12 billion, compared to a loss of R620.88 million in the previous year. Net profit for the period was R752.9 million, recovering from a loss of R512.2 million last year. Total assets remained stable, while total equity rose by 18% and liabilities decreased by 15%. Earnings per share improved to 1 959 cents from a loss of 1 333 cents, and headline earnings per share rose to 1 920 cents from a loss of 1 324 cents. A final dividend of 520 cents per share was declared.

ARL | 2.19% OPEN | 16700c HIGH | 17157c LOW | 16700c CLOSE | 16980c TIME | 07:05

WE BUY CARS HOLDINGS LIMITED – Audited Consolidated Results

For the year ending 30 September 2024, the Group saw a 17.8% increase in units bought and a 16.4% rise in units sold compared to 2023. Revenue grew by 16.5% to R23.32 billion. Core headline earnings rose by 23.4% to R815.4 million, with core headline earnings per share increasing by 9.9% to 217.4 cents. However, basic earnings declined by 58.2% to R343.1 million, resulting in a drop in basic earnings per share by 62.8% to 91.5 cents. Similarly, headline earnings fell by 58.0% to R343.9 million, with headline earnings per share down by 62.6% to 91.7 cents.

WBC | -0.15% OPEN | 3990c HIGH | 4034c LOW | 3908c CLOSE | 3960c TIME | 07:05

TELKOM SA SOC LIMITED – Interim

For the first half of FY2025, the Group's reported revenue grew by 2.1% to R21.8 billion, with a 1.9% increase from continuing operations and an 11.3% rise from discontinued operations. EBITDA improved by 2.1% to R5.13 billion, while the adjusted EBITDA showed a substantial increase of 17.6%. Profit for the period increased by 9.7% to R1.07 billion, with adjusted profit up by 67.9%. Earnings per share rose by 8.7% to 217.6 cents, while adjusted earnings per share surged by 66.5% to 333.3 cents. Headline earnings per share slightly declined by 1.8% but showed a strong 57.5% increase on an adjusted basis. No dividends were declared during this period.

TKG | 2.27% OPEN | 2820c HIGH | 2912c LOW | 2820c CLOSE | 2884c TIME | 07:15

EXPECTED COMPANY REPORTING SCHEDULE

COMPANY	CODE	RELEASE	DATE
Coronation Fund Managers	CML	Final	20 Nov '24
Lewis	LEW	Interim	21 Nov '24
Investec	INL	Interim	21 Nov '24
Mr Price	MRP	Interim	22 Nov '24
Netcare	NTC	Final	25 Nov '24

BANK AND OTHER SELECTE PREFERENCE SHARES

COMPANY	CODE	CLOSE	CLEAN YIELD	NEXT LDT (Est.)
Investec Limited	INPR	9400	11.24	Thu, 28 Nov '24
Standard Bank	SBPP	9510	11.15	Wed, 02 Apr '25
Absa	ABSP	86250	11.48	Wed, 16 Apr '25
Capitec	CPIP	10200	9.69	Tue, 18 Mar '25
Grindrod	GNDP	9500	12.22	Wed, 02 Apr '25
Netcare	NTCP	8699	11.82	Thu, 31 Oct '24
Discovery	DSBP	10560	11.91	Tue, 18 Mar '25

LOCAL EQUITIES | JSE MID CAP COMPANIES (Cents Per Share)

COMPANY	CODE	CLOSE	PREVIOUS	1D%	1M%	YTD%
Aspen Pharmacare Hldgs Ltd	APN	17181	17114	0.39	-5.60	-15.57
African Rainbow Min Ltd	ARI	16061	16020	0.26	-10.53	-19.70
AVI Ltd	AVI	10990	10954	0.33	5.47	33.91
Barloworld Ltd	BAW	8850	8771	0.90	3.36	12.03
Bidvest Ltd	BVT	27898	27612	1.04	-1.76	10.58
Bytes Technology Grp PLC	BYI	10117	10346	-2.21	-7.57	-29.36
Capital&Counties Prop plc	CCO	2934	3045	-3.65	-12.02	-9.72
Clicks Group Ltd	CLS	38252	37950	0.80	2.60	17.44
Dis-Chem Pharmacies Ltd	DCP	3750	3764	-0.37	0.81	22.19
Exxaro Resources Ltd	EXX	16611	16449	0.98	-1.13	-18.76
Fortress Real Est INV B	FFB	1898	1901	-0.16	-6.41	32.17
Growthpoint Prop Ltd	GRT	1332	1322	0.76	0.38	14.04
Harmony GM Co Ltd	HAR	16752	16272	2.95	-17.19	40.08
Hammerson plc	HMN	6530	6530	0.00	-11.20	860.29
Investec Ltd	INL	13939	13918	0.15	-0.10	10.99
Investec plc	INP	13977	13960	0.12	0.29	10.97
Italtile Ltd	ITE	1389	1375	1.02	8.86	24.02
Life Healthc Grp Hldgs Ltd	LHC	1689	1664	1.50	1.38	-8.06
MultiChoice Group Ltd	MCG	10800	10875	-0.69	-2.78	33.30
Montauk Renewables Inc	MKR	7500	7863	-4.62	-22.70	-56.40
Mr Price Group Ltd	MRP	26094	25562	2.08	0.57	66.41
Momentum Met Hldgs Ltd	MTM	2940	2930	0.34	1.94	34.31
Ninety One Plc	N91	3681	3711	-0.81	-11.54	-14.63
Nedbank Group Ltd	NED	28944	28960	-0.06	-2.98	33.86
Northam Platinum Hldgs Ltd	NPH	11845	11472	3.25	-5.49	-15.65
NEPI Rockcastle N.V.	NRP	14040	13896	1.04	-1.39	11.09
Netcare Limited	NTC	1504	1492	0.80	2.31	5.62
Ninety One Limited	NY1	3732	3757	-0.67	-12.35	-13.15
Old Mutual Limited	OMU	1277	1282	-0.39	-1.08	-2.22
OUTsurance Group Ltd	OUT	6389	6309	1.27	8.21	51.40
Pick n Pay Stores Ltd	PIK	2747	2637	4.17	4.09	18.05
Pepkor Holdings Ltd	PPH	2259	2230	1.30	-3.63	15.08
Quilter Plc	QLT	3246	3291	-1.37	-4.05	33.69
Redefine Properties Ltd	RDF	483	481	0.42	-2.42	25.45
Remgro Ltd	REM	14878	14855	0.15	-6.92	-8.43
Resilient REIT Limited	RES	5698	5707	-0.16	1.44	28.65
Reinet Investments S.C.A	RNI	48279	48150	0.27	0.55	3.56
Sappi Ltd	SAP	5004	5067	-1.24	0.91	13.21
Santam Limited	SNT	38203	37600	1.60	1.87	33.31
The Spar Group Ltd	SPP	12695	12598	0.77	-1.03	7.68
Sirius Real Estate Ltd	SRE	1990	2027	-1.83	-8.51	-10.16
Tiger Brands Ltd	TBS	23886	23653	0.99	-1.27	18.66
Transaction Capital Ltd	TCP	275	280	-1.79	-9.24	-65.54
The Foschini Group Limited	TFG	15476	15280	1.28	3.67	39.47
Thungela Resources Ltd	TGA	13798	13200	4.53	11.63	-10.29
Telkom SA SOC Ltd	TKG	3018	2884	4.65	11.08	1.48
Truworths Int Ltd	TRU	10194	9931	2.65	-5.58	37.11
Woolworths Holdings Ltd	WHL	6784	6702	1.22	3.24	-6.04
Zeda Limited	ZZD	1490	1450	2.76	5.75	16.86

LOCAL EQUITIES | JSE SMALL CAP COMPANIES (Cents Per Share)

COMPANY	CODE	CLOSE	PREVIOUS	1D%	1M%	YTD%
ArcelorMittal SA Limited	ACL	128	132	-3.03	-12.93	-21.95
AdvTECH Ltd	ADH	3126	3122	0.13	-2.68	27.38
Altron Limited A	AEL	2018	2011	0.35	8.49	96.88
AECI Limited	AFE	9428	9393	0.37	-4.96	-14.05
Alexander Forbes Grp Hldgs	AFH	730	715	2.10	8.96	10.61
Afrimat Limited	AFT	6485	6360	1.97	-3.21	2.94
African Rainbow Cap Inv	AIL	789	770	2.47	7.49	61.35
Adcock Ingram Hldgs Ltd	AIP	6700	6700	0.00	-3.96	11.48
Astral Foods Ltd	ARL	16980	16616	2.19	-2.27	15.85
Attacq Limited	ATT	1340	1286	4.20	3.08	45.34
Brait PLC	BAT	195	200	-2.50	23.42	7.14
Blue Label Telecoms Ltd	BLU	530	535	-0.93	-5.19	36.60
Burstone Group	BTN	990	966	2.48	3.45	23.75
Coronation Fund Mngrs Ld	CML	3857	3850	0.18	-2.50	23.78
Curro Holdings Limited	COH	1288	1300	-0.92	0.16	10.56
Cashbuild Ltd	CSB	18800	18600	1.08	10.50	12.62
DRD Gold Ltd	DRD	1751	1723	1.63	-16.90	11.03
Datatec Ltd	DTC	3990	3935	1.40	6.94	-1.48
Emira Property Fund Ltd	EMI	1170	1127	3.82	2.72	36.84
Equites Prop Fund Ltd	EQU	1424	1403	1.50	-3.46	2.08
Famous Brands Ltd	FBR	6500	6500	0.00	-3.70	12.20
Fairvest Limited B	FTB	479	462	3.68	1.91	39.24
Grindrod Ltd	GND	1357	1345	0.89	-11.13	18.41
Hosken Cons Inv Ltd	HCI	19600	19887	-1.44	4.01	-3.26
Hudaco Industries Ltd	HDC	20465	20244	1.09	6.04	27.40
Hyprop Inv Ltd	HYP	4321	4326	-0.12	2.30	38.89
JSE Ltd	JSE	11669	11631	0.33	-6.75	26.23
KAP Industrial Hldgs Ltd	KAP	322	310	3.87	-3.88	22.90
Karoo Ltd	KRO	71999	69500	3.60	3.60	51.58
PSG Konsult Limited	KST	1835	1837	-0.11	-3.57	19.54
Libstar Holdings Ltd	LBR	474	462	2.60	15.05	35.43
Lighthouse Properties plc	LTE	777	773	0.52	-2.14	5.71
Industrials REIT Limited	MLI	25	25	0.00	8.70	3471.43
MAS P.L.C	MSP	1925	1888	1.96	6.24	11.21
Metair Investments Ltd	MTA	1067	1067	0.00	-9.58	-39.89
Motus Holdings Ltd	MTH	12167	12000	1.39	2.86	19.87
Murray & Roberts Hldgs	MUR	104	110	-5.45	-57.55	-30.20
Oceana Group Ltd	OCE	6882	6800	1.21	0.72	-2.62
Omnia Holdings Ltd	OMN	6967	6845	1.78	4.58	6.58
Pan African Resource plc	PAN	758	733	3.41	-11.24	85.33
PPC Limited	PPC	413	412	0.24	7.55	3.51
Raubex Group Ltd	RBX	5044	4850	4.00	-4.96	81.96
RFG Holdings Limited	RFG	1633	1633	0.00	-3.94	20.96
Reunert Ltd	RLO	8081	7936	1.83	2.62	34.82
SA Corp Real Estate Ltd	SAC	292	285	2.46	3.91	25.86
Super Group Ltd	SPG	2349	2334	0.64	-3.69	-21.04
Stor-Age Prop REIT Ltd	SSS	1564	1574	-0.64	4.76	19.75
Southern Sun LTD	SSU	875	861	1.63	4.17	66.67
Sun International Ltd	SUI	4311	4300	0.26	-3.21	5.15
Tharisa plc	THA	1595	1560	2.24	2.24	5.56
Tsogo Sun Gaming Ltd	TSG	1176	1174	0.17	-2.81	-4.00
Vukile Property Fund Ltd	VKE	1765	1755	0.57	-5.36	25.00
Wilson Bayly Hlm-Ovc Ltd	WBO	20844	20742	0.49	-5.59	60.26

10-YEAR BOND YIELD | SELECTED ITEMS (Basis Point Change)

REGION	YIELD	1D	1M	1Y
United States	4.44%	-4	32	-
United Kingdom	4.46%	-1	41	36
Germany	2.37%	2	19	-22
Japan	1.06%	0	9	-
South African 10Y	9.10%	-4	-25	-96

SOUTH AFRICAN 10-YEAR

2023 vs 2024 to date

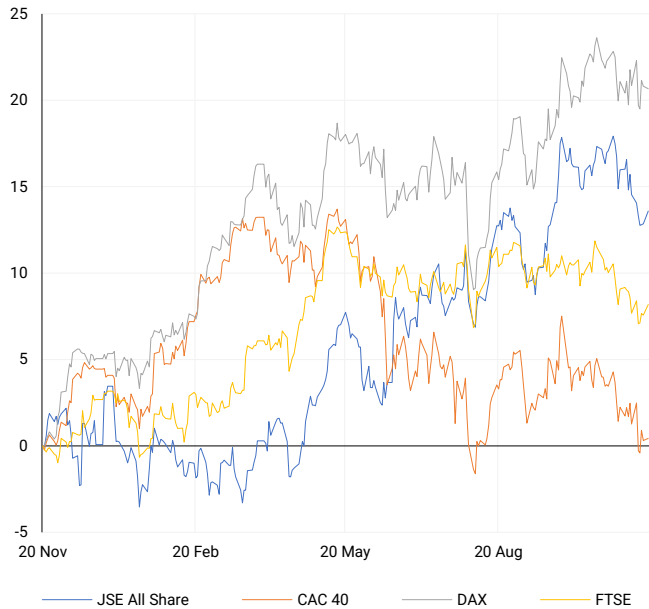


GLOBAL INTEREST RATES | SELECTED ITEMS

REGION	DATE CHANGED	CURRENT RATE
United States	Nov '24	4.50%-4.75%
United Kingdom	Nov '24	4.75%
European	Oct '24	3.40%
SA Repo Rate	Sep '24	8.00%
SA Prime Rate	Sep '24	11.50%

EUROPEAN INDICES

Normalised percentage performances



EUROPEAN MARKET SUMMARY

SELECTED ITEMS

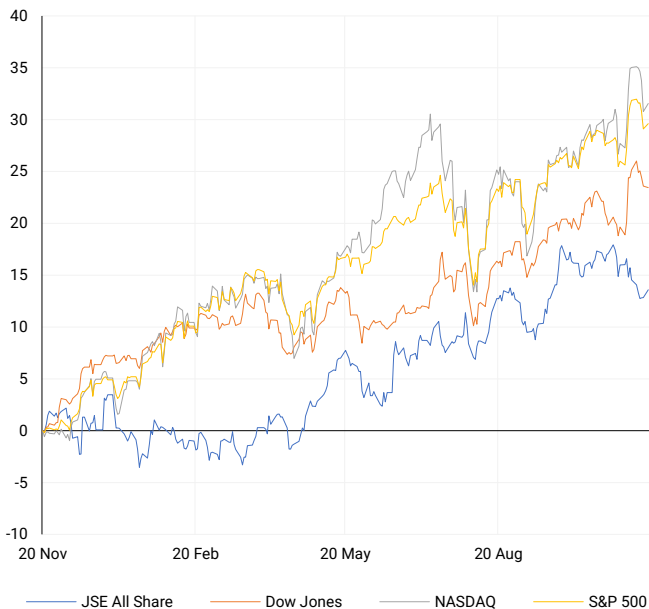
European markets dipped on Monday as investors shifted their focus to upcoming regional inflation data. Key economic indicators this week include the U.K.'s latest inflation figures, expected on Wednesday, following a disappointing GDP growth of just 0.1% in the third quarter. Additionally, the final reading of the euro zone's consumer price index and several purchasing managers' index (PMI) reports across the region are due on Friday. Investors will also be closely watching remarks from central bank officials, including European Central Bank (ECB) President Christine Lagarde, for any hints on potential interest rate cuts in December.

EUROPEAN INDICES	CLOSE	PREVIOUS	1D%	5D%	1M%	YTD%
CAC 40	7278.23	7269.63	0.12	-2.00	-4.40	-3.51
DAX 30	19189.19	19210.81	-0.11	-1.33	-2.38	14.55
Eurostoxx 50	4762.40	4795.35	-0.69	-2.17	-4.47	5.32
FTSE	8109.32	8063.61	0.57	-0.20	-2.98	4.86



AMERICAN INDICES

Normalised percentage performances



AMERICAN MARKET SUMMARY

SELECTED ITEMS

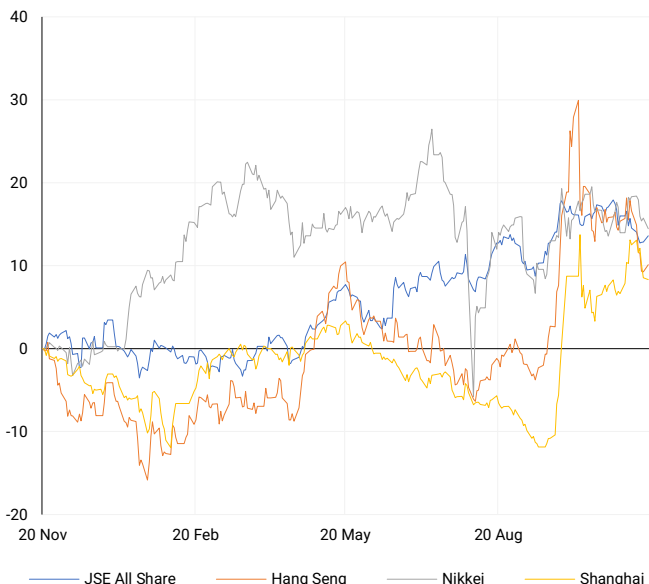
The Nasdaq and S&P 500 ended higher on Monday, regaining some ground as investors looked ahead to Nvidia's upcoming quarterly earnings report. Nvidia, a key player in the AI market, is set to release its third-quarter results on Wednesday, with investors eager to evaluate the demand for its chips and the durability of the AI-driven market rally. Additionally, Tesla's stock surged on expectations of favourable policy shifts under the incoming Trump administration, boosting market sentiment.

AMERICAN INDICES	CLOSE	PREVIOUS	1D%	5D%	1M%	YTD%
Dow Jones	43389.60	43444.99	-0.13	-2.04	0.26	15.12
Nasdaq	18791.81	18680.12	0.60	-2.63	1.63	25.18
S&P 500	5893.62	5870.62	0.39	-1.80	0.49	23.56
US VIX	15.58	16.14	-3.47	4.07	-13.59	25.14



ASIAN INDICES

Normalised percentage performances



ASIAN MARKET SUMMARY

SELECTED ITEMS

Asia-Pacific markets opened higher this morning as investors analysed speeches from Chinese financial policymakers at an investment summit in Hong Kong. Chinese Vice Premier He Lifeng emphasized Beijing's support for Hong Kong's innovation and financial reforms, aiming to boost the city's competitiveness as an international financial hub. He Lifeng, a key figure in economic policy, delivered the opening keynote speech at the summit, highlighting China's commitment to strengthening Hong Kong's financial status.

ASIAN INDICES	CLOSE	PREVIOUS	1D%	5D%	1M%	YTD%
Hang Seng	19576.61	19426.34	0.77	-4.16	-5.90	14.84
Nikkei 225	38220.85	38642.91	-1.09	-3.32	-1.95	14.21
Shanghai	3323.85	3330.73	-0.21	-4.21	1.91	11.73



COMMODITIES MARKET SUMMARY

SELECTED ITEMS

Gold prices rose to a one-week high this morning, supported by a weaker U.S. dollar as investors awaited insights from Federal Reserve officials on the future direction of U.S. interest rates. Meanwhile, oil prices pulled back after Monday's gains, which were driven by a temporary halt in production at Norway's Johan Sverdrup oilfield. However, market sentiment remained cautious due to ongoing concerns about a potential escalation in the Russia-Ukraine conflict, keeping investors on edge.

COMMODITY	LAST	CLOSE	% CHG	1D%	5D%	YTD%
Brent Crude	73.46	73.21	0.34	3.05	1.78	-5.02
Gold	2622.37	2611.91	0.40	1.92	-0.28	26.61
Palladium	1010.06	1013.50	-0.34	7.42	3.17	-7.63
Platinum	972.70	968.51	0.43	3.46	0.34	-1.90
Silver	31.34	31.17	0.53	3.04	1.61	31.05

BRENT CRUDE

One-year



PLATINUM

One-year



GOLD

One-year



CURRENCY MARKET SUMMARY

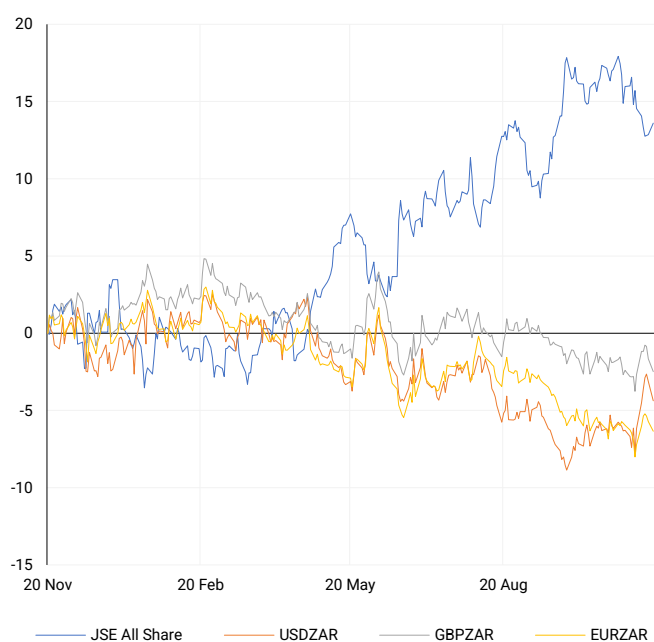
SELECTED ITEMS

South Africa's rand surged on Monday after S&P raised the country's credit rating outlook, boosting market sentiment. Meanwhile, the yen steadied this morning, trading stronger than 155 per dollar, helped by a retreat in the U.S. dollar. The dollar eased as traders took profits following its recent rally to a one-year high against a basket of major currencies, leading to a broader market pullback.

CURRENCY PAIR	LAST	CLOSE	% CHG	1D%	5D%	YTD%
USDZAR	17.92	17.96	-0.22	-1.30	0.14	-1.99
GBPZAR	22.72	22.77	-0.22	-0.85	-1.34	-2.25
EURZAR	18.98	19.04	-0.29	-0.66	-0.33	-5.70
AUDZAR	11.68	11.69	-0.08	-0.63	-0.82	-6.17
EURUSD	1.06	1.06	-0.06	0.59	-0.54	-3.98
USDJPY	154.35	154.66	-0.20	0.20	0.61	9.66
GBPUSD	1.27	1.27	0.00	0.44	-1.47	-0.42
USDCHF	0.88	0.88	0.05	-0.55	0.30	4.94

CURRENCY PAIRS vs JSE ALL SHARE

Normalised percentage performances



USDZAR

One-year



EURUSD

One-year



SOURCES | JSE, IRESS, MONEYWEB, CNBC, BBC, CNN

Disclaimer: This note is prepared for Sanlam Private Wealth (Pty) Ltd, by K2013143132 (Pty) Ltd trading as ThompsonGreen. ThompsonGreen is an independent company contracted to Sanlam Private Wealth (Pty) Ltd. The views expressed in this note are those of ThompsonGreen and/or its analysts and not necessarily the views of Sanlam Private Wealth (Pty) Ltd, Sanlam or any officer or agent thereof. K2013143132 (Pty) Ltd trading as ThompsonGreen is a research house and not a registered broker, financial adviser or financial service provider. Our editors and customer services teams also do not give personal investment advice. The information in this document is general advice only and may not be appropriate to your particular investment objectives, financial situation or particular needs. Before investing, or if you are in any doubt about your personal situation, you should seek professional advice from a stockbroker or independent financial adviser authorised by the Financial Sector Conduct Authority.