

GLOBAL OVERVIEW | SELECTED INDICES

SOUTH AFRICAN INDICES						
	CLOSE	PREVIOUS	1D%	5D%	1M%	YTD%
All Share	84526.75	84425.00	0.12	0.39	-3.07	9.93
Top 40	76300.89	76224.61	0.10	0.22	-3.61	8.24
Financial 15	21008.81	20975.93	0.16	-0.35	-1.87	17.54
Industrial 25	115371.86	115890.01	-0.45	-0.32	-1.86	11.24
Resource 10	56115.99	55264.47	1.54	3.29	-8.81	-2.46
Mid Cap	90953.51	90828.05	0.14	0.51	-1.33	13.11
Small Cap	88842.12	88584.25	0.29	2.13	-0.44	22.55
Banks	12976.33	12935.77	0.31	-0.89	-2.67	18.52
Retailers	7906.26	7841.58	0.82	2.68	1.46	26.83
Property (J253) - TR	2354.35	2379.34	-1.05	1.22	-1.72	26.33

AMERICAN INDICES						
	CLOSE	PREVIOUS	1D%	5D%	1M%	YTD%
Dow Jones	43268.94	43389.60	-0.28	-1.46	-0.02	14.80
Nasdaq	18987.47	18791.81	1.04	-1.52	2.69	26.49
S&P 500	5916.98	5893.62	0.40	-1.12	0.89	24.05
US VIX	16.35	15.58	4.94	11.15	-9.32	31.33

EUROPEAN INDICES						
	CLOSE	PREVIOUS	1D%	5D%	1M%	YTD%
CAC 40	7229.64	7278.23	-0.67	0.04	-5.04	-4.16
DAX 30	19060.31	19189.19	-0.67	0.14	-3.04	13.78
Eurostoxx 50	4701.00	4762.40	-1.29	-2.15	-5.71	3.97
FTSE	8099.02	8109.32	-0.13	0.91	-3.10	4.73

ASIAN INDICES						
	CLOSE	PREVIOUS	1D%	5D%	1M%	YTD%
Hang Seng	19663.67	19576.61	0.44	-0.92	-5.48	15.35
Nikkei 225	38414.43	38220.85	0.51	-2.44	-1.46	14.79
Shanghai	3346.01	3323.85	0.67	-2.22	2.59	12.47

EARLY MORNING MARKETS						
	LAST	CLOSE	% CHG	1D%	5D%	YTD%
TENCENT	409.80	406.20	0.89	0.49	0.59	39.97
BHP AUS	4014.00	4031.00	-0.42	-0.12	-1.44	-15.67

NOTE: 5D% and 1M% are rolling percentage moves

INTERNATIONAL ECONOMIC CALENDAR | SELECTED EVENTS

TIME	AREA	TODAY'S EVENTS & RELEASES	PERIOD	EXP.	PREV.
09:00	GB	Inflation Rate y/y	Oct	2.1%	1.7%
10:00	ZA	Inflation Rate y/y	Oct	3.6%	3.8%
10:00	ZA	Core Inflation Rate y/y	Oct	4.0%	4.1%
12:00	ZA	Business Confidence	Q4	36.0	38.0
13:00	ZA	Retail Sales y/y	Sep	-0.7%	3.2%

TIME	AREA	PREVIOUS SESSION'S RELEASES	PERIOD	EXP.	ACT.
12:00	GB	Monetary Policy Reoprt Hearings	--	--	--
15:30	US	Building Permits Prel	Oct	1.46M	1.41M
--	--	--	--	--	--
--	--	--	--	--	--
--	--	--	--	--	--

JSE ALL SHARE | BEST AND WORST ONE-DAY PERFORMERS

BEST ONE-DAY % PERFORMERS						
	CODE	CLOSE	1D%	5D%	YTD%	
Pick n Pay Stores Ltd	PIK	2881	4.88	15.15	23.81	
Pan African Resource plc	PAN	794	4.75	9.07	94.13	
Harmony GM Co Ltd	HAR	17488	4.39	4.12	46.23	
The Foschini Group Limited	TFG	16128	4.21	5.56	45.35	
Gold Fields Ltd	GFI	27060	3.91	8.75	-2.58	
Telkom SA SOC Ltd	TKG	3134	3.84	16.07	5.38	

WORST ONE-DAY % PERFORMERS						
	CODE	CLOSE	1D%	5D%	YTD%	
Sasol Limited	SOL	9300	-3.35	-2.69	-49.81	
Metair Investments Ltd	MTA	1034	-3.09	-4.70	-41.75	
Bidvest Ltd	BVT	27102	-2.85	-2.66	7.42	
Tharisa plc	THA	1552	-2.70	-4.49	2.71	
Montauk Renewables Inc	MKR	7300	-2.67	-21.41	-57.56	

DIVIDEND DATA

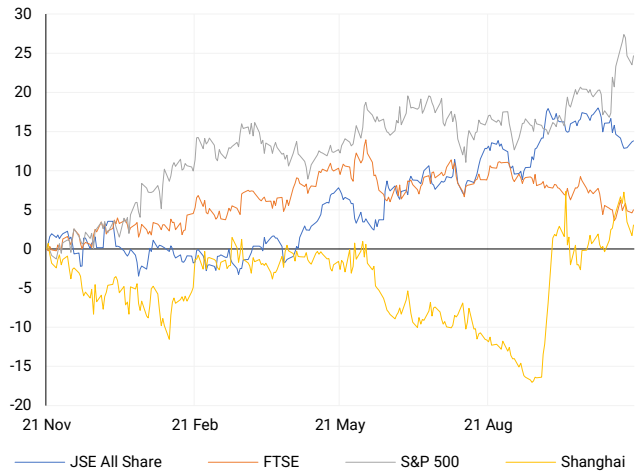
COMPANY	CODE	EXPECTED DIVIDEND	COMPANY	CODE	EXPECTED DIVIDEND
Dis-Chem Pharmacies	DCP	26.9 ZARc	Afrimat	AFT	10 ZARc
Collins Property Group	CPP	50 ZARc	--	--	--
Altron Ltd	AEL	40 ZARc	--	--	--
Exemplar REITail Ltd	EXP	70.2 ZARc	--	--	--
Zeder Investments	ZED	20 ZARc	--	--	--

SOURCES | JSE, IRESS, MONEYWEB, CNBC, BBC, CNN

PLEASE SEE THE BOTTOM OF THE LAST PAGE FOR THE FULL DISCLAIMER

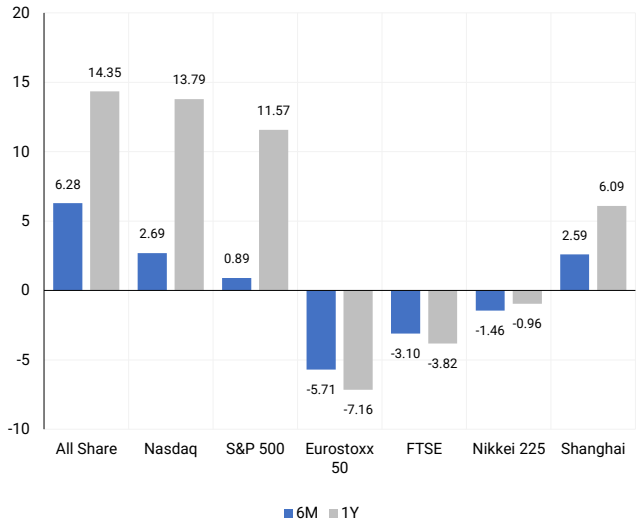
INTERNATIONAL INDICES

Normalised percentage performances - In rand terms



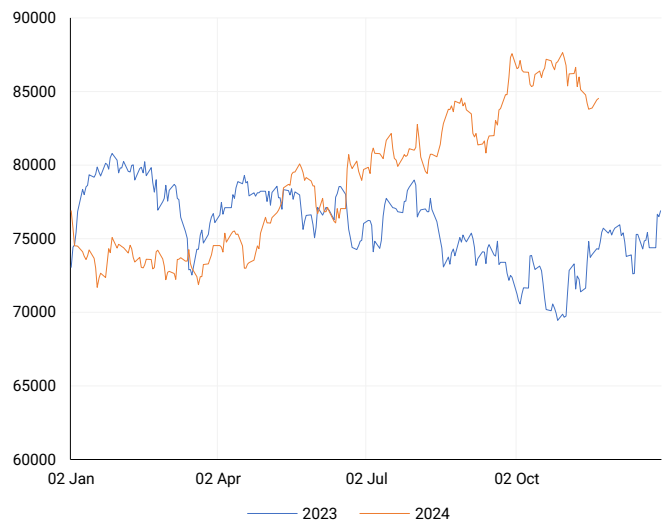
INTERNATIONAL INDICES

6-month & 1-year percentage performances



JSE ALL SHARE INDEX

2023 v 2024 to date



Ex div Wed, 20 November

LOCAL EQUITIES | JSE LARGE CAP COMPANIES (Cents Per Share)

COMPANY	CLOSE	PREVIOUS	1D%	5D%	1M%	YTD%
Absa Group Limited	16701	16642	0.35	-0.28	-2.91	2.02
Anglo American plc	52825	52390	0.83	2.61	-3.36	11.57
Anglo American Plat Ltd	65282	65321	-0.06	1.05	-3.09	-32.28
Anglogold Ashanti Ltd	45520	44665	1.91	3.79	-13.78	28.80
Anheuser-Busch InBev SA NV	100894	101557	-0.65	-0.60	-12.78	-15.93
BHP Group Limited	46986	47172	-0.39	-1.00	-6.25	-25.82
BID Corporation Ltd	44692	45115	-0.94	-2.22	0.05	4.75
British American Tob plc	66075	65415	1.01	3.68	9.76	22.02
Compagnie Fin Richemont	241835	244818	-1.22	0.22	-6.98	-5.81
Capitec Bank Hldgs Ltd	328710	324842	1.19	-0.13	0.83	62.22
Discovery Ltd	19199	19135	0.33	2.29	8.38	33.62
Firststrand Ltd	7653	7630	0.30	-1.39	-7.51	4.11
Gold Fields Ltd	27060	26042	3.91	8.75	-12.48	-2.58
Glencore plc	8649	8693	-0.51	-1.09	-8.17	-22.53
Impala Platinum Hlgs Ltd	11200	11070	1.17	2.75	0.09	22.71
Kumba Iron Ore Ltd	33316	33830	-1.52	-2.06	-5.07	-45.81
Mondi plc	26465	26769	-1.14	-2.59	-9.89	-27.09
MTN Group Ltd	8336	8350	-0.17	-0.83	-8.90	-27.83
Naspers Ltd -N-	410811	413778	-0.72	-0.14	-1.94	31.33
Prosus N.V.	72301	72603	-0.42	-1.25	-3.87	29.02
South32 Limited	4281	4277	0.09	1.78	-2.46	1.47
Standard Bank Group Ltd	23967	23984	-0.07	-0.82	0.28	15.17
Shoprite Holdings Ltd	29736	30280	-1.80	-3.57	4.07	8.11
Sanlam Limited	8854	8856	-0.02	0.44	-2.78	21.62
Sasol Limited	9300	9622	-3.35	-2.69	-19.34	-49.81
Sibanye Stillwater Ltd	1890	1885	0.27	0.37	1.50	-24.10
Vodacom Group Ltd	10432	10357	0.72	-0.65	-4.77	-1.58

SOUTH AFRICAN MARKET SUMMARY

SELECTED ITEMS

The JSE's Top 40 index rose 0.1% to 76,300 points, while the All Share index gained 0.12%, closing at 84,526 points. Markets were lifted by expectations of a 25-basis-point interest rate cut by the SARB on Thursday, following a similar move in September, and anticipation of October's inflation data. Meanwhile, President Cyril Ramaphosa announced South Africa's priorities for its G20 presidency, including inclusive economic growth, food security, and artificial intelligence. The presidency transition occurred at the Rio de Janeiro summit, where Brazil's President Lula urged accelerated climate targets.

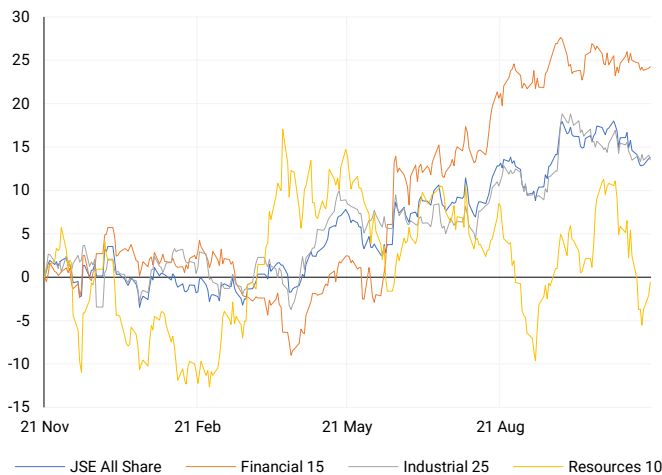
JSE ALL SHARE

One-year



LOCAL INDICES

Normalised percentage performances



LOCAL SENS ANNOUNCEMENTS

SELECTED RELEASE

CORONATION FUND MANAGERS LIMITED – Reviewed Condensed Consolidated Financial Results

For the year ending 30 September 2024, revenue grew by 7% to R3.91 billion. Headline and basic earnings per share both surged by 245% to 630.5 cents. Fund management earnings per share, a key measure of operating performance, increased significantly by 273% to 617.1 cents, or 9% to 402.9 cents when excluding a SARS-related matter. Gross total dividends per share also saw a substantial rise of 243%, reaching 566.0 cents.

CML | 3.06% OPEN | 3995c HIGH | 4031c LOW | 3899c CLOSE | 3975c TIME | 07:30

OLD MUTUAL LIMITED – Voluntary Operating Update

For the nine months ending 30 September 2024, key financial indicators show positive growth. Life APE sales rose by 6% to R10.41 billion, and gross flows increased significantly by 19% to R170.22 billion. Net client cash flow improved drastically, reducing the outflow to R557 million compared to R10.83 billion in the previous year. Loans and advances remained steady at R19.38 billion, while gross written premiums grew by 7% to R20.74 billion.

OMU | 0.31% OPEN | 1250c HIGH | 1287c LOW | 1250c CLOSE | 1281c TIME | 16:10

EXPECTED COMPANY REPORTING SCHEDULE

COMPANY	CODE	RELEASE	DATE
Coronation Fund Managers	CML	Final	20 Nov '24
Lewis	LEW	Interim	21 Nov '24
Investec	INL	Interim	21 Nov '24
Mr Price	MRP	Interim	22 Nov '24
Netcare	NTC	Final	25 Nov '24

BANK AND OTHER SELECTE PREFERENCE SHARES

COMPANY	CODE	CLOSE	CLEAN YIELD	NEXT LDT (Est.)
Investec Limited	INPR	9400	11.24	Thu, 28 Nov '24
Standard Bank	SBPP	9560	11.15	Wed, 02 Apr '25
Absa	ABSP	86516	11.48	Wed, 16 Apr '25
Capitec	CPIP	10200	9.69	Tue, 18 Mar '25
Grindrod	GNDP	9361	12.22	Wed, 02 Apr '25
Netcare	NTCP	8328	11.82	Thu, 31 Oct '24
Discovery	DSBP	10600	11.91	Tue, 18 Mar '25

LOCAL EQUITIES | JSE MID CAP COMPANIES (Cents Per Share)

COMPANY	CODE	CLOSE	PREVIOUS	1D%	1M%	YTD%
Aspen Pharmacare Hldgs Ltd	APN	17150	17181	-0.18	-5.77	-15.72
African Rainbow Min Ltd	ARI	16149	16061	0.55	-10.04	-19.26
AVI Ltd	AVI	11033	10990	0.39	5.88	34.43
Barloworld Ltd	BAW	9000	8850	1.69	5.12	13.92
Bidvest Ltd	BVT	27102	27898	-2.85	-4.56	7.42
Bytes Technology Grp PLC	BYI	10069	10117	-0.47	-8.01	-29.69
Capital&Counties Prop plc	CCO	2926	2934	-0.27	-12.26	-9.97
Clicks Group Ltd	CLS	38015	38252	-0.62	1.96	16.71
Dis-Chem Pharmacies Ltd	DCP	3714	3750	-0.96	-0.16	21.02
Exxaro Resources Ltd	EXX	16589	16611	-0.13	-1.26	-18.87
Fortress Real Est INV B	FFB	1868	1898	-1.58	-7.89	30.08
Growthpoint Prop Ltd	GRT	1317	1332	-1.13	-0.75	12.76
Harmony GM Co Ltd	HAR	17488	16752	4.39	-13.55	46.23
Hammerson plc	HMN	6470	6530	-0.92	-12.02	851.47
Investec Ltd	INL	13842	13939	-0.70	-0.80	10.22
Investec plc	INP	13832	13977	-1.04	-0.75	9.82
Italtile Ltd	ITE	1400	1389	0.79	9.72	25.00
Life Healthc Grp Hldgs Ltd	LHC	1690	1689	0.06	1.44	-8.00
MultiChoice Group Ltd	MCG	10750	10800	-0.46	-3.23	32.68
Montauk Renewables Inc	MKR	7300	7500	-2.67	-24.76	-57.56
Mr Price Group Ltd	MRP	26585	26094	1.88	2.46	69.54
Momentum Met Hldgs Ltd	MTM	2930	2940	-0.34	1.60	33.85
Ninety One Plc	N91	3675	3681	-0.16	-11.68	-14.77
Nedbank Group Ltd	NED	29000	28944	0.19	-2.80	34.12
Northam Platinum Hldgs Ltd	NPH	11891	11845	0.39	-5.12	-15.32
NEPI Rockcastle N.V.	NRP	13879	14040	-1.15	-2.52	9.82
Netcare Limited	NTC	1503	1504	-0.07	2.24	5.55
Ninety One Limited	NY1	3713	3732	-0.51	-12.80	-13.59
Old Mutual Limited	OMU	1281	1277	0.31	-0.77	-1.91
OUTsurance Group Ltd	OUT	6456	6389	1.05	9.35	52.99
Pick n Pay Stores Ltd	PIK	2881	2747	4.88	9.17	23.81
Pepkor Holdings Ltd	PPH	2279	2259	0.89	-2.77	16.10
Quilter Plc	QLT	3211	3246	-1.08	-5.08	32.25
Redefine Properties Ltd	RDF	477	483	-1.24	-3.64	23.90
Remgro Ltd	REM	14843	14878	-0.24	-7.14	-8.65
Resilient REIT Limited	RES	5665	5698	-0.58	0.85	27.91
Reinet Investments S.C.A	RNI	48214	48279	-0.13	0.42	3.42
Sappi Ltd	SAP	4938	5004	-1.32	-0.42	11.72
Santam Limited	SNT	38074	38203	-0.34	1.53	32.86
The Spar Group Ltd	SPP	12750	12695	0.43	-0.60	8.14
Sirius Real Estate Ltd	SRE	1990	1990	0.00	-8.51	-10.16
Tiger Brands Ltd	TBS	24000	23886	0.48	-0.80	19.23
Transaction Capital Ltd	TCP	271	275	-1.45	-10.56	-66.04
The Foschini Group Limited	TFG	16128	15476	4.21	8.04	45.35
Thungela Resources Ltd	TGA	13840	13798	0.30	11.97	-10.01
Telkom SA SOC Ltd	TKG	3134	3018	3.84	15.35	5.38
Truworths Int Ltd	TRU	10141	10194	-0.52	-6.07	36.40
Woolworths Holdings Ltd	WHL	6618	6784	-2.45	0.72	-8.34
Zeda Limited	ZZD	1440	1490	-3.36	2.20	12.94

LOCAL EQUITIES | JSE SMALL CAP COMPANIES (Cents Per Share)

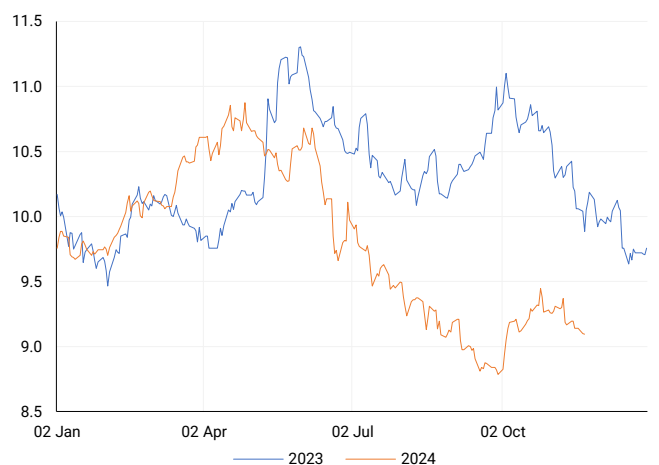
COMPANY	CODE	CLOSE	PREVIOUS	1D%	1M%	YTD%
ArcelorMittal SA Limited	ACL	122	128	-4.69	-17.01	-25.61
AdvTECH Ltd	ADH	3102	3126	-0.77	-3.42	26.41
Altron Limited A	AEL	2025	2018	0.35	8.87	97.56
AECI Limited	AFE	9314	9428	-1.21	-6.11	-15.09
Alexander Forbes Grp Hldgs	AFH	734	730	0.55	9.55	11.21
Afrimat Limited	AFT	6410	6485	-1.16	-4.33	1.75
African Rainbow Cap Inv	AIL	795	789	0.76	8.31	62.58
Adcock Ingram Hldgs Ltd	AIP	6749	6700	0.73	-3.25	12.30
Astral Foods Ltd	ARL	17125	16980	0.85	-1.44	16.84
Attacq Limited	ATT	1322	1340	-1.34	1.69	43.38
Brait PLC	BAT	195	195	0.00	23.42	7.14
Blue Label Telecoms Ltd	BLU	530	530	0.00	-5.19	36.60
Burstone Group	BTN	985	990	-0.51	2.93	23.13
Coronation Fund Mngrs Ld	CML	3975	3857	3.06	0.48	27.57
Curro Holdings Limited	COH	1281	1288	-0.54	-0.39	9.96
Cashbuild Ltd	CSB	19000	18800	1.06	11.67	13.82
DRD Gold Ltd	DRD	1800	1751	2.80	-14.57	14.14
Datatec Ltd	DTC	3980	3990	-0.25	6.67	-1.73
Emira Property Fund Ltd	EMI	1171	1170	0.09	2.81	36.96
Equites Prop Fund Ltd	EQU	1412	1424	-0.84	-4.27	1.22
Famous Brands Ltd	FBR	6380	6500	-1.85	-5.48	10.13
Fairvest Limited B	FTB	479	479	0.00	1.91	39.24
Grindrod Ltd	GND	1350	1357	-0.52	-11.59	17.80
Hosken Cons Inv Ltd	HCI	19587	19600	-0.07	3.94	-3.32
Hudaco Industries Ltd	HDC	20180	20465	-1.39	4.56	25.63
Hyprop Inv Ltd	HYP	4252	4321	-1.60	0.66	36.68
JSE Ltd	JSE	11712	11669	0.37	-6.41	26.70
KAP Industrial Hldgs Ltd	KAP	319	322	-0.93	-4.78	21.76
Karoo Ltd	KRO	72000	71999	0.00	3.60	51.58
PSG Konsult Limited	KST	1848	1835	0.71	-2.89	20.39
Libstar Holdings Ltd	LBR	451	474	-4.85	9.47	28.86
Lighthouse Properties plc	LTE	773	777	-0.51	-2.64	5.17
Industrials REIT Limited	MLI	25	25	0.00	8.70	3471.43
MAS P.L.C	MSP	1890	1925	-1.82	4.30	9.19
Metair Investments Ltd	MTA	1034	1067	-3.09	-12.37	-41.75
Motus Holdings Ltd	MTH	12319	12167	1.25	4.14	21.37
Murray & Roberts Hldgs	MUR	110	104	5.77	-55.10	-26.17
Oceana Group Ltd	OCE	6890	6882	0.12	0.83	-2.50
Omnia Holdings Ltd	OMN	7160	6967	2.77	7.48	9.53
Pan African Resource plc	PAN	794	758	4.75	-7.03	94.13
PPC Limited	PPC	415	413	0.48	8.07	4.01
Raubex Group Ltd	RBX	5143	5044	1.96	-3.09	85.53
RFG Holdings Limited	RFG	1650	1633	1.04	-2.94	22.22
Reunert Ltd	RLO	8019	8081	-0.77	1.83	33.78
SA Corp Real Estate Ltd	SAC	285	292	-2.40	1.42	22.84
Super Group Ltd	SPG	2325	2349	-1.02	-4.67	-21.85
Stor-Age Prop REIT Ltd	SSS	1551	1564	-0.83	3.88	18.76
Southern Sun LTD	SSU	892	875	1.94	6.19	69.90
Sun International Ltd	SUI	4347	4311	0.84	-2.40	6.02
Tharisa plc	THA	1552	1595	-2.70	-0.51	2.71
Tsogo Sun Gaming Ltd	TSG	1180	1176	0.34	-2.48	-3.67
Vukile Property Fund Ltd	VKE	1766	1765	0.06	-5.31	25.07
Wilson Bayly Hlm-Ovc Ltd	WBO	20931	20844	0.42	-5.20	60.93

10-YEAR BOND YIELD | SELECTED ITEMS (Basis Point Change)

REGION	YIELD	1D	1M	1Y
United States	4.39%	-2	31	-
United Kingdom	4.44%	-2	39	34
Germany	2.33%	-3	15	-25
Japan	1.05%	0	9	-
South African 10Y	9.09%	-1	-26	-97

SOUTH AFRICAN 10-YEAR

2023 vs 2024 to date

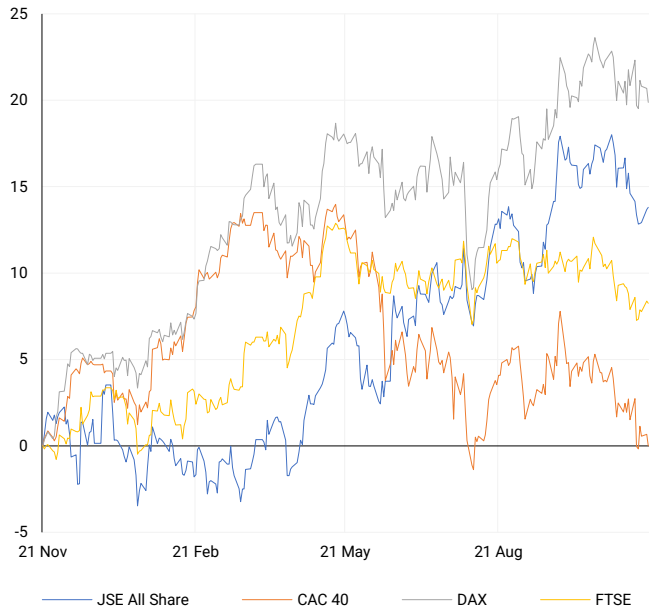


GLOBAL INTEREST RATES | SELECTED ITEMS

REGION	DATE CHANGED	CURRENT RATE
United States	Nov '24	4.50%-4.75%
United Kingdom	Nov '24	4.75%
European	Oct '24	3.40%
SA Repo Rate	Sep '24	8.00%
SA Prime Rate	Sep '24	11.50%

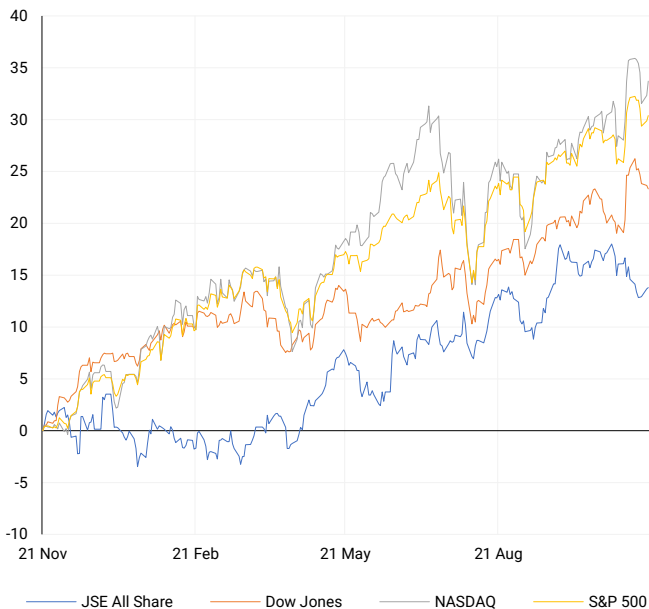
EUROPEAN INDICES

Normalised percentage performances



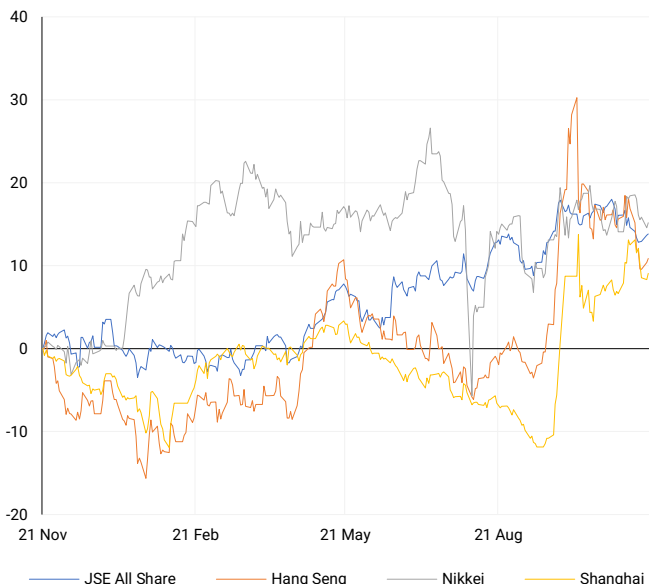
AMERICAN INDICES

Normalised percentage performances



ASIAN INDICES

Normalised percentage performances

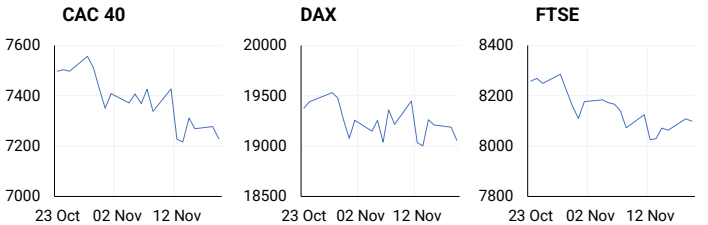


EUROPEAN MARKET SUMMARY

SELECTED ITEMS

Europe's main stock index hit a three-month low on Tuesday as heightened geopolitical tensions drove investors toward safe-haven assets. Russia's announcement of expanded conditions for nuclear retaliation and claims of U.S.-made missiles used by Ukraine intensified global concerns. Meanwhile, European markets saw key earnings reports from Imperial Brands and Thyssenkrupp, alongside the release of finalized eurozone inflation data for October. On Monday, European markets also closed lower, reflecting a cautious investor stance ahead of regional inflation updates.

EUROPEAN INDICES	CLOSE	PREVIOUS	1D%	5D%	1M%	YTD%
CAC 40	7229.64	7278.23	-0.67	0.04	-5.04	-4.16
DAX 30	19060.31	19189.19	-0.67	0.14	-3.04	13.78
Eurostoxx 50	4701.00	4762.40	-1.29	-2.15	-5.71	3.97
FTSE	8099.02	8109.32	-0.13	0.91	-3.10	4.73



AMERICAN MARKET SUMMARY

SELECTED ITEMS

The Nasdaq rose over 1%, and the S&P 500 also closed higher on Tuesday, driven by gains in technology stocks ahead of Nvidia's earnings and a boost from Walmart after it raised its annual forecasts. In contrast, the Dow ended the session lower. Markets initially dipped amid geopolitical tensions, as Russian President Vladimir Putin expanded conditions for nuclear retaliation and Ukraine reportedly used U.S.-made missiles in a strike deep inside Russia. Investors are also weighing President-elect Donald Trump's administrative picks, including Dr. Mehmet Oz for Medicare and Medicaid Services and Howard Lutnick as Commerce Secretary.

AMERICAN INDICES	CLOSE	PREVIOUS	1D%	5D%	1M%	YTD%
Dow Jones	43268.94	43389.60	-0.28	-1.46	-0.02	14.80
Nasdaq	18987.47	18791.81	1.04	-1.52	2.69	26.49
S&P 500	5916.98	5893.62	0.40	-1.12	0.89	24.05
US VIX	16.35	15.58	4.94	11.15	-9.32	31.33



ASIAN MARKET SUMMARY

SELECTED ITEMS

Asia-Pacific markets mostly declined this morning as investors analysed Japan's October trade data. Exports grew 3.1% year-over-year, beating expectations and recovering from a 1.7% decline in September, while imports rose 0.4%, slightly above forecasts but slower than the 2.1% growth in the previous month. Meanwhile, China's central bank kept its benchmark lending rates unchanged, following a rate cut in October.

ASIAN INDICES	CLOSE	PREVIOUS	1D%	5D%	1M%	YTD%
Hang Seng	19663.67	19576.61	0.44	-0.92	-5.48	15.35
Nikkei 225	38414.43	38220.85	0.51	-2.44	-1.46	14.79
Shanghai	3346.01	3323.85	0.67	-2.22	2.59	12.47



COMMODITIES MARKET SUMMARY

SELECTED ITEMS

Gold prices rose for a second straight session on Tuesday, reaching a one-week high as heightened Russia-Ukraine tensions drove demand for safe-haven assets. Investors also awaited updates on the Federal Reserve's interest rate plans. Meanwhile, oil prices inched higher this morning, supported by escalating conflict in Ukraine and increased Chinese crude imports, though gains were tempered by rising U.S. crude stock levels.

COMMODITY	LAST	CLOSE	% CHG	1D%	5D%	YTD%
Brent Crude	73.25	73.28	-0.04	0.10	2.13	-4.93
Gold	2636.63	2632.10	0.17	0.77	1.30	27.59
Palladium	1034.28	1039.03	-0.46	2.52	9.33	-5.31
Platinum	975.06	974.85	0.02	0.65	2.73	-1.26
Silver	31.17	31.21	-0.13	0.12	1.60	31.20

BRENT CRUDE

One-year



PLATINUM

One-year



GOLD

One-year



CURRENCY MARKET SUMMARY

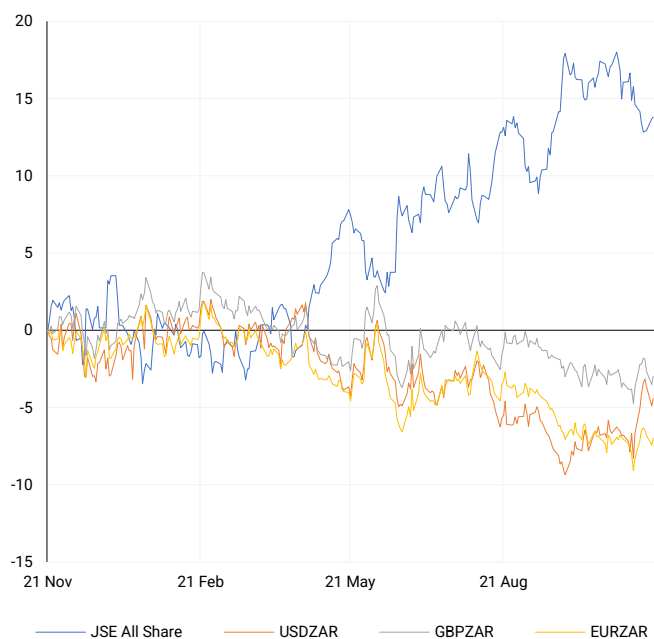
SELECTED ITEMS

The South African rand fell on Tuesday as investors shied away from riskier assets after Russian President Vladimir Putin updated nuclear policies amidst U.S.-Russia tensions over Ukraine. Meanwhile, the U.S. dollar slid to a one-week low, extending a three-day decline following its post-election rally. Bitcoin surged past \$94,000, fuelled by reports of Donald Trump's social media company exploring a deal to acquire crypto trading firm Bakt, raising hopes for a crypto-friendly approach under his administration.

CURRENCY PAIR	LAST	CLOSE	% CHG	1D%	5D%	YTD%
USDZAR	18.07	18.05	0.09	0.52	-0.30	-1.48
GBPZAR	22.92	22.89	0.13	0.52	-0.82	-1.73
EURZAR	19.13	19.13	0.01	0.48	-0.55	-5.25
AUDZAR	11.79	11.79	0.00	0.88	-0.32	-5.35
EURUSD	1.06	1.06	-0.07	-0.03	-0.27	-4.00
USDJPY	155.10	154.65	0.29	0.00	0.02	9.66
GBPUSD	1.27	1.27	0.01	0.03	-0.52	-0.39
USDCHF	0.88	0.88	0.12	-0.06	0.10	4.87

CURRENCY PAIRS vs JSE ALL SHARE

Normalised percentage performances



USDZAR

One-year



EURUSD

One-year



SOURCES | JSE, IRESS, MONEYWEB, CNBC, BBC, CNN

Disclaimer: This note is prepared for Sanlam Private Wealth (Pty) Ltd, by K2013143132 (Pty) Ltd trading as ThompsonGreen. ThompsonGreen is an independent company contracted to Sanlam Private Wealth (Pty) Ltd. The views expressed in this note are those of ThompsonGreen and/or its analysts and not necessarily the views of Sanlam Private Wealth (Pty) Ltd, Sanlam or any officer or agent thereof. K2013143132 (Pty) Ltd trading as ThompsonGreen is a research house and not a registered broker, financial adviser or financial service provider. Our editors and customer services teams also do not give personal investment advice. The information in this document is general advice only and may not be appropriate to your particular investment objectives, financial situation or particular needs. Before investing, or if you are in any doubt about your personal situation, you should seek professional advice from a stockbroker or independent financial adviser authorised by the Financial Sector Conduct Authority.