

GLOBAL OVERVIEW | SELECTED INDICES

SOUTH AFRICAN INDICES						
	CLOSE	PREVIOUS	1D%	5D%	1M%	YTD%
All Share	84510.44	84787.41	-0.33	-1.28	-3.20	9.91
Top 40	76052.41	76338.98	-0.38	-1.42	-3.89	7.88
Financial 15	20934.77	21094.88	-0.76	-1.94	0.48	17.13
Industrial 25	116073.52	116475.14	-0.34	-0.12	-2.31	11.91
Resource 10	55186.44	55026.41	0.29	-3.57	-11.97	-4.08
Mid Cap	91284.44	91554.56	-0.30	-1.78	-2.97	13.52
Small Cap	90960.70	90818.77	0.16	0.30	2.12	25.47
Banks	12923.75	13067.43	-1.10	-2.19	0.56	18.04
Retailers	8348.86	8302.42	0.56	0.05	6.36	33.93
Property (J253) - TR	2393.72	2391.16	0.11	0.67	-0.23	28.44

AMERICAN INDICES						
	CLOSE	PREVIOUS	1D%	5D%	1M%	YTD%
Dow Jones	44910.65	44722.06	0.42	1.39	6.34	19.16
Nasdaq	19218.17	19060.48	0.83	1.13	2.70	28.02
S&P 500	6032.38	5998.74	0.56	1.06	3.42	26.47
US VIX	13.51	13.90	-2.81	-11.35	-30.14	8.51

EUROPEAN INDICES						
	CLOSE	PREVIOUS	1D%	5D%	1M%	YTD%
CAC 40	7235.11	7179.25	0.78	-0.27	-3.67	-4.08
DAX 30	19626.45	19425.73	1.03	1.57	0.76	17.16
Eurostoxx 50	4804.15	4765.90	0.80	0.30	-3.17	6.25
FTSE	8287.30	8281.22	0.07	0.31	0.82	7.16

ASIAN INDICES						
	CLOSE	PREVIOUS	1D%	5D%	1M%	YTD%
Hang Seng	19423.61	19366.96	0.29	1.01	-6.17	13.94
Nikkei 225	38208.03	38349.06	-0.37	-0.20	-1.79	14.18
Shanghai	3326.46	3295.70	0.93	1.81	1.22	11.82

EARLY MORNING MARKETS						
	LAST	CLOSE	% CHG	1D%	5D%	YTD%
TENCENT	401.40	400.00	0.35	-0.70	-1.86	37.84
BHP AUS	4039.00	4007.00	0.80	0.73	0.65	-16.17

NOTE: 5D% and 1M% are rolling percentage moves

INTERNATIONAL ECONOMIC CALENDAR | SELECTED EVENTS

TIME	AREA	TODAY'S EVENTS & RELEASES	PERIOD	EXP.	PREV.
11:00	ZA	ABSA Manufacturing PMI	Nov	49.7	52.6
14:00	ZA	Total New Vehicle Sales	Nov	47.5K	47.9K
17:00	US	ISM Manufacturing PMI	Nov	47.2	46.5
--	--	--	--	--	--
--	--	--	--	--	--

TIME	AREA	PREVIOUS SESSION'S RELEASES	PERIOD	EXP.	ACT.
08:00	ZA	M3 Money Supply y/y	Oct	--	7.8%
08:00	ZA	Private Sector Credit y/y	Oct	4.5%	4.3%
12:00	EA	Inflation Rate y/y Flash	Nov	2.3%	2.3%
14:00	ZA	Balance of Trade	Oct	R10.0B	R14.6B
--	ZA	Budget Balance	Oct	-R30.0B	-R46.08B

JSE ALL SHARE | BEST AND WORST ONE-DAY PERFORMERS

BEST ONE-DAY % PERFORMERS						
	CODE	CLOSE	1D%	5D%	YTD%	
Anglo American plc	AGL	56835	3.50	6.32	20.03	
Adcock Ingram Hldgs Ltd	AIP	6876	2.70	2.18	14.41	
The Spar Group Ltd	SPP	14347	2.25	4.20	21.69	
Pan African Resource plc	PAN	812	2.14	-6.67	98.53	
Vukile Property Fund Ltd	VKE	1830	2.12	0.83	29.60	
Quilter Plc	QLT	3410	2.10	4.63	40.44	

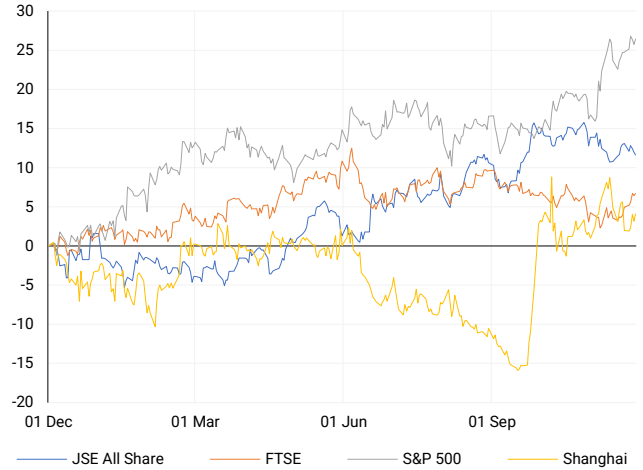
WORST ONE-DAY % PERFORMERS						
	CODE	CLOSE	1D%	5D%	YTD%	
Montauk Renewables Inc	MKR	7931	-6.47	0.39	-53.89	
Karoo Ltd	KRO	76428	-4.47	5.71	60.90	
Life Healthc Grp Hldgs Ltd	LHC	1668	-4.25	-2.57	-9.20	
Brait PLC	BAT	201	-3.83	2.55	10.44	
Transaction Capital Ltd	TCP	258	-3.37	-3.37	-67.67	

DIVIDEND DATA

COMPANY	CODE	EXPECTED DIVIDEND
Naspers	NPN	1205 ZARc
Caxton and CTP Publishers and Printers	CAT	60 ZARc
Datec	DTC	75 ZARc
Oasis Crescent Property Fund	OAS	59 ZARc
We Buy Cars Holdings	WBC	25 ZARc

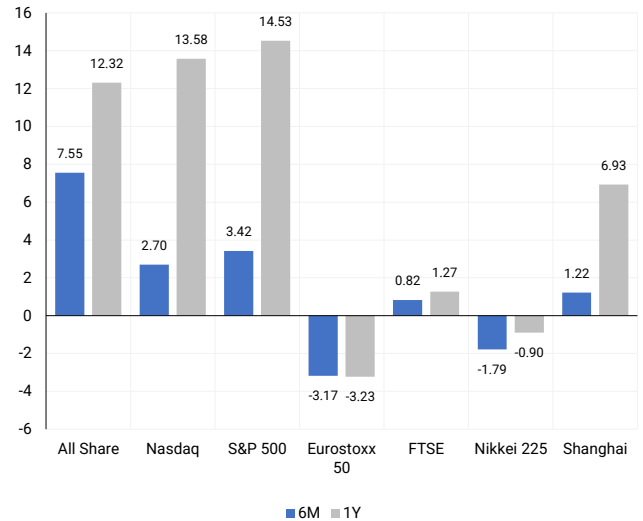
INTERNATIONAL INDICES

Normalised percentage performances - In rand terms



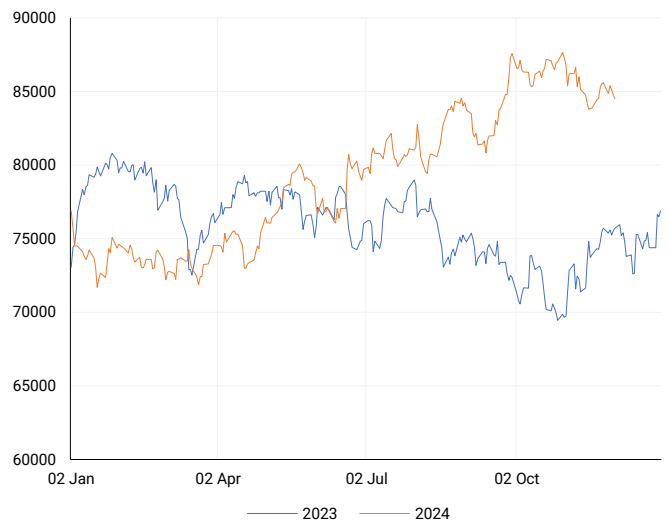
INTERNATIONAL INDICES

6-month & 1-year percentage performances



JSE ALL SHARE INDEX

2023 v 2024 to date



Last date to trade Tue, 03 December

## LOCAL EQUITIES | JSE LARGE CAP COMPANIES (Cents Per Share)

COMPANY	CLOSE	PREVIOUS	1D%	5D%	1M%	YTD%
Absa Group Limited	17250	17281	-0.18	0.29	2.43	5.37
Anglo American plc	56835	54912	3.50	6.32	-0.53	20.03
Anglo American Plat Ltd	59377	59412	-0.06	-4.19	-23.63	-38.41
Anglogold Ashanti Ltd	45220	45185	0.08	-3.79	-12.17	27.95
Anheuser-Busch InBev SA NV	96411	97650	-1.27	-2.88	-15.41	-19.67
BHP Group Limited	47081	46909	0.37	0.17	-7.41	-25.67
BID Corporation Ltd	44121	44332	-0.48	-1.27	3.33	3.41
British American Tob plc	68310	68320	-0.01	1.83	11.56	26.15
Compagnie Fin Richemont	248997	249546	-0.22	3.06	-4.80	-3.02
Capitec Bank Hldgs Ltd	326118	326781	-0.20	-2.99	4.09	60.94
Discovery Ltd	19269	19231	0.20	-1.93	7.28	34.11
Firststrand Ltd	7694	7898	-2.58	-1.26	0.87	4.67
Gold Fields Ltd	25614	25757	-0.56	-9.05	-16.65	-7.79
Glencore plc	8616	8610	0.07	-0.42	-7.70	-22.83
Impala Platinum Hlgs Ltd	10199	10480	-2.68	-6.46	-19.96	11.75
Kumba Iron Ore Ltd	33257	33178	0.24	-1.02	-6.30	-45.90
Mondi plc	27180	27469	-1.05	-0.26	-6.76	-25.12
MTN Group Ltd	8074	8148	-0.91	0.42	-6.95	-30.10
Naspers Ltd -N-	406800	407650	-0.21	0.23	-5.43	30.05
Prosus N.V.	72600	72526	0.10	1.32	-5.50	29.55
South32 Limited	4345	4359	-0.32	-3.70	0.07	2.99
Standard Bank Group Ltd	23688	23844	-0.65	-3.05	-1.09	13.83
Shoprite Holdings Ltd	29579	29787	-0.70	-3.05	-3.18	7.54
Sanlam Limited	8810	8824	-0.16	-1.75	-1.21	21.02
Sasol Limited	8787	8935	-1.66	-10.25	-13.90	-52.58
Sibanye Stillwater Ltd	1788	1783	0.28	-5.60	-22.56	-28.19
Vodacom Group Ltd	10132	10322	-1.84	-1.15	-8.78	-4.42

## SOUTH AFRICAN MARKET SUMMARY

### SELECTED ITEMS

South Africa's Top 40 index dipped 0.38% on Friday to 76,052 points, while the All Share fell 0.33% to 84,510 points. October saw the budget deficit widen to R46.08 billion, although the trade surplus edged up to R14.63 billion. M3 money supply growth accelerated to 7.79% from September's 7.25%, but credit growth slowed to 4.26% from 4.63%. The central bank highlighted that deteriorating infrastructure, including water systems and transport networks, poses a significant risk to the financial system. Johann Rupert, Richemont's chairman, emphasized the importance of extending a trade pact granting duty-free access to the U.S. for South Africa and other African nations.

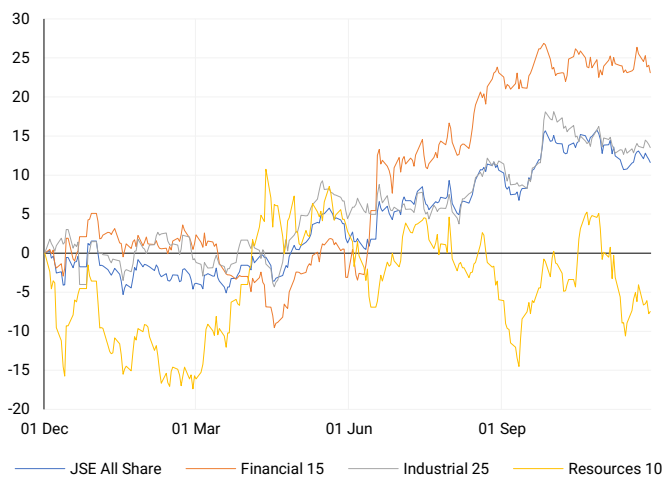
### JSE ALL SHARE

One-year



### LOCAL INDICES

Normalised percentage performances



### LOCAL SENS ANNOUNCEMENTS

#### SELECTED RELEASE

#### AFRICAN MEDIA ENTERTAINMENT LIMITED – Unaudited Interim Results

African Media Entertainment Limited, a broadcasting company listed on the Johannesburg Stock Exchange, reported strong results for the six months ending 30 September 2024. Revenue grew by 8% to R154.2 million, while operating profit surged 23% to R24.3 million. Net profit before tax rose 13% to R28.9 million, with profit attributable to equity holders increasing 19% to R17.3 million. Headline earnings climbed 18% to R17.1 million, and EPS and HEPS were up 20% and 19%, respectively. The interim dividend increased by 20% to 120 cents per share.

AME | 3.20% OPEN | 4000c HIGH | 4000c LOW | 4000c CLOSE | 4000c TIME | 07:30

#### FAIRVEST LIMITED – Audited Financial Statements

For the year ended 30 September 2024, revenue (excluding straight-line rental income) rose 5.9% to R2.03 billion. Basic earnings per A and B shares surged by 70.8% and over 100%, respectively, while headline earnings per A share increased 9.8% and per B share by 11.4%. Net asset value per A share grew 14.5% to 1,611.62 cents, and per B share by 1.7% to 485.69 cents. Dividends for the year increased 4.4% to 138.34 cents per A share and 4.8% to 43.29 cents per B share.

FTA | 0.00% OPEN | 1701c HIGH | 1701c LOW | 1701c CLOSE | 1701c TIME | 07:30

#### QUANTUM FOODS HOLDINGS LIMITED – Audited Consolidated Annual Financial Statements

For the year ended 30 September 2024, revenue declined by 8.9% to R6.33 billion, down from R6.95 billion in the previous year. Operating profit (before capital items) improved significantly to R232 million, compared to a loss of R35 million last year. Headline earnings per share rose to 80.4 cents from a loss of 17.4 cents, while earnings per share increased to 80.0 cents from a loss of 17.8 cents. No final dividend was declared for the year, consistent with the prior period.

QFH | 0.00% OPEN | 724c HIGH | 850c LOW | 724c CLOSE | 850c TIME | 08:00

#### PBT GROUP LIMITED – Interim Financial Results

For the period, revenue from continuing operations grew slightly by 0.3% to R549 million, while gross profit declined by 2.0% to R129.3 million. EBITDA rose 1.4% to R67.0 million, and normalised headline earnings fell by 0.8% to R32.6 million, though earnings per share edged up 0.9% to 31.7 cents. Profit after tax and profit attributable to owners both declined by 2.2%, to R46.9 million and R29.1 million, respectively. Despite these mixed results, the business remains strong with solid cash flows. The Board declared a 27 cents per share interim distribution, up 3.8% from the previous period.

PBG | -2.26% OPEN | 550c HIGH | 562c LOW | 536c CLOSE | 562c TIME | 07:05

### EXPECTED COMPANY REPORTING SCHEDULE

COMPANY	CODE	RELEASE	DATE
Nampak	NPK	Final	02 Dec '24
Tiger Brands	TBS	Final	4 Dec '24
Karoo	KRO	Quarterly	23 Jan '24
---	---	---	---
---	---	---	---

### BANK AND OTHER SELECTE PREFERENCE SHARES

COMPANY	CODE	CLOSE	CLEAN YIELD	NEXT LDT (Est.)
Investec Limited	INPR	9211	11.24	Thu, 28 Nov '24
Standard Bank	SBPP	9266	11.15	Wed, 02 Apr '25
Absa	ABSP	86800	11.48	Wed, 16 Apr '25
Capitec	CPIP	10230	9.69	Tue, 18 Mar '25
Grindrod	GNDP	9360	12.22	Wed, 02 Apr '25
Netcare	NTCP	8320	11.82	Thu, 31 Oct '24
Discovery	DSBP	10600	11.91	Tue, 18 Mar '25

**LOCAL EQUITIES | JSE MID CAP COMPANIES** (Cents Per Share)

COMPANY	CODE	CLOSE	PREVIOUS	1D%	1M%	YTD%
Aspen Pharmacare Hldgs Ltd	APN	16565	16599	-0.20	-9.18	-18.60
African Rainbow Min Ltd	ARI	15902	15932	-0.19	-15.72	-20.49
AVI Ltd	AVI	10988	11100	-1.01	1.88	33.89
Barloworld Ltd	BAW	8553	8751	-2.26	2.37	8.27
Bidvest Ltd	BVT	27609	27664	-0.20	-4.91	9.43
Bytes Technology Grp PLC	BYI	10440	10399	0.39	-3.23	-27.10
Capital&Counties Prop plc	CCO	3127	3139	-0.38	-4.66	-3.78
Clicks Group Ltd	CLS	39290	39926	-1.59	3.32	20.63
Dis-Chem Pharmacies Ltd	DCP	3790	3841	-1.33	4.04	23.49
Exxaro Resources Ltd	EXX	16692	16900	-1.23	-3.66	-18.37
Fortress Real Est INV B	FFB	1980	1975	0.25	-2.08	37.88
Growthpoint Prop Ltd	GRT	1299	1304	-0.38	-2.11	11.22
Harmony GM Co Ltd	HAR	16500	16511	-0.07	-17.34	37.97
Hammerson plc	HMN	6686	6618	1.03	-4.76	883.24
Investec Ltd	INL	12853	13101	-1.89	-5.26	2.34
Investec plc	INP	12985	13209	-1.70	-4.30	3.10
Italtile Ltd	ITE	1440	1431	0.63	9.17	28.57
Life Healthc Grp Hldgs Ltd	LHC	1668	1742	-4.25	0.54	-9.20
MultiChoice Group Ltd	MCG	10730	10730	0.00	-3.33	32.44
Montauk Renewables Inc	MKR	7931	8480	-6.47	-23.74	-53.89
Mr Price Group Ltd	MRP	28783	28386	1.40	12.11	83.55
Momentum Met Hldgs Ltd	MTM	3013	3024	-0.36	6.17	37.64
Ninety One Plc	N91	3682	3724	-1.13	-5.15	-14.61
Nedbank Group Ltd	NED	28878	28922	-0.15	-2.05	33.55
Northam Platinum Hldgs Ltd	NPH	11248	11371	-1.08	-24.51	-19.90
NEPI Rockcastle N.V.	NRP	13976	14021	-0.32	-1.97	10.59
Netcare Limited	NTC	1480	1493	-0.87	-0.74	3.93
Ninety One Limited	NY1	3720	3770	-1.33	-3.90	-13.43
Old Mutual Limited	OMU	1269	1270	-0.08	2.84	-2.83
OUTsurance Group Ltd	OUT	6465	6514	-0.75	7.75	53.20
Pick n Pay Stores Ltd	PIK	3020	3017	0.10	14.57	29.78
Pepkor Holdings Ltd	PPH	2673	2655	0.68	16.22	36.17
Quilter Plc	QLT	3410	3340	2.10	2.16	40.44
Redefine Properties Ltd	RDF	454	456	-0.44	-10.10	17.92
Remgro Ltd	REM	15068	14957	0.74	-2.24	-7.26
Resilient REIT Limited	RES	5905	5891	0.24	6.40	33.33
Reinet Investments S.C.A	RNI	47958	47862	0.20	-1.26	2.87
Sappi Ltd	SAP	5043	5015	0.56	1.88	14.10
Santam Limited	SNT	37722	38776	-2.72	3.46	31.63
The Spar Group Ltd	SPP	14347	14031	2.25	11.48	21.69
Sirius Real Estate Ltd	SRE	2004	1997	0.35	-6.40	-9.53
Tiger Brands Ltd	TBS	25267	25675	-1.59	5.55	25.53
Transaction Capital Ltd	TCP	258	267	-3.37	-11.34	-67.67
The Foschini Group Limited	TFG	17046	16924	0.72	11.90	53.62
Thungela Resources Ltd	TGA	12783	12657	1.00	-0.37	-16.89
Telkom SA SOC Ltd	TKG	3388	3326	1.86	27.42	13.92
Truworths Int Ltd	TRU	10206	10150	0.55	-8.33	37.27
Woolworths Holdings Ltd	WHL	6284	6314	-0.48	-6.46	-12.96
Zeda Limited	ZZD	1345	1375	-2.18	-6.27	5.49

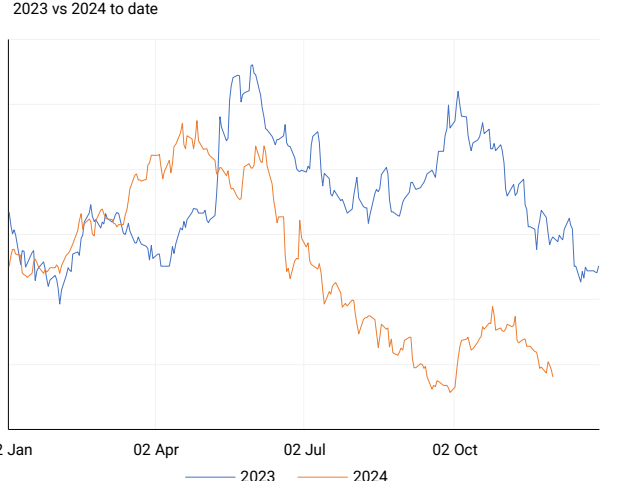
**LOCAL EQUITIES | JSE SMALL CAP COMPANIES** (Cents Per Share)

COMPANY	CODE	CLOSE	PREVIOUS	1D%	1M%	YTD%
ArcelorMittal SA Limited	ACL	131	127	3.15	-20.12	-20.12
AdvTECH Ltd	ADH	3310	3305	0.15	4.09	34.88
Altron Limited A	AEL	2020	2020	0.00	8.66	97.07
AECI Limited	AFE	9210	9224	-0.15	-5.64	-16.04
Alexander Forbes Grp Hldgs	AFH	740	728	1.65	4.52	12.12
Afrimat Limited	AFT	6513	6452	0.95	-1.76	3.38
African Rainbow Cap Inv	AIL	790	784	0.77	11.27	61.55
Adcock Ingram Hldgs Ltd	AIP	6876	6695	2.70	1.87	14.41
Astral Foods Ltd	ARL	19000	19000	0.00	10.47	29.63
Attacq Limited	ATT	1317	1316	0.08	-1.50	42.84
Brait PLC	BAT	201	209	-3.83	24.84	10.44
Blue Label Telecoms Ltd	BLU	532	523	1.72	-5.84	37.11
Burstone Group	BTN	990	980	1.02	4.65	23.75
Coronation Fund Mngrs Ld	CML	4033	4011	0.55	1.79	29.43
Curro Holdings Limited	COH	1334	1339	-0.37	3.25	14.51
Cashbuild Ltd	CSB	19300	19639	-1.73	8.90	15.62
DRD Gold Ltd	DRD	1770	1753	0.97	-19.47	12.24
Datatec Ltd	DTC	4352	4337	0.35	5.25	7.46
Emira Property Fund Ltd	EMI	1171	1176	-0.43	1.91	36.96
Equites Prop Fund Ltd	EQU	1448	1446	0.14	-2.62	3.80
Famous Brands Ltd	FBR	6714	6740	-0.39	6.28	15.90
Fairvest Limited B	FTB	496	491	1.02	3.33	44.19
Grindrod Ltd	GND	1290	1310	-1.53	-12.48	12.57
Hosken Cons Inv Ltd	HCI	17283	17791	-2.86	-6.91	-14.69
Hudaco Industries Ltd	HDC	20050	20110	-0.30	-1.23	24.82
Hyprop Inv Ltd	HYP	4469	4399	1.59	7.84	43.65
JSE Ltd	JSE	11820	11800	0.17	-5.39	27.87
KAP Industrial Hldgs Ltd	KAP	330	330	0.00	-2.08	25.95
Karooooo Ltd	KRO	76428	80000	-4.47	11.57	60.90
PSG Konsult Limited	KST	1900	1911	-0.58	0.58	23.78
Libstar Holdings Ltd	LBR	421	420	0.24	0.00	20.29
Lighthouse Properties plc	LTE	771	775	-0.52	-1.91	4.90
Industrials REIT Limited	MLI	24	25.5	-5.88	-7.69	3328.57
MAS P.L.C	MSP	2072	2088	-0.77	12.73	19.70
Metair Investments Ltd	MTA	1087	1084	0.28	-5.64	-38.76
Motus Holdings Ltd	MTH	12310	12390	-0.65	3.58	21.28
Murray & Roberts Hldgs	MUR	110	110	0.00	-54.73	-26.17
Oceana Group Ltd	OCE	6750	6853	-1.50	1.23	-4.49
Omnia Holdings Ltd	OMN	7291	7330	-0.53	10.40	11.53
Pan African Resource plc	PAN	812	795	2.14	-1.46	98.53
PPC Limited	PPC	462	459	0.65	19.69	15.79
Raubex Group Ltd	RBX	5261	5250	0.21	7.67	89.79
RFG Holdings Limited	RFG	1910	1893	0.90	11.70	41.48
Reunert Ltd	RLO	7603	7500	1.37	-4.96	26.84
SA Corp Real Estate Ltd	SAC	290	290	0.00	0.00	25.00
Super Group Ltd	SPG	2846	2850	-0.14	22.62	-4.34
Stor-Age Prop REIT Ltd	SSS	1520	1500	1.33	1.27	16.39
Southern Sun LTD	SSU	848	835	1.56	0.71	61.52
Sun International Ltd	SUI	4315	4288	0.63	-7.56	5.24
Tharisa plc	THA	1615	1585	1.89	-1.22	6.88
Tsogo Sun Gaming Ltd	TSG	1059	1075	-1.49	-16.15	-13.55
Vukile Property Fund Ltd	VKE	1830	1792	2.12	-0.44	29.60
Wilson Bayly Hlm-Ovc Ltd	WBO	20410	20221	0.93	-5.61	56.93

**10-YEAR BOND YIELD | SELECTED ITEMS** (Basis Point Change)

REGION	YIELD	1D	1M	1Y
United States	4.21%	-5	-17	-
United Kingdom	4.24%	-3	-20	10
Germany	2.09%	-4	-32	-27
Japan	1.07%	3	13	-
South African 10Y	8.90%	-5	-37	-108

**SOUTH AFRICAN 10-YEAR**

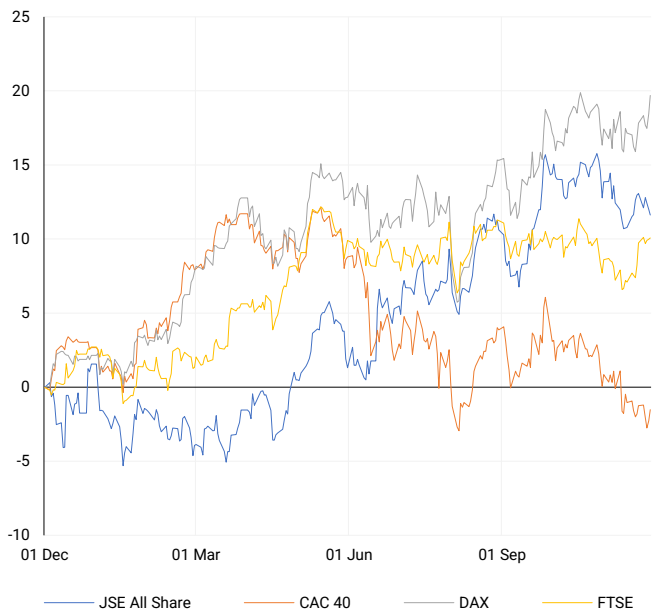


**GLOBAL INTEREST RATES | SELECTED ITEMS**

REGION	DATE CHANGED	CURRENT RATE
United States	Nov '24	4.50%-4.75%
United Kingdom	Nov '24	4.75%
European	Oct '24	3.40%
SA Repo Rate	Nov '24	7.75%
SA Prime Rate	Nov '24	11.25%

## EUROPEAN INDICES

Normalised percentage performances

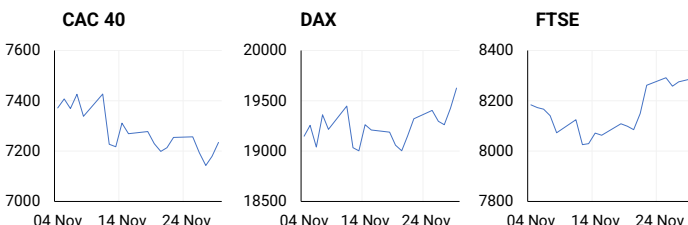


## EUROPEAN MARKET SUMMARY

### SELECTED ITEMS

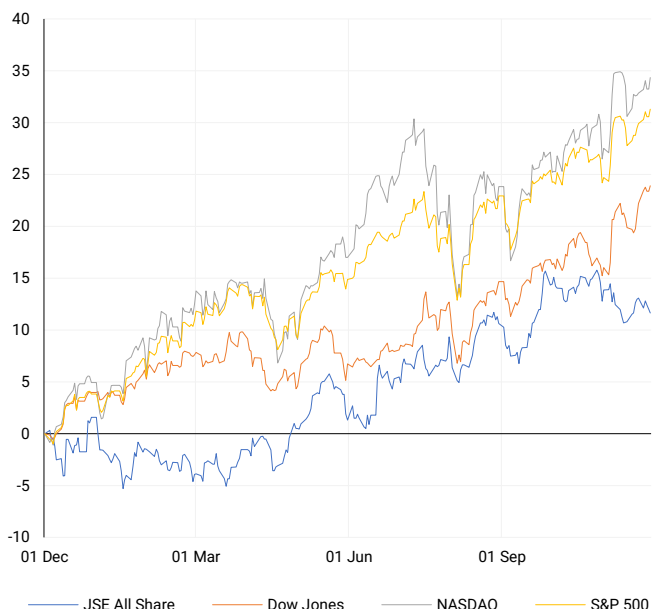
European stocks ended higher on Friday after a mixed start, as investors digested new eurozone inflation data. Flash estimates from Eurostat showed eurozone inflation rose to 2.3% in November, exceeding the European Central Bank's 2% target and aligning with economists' forecasts. The data strengthens the case for a cautious rate cut at the ECB's upcoming meeting on December 12. In France, harmonized inflation ticked up to 1.7% in November from 1.6% in October, matching expectations from economists.

EUROPEAN INDICES	CLOSE	PREVIOUS	1D%	5D%	1M%	YTD%
CAC 40	7235.11	7179.25	0.78	-0.27	-3.67	-4.08
DAX 30	19626.45	19425.73	1.03	1.57	0.76	17.16
Eurostoxx 50	4804.15	4765.90	0.80	0.30	-3.17	6.25
FTSE	8287.30	8281.22	0.07	0.31	0.82	7.16



## AMERICAN INDICES

Normalised percentage performances



## AMERICAN MARKET SUMMARY

### SELECTED ITEMS

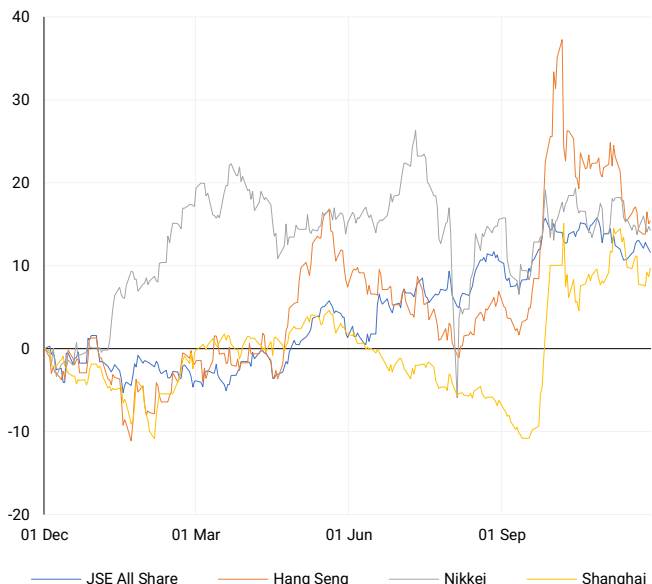
The S&P 500 and Dow Jones Industrial Average hit record highs during a shortened Black Friday trading session, driven by gains in technology stocks like Nvidia. Retail stocks were also in focus as the holiday shopping season began. This rebound followed Wednesday's losses, when technology stocks led declines amid concerns that strong U.S. inflation could make the Federal Reserve cautious about cutting interest rates.

AMERICAN INDICES	CLOSE	PREVIOUS	1D%	5D%	1M%	YTD%
Dow Jones	44910.65	44722.06	0.42	1.39	6.34	19.16
Nasdaq	19218.17	19060.48	0.83	1.13	2.70	28.02
S&P 500	6032.38	5998.74	0.56	1.06	3.42	26.47
US VIX	13.51	13.90	-2.81	-11.35	-30.14	8.51



## ASIAN INDICES

Normalised percentage performances



## ASIAN MARKET SUMMARY

### SELECTED ITEMS

Asia-Pacific markets edged higher this morning, starting a data-heavy week with a focus on economic indicators from China, Japan, South Korea, and more. China's official manufacturing PMI for November rose to 50.3, its highest since April, exceeding expectations and improving from 50.1 in October. However, non-manufacturing PMI dipped slightly to 50.0, while the composite PMI remained steady at 50.8. Australia's retail sales showed a robust 3.4% year-on-year growth in October, the fastest since May 2023. South Korea's preliminary trade data revealed exports grew by 1.4% in November, falling short of forecasts and slowing significantly from October's 4.6%.

ASIAN INDICES	CLOSE	PREVIOUS	1D%	5D%	1M%	YTD%
Hang Seng	19423.61	19366.96	0.29	1.01	-6.17	13.94
Nikkei 225	38208.03	38349.06	-0.37	-0.20	-1.79	14.18
Shanghai	3326.46	3295.70	0.93	1.81	1.22	11.82



## COMMODITIES MARKET SUMMARY

### SELECTED ITEMS

Gold prices fell this morning after a four-session rally, as a stronger U.S. dollar and profit-taking weighed on the metal. Investors are now looking to upcoming U.S. economic data for insights into the Federal Reserve's monetary policy. Meanwhile, oil prices inched higher, supported by positive factory activity data from China, the world's second-largest oil consumer, and renewed tensions in the Middle East as Israel resumed attacks on Lebanon despite a ceasefire.

COMMODITY	LAST	CLOSE	% CHG	1D%	5D%	YTD%
Brent Crude	72.23	72.94	-0.97	-0.31	-2.86	-5.37
Gold	2628.42	2653.82	-0.96	0.59	-2.29	28.64
Palladium	970.80	983.59	-1.30	0.21	-2.86	-10.36
Platinum	943.25	948.36	-0.54	5.96	-1.31	-3.94
Silver	30.20	30.62	-1.37	1.29	-2.33	28.72

## BRENT CRUDE

One-year



## PLATINUM

One-year



## GOLD

One-year



## CURRENCY MARKET SUMMARY

### SELECTED ITEMS

South Africa's rand strengthened on Friday despite mixed month-end economic data, while the U.S. dollar edged higher this morning as markets anticipated a critical week for Federal Reserve rate cut expectations. The yen's recent recovery was supported by bets on potential rate increases in Japan. Meanwhile, U.S. President-elect Donald Trump demanded on Saturday that BRICS nations pledge not to pursue or support a currency to rival the dollar, threatening 100% tariffs if they failed to comply.

CURRENCY PAIR	LAST	CLOSE	% CHG	1D%	5D%	YTD%
USDZAR	18.15	18.10	0.32	-0.05	0.27	-1.24
GBPZAR	23.04	23.03	0.03	0.20	1.37	-1.14
EURZAR	19.10	19.12	-0.08	0.05	1.07	-5.31
AUDZAR	11.80	11.79	0.09	0.13	-0.15	-5.39
EURUSD	1.05	1.06	-0.43	0.12	1.13	-4.25
USDJPY	150.54	149.63	0.61	-1.27	-3.12	6.09
GBPUSD	1.27	1.27	-0.29	0.31	1.04	-0.04
USDCHF	0.88	0.88	0.42	-0.28	-1.30	4.67

## CURRENCY PAIRS vs JSE ALL SHARE

Normalised percentage performances



## USDZAR

One-year



## EURUSD

One-year



SOURCES | JSE, IRESS, MONEYWEB, CNBC, BBC, CNN

**Disclaimer:** This note is prepared for Sanlam Private Wealth (Pty) Ltd, by K2013143132 (Pty) Ltd trading as ThompsonGreen. ThompsonGreen is an independent company contracted to Sanlam Private Wealth (Pty) Ltd. The views expressed in this note are those of ThompsonGreen and/or its analysts and not necessarily the views of Sanlam Private Wealth (Pty) Ltd, Sanlam or any officer or agent thereof. K2013143132 (Pty) Ltd trading as ThompsonGreen is a research house and not a registered broker, financial adviser or financial service provider. Our editors and customer services teams also do not give personal investment advice. The information in this document is general advice only and may not be appropriate to your particular investment objectives, financial situation or particular needs. Before investing, or if you are in any doubt about your personal situation, you should seek professional advice from a stockbroker or independent financial adviser authorised by the Financial Sector Conduct Authority.