

GLOBAL OVERVIEW | SELECTED INDICES

SOUTH AFRICAN INDICES						
	CLOSE	PREVIOUS	1D%	5D%	1M%	YTD%
All Share	96911.35	96429.74	0.50	1.07	2.74	15.24
Top 40	89195.71	88757.81	0.49	0.95	3.05	18.33
Financial 15	21418.62	21251.88	0.78	0.83	1.61	3.93
Industrial 25	137065.88	137098.30	-0.02	0.61	2.16	15.49
Resource 10	76083.08	75196.88	1.18	1.89	5.99	46.57
Mid Cap	98265.15	96997.77	1.31	2.80	3.26	9.88
Small Cap	93163.02	92835.34	0.35	1.86	1.78	-0.24
Banks	12881.26	12827.60	0.42	-0.19	0.91	1.72
Retailers	7096.20	6993.48	1.47	2.34	-3.90	-16.67
Property (J253) - TR	2548.07	2530.70	0.69	1.62	-0.19	6.02

AMERICAN INDICES						
	CLOSE	PREVIOUS	1D%	5D%	1M%	YTD%
Dow Jones	44494.94	44094.77	0.91	3.26	5.26	4.59
Nasdaq	20202.89	20369.73	-0.82	1.46	5.70	4.62
S&P 500	6198.01	6204.95	-0.11	1.74	4.84	5.38
US VIX	16.83	16.73	0.60	-3.72	-9.37	-3.00

EUROPEAN INDICES						
	CLOSE	PREVIOUS	1D%	5D%	1M%	YTD%
CAC 40	7662.59	7665.91	-0.04	0.61	-1.15	3.82
DAX 30	23671.27	23909.61	-1.00	0.13	-1.36	18.90
Eurostoxx 50	5286.50	5310.00	-0.44	-0.24	-1.47	7.98
FTSE	8785.33	8760.96	0.28	0.30	0.15	7.49

ASIAN INDICES						
	CLOSE	PREVIOUS	1D%	5D%	1M%	YTD%
Hang Seng	24072.28	24072.28	0.00	-0.43	3.36	20.00
Nikkei 225	39986.33	40487.39	-1.24	3.08	5.32	0.23
Shanghai	3457.75	3444.43	0.39	1.09	3.29	3.16

EARLY MORNING MARKETS						
	LAST	CLOSE	% CHG	1D%	5D%	YTD%
TENCENT	503.00	503.00	0.00	-1.95	-0.20	20.86
BHP AUS	3664	3675	-0.30	-2.08	3.11	-5.19

NOTE: 5D% and 1M% are rolling percentage moves

INTERNATIONAL ECONOMIC CALENDAR | SELECTED EVENTS

TIME	AREA	TODAY'S EVENTS & RELEASES	PERIOD	EXP.	PREV.
10:30	SA	Inflation Expectations	Q2	4.4%	4.3%
14:15	US	ADP Non-Farm Employment Change	--	99k	37k
--	--	--	--	--	--
--	--	--	--	--	--
--	--	--	--	--	--

TIME	AREA	PREVIOUS SESSION'S RELEASES	PERIOD	EXP.	ACT.
11:00	SA	ABSA Manufacturing PMI	Jun	44	48.5
11:00	SA	Total New Vehicle Sales	Jun	47k	47.3K
15:30	--	ECB President Lagarde Speaks	--	--	--
15:30	--	BOE Gov Bailey Speaks	--	--	--
15:30	--	Fed Chair Powell Speaks	--	--	--

JSE ALL SHARE | BEST AND WORST ONE-DAY PERFORMERS

BEST ONE-DAY % PERFORMERS						
	CODE	CLOSE	1D%	5D%	YTD%	
Montauk Renewables Inc	MKR	4360	8.35	3.98	-47.47	
Reinet Investments S.C.A	RNI	59940	4.04	18.22	34.05	
The Foschini Group Limited	TFG	13309	3.23	4.29	-20.78	
Resilient REIT Limited	RES	6203	2.87	4.13	5.57	
Northam Platinum Hldgs Ltd	NPH	19640	2.45	6.91	101.62	
Afrimat Limited	AFT	4500	2.41	-1.85	-36.58	

WORST ONE-DAY % PERFORMERS						
	CODE	CLOSE	1D%	5D%	YTD%	
AECI Limited	AFE	10083	-4.87	-3.80	15.34	
Transaction Capital Ltd	TCP	130	-4.41	-1.52	-46.72	
Bytes Technology Grp PLC	BYI	12156	-3.52	0.46	23.65	
Alexander Forbes Grp Hldgs	AFH	870	-3.33	4.57	6.75	
Reunert Ltd	RLO	5599	-2.63	-3.35	-25.35	

DIVIDEND DATA

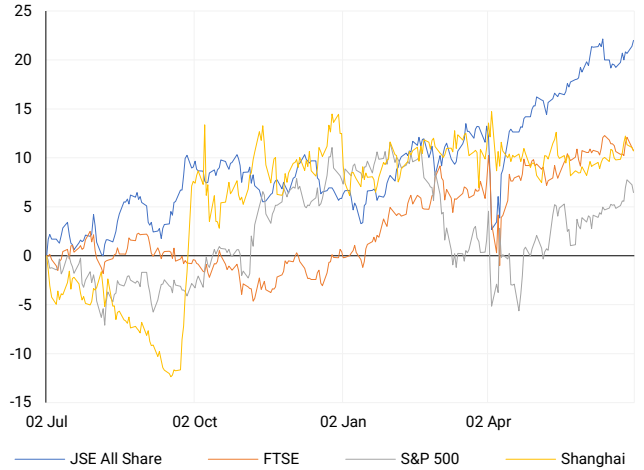
COMPANY	CODE	EXPECTED DIVIDEND	COMPANY	CODE	EXPECTED DIVIDEND
Mr Price Group	MRP	593 ZARc	Clicks Group	CLS	238 ZARc
Tiger Brands	TBS	415 ZARc	Primary Health Properties plc	PHP	1.7 GBPP
Vukile Property Fund	VKE	76 ZARc	--	--	--
Stor-Age Property REIT	SSS	53 ZARc	--	--	--
RFG Holdings	RFG	29 ZARc	--	--	--

SOURCES | JSE, IRESS, MONEYWEB, CNBC, BBC, CNN

PLEASE SEE THE BOTTOM OF THE LAST PAGE FOR THE FULL DISCLAIMER

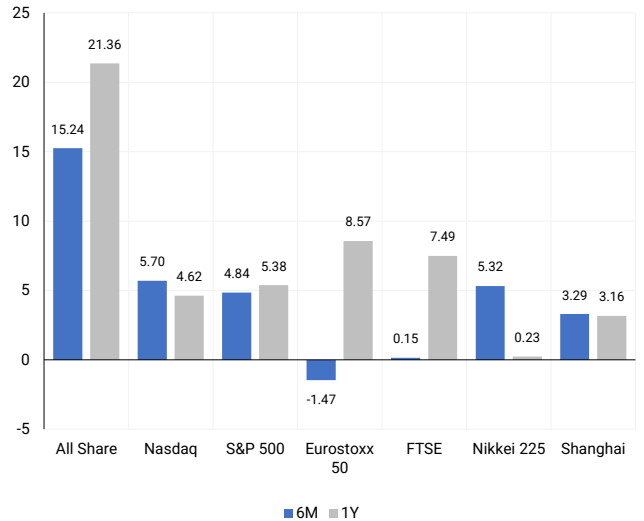
INTERNATIONAL INDICES

Normalised percentage performances - In rand terms



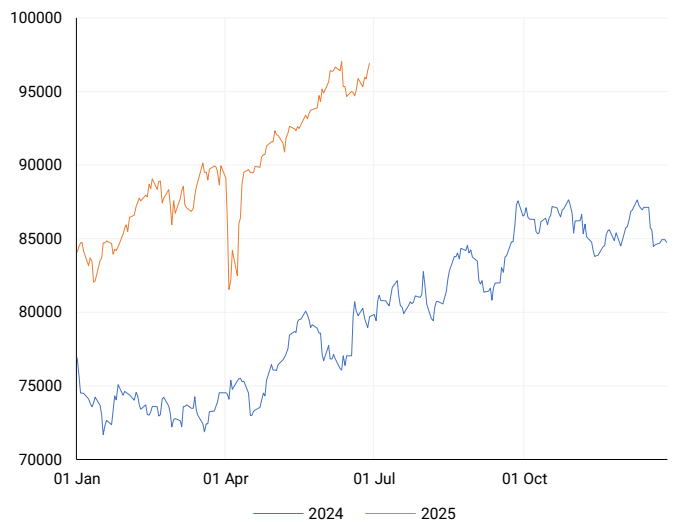
INTERNATIONAL INDICES

6-month & 1-year percentage performances



JSE ALL SHARE INDEX

2024 v 2025 to date



Ex Div Wed, 02 July

## LOCAL EQUITIES | JSE LARGE CAP COMPANIES (Cents Per Share)

COMPANY	CLOSE	PREVIOUS	1D%	5D%	1M%	YTD%
Absa Group Limited	17769	17600	0.96	0.59	2.52	-6.36
Anglo American plc	52228	52565	-0.64	5.08	-2.73	-5.36
Anglo American Plat Ltd	79974	79031	1.19	5.95	13.48	40.56
Anglogold Ashanti Ltd	81228	80090	1.42	-1.01	5.49	92.94
Anheuser-Busch InBev SA NV	122586	121861	0.59	-2.87	-3.19	30.69
BHP Group Limited	42585	42694	-0.26	1.32	-3.27	-7.50
BID Corporation Ltd	46800	46743	0.12	1.97	-1.75	8.69
British American Tob plc	82512	84080	-1.86	-4.34	1.87	21.96
Compagnie Fin Richemont	332591	333099	-0.15	0.89	-1.75	19.81
Capitec Bank Hldgs Ltd	356026	355096	0.26	-0.56	3.30	13.59
Discovery Ltd	21731	21480	1.17	0.95	-0.35	11.57
Firststrand Ltd	7620	7569	0.67	2.47	2.27	0.32
Gold Fields Ltd	42169	41578	1.42	0.32	4.03	70.66
Glencore plc	7025	6955	1.01	4.38	1.36	-15.89
Impala Platinum Hlgs Ltd	16177	15893	1.79	3.67	25.29	84.35
Kumba Iron Ore Ltd	28694	28504	0.67	1.91	-2.62	-12.05
Mondi plc	29126	29108	0.06	1.30	-0.99	4.96
MTN Group Ltd	14200	14084	0.82	7.99	13.60	54.36
Naspers Ltd -N-	547088	551538	-0.81	-0.73	5.95	31.09
Prosus N.V.	97510	99161	-1.66	-1.80	5.98	30.18
South32 Limited	3464	3413	1.49	3.53	-0.43	-13.14
Standard Bank Group Ltd	22775	22753	0.10	-2.89	-2.35	2.70
Shoprite Holdings Ltd	28159	27695	1.68	1.03	-3.57	-4.38
Sanlam Limited	8971	8867	1.17	0.15	1.23	3.26
Sasol Limited	7961	7876	1.08	-1.67	-1.98	-4.40
Sibanye Stillwater Ltd	3266	3226	1.24	5.59	19.11	118.02
Vodacom Group Ltd	13984	13670	2.30	4.66	1.50	37.96

## SOUTH AFRICAN MARKET SUMMARY

### SELECTED ITEMS

The Top 40 index advanced 0.49% to 89,195.7 points, while the All Share gained 0.5% to 96,911.4, buoyed by optimism over infrastructure funding and a modest rebound in manufacturing sentiment. South Africa secured a \$474.6 million loan from the African Development Bank, complementing the recent \$1.5 billion World Bank facility to support key infrastructure projects. June's Absa PMI rose to 48.5, underpinned by improved new orders, though production remained constrained by logistics inefficiencies. With Q1 2025 growth stagnating, Pretoria is seeking to extend negotiations with the US ahead of the 9 July tariff deadline.

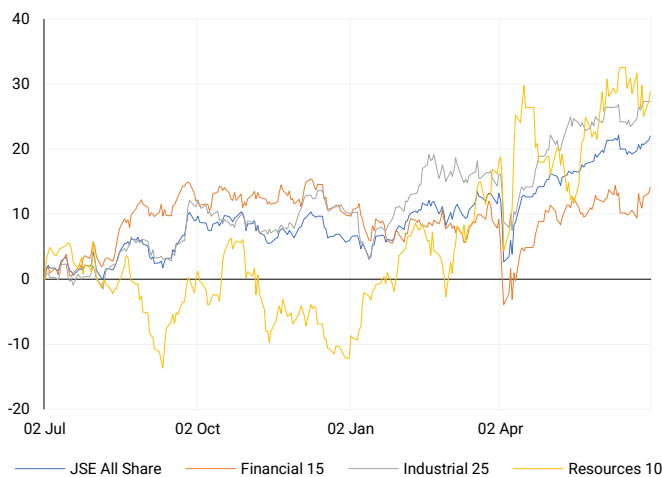
### JSE ALL SHARE

One-year



### LOCAL INDICES

Normalised percentage performances



### LOCAL SENS ANNOUNCEMENTS

#### SELECTED RELEASE

#### Impala Platinum – Consolidation of Impala and IBR Operations

Impala Platinum Limited and Impala Bafokeng Resources, both subsidiaries of Implats, will consolidate operations effective 1 July 2025 to align legal structures, streamline reporting lines, and realise long-term operational synergies. This strategic move responds to ongoing pressure from low rand PGM prices and aims to enhance profitability and sustainability. The transaction involves no change in shareholding or related party dealings and carries no cash consideration, with IBR's full business operations transferring to Impala as a going concern under tax rollover provisions.

**IMP | +1.79% | Open : 15968 | High : 16245 | Low : 15611 | Close : 16177 | 10:03**

#### Acision – Strong FY25 Performance with Higher Dividend Declared

Acision Limited reported solid audited results for the year ended 28 February 2025, with revenue up 6.42% to R1.525 billion and headline earnings per share rising 29.50% to 139.04 cents. Earnings per share surged 52.86% to 412.97 cents, while net asset value per share grew 12.55% to 2 996.31 cents. Reflecting this robust performance, the board declared a final gross cash dividend of 20 cents per share (FY24: 18 cents), totalling R78.99 million, based on 394.96 million shares in issue.

**ACS | +26.23% | Open : 762 | High : 824 | Low : 762 | Close : 770 | 12:30**

#### Numeral – Group Results Show Strong Turnaround in FY25

Numeral Limited delivered a significant improvement in its audited group results for the year ended 28 February 2025, transitioning from company-only results in the prior year. Group revenue surged by 1 939% to USD 1.69 million, with operating profit rising 1 057% to USD 250 035. Both headline and basic earnings per share increased by 700% to USD 0.014. No dividend was declared for the period.

**XII | 0.00% | Open : 3 | High : 3 | Low : 3 | Close : 3 | 14:18**

### EXPECTED COMPANY REPORTING SCHEDULE

COMPANY	CODE	RELEASE	DATE
Sail Mining Group	SGP	Final	Thu, 03 Jul
PSV	PSV	Final	Thu, 03 Jul
Conduit Capital	CND	Final	Thu, 03 Jul
Sail Mining Group	SGP	Final	Thu, 03 Jul
PSV	PSV	Final	Thu, 03 Jul

### BANK AND OTHER SELECTE PREFERENCE SHARES

COMPANY	CODE	CLOSE	CLEAN YIELD	NEXT LDT (Est.)
Investec Limited	INPR	9890	9.12	Tue, 10 Jun '25
Standard Bank	SBPP	9870	8.86	Wed, 03 Sept '25
Capitec	CPIP	10725	8.77	Wed, 17 Sept '25
Grindrod	GNDP	9700	10.34	Wed, 17 Sept '25
Netcare	NTCP	8879	10.49	Wed, 12 Nov '25
Discovery	DSBP	11899	9.52	Wed, 17 Sept '25

**LOCAL EQUITIES | JSE MID CAP COMPANIES** (Cents Per Share)

COMPANY	CODE	CLOSE	PREVIOUS	1D%	1M%	YTD%
Aspen Pharmacare Hldgs Ltd	APN	11961	11949	0.10	-1.27	-27.44
African Rainbow Min Ltd	ARI	17449	17207	1.41	10.12	16.03
AVI Ltd	AVI	9452	9413	0.41	0.07	-13.85
Barloworld Ltd	BAW	11380	11291	0.79	6.36	4.86
Bidvest Ltd	BVT	23534	23352	0.78	-3.39	-10.74
Boxer	BOX	7013	6926	1.26	6.52	8.90
Bytes Technology Grp PLC	BYI	12156	12600	-3.52	-4.82	23.65
Capital&Counties Prop plc	CCO	3860	3876	-0.41	7.97	23.44
Clicks Group Ltd	CLS	37918	37100	2.20	-2.32	1.63
Dis-Chem Pharmacies Ltd	DCP	3228	3230	-0.06	-3.64	-10.58
Exxaro Resources Ltd	EXX	15000	14693	2.09	2.04	-5.03
Fortress Real Est INV B	FFB	2029	2008	1.05	0.55	0.15
Growthpoint Prop Ltd	GRT	1365	1339	1.94	1.19	7.23
Harmony GM Co Ltd	HAR	24925	24481	1.81	-2.54	65.42
Hammerson plc	HMN	7389	7426	-0.50	6.81	10.78
Investec Ltd	INL	13274	13226	0.36	4.27	6.16
Investec plc	INP	13165	13217	-0.39	2.30	3.91
Italtile Ltd	ITE	999	1000	-0.10	-1.09	-29.35
Life Healthc Grp Hldgs Ltd	LHC	1406	1428	-1.54	-1.75	-14.16
MultiChoice Group Ltd	MCG	11800	11742	0.49	0.94	9.26
Montauk Renewables Inc	MKR	4360	4024	8.35	15.34	-47.47
Mr Price Group Ltd	MRP	22481	22143	1.53	-6.84	-23.86
Momentum Met Hldgs Ltd	MTM	3456	3429	0.79	-0.97	14.21
Ninety One Plc	N91	4493	4467	0.58	14.47	30.69
Nedbank Group Ltd	NED	24423	24305	0.49	-4.41	-13.30
Northam Platinum Hldgs Ltd	NPH	19640	19171	2.45	29.68	101.62
NEPI Rockcastle N.V.	NRP	13530	13495	0.26	-2.16	-1.95
Netcare Limited	NTC	1398	1395	0.22	-7.36	-6.30
Ninety One Limited	NY1	4370	4335	0.81	14.07	26.15
Old Mutual Limited	OMU	1227	1207	1.66	5.14	-1.92
OUTsurance Group Ltd	OUT	7850	7833	0.22	3.36	18.05
Pick n Pay Stores Ltd	PIK	2706	2680	0.97	-0.55	-11.86
Pepkor Holdings Ltd	PPH	2784	2723	2.24	-4.62	-3.83
Quilter Plc	QLT	3802	3802	0.00	5.96	6.92
Redefine Properties Ltd	RDF	460	458	0.44	-1.71	1.10
Remgro Ltd	REM	16200	15820	2.40	1.58	4.45
Resilient REIT Limited	RES	6203	6030	2.87	0.83	5.57
Reinet Investments S.C.A	RNI	59940	57615	4.04	23.02	34.05
Sappi Ltd	SAP	2952	2976	-0.81	-14.51	-40.07
Santam Limited	SNT	42982	42800	0.43	2.34	9.47
The Spar Group Ltd	SPP	10889	10785	0.96	-2.05	-25.46
Sirius Real Estate Ltd	SRE	2338	2370	-1.35	1.52	27.07
Tiger Brands Ltd	TBS	32044	31888	0.49	-7.44	10.87
Transaction Capital Ltd	TCP	130	136	-4.41	-7.14	-46.72
The Foschini Group Limited	TFG	13309	12892	3.23	-0.97	-20.78
Thungela Resources Ltd	TGA	8581	8479	1.20	-6.02	-35.81
Telkom SA SOC Ltd	TKG	5293	5398	-1.95	35.93	51.36
Truworths Int Ltd	TRU	7213	7142	0.99	-1.76	-30.38
Woolworths Holdings Ltd	WHL	5212	5176	0.70	-11.06	-16.41
Zeda Limited	ZZD	1260	1231	2.36	6.33	-5.26

**LOCAL EQUITIES | JSE SMALL CAP COMPANIES** (Cents Per Share)

COMPANY	CODE	CLOSE	PREVIOUS	1D%	1M%	YTD%
ArcelorMittal SA Limited	ACL	104	105	-0.95	-10.34	-22.39
ADvTECH Ltd	ADH	3279	3271	0.24	1.99	-3.10
Altron Limited A	AEL	2207	2209	-0.09	-6.40	3.86
AECI Limited	AFE	10083	10599	-4.87	-2.44	15.34
Alexander Forbes Grp Hldgs	AFH	870	900	-3.33	-2.25	6.75
Afrimat Limited	AFT	4500	4394	2.41	-13.46	-36.58
African Rainbow Cap Inv	AIL	3	3	0.00	0.00	-99.68
Adcock Ingram Hldgs Ltd	AIP	5050	5040	0.20	-3.44	-24.63
Astral Foods Ltd	ARL	18089	17758	1.86	-5.67	-3.27
Attacq Limited	ATT	1418	1406	0.85	-1.80	2.24
Brait PLC	BAT	224	223	0.45	4.19	8.21
Blue Label Telecoms Ltd	BLU	1440	1430	0.70	21.52	146.58
Burstone Group	BTN	814	812	0.25	-10.25	-13.40
Coronation Fund Mngrs Ld	CML	3990	3953	0.94	1.01	1.89
Curro Holdings Limited	COH	909	901	0.89	-4.32	-30.34
Cashbuild Ltd	CSB	15000	15400	-2.60	4.16	-29.11
DRD Gold Ltd	DRD	2421	2373	2.02	-9.33	46.46
Datalec Ltd	DTC	6659	6524	2.07	5.83	33.53
Emira Property Fund Ltd	EMI	1098	1101	-0.27	0.92	0.73
Equites Prop Fund Ltd	EQU	1519	1512	0.46	-8.88	3.33
Famous Brands Ltd	FBR	6410	6270	2.23	0.31	-7.10
Fairvest Limited B	FTB	522	522	0.00	0.38	9.43
Grindrod Ltd	GND	1230	1247	-1.36	-7.24	2.84
Hosken Cons Inv Ltd	HCI	12814	12725	0.70	-8.18	-21.87
Hudaco Industries Ltd	HDC	19700	19787	-0.44	-0.26	-8.80
Hyprop Inv Ltd	HYP	4308	4276	0.75	-2.09	-7.30
JSE Ltd	JSE	13400	13326	0.56	1.14	11.00
KAP Industrial Hldgs Ltd	KAP	205	205	0.00	-18.97	-33.22
Karooooo Ltd	KRO	89487	88485	1.13	-10.96	2.86
PSG Konsult Limited	KST	2228	2213	0.68	5.44	13.56
Libstar Holdings Ltd	LBR	316	315	0.32	-1.25	-27.36
Lighthouse Properties plc	LTE	820	813	0.86	-3.53	2.12
Industrials REIT Limited	MLI	38	40	-5.00	-24.00	46.15
MAS P.L.C	MSP	2379	2427	-1.98	19.49	2.10
Metair Investments Ltd	MTA	750	750	0.00	-12.89	-23.86
Motus Holdings Ltd	MTH	9400	9408	-0.09	4.91	-22.64
Murray & Roberts Hldgs	MUR	110	110	0.00	0.00	0.00
Oceana Group Ltd	OCE	5250	5237	0.25	-11.18	-22.20
Omnia Holdings Ltd	OMN	7869	7950	-1.02	10.24	0.76
Pan African Resource plc	PAN	1125	1109	1.44	2.93	37.36
PPC Limited	PPC	505	517	-2.32	7.91	-1.94
Raubex Group Ltd	RBX	4485	4450	0.79	9.66	-15.38
RFG Holdings Limited	RFG	1681	1700	-1.12	-7.89	-18.75
Reunert Ltd	RLO	5599	5750	-2.63	-6.29	-25.35
SA Corp Real Estate Ltd	SAC	310	312	-0.64	0.32	6.16
Super Group Ltd	SPG	1551	1581	-1.90	-48.64	-47.42
Stor-Age Prop REIT Ltd	SSS	1600	1595	0.31	0.31	2.70
Southern Sun LTD	SSU	893	882	1.25	-0.11	-1.65
Sun International Ltd	SUI	4412	4369	0.98	7.35	1.43
Tharisa plc	THA	2090	2069	1.01	29.41	28.85
Tsogo Sun Gaming Ltd	TSG	768	767	0.13	-2.17	-24.71
Vukile Property Fund Ltd	VKE	1987	1963	1.22	-0.70	10.57
Wilson Bayly Hlm-Ovc Ltd	WBO	18359	18467	-0.58	1.14	-21.30

**10-YEAR BOND YIELD | SELECTED ITEMS** (Basis Point Change)

REGION	YIELD	1D	1M	1Y
United States	4.25%	1	-19	-18
United Kingdom	4.45%	0	-21	21
Germany	—	—	—	—
Japan	1.42%	4	-8	34
South African 10Y	9.84%	-11	-35	-34

**GLOBAL INTEREST RATES | SELECTED ITEMS**

REGION	DATE CHANGED	CURRENT RATE
United States	Nov '24	4.50%-4.75%
United Kingdom	May '25	4.25%
European	Jun '25	2.15%
SA Repo Rate	May '25	7.25%
SA Prime Rate	May '25	10.75%

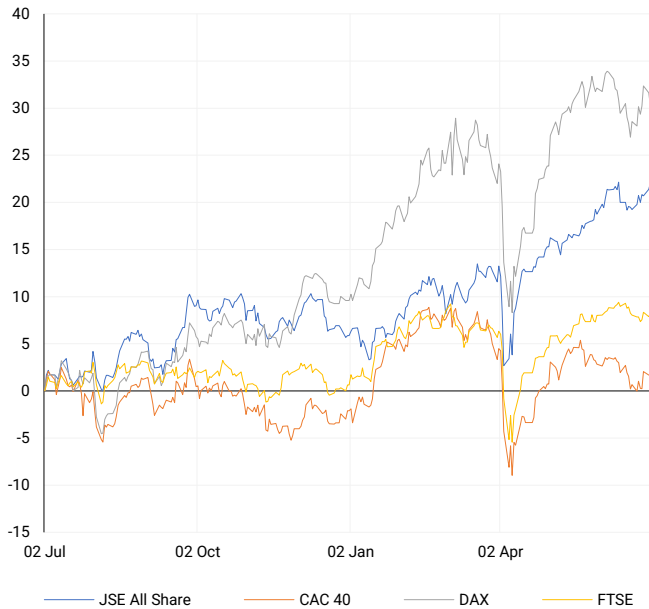
**SOUTH AFRICAN 10-YEAR**

2024 vs 2025 to date



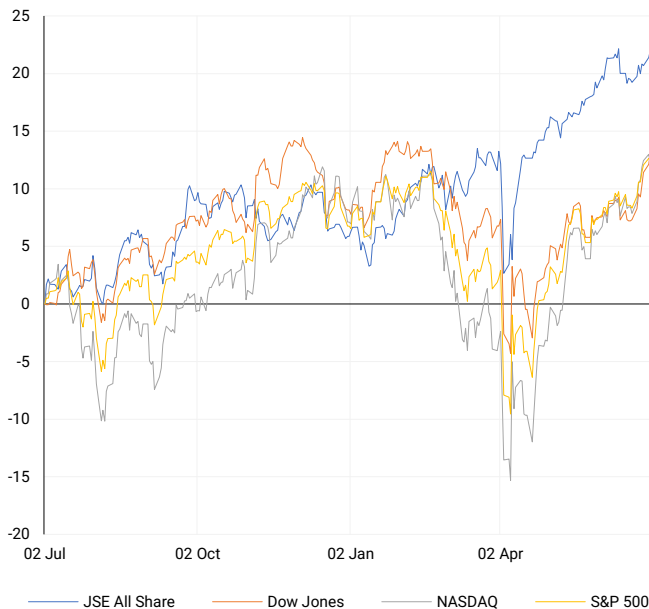
## EUROPEAN INDICES

Normalised percentage performances



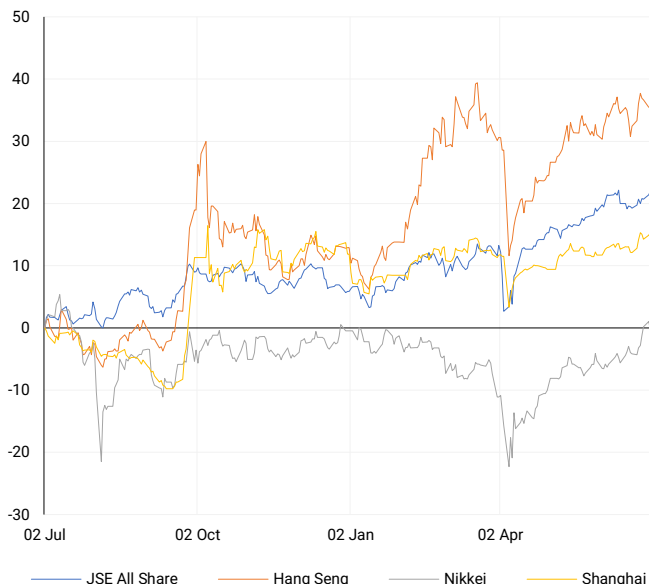
## AMERICAN INDICES

Normalised percentage performances



## ASIAN INDICES

Normalised percentage performances

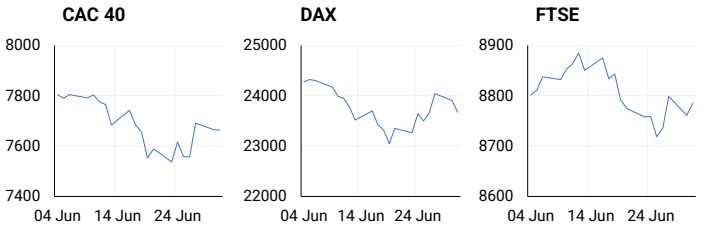


## EUROPEAN MARKET SUMMARY

### SELECTED ITEMS

European equities edged lower as caution prevailed ahead of looming US tariff deadlines and tax policy developments. The STOXX 600 declined 0.2%, led by weakness in industrials and financials, while the FTSE 100 outperformed, rising 0.3%. German unemployment increased by 11,000 in June—less than expected—reflecting ongoing labour market fragility. France saw further deterioration in manufacturing, with PMI falling to 48.1 and car registrations down 6.7% year-on-year. Tesla's June sales dropped 10%, deepening a 39.6% YTD slump, outpacing the broader French market's 7.9% contraction.

EUROPEAN INDICES	CLOSE	PREVIOUS	1D%	5D%	1M%	YTD%
CAC 40	7662.59	7665.91	-0.04	0.61	-1.15	3.82
DAX 30	23671.27	23909.61	-1.00	0.13	-1.36	18.90
Eurostoxx 50	5286.50	5310.00	-0.44	-0.24	-1.47	7.98
FTSE	8785.33	8760.96	0.28	0.30	0.15	7.49



## AMERICAN MARKET SUMMARY

### SELECTED ITEMS

US equities closed mixed amid thin volumes, with the Nasdaq and S&P 500 under pressure from tech weakness, while the Dow posted modest gains. Markets weighed stimulus hopes from a newly passed tax bill against its fiscal implications, as President Trump reaffirmed the 9 July trade deadline. Tesla shares fell 5.4% amid renewed tensions between Musk and Trump. Job openings unexpectedly rose in May, reinforcing labour market resilience and driving Treasury yields higher. The ISM manufacturing PMI edged up to 49.0, as attention shifts to upcoming nonfarm payrolls data to gauge Fed policy direction.

AMERICAN INDICES	CLOSE	PREVIOUS	1D%	5D%	1M%	YTD%
Dow Jones	44494.94	44094.77	0.91	3.26	5.26	4.59
Nasdaq	20202.89	20369.73	-0.82	1.46	5.70	4.62
S&P 500	6198.01	6204.95	-0.11	1.74	4.84	5.38
US VIX	16.83	16.73	0.60	-3.72	-9.37	-3.00



## ASIAN MARKET SUMMARY

### SELECTED ITEMS

Asian markets delivered mixed performance, with Singapore equities reaching record highs following Fed Chair Powell's indication that tariffs are delaying rate cuts. South Korea's inflation exceeded expectations at 2.2% in June, while core inflation held steady. India's manufacturing PMI climbed to a 14-month peak of 58.4, supported by strong export demand and record hiring. Japan's BoJ Governor Ueda reiterated that core inflation remains below target, reinforcing the bank's cautious stance on normalisation.

ASIAN INDICES	CLOSE	PREVIOUS	1D%	5D%	1M%	YTD%
Hang Seng	24072.28	24072.28	0.00	-0.43	3.36	20.00
Nikkei 225	39986.33	40487.39	-1.24	3.08	5.32	0.23
Shanghai	3457.75	3444.43	0.39	1.09	3.29	3.16



## COMMODITIES MARKET SUMMARY

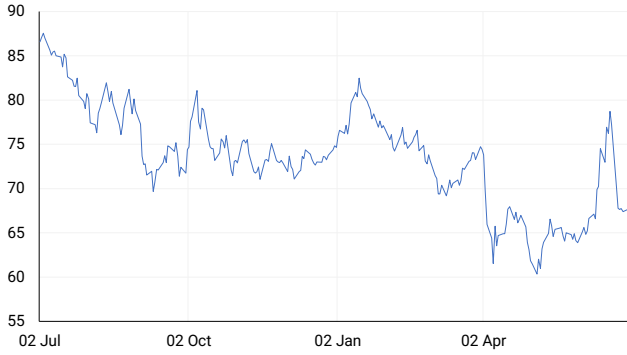
### SELECTED ITEMS

Gold prices eased as investors awaited US payroll data, although a weaker dollar helped cushion losses. Oil prices were largely unchanged, with markets assessing increased supply expectations from producers against subdued demand signals in the US. Separately, the methane-monitoring satellite MethaneSAT, backed by Jeff Bezos and pivotal for tracking emissions across the energy sector, was reported lost in space, potentially limiting future data availability.

COMMODITY	LAST	CLOSE	% CHG	1D%	5D%	YTD%
Brent Crude	67.16	67.22	-0.09	-0.61	-0.84	-10.17
Gold	3340.30	3338.83	0.04	1.09	0.47	27.22
Palladium	1119.56	1104.86	1.33	0.02	3.31	24.35
Platinum	1360.21	1356.41	0.28	-0.20	2.72	51.81
Silver	36.06	36.03	0.08	-0.22	0.28	24.76

## BRENT CRUDE

One-year



## PLATINUM

One-year



## GOLD

One-year



## CURRENCY MARKET SUMMARY

### SELECTED ITEMS

The rand and local bonds firmed on signs of disinflation, while sterling approached a three-year high, driven by broad-based dollar weakness. The greenback remained under pressure, nearing multi-year lows against key currencies amid dovish Fed signals and uncertainty surrounding the fiscal trajectory of Trump's proposed spending bill. Notably, the US dollar hit its weakest levels since 2022 against the euro and since 2015 versus the Swiss franc, reflecting rising investor rotation into alternative currencies.

CURRENCY PAIR	LAST	CLOSE	% CHG	1D%	5D%	YTD%
USDZAR	17.60	17.60	0.02	-0.61	-0.92	-6.59
GBPZAR	24.19	24.18	0.04	-0.56	0.02	2.35
EURZAR	20.77	20.78	-0.05	-0.48	0.75	6.34
AUDZAR	11.58	11.58	0.01	-0.58	0.50	-0.79
EURUSD	1.18	1.18	-0.07	0.16	1.69	14.03
USDJPY	143.57	143.42	0.11	-0.43	-1.05	-8.80
GBPUSD	1.37	1.37	-0.01	0.10	0.97	9.85
USDCHF	0.79	0.79	0.02	-0.25	-1.76	-12.82

## CURRENCY PAIRS vs JSE ALL SHARE

Normalised percentage performances



## USDZAR

One-year



## EURUSD

One-year



SOURCES | JSE, IRESS, MONEYWEB, CNBC, BBC, CNN

**Disclaimer:** This note is prepared for Sanlam Private Wealth (Pty) Ltd, by K2013143132 (Pty) Ltd trading as ThompsonGreen. ThompsonGreen is an independent company contracted to Sanlam Private Wealth (Pty) Ltd. The views expressed in this note are those of ThompsonGreen and/or its analysts and not necessarily the views of Sanlam Private Wealth (Pty) Ltd, Sanlam or any officer or agent thereof. K2013143132 (Pty) Ltd trading as ThompsonGreen is a research house and not a registered broker, financial adviser or financial service provider. Our editors and customer services teams also do not give personal investment advice. The information in this document is general advice only and may not be appropriate to your particular investment objectives, financial situation or particular needs. Before investing, or if you are in any doubt about your personal situation, you should seek professional advice from a stockbroker or independent financial adviser authorised by the Financial Sector Conduct Authority.