

GLOBAL OVERVIEW | SELECTED INDICES

SOUTH AFRICAN INDICES						
	CLOSE	PREVIOUS	1D%	5D%	1M%	YTD%
All Share	96937.03	96609.37	0.34	1.01	2.17	15.27
Top 40	89165.21	88958.75	0.23	0.87	2.28	18.29
Financial 15	21461.85	21229.35	1.10	3.08	2.21	4.14
Industrial 25	136350.57	135771.57	0.43	-0.01	1.63	14.89
Resource 10	76705.74	77448.25	-0.96	0.01	3.19	47.77
Mid Cap	98630.53	98106.38	0.53	2.49	4.35	10.29
Small Cap	93198.78	92593.90	0.65	1.70	1.22	-0.20
Banks	12919.34	12756.37	1.28	2.48	1.95	2.02
Retailers	7133.15	6978.50	2.22	3.45	-2.37	-16.24
Property (J253) - TR	2528.97	2517.39	0.46	0.63	-0.88	5.22

AMERICAN INDICES						
	CLOSE	PREVIOUS	1D%	5D%	1M%	YTD%
Dow Jones	44828.53	44484.42	0.77	3.32	5.43	5.37
Nasdaq	20601.10	20393.13	1.02	2.15	6.20	6.68
S&P 500	6279.35	6227.42	0.83	2.25	5.18	6.76
US VIX	16.38	16.64	-1.56	-1.27	-7.41	-5.59

EUROPEAN INDICES						
	CLOSE	PREVIOUS	1D%	5D%	1M%	YTD%
CAC 40	7754.55	7738.42	0.21	2.61	-0.12	5.06
DAX 30	23934.13	23790.11	0.61	1.20	-0.69	20.22
Eurostoxx 50	5343.40	5320.20	0.44	1.78	0.11	9.14
FTSE	8823.20	8774.69	0.55	1.00	0.41	7.96

ASIAN INDICES						
	CLOSE	PREVIOUS	1D%	5D%	1M%	YTD%
Hang Seng	24069.94	24221.41	-0.63	-1.05	2.37	19.99
Nikkei 225	39785.90	39762.48	0.06	0.51	6.25	-0.27
Shanghai	3461.15	3454.79	0.18	0.37	2.95	3.26

EARLY MORNING MARKETS						
	LAST	CLOSE	% CHG	1D%	5D%	YTD%
TENCENT	499.40	501.00	-0.32	-0.10	-2.34	20.38
BHP AUS	3868	3927	-1.50	5.56	8.72	1.32

NOTE: 5D% and 1M% are rolling percentage moves

INTERNATIONAL ECONOMIC CALENDAR | SELECTED EVENTS

TIME	AREA	TODAY'S EVENTS & RELEASES	PERIOD	EXP.	PREV.
--	US	Bank Holiday	--	--	--
11:00	EU	PPI m/m	--	-0.60%	2.20%
--	--	--	--	--	--
--	--	--	--	--	--
--	--	--	--	--	--

TIME	AREA	PREVIOUS SESSION'S RELEASES	PERIOD	EXP.	ACT.
09:15	SA	S&P Global PMI	Jun	50.4	50.1
14:30	US	Average Hourly Earnings m/m	--	0.30%	0.20%
14:30	US	Non-Farm Employment Change	--	111k	147k
14:30	US	Unemployment Rate	--	4.30%	4.10%
--	--	--	--	--	--

JSE ALL SHARE | BEST AND WORST ONE-DAY PERFORMERS

BEST ONE-DAY % PERFORMERS					
	CODE	CLOSE	1D%	5D%	YTD%
Remgro Ltd	REM	17123	4.27	10.85	10.40
Truworths Int Ltd	TRU	7362	3.76	5.17	-28.95
RCL Foods Limited	RCL	1089	3.71	-1.00	14.63
Pan African Resource plc	PAN	1165	3.37	3.37	42.25
Alexander Forbes Grp Hldgs	AFH	863	3.23	3.98	5.89
Life Health Grp Hldgs Ltd	LHC	1461	3.18	4.88	-10.81

WORST ONE-DAY % PERFORMERS					
	CODE	CLOSE	1D%	5D%	YTD%
Reinet Investments S.C.A	RNI	57673	-3.44	12.95	28.98
Anglo American Plat Ltd	AMS	80760	-2.91	-0.52	41.95
Impala Platinum Hlgs Ltd	IMP	16294	-2.78	-0.76	85.69
Metair Investments Ltd	MTA	730	-2.54	-1.08	-25.89
Northam Platinum Hldgs Ltd	NPH	19270	-2.50	-2.93	97.82

DIVIDEND DATA

COMPANY	CODE	EXPECTED DIVIDEND	COMPANY	CODE	EXPECTED DIVIDEND
Capital Appreciation	CTA	7 ZARc	Telkom SA SOC	TKG	163 ZARc
African Media Entertainment	AME	330 ZARc	Zeda	ZZD	55 ZARc
Netcare	NTC	36 ZARc	Vunani	VUN	35 ZARc
Famous Brands	FBR	195 ZARc	Bytes Technology Group	BYI	6.9 GBPP
Premier Group	PMR	271 ZARc	--	--	--

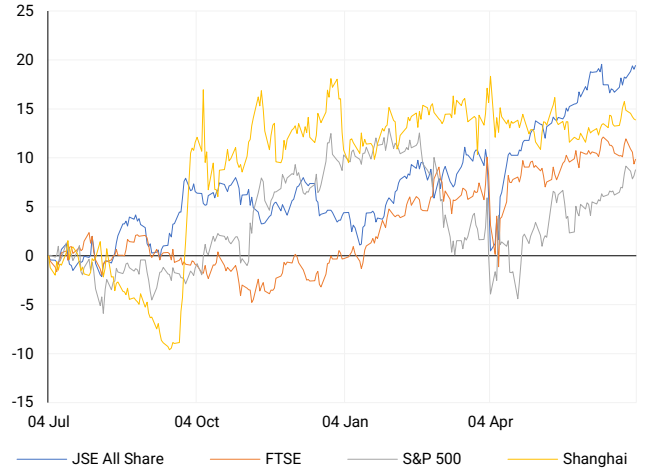
Last date to trade: Tue, 08 July

SOURCES | JSE, IRESS, MONEYWEB, CNBC, BBC, CNN

PLEASE SEE THE BOTTOM OF THE LAST PAGE FOR THE FULL DISCLAIMER

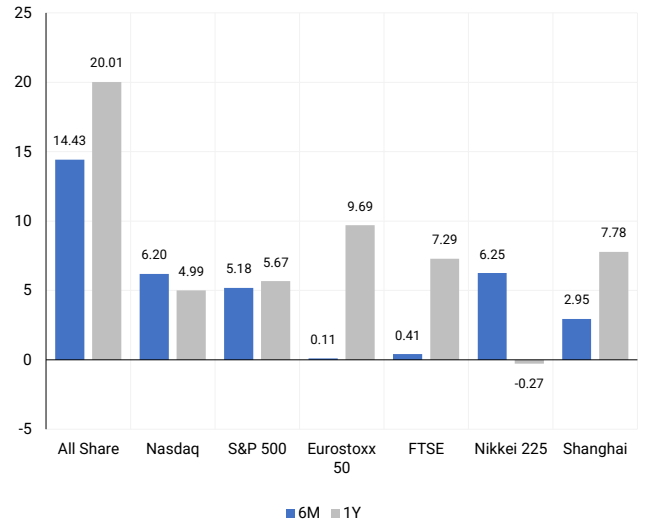
INTERNATIONAL INDICES

Normalised percentage performances - In rand terms



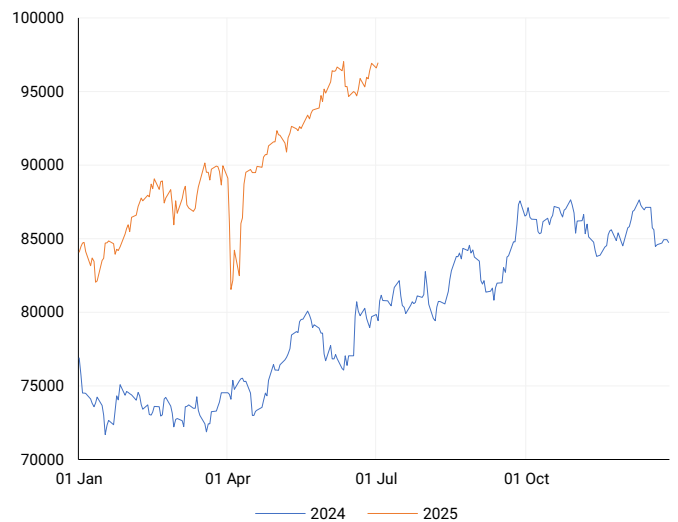
INTERNATIONAL INDICES

6-month & 1-year percentage performances



JSE ALL SHARE INDEX

2024 v 2025 to date



LOCAL EQUITIES | JSE LARGE CAP COMPANIES (Cents Per Share)

COMPANY	CLOSE	PREVIOUS	1D%	5D%	1M%	YTD%
Absa Group Limited	18050	17600	2.56	5.70	4.54	-4.87
Anglo American plc	53614	54700	-1.99	2.18	1.93	-2.85
Anglo American Plat Ltd	80760	83183	-2.91	-0.52	19.41	41.95
Anglogold Ashanti Ltd	81174	81134	0.05	-1.89	-1.61	92.81
Anheuser-Busch InBev SA NV	121065	121600	-0.44	-1.49	-4.22	29.07
BHP Group Limited	44164	44133	0.07	3.32	1.68	-4.07
BID Corporation Ltd	46319	46384	-0.14	0.69	-1.57	7.58
British American Tob plc	84182	82625	1.88	0.42	2.51	24.42
Compagnie Fin Richemont	330540	335238	-1.40	1.55	-0.37	19.07
Capitec Bank Hldgs Ltd	359772	355530	1.19	3.43	4.99	14.78
Discovery Ltd	22054	21711	1.58	4.14	-0.61	13.23
Firststrand Ltd	7560	7497	0.84	0.76	2.08	-0.47
Gold Fields Ltd	41932	42237	-0.72	-0.96	-4.84	69.70
Glencore plc	7350	7383	-0.45	4.43	7.35	-12.00
Impala Platinum Hlgs Ltd	16294	16760	-2.78	-0.76	29.23	85.69
Kumba Iron Ore Ltd	30088	30350	-0.86	6.41	5.10	-7.78
Mondi plc	29533	29642	-0.37	0.97	2.19	6.43
MTN Group Ltd	14044	13887	1.13	0.32	6.94	52.67
Naspers Ltd -N-	538294	541902	-0.67	-2.40	3.59	28.99
Prosus N.V.	96340	96334	0.01	-2.93	5.13	28.62
South32 Limited	3658	3615	1.19	7.05	7.59	-8.27
Standard Bank Group Ltd	22829	22511	1.41	1.44	-1.03	2.94
Shoprite Holdings Ltd	28374	27695	2.45	2.76	-2.37	-3.65
Sanlam Limited	8953	8829	1.40	2.61	1.24	3.05
Sasol Limited	8775	8631	1.67	9.62	3.88	5.38
Sibanye Stillwater Ltd	3322	3347	-0.75	0.24	19.54	121.76
Vodacom Group Ltd	13903	13832	0.51	2.81	2.65	37.16

SOUTH AFRICAN MARKET SUMMARY

SELECTED ITEMS

South African equities ended marginally higher on Thursday, with the Top 40 and All Share indices gaining 0.23% and 0.34%, respectively. Investor sentiment was shaped by June PMI figures, which indicated stable private sector activity, although business confidence slipped to its lowest level in nearly four years. Meanwhile, BMW South Africa confirmed that uncertainty surrounding potential US tariffs and the renewal of AGOA poses no short-term risk, as its 2025 production plan excludes exports to the United States.

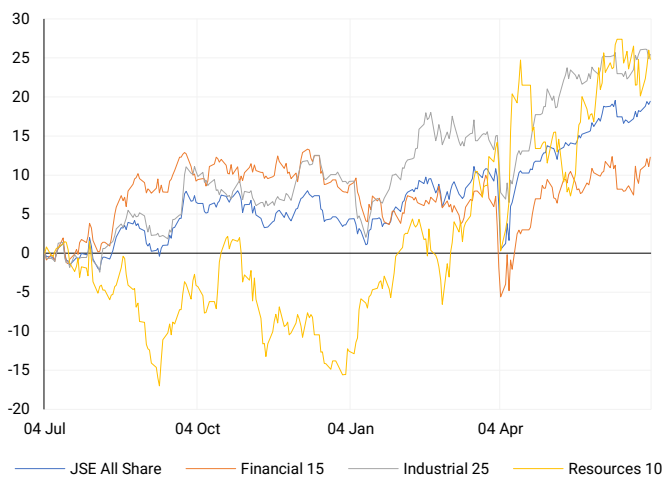
JSE ALL SHARE

One-year



LOCAL INDICES

Normalised percentage performances



LOCAL SENS ANNOUNCEMENTS

SELECTED RELEASE

Hudaco Industries – Solid Interim Earnings and Dividend Growth Despite Revenue Dip

Hudaco Industries reported resilient unaudited interim results for the six months ended 31 May 2025, with a 2.4% decline in revenue to R3.89 billion offset by a 19.9% surge in basic earnings per share to 941 cents and a 19.6% increase in headline earnings per share. Operating profit edged up 1.5% to R419 million, while the interim dividend rose 7.7% to 350 cents per share. The company declared its 76th interim dividend, payable on 11 August 2025. Notably, NAV per share grew 6.5% to 12,174 cents, reflecting ongoing capital strength. On governance, Tlaleng Moabi will succeed Nyami Mandindi on key board committees following Mandindi's retirement on 31 October 2025, ensuring continuity in leadership and oversight.

HDC | +1.29% | Open : 19307 | High : 19700 | Low : 18917 | Close : 19700 | 17:40

Alphamin Resources – Q2 Tin Sales Surge and EBITDA Guidance Upgraded

Alphamin Resources reported a solid operational performance for Q2 2025, with tin sales rising 19% quarter-on-quarter to 4,587 tonnes, despite slightly lower production of 4,106 tonnes due to a phased restart from mid-April. EBITDA guidance was raised to US\$75 million, up from US\$62 million in Q1, underpinned by improved sales volumes and pricing. The quarter also saw a notable turnaround in liquidity, with net cash increasing by US\$52 million to US\$50 million. Additionally, the company resumed exploration drilling at Mpama South, intersecting visible mineralisation, marking a key milestone in its growth strategy.

APH | 0.00% | Open : 1149 | High : 1149 | Low : 1149 | Close : 1149 | 15:15

EXPECTED COMPANY REPORTING SCHEDULE

COMPANY	CODE	RELEASE	DATE
Karoo000	KRO	Quarterly	Fri, 18 Jul
Valterra Platinum	VAL	Interim	Tue, 22 Jul
Visual International	VIS	Final	Tue, 22 Jul
Karoo000	KRO	Quarterly	Fri, 18 Jul
Valterra Platinum	VAL	Interim	Tue, 22 Jul

BANK AND OTHER SELECTE PREFERENCE SHARES

COMPANY	CODE	CLOSE	CLEAN YIELD	NEXT LDT (Est.)
Investec Limited	INPR	9840	9.17	Tue, 10 Jun '25
Standard Bank	SBPP	9899	8.84	Wed, 03 Sept '25
Capitec	CPIP	10725	8.77	Wed, 17 Sept '25
Grindrod	GNDP	9720	10.33	Wed, 17 Sept '25
Netcare	NTCP	8879	10.50	Wed, 12 Nov '25
Discovery	DSBP	11900	9.52	Wed, 17 Sept '25

LOCAL EQUITIES | JSE MID CAP COMPANIES (Cents Per Share)

COMPANY	CODE	CLOSE	PREVIOUS	1D%	1M%	YTD%
Aspen Pharmacare Hldgs Ltd	APN	12219	12000	1.83	2.24	-25.88
African Rainbow Min Ltd	ARI	17657	17982	-1.81	10.82	17.41
AVI Ltd	AVI	9735	9500	2.47	4.67	-11.27
Barloworld Ltd	BAW	11501	11450	0.45	7.49	5.97
Bidvest Ltd	BVT	23800	23602	0.84	-1.05	-9.74
Boxer	BOX	7132	7065	0.95	11.61	10.75
Bytes Technology Grp PLC	BYI	8600	8600	0.00	-32.06	-12.52
Capital&Counties Prop plc	CCO	3740	3710	0.81	6.34	19.60
Clicks Group Ltd	CLS	37586	37311	0.74	-1.14	0.74
Dis-Chem Pharmacies Ltd	DCP	3302	3204	3.06	0.09	-8.53
Exxaro Resources Ltd	EXX	15557	15464	0.60	6.83	-1.51
Fortress Real Est INV B	FFB	2016	2000	0.80	-0.10	-0.49
Growthpoint Prop Ltd	GRT	1344	1333	0.83	-1.10	5.58
Harmony GM Co Ltd	HAR	24990	24989	0.00	-4.80	65.85
Hammerson plc	HMN	7150	7140	0.14	3.70	7.20
Investec Ltd	INL	13327	13282	0.34	5.80	6.58
Investec plc	INP	13228	13155	0.55	5.08	4.40
Italtile Ltd	ITE	995	1000	-0.50	-0.50	-29.63
Life Healthc Grp Hldgs Ltd	LHC	1461	1416	3.18	3.11	-10.81
MultiChoice Group Ltd	MCG	11780	11790	-0.08	1.46	9.07
Montauk Renewables Inc	MKR	4611	4698	-1.85	37.64	-44.45
Mr Price Group Ltd	MRP	22129	21657	2.18	-7.89	-25.05
Momentum Met Hldgs Ltd	MTM	3380	3354	0.78	-4.11	11.70
Ninety One Plc	N91	4491	4425	1.49	15.36	30.63
Nedbank Group Ltd	NED	24505	24127	1.57	-3.81	-13.01
Northam Platinum Hldgs Ltd	NPH	19270	19765	-2.50	28.13	97.82
NEPI Rockcastle N.V.	NRP	13405	13421	-0.12	-1.85	-2.86
Netcare Limited	NTC	1429	1393	2.58	-4.03	-4.22
Ninety One Limited	NY1	4359	4305	1.25	13.52	25.84
Old Mutual Limited	OMU	1222	1209	1.08	4.53	-2.32
OUTsurance Group Ltd	OUT	7762	7802	-0.51	-0.15	16.72
Pick n Pay Stores Ltd	PIK	2764	2700	2.37	3.60	-9.97
Pepkor Holdings Ltd	PPH	2795	2734	2.23	-1.41	-3.45
Quilter Plc	QLT	3721	3664	1.56	2.65	4.64
Redefine Properties Ltd	RDF	454	453	0.22	-5.22	-0.22
Remgro Ltd	REM	17123	16422	4.27	8.14	10.40
Resilient REIT Limited	RES	6164	6094	1.15	1.22	4.90
Reinet Investments S.C.A	RNI	57673	59729	-3.44	19.99	28.98
Sappi Ltd	SAP	3017	3006	0.37	-11.34	-38.75
Santam Limited	SNT	42848	42421	1.01	1.51	9.13
The Spar Group Ltd	SPP	11160	11071	0.80	-0.17	-23.61
Sirius Real Estate Ltd	SRE	2275	2260	0.66	-2.78	23.64
Tiger Brands Ltd	TBS	30611	29914	2.33	-7.77	5.91
Transaction Capital Ltd	TCP	133	131	1.53	-0.75	-45.49
The Foschini Group Limited	TFG	13404	13000	3.11	0.74	-20.21
Thungela Resources Ltd	TGA	9013	8951	0.69	-1.42	-32.58
Telkom SA SOC Ltd	TKG	5261	5186	1.45	29.55	50.44
Truworths Int Ltd	TRU	7362	7095	3.76	2.48	-28.95
Woolworths Holdings Ltd	WHL	5225	5154	1.38	-10.35	-16.20
Zeda Limited	ZZD	1275	1280	-0.39	8.97	-4.14

LOCAL EQUITIES | JSE SMALL CAP COMPANIES (Cents Per Share)

COMPANY	CODE	CLOSE	PREVIOUS	1D%	1M%	YTD%
ArcelorMittal SA Limited	ACL	98	102	-3.92	-14.04	-26.87
AdvTECH Ltd	ADH	3322	3232	2.78	2.53	-1.83
Altron Limited A	AEL	2170	2150	0.93	-7.30	2.12
AECI Limited	AFE	10276	10013	2.63	1.24	17.55
Alexander Forbes Grp Hldgs	AFH	863	836	3.23	-5.68	5.89
Afrimat Limited	AFT	4484	4450	0.76	-12.16	-36.80
African Rainbow Cap Inv	AIL	3	3	0.00	0.00	-99.68
Adcock Ingram Hldgs Ltd	AIP	5022	5000	0.44	-3.24	-25.04
Astral Foods Ltd	ARL	17870	18000	-0.72	-6.46	-4.44
Attacq Limited	ATT	1424	1410	0.99	-2.33	2.67
Brait PLC	BAT	221	219	0.91	-1.78	6.76
Blue Label Telecoms Ltd	BLU	1413	1423	-0.70	16.58	141.95
Burstone Group	BTN	808	810	-0.25	-10.72	-14.04
Coronation Fund Mngrs Ld	CML	3950	3900	1.28	-0.05	0.87
Curro Holdings Limited	COH	912	886	2.93	-4.20	-30.11
Cashbuild Ltd	CSB	15000	14723	1.88	0.68	-29.11
DRD Gold Ltd	DRD	2415	2413	0.08	-14.81	46.10
Datalec Ltd	DTC	6475	6546	-1.08	2.39	29.84
Emira Property Fund Ltd	EMI	1080	1090	-0.92	-1.82	-0.92
Equites Prop Fund Ltd	EQU	1535	1509	1.72	-8.25	4.42
Famous Brands Ltd	FBR	6353	6282	1.13	-0.77	-7.93
Fairvest Limited B	FTB	517	512	0.98	-2.27	8.39
Grindrod Ltd	GND	1200	1229	-2.36	-8.05	0.33
Hosken Cons Inv Ltd	HCI	13000	12800	1.56	-5.49	-20.73
Hudaco Industries Ltd	HDC	19700	19450	1.29	-1.99	-8.80
Hyprop Inv Ltd	HYP	4327	4286	0.96	-0.12	-6.89
JSE Ltd	JSE	13210	13074	1.04	0.08	9.43
KAP Industrial Hldgs Ltd	KAP	191	194	-1.55	-25.10	-37.79
Karooooo Ltd	KRO	87651	87150	0.57	-9.17	0.75
PSG Konsult Limited	KST	2175	2191	-0.73	6.25	10.86
Libstar Holdings Ltd	LBR	320	315	1.59	0.00	-26.44
Lighthouse Properties plc	LTE	804	818	-1.71	-4.17	0.12
Industrials REIT Limited	MLI	39	38.5	1.30	-25.71	50.00
MAS P.L.C	MSP	2360	2380	-0.84	20.47	1.29
Metair Investments Ltd	MTA	730	749	-2.54	-11.52	-25.89
Motus Holdings Ltd	MTH	9962	9836	1.28	6.69	-18.01
Murray & Roberts Hldgs	MUR	110	110	0.00	0.00	0.00
Oceana Group Ltd	OCE	5358	5315	0.81	-8.61	-20.60
Omnia Holdings Ltd	OMN	7884	7878	0.08	10.73	0.95
Pan African Resource plc	PAN	1165	1127	3.37	0.69	42.25
PPC Limited	PPC	517	514	0.58	10.94	0.39
Raubex Group Ltd	RBX	4522	4485	0.82	-5.97	-14.68
RFG Holdings Limited	RFG	1685	1655	1.81	-5.87	-18.56
Reunert Ltd	RLO	5659	5617	0.75	-2.97	-24.55
SA Corp Real Estate Ltd	SAC	304	304	0.00	0.00	4.11
Super Group Ltd	SPG	1595	1587	0.50	-47.36	-45.93
Stor-Age Prop REIT Ltd	SSS	1553	1555	-0.13	-4.72	-0.32
Southern Sun LTD	SSU	885	905	-2.21	-2.85	-2.53
Sun International Ltd	SUI	4724	4760	-0.76	12.77	8.60
Tharisa plc	THA	2078	2080	-0.10	27.48	28.11
Tsogo Sun Gaming Ltd	TSG	765	775	-1.29	-3.16	-25.00
Vukile Property Fund Ltd	VKE	1935	1903	1.68	-3.25	7.68
Wilson Bayly Hlm-Ovc Ltd	WBO	17908	18059	-0.84	-3.08	-23.23

10-YEAR BOND YIELD | SELECTED ITEMS (Basis Point Change)

REGION	YIELD	1D	1M	1Y
United States	4.35%	0	-1	-1
United Kingdom	4.54%	0	-7	34
Germany	2.61%	0	9	1
Japan	1.44%	1	-5	37
South African 10Y	9.73%	-10	-26	-28

SOUTH AFRICAN 10-YEAR

2024 vs 2025 to date

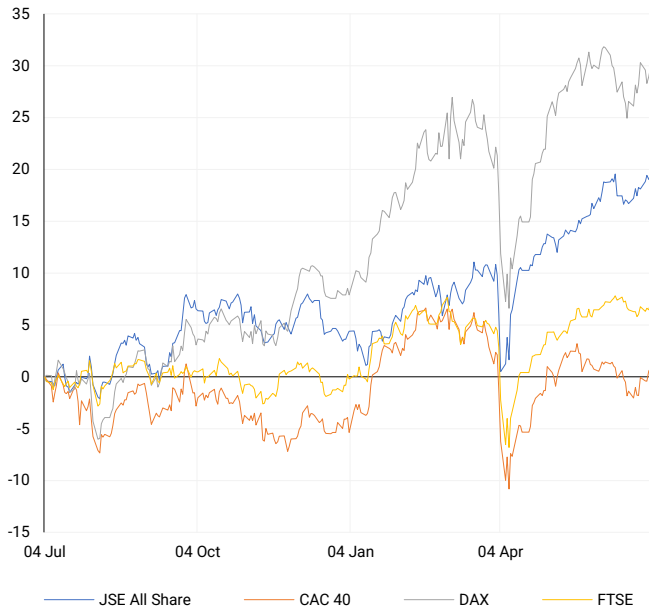


GLOBAL INTEREST RATES | SELECTED ITEMS

REGION	DATE CHANGED	CURRENT RATE
United States	Nov '24	4.50%-4.75%
United Kingdom	May '25	4.25%
European	Jun '25	2.15%
SA Repo Rate	May '25	7.25%
SA Prime Rate	May '25	10.75%

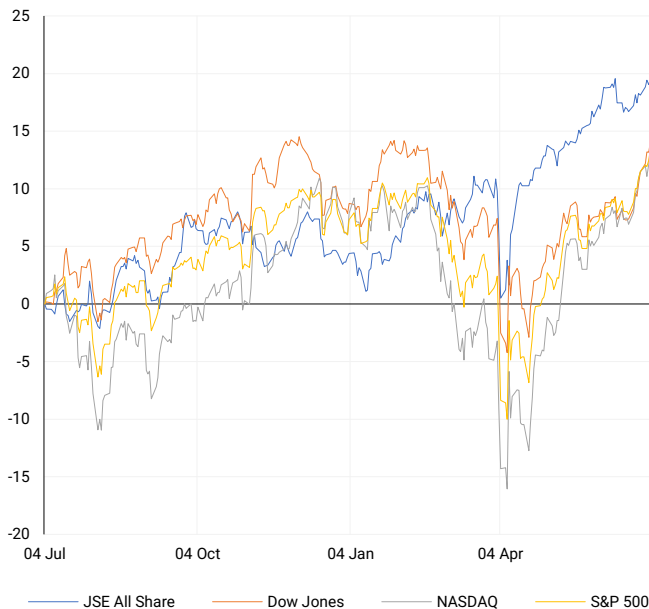
EUROPEAN INDICES

Normalised percentage performances



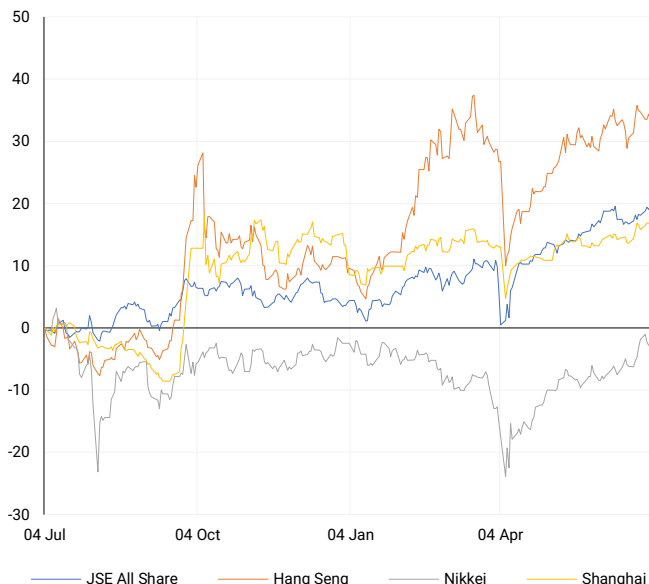
AMERICAN INDICES

Normalised percentage performances



ASIAN INDICES

Normalised percentage performances

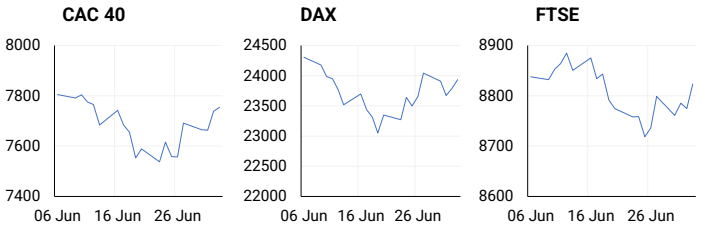


EUROPEAN MARKET SUMMARY

SELECTED ITEMS

European equities advanced on Thursday, supported by strength in banking shares and cautious optimism over US-EU trade dialogue. The STOXX 600 rose 0.5%, with Germany's DAX up 0.6% and France's CAC 40 gaining 0.2%. UK services PMI hit a 12-month high, while softer output prices align with a less hawkish policy outlook from the Bank of England. Separately, the EU raised its electricity import limit from Ukraine by 38.5%, aiding Kyiv's post-conflict recovery efforts through enhanced export capacity.

EUROPEAN INDICES	CLOSE	PREVIOUS	1D%	5D%	1M%	YTD%
CAC 40	7754.55	7738.42	0.21	2.61	-0.12	5.06
DAX 30	23934.13	23790.11	0.61	1.20	-0.69	20.22
Eurostoxx 50	5343.40	5320.20	0.44	1.78	0.11	9.14
FTSE	8823.20	8774.69	0.55	1.00	0.41	7.96



AMERICAN MARKET SUMMARY

SELECTED ITEMS

Wall Street extended its rally on Thursday, with the S&P 500 and Nasdaq closing at record highs, driven by tech sector gains and robust labour market data. Nvidia climbed 1.3%, lifting its valuation to US\$3.89 trillion—just behind Apple's all-time high. Nonfarm payrolls increased by 147,000, well above expectations, and unemployment declined to 4.1%, prompting a shift in rate-cut expectations. Post-close, the House approved a US\$3.4 trillion tax and spending bill, seen as stimulative in the near term but inflationary over the longer term.

AMERICAN INDICES	CLOSE	PREVIOUS	1D%	5D%	1M%	YTD%
Dow Jones	44828.53	44484.42	0.77	3.32	5.43	5.37
Nasdaq	20601.10	20393.13	1.02	2.15	6.20	6.68
S&P 500	6279.35	6227.42	0.83	2.25	5.18	6.76
US VIX	16.38	16.64	-1.56	-1.27	-7.41	-5.59



ASIAN MARKET SUMMARY

SELECTED ITEMS

Asia-Pacific markets were mixed on Friday as investors awaited further clarity on US tariff policy ahead of next week's deadline. Alibaba announced a HK\$12 billion capital raise through zero-coupon exchangeable bonds, linked to shares in Alibaba Health. In Japan, household spending rose 4.7% year-on-year in May, outperforming forecasts and marking the strongest growth since August 2022. Real household income also improved marginally, supporting a steady consumption outlook.

ASIAN INDICES	CLOSE	PREVIOUS	1D%	5D%	1M%	YTD%
Hang Seng	24069.94	24221.41	-0.63	-1.05	2.37	19.99
Nikkei 225	39785.90	39762.48	0.06	0.51	6.25	-0.27
Shanghai	3461.15	3454.79	0.18	0.37	2.95	3.26



COMMODITIES MARKET SUMMARY

SELECTED ITEMS

Oil prices were largely flat on Friday, underpinned by strong US employment data suggesting the Federal Reserve may pause rate cuts, while reports of an expected 411,000 bpd OPEC+ output increase for August limited upside. US sanctions targeting Iranian oil smuggling and Hezbollah-linked entities added geopolitical risk. Gold prices edged higher and remained on track for a weekly gain, supported by fiscal concerns following passage of President Trump's sizeable tax and spending legislation.

COMMODITY	LAST	CLOSE	% CHG	1D%	5D%	YTD%
Brent Crude	68.58	68.89	-0.45	-0.35	1.68	-7.94
Gold	3341.42	3326.50	0.45	-0.92	-0.04	26.75
Palladium	1144.23	1135.70	0.75	-2.52	-0.04	27.82
Platinum	1391.48	1376.20	1.11	-3.29	-3.18	54.02
Silver	36.84	36.85	-0.03	0.82	0.52	27.60

BRENT CRUDE

One-year



PLATINUM

One-year



GOLD

One-year



CURRENCY MARKET SUMMARY

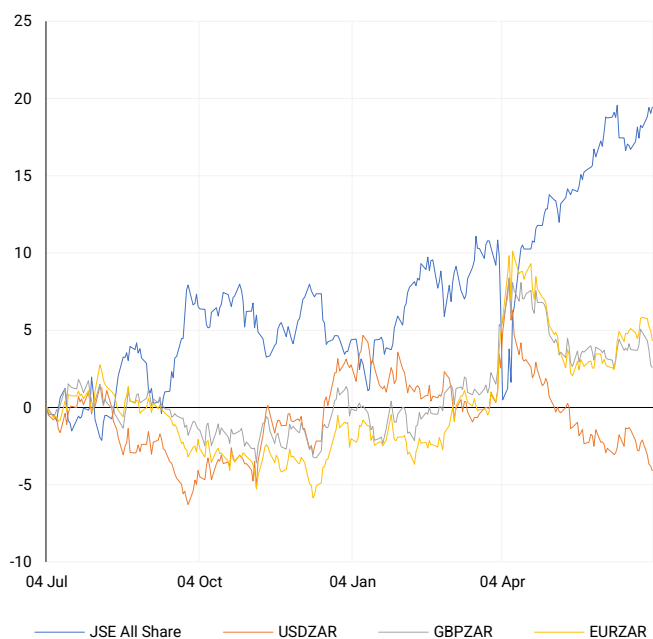
SELECTED ITEMS

The rand strengthened on Thursday, lifted by optimism over US-led trade momentum following a newly signed agreement with Vietnam, boosting prospects for broader deals before the 9 July deadline. The US dollar held firm on Friday, bolstered by stronger-than-expected jobs data, which pushed back rate-cut expectations. Passage of the US\$3.4 trillion fiscal package also reinforced dollar support, with markets now watching closely for trade resolution with nations still negotiating with Washington.

CURRENCY PAIR	LAST	CLOSE	% CHG	1D%	5D%	YTD%
USDZAR	17.49	17.52	-0.14	-0.29	-1.84	-7.02
GBPZAR	23.93	23.92	0.03	-0.13	-2.34	1.23
EURZAR	20.61	20.60	0.06	-0.63	-1.36	5.43
AUDZAR	11.50	11.51	-0.11	-0.47	-1.48	-1.42
EURUSD	1.18	1.18	0.21	-0.35	0.48	13.56
USDJPY	144.36	144.93	-0.39	0.88	0.36	-7.84
GBPUSD	1.37	1.37	0.17	0.15	-0.52	9.13
USDCHF	0.79	0.80	-0.30	0.39	-0.62	-12.36

CURRENCY PAIRS vs JSE ALL SHARE

Normalised percentage performances



USDZAR

One-year



EURUSD

One-year



SOURCES | JSE, IRESS, MONEYWEB, CNBC, BBC, CNN

Disclaimer: This note is prepared for Sanlam Private Wealth (Pty) Ltd, by K2013143132 (Pty) Ltd trading as ThompsonGreen. ThompsonGreen is an independent company contracted to Sanlam Private Wealth (Pty) Ltd. The views expressed in this note are those of ThompsonGreen and/or its analysts and not necessarily the views of Sanlam Private Wealth (Pty) Ltd, Sanlam or any officer or agent thereof. K2013143132 (Pty) Ltd trading as ThompsonGreen is a research house and not a registered broker, financial adviser or financial service provider. Our editors and customer services teams also do not give personal investment advice. The information in this document is general advice only and may not be appropriate to your particular investment objectives, financial situation or particular needs. Before investing, or if you are in any doubt about your personal situation, you should seek professional advice from a stockbroker or independent financial adviser authorised by the Financial Sector Conduct Authority.