

GLOBAL OVERVIEW | SELECTED INDICES

SOUTH AFRICAN INDICES						
	CLOSE	PREVIOUS	1D%	5D%	1M%	YTD%
All Share	97255.74	97363.36	-0.11	0.36	0.92	15.65
Top 40	89537.61	89623.71	-0.10	0.38	1.06	18.78
Financial 15	21305.73	21197.28	0.51	-0.53	-0.21	3.38
Industrial 25	137439.81	136911.20	0.39	0.27	1.00	15.80
Resource 10	77430.67	78963.86	-1.94	1.77	2.33	49.17
Mid Cap	98474.51	98963.04	-0.49	0.21	1.73	10.12
Small Cap	93420.60	93781.80	-0.39	0.28	1.58	0.04
Banks	12804.13	12726.52	0.61	-0.60	-1.11	1.11
Retailers	7042.78	7049.10	-0.09	-0.75	-4.85	-17.30
Property (J253) - TR	2570.13	2587.83	-0.68	0.87	1.05	6.93

AMERICAN INDICES						
	CLOSE	PREVIOUS	1D%	5D%	1M%	YTD%
Dow Jones	44240.76	44406.36	-0.37	-0.57	3.46	3.99
Nasdaq	20418.46	20412.52	0.03	1.07	4.55	5.74
S&P 500	6225.52	6229.98	-0.07	0.44	3.75	5.85
US VIX	16.81	17.79	-5.51	-0.12	0.24	-3.11

EUROPEAN INDICES						
	CLOSE	PREVIOUS	1D%	5D%	1M%	YTD%
CAC 40	7766.71	7723.47	0.56	1.36	-0.49	5.23
DAX 30	24206.91	24073.67	0.55	2.26	-0.40	21.59
Eurostoxx 50	5375.80	5340.00	0.67	1.69	-0.96	9.80
FTSE	8854.18	8806.53	0.54	0.78	0.18	8.33

ASIAN INDICES						
	CLOSE	PREVIOUS	1D%	5D%	1M%	YTD%
Hang Seng	24148.07	23887.83	1.09	0.31	1.49	20.38
Nikkei 225	39688.81	39587.68	0.26	-0.74	5.16	-0.52
Shanghai	3497.48	3473.13	0.70	1.15	3.31	4.35

EARLY MORNING MARKETS						
	LAST	CLOSE	% CHG	1D%	5D%	YTD%
TENCENT	501.00	502.00	-0.20	1.05	-0.20	20.62
BHP AUS	3803	3860	-1.48	-0.34	5.03	-0.41

NOTE: 5D% and 1M% are rolling percentage moves

INTERNATIONAL ECONOMIC CALENDAR | SELECTED EVENTS

TIME	AREA	TODAY'S EVENTS & RELEASES	PERIOD	EXP.	PREV.
20:00	US	FOMC Meeting Minutes	--	--	--
--	--	--	--	--	--
--	--	--	--	--	--
--	--	--	--	--	--
--	--	--	--	--	--

TIME	AREA	PREVIOUS SESSION'S RELEASES	PERIOD	EXP.	ACT.
21:00	US	Consumer Credit m/m	May	10.4b	5.1b
--	--	--	--	--	--
--	--	--	--	--	--
--	--	--	--	--	--
--	--	--	--	--	--

JSE ALL SHARE | BEST AND WORST ONE-DAY PERFORMERS

BEST ONE-DAY % PERFORMERS						
	CODE	CLOSE	1D%	5D%	YTD%	
Famous Brands Ltd	FBR	6398	4.03	-0.19	-7.28	
Sasol Limited	SOL	9162	3.87	15.09	10.03	
Glencore plc	GLN	7420	3.00	5.62	-11.16	
Hosken Cons Inv Ltd	HCI	14527	2.99	13.37	-11.42	
Altron Limited A	AEL	2272	2.90	2.95	6.92	
Sappi Ltd	SAP	2902	2.51	-1.69	-41.09	

WORST ONE-DAY % PERFORMERS						
	CODE	CLOSE	1D%	5D%	YTD%	
Montauk Renewables Inc	MKR	4085	-11.41	-6.31	-50.78	
Sibanye Stillwater Ltd	SSW	3374	-4.90	3.31	125.23	
RCL Foods Limited	RCL	1035	-4.87	-6.17	8.95	
Metair Investments Ltd	MTA	714	-4.55	-4.80	-27.51	
AngloGold Ashanti plc	ANG	80688	-3.57	-0.66	91.66	

DIVIDEND DATA

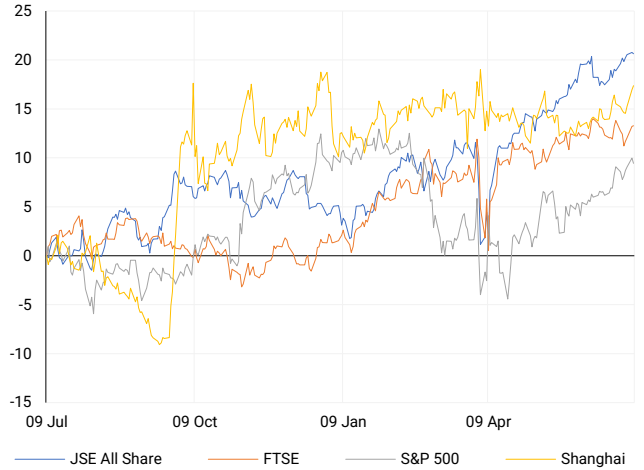
COMPANY	CODE	EXPECTED DIVIDEND	COMPANY	CODE	EXPECTED DIVIDEND
Capital Appreciation	CTA	7 ZARc	Telkom SA SOC	TKG	163 ZARc
African Media Entertainment	AME	330 ZARc	Zeda	ZZD	55 ZARc
Netcare	NTC	36 ZARc	Vunani	VUN	35 ZARc
Famous Brands	FBR	195 ZARc	Bytes Technology Group	BYI	6.9 GBPp
Premier Group	PMR	271 ZARc	---	---	---

SOURCES | JSE, IRESS, MONEYWEB, CNBC, BBC, CNN

PLEASE SEE THE BOTTOM OF THE LAST PAGE FOR THE FULL DISCLAIMER

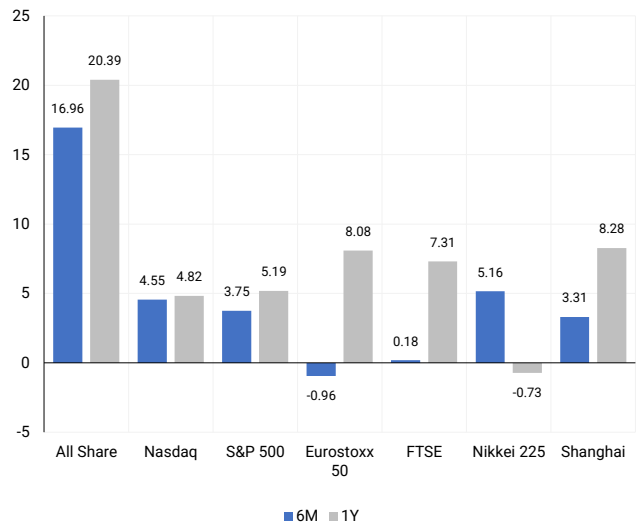
INTERNATIONAL INDICES

Normalised percentage performances - In rand terms



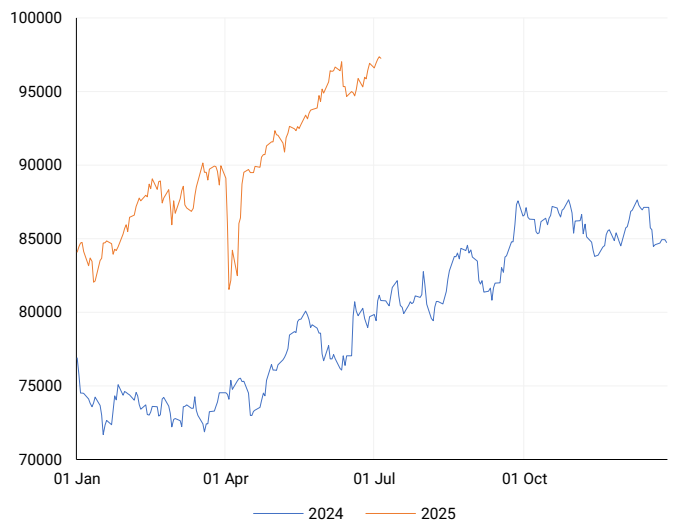
INTERNATIONAL INDICES

6-month & 1-year percentage performances



JSE ALL SHARE INDEX

2024 v 2025 to date



LOCAL EQUITIES | JSE LARGE CAP COMPANIES (Cents Per Share)

COMPANY	CLOSE	PREVIOUS	1D%	5D%	1M%	YTD%
Absa Group Limited	17750	17770	-0.11	-0.11	-0.45	-6.46
Anglo American plc	53835	52945	1.68	3.08	1.05	-2.45
Anglo American Plat Ltd	82500	85062	-3.01	3.16	8.70	45.00
Anglogold Ashanti Ltd	80688	83677	-3.57	-0.66	-0.79	91.66
Anheuser-Busch InBev SA NV	121228	122180	-0.78	-1.11	-3.72	29.24
BHP Group Limited	44534	44250	0.64	4.58	1.04	-3.27
BID Corporation Ltd	45361	45573	-0.47	-3.07	-2.37	5.35
British American Tob plc	84998	86058	-1.23	3.01	0.44	25.63
Compagnie Fin Richemont	337829	334525	0.99	1.57	3.00	21.70
Capitec Bank Hldgs Ltd	354593	355733	-0.32	-0.40	0.90	13.13
Discovery Ltd	22117	21843	1.25	1.78	1.25	13.55
Firststrand Ltd	7525	7421	1.40	-1.25	-1.30	-0.93
Gold Fields Ltd	42080	43232	-2.66	-0.21	-3.99	70.30
Glencore plc	7420	7204	3.00	5.62	7.10	-11.16
Impala Platinum Hlgs Ltd	17067	17349	-1.63	5.50	19.47	94.50
Kumba Iron Ore Ltd	29700	29798	-0.33	3.51	2.25	-8.97
Mondi plc	28612	28613	0.00	-1.76	-2.61	3.11
MTN Group Ltd	14244	14167	0.54	0.31	9.45	54.84
Naspers Ltd -N-	552662	545624	1.29	1.02	3.14	32.43
Prosus N.V.	99912	98697	1.23	2.46	4.66	33.38
South32 Limited	3551	3541	0.28	2.51	2.33	-10.96
Standard Bank Group Ltd	22691	22557	0.59	-0.37	-3.05	2.32
Shoprite Holdings Ltd	27753	27981	-0.81	-1.44	-2.75	-5.76
Sanlam Limited	8866	8847	0.21	-1.17	-2.12	2.05
Sasol Limited	9162	8821	3.87	15.09	10.65	10.03
Sibanye Stillwater Ltd	3374	3548	-4.90	3.31	12.92	125.23
Vodacom Group Ltd	14052	13833	1.58	0.49	3.11	38.63

SOUTH AFRICAN MARKET SUMMARY

SELECTED ITEMS

The JSE Top 40 index dipped 0.1% yesterday to close at 89,537.6 points, while the All Share index declined 0.11%, settling at 97,255.7 points. Investor sentiment in South Africa remained cautious amid persistent political uncertainty and muted economic signals. Focus centred on tensions within the new coalition government, following reports of disagreements over key cabinet appointments. Meanwhile, the business sector maintained a reserved stance on ongoing state-owned enterprise reforms, amid ongoing concerns over Transnet's operational efficiency and Eskom's financial health. Looking ahead, markets await inflation expectation data that could influence the South African Reserve Bank's interest rate decisions for the remainder of the year.

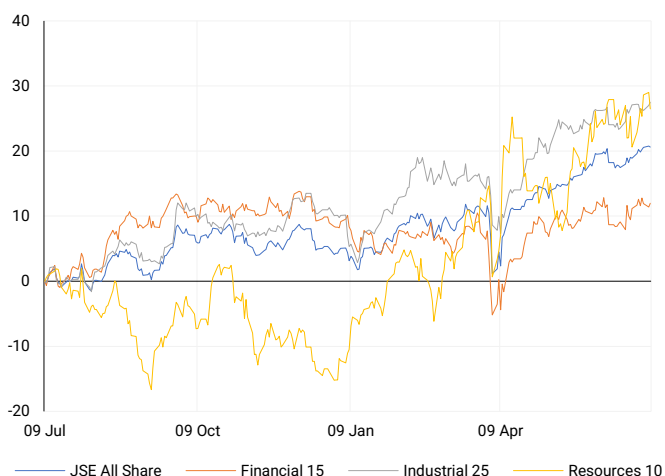
JSE ALL SHARE

One-year



LOCAL INDICES

Normalised percentage performances



LOCAL SENS ANNOUNCEMENTS

SELECTED RELEASE

Naspers – Buy-Back Continuity Reinforces Capital Discipline

Naspers confirmed the continuation of its share repurchase programme, signalling firm commitment to shareholder value creation and disciplined capital management. The move supports the group's long-standing aim to reduce the discount between its share price and underlying net asset value, particularly in light of its indirect exposure to Tencent via Prosus. In a market marked by volatile valuations across global tech, the consistency of Naspers' capital return strategy offers reassurance to long-term investors seeking clarity and structural alignment.

NPN | +1.29% | Open : 541700 | High : 554908 | Low : 541700 | Close : 552662

Vodacom Group – Regulatory Clearance Advances Strategic Fibre Deal

Vodacom's proposed acquisition of a 30% stake in fibre network operator Maziv progressed materially, with the Competition Commission formally withdrawing its opposition after agreeing to stricter terms. These include a five-year capital rollout plan, increased access for third-party service providers, and strengthened empowerment initiatives. With the matter now moving to the Competition Appeal Court, the transaction is poised to enhance Vodacom's infrastructure reach while supporting inclusive broadband expansion. If finalised, the deal is expected to deliver both commercial and social dividends, reinforcing Vodacom's long-term growth platform in South Africa's data economy.

VOD | +1.58% | Open : 13800 | High : 14127 | Low : 13783 | Close : 14052

Orion Minerals – Capital Raise to Fund Project Momentum

Orion Minerals announced plans for a capital raise through the release of an Appendix 3B, following a brief trading halt on the ASX. The funds are expected to support development activities or exploration progress, marking a step forward in the company's project pipeline. While near-term dilution is a consideration, investor sentiment appeared buoyant, likely reflecting confidence that additional funding will aid de-risking and unlock long-term resource value. The market responded positively, with the share gaining sharply on the day.

ORN | +7.69% | Open : 12 | High : 14 | Low : 12 | Close : 14

EXPECTED COMPANY REPORTING SCHEDULE

COMPANY	CODE	RELEASE	DATE
Karoo000	KRO	Quarterly	Fri, 18 Jul
Valterra Platinum	VAL	Interim	Tue, 22 Jul
Visual International	VIS	Final	Tue, 22 Jul
Karoo000	KRO	Quarterly	Fri, 18 Jul
Valterra Platinum	VAL	Interim	Tue, 22 Jul

BANK AND OTHER SELECTE PREFERENCE SHARES

COMPANY	CODE	CLOSE	CLEAN YIELD	NEXT LDT (Est.)
Investec Limited	INPR	9950	9.08	Tue, 10 Jun '25
Standard Bank	SBPP	10156	8.62	Wed, 03 Sept '25
Capitec	CPIP	10725	8.78	Wed, 17 Sept '25
Grindrod	GNDP	9801	10.25	Wed, 17 Sept '25
Netcare	NTCP	8879	10.51	Wed, 12 Nov '25
Discovery	DSBP	11685	9.71	Wed, 17 Sept '25

LOCAL EQUITIES | JSE MID CAP COMPANIES (Cents Per Share)

COMPANY	CODE	CLOSE	PREVIOUS	1D%	1M%	YTD%
Aspen Pharmacare Hldgs Ltd	APN	11567	11811	-2.07	-4.40	-29.83
African Rainbow Min Ltd	ARI	17639	17724	-0.48	1.67	17.29
AVI Ltd	AVI	9409	9686	-2.86	0.73	-14.25
Barloworld Ltd	BAW	11566	11575	-0.08	6.11	6.57
Bidvest Ltd	BVT	23604	23584	0.08	-3.55	-10.48
Boxer	BOX	7025	6966	0.85	9.29	9.08
Bytes Technology Grp PLC	BYI	8900	8838	0.70	-31.03	-9.47
Capital&Counties Prop plc	CCO	3744	3786	-1.11	6.97	19.73
Clicks Group Ltd	CLS	36777	36692	0.23	-3.15	-1.43
Dis-Chem Pharmacies Ltd	DCP	3268	3244	0.74	-0.21	-9.47
Exxaro Resources Ltd	EXX	15720	15636	0.54	4.52	-0.47
Fortress Real Est INV B	FFB	2053	2080	-1.30	1.38	1.33
Growthpoint Prop Ltd	GRT	1380	1400	-1.43	2.00	8.41
Harmony GM Co Ltd	HAR	25090	25535	-1.74	-3.69	66.51
Hammerson plc	HMN	7125	7152	-0.38	0.30	6.82
Investec Ltd	INL	13230	13053	1.36	5.11	5.81
Investec plc	INP	13200	13010	1.46	3.73	4.18
Italtile Ltd	ITE	1007	1003	0.40	1.72	-28.78
Life Healthc Grp Hldgs Ltd	LHC	1420	1431	-0.77	-0.77	-13.31
MultiChoice Group Ltd	MCG	11713	11750	-0.31	0.76	8.45
Montauk Renewables Inc	MKR	4085	4611	-11.41	15.92	-50.78
Mr Price Group Ltd	MRP	21715	21671	0.20	-10.63	-26.45
Momentum Met Hldgs Ltd	MTM	3404	3397	0.21	-3.65	12.49
Ninety One Plc	N91	4497	4574	-1.68	7.10	30.80
Nedbank Group Ltd	NED	24276	24059	0.90	-4.99	-13.83
Northam Platinum Hldgs Ltd	NPH	19433	19829	-2.00	15.08	99.50
NEPI Rockcastle N.V.	NRP	13619	13610	0.07	0.45	-1.30
Netcare Limited	NTC	1410	1424	-0.98	-3.03	-5.50
Ninety One Limited	NY1	4369	4437	-1.53	6.48	26.13
Old Mutual Limited	OMU	1228	1212	1.32	2.33	-1.84
OUTsurance Group Ltd	OUT	7925	7884	0.52	-1.63	19.17
Pick n Pay Stores Ltd	PIK	2699	2756	-2.07	4.37	-12.08
Pepkor Holdings Ltd	PPH	2802	2793	0.32	-3.38	-3.21
Quilter Plc	QLT	3786	3735	1.37	-0.73	6.47
Redefine Properties Ltd	RDF	467	470	-0.64	-1.27	2.64
Remgro Ltd	REM	16898	16785	0.67	6.95	8.95
Resilient REIT Limited	RES	6320	6342	-0.35	4.15	7.56
Reinet Investments S.C.A	RNI	53409	53587	-0.33	9.50	19.44
Sappi Ltd	SAP	2902	2831	2.51	-14.62	-41.09
Santam Limited	SNT	42671	42676	-0.01	1.47	8.68
The Spar Group Ltd	SPP	11087	11126	-0.35	-1.39	-24.11
Sirius Real Estate Ltd	SRE	2263	2283	-0.88	-3.25	22.99
Tiger Brands Ltd	TBS	30033	30425	-1.29	-8.99	3.91
Transaction Capital Ltd	TCP	133	135	-1.48	13.68	-45.49
The Foschini Group Limited	TFG	13210	13249	-0.29	-4.41	-21.37
Thungela Resources Ltd	TGA	8676	8594	0.95	-3.15	-35.10
Telkom SA SOC Ltd	TKG	5426	5415	0.20	35.65	55.16
Truworths Int Ltd	TRU	7244	7205	0.54	-1.16	-30.08
Woolworths Holdings Ltd	WHL	5076	5136	-1.17	-9.76	-18.59
Zeda Limited	ZZD	1270	1274	-0.31	5.83	-4.51

LOCAL EQUITIES | JSE SMALL CAP COMPANIES (Cents Per Share)

COMPANY	CODE	CLOSE	PREVIOUS	1D%	1M%	YTD%
ArcelorMittal SA Limited	ACL	101	100	1.00	-7.34	-24.63
ADvTECH Ltd	ADH	3272	3265	0.21	5.48	-3.31
Altron Limited A	AEL	2272	2208	2.90	-0.35	6.92
AECI Limited	AFE	10150	10150	0.00	-0.87	16.11
Alexander Forbes Grp Hldgs	AFH	850	850	0.00	-7.61	4.29
Afrimat Limited	AFT	4442	4438	0.09	-14.18	-37.39
African Rainbow Cap Inv	AIL	3	3	0.00	0.00	-99.68
Adcock Ingram Hldgs Ltd	AIP	5028	5119	-1.78	-0.75	-24.96
Astral Foods Ltd	ARL	17571	17571	0.00	-7.03	-6.04
Attacq Limited	ATT	1432	1446	-0.97	-1.78	3.24
Brait PLC	BAT	221	219	0.91	-0.90	6.76
Blue Label Telecoms Ltd	BLU	1382	1387	-0.36	7.13	136.64
Burstone Group	BTN	806	819	-1.59	-10.74	-14.26
Coronation Fund Mngrs Ld	CML	3994	3980	0.35	-1.50	1.99
Curro Holdings Limited	COH	908	907	0.11	-0.87	-30.42
Cashbuild Ltd	CSB	14645	15000	-2.37	-5.17	-30.79
DRD Gold Ltd	DRD	2399	2463	-2.60	-5.92	45.13
Datalec Ltd	DTC	6367	6376	-0.14	-0.47	27.67
Emira Property Fund Ltd	EMI	1107	1100	0.64	-1.42	1.56
Equites Prop Fund Ltd	EQU	1541	1574	-2.10	-1.66	4.83
Famous Brands Ltd	FBR	6398	6150	4.03	0.13	-7.28
Fairvest Limited B	FTB	520	523	-0.57	-3.70	9.01
Grindrod Ltd	GND	1166	1191	-2.10	-12.40	-2.51
Hosken Cons Inv Ltd	HCI	14527	14105	2.99	6.11	-11.42
Hudaco Industries Ltd	HDC	19169	19342	-0.89	-4.16	-11.25
Hyprop Inv Ltd	HYP	4418	4429	-0.25	2.98	-4.93
JSE Ltd	JSE	13076	13100	-0.18	-0.89	8.32
KAP Industrial Hldgs Ltd	KAP	191	191	0.00	-25.10	-37.79
Karooooo Ltd	KRO	88602	89500	-1.00	-14.39	1.84
PSG Konsult Limited	KST	2173	2180	-0.32	5.90	10.75
Libstar Holdings Ltd	LBR	328	320	2.50	-0.61	-24.60
Lighthouse Properties plc	LTE	815	820	-0.61	-2.98	1.49
Industrials REIT Limited	MLI	37	36.5	1.37	-32.11	42.31
MAS P.L.C	MSP	2310	2312	-0.09	13.07	-0.86
Metair Investments Ltd	MTA	714	748	-4.55	-8.70	-27.51
Motus Holdings Ltd	MTH	9768	9752	0.16	-2.95	-19.61
Murray & Roberts Hldgs	MUR	110	110	0.00	0.00	0.00
Oceana Group Ltd	OCE	5300	5255	0.86	-11.67	-21.46
Omnia Holdings Ltd	OMN	8001	8142	-1.73	11.73	2.45
Pan African Resource plc	PAN	1198	1186	1.01	5.83	46.28
PPC Limited	PPC	515	513	0.39	3.41	0.00
Raubex Group Ltd	RBX	4536	4525	0.24	-4.71	-14.42
RFG Holdings Limited	RFG	1665	1650	0.91	-5.93	-19.53
Reunert Ltd	RLO	5589	5592	-0.05	-4.08	-25.48
SA Corp Real Estate Ltd	SAC	311	315	-1.27	-0.96	6.51
Super Group Ltd	SPG	1604	1571	2.10	-46.80	-45.63
Stor-Age Prop REIT Ltd	SSS	1559	1566	-0.45	-4.24	0.06
Southern Sun LTD	SSU	905	900	0.56	0.44	-0.33
Sun International Ltd	SUI	4700	4700	0.00	12.06	8.05
Tharisa plc	THA	2066	2100	-1.62	14.84	27.37
Tsogo Sun Gaming Ltd	TSG	750	749	0.13	-3.97	-26.47
Vukile Property Fund Ltd	VKE	1965	1983	-0.91	-0.91	9.35
Wilson Bayly Hlm-Ovc Ltd	WBO	17844	17932	-0.49	-5.39	-23.50

10-YEAR BOND YIELD | SELECTED ITEMS (Basis Point Change)

REGION	YIELD	1D	1M	1Y
United States	4.41%	1	-6	12
United Kingdom	4.63%	0	0	47
Germany	2.68%	0	12	11
Japan	1.49%	1	4	41
South African 10Y	9.88%	7	-26	-15

GLOBAL INTEREST RATES | SELECTED ITEMS

REGION	DATE CHANGED	CURRENT RATE
United States	Nov '24	4.50%-4.75%
United Kingdom	May '25	4.25%
European	Jun '25	2.15%
SA Repo Rate	May '25	7.25%
SA Prime Rate	May '25	10.75%

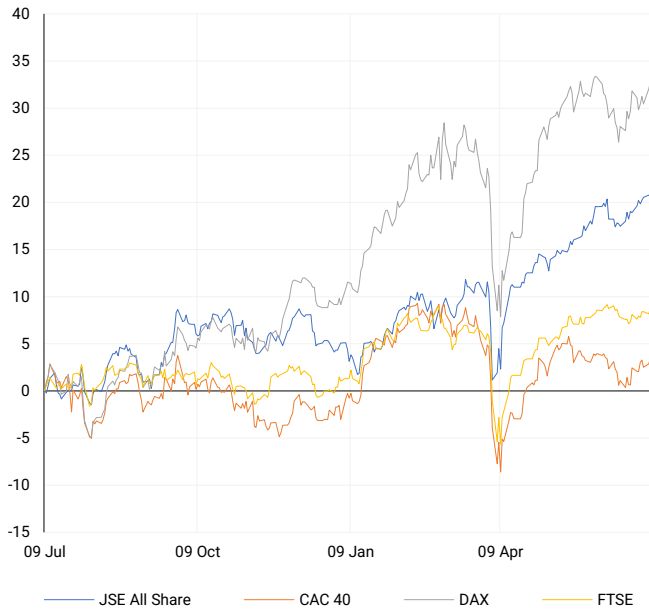
SOUTH AFRICAN 10-YEAR

2024 vs 2025 to date



EUROPEAN INDICES

Normalised percentage performances

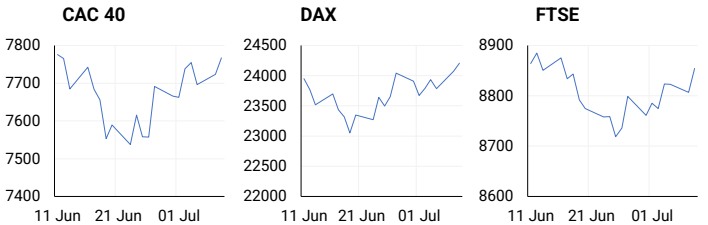


EUROPEAN MARKET SUMMARY

SELECTED ITEMS

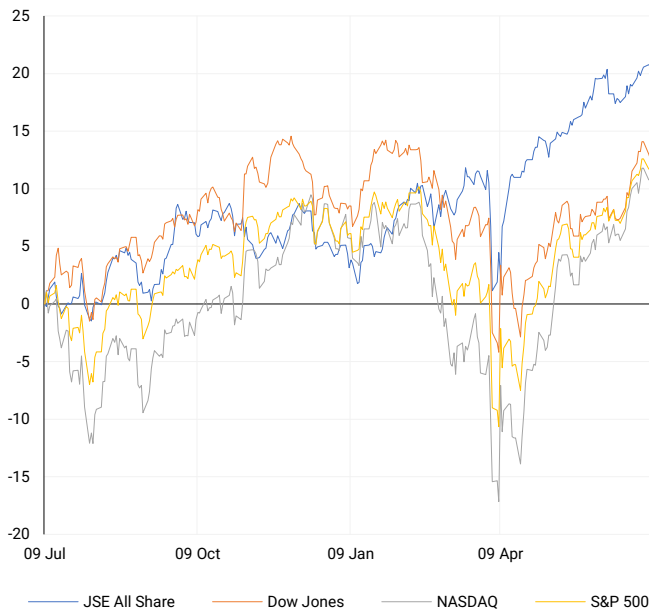
European equities were relatively flat, lacking clear direction amid downward revisions to corporate earnings forecasts for the second quarter. Analysts attributed the weaker outlook to escalating trade tensions with the US and slowing consumer demand. Political uncertainty compounded market caution, particularly in France and Germany, where coalition negotiations and fiscal debates continue to weigh on risk appetite. However, sectors such as luxury goods and pharmaceuticals showed resilience, supported by stronger demand in non-core EU markets.

EUROPEAN INDICES	CLOSE	PREVIOUS	1D%	5D%	1M%	YTD%
CAC 40	7766.71	7723.47	0.56	1.36	-0.49	5.23
DAX 30	24206.91	24073.67	0.55	2.26	-0.40	21.59
Eurostoxx 50	5375.80	5340.00	0.67	1.69	-0.96	9.80
FTSE	8854.18	8806.53	0.54	0.78	0.18	8.33



AMERICAN INDICES

Normalised percentage performances



AMERICAN MARKET SUMMARY

SELECTED ITEMS

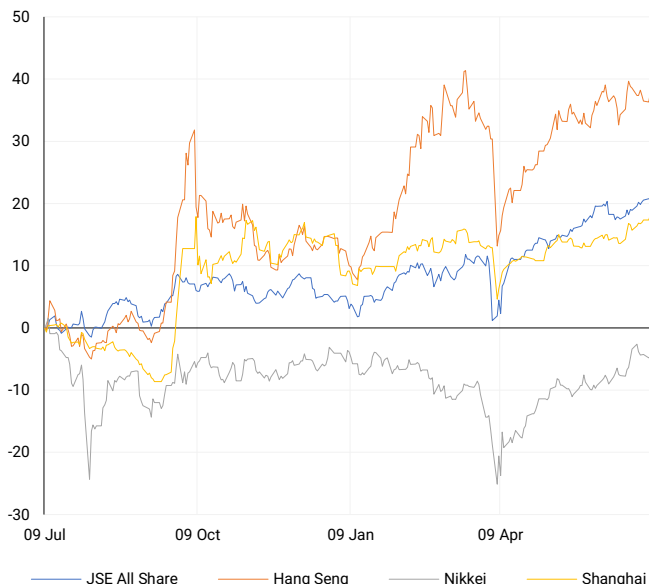
US markets displayed mixed performance as investors digested a slew of earnings guidance revisions and macroeconomic releases. ExxonMobil's lowered quarterly earnings outlook drew attention, though gains in other energy shares provided some balance. Technology and growth sectors edged higher ahead of key inflation data due later this week, with market participants closely monitoring for any signals that might alter the Federal Reserve's monetary policy stance. Political developments also resurfaced as a focus, following recent polling updates and campaign activity amid the intensifying presidential race.

AMERICAN INDICES	CLOSE	PREVIOUS	1D%	5D%	1M%	YTD%
Dow Jones	44240.76	44406.36	-0.37	-0.57	3.46	3.99
Nasdaq	20418.46	20412.52	0.03	1.07	4.55	5.74
S&P 500	6225.52	6229.98	-0.07	0.44	3.75	5.85
US VIX	16.81	17.79	-5.51	-0.12	0.24	-3.11



ASIAN INDICES

Normalised percentage performances



ASIAN MARKET SUMMARY

SELECTED ITEMS

Asian markets were mostly subdued, weighed down by concerns over China's economic outlook. A sharp fall in consumer lending figures added to worries about weakening domestic demand and intensified calls for policy support. Japanese equities struggled to gain traction despite stronger-than-expected machinery orders, as investors reassessed the Bank of Japan's potential tightening path. Overall, regional performance was muted, with trade dynamics and currency pressures continuing to influence investor sentiment across key emerging markets in Asia.

ASIAN INDICES	CLOSE	PREVIOUS	1D%	5D%	1M%	YTD%
Hang Seng	24148.07	23887.83	1.09	0.31	1.49	20.38
Nikkei 225	39688.81	39587.68	0.26	-0.74	5.16	-0.52
Shanghai	3497.48	3473.13	0.70	1.15	3.31	4.35



COMMODITIES MARKET SUMMARY

SELECTED ITEMS

Commodity markets saw a mixed session, with energy prices edging higher on indications of tighter supply, while industrial metals retreated amid ongoing demand concerns. Oil prices received modest support following reports of extended voluntary production cuts by certain OPEC+ members. However, gains were limited by softer economic data out of China, which weighed on sentiment for bulk commodities and base metals. Precious metals attracted mild safe-haven buying amid geopolitical tensions and uncertainty surrounding central bank policies.

COMMODITY	LAST	CLOSE	% CHG	1D%	5D%	YTD%
Brent Crude	70.03	70.03	0.00	0.68	4.18	-6.41
Gold	3296.35	3301.66	-0.16	-1.05	-1.11	25.80
Palladium	1106.00	1108.54	-0.23	-1.07	0.33	24.77
Platinum	1349.70	1368.60	-1.38	0.07	0.90	53.17
Silver	36.60	36.76	-0.44	-0.03	2.03	27.29

PLATINUM

One-year



GOLD

One-year



CURRENCY MARKET SUMMARY

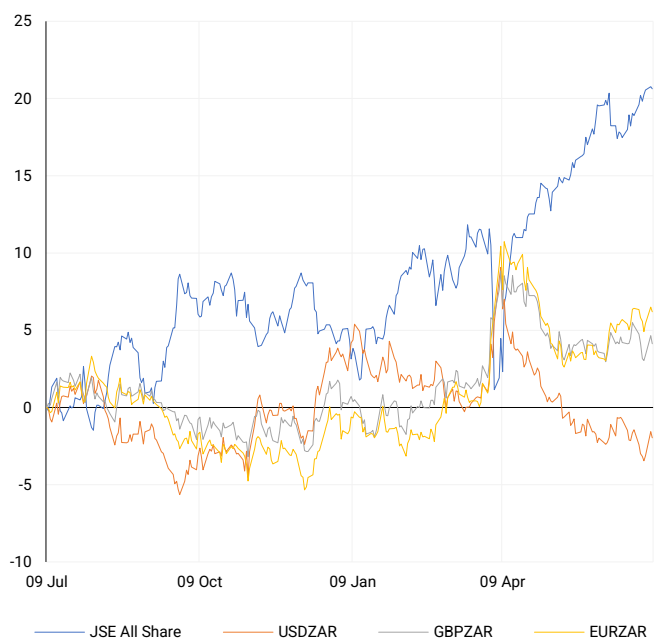
SELECTED ITEMS

Currency markets remained relatively stable, with the US dollar broadly firm as traders positioned ahead of forthcoming inflation data that could shape expectations for future interest rate moves. The euro came under pressure following weaker regional corporate earnings forecasts and diverging monetary policy signals. The pound held steady, balancing domestic political developments against the Bank of England's continued hawkish tone. Emerging market currencies were mixed, with the South African rand underperforming slightly amid persistent local political and economic risks.

CURRENCY PAIR	LAST	CLOSE	% CHG	1D%	5D%	YTD%
USDZAR	17.78	17.79	-0.01	-0.42	1.06	-5.60
GBPZAR	24.15	24.18	-0.09	-0.49	-0.04	2.31
EURZAR	20.82	20.85	-0.13	-0.28	0.37	6.73
AUDZAR	11.62	11.62	0.03	0.18	0.27	-0.53
EURUSD	1.17	1.17	-0.13	0.14	-0.68	13.25
USDJPY	147.10	146.57	0.36	0.34	2.20	-6.79
GBPUSD	1.36	1.36	-0.08	-0.06	-1.12	8.62
USDCHF	0.80	0.80	0.22	-0.34	0.57	-12.33

CURRENCY PAIRS vs JSE ALL SHARE

Normalised percentage performances



USDZAR

One-year



EURUSD

One-year



SOURCES | JSE, IRESS, MONEYWEB, CNBC, BBC, CNN

Disclaimer: This note is prepared for Sanlam Private Wealth (Pty) Ltd, by K2013143132 (Pty) Ltd trading as ThompsonGreen. ThompsonGreen is an independent company contracted to Sanlam Private Wealth (Pty) Ltd. The views expressed in this note are those of ThompsonGreen and/or its analysts and not necessarily the views of Sanlam Private Wealth (Pty) Ltd, Sanlam or any officer or agent thereof. K2013143132 (Pty) Ltd trading as ThompsonGreen is a research house and not a registered broker, financial adviser or financial service provider. Our editors and customer services teams also do not give personal investment advice. The information in this document is general advice only and may not be appropriate to your particular investment objectives, financial situation or particular needs. Before investing, or if you are in any doubt about your personal situation, you should seek professional advice from a stockbroker or independent financial adviser authorised by the Financial Sector Conduct Authority.