

GLOBAL OVERVIEW | SELECTED INDICES

SOUTH AFRICAN INDICES						
	CLOSE	PREVIOUS	1D%	5D%	1M%	YTD%
All Share	100855.21	100643.36	0.21	3.18	3.70	19.93
Top 40	93492.91	93305.77	0.20	3.72	4.42	24.03
Financial 15	21163.76	21110.10	0.25	-0.40	-0.67	2.69
Industrial 25	138926.35	139059.82	-0.10	2.14	1.08	17.06
Resource 10	90181.03	89627.48	0.62	11.26	16.47	73.73
Mid Cap	99248.29	98721.28	0.53	0.41	0.79	10.98
Small Cap	94127.39	94235.16	-0.11	0.08	0.76	0.80
Banks	12770.51	12753.84	0.13	-0.89	-0.26	0.84
Retailers	6574.04	6601.47	-0.42	-2.48	-6.66	-22.80
Property (J253) - TR	2649.33	2627.42	0.83	1.44	3.08	10.23

AMERICAN INDICES						
	CLOSE	PREVIOUS	1D%	5D%	1M%	YTD%
Dow Jones	44175.61	43968.64	0.47	1.35	-0.15	3.83
Nasdaq	21450.02	21242.70	0.98	3.87	5.05	11.08
S&P 500	6389.45	6340.00	0.78	2.43	2.63	8.63
US VIX	15.15	16.57	-8.57	-25.66	-9.88	-12.68

EUROPEAN INDICES						
	CLOSE	PREVIOUS	1D%	5D%	1M%	YTD%
CAC 40	7743.00	7709.32	0.44	2.61	-0.31	4.91
DAX 30	24162.86	24192.50	-0.12	3.15	-0.18	21.37
Eurostoxx 50	5342.45	5338.20	0.08	3.26	-0.62	9.12
FTSE	9095.73	9100.77	-0.06	0.30	2.73	11.29

ASIAN INDICES						
	CLOSE	PREVIOUS	1D%	5D%	1M%	YTD%
Hang Seng	24858.82	25081.63	-0.89	1.43	2.94	23.92
Nikkei 225	41820.48	41059.15	1.85	2.50	5.37	4.83
Shanghai	3635.13	3639.67	-0.12	2.11	3.94	8.45

EARLY MORNING MARKETS						
	LAST	CLOSE	% CHG	1D%	5D%	YTD%
TENCENT	558.50	561.00	-0.45	-1.06	4.86	34.80
BHP AUS	4090	4021	1.72	0.85	2.52	3.74

NOTE: 5D% and 1M% are rolling percentage moves

INTERNATIONAL ECONOMIC CALENDAR | SELECTED EVENTS

TIME	AREA	TODAY'S EVENTS & RELEASES	PERIOD	EXP.	PREV.
13:00	SA	Manufacturing Production MoM	--	-2.00%	2.00%
13:00	SA	Manufacturing Production YoY	--	5.20%	0.50%
--	--	--	--	--	--
--	--	--	--	--	--
--	--	--	--	--	--

TIME	AREA	PREVIOUS SESSION'S RELEASES	PERIOD	EXP.	ACT.
--	--	--	--	--	--
--	--	--	--	--	--
--	--	--	--	--	--
--	--	--	--	--	--
--	--	--	--	--	--

JSE ALL SHARE | BEST AND WORST ONE-DAY PERFORMERS

BEST ONE-DAY % PERFORMERS						
	CODE	CLOSE	1D%	5D%	YTD%	
African Rainbow Cap Inv	AIL	3	7.14	0.00	-99.68	
Sappi Ltd	SAP	2838	6.29	2.94	-42.39	
Karoo000 Ltd	KRO	85000	4.94	1.43	-2.30	
Sibanye Stillwater Ltd	SSW	4003	3.76	6.46	167.22	
PPC Limited	PPC	508	2.63	2.42	-1.36	
Metair Investments Ltd	MTA	650	2.36	9.43	-34.01	

WORST ONE-DAY % PERFORMERS						
	CODE	CLOSE	1D%	5D%	YTD%	
Southern Sun LTD	SSU	880	-5.38	-2.98	-3.08	
DRD Gold Ltd	DRD	2701	-4.99	7.06	63.40	
Sasol Limited	SOL	8659	-3.41	-3.67	3.99	
Thungela Resources Ltd	TGA	9328	-3.34	1.98	-30.23	
KAP Limited	KAP	166	-2.92	-11.23	-45.93	

DIVIDEND DATA

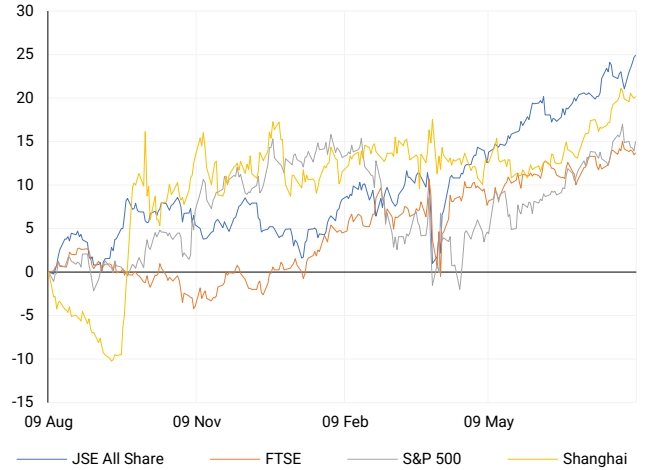
COMPANY	CODE	EXPECTED DIVIDEND	COMPANY	CODE	EXPECTED DIVIDEND
Crookes Brothers	CKS	150 ZARc	--	--	--
enX Group	ENX	130 ZARc	--	--	--
Hudaco Industries	HDC	350 ZARc	--	--	--
--	--	--	--	--	--
--	--	--	--	--	--

SOURCES | JSE, IRESS, MONEYWEB, CNBC, BBC, CNN

PLEASE SEE THE BOTTOM OF THE LAST PAGE FOR THE FULL DISCLAIMER

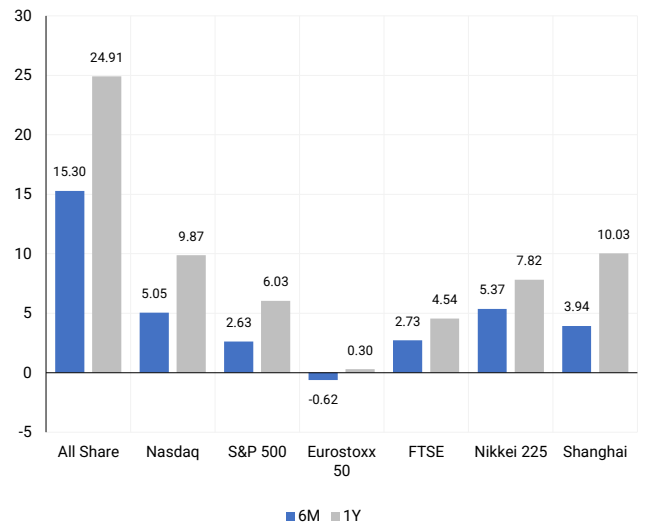
INTERNATIONAL INDICES

Normalised percentage performances - In rand terms



INTERNATIONAL INDICES

6-month & 1-year percentage performances



JSE ALL SHARE INDEX

2024 v 2025 to date



Ex Div Mon, 11 August

LOCAL EQUITIES | JSE LARGE CAP COMPANIES (Cents Per Share)

COMPANY	CLOSE	PREVIOUS	1D%	5D%	1M%	YTD%
Absa Group Limited	17756	17757	-0.01	-0.64	0.03	-6.42
Anglo American plc	51525	50720	1.59	4.14	-4.29	-6.63
Anglogold Ashanti Ltd	102349	102983	-0.62	16.58	26.85	143.11
Anheuser-Busch InBev SA NV	109794	108795	0.92	4.92	-9.43	17.05
BHP Group Limited	46680	45937	1.62	2.60	4.82	1.39
BID Corporation Ltd	45662	45157	1.12	0.69	0.66	6.05
British American Tob plc	100902	100033	0.87	2.86	18.71	49.14
Compagnie Fin Richemont	289432	290267	-0.29	2.16	-14.33	4.27
Capitec Bank Hldgs Ltd	351025	345698	1.54	0.84	-1.01	11.99
Discovery Ltd	21316	21300	0.08	1.32	-3.62	9.44
Firststrand Ltd	7568	7645	-1.01	-0.17	0.57	-0.37
Gold Fields Ltd	55797	55406	0.71	21.39	32.60	125.81
Glencore plc	6846	6702	2.15	-3.96	-7.74	-18.03
Impala Platinum Hlgs Ltd	17573	17377	1.13	0.23	2.96	100.26
Kumba Iron Ore Ltd	30055	29765	0.97	4.24	1.20	-7.88
Mondi plc	25452	25279	0.68	2.17	-11.04	-8.28
MTN Group Ltd	16500	16762	-1.56	6.00	15.84	79.37
Naspers Ltd -N-	559822	561329	-0.27	3.12	1.30	34.15
Prosus N.V.	104250	104644	-0.38	3.67	4.34	39.18
South32 Limited	3493	3430	1.84	3.80	-1.63	-12.41
Standard Bank Group Ltd	23082	22900	0.79	-1.18	1.72	4.09
Shoprite Holdings Ltd	26684	26298	1.47	0.89	-3.85	-9.39
Sanlam Limited	8583	8561	0.26	-0.65	-3.19	-1.21
Sasol Limited	8659	8965	-3.41	-3.67	-5.49	3.99
Sibanye Stillwater Ltd	4003	3858	3.76	6.46	18.64	167.22
Valterra	86946	85982	1.12	6.16	5.39	52.82
Vodacom Group Ltd	13746	13907	-1.16	0.47	-2.18	35.62

SOUTH AFRICAN MARKET SUMMARY
SELECTED ITEMS

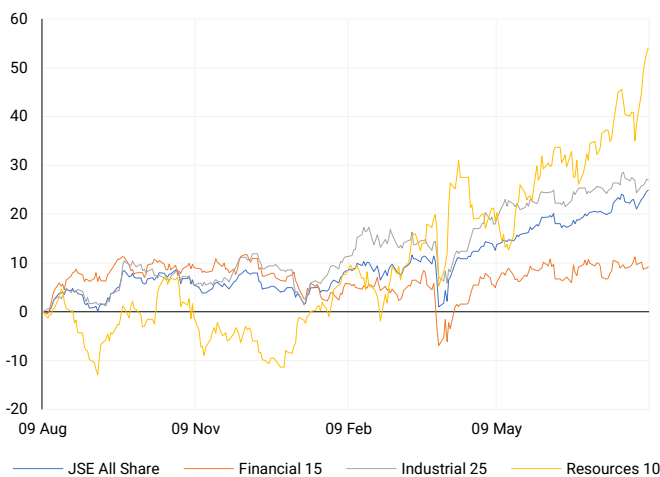
The Top 40 index rose 0.2% on Friday to close at 93,492.9 points, while the All Share index gained 0.21%, ending at 100,855.2. The Reserve Bank expects only marginal GDP impact from new 30% U.S. tariffs, with inflation largely unaffected. Despite the U.S. comprising just 7% of exports, missed trade deadlines triggered Sub-Saharan Africa's highest tariff rate. Eskom spent R5.84bn on diesel in four months. This week's key data includes manufacturing, mining, unemployment, and retail sales.

JSE ALL SHARE

One-year


LOCAL INDICES

Normalised percentage performances


LOCAL SENS ANNOUNCEMENTS
SELECTED RELEASE
MAS Real Estate

Prime Kapital, as General Partner of the DJV, has launched an unregulated voluntary offer to acquire MAS shares at €1.40 per share or via PKI preference shares. The bid complies with DJV governance rules and the Investment Mandate, requiring no MAS or MAS CEE consent. Funding is sourced from new debt secured against DJV-developed assets, without breaching LTV limits. MAS confirms the bid does not trigger restricted matters, nor does it obligate DJV to redeem MAS's preferred equity. The offer closes 14 August 2025. MAS shares are listed on the JSE but not subject to Maltese or South African takeover regulations.

MSP | +0.63% | Open : 2375 | High : 2475 | Low : 2375 | Close : 2400
Accelerate Property Fund Limited

Accelerate Property Fund reported a challenging financial year amid South Africa's infrastructure constraints, rising public debt, and strained US trade relations. Despite macro headwinds, a Government of National Unity has boosted investor sentiment, with GDP growth forecast at 1.5% for 2025. The Fund focused on deleveraging, disposing of eight assets for R694m, and achieving a 98.9% rent collection rate. A related party debt impairment of R970.7m materially impacted results, while rental income declined due to asset sales and reversions at Fourways Mall. Finance costs fell 34.1%, supported by R2.7bn in swaps. Portfolio vacancies improved to 19.4%, with ongoing capital reinvestment underway.

APF | -4.44% | Open : 43 | High : 43 | Low : 43 | Close : 43
Thungela Resources Limited

Thungela Resources expects a sharp year-on-year decline in earnings for H1 2025, with EPS and HEPS projected between R1.40 and R2.10—down over 78% from R9.52 in H1 2024. Attributable profit is estimated between R180m and R280m, significantly impacted by weaker market conditions and R285m in restructuring costs as the Goedehoop and Isibonelo mines near closure. The result reflects sector-wide margin pressures and transitional asset closures. Final EPS and HEPS outcomes remain subject to judgement adjustments. Full interim results will be released on 18 August 2025. Investors should monitor forward guidance closely amid continued volatility in the coal export environment.

TGA | -3.34% | Open : 9686 | High : 9749 | Low : 8500 | Close : 9328
EXPECTED COMPANY REPORTING SCHEDULE

COMPANY	CODE	RELEASE	DATE
Weaver Fintech	WVR	Interim	Tue, 12 Aug
Merafe	MRF	Interim	Tue, 12 Aug
Lighthouse Properties	LTE	Interim	Thu, 14 Aug
Weaver Fintech	WVR	Interim	Tue, 12 Aug
Merafe	MRF	Interim	Tue, 12 Aug

BANK AND OTHER SELECTED PREFERENCE SHARES

COMPANY	CODE	CLOSE	CLEAN YIELD	NEXT LDT (Est.)
Investec Limited	INPR	10200	8.92	Tue, 10 Jun '25
Standard Bank	SBPP	9939	8.88	Wed, 03 Sept '25
Capitec	CPIP	10763	8.82	Wed, 17 Sept '25
Grindrod	GNDP	10549	9.59	Wed, 17 Sept '25
Netcare	NTCP	9175	10.26	Wed, 12 Nov '25
Discovery	DSBP	12899	8.84	Wed, 17 Sept '25

LOCAL EQUITIES | JSE MID CAP COMPANIES (Cents Per Share)

COMPANY	CODE	CLOSE	PREVIOUS	1D%	1M%	YTD%
Aspen Pharmacare Hldgs Ltd	APN	11218	11254	-0.32	-3.02	-31.95
African Rainbow Min Ltd	ARI	18733	18378	1.93	6.20	24.56
AVI Ltd	AVI	9387	9380	0.07	-0.23	-14.45
Barloworld Ltd	BAW	11730	11725	0.04	1.42	8.08
Bidvest Ltd	BVT	23075	22895	0.79	-2.24	-12.49
Boxer	BOX	6736	6823	-1.28	-4.11	4.60
Bytes Technology Grp PLC	BYI	8805	8801	0.05	-1.07	-10.44
Capital&Counties Prop plc	CCO	3768	3780	-0.32	0.64	20.50
Clicks Group Ltd	CLS	37141	36767	1.02	0.99	-0.45
Dis-Chem Pharmacies Ltd	DCP	3052	3050	0.07	-6.61	-15.46
Exxaro Resources Ltd	EXX	16311	16061	1.56	3.76	3.27
Fortress Real Est INV B	FFB	2098	2091	0.33	2.19	3.55
Growthpoint Prop Ltd	GRT	1439	1421	1.27	4.28	13.04
Harmony GM Co Ltd	HAR	28400	28252	0.52	13.19	88.48
Hammerson plc	HMN	7150	7150	0.00	0.35	7.20
Investec Ltd	INL	12917	12915	0.02	-2.37	3.30
Investec plc	INP	12943	12971	-0.22	-1.95	2.15
Italtile Ltd	ITE	960	970	-1.03	-4.67	-32.11
Life Healthc Grp Hldgs Ltd	LHC	1353	1361	-0.59	-4.72	-17.40
MultiChoice Group Ltd	MCG	12101	12090	0.09	3.31	12.05
Montauk Renewables Inc	MKR	3288	3350	-1.85	-19.51	-60.39
Mr Price Group Ltd	MRP	20788	20738	0.24	-4.27	-29.59
Momentum Met Hldgs Ltd	MTM	3482	3499	-0.49	2.29	15.07
Ninety One Plc	N91	4576	4555	0.46	1.76	33.10
Nedbank Group Ltd	NED	22943	23211	-1.15	-5.49	-18.56
Northam Platinum Hldgs Ltd	NPH	22258	22300	-0.19	14.54	128.50
NEPI Rockcastle N.V.	NRP	13980	13809	1.24	2.65	1.31
Netcare Limited	NTC	1392	1382	0.72	-1.28	-6.70
Ninety One Limited	NY1	4436	4439	-0.07	1.53	28.06
Old Mutual Limited	OMU	1230	1220	0.82	0.16	-1.68
OUTsurance Group Ltd	OUT	7580	7552	0.37	-4.35	13.98
Pick n Pay Stores Ltd	PIK	2607	2680	-2.72	-3.41	-15.08
Pepkor Holdings Ltd	PPH	2633	2628	0.19	-6.03	-9.05
Quilter Plc	QLT	3866	3825	1.07	2.11	8.72
Redefine Properties Ltd	RDF	484	478	1.26	3.64	6.37
Remgro Ltd	REM	16573	16509	0.39	-1.92	6.85
Resilient REIT Limited	RES	6425	6400	0.39	1.66	9.34
Reinet Investments S.C.A	RNI	52203	52263	-0.11	-2.26	16.74
Sappi Ltd	SAP	2838	2670	6.29	-2.21	-42.39
Santam Limited	SNT	43300	43300	0.00	1.47	10.28
The Spar Group Ltd	SPP	10635	10534	0.96	-4.08	-27.20
Sirius Real Estate Ltd	SRE	2515	2511	0.16	11.14	36.68
Tiger Brands Ltd	TBS	30450	30557	-0.35	1.39	5.36
Transaction Capital Ltd	TCP	138	136	1.47	3.76	-43.44
The Foschini Group Limited	TFG	11100	11255	-1.38	-15.97	-33.93
Thungela Resources Ltd	TGA	9328	9650	-3.34	7.51	-30.23
Telkom SA SOC Ltd	TKG	5195	5312	-2.20	-4.26	48.56
Truworths Int Ltd	TRU	6773	6781	-0.12	-6.50	-34.63
Woolworths Holdings Ltd	WHL	5026	5147	-2.35	-0.99	-19.39
Zeda Limited	ZZD	1276	1275	0.08	0.47	-4.06

LOCAL EQUITIES | JSE SMALL CAP COMPANIES (Cents Per Share)

COMPANY	CODE	CLOSE	PREVIOUS	1D%	1M%	YTD%
ArcelorMittal SA Limited	ACL	92	90	2.22	-8.91	-31.34
AdvTECH Ltd	ADH	3175	3120	1.76	-2.96	-6.18
Altron Limited A	AEL	2000	1977	1.16	-11.97	-5.88
AECI Limited	AFE	10925	10831	0.87	7.64	24.97
Alexander Forbes Grp Hldgs	AFH	809	815	-0.74	-4.82	-0.74
Afrimat Limited	AFT	4110	4074	0.88	-7.47	-42.07
Adcock Ingram Hldgs Ltd	AIP	6943	6933	0.14	38.09	3.63
Astral Foods Ltd	ARL	17249	17478	-1.31	-1.83	-7.76
Attacq Limited	ATT	1425	1440	-1.04	-0.49	2.74
Brait PLC	BAT	215	215	0.00	-2.71	3.86
Blue Label Telecoms Ltd	BLU	1654	1640	0.85	19.68	183.22
Burstone Group	BTN	806	806	0.00	0.00	-14.26
Coronation Fund Mngrs Ld	CML	4304	4235	1.63	7.76	9.91
Curro Holdings Limited	COH	855	846	1.06	-5.84	-34.48
Cashbuild Ltd	CSB	13900	14200	-2.11	-5.09	-34.31
DRD Gold Ltd	DRD	2701	2843	-4.99	12.59	63.40
Datec Ltd	DTC	5547	5478	1.26	-12.88	11.23
Emira Property Fund Ltd	EMI	1219	1204	1.25	10.12	11.83
Equites Prop Fund Ltd	EQU	1567	1556	0.71	1.69	6.60
Famous Brands Ltd	FBR	5900	5900	0.00	-7.78	-14.49
Fairvest Limited B	FTB	547	547	0.00	5.19	14.68
Grindrod Ltd	GND	1180	1165	1.29	1.20	-1.34
Hosken Cons Inv Ltd	HCI	12428	12711	-2.23	-14.45	-24.22
Hudaco Industries Ltd	HDC	18120	18200	-0.44	-5.47	-16.11
Hyprop Inv Ltd	HYP	4450	4428	0.50	0.72	-4.24
JSE Ltd	JSE	13400	13600	-1.47	2.48	11.00
KAP Industrial Hldgs Ltd	KAP	166	171	-2.92	-13.09	-45.93
Karoo Ltd	KRO	85000	81000	4.94	-4.07	-2.30
PSG Konsult Limited	KST	2294	2271	1.01	5.57	16.92
Libstar Holdings Ltd	LBR	310	310	0.00	-5.49	-28.74
Lighthouse Properties plc	LTE	820	812	0.99	0.61	2.12
Industrials REIT Limited	MLI	48.5	45	7.78	31.08	86.54
MAS P.L.C	MSP	2400	2385	0.63	3.90	3.00
Metair Investments Ltd	MTA	650	635	2.36	-8.96	-34.01
Motus Holdings Ltd	MTH	9120	9088	0.35	-6.63	-24.94
Murray & Roberts Hldgs	MUR	110	110	0.00	0.00	0.00
Oceana Group Ltd	OCE	5284	5311	-0.51	-0.30	-21.70
Omnia Holdings Ltd	OMN	7884	7876	0.10	-1.46	0.95
Pan African Resource plc	PAN	1482	1484	-0.13	23.71	80.95
PPC Limited	PPC	508	495	2.63	-1.36	-1.36
Raubek Group Ltd	RBX	4528	4530	-0.04	-0.18	-14.57
RFG Holdings Limited	RFG	1560	1555	0.32	-6.31	-24.60
Reunert Ltd	RLO	5379	5343	0.67	-3.76	-28.28
SA Corp Real Estate Ltd	SAC	310	306	1.31	-0.32	6.16
Super Group Ltd	SPG	1454	1488	-2.28	-9.35	-50.71
Stor-Age Prop REIT Ltd	SSS	1600	1590	0.63	2.63	2.70
Southern Sun LTD	SSU	880	930	-5.38	-2.76	-3.08
Sun International Ltd	SUI	4675	4769	-1.97	-0.53	7.47
Tharisa plc	THA	2060	2050	0.49	-0.29	27.00
Tsogo Sun Gaming Ltd	TSG	670	678	-1.18	-10.67	-34.31
Vukile Property Fund Ltd	VKE	2060	2046	0.68	4.83	14.64
Wilson Bayly Hlm-Ovc Ltd	WBO	17164	17110	0.32	-3.81	-26.42

10-YEAR BOND YIELD | SELECTED ITEMS (Basis Point Change)

REGION	YIELD	1D	1M	1Y
United States	4.28%	3	-7	34
United Kingdom	4.60%	5	1	66
Germany	2.69%	6	-2	46
Japan	1.48%	1	-1	64
South African 10Y	9.63%	-2	-21	27

GLOBAL INTEREST RATES | SELECTED ITEMS

REGION	DATE CHANGED	CURRENT RATE
United States	Nov '24	4.50%-4.75%
United Kingdom	Aug '24	4.00%
European	Jun '25	2.15%
SA Repo Rate	Jul '25	7.00%
SA Prime Rate	Jul '25	10.50%

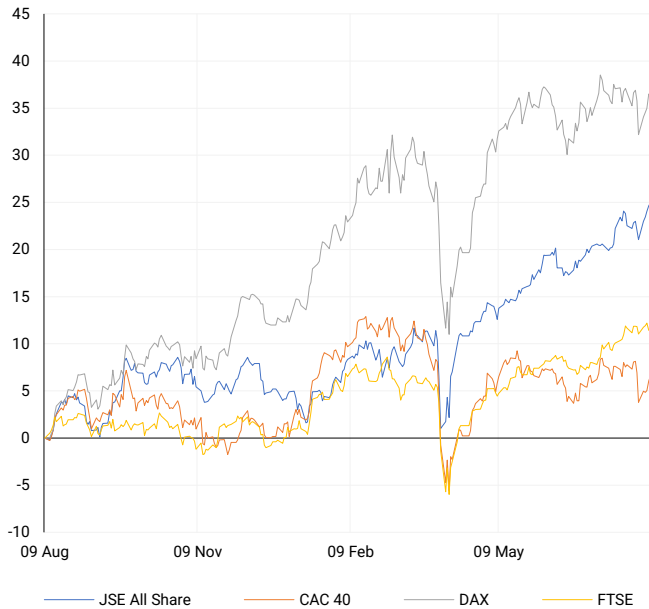
SOUTH AFRICAN 10-YEAR

2024 vs 2025 to date



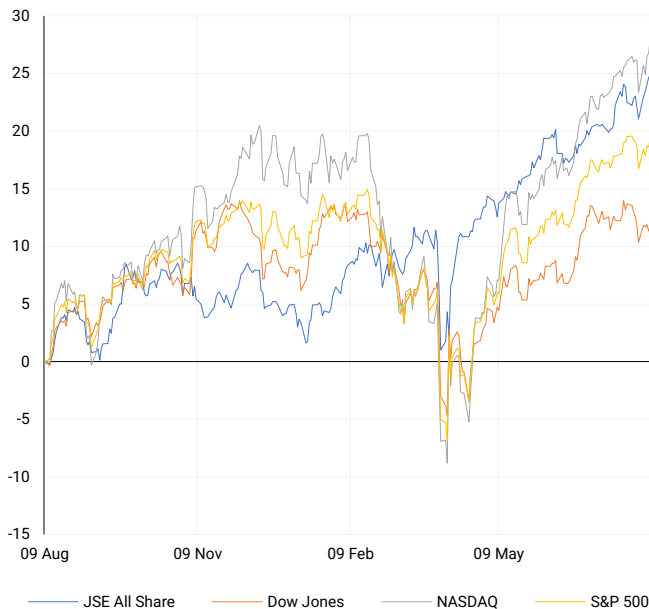
EUROPEAN INDICES

Normalised percentage performances



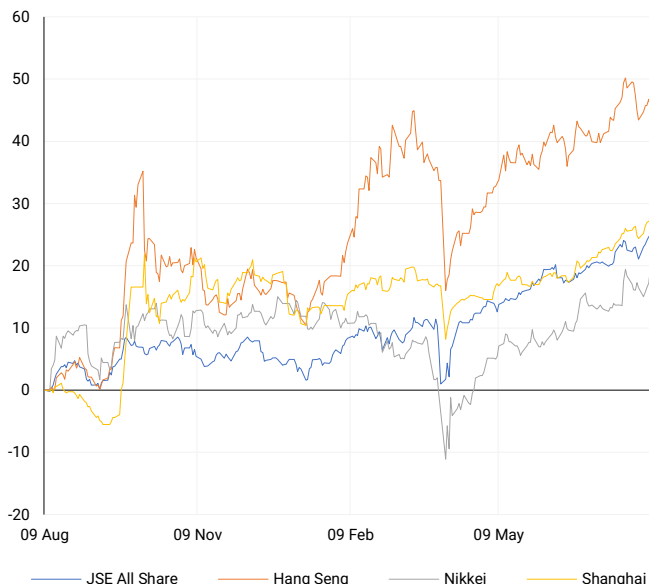
AMERICAN INDICES

Normalised percentage performances



ASIAN INDICES

Normalised percentage performances



EUROPEAN MARKET SUMMARY

SELECTED ITEMS

European equities recorded their best week in three months, with the STOXX 600 up 2.2%, led by a 1.9% rise in eurozone banks, now 56.8% higher year-to-date. Investor optimism followed speculation of a Russia-Ukraine ceasefire. In the UK, hiring intentions dropped to COVID-era lows, with only 57% of private firms planning to recruit next quarter. Norway's \$2 trillion sovereign wealth fund is reviewing Israeli holdings over ethical concerns, with an update expected Tuesday amid Gaza-related scrutiny.

EUROPEAN INDICES	CLOSE	PREVIOUS	1D%	5D%	1M%	YTD%
CAC 40	7743.00	7709.32	0.44	2.61	-0.31	4.91
DAX 30	24162.86	24192.50	-0.12	3.15	-0.18	21.37
Eurostoxx 50	5342.45	5338.20	0.08	3.26	-0.62	9.12
FTSE	9095.73	9100.77	-0.06	0.30	2.73	11.29



AMERICAN MARKET SUMMARY

SELECTED ITEMS

U.S. markets finished strongly, with the Nasdaq posting a second record close, up 3.9% for the week, supported by Apple's 13.3% surge. The S&P 500 gained 2.4%, and the Dow rose 1.3%. Investors await Tuesday's CPI release, which may challenge rate cut hopes. U.S.-India tensions escalated as New Delhi paused defence deals following higher U.S. tariffs. Expedia shares jumped 4.1% after raising forecasts. Equities could face near-term pressure from inflation surprises and geopolitical uncertainty.

AMERICAN INDICES	CLOSE	PREVIOUS	1D%	5D%	1M%	YTD%
Dow Jones	44175.61	43968.64	0.47	1.35	-0.15	3.83
Nasdaq	21450.02	21242.70	0.98	3.87	5.05	11.08
S&P 500	6389.45	6340.00	0.78	2.43	2.63	8.63
US VIX	15.15	16.57	-8.57	-25.66	-9.88	-12.68



ASIAN MARKET SUMMARY

SELECTED ITEMS

Asian equities edged higher, underpinned by strong tech earnings. Japanese markets were closed, but futures point to record highs near 42,426. In China, deflationary pressure remains, with producer prices falling more than expected and consumer prices flat, indicating weak domestic demand. Factory-gate deflation has persisted over two years, with little policy impact so far. Markets are now focused on upcoming U.S. CPI data, which could influence dollar strength, Treasury yields, and capital flows into Asia.

ASIAN INDICES	CLOSE	PREVIOUS	1D%	5D%	1M%	YTD%
Hang Seng	24858.82	25081.63	-0.89	1.43	2.94	23.92
Nikkei 225	41820.48	41059.15	1.85	2.50	5.37	4.83
Shanghai	3635.13	3639.67	-0.12	2.11	3.94	8.45



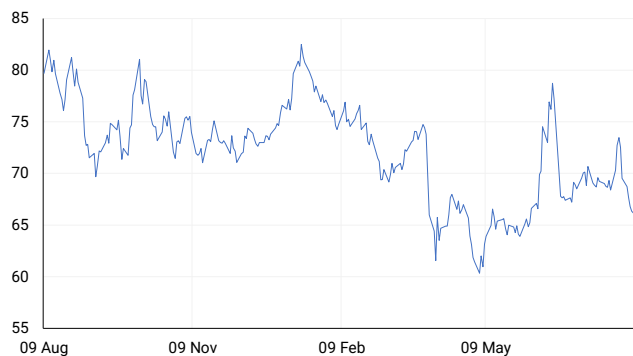
COMMODITIES MARKET SUMMARY

SELECTED ITEMS

Oil prices extended last week's 4% decline as markets priced in a potential U.S.-Russia ceasefire and increased OPEC output. Sanctions on Russian oil may be lifted following Trump's planned meeting with Putin on 15 August. Supply normalisation expectations continue to weigh on crude. Gold slipped as easing geopolitical risks reduced safe-haven demand. Market attention now turns to this week's U.S. CPI figures, which may shape Federal Reserve policy and broader commodity trading strategies.

BRENT CRUDE

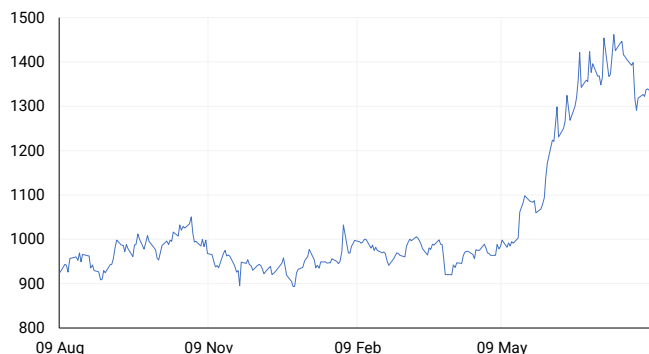
One-year



COMMODITY	LAST	CLOSE	% CHG	1D%	5D%	YTD%
Brent Crude	---	66.15	N/A	-0.32	-4.85	-11.60
Gold	---	3398.58	N/A	0.07	1.06	29.50
Palladium	---	1129.88	N/A	-2.51	-6.79	27.17
Platinum	---	1335.65	N/A	-0.25	1.30	49.49
Silver	---	38.34	N/A	0.16	3.54	32.76

PLATINUM

One-year



GOLD

One-year



CURRENCY MARKET SUMMARY

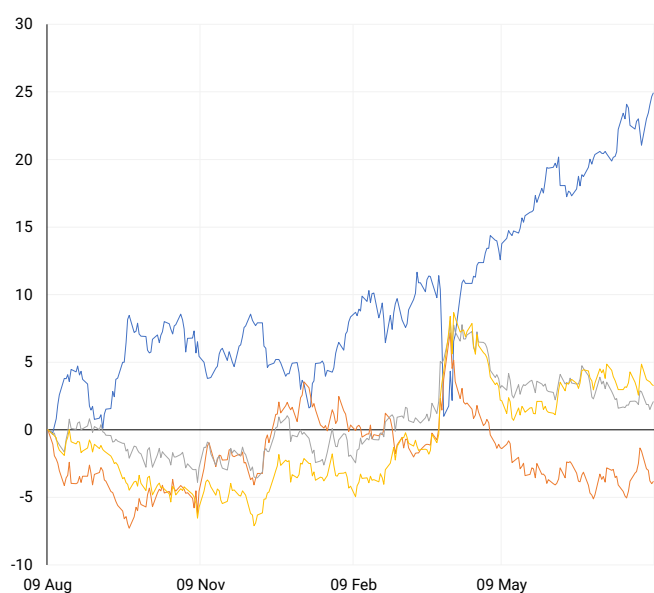
SELECTED ITEMS

The South African rand remained stable following a call between Presidents Ramaphosa and Trump ahead of trade talks, despite the 30% U.S. tariff—the highest in Sub-Saharan Africa—still in place. The U.S. dollar held steady at 98.25 after last week's losses, with traders awaiting Tuesday's CPI data. Against the yen, the dollar traded flat at 147.685 as Japanese markets were shut. Currency markets remain sensitive to trade developments and inflation data, which could shift policy outlooks.

CURRENCY PAIR	LAST	CLOSE	% CHG	1D%	5D%	YTD%
USDZAR	---	17.76	N/A	0.17	-2.28	-5.75
GBPZAR	---	23.87	N/A	0.22	-0.70	1.02
EURZAR	---	20.66	N/A	-0.10	-1.52	5.76
AUDZAR	---	11.58	N/A	0.23	-1.18	-0.79
EURUSD	---	1.16	N/A	-0.21	0.48	12.44
USDJPY	---	147.69	N/A	0.39	0.19	-6.08
GBPUSD	---	1.35	N/A	0.05	1.30	7.49
USDCHF	---	0.81	N/A	0.23	0.52	-10.93

CURRENCY PAIRS vs JSE ALL SHARE

Normalised percentage performances



USDZAR

One-year



EURUSD

One-year



SOURCES | JSE, IRESS, MONEYWEB, CNBC, BBC, CNN

Disclaimer: This note is prepared for Sanlam Private Wealth (Pty) Ltd, by K2013143132 (Pty) Ltd trading as ThompsonGreen. ThompsonGreen is an independent company contracted to Sanlam Private Wealth (Pty) Ltd. The views expressed in this note are those of ThompsonGreen and/or its analysts and not necessarily the views of Sanlam Private Wealth (Pty) Ltd, Sanlam or any officer or agent thereof. K2013143132 (Pty) Ltd trading as ThompsonGreen is a research house and not a registered broker, financial adviser or financial service provider. Our editors and customer services teams also do not give personal investment advice. The information in this document is general advice only and may not be appropriate to your particular investment objectives, financial situation or particular needs. Before investing, or if you are in any doubt about your personal situation, you should seek professional advice from a stockbroker or independent financial adviser authorised by the Financial Sector Conduct Authority.