

GLOBAL OVERVIEW | SELECTED INDICES

SOUTH AFRICAN INDICES						
	CLOSE	PREVIOUS	1D%	5D%	1M%	YTD%
All Share	101196.15	101142.62	0.05	-0.07	2.54	20.34
Top 40	93625.36	93676.22	-0.05	-0.20	2.91	24.20
Financial 15	21814.32	21748.98	0.30	1.20	1.84	5.85
Industrial 25	141116.31	140557.54	0.40	0.91	2.08	18.90
Resource 10	85240.67	86249.00	-1.17	-3.63	5.23	64.22
Mid Cap	99023.91	98898.67	0.13	-0.18	-1.80	10.73
Small Cap	96061.88	95287.95	0.81	1.08	2.05	2.87
Banks	13293.07	13247.06	0.35	1.57	2.90	4.97
Retailers	6594.07	6494.71	1.53	0.40	-4.94	-22.57
Property (J253) - TR	2726.66	2708.97	0.65	1.66	5.18	13.45

AMERICAN INDICES						
	CLOSE	PREVIOUS	1D%	5D%	1M%	YTD%
Dow Jones	44922.27	44911.82	0.02	1.04	1.31	5.59
Nasdaq	21314.95	21629.77	-1.46	-1.69	2.01	10.38
S&P 500	6411.37	6449.15	-0.59	-0.53	1.82	9.01
US VIX	15.57	14.99	3.87	5.70	-5.12	-10.26

EUROPEAN INDICES						
	CLOSE	PREVIOUS	1D%	5D%	1M%	YTD%
CAC 40	7979.08	7884.05	1.21	2.91	2.00	8.11
DAX 30	24423.07	24314.77	0.45	1.66	0.55	22.67
Eurostoxx 50	5475.00	5430.70	0.82	2.46	2.11	11.83
FTSE	9189.22	9157.74	0.34	0.45	2.19	12.43

ASIAN INDICES						
	CLOSE	PREVIOUS	1D%	5D%	1M%	YTD%
Hang Seng	25122.90	25176.85	-0.21	0.61	1.20	25.24
Nikkei 225	43546.29	43714.31	-0.38	1.94	9.36	9.15
Shanghai	3727.29	3728.03	-0.02	1.67	5.45	11.20

EARLY MORNING MARKETS						
	LAST	CLOSE	% CHG	1D%	5D%	YTD%
TENCENT	587.50	592.50	-0.84	0.94	5.90	42.37
BHP AUS	4169	4212	-1.02	1.57	2.08	8.67

NOTE: 5D% and 1M% are rolling percentage moves

INTERNATIONAL ECONOMIC CALENDAR | SELECTED EVENTS

TIME	AREA	TODAY'S EVENTS & RELEASES	PERIOD	EXP.	PREV.
10:00	SA	Inflation Rate MoM	--	0.50%	0.30%
10:00	SA	Inflation Rate YoY	--	3.40%	3.00%
10:00	SA	Core Inflation Rate MoM	--	0.40%	30.00%
10:00	SA	Core Inflation Rate YoY	--	3.20%	2.90%
--	--	--	--	--	--

TIME	AREA	PREVIOUS SESSION'S RELEASES	PERIOD	EXP.	ACT.
15:30	US	Building Permits	--	1.4m	1.35m
15:30	US	Housing Starts	--	1.3m	1.43m
--	--	--	--	--	--
--	--	--	--	--	--
--	--	--	--	--	--

JSE ALL SHARE | BEST AND WORST ONE-DAY PERFORMERS

BEST ONE-DAY % PERFORMERS						
	CODE	CLOSE	1D%	5D%	YTD%	
Sasol Limited	SOL	10588	5.01	12.42	27.15	
KAP Limited	KAP	176	4.76	1.15	-42.67	
MAS P.L.C	MSP	2585	3.90	9.30	10.94	
Sappi Ltd	SAP	2827	3.67	-2.21	-42.61	
Karoo000 Ltd	KRO	85680	3.64	0.69	-1.52	
Curro Holdings Limited	COH	859	3.49	1.30	-34.18	

WORST ONE-DAY % PERFORMERS						
	CODE	CLOSE	1D%	5D%	YTD%	
Northam Platinum Hldgs Ltd	NPH	19966	-7.78	-7.00	104.97	
African Rainbow Min Ltd	ARI	17864	-3.44	-4.21	18.78	
Thungela Resources Ltd	TGA	8420	-3.16	-9.27	-37.02	
Impala Platinum Hlgs Ltd	IMP	16200	-2.79	-3.12	84.62	
Anglo American Plat Ltd	AMS	83265	-2.76	-1.46	46.35	

JSE ALL SHARE | BEST AND WORST ONE-DAY PERFORMERS

BEST ONE-DAY % PERFORMERS						
	CODE	CLOSE	1D%	5D%	YTD%	
Sasol Limited	SOL	10588	5.01	12.42	27.15	
KAP Limited	KAP	176	4.76	1.15	-42.67	
MAS P.L.C	MSP	2585	3.90	9.30	10.94	
Sappi Ltd	SAP	2827	3.67	-2.21	-42.61	
Karoo000 Ltd	KRO	85680	3.64	0.69	-1.52	
Curro Holdings Limited	COH	859	3.49	1.30	-34.18	

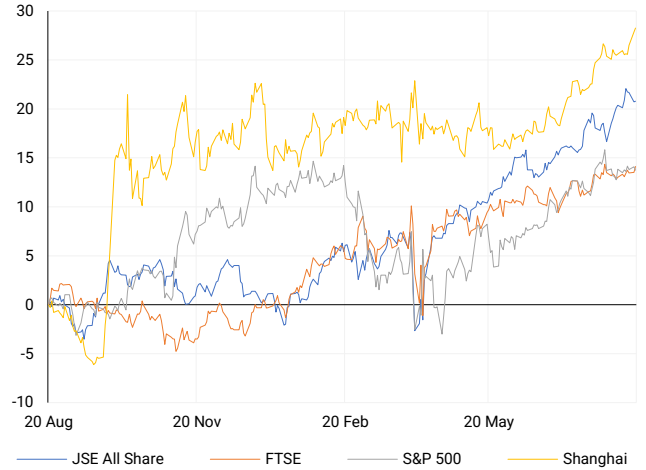
WORST ONE-DAY % PERFORMERS						
	CODE	CLOSE	1D%	5D%	YTD%	
Northam Platinum Hldgs Ltd	NPH	19966	-7.78	-7.00	104.97	
African Rainbow Min Ltd	ARI	17864	-3.44	-4.21	18.78	
Thungela Resources Ltd	TGA	8420	-3.16	-9.27	-37.02	
Impala Platinum Hlgs Ltd	IMP	16200	-2.79	-3.12	84.62	
Anglo American Plat Ltd	AMS	83265	-2.76	-1.46	46.35	

DIVIDEND DATA

COMPANY	CODE	EXPECTED DIVIDEND
TeleMasters Holdings	TLM	0.01 ZARc
Invicta Holdings	IVT	115 ZARc
Valterra Platinum	VAL	200 ZARc
Kumba Iron Ore	KIO	1660 ZARc
AngloGold Ashanti plc	ANG	80 USDC

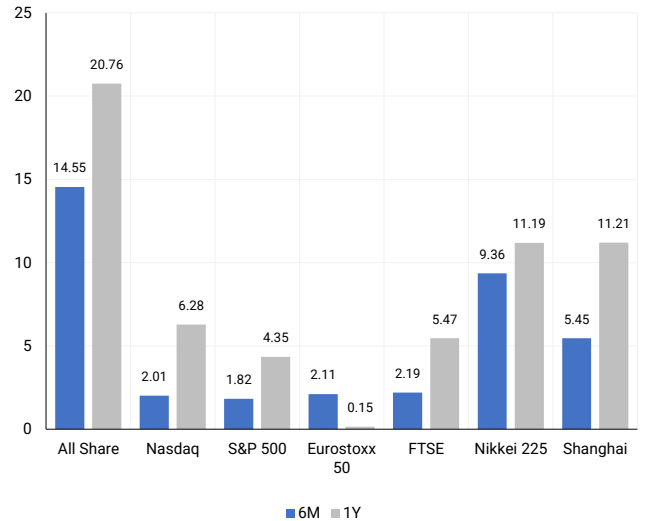
INTERNATIONAL INDICES

Normalised percentage performances - In rand terms



INTERNATIONAL INDICES

6-month & 1-year percentage performances



JSE ALL SHARE INDEX

2024 v 2025 to date



Ex Div Wed, 20 August

## LOCAL EQUITIES | JSE LARGE CAP COMPANIES (Cents Per Share)

COMPANY	CLOSE	PREVIOUS	1D%	5D%	1M%	YTD%
Absa Group Limited	18830	18915	-0.45	2.41	5.93	-0.76
Anglo American plc	51110	50805	0.60	-0.98	-4.11	-7.38
Anglogold Ashanti Ltd	92882	94954	-2.18	-6.80	9.44	120.62
Anheuser-Busch InBev SA NV	110269	109163	1.01	1.73	-8.75	17.56
BHP Group Limited	47210	47200	0.02	-0.30	3.06	2.55
BID Corporation Ltd	46764	46233	1.15	1.73	2.36	8.61
British American Tob plc	101100	101275	-0.17	-0.97	11.67	49.43
Compagnie Fin Richemont	297000	288030	3.11	5.21	-5.68	6.99
Capitec Bank Hldgs Ltd	361842	362700	-0.24	-0.08	3.56	15.44
Discovery Ltd	21100	21150	-0.24	-1.21	-3.38	8.33
Firststrand Ltd	7782	7735	0.61	0.89	1.50	2.45
Gold Fields Ltd	52694	52797	-0.20	-4.18	21.43	113.25
Glencore plc	6980	6892	1.28	-0.43	-4.11	-16.43
Impala Platinum Hlgs Ltd	16200	16665	-2.79	-3.12	-10.36	84.62
Kumba Iron Ore Ltd	29600	29646	-0.16	-2.91	-0.01	-9.27
Mondi plc	25592	25141	1.79	0.79	-4.98	-7.78
MTN Group Ltd	15606	15734	-0.81	-9.27	6.93	69.65
Naspers Ltd -N-	578683	580716	-0.35	3.04	3.65	38.67
Prosus N.V.	108456	108677	-0.20	4.30	5.60	44.79
South32 Limited	3351	3311	1.21	-4.96	1.61	-15.97
Standard Bank Group Ltd	25017	24755	1.06	5.81	7.80	12.81
Shoprite Holdings Ltd	27028	26514	1.94	-0.08	-2.50	-8.22
Sanlam Limited	8738	8732	0.07	0.97	-1.31	0.58
Sasol Limited	10588	10083	5.01	12.42	17.75	27.15
Sibanye Stillwater Ltd	3535	3590	-1.53	-8.70	-13.78	135.98
Valterra	83265	85630	-2.76	-1.46	-5.43	46.35
Vodacom Group Ltd	14108	14132	-0.17	1.50	-1.25	39.19

## SOUTH AFRICAN MARKET SUMMARY

### SELECTED ITEMS

In South Africa, the JSE All Share index edged up 0.05% on Tuesday to 101,196.2, while the Top 40 eased 0.05% to 93,625.4. Iron ore producer Assmang has warned it may shut its Beeshoek mine after losing its only customer, ArcelorMittal South Africa, putting nearly 700 jobs at risk. Assmang is a joint venture between African Rainbow Minerals and Assore. Investors are awaiting July inflation data due Wednesday, with consensus pointing to a rise from June's 3.0%, shaping expectations for Reserve Bank policy.

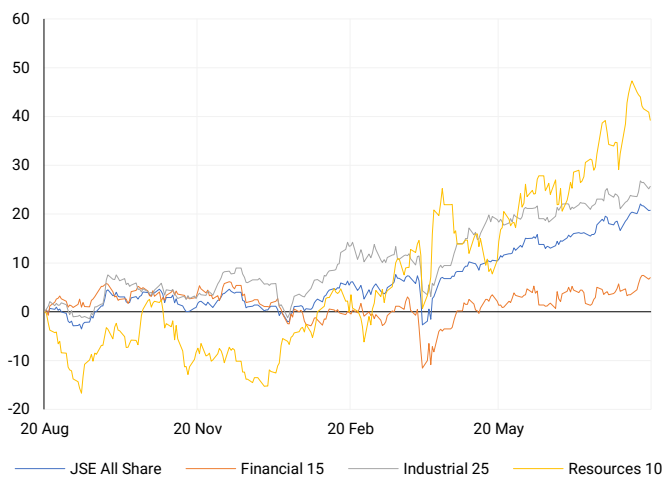
### JSE ALL SHARE

One-year



### LOCAL INDICES

Normalised percentage performances



### LOCAL SENS ANNOUNCEMENTS

#### SELECTED RELEASE

#### Harmony Gold - Harmony clears final hurdle in MAC Copper deal

Harmony Gold has cleared the final regulatory hurdle in its planned acquisition of MAC Copper, with approval from Australia's Foreign Investment Review Board following earlier consent from the South African Reserve Bank. MAC Copper owns the CSA mine in New South Wales, which produced ~41kt of copper in 2024. CEO Beyers Nel said the deal supports Harmony's gold-copper strategy and global growth ambitions. The scheme still requires shareholder approval on 29 August, court sanctioning and customary conditions.

**HAR** | -0.71% | Open : 26563 | High : 27436 | Low : 26563 | Close : 26826

#### Anglo American - Anglo disputes Peabody withdrawal on coal sale

Anglo American rejected Peabody Energy's termination of its agreement to buy its Australian steelmaking coal assets, insisting the March 2025 Moranbah North incident does not qualify as a Material Adverse Change. CEO Duncan Wanblad noted no damage to the mine or equipment and highlighted progress toward a restart, including employee approval of the risk assessment plan. Anglo has reserved its legal rights and will pursue arbitration, while noting continued unsolicited interest in the coal portfolio.

**AGL** | +0.60% | Open : 51360 | High : 52657 | Low : 50929 | Close : 51110

#### Dipula Income Fund - Dipula expands retail footprint with Soweto mall buy

Dipula, through subsidiary Luxanio Trading 181, announced the R478.1m acquisition of Protea Gardens Mall in Soweto. The 24,141m<sup>2</sup> community centre is anchored by Shoprite, Boxer and Cashbuild, with more than 70% of leases to national tenants, underpinning income stability. The acquisition aligns with Dipula's township and convenience retail strategy. Subject to approvals, the cash-funded deal could include equity or vendor placements. Forecast distributable profit is R26.6m for FY26 (nine months) and R39.9m for FY27 on a 40% LTV structure.

**DIB** | -0.52% | Open : 559 | High : 580 | Low : 559 | Close : 574

#### NEPI Rockcastle - NEPI lifts portfolio above €8bn, raises FY25 guidance

NEPI Rockcastle posted a 12.1% increase in H1 2025 net operating income, lifting its property portfolio above €8bn. Distributable EPS rose 3.1% y/y to 31.05 euro cents, with a dividend of 27.95 euro cents declared (90% payout). The vacancy rate is just 1.6%, reflecting demand for premium retail assets. Balance sheet strength remains evident with a 32.1% LTV. Management revised FY25 DEPS guidance higher to 2.5-3% growth, supported by developments and renewable energy investments.

**NRP** | +0.60% | Open : 14350 | High : 14475 | Low : 14277 | Close : 14360

### EXPECTED COMPANY REPORTING SCHEDULE

COMPANY	CODE	RELEASE	DATE
DRDGOLD	DRD	Final	Wed, 20 Aug
Sabvest Capital	SBP	Interim	Thu, 21 Aug
Spur	SUR	Final	Thu, 21 Aug
DRDGOLD	DRD	Final	Wed, 20 Aug
Sabvest Capital	SBP	Interim	Thu, 21 Aug

### BANK AND OTHER SELECTED PREFERENCE SHARES

COMPANY	CODE	CLOSE	CLEAN YIELD	NEXT LDT (Est.)
Investec Limited	INPR	10449	8.71	Tue, 10 Jun '25
Standard Bank	SBPP	9997	8.85	Wed, 03 Sept '25
Capitec	CPIP	10815	8.79	Wed, 17 Sept '25
Grindrod	GNDP	10500	9.66	Wed, 17 Sept '25
Netcare	NTCP	9699	9.72	Wed, 12 Nov '25
Discovery	DSBP	13087	8.73	Wed, 17 Sept '25

**LOCAL EQUITIES | JSE MID CAP COMPANIES** (Cents Per Share)

COMPANY	CODE	CLOSE	PREVIOUS	1D%	1M%	YTD%
Aspen Pharmacare Hldgs Ltd	APN	11239	11428	-1.65	-1.24	-31.82
African Rainbow Min Ltd	ARI	17864	18500	-3.44	-6.53	18.78
AVI Ltd	AVI	9353	9393	-0.43	-1.92	-14.76
Barloworld Ltd	BAW	11800	11781	0.16	0.00	8.73
Bidvest Ltd	BVT	24118	23626	2.08	1.37	-8.53
Boxer	BOX	6783	6792	-0.13	-1.81	5.33
Bytes Technology Grp PLC	BYI	9350	9284	0.71	12.23	-4.89
Capital&Counties Prop plc	CCO	3600	3609	-0.25	-2.31	15.13
Clicks Group Ltd	CLS	37695	36867	2.25	1.59	1.03
Dis-Chem Pharmacies Ltd	DCP	3460	3351	3.25	8.13	-4.16
Exxaro Resources Ltd	EXX	16549	16455	0.57	-4.18	4.77
Fortress Real Est INV B	FFB	2240	2235	0.22	8.32	10.56
Growthpoint Prop Ltd	GRT	1474	1474	0.00	3.37	15.79
Harmony GM Co Ltd	HAR	26826	27018	-0.71	7.80	78.03
Hammerson plc	HMN	6930	6946	-0.23	-0.13	3.90
Investec Ltd	INL	12769	12727	0.33	-4.52	2.12
Investec plc	INP	12646	12657	-0.09	-4.93	-0.19
Italtile Ltd	ITE	999	976	2.36	0.10	-29.35
Life Healthc Grp Hldgs Ltd	LHC	1393	1400	-0.50	2.96	-14.96
MultiChoice Group Ltd	MCG	12149	12145	0.03	1.75	12.49
Montauk Renewables Inc	MKR	3640	3665	-0.68	-3.75	-56.14
Mr Price Group Ltd	MRP	21308	21024	1.35	-1.12	-27.83
Momentum Met Hldgs Ltd	MTM	3594	3577	0.48	4.39	18.77
Ninety One Plc	N91	4515	4577	-1.35	-2.00	31.33
Nedbank Group Ltd	NED	23165	23098	0.29	-5.70	-17.77
Northam Platinum Hldgs Ltd	NPH	19966	21650	-7.78	-9.24	104.97
NEPI Rockcastle N.V.	NRP	14360	14275	0.60	4.66	4.07
Netcare Limited	NTC	1391	1378	0.94	3.11	-6.77
Ninety One Limited	NY1	4415	4494	-1.76	-2.06	27.45
Old Mutual Limited	OMU	1274	1273	0.08	6.88	1.84
OUTsurance Group Ltd	OUT	7460	7447	0.17	-3.75	12.18
Pick n Pay Stores Ltd	PIK	2726	2652	2.79	2.44	-11.21
Pepkor Holdings Ltd	PPH	2576	2554	0.86	-6.84	-11.02
Quilter Plc	QLT	3954	3965	-0.28	-1.10	11.19
Redefine Properties Ltd	RDF	496	496	0.00	3.33	9.01
Remgro Ltd	REM	16800	16659	0.85	-3.17	8.32
Resilient REIT Limited	RES	6600	6538	0.95	6.06	12.32
Reinet Investments S.C.A	RNI	52387	52179	0.40	0.33	17.15
Sappi Ltd	SAP	2827	2727	3.67	-2.89	-42.61
Santam Limited	SNT	43878	43391	1.12	-1.49	11.75
The Spar Group Ltd	SPP	10918	10770	1.37	-0.28	-25.27
Sirius Real Estate Ltd	SRE	2410	2412	-0.08	5.93	30.98
Tiger Brands Ltd	TBS	31486	31218	0.86	7.24	8.94
Transaction Capital Ltd	TCP	137	137	0.00	-1.44	-43.85
The Foschini Group Limited	TFG	11001	10748	2.35	-16.77	-34.52
Thungela Resources Ltd	TGA	8420	8695	-3.16	-12.29	-37.02
Telkom SA SOC Ltd	TKG	5450	5565	-2.07	-3.56	55.85
Truworths Int Ltd	TRU	6606	6529	1.18	-6.23	-36.24
Woolworths Holdings Ltd	WHL	5181	5007	3.48	5.97	-16.90
Zeda Limited	ZZD	1300	1277	1.80	2.69	-2.26

**LOCAL EQUITIES | JSE SMALL CAP COMPANIES** (Cents Per Share)

COMPANY	CODE	CLOSE	PREVIOUS	1D%	1M%	YTD%
ArcelorMittal SA Limited	ACL	93	93	0.00	-3.13	-30.60
AdvTECH Ltd	ADH	3258	3177	2.55	1.69	-3.72
Altron Limited A	AEL	2119	2092	1.29	0.62	-0.28
AECI Limited	AFE	10776	10816	-0.37	3.97	23.27
Alexander Forbes Grp Hldgs	AFH	849	844	0.59	-0.12	4.17
Afrimat Limited	AFT	4151	4085	1.62	-7.14	-41.49
Adcock Ingram Hldgs Ltd	AIP	7075	7025	0.71	39.19	5.60
Astral Foods Ltd	ARL	18844	18968	-0.65	8.26	0.77
Attacq Limited	ATT	1458	1452	0.41	2.10	5.12
Brait PLC	BAT	220	218	0.92	3.29	6.28
Blue Label Telecoms Ltd	BLU	1647	1645	0.12	7.65	182.02
Burstone Group	BTN	815	800	1.88	-2.16	-13.30
Coronation Fund Mngrs Ld	CML	4286	4262	0.56	1.40	9.45
Curro Holdings Limited	COH	859	830	3.49	-1.15	-34.18
Cashbuild Ltd	CSB	15500	15300	1.31	10.71	-26.75
DRD Gold Ltd	DRD	2610	2634	-0.91	4.78	57.89
Dataatec Ltd	DTC	5912	5736	3.07	-5.21	18.55
Emira Property Fund Ltd	EMI	1175	1150	2.17	2.62	7.80
Equites Prop Fund Ltd	EQU	1672	1650	1.33	8.71	13.74
Famous Brands Ltd	FBR	5930	5920	0.17	-1.18	-14.06
Fairvest Limited B	FTB	562	563	-0.18	4.66	17.82
Grindrod Ltd	GND	1233	1205	2.32	6.57	3.09
Hosken Cons Inv Ltd	HCI	12577	12423	1.24	-8.39	-23.31
Hudaco Industries Ltd	HDC	18360	18305	0.30	-2.29	-15.00
Hyprop Inv Ltd	HYP	4647	4604	0.93	6.39	0.00
JSE Ltd	JSE	13156	13152	0.03	-2.58	8.98
KAP Industrial Hldgs Ltd	KAP	176	168	4.76	-4.86	-42.67
Karoo Ltd	KRO	85680	82669	3.64	-4.80	-1.52
PSG Konsult Limited	KST	2300	2279	0.92	3.84	17.23
Libstar Holdings Ltd	LBR	328	336	-2.38	-4.09	-24.60
Lighthouse Properties plc	LTE	840	831	1.08	3.83	4.61
Industrials REIT Limited	MLI	39	37.5	4.00	5.41	50.00
MAS P.L.C	MSP	2585	2488	3.90	12.15	10.94
Metair Investments Ltd	MTA	640	638	0.31	-8.44	-35.03
Motus Holdings Ltd	MTH	9505	9402	1.10	-2.50	-21.78
Murray & Roberts Hldgs	MUR	110	110	0.00	0.00	0.00
Oceana Group Ltd	OCE	5158	5157	0.02	-2.57	-23.56
Omnia Holdings Ltd	OMN	7591	7449	1.91	-4.91	-2.80
Pan African Resource plc	PAN	1451	1470	-1.29	13.80	77.17
PPC Limited	PPC	522	508	2.76	0.00	1.36
Raubex Group Ltd	RBX	4621	4580	0.90	-4.33	-12.81
RFG Holdings Limited	RFG	1540	1526	0.92	1.25	-25.57
Reunert Ltd	RLO	5571	5402	3.13	-0.82	-25.72
SA Corp Real Estate Ltd	SAC	313	306	2.29	3.30	7.19
Super Group Ltd	SPG	1406	1386	1.44	-20.79	-52.34
Stor-Age Prop REIT Ltd	SSS	1645	1612	2.05	5.86	5.58
Southern Sun LTD	SSU	897	889	0.90	-0.88	-1.21
Sun International Ltd	SUI	4710	4562	3.24	-0.55	8.28
Tharisa plc	THA	2126	2070	2.71	-5.09	31.07
Tsogo Sun Gaming Ltd	TSG	675	673	0.30	-9.27	-33.82
Vukile Property Fund Ltd	VKE	2094	2083	0.53	7.27	16.53
Wilson Bayly Hlm-Ovc Ltd	WBO	17200	17035	0.97	-2.55	-26.27

**10-YEAR BOND YIELD | SELECTED ITEMS** (Basis Point Change)

REGION	YIELD	1D	1M	1Y
United States	4.31%	1	-10	51
United Kingdom	4.74%	0	7	82
Germany	2.75%	0	5	54
Japan	1.59%	0	6	71
South African 10Y	9.65%	0	-34	37

**GLOBAL INTEREST RATES | SELECTED ITEMS**

REGION	DATE CHANGED	CURRENT RATE
United States	Nov '24	4.50%-4.75%
United Kingdom	Aug '24	4.00%
European	Jun '25	2.15%
SA Repo Rate	Jul '25	7.00%
SA Prime Rate	Jul '25	10.50%

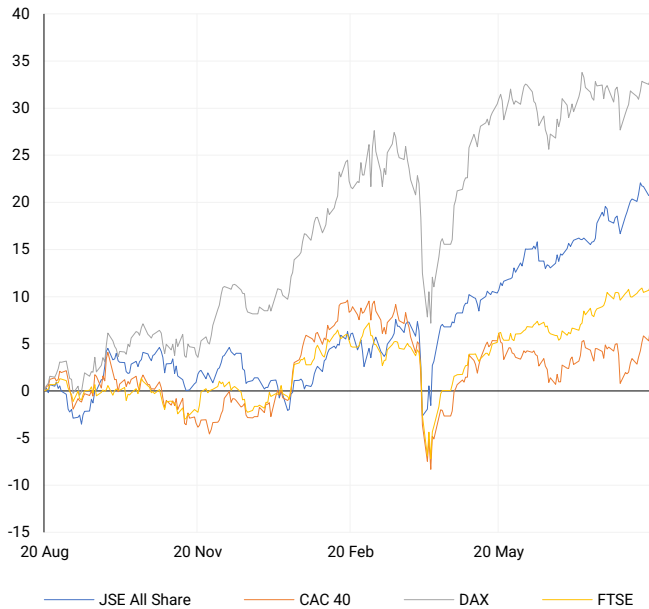
**SOUTH AFRICAN 10-YEAR**

2024 vs 2025 to date



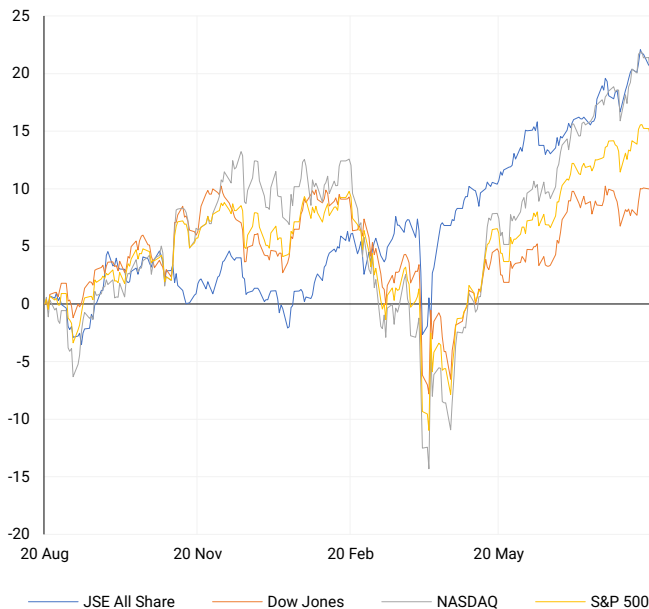
## EUROPEAN INDICES

Normalised percentage performances



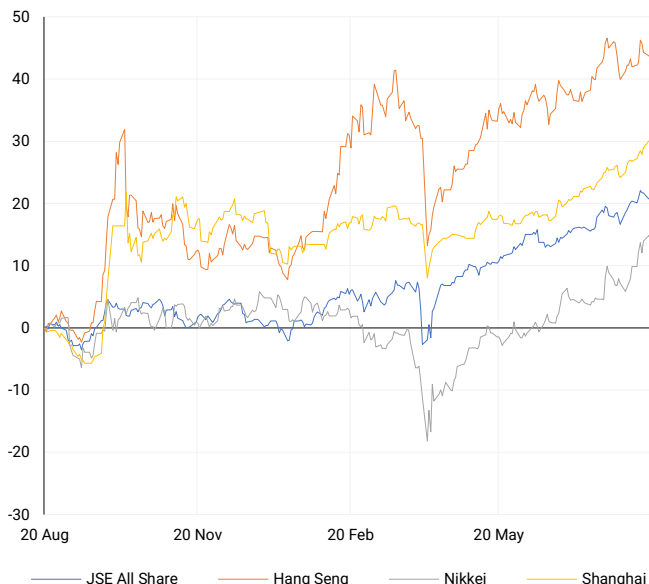
## AMERICAN INDICES

Normalised percentage performances



## ASIAN INDICES

Normalised percentage performances

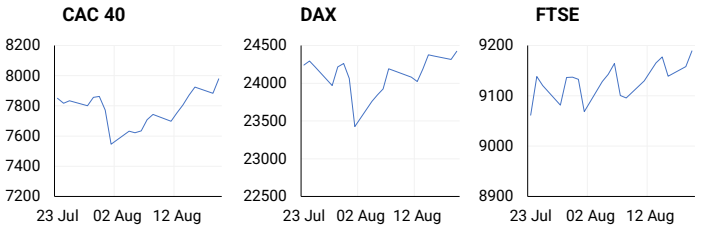


## EUROPEAN MARKET SUMMARY

### SELECTED ITEMS

European equities climbed to their strongest level in over five months, buoyed by optimism following high-level talks between U.S., European and Ukrainian leaders. The STOXX 600 gained 0.7%, although earnings expectations softened, with Q2 profits now forecast at 4.6% growth versus 4.8% a week earlier. The UK's ONS postponed July retail sales figures to September 5, continuing recent data publication setbacks. ECB statistics indicated foreign investors increased eurozone bond holdings in June, bolstering the euro's safe-haven credentials as U.S. fiscal policy uncertainty weighs on the dollar.

EUROPEAN INDICES	CLOSE	PREVIOUS	1D%	5D%	1M%	YTD%
CAC 40	7979.08	7884.05	1.21	2.91	2.00	8.11
DAX 30	24423.07	24314.77	0.45	1.66	0.55	22.67
Eurostoxx 50	5475.00	5430.70	0.82	2.46	2.11	11.83
FTSE	9189.22	9157.74	0.34	0.45	2.19	12.43



## AMERICAN MARKET SUMMARY

### SELECTED ITEMS

In the U.S., the Nasdaq and S&P 500 fell on Tuesday as technology shares weakened ahead of the Federal Reserve's annual Jackson Hole meeting. Nvidia slid 3.5%, marking its sharpest drop in four months. Investors are awaiting Fed Chair Jerome Powell's remarks for direction on interest rates. President Donald Trump repeated criticism of the Fed, arguing high rates are hurting housing and demanding cuts. Meanwhile, S&P Global maintained the U.S. "AA+" credit rating, noting tariff revenues should offset fiscal pressures from Trump's expansive tax and spending legislation.

AMERICAN INDICES	CLOSE	PREVIOUS	1D%	5D%	1M%	YTD%
Dow Jones	44922.27	44911.82	0.02	1.04	1.31	5.59
Nasdaq	21314.95	21629.77	-1.46	-1.69	2.01	10.38
S&P 500	6411.37	6449.15	-0.59	-0.53	1.82	9.01
US VIX	15.57	14.99	3.87	5.70	-5.12	-10.26



## ASIAN MARKET SUMMARY

### SELECTED ITEMS

Across Asia, China kept its one- and five-year loan prime rates steady for a third straight month, as expected. Markets in the region traded lower, tracking Wall Street's declines, while the dollar gained ahead of Jackson Hole. Hong Kong's jobless rate rose to 3.7% on weakness in retail, hospitality and property. U.S. Treasury Secretary Scott Bessent accused India of exploiting discounted Russian oil, which now accounts for 42% of its imports. In New Zealand, the central bank cut its policy rate to 3.0%, the lowest in three years, signalling further easing ahead and sending the kiwi dollar to a four-month low.

ASIAN INDICES	CLOSE	PREVIOUS	1D%	5D%	1M%	YTD%
Hang Seng	25122.90	25176.85	-0.21	0.61	1.20	25.24
Nikkei 225	43546.29	43714.31	-0.38	1.94	9.36	9.15
Shanghai	3727.29	3728.03	-0.02	1.67	5.45	11.20



## COMMODITIES MARKET SUMMARY

### SELECTED ITEMS

Gold slipped to its weakest level in three weeks as a firmer dollar and caution ahead of Jackson Hole weighed on sentiment. Oil extended gains on supply concerns, with uncertainty around Russia-Ukraine peace talks keeping sanctions in place. India's Russian oil purchases fell in July as discounts narrowed and seasonal demand slowed, with expectations of further declines in August and September. In the U.S., BP said operations at its Whiting refinery, a 440,000 bpd facility in Indiana and key Midwest fuel supplier, were disrupted by flooding, raising concerns over regional crude demand.

COMMODITY	LAST	CLOSE	% CHG	1D%	5D%	YTD%
Brent Crude	---	65.99	N/A	-0.75	-0.17	-11.81
Gold	---	3315.72	N/A	-0.51	-0.97	26.34
Palladium	---	1112.68	N/A	-0.22	-0.39	25.23
Platinum	---	1310.65	N/A	-1.57	-2.25	46.69
Silver	---	37.39	N/A	-1.68	-1.36	29.47

## BRENT CRUDE

One-year



## PLATINUM

One-year



## GOLD

One-year



## CURRENCY MARKET SUMMARY

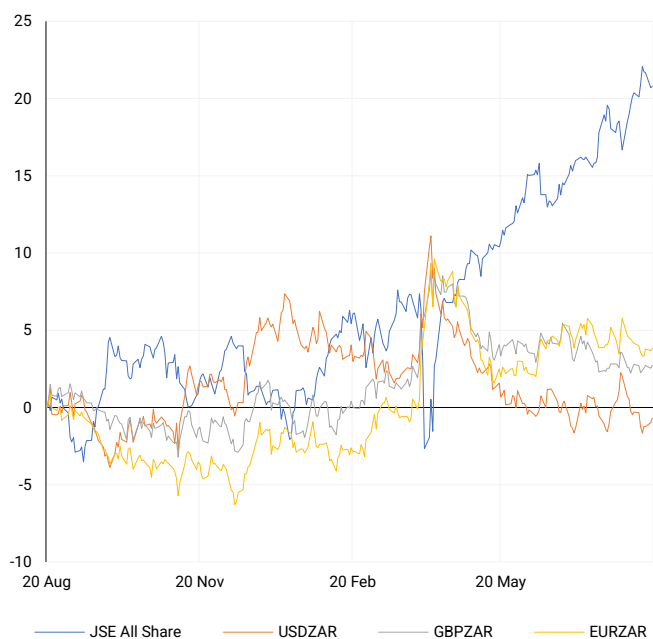
### SELECTED ITEMS

On currency markets, the rand softened on Tuesday, with traders awaiting domestic inflation data and guidance from the Fed later this week. Sterling strengthened alongside the euro on optimism around possible progress in Ukraine peace efforts. The dollar traded mixed as markets looked ahead to Jerome Powell's Friday speech at Jackson Hole, expected to clarify whether the Fed could cut rates in September. With little new U.S. data in the meantime, investor sentiment remains cautious and direction is likely to hinge on Powell's remarks.

CURRENCY PAIR	LAST	CLOSE	% CHG	1D%	5D%	YTD%
USDZAR	---	17.69	N/A	0.29	0.52	-6.13
GBPZAR	---	23.86	N/A	0.20	0.48	0.97
EURZAR	---	20.60	N/A	0.17	0.28	5.43
AUDZAR	---	11.41	N/A	-0.30	-0.66	-2.26
EURUSD	---	1.16	N/A	-0.12	-0.24	12.49
USDJPY	---	147.67	N/A	-0.14	-0.12	-6.09
GBPUSD	---	1.35	N/A	-0.09	-0.06	7.81
USDCHF	---	0.81	N/A	0.03	0.16	-10.99

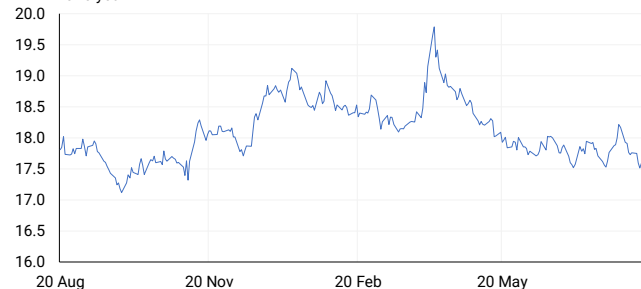
## CURRENCY PAIRS vs JSE ALL SHARE

Normalised percentage performances



## USDZAR

One-year



## EURUSD

One-year



SOURCES | JSE, IRESS, MONEYWEB, CNBC, BBC, CNN

**Disclaimer:** This note is prepared for Sanlam Private Wealth (Pty) Ltd, by K2013143132 (Pty) Ltd trading as ThompsonGreen. ThompsonGreen is an independent company contracted to Sanlam Private Wealth (Pty) Ltd. The views expressed in this note are those of ThompsonGreen and/or its analysts and not necessarily the views of Sanlam Private Wealth (Pty) Ltd, Sanlam or any officer or agent thereof. K2013143132 (Pty) Ltd trading as ThompsonGreen is a research house and not a registered broker, financial adviser or financial service provider. Our editors and customer services teams also do not give personal investment advice. The information in this document is general advice only and may not be appropriate to your particular investment objectives, financial situation or particular needs. Before investing, or if you are in any doubt about your personal situation, you should seek professional advice from a stockbroker or independent financial adviser authorised by the Financial Sector Conduct Authority.