

GLOBAL OVERVIEW | SELECTED INDICES

SOUTH AFRICAN INDICES						
	CLOSE	PREVIOUS	1D%	5D%	1M%	YTD%
All Share	101750.49	101055.87	0.69	-0.24	2.10	20.99
Top 40	94120.40	93491.95	0.67	-0.47	2.31	24.86
Financial 15	21816.23	21812.34	0.02	-0.43	2.26	5.86
Industrial 25	140385.58	140910.51	-0.37	-1.11	1.56	18.29
Resource 10	87814.00	85012.40	3.30	0.88	3.44	69.17
Mid Cap	99935.53	98915.87	1.03	0.80	-1.31	11.75
Small Cap	96864.68	96096.12	0.80	1.54	2.58	3.73
Banks	13237.10	13260.30	-0.17	-1.16	3.25	4.53
Retailers	6550.14	6545.32	0.07	0.11	-3.31	-23.09
Property (J253) - TR	2755.69	2747.26	0.31	2.00	6.03	14.65

AMERICAN INDICES						
	CLOSE	PREVIOUS	1D%	5D%	1M%	YTD%
Dow Jones	44785.50	44938.31	-0.34	-0.28	1.04	5.27
Nasdaq	21100.31	21172.86	-0.34	-2.81	0.60	9.27
S&P 500	6370.17	6395.78	-0.40	-1.52	1.02	8.31
US VIX	16.60	15.69	5.80	11.94	-0.30	-4.32

EUROPEAN INDICES						
	CLOSE	PREVIOUS	1D%	5D%	1M%	YTD%
CAC 40	7938.29	7973.03	-0.44	0.86	1.80	7.55
DAX 30	24293.34	24276.97	0.07	-0.35	-0.06	22.02
Eurostoxx 50	5459.60	5469.90	-0.19	0.44	2.14	11.51
FTSE	9309.20	9288.14	0.23	1.44	3.29	13.90

ASIAN INDICES						
	CLOSE	PREVIOUS	1D%	5D%	1M%	YTD%
Hang Seng	25104.61	25165.94	-0.24	-1.63	0.44	25.15
Nikkei 225	42610.17	42888.55	-0.65	-0.09	7.01	6.81
Shanghai	3771.10	3766.21	0.13	2.85	5.94	12.51

EARLY MORNING MARKETS						
	LAST	CLOSE	% CHG	1D%	5D%	YTD%
TENCENT	601.50	593.00	1.43	0.42	0.51	42.49
BHP AUS	4208	4206	0.05	0.74	1.32	8.51

NOTE: 5D% and 1M% are rolling percentage moves

INTERNATIONAL ECONOMIC CALENDAR | SELECTED EVENTS

TIME	AREA	TODAY'S EVENTS & RELEASES	PERIOD	EXP.	PREV.
16:00	US	Fed Chair Powell Speaks	--	--	--
18:00	US	President Trump Speaks	--	--	--
Day 2	US	Jackson Hole Symposium	--	--	--
--	--	--	--	--	--
--	--	--	--	--	--

TIME	AREA	PREVIOUS SESSION'S RELEASES	PERIOD	EXP.	ACT.
10:00	EU	Flash Manufacturing PMI	--	49.5	50.5
10:30	UK	Flash Manufacturing PMI	--	48.2	47.3
13:00	SA	Building Permits YoY	--	18.00%	-13.30%
14:30	US	Unemployment Claims	--	226k	235k
15:45	US	Flash Manufacturing PMI	--	49.7	53.3

JSE ALL SHARE | BEST AND WORST ONE-DAY PERFORMERS

BEST ONE-DAY % PERFORMERS						
	CODE	CLOSE	1D%	5D%	YTD%	
DRD Gold Ltd	DRD	3016	13.55	14.55	82.46	
Exxaro Resources Ltd	EXX	17801	7.87	8.24	12.70	
Montauk Renewables Inc	MKR	3900	7.14	5.55	-53.01	
KAP Limited	KAP	182	7.06	7.06	-40.72	
Sibanye Stillwater Ltd	SSW	3678	4.88	-2.28	145.53	
Harmony GM Co Ltd	HAR	28343	4.70	4.56	88.10	

WORST ONE-DAY % PERFORMERS						
	CODE	CLOSE	1D%	5D%	YTD%	
Curro Holdings Limited	COH	820	-3.07	-1.20	-37.16	
Brait PLC	BAT	215	-2.27	0.94	3.86	
Metair Investments Ltd	MTA	629	-1.72	0.64	-36.14	
Afrimat Limited	AFT	4048	-1.53	-0.93	-42.95	
Hudaco Industries Ltd	HDC	18575	-1.20	3.54	-14.00	

DIVIDEND DATA

COMPANY	CODE	EXPECTED DIVIDEND	COMPANY	CODE	EXPECTED DIVIDEND
Mpact	MPT	30 ZARc	Quiter plc	QLT	2 GBPP
Weaver Fintech	WVR	140 ZARc	--	--	--
Argent Industrial	ART	67 ZARc	--	--	--
AECI	AFE	100 ZARc	--	--	--
Alphamin Resources	APH	7 CAD	--	--	--

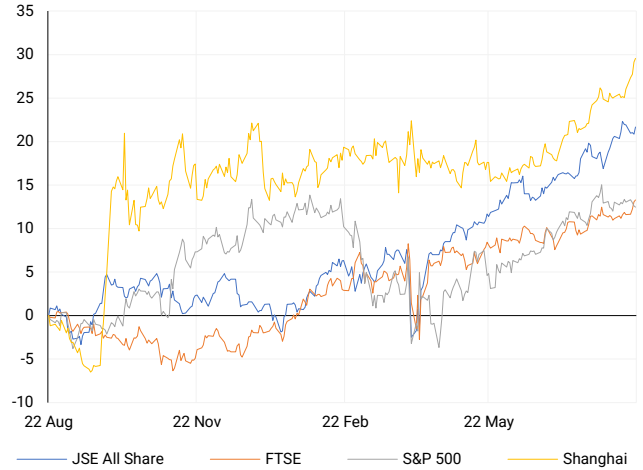
Last date to trade **Tue, 26 August**

SOURCES | JSE, IRESS, MONEYWEB, CNBC, BBC, CNN

PLEASE SEE THE BOTTOM OF THE LAST PAGE FOR THE FULL DISCLAIMER

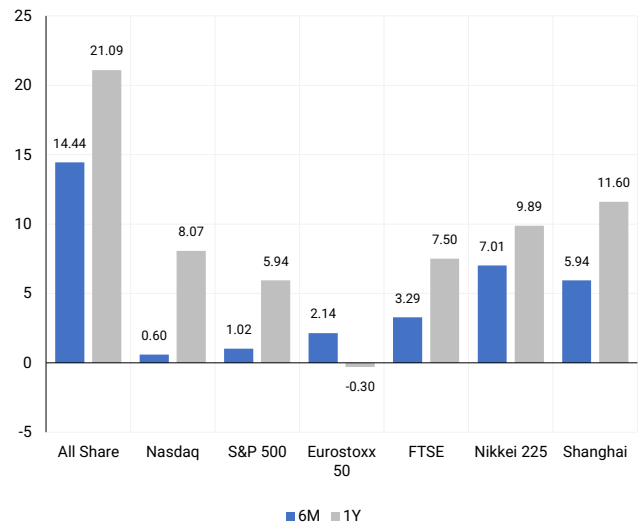
INTERNATIONAL INDICES

Normalised percentage performances - In rand terms



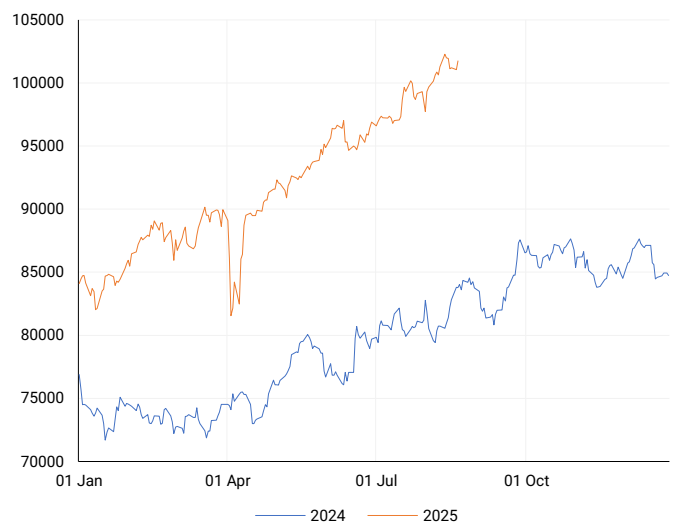
INTERNATIONAL INDICES

6-month & 1-year percentage performances



JSE ALL SHARE INDEX

2024 v 2025 to date



## LOCAL EQUITIES | JSE LARGE CAP COMPANIES (Cents Per Share)

COMPANY	CLOSE	PREVIOUS	1D%	5D%	1M%	YTD%
Absa Group Limited	18721	18745	-0.13	-1.82	6.07	-1.34
Anglo American plc	51750	51200	1.07	2.01	-5.99	-6.22
Anglogold Ashanti Ltd	95795	92100	4.01	-1.63	6.52	127.54
Anheuser-Busch InBev SA NV	111742	111649	0.08	4.51	-8.13	19.13
BHP Group Limited	47610	47210	0.85	0.86	0.27	3.41
BID Corporation Ltd	46380	46850	-1.00	0.06	1.87	7.72
British American Tob plc	104040	103800	0.23	3.32	13.42	53.78
Compagnie Fin Richemont	295088	297000	-0.64	2.11	-5.42	6.30
Capitec Bank Hldgs Ltd	362748	362628	0.03	-1.37	4.25	15.73
Discovery Ltd	21332	21207	0.59	0.52	-3.12	9.52
Firststrand Ltd	7682	7673	0.12	-1.79	1.31	1.13
Gold Fields Ltd	54284	52342	3.71	2.28	19.36	119.68
Glencore plc	6968	7004	-0.51	-1.12	-6.89	-16.57
Impala Platinum Hlgs Ltd	16548	16150	2.46	-1.27	-12.33	88.58
Kumba Iron Ore Ltd	28812	28049	2.72	-3.87	-6.71	-11.69
Mondi plc	25083	25255	-0.68	-1.38	-8.42	-9.61
MTN Group Ltd	15650	15712	-0.39	-9.37	8.08	70.13
Naspers Ltd -N-	567189	573401	-1.08	-2.37	0.53	35.91
Prosus N.V.	107912	107980	-0.06	-0.52	4.36	44.07
South32 Limited	3279	3252	0.83	-1.38	-6.31	-17.78
Standard Bank Group Ltd	24930	25117	-0.74	0.08	8.06	12.42
Shoprite Holdings Ltd	27036	26828	0.78	0.29	-1.15	-8.20
Sanlam Limited	8793	8776	0.19	0.09	0.07	1.21
Sasol Limited	10800	10450	3.35	9.98	12.91	29.70
Sibanye Stillwater Ltd	3678	3507	4.88	-2.28	-13.36	145.53
Valterra	86500	83660	3.39	0.73	-6.99	52.03
Vodacom Group Ltd	14300	14152	1.05	-1.04	-0.29	41.08

## SOUTH AFRICAN MARKET SUMMARY

### SELECTED ITEMS

The Top 40 index rose 0.67% to 94,120.4 points, while the All Share index gained 0.69% to 101,750.5 points. Growthpoint Properties (GRT) will launch a blockchain-enabled renewable energy solution in October 2025, allowing tenants to consume certified green power and trade Renewable Energy Certificates. Shoprite's Checkers is piloting "Xpress Trolleys" in two Western Cape stores to bypass traditional checkouts. West Wits Mining plans South Africa's first new underground gold mine in 15 years at Qala Shallows, while RMB Holdings (RMH) confirmed director changes at Atterbury Property amid governance tensions.

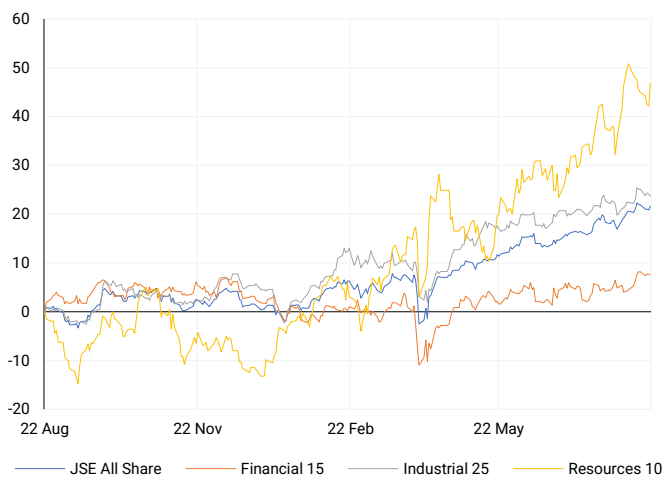
### JSE ALL SHARE

One-year



### LOCAL INDICES

Normalised percentage performances



### LOCAL SENS ANNOUNCEMENTS

#### SELECTED RELEASE

##### Exxaro – Strong Interim Growth

Exxaro reported H1 2025 revenue up 8% to R20.6bn and net operating profit up 11% to R4.1bn. Attributable and headline earnings rose 13% to 1,717cps and 1,724cps. The board declared an interim dividend of 843cps, up 6%, payable 6 October. Results were reviewed by KPMG with an unmodified conclusion.

**EXX | +7.87% | Open : 16802 | High : 18478 | Low : 16802 | Close : 17801**

##### Wilson Bayly Holmes-Ovcon – Robust Order Book

WBHO delivered marginal revenue growth with improved margins across units. West African projects performed strongly, and the UK remained resilient. Order book expanded 23% to R37.6bn. EPS is forecast to rise 20–30% and HEPS 10–20%, with results due 9 September.

**WBO | +3.55% | Open : 16918 | High : 17589 | Low : 16896 | Close : 17583**

##### Aspen – Challenging Year, Strategic Focus +0.03%

Commercial Pharmaceuticals achieved double-digit constant-currency growth, boosted by Mounjaro rollout and Latam acquisitions. Impairments of R4.1bn, China restructuring costs, and a manufacturing dispute reduced Manufacturing EBITDA by ~60%. NHEPS is expected to fall 27–32%, HEPS 40–45%, and EPS over 120%. Focus remains on GLP-1, insulin, and sterile facility optimisation.

**APN | +0.03% | Open : 11150 | High : 11274 | Low : 10929 | Close : 11192**

##### Spur Corporation – Strong Operational Momentum +7.73%

FY2025 revenue rose 11.2% to R3.9bn, with franchised turnovers up 8.3%. Profit before tax increased 17.5% to R401.7m, EPS and HEPS grew 17.2% and 16.8%. Dividend declared at 299cps (+40.4%, 9.1% yield). Cash from operations strengthened to R463.1m; ROE improved to 31.7%.

**SUR | +7.73% | Open : 3595 | High : 3756 | Low : 3450 | Close : 3555**

### EXPECTED COMPANY REPORTING SCHEDULE

COMPANY	CODE	RELEASE	DATE
Adcock Ingram	AIP	Final	Fri, 22 Aug
Grindrod	GND	Interim	Fri, 22 Aug
Gold Fields	GFI	Interim	Fri, 22 Aug
Adcock Ingram	AIP	Final	Fri, 22 Aug
Grindrod	GND	Interim	Fri, 22 Aug

### BANK AND OTHER SELECTED PREFERENCE SHARES

COMPANY	CODE	CLOSE	CLEAN YIELD	NEXT LDT (Est.)
Investec Limited	INPR	10200	8.94	Tue, 10 Jun '25
Standard Bank	SBPP	9975	8.87	Wed, 03 Sept '25
Capitec	CPIP	10815	8.80	Wed, 17 Sept '25
Grindrod	GNDP	10600	9.57	Wed, 17 Sept '25
Netcare	NTCP	9700	9.72	Wed, 12 Nov '25
Discovery	DSBP	12800	8.94	Wed, 17 Sept '25

**LOCAL EQUITIES | JSE MID CAP COMPANIES** (Cents Per Share)

COMPANY	CODE	CLOSE	PREVIOUS	1D%	1M%	YTD%
Aspen Pharmicare Hldgs Ltd	APN	11192	11189	0.03	-1.96	-32.11
African Rainbow Min Ltd	ARI	18353	17565	4.49	-6.58	22.04
AVI Ltd	AVI	9386	9470	-0.89	-0.51	-14.45
Barloworld Ltd	BAW	11650	11750	-0.85	-1.35	7.34
Bidvest Ltd	BVT	23778	23977	-0.83	2.20	-9.82
Boxer	BOX	7004	6810	2.85	1.85	8.76
Bytes Technology Grp PLC	BYI	9500	9275	2.43	15.32	-3.37
Capital&Counties Prop plc	CCO	3538	3562	-0.67	-6.15	13.14
Clicks Group Ltd	CLS	38250	37676	1.52	4.12	2.52
Dis-Chem Pharmacies Ltd	DCP	3430	3441	-0.32	8.34	-4.99
Exxaro Resources Ltd	EXX	17801	16502	7.87	1.18	12.70
Fortress Real Est INV B	FFB	2290	2284	0.26	11.76	13.03
Growthpoint Prop Ltd	GRT	1482	1481	0.07	4.22	16.42
Harmony GM Co Ltd	HAR	28343	27070	4.70	5.92	88.10
Hammerson plc	HMN	6890	6946	-0.81	-3.16	3.30
Investec Ltd	INL	12994	13049	-0.42	-2.72	3.92
Investec plc	INP	12939	12977	-0.29	-2.86	2.12
Italtile Ltd	ITE	1004	1002	0.20	0.50	-29.00
Life Healthc Grp Hldgs Ltd	LHC	1361	1359	0.15	0.22	-16.91
MultiChoice Group Ltd	MCG	12144	12148	-0.03	2.39	12.44
Montauk Renewables Inc	MKR	3900	3640	7.14	-8.24	-53.01
Mr Price Group Ltd	MRP	21292	21300	-0.04	1.39	-27.88
Momentum Met Hldgs Ltd	MTM	3617	3605	0.33	6.66	19.53
Ninety One Plc	N91	4507	4500	0.16	-2.91	31.09
Nedbank Group Ltd	NED	22932	22939	-0.03	-5.12	-18.60
Northam Platinum Hldgs Ltd	NPH	20600	20343	1.26	-6.62	111.48
NEPI Rockcastle N.V.	NRP	14640	14544	0.66	6.09	6.09
Netcare Limited	NTC	1384	1380	0.29	2.29	-7.24
Ninety One Limited	NY1	4432	4397	0.80	-2.42	27.94
Old Mutual Limited	OMU	1289	1286	0.23	2.71	3.04
OUTsurance Group Ltd	OUT	7450	7480	-0.40	-3.02	12.03
Pick n Pay Stores Ltd	PIK	2812	2712	3.69	6.72	-8.40
Pepkor Holdings Ltd	PPH	2550	2549	0.04	-5.76	-11.92
Quilter Plc	QLT	3945	3940	0.13	-1.96	10.94
Redefine Properties Ltd	RDF	499	493	1.22	4.18	9.67
Remgro Ltd	REM	16834	16672	0.97	-1.78	8.54
Resilient REIT Limited	RES	6629	6692	-0.94	5.83	12.81
Reinet Investments S.C.A	RNI	53084	53000	0.16	0.35	18.71
Sappi Ltd	SAP	2804	2801	0.11	-1.68	-43.08
Santam Limited	SNT	43633	43982	-0.79	-0.70	11.13
The Spar Group Ltd	SPP	10900	10859	0.38	2.73	-25.39
Sirius Real Estate Ltd	SRE	2417	2431	-0.58	3.33	31.36
Tiger Brands Ltd	TBS	31600	31860	-0.82	8.61	9.33
Transaction Capital Ltd	TCP	140	140	0.00	2.94	-42.62
The Foschini Group Limited	TFG	11116	11143	-0.24	-12.82	-33.83
Thungela Resources Ltd	TGA	9050	8727	3.70	-7.85	-32.31
Telkom SA SOC Ltd	TKG	5407	5446	-0.72	-4.08	54.62
Truworths Int Ltd	TRU	6555	6560	-0.08	-4.52	-36.73
Woolworths Holdings Ltd	WHL	5080	5054	0.51	5.79	-18.52
Zeda Limited	ZZD	1280	1280	0.00	1.59	-3.76

**LOCAL EQUITIES | JSE SMALL CAP COMPANIES** (Cents Per Share)

COMPANY	CODE	CLOSE	PREVIOUS	1D%	1M%	YTD%
ArcelorMittal SA Limited	ACL	93	93	0.00	-1.06	-30.60
AdvTECH Ltd	ADH	3220	3244	-0.74	0.09	-4.85
Altron Limited A	AEL	2104	2098	0.29	-1.03	-0.99
AECI Limited	AFE	10696	10771	-0.70	3.19	22.35
Alexander Forbes Grp Hldgs	AFH	845	845	0.00	-2.87	3.68
Afrimat Limited	AFT	4048	4111	-1.53	-12.48	-42.95
Adcock Ingram Hldgs Ltd	AIP	7098	7160	-0.87	35.98	5.94
Astral Foods Ltd	ARL	19027	18654	2.00	9.74	1.75
Attacq Limited	ATT	1465	1460	0.34	2.81	5.62
Brait PLC	BAT	215	220	-2.27	-0.46	3.86
Blue Label Telecoms Ltd	BLU	1704	1655	2.96	13.52	191.78
Burstone Group	BTN	842	830	1.45	1.45	-10.43
Coronation Fund Mngrs Ld	CML	4321	4300	0.49	3.27	10.34
Curro Holdings Limited	COH	820	846	-3.07	-6.39	-37.16
Cashbuild Ltd	CSB	15400	15300	0.65	7.69	-27.22
DRD Gold Ltd	DRD	3016	2656	13.55	13.90	82.46
Datatec Ltd	DTC	5985	5919	1.12	-5.09	20.01
Emira Property Fund Ltd	EMI	1205	1208	-0.25	3.17	10.55
Equites Prop Fund Ltd	EQU	1670	1682	-0.71	7.05	13.61
Famous Brands Ltd	FBR	5817	5825	-0.14	-0.15	-15.70
Fairvest Limited B	FTB	566	567	-0.18	4.43	18.66
Grindrod Ltd	GND	1304	1277	2.11	10.98	9.03
Hosken Cons Inv Ltd	HCI	12236	12314	-0.63	-10.27	-25.39
Hudaco Industries Ltd	HDC	18575	18800	-1.20	-1.34	-14.00
Hyprop Inv Ltd	HYP	4745	4725	0.42	9.33	2.11
JSE Ltd	JSE	13073	13102	-0.22	-3.88	8.29
KAP Industrial Hldgs Ltd	KAP	182	170	7.06	1.11	-40.72
Karoo Ltd	KRO	83102	83526	-0.51	-8.17	-4.48
PSG Konsult Limited	KST	2315	2300	0.65	4.51	17.99
Libstar Holdings Ltd	LBR	331	330	0.30	-5.43	-23.91
Lighthouse Properties plc	LTE	840	840	0.00	5.00	4.61
Industrials REIT Limited	MLI	42.5	38	11.84	19.72	63.46
MAS P.L.C	MSP	2408	2413	-0.21	2.60	3.35
Metair Investments Ltd	MTA	629	640	-1.72	-1.41	-36.14
Motus Holdings Ltd	MTH	9538	9470	0.72	-0.14	-21.50
Murray & Roberts Hldgs	MUR	110	110	0.00	0.00	0.00
Oceana Group Ltd	OCE	5119	5143	-0.47	-3.60	-24.14
Omnia Holdings Ltd	OMN	7465	7456	0.12	-6.23	-4.42
Pan African Resource plc	PAN	1487	1452	2.41	14.03	81.56
PPC Limited	PPC	524	520	0.77	0.00	1.75
Raubek Group Ltd	RBX	4529	4549	-0.44	-6.62	-14.55
RFG Holdings Limited	RFG	1517	1550	-2.13	-0.52	-26.68
Reunert Ltd	RLO	5487	5427	1.11	-2.37	-26.84
SA Corp Real Estate Ltd	SAC	315	318	-0.94	3.28	7.88
Super Group Ltd	SPG	1407	1398	0.64	-20.51	-52.31
Stor-Age Prop REIT Ltd	SSS	1663	1679	-0.95	6.67	6.74
Southern Sun LTD	SSU	882	880	0.23	-1.67	-2.86
Sun International Ltd	SUI	4577	4625	-1.04	-3.70	5.22
Tharisa plc	THA	2125	2125	0.00	-7.61	31.01
Tsogo Sun Gaming Ltd	TSG	680	676	0.59	-9.33	-33.33
Vukile Property Fund Ltd	VKE	2162	2136	1.22	10.48	20.31
Wilson Bayly Hlm-Ovc Ltd	WBO	17583	16981	3.55	-0.40	-24.62

**10-YEAR BOND YIELD | SELECTED ITEMS** (Basis Point Change)

REGION	YIELD	1D	1M	1Y
United States	4.33%	0	-2	47
United Kingdom	4.73%	0	13	84
Germany	2.75%	4	17	51
Japan	1.60%	1	8	74
South African 10Y	9.63%	4	-22	42

**GLOBAL INTEREST RATES | SELECTED ITEMS**

REGION	DATE CHANGED	CURRENT RATE
United States	Nov '24	4.50%-4.75%
United Kingdom	Aug '24	4.00%
European	Jun '25	2.15%
SA Repo Rate	Jul '25	7.00%
SA Prime Rate	Jul '25	10.50%

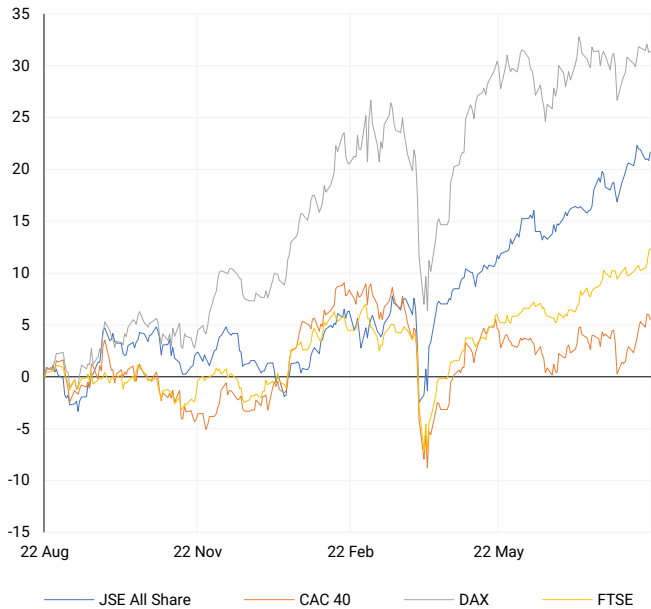
**SOUTH AFRICAN 10-YEAR**

2024 vs 2025 to date



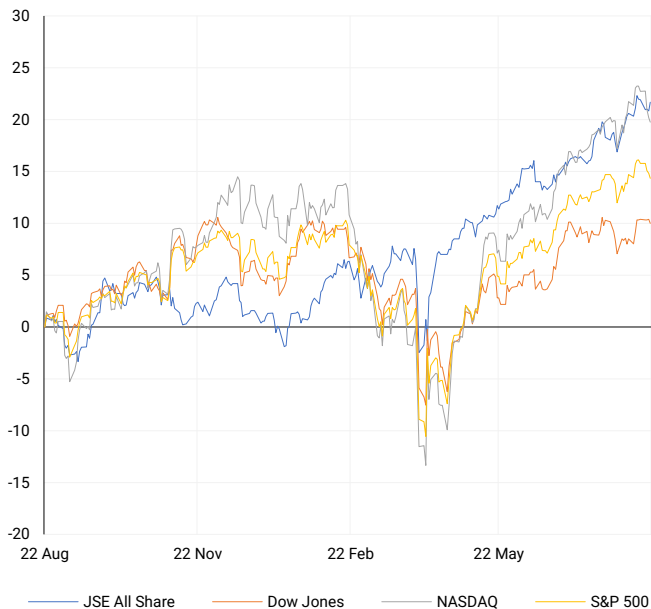
## EUROPEAN INDICES

Normalised percentage performances



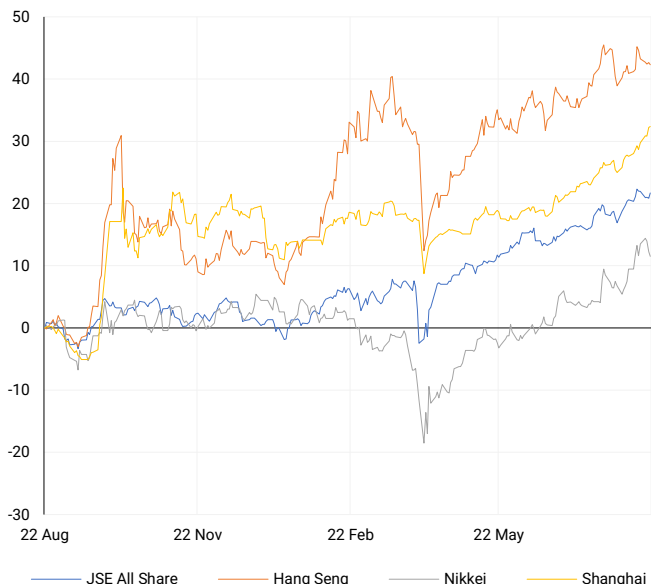
## AMERICAN INDICES

Normalised percentage performances



## ASIAN INDICES

Normalised percentage performances

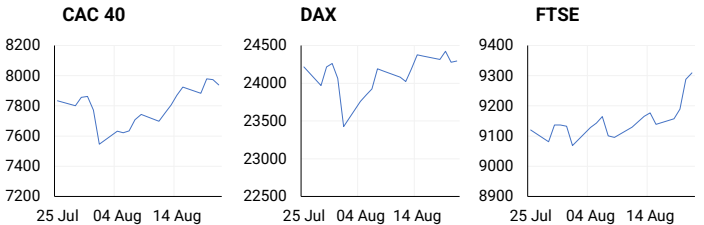


## EUROPEAN MARKET SUMMARY

### SELECTED ITEMS

European markets were mixed on Thursday, 21 August 2025, ahead of the US Federal Reserve's Jackson Hole symposium. The FTSE 100 closed at a record high for the third straight day, supported by strong business activity and a firm pound. Germany's DAX and France's CAC 40 edged lower as investors awaited guidance from Fed Chair Jerome Powell. Eurozone composite PMI rose to a 15-month high, signalling robust private sector growth.

EUROPEAN INDICES	CLOSE	PREVIOUS	1D%	5D%	1M%	YTD%
CAC 40	7938.29	7973.03	-0.44	0.86	1.80	7.55
DAX 30	24293.34	24276.97	0.07	-0.35	-0.06	22.02
Eurostoxx 50	5459.60	5469.90	-0.19	0.44	2.14	11.51
FTSE	9309.20	9288.14	0.23	1.44	3.29	13.90



## AMERICAN MARKET SUMMARY

### SELECTED ITEMS

US equities declined broadly, with the S&P 500 falling for a fifth consecutive session ahead of Powell's Jackson Hole speech. Fed funds futures price in a ~74% chance of a September rate cut amid inflation concerns. July FOMC minutes highlighted labour and inflation risks, while two governors dissented on holding rates steady—the first dual dissent since 1993. Profit-taking in tech stocks, including Nvidia, Palantir, and Meta, weighed on markets, although retail bearish sentiment eased slightly.

AMERICAN INDICES	CLOSE	PREVIOUS	1D%	5D%	1M%	YTD%
Dow Jones	44785.50	44938.31	-0.34	-0.28	1.04	5.27
Nasdaq	21100.31	21172.86	-0.34	-2.81	0.60	9.27
S&P 500	6370.17	6395.78	-0.40	-1.52	1.02	8.31
US VIX	16.60	15.69	5.80	11.94	-0.30	-4.32



## ASIAN MARKET SUMMARY

### SELECTED ITEMS

Markets traded mixed as investors awaited Fed guidance. Japan's core inflation eased to 3.1% in July but remains above the Bank of Japan's 2% target, fuelling expectations of an October rate hike. Nvidia reportedly halted production of China-specific H20 chips after Beijing instructed local firms to stop purchases, highlighting ongoing US-China tech tensions.

ASIAN INDICES	CLOSE	PREVIOUS	1D%	5D%	1M%	YTD%
Hang Seng	25104.61	25165.94	-0.24	-1.63	0.44	25.15
Nikkei 225	42610.17	42888.55	-0.65	-0.09	7.01	6.81
Shanghai	3771.10	3766.21	0.13	2.85	5.94	12.51



## COMMODITIES MARKET SUMMARY

### SELECTED ITEMS

Gold held steady as expectations for Fed rate cuts moderated, supported by strong US manufacturing data. Oil prices were stable, with WTI near \$63/bbl and Brent below \$68/bbl, as markets assessed Russian crude flows to India amid looming US tariffs. White House adviser Peter Navarro indicated US duties on Indian imports could double on 27 August, though Indian refiners have resumed purchases and Moscow expects flows to continue.

COMMODITY	LAST	CLOSE	% CHG	1D%	5D%	YTD%
Brent Crude	---	67.60	N/A	0.97	1.12	-9.66
Gold	---	3338.78	N/A	-0.29	0.10	27.22
Palladium	---	1115.14	N/A	-0.26	-2.92	25.51
Platinum	---	1356.65	N/A	1.02	-0.33	51.84
Silver	---	38.16	N/A	0.66	0.37	32.14

## BRENT CRUDE

One-year



## PLATINUM

One-year



## GOLD

One-year



## CURRENCY MARKET SUMMARY

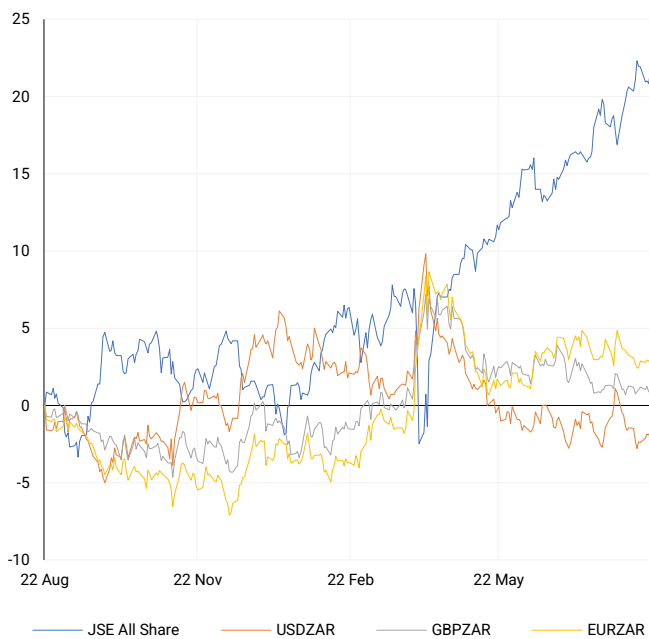
### SELECTED ITEMS

The rand weakened as investors awaited Powell's speech for interest rate guidance. The dollar strengthened following a softer-than-expected July jobs report and rising expectations of a September rate cut, while inflation risks from potential US trade tariffs under the Trump administration kept the currency under pressure.

CURRENCY PAIR	LAST	CLOSE	% CHG	1D%	5D%	YTD%
USDZAR	---	17.72	N/A	0.28	0.75	-5.93
GBPZAR	---	23.77	N/A	-0.02	-0.15	0.61
EURZAR	---	20.56	N/A	-0.12	0.35	5.26
AUDZAR	---	11.38	N/A	0.06	-0.44	-2.56
EURUSD	---	1.16	N/A	-0.39	-0.36	12.10
USDJPY	---	148.37	N/A	0.71	0.41	-5.65
GBPUSD	---	1.34	N/A	-0.31	-0.86	7.19
USDCHF	---	0.81	N/A	0.60	0.16	-10.88

## CURRENCY PAIRS vs JSE ALL SHARE

Normalised percentage performances



## USDZAR

One-year



## EURUSD

One-year



SOURCES | JSE, IRESS, MONEYWEB, CNBC, BBC, CNN

**Disclaimer:** This note is prepared for Sanlam Private Wealth (Pty) Ltd, by K2013143132 (Pty) Ltd trading as ThompsonGreen. ThompsonGreen is an independent company contracted to Sanlam Private Wealth (Pty) Ltd. The views expressed in this note are those of ThompsonGreen and/or its analysts and not necessarily the views of Sanlam Private Wealth (Pty) Ltd, Sanlam or any officer or agent thereof. K2013143132 (Pty) Ltd trading as ThompsonGreen is a research house and not a registered broker, financial adviser or financial service provider. Our editors and customer services teams also do not give personal investment advice. The information in this document is general advice only and may not be appropriate to your particular investment objectives, financial situation or particular needs. Before investing, or if you are in any doubt about your personal situation, you should seek professional advice from a stockbroker or independent financial adviser authorised by the Financial Sector Conduct Authority.