

GLOBAL OVERVIEW | SELECTED INDICES

SOUTH AFRICAN INDICES						
	CLOSE	PREVIOUS	1D%	5D%	1M%	YTD%
All Share	106111.00	105422.83	0.65	1.58	4.86	26.18
Top 40	98714.30	98038.47	0.69	1.73	5.44	30.95
Financial 15	21855.80	21971.31	-0.53	0.42	0.19	6.05
Industrial 25	141374.00	142263.07	-0.62	1.50	0.18	19.12
Resource 10	102889.00	99025.69	3.90	3.30	20.70	98.22
Mid Cap	102519.00	101731.49	0.77	1.63	3.53	14.64
Small Cap	99133.40	98530.91	0.61	1.11	3.20	6.16
Banks	13271.00	13361.19	-0.67	0.54	-0.17	4.80
Retailers	6674.52	6689.23	-0.22	1.48	1.22	-21.63
Property (J253) - TR	2742.16	2742.16	0.00	-0.35	0.57	14.09

AMERICAN INDICES						
	CLOSE	PREVIOUS	1D%	5D%	1M%	YTD%
Dow Jones	46315.27	46142.42	0.37	1.05	3.10	8.86
Nasdaq	22631.48	22470.72	0.72	2.21	6.18	17.20
S&P 500	6664.36	6631.96	0.49	1.22	3.95	13.31
US VIX	15.45	15.70	-1.59	4.67	-0.77	-10.95

EUROPEAN INDICES						
	CLOSE	PREVIOUS	1D%	5D%	1M%	YTD%
CAC 40	7853.59	7854.61	-0.01	0.36	-1.57	6.41
DAX 30	23639.41	23674.53	-0.15	-0.25	-3.21	18.74
Eurostoxx 50	5459.55	5455.20	0.08	1.27	-0.50	11.51
FTSE	9216.67	9228.11	-0.12	-0.72	0.30	12.77

ASIAN INDICES						
	CLOSE	PREVIOUS	1D%	5D%	1M%	YTD%
Hang Seng	26545.10	26544.85	0.00	0.59	5.66	32.33
Nikkei 225	45045.81	45303.43	-0.57	0.62	3.44	12.91
Shanghai	3820.09	3831.66	-0.30	-1.30	2.49	13.97

EARLY MORNING MARKETS						
	LAST	CLOSE	% CHG	1D%	5D%	YTD%
TENCENT	636.50	642.50	-0.93	0.08	-0.16	54.39
BHP AUS	3993	3964	0.73	-0.83	-2.87	3.74

NOTE: 5D% and 1M% are rolling percentage moves

INTERNATIONAL ECONOMIC CALENDAR | SELECTED EVENTS

TIME	AREA	TODAY'S EVENTS & RELEASES	PERIOD	EXP.	PREV.
16:00	EU	Consumer Confidence	--	-15	-16
20:00	UK	BOE Gov Bailey Speaks	--	--	--
--	--	--	--	--	--
--	--	--	--	--	--
--	--	--	--	--	--

TIME	AREA	PREVIOUS SESSION'S RELEASES	PERIOD	EXP.	ACT.
13:00	EU	German PPI m/m	--	-0.10%	-0.50%
13:00	UK	Retail Sales m/m	--	0.40%	0.50%
--	--	--	--	--	--
--	--	--	--	--	--
--	--	--	--	--	--

JSE ALL SHARE | BEST AND WORST ONE-DAY PERFORMERS

BEST ONE-DAY % PERFORMERS						
	CODE	CLOSE	1D%	5D%	YTD%	
RCL Foods Limited	RCL	1129	16.39	15.20	18.84	
Harmony GM Co Ltd	HAR	27922	7.99	5.79	85.31	
DRD Gold Ltd	DRD	4385	7.50	13.02	165.28	
Sibanye Stillwater Ltd	SSW	4067	6.80	6.38	171.50	
Gold Fields Ltd	GFI	69133	6.39	5.70	179.78	
Pan African Resource plc	PAN	1965	4.02	7.55	139.93	

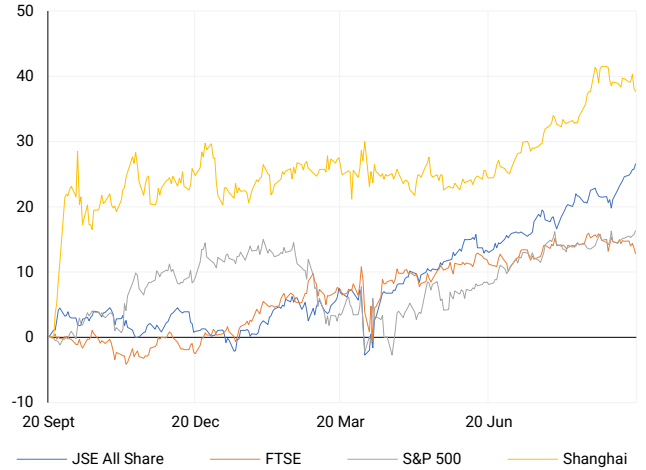
WORST ONE-DAY % PERFORMERS						
	CODE	CLOSE	1D%	5D%	YTD%	
Alexander Forbes Grp Hldgs	AFH	714	-4.80	-8.11	-12.39	
Sappi Ltd	SAP	2323	-4.17	-14.03	-52.84	
Investec Ltd	INL	13233	-3.77	-1.25	5.83	
Bytes Technology Grp PLC	BYI	9264	-3.35	-6.40	-5.77	
Investec plc	INP	13381	-2.90	-0.31	5.61	

DIVIDEND DATA

COMPANY	CODE	EXPECTED DIVIDEND
Bid Corporation	BID	600 ZARc
Cashbuild	CSB	300 ZARc
Clientèle	CLI	132 ZARc
Rainbow Chicken	RBO	20 ZARc
Shoprite	SHP	496 ZARc

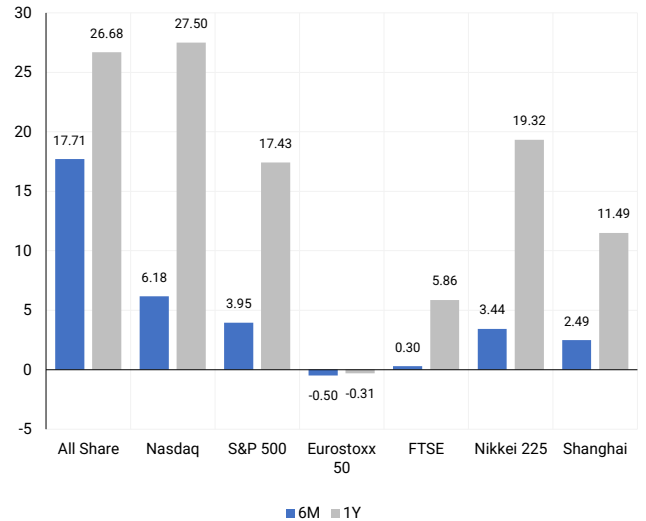
INTERNATIONAL INDICES

Normalised percentage performances - In rand terms



INTERNATIONAL INDICES

6-month & 1-year percentage performances



JSE ALL SHARE INDEX

2024 v 2025 to date



Last date to trade Mon, 22 September

LOCAL EQUITIES | JSE LARGE CAP COMPANIES (Cents Per Share)

COMPANY	CLOSE	PREVIOUS	1D%	5D%	1M%	YTD%
Absa Group Limited	18392	18572	-0.97	-0.41	-2.33	-3.07
Anglo American plc	59500	59567	-0.11	-1.75	16.42	7.82
Anglogold Ashanti Ltd	114900	111129	3.39	0.47	23.71	172.92
Anheuser-Busch InBev SA NV	103156	102451	0.69	1.13	-6.45	9.98
BHP Group Limited	45050	45373	-0.71	-3.96	-4.58	-2.15
BID Corporation Ltd	44851	44791	0.13	-0.32	-4.09	4.17
British American Tob plc	94433	95240	-0.85	-3.80	-6.59	39.58
Compagnie Fin Richemont	325808	329423	-1.10	0.47	9.70	17.37
Capitec Bank Hldgs Ltd	358714	361954	-0.90	1.21	-0.86	14.45
Discovery Ltd	19909	20116	-1.03	-4.82	-5.64	2.22
Firststrand Ltd	8099	8140	-0.50	-0.01	4.07	6.62
Gold Fields Ltd	69133	64982	6.39	5.70	31.20	179.78
Glencore plc	7307	7221	1.19	1.74	4.68	-12.51
Impala Platinum Hlgs Ltd	19430	19054	1.97	5.57	19.94	121.42
Kumba Iron Ore Ltd	32650	31804	2.66	1.62	10.30	0.08
Mondi plc	23400	23471	-0.30	-0.15	-8.57	-15.68
MTN Group Ltd	13800	14133	-2.36	0.79	-11.57	50.02
Naspers Ltd -N-	607000	612327	-0.87	3.35	4.89	45.45
Prosus N.V.	115900	115683	0.19	4.13	6.86	54.73
South32 Limited	3050	2936	3.88	2.49	-8.98	-23.52
Standard Bank Group Ltd	24406	24320	0.35	1.98	-2.44	10.06
Shoprite Holdings Ltd	28535	28764	-0.80	-1.16	5.58	-3.11
Sanlam Limited	8610	8690	-0.92	-0.08	-1.46	-0.90
Sasol Limited	11716	11680	0.31	-5.52	10.65	40.70
Sibanye Stillwater Ltd	4067	3808	6.80	6.38	15.05	171.50
Valterra	104112	102044	2.03	7.59	25.04	82.99
Vodacom Group Ltd	13274	13439	-1.23	-0.61	-5.91	30.96

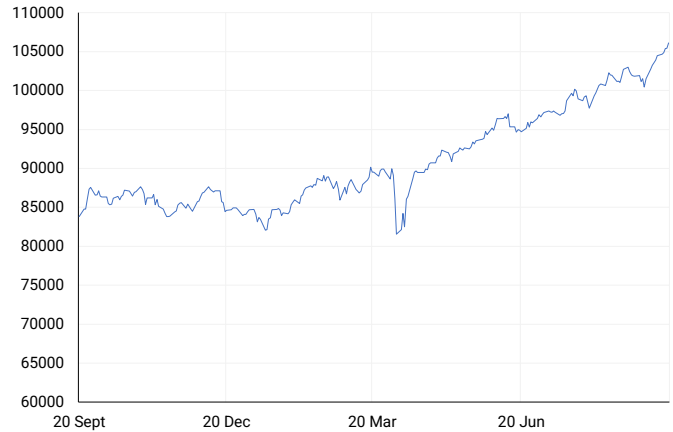
SOUTH AFRICAN MARKET SUMMARY

SELECTED ITEMS

Trade Minister Parks Tau met with U.S. Trade Representative Jamieson Greer to discuss rolling back the 30% tariffs imposed last month on South African imports. These tariffs, the highest in Sub-Saharan Africa, threaten tens of thousands of jobs amid sluggish economic growth and unemployment above 30%. The talks followed intense three-day negotiations. Meanwhile, South Africa's Democratic Alliance named Helen Zille as its mayoral candidate for Johannesburg, aiming to retake control of the country's largest city in next year's local elections.

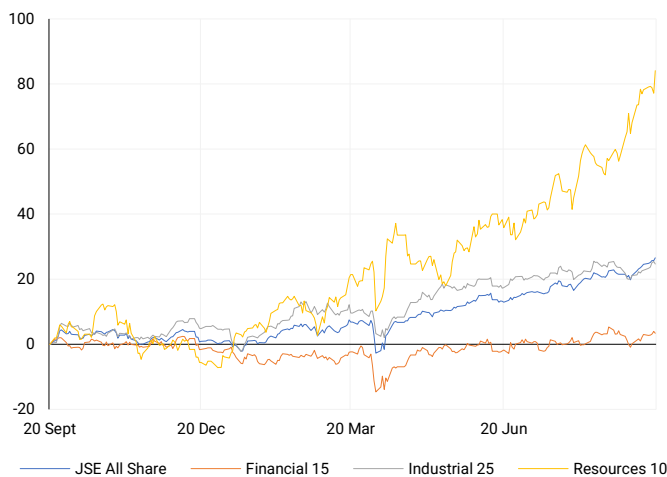
JSE ALL SHARE

One-year



LOCAL INDICES

Normalised percentage performances



LOCAL SENS ANNOUNCEMENTS

SELECTED RELEASE

Investec Group – Stable Earnings Amid Challenging Conditions

Investec Group's 1H2026 pre-close update shows stable earnings in line with the prior period despite tough macroeconomic headwinds. Adjusted EPS is expected between 38.7p and 41.5p, supported by a cost-to-income ratio of 52-54% and strong credit quality. Southern African operations remain resilient with a return on equity (ROE) around 18.5%, while UK business returns stay within target despite higher credit loss provisions. The Group continues share buybacks and strategic investments to drive growth. Overall ROE is forecast between 13-14%, underpinning long-term capital generation and medium-term return goals.

INL | -3.77% | Open : 13650 | High : 13690 | Low : 13233 | Close : 13233

Mustek – Earnings Resilience Despite Revenue Decline

Mustek reported FY2025 revenue of R7.2 billion, down 14.9% year-on-year due to market pressures. However, gross profit margin improved to 13.3% from 12.2%. Headline earnings per share rose 8.3% to 72.73 cents, while basic EPS surged 92.2% to 71.71 cents, reflecting operational efficiencies. The Board declared a dividend of 13.75 cents per share, an 83.3% increase. Net asset value per share rose modestly by 2.4% to 2,869.71 cents. Prior year figures were restated to correct revenue classification errors without affecting profit.

MST | +1.78% | Open : 1350 | High : 1374 | Low : 1350 | Close : 1374

Safari Investments – Solid Operating Profit and Property Value Growth

Safari reported an operating profit of R333.5 million for FY2025, down from R381.7 million over the previous 15-month period. The fair value of investment properties increased by 3.74% to R4.19 billion, excluding the Platz Am Meer asset sold in June 2025. The Group's SA REIT loan-to-value ratio improved to 31.5%, with net asset value per share rising to R11.47. Earnings per share were 217 cents, with headline EPS at 74 cents. A final dividend of 40 cents per share brings total FY2025 distributions to 74 cents, maintaining a 100% payout ratio.

SAR | +4.90% | Open : 750 | High : 750 | Low : 750 | Close : 750

EXPECTED COMPANY REPORTING SCHEDULE

COMPANY	CODE	RELEASE	DATE
Remgro	REM	Final	Tue, 23 Sept
Grand Parade Investments	GPL	Final	Tue, 23 Sept
Texton Property Fund	TEX	Final	Tue, 23 Sept
Remgro	REM	Final	Tue, 23 Sept
Grand Parade Investments	GPL	Final	Tue, 23 Sept

BANK AND OTHER SELECTED PREFERENCE SHARES

COMPANY	CODE	CLOSE	CLEAN YIELD	NEXT LDT (Est.)
Investec Limited	INPR	9550	9.67	Tue, 10 Jun '25
Standard Bank	SBPP	9305	9.62	Wed, 03 Sept '25
Capitec	CPIP	10823	8.86	Wed, 17 Sept '25
Grindrod	GNDP	9620	10.68	Wed, 17 Sept '25
Netcare	NTCP	9250	10.30	Wed, 12 Nov '25
Discovery	DSBP	11799	9.81	Wed, 17 Sept '25

LOCAL EQUITIES | JSE MID CAP COMPANIES (Cents Per Share)

COMPANY	CODE	CLOSE	PREVIOUS	1D%	1M%	YTD%
Aspen Pharmacare Hldgs Ltd	APN	10187	10117	0.69	-9.36	-38.20
African Rainbow Min Ltd	ARI	17107	16646	2.77	-4.24	13.75
AVI Ltd	AVI	10217	10198	0.19	9.24	-6.88
Barloworld Ltd	BAW	11895	11994	-0.83	0.81	9.60
Bidvest Ltd	BVT	22006	21821	0.85	-8.76	-16.54
Boxer	BOX	6873	6790	1.22	1.33	6.72
Bytes Technology Grp PLC	BYI	9264	9585	-3.35	-0.92	-5.77
Capital&Counties Prop plc	CCO	3340	3300	1.21	-7.22	6.81
Clicks Group Ltd	CLS	36417	36534	-0.32	-3.39	-2.39
Dis-Chem Pharmacies Ltd	DCP	3464	3429	1.02	0.12	-4.04
Exxaro Resources Ltd	EXX	18465	18057	2.26	11.58	16.90
Fortress Real Est INV B	FFB	2327	2284	1.88	3.88	14.86
Growthpoint Prop Ltd	GRT	1496	1510	-0.93	1.49	17.52
Harmony GM Co Ltd	HAR	27922	25856	7.99	4.09	85.31
Hammerson plc	HMN	6901	6839	0.91	-0.42	3.46
Investec Ltd	INL	13233	13752	-3.77	3.63	5.83
Investec plc	INP	13381	13780	-2.90	5.81	5.61
Italtile Ltd	ITE	960	970	-1.03	-3.90	-32.11
Life Healthc Grp Hldgs Ltd	LHC	1134	1130	0.35	-18.59	-30.77
MultiChoice Group Ltd	MCG	12399	12400	-0.01	2.06	14.81
Montauk Renewables Inc	MKR	4000	3851	3.87	9.89	-51.81
Mr Price Group Ltd	MRP	21477	21741	-1.21	0.79	-27.26
Momentum Met Hldgs Ltd	MTM	3383	3377	0.18	-5.87	11.80
Ninety One Plc	N91	4730	4723	0.15	4.76	37.58
Nedbank Group Ltd	NED	21426	21722	-1.36	-7.51	-23.94
Northam Platinum Hldgs Ltd	NPH	23835	23297	2.31	19.38	144.69
NEPI Rockcastle N.V.	NRP	14037	13812	1.63	-2.25	1.72
Netcare Limited	NTC	1396	1389	0.50	0.36	-6.43
Ninety One Limited	NY1	4762	4630	2.85	7.86	37.47
Old Mutual Limited	OMU	1366	1365	0.07	7.22	9.19
OUTsurance Group Ltd	OUT	7929	7840	1.14	6.29	19.23
Pick n Pay Stores Ltd	PIK	2618	2605	0.50	-3.96	-14.72
Pepkor Holdings Ltd	PPH	2580	2585	-0.19	0.16	-10.88
Quilter Plc	QLT	3872	3931	-1.50	-2.07	8.89
Redefine Properties Ltd	RDF	508	505	0.59	2.42	11.65
Remgro Ltd	REM	17626	17750	-0.70	4.92	13.64
Resilient REIT Limited	RES	6617	6573	0.67	0.26	12.61
Reinet Investments S.C.A	RNI	52259	52560	-0.57	-0.24	16.87
Sappi Ltd	SAP	2323	2424	-4.17	-17.83	-52.84
Santam Limited	SNT	40010	40400	-0.97	-8.82	1.90
The Spar Group Ltd	SPP	10111	10189	-0.77	-7.39	-30.79
Sirius Real Estate Ltd	SRE	2293	2314	-0.91	-4.85	24.62
Tiger Brands Ltd	TBS	30975	31577	-1.91	-1.62	7.17
Transaction Capital Ltd	TCP	103	103	0.00	-24.82	-57.79
The Foschini Group Limited	TFG	11303	11312	-0.08	2.75	-32.72
Thungela Resources Ltd	TGA	8571	8588	-0.20	1.79	-35.89
Telkom SA SOC Ltd	TKG	5227	5195	0.62	-4.09	49.47
Truworths Int Ltd	TRU	5824	5823	0.02	-11.84	-43.79
Woolworths Holdings Ltd	WHL	5417	5361	1.04	4.56	-13.12
Zeda Limited	ZZD	1285	1275	0.78	-1.15	-3.38

LOCAL EQUITIES | JSE SMALL CAP COMPANIES (Cents Per Share)

COMPANY	CODE	CLOSE	PREVIOUS	1D%	1M%	YTD%
ArcelorMittal SA Limited	ACL	127	128	-0.78	36.56	-5.22
ADvTECH Ltd	ADH	3216	3164	1.64	-1.29	-4.96
Altron Limited A	AEL	1838	1807	1.72	-13.26	-13.51
AECI Limited	AFE	10317	10435	-1.13	-4.26	18.02
Alexander Forbes Grp Hldgs	AFH	714	750	-4.80	-15.90	-12.39
Afrimat Limited	AFT	3857	3801	1.47	-7.08	-45.64
Adcock Ingram Hldgs Ltd	AIP	7190	7180	0.14	1.63	7.31
Astral Foods Ltd	ARL	20916	20501	2.02	11.00	11.85
Attacq Limited	ATT	1405	1428	-1.61	-3.64	1.30
Brait PLC	BAT	208	210	-0.95	-5.45	0.48
Blue Label Telecoms Ltd	BLU	1306	1280	2.03	-20.70	123.63
Burstone Group	BTN	856	845	1.30	5.03	-8.94
Coronation Fund Mngrs Ld	CML	4506	4535	-0.64	5.13	15.07
Curro Holdings Limited	COH	1230	1204	2.16	43.19	-5.75
Cashbuild Ltd	CSB	14706	14200	3.56	-5.12	-30.50
DRD Gold Ltd	DRD	4385	4079	7.50	68.01	165.28
Datec Ltd	DTC	6065	6058	0.12	2.59	21.62
Emira Property Fund Ltd	EMI	1194	1224	-2.45	1.62	9.54
Equites Prop Fund Ltd	EQU	1710	1700	0.59	2.27	16.33
Famous Brands Ltd	FBR	5534	5500	0.62	-6.68	-19.80
Fairvest Limited B	FTB	551	553	-0.36	-1.96	15.51
Grindrod Ltd	GND	1500	1523	-1.51	21.65	25.42
Hosken Cons Inv Ltd	HCI	11885	12100	-1.78	-5.50	-27.53
Hudaco Industries Ltd	HDC	17820	18300	-2.62	-2.94	-17.50
Hyprop Inv Ltd	HYP	4814	4790	0.50	3.59	3.59
JSE Ltd	JSE	13005	13053	-0.37	-1.15	7.73
KAP Industrial Hldgs Ltd	KAP	160	155	3.23	-9.09	-47.88
Karoo Ltd	KRO	99979	98900	1.09	16.69	14.92
PSG Konsult Limited	KST	2331	2332	-0.04	1.35	18.81
Libstar Holdings Ltd	LBR	440	440	0.00	34.15	1.15
Lighthouse Properties plc	LTE	798	793	0.63	-5.00	-0.62
Industrials REIT Limited	MLI	39.5	39	1.28	1.28	51.92
MAS P.L.C	MSP	2115	2110	0.24	-18.18	-9.23
Metair Investments Ltd	MTA	690	676	2.07	7.81	-29.95
Motus Holdings Ltd	MTH	10738	10980	-2.20	12.97	-11.63
Murray & Roberts Hldgs	MUR	110	110	0.00	0.00	0.00
Oceana Group Ltd	OCE	5251	5307	-1.06	1.80	-22.18
Omnia Holdings Ltd	OMN	7341	7305	0.49	-3.29	-6.01
Pan African Resource plc	PAN	1965	1889	4.02	35.42	139.93
PPC Limited	PPC	498	505	-1.39	-4.60	-3.30
Raubex Group Ltd	RBX	4251	4257	-0.14	-8.01	-19.79
RFG Holdings Limited	RFG	1695	1641	3.29	10.06	-18.08
Reunert Ltd	RLO	5593	5598	-0.09	0.39	-25.43
SA Corp Real Estate Ltd	SAC	308	310	-0.65	-1.60	5.48
Super Group Ltd	SPG	1332	1356	-1.77	-5.26	-54.85
Stor-Age Prop REIT Ltd	SSS	1636	1639	-0.18	-0.55	5.01
Southern Sun LTD	SSU	900	917	-1.85	0.33	-0.88
Sun International Ltd	SUI	4380	4469	-1.99	-7.01	0.69
Tharisa plc	THA	2225	2210	0.68	4.66	37.18
Tsogo Sun Gaming Ltd	TSG	680	690	-1.45	0.74	-33.33
Vukile Property Fund Ltd	VKE	2149	2151	-0.09	2.63	19.59
Wilson Bayly Hlm-Ovc Ltd	WBO	15317	15530	-1.37	-10.95	-34.34

10-YEAR BOND YIELD | SELECTED ITEMS (Basis Point Change)

REGION	YIELD	1D	1M	1Y
United States	4.14%	3	-19	40
United Kingdom	4.71%	4	-1	81
Germany	2.74%	2	-1	54
Japan	1.64%	5	4	81
South African 10Y	9.16%	-2	-43	28

GLOBAL INTEREST RATES | SELECTED ITEMS

REGION	DATE CHANGED	CURRENT RATE
United States	Sep '25	4.25-4.50%
United Kingdom	Aug '24	4.00%
European	Jun '25	2.15%
SA Repo Rate	Jul '25	7.00%
SA Prime Rate	Jul '25	10.50%

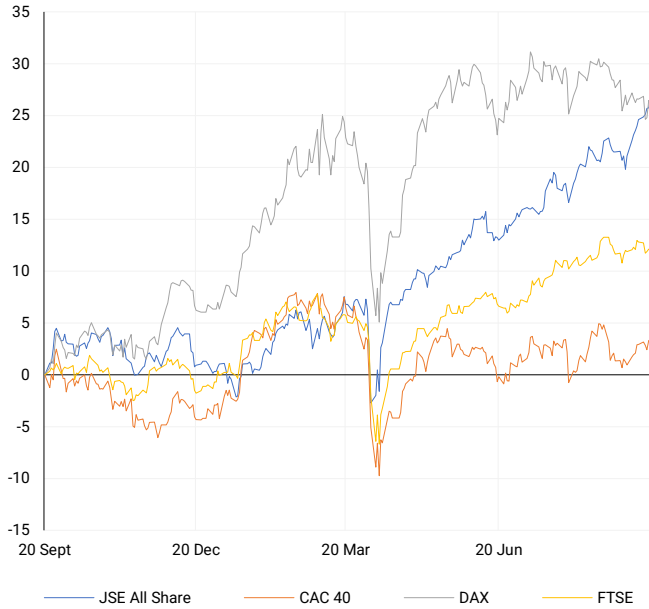
SOUTH AFRICAN 10-YEAR

2024 vs 2025 to date



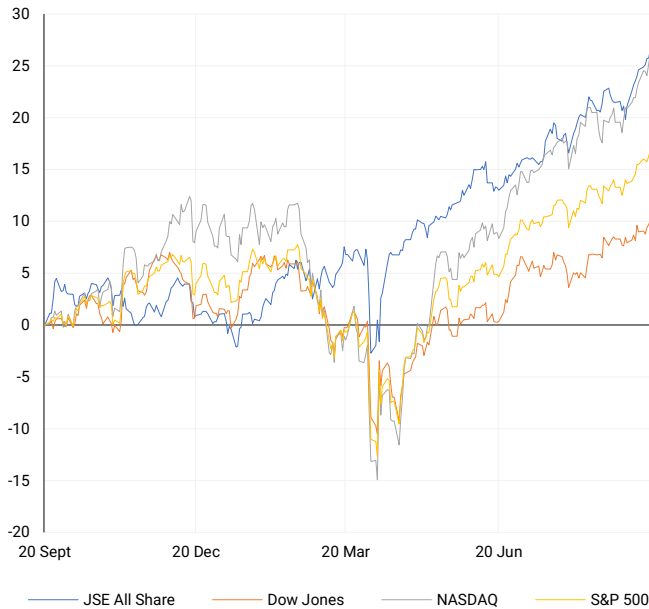
EUROPEAN INDICES

Normalised percentage performances



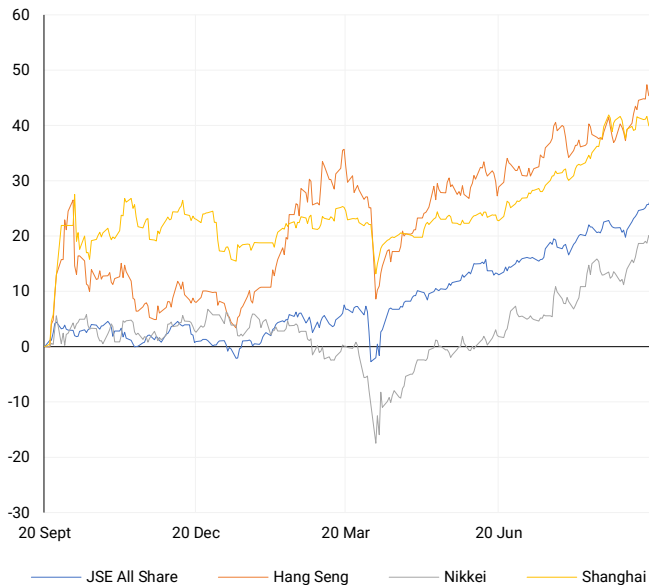
AMERICAN INDICES

Normalised percentage performances



ASIAN INDICES

Normalised percentage performances

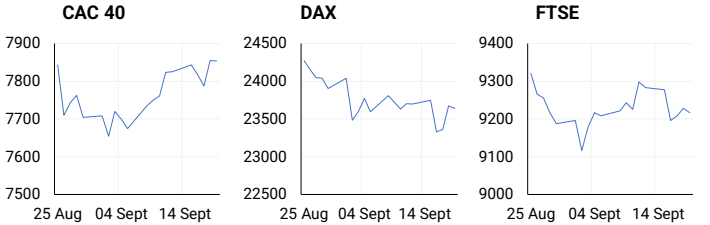


EUROPEAN MARKET SUMMARY

SELECTED ITEMS

European shares closed mostly flat, with the STOXX 600 dipping just 0.04%. Banks led gains, recovering 1.26% after earlier losses, while defense stocks remained near record highs. Fitch is expected to upgrade Italy's credit rating, reflecting political stability and improved public finances. Spain's National Statistics Institute revised its 2024 GDP growth forecast up to 3.5%. Shipping giants Maersk and Hapag-Lloyd saw sharp declines amid concerns over falling container freight rates and weakening U.S. port volumes.

EUROPEAN INDICES	CLOSE	PREVIOUS	1D%	5D%	1M%	YTD%
CAC 40	7853.59	7854.61	-0.01	0.36	-1.57	6.41
DAX 30	23639.41	23674.53	-0.15	-0.25	-3.21	18.74
Eurostoxx 50	5459.55	5455.20	0.08	1.27	-0.50	11.51
FTSE	9216.67	9228.11	-0.12	-0.72	0.30	12.77



AMERICAN MARKET SUMMARY

SELECTED ITEMS

Wall Street's main indexes hit record closing highs for the second day, helped by the Federal Reserve's recent rate cut and signals of more easing ahead. The S&P 500 and Nasdaq notched their third straight week of gains, with trading volume reaching 27.78 billion shares, the highest since April. FedEx shares jumped 2.3% following strong quarterly results, driven by domestic deliveries and cost-cutting. Apple surged 3.2% on an upgraded price target, boosting the tech sector overall.

AMERICAN INDICES	CLOSE	PREVIOUS	1D%	5D%	1M%	YTD%
Dow Jones	46315.27	46142.42	0.37	1.05	3.10	8.86
Nasdaq	22631.48	22470.72	0.72	2.21	6.18	17.20
S&P 500	6664.36	6631.96	0.49	1.22	3.95	13.31
US VIX	15.45	15.70	-1.59	4.67	-0.77	-10.95



ASIAN MARKET SUMMARY

SELECTED ITEMS

Asia-Pacific markets mostly rose, following gains in U.S. equities. China's central bank held lending rates steady for the fourth month, keeping the one-year LPR at 3.0% and the five-year at 3.5%. South Korea's President Lee warned of a potential crisis if U.S. trade demands continue without safeguards. India's Prime Minister Modi urged citizens to support local products amid tense U.S. relations. Australia's central bank expects recent rate cuts to support spending but remains cautious due to global uncertainties.

ASIAN INDICES	CLOSE	PREVIOUS	1D%	5D%	1M%	YTD%
Hang Seng	26545.10	26544.85	0.00	0.59	5.66	32.33
Nikkei 225	45045.81	45303.43	-0.57	0.62	3.44	12.91
Shanghai	3820.09	3831.66	-0.30	-1.30	2.49	13.97



COMMODITIES MARKET SUMMARY

SELECTED ITEMS

Valterra Platinum's CEO predicted a possible 20% drop in global platinum group metals production by 2030, deepening supply shortages amid steady demand from automakers. Gold hovered near record highs ahead of key Federal Reserve speeches and inflation data this week. Oil prices edged up, supported by geopolitical tensions in Europe and the Middle East, despite rising Iraqi exports and eased OPEC+ production cuts. Markets remain cautious about the potential impact of tariffs on global fuel demand.

COMMODITY	LAST	CLOSE	% CHG	1D%	5D%	YTD%
Brent Crude	---	66.64	N/A	-1.27	-0.36	-10.94
Gold	---	3685.01	N/A	1.11	1.15	40.41
Palladium	---	1158.80	N/A	-0.25	-3.52	30.42
Platinum	---	1409.15	N/A	1.65	1.05	57.71
Silver	---	43.06	N/A	2.98	2.05	49.09

BRENT CRUDE

One-year



PLATINUM

One-year



GOLD

One-year



CURRENCY MARKET SUMMARY

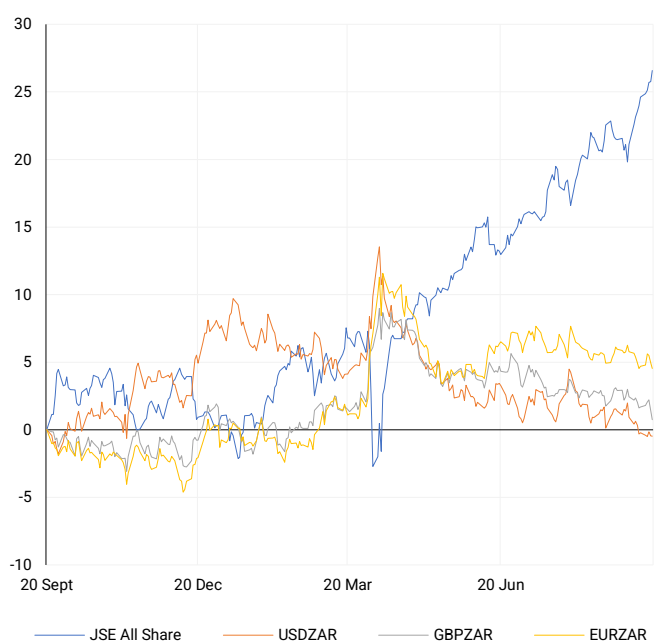
SELECTED ITEMS

The South African rand traded flat following the Reserve Bank's decision to hold interest rates steady and ongoing talks to roll back U.S. tariffs. Meanwhile, the U.S. dollar remained steady as investors awaited multiple Federal Reserve officials' speeches this week. These will offer further clues on interest rate policy after last week's rate cut and easing signals. Market participants are focused on how central bank communications might influence future monetary decisions.

CURRENCY PAIR	LAST	CLOSE	% CHG	1D%	5D%	YTD%
USDZAR	---	17.35	N/A	-0.02	-0.24	-7.93
GBPZAR	---	23.36	N/A	-0.66	-0.92	-1.14
EURZAR	---	20.37	N/A	-0.38	-0.15	4.28
AUDZAR	---	11.44	N/A	-0.30	-1.10	-2.04
EURUSD	---	1.17	N/A	-0.36	0.10	13.44
USDJPY	---	147.97	N/A	-0.01	0.21	-5.90
GBPUSD	---	1.35	N/A	-0.65	-0.66	7.61
USDCHF	---	0.80	N/A	0.38	-0.13	-12.33

CURRENCY PAIRS vs JSE ALL SHARE

Normalised percentage performances



USDZAR

One-year



EURUSD

One-year



SOURCES | JSE, IRESS, MONEYWEB, CNBC, BBC, CNN

Disclaimer: This note is prepared for Sanlam Private Wealth (Pty) Ltd, by K2013143132 (Pty) Ltd trading as ThompsonGreen. ThompsonGreen is an independent company contracted to Sanlam Private Wealth (Pty) Ltd. The views expressed in this note are those of ThompsonGreen and/or its analysts and not necessarily the views of Sanlam Private Wealth (Pty) Ltd, Sanlam or any officer or agent thereof. K2013143132 (Pty) Ltd trading as ThompsonGreen is a research house and not a registered broker, financial adviser or financial service provider. Our editors and customer services teams also do not give personal investment advice. The information in this document is general advice only and may not be appropriate to your particular investment objectives, financial situation or particular needs. Before investing, or if you are in any doubt about your personal situation, you should seek professional advice from a stockbroker or independent financial adviser authorised by the Financial Sector Conduct Authority.