

GLOBAL OVERVIEW | SELECTED INDICES

SOUTH AFRICAN INDICES						
	CLOSE	PREVIOUS	1D%	5D%	1M%	YTD%
All Share	107940.48	107243.58	0.65	1.17	5.99	28.36
Top 40	100951.43	100292.31	0.66	1.48	7.18	33.92
Financial 15	21174.92	21136.91	0.18	-2.41	-2.75	2.75
Industrial 25	142114.58	140879.70	0.88	2.15	1.34	19.74
Resource 10	112441.63	111489.14	0.85	3.76	27.40	116.62
Mid Cap	103164.30	102788.43	0.37	0.29	3.88	15.36
Small Cap	97294.81	97152.55	0.15	-0.93	0.45	4.19
Banks	12859.66	12850.60	0.07	-2.57	-1.58	1.55
Retailers	6314.48	6314.07	0.01	-3.16	-3.15	-25.85
Property (J253) - TR	2698.99	2684.51	0.54	-1.91	-0.96	12.30

AMERICAN INDICES						
	CLOSE	PREVIOUS	1D%	5D%	1M%	YTD%
Dow Jones	46397.89	46316.07	0.18	0.23	1.87	9.06
Nasdaq	22660.01	22591.15	0.30	0.38	5.61	17.34
S&P 500	6688.46	6661.21	0.41	0.47	3.53	13.72
US VIX	16.28	16.12	0.99	-2.16	5.99	-6.17

EUROPEAN INDICES						
	CLOSE	PREVIOUS	1D%	5D%	1M%	YTD%
CAC 40	7895.94	7880.87	0.19	0.30	2.49	6.98
DAX 30	23880.72	23745.06	0.57	1.14	-0.09	19.95
Eurostoxx 50	5524.70	5520.40	0.08	0.82	3.22	12.84
FTSE	9350.43	9299.84	0.54	1.38	1.78	14.41

ASIAN INDICES						
	CLOSE	PREVIOUS	1D%	5D%	1M%	YTD%
Hang Seng	26855.56	26622.88	0.87	2.66	7.09	33.88
Nikkei 225	44932.63	45043.75	-0.25	-1.23	5.18	12.63
Shanghai	3882.78	3862.53	0.52	1.59	0.64	15.84

EARLY MORNING MARKETS						
	LAST	CLOSE	% CHG	1D%	5D%	YTD%
TENCENT	658.00	648.50	1.46	2.05	1.01	55.83
BHP AUS	4148	4024	3.08	0.05	0.68	5.31

NOTE: 5D% and 1M% are rolling percentage moves

INTERNATIONAL ECONOMIC CALENDAR | SELECTED EVENTS

TIME	AREA	TODAY'S EVENTS & RELEASES	PERIOD	EXP.	PREV.
11:00	SA	Total New Vehicle Sales	--	48.7	49.5
11:00	SA	ABSA Manufacturing PMI	--	52k	51.9k
--	--	--	--	--	--
--	--	--	--	--	--
--	--	--	--	--	--

TIME	AREA	PREVIOUS SESSION'S RELEASES	PERIOD	EXP.	ACT.
08:00	SA	M3 Money Supply YoY	--	--	6.18%
08:00	SA	Private Sector Credit YoY	--	6.00%	5.86%
11:30	SA	Budget Balance	--	-R45b	-R38.35b
14:00	SA	Balance of Trade	--	R17.8b	R3.97b
--	--	--	--	--	--

JSE ALL SHARE | BEST AND WORST ONE-DAY PERFORMERS

BEST ONE-DAY % PERFORMERS						
	CODE	CLOSE	1D%	5D%	YTD%	
MTN Group Ltd	MTN	14500	5.07	5.19	57.63	
Brait PLC	BAT	213	4.41	3.90	2.90	
Transaction Capital Ltd	TCP	100	4.17	8.70	-59.02	
Alexander Forbes Grp Hldgs	AFH	769	4.06	11.45	-5.64	
Karoo000 Ltd	KRO	100800	3.92	2.20	15.86	
Tharisa plc	THA	2420	3.91	9.75	49.20	

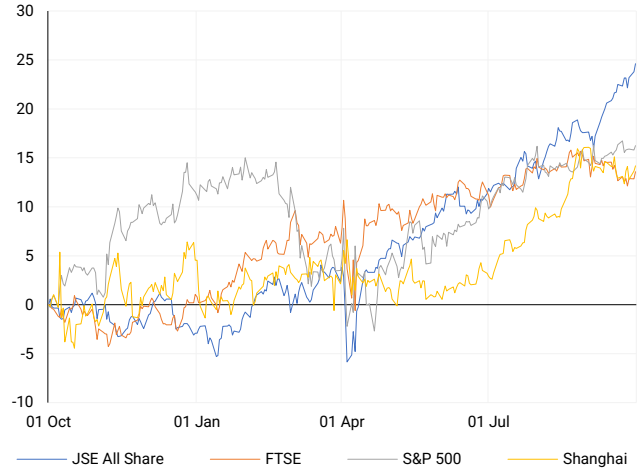
WORST ONE-DAY % PERFORMERS						
	CODE	CLOSE	1D%	5D%	YTD%	
Montauk Renewables Inc	MKR	3461	-8.92	-3.70	-58.30	
KAP Limited	KAP	165	-4.62	5.10	-46.25	
Oceana Group Ltd	OCE	4950	-3.88	-2.92	-26.64	
PPC Limited	PPC	540	-2.70	3.25	4.85	
Metair Investments Ltd	MTA	677	-2.59	-1.74	-31.27	

DIVIDEND DATA

COMPANY	CODE	EXPECTED DIVIDEND
Putprop	PPR	8.5 ZARc
Old Mutual	OMU	37 ZARc
Motus Holdings	MTH	310 ZARc
Aspen Pharmacare	APN	211 ZARc
Exxaro Resources	EXX	843 ZARc

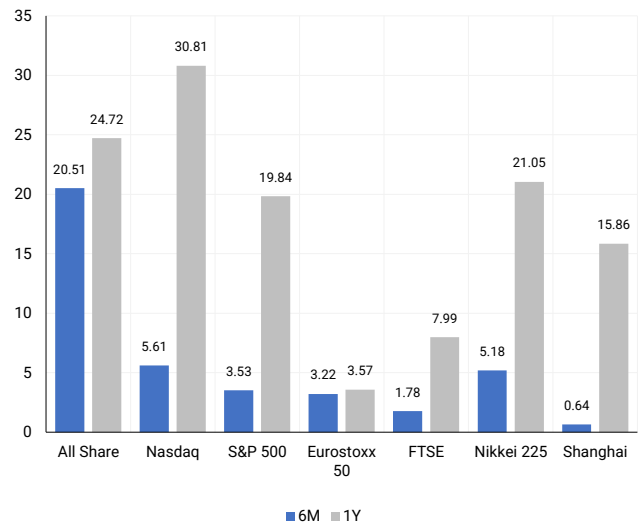
INTERNATIONAL INDICES

Normalised percentage performances - In rand terms



INTERNATIONAL INDICES

6-month & 1-year percentage performances



JSE ALL SHARE INDEX

2024 v 2025 to date



Ex Div Wed, 01 October

LOCAL EQUITIES | JSE LARGE CAP COMPANIES (Cents Per Share)

COMPANY	CLOSE	PREVIOUS	1D%	5D%	1M%	YTD%
Absa Group Limited	18109	18014	0.53	-1.40	-4.08	-4.56
Anglo American plc	64650	63929	1.13	8.68	19.17	17.15
Anglogold Ashanti Ltd	121353	118082	2.77	1.91	23.20	188.25
Anheuser-Busch InBev SA NV	102670	103589	-0.89	1.06	-7.50	9.46
BHP Group Limited	47663	48795	-2.32	3.59	-3.48	3.53
BID Corporation Ltd	43225	43000	0.52	0.52	-6.29	0.39
British American Tob plc	91218	90656	0.62	0.17	-8.55	34.82
Compagnie Fin Richemont	326926	327450	-0.16	-1.33	5.26	17.77
Capitec Bank Hldgs Ltd	347400	348719	-0.38	-3.92	-2.65	10.84
Discovery Ltd	19700	19483	1.11	0.46	-9.22	1.14
Firststrand Ltd	7766	7771	-0.06	-3.24	4.37	2.24
Gold Fields Ltd	72909	71484	1.99	0.53	25.77	195.06
Glencore plc	7970	7983	-0.16	5.51	14.17	-4.57
Impala Platinum Hlgs Ltd	22055	21906	0.68	7.43	38.31	151.34
Kumba Iron Ore Ltd	32485	32209	0.86	-0.66	0.42	-0.43
Mondi plc	23562	23675	-0.48	-0.59	-5.59	-15.09
MTN Group Ltd	14500	13800	5.07	5.19	-3.20	57.63
Naspers Ltd -N-	625468	618949	1.05	5.34	7.68	49.88
Prosus N.V.	121071	120837	0.19	4.48	10.85	61.63
South32 Limited	3112	3059	1.73	5.21	-0.22	-21.97
Standard Bank Group Ltd	23639	23529	0.47	-1.81	-5.01	6.60
Shoprite Holdings Ltd	27401	27700	-1.08	-1.82	4.21	-6.96
Sanlam Limited	8359	8297	0.75	-1.10	-8.34	-3.79
Sasol Limited	10746	10886	-1.29	0.42	-9.86	29.05
Sibanye Stillwater Ltd	4929	4957	-0.56	7.90	47.84	229.04
Valterra	123537	125838	-1.83	8.85	52.90	117.13
Vodacom Group Ltd	13329	13176	1.16	0.65	-6.25	31.50

SOUTH AFRICAN MARKET SUMMARY

SELECTED ITEMS

The Top 40 index rose 0.66% to 100,951.4 points, with the All Share index up 0.65% to 107,940.5. August's M3 money supply growth slowed to 6.18%, while credit growth slightly increased to 5.86%, beating forecasts. Foreign direct investment saw a sharp outflow of R73.5 billion in Q2 2025 versus earlier inflows. Formal sector employment declined, and a R38.35 billion budget deficit deepened fiscal concerns. Progress on reforms may help South Africa exit the FATF grey list, while SARB warns of rising debt-service costs and supports fiscal borrowing controls.

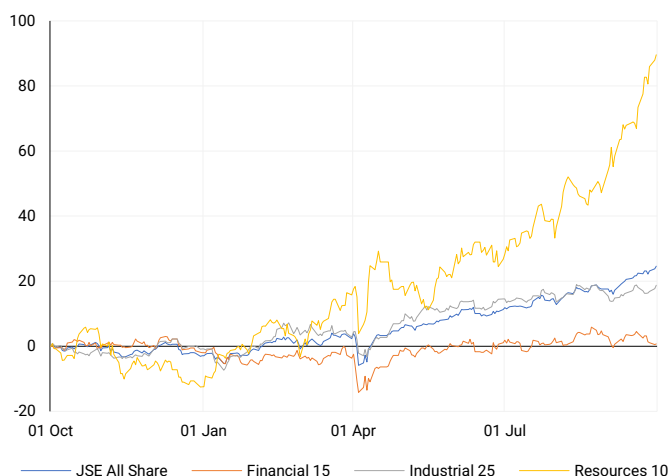
JSE ALL SHARE

One-year



LOCAL INDICES

Normalised percentage performances



LOCAL SENS ANNOUNCEMENTS

SELECTED RELEASE

Netcare – Strong FY25 Growth Outlook

Netcare expects FY2025 revenue growth of 4.5%–4.7%, with EBITDA rising 6.5%–8.5% and operating profit up 8.5%–11.5%. Adjusted HEPS is forecast to grow 16%–19%, supported by operational efficiency, digitisation benefits, and cost reductions. Hospital revenue should increase 4.8%–5.0% despite Pretoria East Hospital disruptions. Mental health demand remains strong, though Primary Care revenue fell due to a contract loss. The company returned R854 million in share buybacks and remains focused on digital and patient-centred care strategies.

NTC | +3.73% | Open : 1377 | High : 1449 | Low : 1368 | Close : 1420

Assura plc - Solid Rent Growth & Portfolio Expansion

Assura posted strong H1 FY2026 results with a 5.6% like-for-like rent rise and £12 million portfolio valuation uplift. The 602-property portfolio now delivers £179.5 million annual rent with a 12.3-year WAULT. Development projects worth £75 million are ongoing, alongside a £250 million pipeline. Asset upgrades and rooftop solar initiatives enhance earnings growth. Following PHP's offer, Assura confirmed LSE and JSE delistings expected in October. The company is well-positioned to deliver long-term, index-linked income and sustainable value.

AHR | -1.30% | Open : 1062 | High : 1065 | Low : 1062 | Close : 1065

Regeren - Merger Progress & New Drilling Targets

Regeren progressed its merger with ASP Isotopes, meeting all scheme conditions with a deadline extended to November 28, 2025. A legal settlement with Springbok Solar cleared the way for joint operation of Virginia Gas and Springbok Solar projects. LNG production dropped to 987 tonnes due to maintenance, while helium operations paused to reduce costs. Geological analysis identified 13 new drilling targets, supported by a R36.1 million exploration investment, reflecting ongoing growth and strategic resource development.

REN | -3.73% | Open : 1579 | High : 1600 | Low : 1490 | Close : 1521

EXPECTED COMPANY REPORTING SCHEDULE

COMPANY	CODE	RELEASE	DATE
Capitec Bank	CPI	Final	Wed, 01 Oct
Jubilee Metals Group	JBL	Final	Wed, 01 Oct
TeleMasters	TLM	Final	Fri, 03 Oct
Capitec Bank	CPI	Final	Wed, 01 Oct
Jubilee Metals Group	JBL	Final	Wed, 01 Oct

BANK AND OTHER SELECTED PREFERENCE SHARES

COMPANY	CODE	CLOSE	CLEAN YIELD	NEXT LDT (Est.)
Investec Limited	INPR	9849	9.38	Tue, 10 Jun '25
Standard Bank	SBPP	9468	9.46	Wed, 03 Sept '25
Capitec	CPIP	10823	8.88	Wed, 17 Sept '25
Grindrod	GNDP	9700	10.62	Wed, 17 Sept '25
Netcare	NTCP	9499	10.04	Wed, 12 Nov '25
Discovery	DSBP	11200	10.39	Wed, 17 Sept '25

LOCAL EQUITIES | JSE MID CAP COMPANIES (Cents Per Share)

COMPANY	CODE	CLOSE	PREVIOUS	1D%	1M%	YTD%
Aspen Pharmicare Hldgs Ltd	APN	9688	9530	1.66	-8.49	-41.23
African Rainbow Min Ltd	ARI	18551	18570	-0.10	2.05	23.35
AVI Ltd	AVI	9892	9858	0.34	5.79	-9.84
Barloworld Ltd	BAW	11800	11817	-0.14	0.20	8.73
Bidvest Ltd	BVT	21182	21125	0.27	-10.59	-19.66
Boxer	BOX	6916	6829	1.27	-1.40	7.39
Bytes Technology Grp PLC	BYI	9230	9197	0.36	-5.33	-6.11
Capital&Counties Prop plc	CCO	3270	3241	0.89	-5.98	4.57
Clicks Group Ltd	CLS	35244	35426	-0.51	-5.54	-5.54
Dis-Chem Pharmacies Ltd	DCP	3274	3264	0.31	-3.85	-9.31
Exxaro Resources Ltd	EXX	18018	17848	0.95	-6.50	14.07
Fortress Real Est INV B	FFB	2307	2294	0.57	2.44	13.87
Growthpoint Prop Ltd	GRT	1473	1480	-0.47	2.08	15.71
Harmony GM Co Ltd	HAR	31486	31680	-0.61	33.89	108.96
Hammerson plc	HMN	6700	6667	0.49	-2.45	0.45
Investec Ltd	INL	12812	12906	-0.73	-1.89	2.46
Investec plc	INP	12813	12994	-1.39	-1.23	1.13
Italtile Ltd	ITE	926	950	-2.53	-16.27	-34.51
Life Healthc Grp Hldgs Ltd	LHC	1159	1150	0.78	-14.84	-29.24
MultiChoice Group Ltd	MCG	12523	12432	0.73	2.06	15.95
Montauk Renewables Inc	MKR	3461	3800	-8.92	-9.66	-58.30
Mr Price Group Ltd	MRP	20370	20498	-0.62	-1.81	-31.01
Momentum Met Hldgs Ltd	MTM	3279	3243	1.11	-8.15	8.36
Ninety One Plc	N91	4696	4648	1.03	3.89	36.59
Nedbank Group Ltd	NED	21350	21135	1.02	-5.71	-24.21
Northam Platinum Hldgs Ltd	NPH	28100	27813	1.03	42.39	188.47
NEPI Rockcastle N.V.	NRP	13829	13656	1.27	-5.61	0.22
Netcare Limited	NTC	1420	1369	3.73	2.08	-4.83
Ninety One Limited	NY1	4547	4502	1.00	2.62	31.26
Old Mutual Limited	OMU	1335	1341	-0.45	-3.96	6.71
OUTsurance Group Ltd	OUT	7170	7073	1.37	-5.61	7.82
Pick n Pay Stores Ltd	PIK	2539	2528	0.44	-7.94	-17.30
Pepkor Holdings Ltd	PPH	2431	2413	0.75	-4.29	-16.03
Quilter Plc	QLT	3829	3729	2.68	-1.82	7.68
Redefine Properties Ltd	RDF	497	493	0.81	-1.78	9.23
Remgro Ltd	REM	16773	16961	-1.11	-1.07	8.14
Resilient REIT Limited	RES	6406	6350	0.88	-4.45	9.02
Reinet Investments S.C.A	RNI	50500	50712	-0.42	-5.69	12.93
Sappi Ltd	SAP	2312	2289	1.00	-20.41	-53.07
Santam Limited	SNT	37788	38249	-1.21	-13.73	-3.76
The Spar Group Ltd	SPP	9860	9773	0.89	-8.92	-32.51
Sirius Real Estate Ltd	SRE	2250	2216	1.53	-7.02	22.28
Tiger Brands Ltd	TBS	30876	30358	1.71	-0.72	6.83
Transaction Capital Ltd	TCP	100	96	4.17	-15.25	-59.02
The Foschini Group Limited	TFG	10911	10946	-0.32	0.27	-35.05
Thungela Resources Ltd	TGA	8751	8762	-0.13	-5.94	-34.54
Telkom SA SOC Ltd	TKG	5117	4935	3.69	1.57	46.33
Truworths Int Ltd	TRU	5470	5504	-0.62	-9.17	-47.21
Woolworths Holdings Ltd	WHL	5029	5014	0.30	-3.18	-19.34
Zeda Limited	ZZD	1257	1250	0.56	-1.41	-5.49

LOCAL EQUITIES | JSE SMALL CAP COMPANIES (Cents Per Share)

COMPANY	CODE	CLOSE	PREVIOUS	1D%	1M%	YTD%
ArcelorMittal SA Limited	ACL	145	137	5.84	39.42	8.21
AdvTECH Ltd	ADH	3148	3169	-0.66	-5.72	-6.97
Altron Limited A	AEL	1825	1835	-0.54	-3.08	-14.12
AECI Limited	AFE	9714	9481	2.46	-9.67	11.12
Alexander Forbes Grp Hldgs	AFH	769	739	4.06	-8.56	-5.64
Afrimat Limited	AFT	3805	3793	0.32	-3.18	-46.37
Adcock Ingram Hldgs Ltd	AIP	7200	7200	0.00	0.35	7.46
Astral Foods Ltd	ARL	20527	20307	1.08	-2.10	9.77
Attacq Limited	ATT	1380	1380	0.00	-4.03	-0.50
Brait PLC	BAT	213	204	4.41	-0.93	2.90
Blue Label Telecoms Ltd	BLU	1199	1212	-1.07	-2.91	105.31
Burstone Group	BTN	815	807	0.99	-5.01	-13.30
Coronation Fund Mngrs Ld	CML	4451	4406	1.02	2.13	13.66
Curro Holdings Limited	COH	1200	1201	-0.08	2.13	-8.05
Cashbuild Ltd	CSB	13900	13710	1.39	-8.28	-34.31
DRD Gold Ltd	DRD	4813	4822	-0.19	50.64	191.17
Datec Ltd	DTC	6006	5908	1.66	-4.67	20.43
Emira Property Fund Ltd	EMI	1210	1190	1.68	2.63	11.01
Equites Prop Fund Ltd	EQU	1606	1615	-0.56	-3.43	9.25
Famous Brands Ltd	FBR	5350	5288	1.17	-8.03	-22.46
Fairvest Limited B	FTB	551	555	-0.72	1.29	15.51
Grindrod Ltd	GND	1503	1496	0.47	-2.08	25.67
Hosken Cons Inv Ltd	HCI	12344	12000	2.87	1.08	-24.73
Hudaco Industries Ltd	HDC	17599	17600	-0.01	-1.87	-18.52
Hyprop Inv Ltd	HYP	4674	4650	0.52	-0.09	0.58
JSE Ltd	JSE	12748	12703	0.35	0.63	5.60
KAP Industrial Hldgs Ltd	KAP	165	173	-4.62	-20.29	-46.25
Karoo Ltd	KRO	100800	97001	3.92	10.76	15.86
PSG Konsult Limited	KST	2280	2255	1.11	1.24	16.21
Libstar Holdings Ltd	LBR	479	469	2.13	25.07	10.11
Lighthouse Properties plc	LTE	785	785	0.00	-5.42	-2.24
Industrials REIT Limited	MLI	40	41.5	-3.61	-5.88	53.85
MAS P.L.C	MSP	2125	2111	0.66	1.19	-8.80
Metair Investments Ltd	MTA	677	695	-2.59	7.46	-31.27
Motus Holdings Ltd	MTH	10400	10392	0.08	0.48	-14.41
Murray & Roberts Hldgs	MUR	110	110	0.00	0.00	0.00
Oceana Group Ltd	OCE	4950	5150	-3.88	-2.94	-26.64
Omnia Holdings Ltd	OMN	7158	7343	-2.52	-2.51	-8.35
Pan African Resource plc	PAN	2031	2018	0.64	35.85	147.99
PPC Limited	PPC	540	555	-2.70	6.09	4.85
Raubex Group Ltd	RBX	4260	4350	-2.07	-3.03	-19.62
RFG Holdings Limited	RFG	1695	1650	2.73	4.63	-18.08
Reunert Ltd	RLO	5382	5359	0.43	-2.87	-28.24
SA Corp Real Estate Ltd	SAC	310	311	-0.32	0.65	6.16
Super Group Ltd	SPG	1271	1274	-0.24	-11.37	-56.92
Stor-Age Prop REIT Ltd	SSS	1550	1561	-0.70	-1.59	-0.51
Southern Sun LTD	SSU	855	867	-1.38	-1.84	-5.84
Sun International Ltd	SUI	4035	3950	2.15	-13.60	-7.24
Tharisa plc	THA	2420	2329	3.91	12.56	49.20
Tsogo Sun Gaming Ltd	TSG	651	636	2.36	-3.56	-36.18
Vukile Property Fund Ltd	VKE	2074	2055	0.92	-3.08	15.41
Wilson Bayly Hlm-Ovc Ltd	WBO	15030	15200	-1.12	-11.80	-35.57

10-YEAR BOND YIELD | SELECTED ITEMS (Basis Point Change)

REGION	YIELD	1D	1M	1Y
United States	4.15%	1	-8	37
United Kingdom	4.70%	0	-2	70
Germany	2.71%	0	-1	59
Japan	1.64%	1	5	79
South African 10Y	9.16%	1	-42	20

GLOBAL INTEREST RATES | SELECTED ITEMS

REGION	DATE CHANGED	CURRENT RATE
United States	Sep '25	4.25-4.50%
United Kingdom	Aug '24	4.00%
European	Jun '25	2.15%
SA Repo Rate	Jul '25	7.00%
SA Prime Rate	Jul '25	10.50%

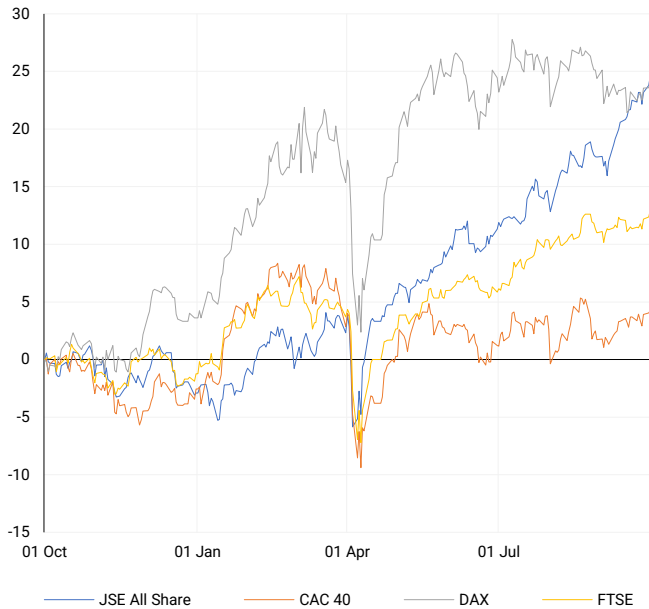
SOUTH AFRICAN 10-YEAR

2024 vs 2025 to date



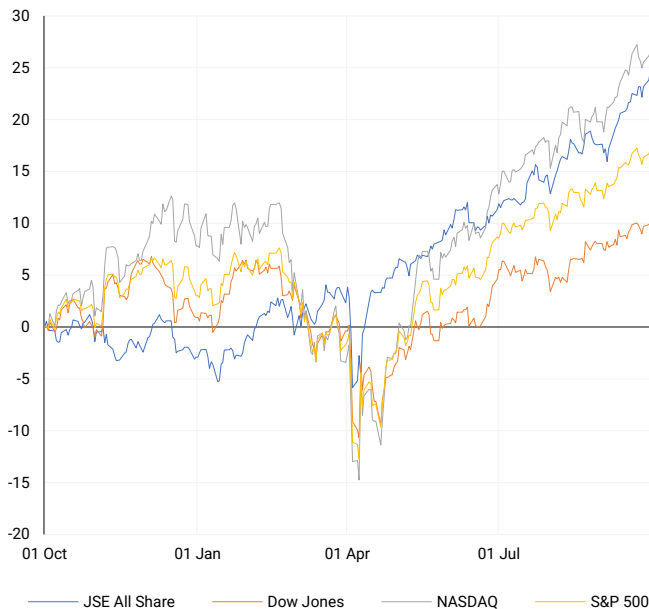
EUROPEAN INDICES

Normalised percentage performances



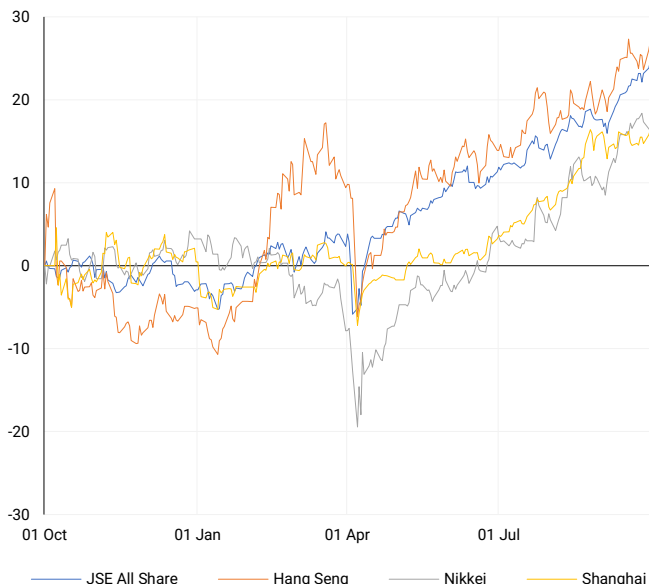
AMERICAN INDICES

Normalised percentage performances



ASIAN INDICES

Normalised percentage performances



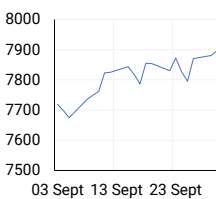
EUROPEAN MARKET SUMMARY

SELECTED ITEMS

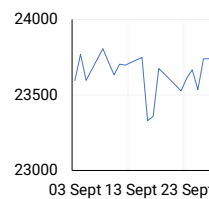
European shares closed higher with the STOXX 600 up 0.5%, and the FTSE 100 hit a record intraday high despite U.S. shutdown risks. ECB President Lagarde indicated no near-term rate changes as inflation stays near the 2% target, aided by eurozone tariff resilience. However, German inflation unexpectedly rose to 2.4% in September, and Irish consumer prices jumped to 2.7% year-on-year, showing mixed inflation signals amid a generally stable eurozone economy.

EUROPEAN INDICES	CLOSE	PREVIOUS	1D%	5D%	1M%	YTD%
CAC 40	7895.94	7880.87	0.19	0.30	2.49	6.98
DAX 30	23880.72	23745.06	0.57	1.14	-0.09	19.95
Eurostoxx 50	5524.70	5520.40	0.08	0.82	3.22	12.84
FTSE	9350.43	9299.84	0.54	1.38	1.78	14.41

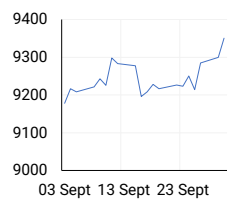
CAC 40



DAX



FTSE



AMERICAN MARKET SUMMARY

SELECTED ITEMS

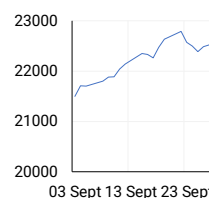
Wall Street's major indexes ended higher, marking multiple consecutive monthly gains despite looming shutdown concerns. The S&P 500, Nasdaq, and Dow showed solid quarterly growth. Job openings rose modestly, but consumer confidence fell more than expected. Healthcare led gains, boosted by Pfizer's 6.8% rally after promising drug price cuts tied to tariff relief. The shutdown, caused by Congressional deadlock over funding and ACA tax credits, threatens to delay key economic data and complicate Federal Reserve interest rate policy.

AMERICAN INDICES	CLOSE	PREVIOUS	1D%	5D%	1M%	YTD%
Dow Jones	46397.89	46316.07	0.18	0.23	1.87	9.06
Nasdaq	22660.01	22591.15	0.30	0.38	5.61	17.34
S&P 500	6688.46	6661.21	0.41	0.47	3.53	13.72
US VIX	16.28	16.12	0.99	-2.16	5.99	-6.17

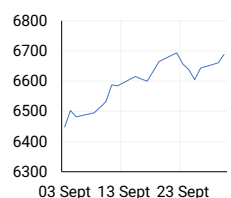
DOW JONES



NASDAQ



S&P 500



ASIAN MARKET SUMMARY

SELECTED ITEMS

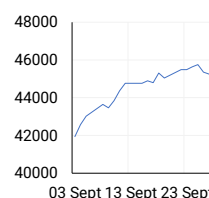
Asia-Pacific markets showed mixed results, with investors seemingly unfazed by the pending U.S. government shutdown. Japan's Tankan survey revealed a slight rise in business optimism among large manufacturers (+14), though below expectations. Non-manufacturing sentiment remained stable. Investors await India's Reserve Bank interest rate decision. China's property market struggles continue, with new home prices growing just 0.09% in September and resale prices falling 0.74%, despite government support measures, highlighting ongoing real estate challenges.

ASIAN INDICES	CLOSE	PREVIOUS	1D%	5D%	1M%	YTD%
Hang Seng	26855.56	26622.88	0.87	2.66	7.09	33.88
Nikkei 225	44932.63	45043.75	-0.25	-1.23	5.18	12.63
Shanghai	3882.78	3862.53	0.52	1.59	0.64	15.84

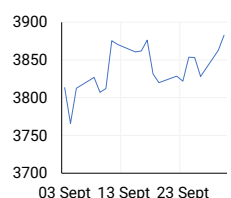
HANG SENG



NIKKEI



SHANGHAI



COMMODITIES MARKET SUMMARY

SELECTED ITEMS

Exxon Mobil identified South Africa as a key LNG market as Mozambique pipeline supplies dwindle. The U.S. remains the world's top LNG exporter, potentially increasing gas oversupply by 2030. Gold hit record highs amid U.S. shutdown fears and weak labor data, driving expectations for Fed rate cuts. Oil prices steadied after recent losses, supported by falling U.S. crude stocks despite rising gasoline and distillate inventories, reflecting mixed supply-demand dynamics in global energy markets.

COMMODITY	LAST	CLOSE	% CHG	1D%	5D%	YTD%
Brent Crude	---	67.06	N/A	-0.87	-1.18	-10.38
Gold	---	3858.64	N/A	0.65	2.51	47.03
Palladium	---	1259.05	N/A	-1.08	3.17	41.71
Platinum	---	1576.05	N/A	-1.82	6.34	76.39
Silver	---	46.64	N/A	-0.60	5.93	61.50

PLATINUM

One-year



GOLD

One-year



CURRENCY MARKET SUMMARY

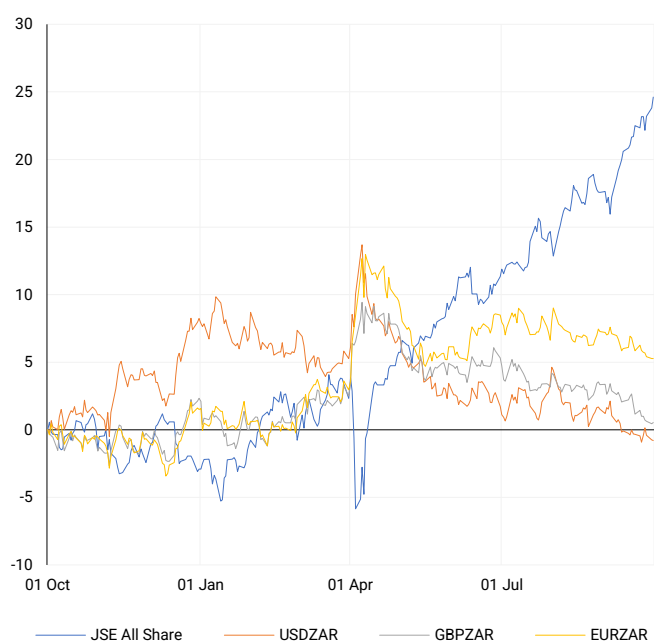
SELECTED ITEMS

The South African rand softened following mixed local economic data, including central bank reports and a growing budget deficit. The British pound edged up but is poised for its fourth straight monthly loss versus the euro and its first decline against the U.S. dollar since July. The U.S. dollar hovered near a one-week low amid shutdown concerns, which risk delaying crucial jobs data and increasing market uncertainty over Federal Reserve policy in the near term.

CURRENCY PAIR	LAST	CLOSE	% CHG	1D%	5D%	YTD%
USDZAR	---	17.27	N/A	-0.03	0.13	-8.34
GBPZAR	---	23.22	N/A	0.09	-0.45	-1.75
EURZAR	---	20.26	N/A	0.01	-0.55	3.71
AUDZAR	---	11.42	N/A	0.52	0.35	-2.20
EURUSD	---	1.17	N/A	0.06	-0.69	13.34
USDJPY	---	147.93	N/A	-0.45	0.19	-5.93
GBPUSD	---	1.34	N/A	0.12	-0.60	7.44
USDCHF	---	0.80	N/A	-0.15	0.66	-12.23

CURRENCY PAIRS vs JSE ALL SHARE

Normalised percentage performances



USDZAR

One-year



EURUSD

One-year



SOURCES | JSE, IRESS, MONEYWEB, CNBC, BBC, CNN

Disclaimer: This note is prepared for Sanlam Private Wealth (Pty) Ltd, by K2013143132 (Pty) Ltd trading as ThompsonGreen. ThompsonGreen is an independent company contracted to Sanlam Private Wealth (Pty) Ltd. The views expressed in this note are those of ThompsonGreen and/or its analysts and not necessarily the views of Sanlam Private Wealth (Pty) Ltd, Sanlam or any officer or agent thereof. K2013143132 (Pty) Ltd trading as ThompsonGreen is a research house and not a registered broker, financial adviser or financial service provider. Our editors and customer services teams also do not give personal investment advice. The information in this document is general advice only and may not be appropriate to your particular investment objectives, financial situation or particular needs. Before investing, or if you are in any doubt about your personal situation, you should seek professional advice from a stockbroker or independent financial adviser authorised by the Financial Sector Conduct Authority.