

GLOBAL OVERVIEW | SELECTED INDICES

SOUTH AFRICAN INDICES						
	CLOSE	PREVIOUS	1D%	5D%	1M%	YTD%
All Share	109778.10	108089.90	1.56	2.88	8.14	30.54
Top 40	102696.70	101107.07	1.57	3.00	9.03	36.24
Financial 15	21675.22	21272.54	1.89	2.02	2.65	5.17
Industrial 25	145560.96	143757.21	1.25	4.12	6.90	22.65
Resource 10	112669.96	110877.00	1.62	2.19	17.89	117.06
Mid Cap	104007.70	102914.40	1.06	1.10	4.14	16.30
Small Cap	99440.75	97648.85	1.84	2.45	3.78	6.49
Banks	13225.80	12950.70	2.12	2.24	4.56	4.44
Retailers	6457.59	6352.34	1.66	1.81	1.70	-24.17
Property (J253) - TR	2752.22	2703.11	1.82	2.20	3.06	14.51

AMERICAN INDICES						
	CLOSE	PREVIOUS	1D%	5D%	1M%	YTD%
Dow Jones	46758.28	46519.72	0.51	1.10	3.28	9.91
Nasdaq	22780.51	22844.05	-0.28	1.32	5.97	17.97
S&P 500	6715.79	6715.35	0.01	1.09	4.15	14.18
US VIX	16.65	16.63	0.12	8.89	1.83	-4.03

EUROPEAN INDICES						
	CLOSE	PREVIOUS	1D%	5D%	1M%	YTD%
CAC 40	8081.54	8056.63	0.31	2.68	4.69	9.49
DAX 30	24378.80	24422.56	-0.18	2.69	3.32	22.45
Eurostoxx 50	5652.25	5650.60	0.03	2.81	6.00	15.45
FTSE	9491.25	9427.73	0.67	2.22	3.41	16.13

ASIAN INDICES						
	CLOSE	PREVIOUS	1D%	5D%	1M%	YTD%
Hang Seng	27140.92	27287.12	-0.54	3.88	7.09	35.30
Nikkei 225	45769.50	44936.73	1.85	0.91	9.13	14.73
Shanghai	3882.78	3882.78	0.00	1.43	1.82	15.84

EARLY MORNING MARKETS						
	LAST	CLOSE	% CHG	1D%	5D%	YTD%
TENCENT	673.50	676.50	-0.44	2.04	4.08	62.55
BHP AUS	4207	4194	0.31	1.13	0.65	9.76

NOTE: 5D% and 1M% are rolling percentage moves

INTERNATIONAL ECONOMIC CALENDAR | SELECTED EVENTS

TIME	AREA	TODAY'S EVENTS & RELEASES	PERIOD	EXP.	PREV.
19:00	EU	ECB President Lagarde Speaks	--	--	--
19:30	UK	BOE Gov Bailey Speaks	--	--	--
--	--	--	--	--	--
--	--	--	--	--	--
--	--	--	--	--	--

TIME	AREA	PREVIOUS SESSION'S RELEASES	PERIOD	EXP.	ACT.
09:15	SA	S&P Global PMI	--	49.7	50.2
09:55	EU	German Final Services PMI	--	52.5	51.5
10:00	EU	Final Services PMI	--	51.4	51.3
11:40	EU	ECB President Lagarde Speaks	--	--	--
--	--	--	--	--	--

JSE ALL SHARE | BEST AND WORST ONE-DAY PERFORMERS

BEST ONE-DAY % PERFORMERS					
	CODE	CLOSE	1D%	5D%	YTD%
Afrimat Limited	AFT	4060	6.14	6.84	-42.78
Attacq Limited	ATT	1487	6.06	7.68	7.21
South32 Limited	S32	3318	5.80	9.79	-16.80
Emira Property Fund Ltd	EMI	1282	5.51	9.57	17.61
Telkom SA SOC Ltd	TKG	5426	5.09	7.47	55.16
DRD Gold Ltd	DRD	4957	4.75	2.67	199.88

WORST ONE-DAY % PERFORMERS					
	CODE	CLOSE	1D%	5D%	YTD%
Italtile Ltd	ITE	950	-2.06	1.39	-32.81
Metair Investments Ltd	MTA	666	-1.91	-4.72	-32.39
Brait PLC	BAT	206	-1.90	3.00	-0.48
Astral Foods Ltd	ARL	21149	-1.68	5.22	13.10
Tharisa plc	THA	2400	-1.64	3.05	47.97

DIVIDEND DATA

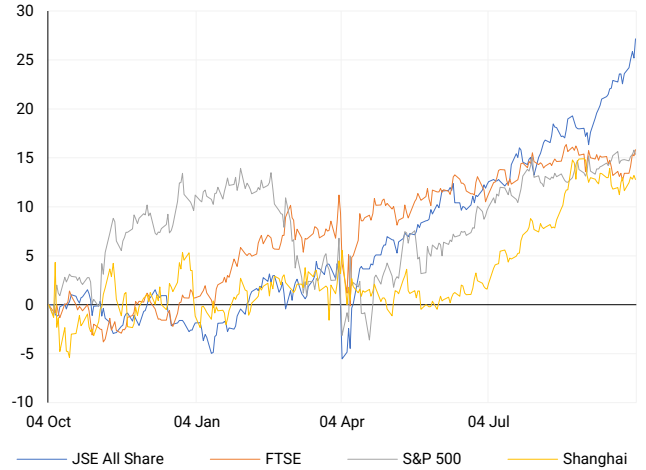
			Last date to trade Tue, 07 October		
COMPANY	CODE	EXPECTED DIVIDEND	COMPANY	CODE	EXPECTED DIVIDEND
FirstRand	FSR	247 ZARc	Attacq	ATT	43 ZARc
Harmony Gold Mining	HAR	155 ZARc	Hyprop Investments	HYP	194 ZARc
Safari Investments RSA	SAR	40 ZARc	Primary Health Properties plc	PHP	1.7 GBPP
Momentum Group	MTM	90 ZARc	--	--	--
Mustek	MST	13 ZARc	--	--	--

SOURCES | JSE, IRESS, MONEYWEB, CNBC, BBC, CNN

PLEASE SEE THE BOTTOM OF THE LAST PAGE FOR THE FULL DISCLAIMER

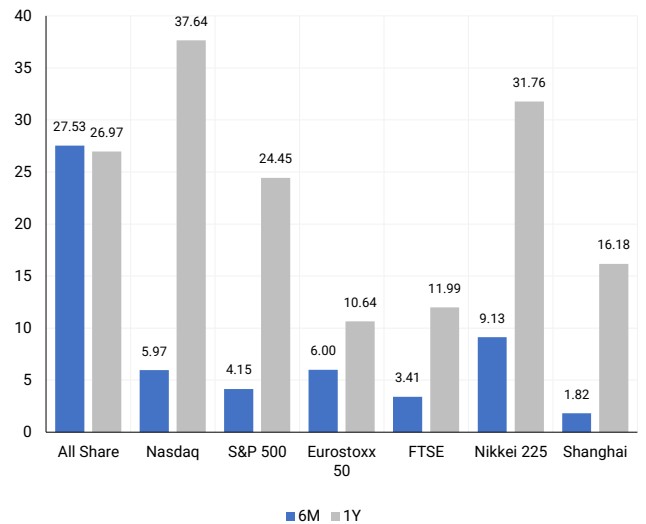
INTERNATIONAL INDICES

Normalised percentage performances - In rand terms



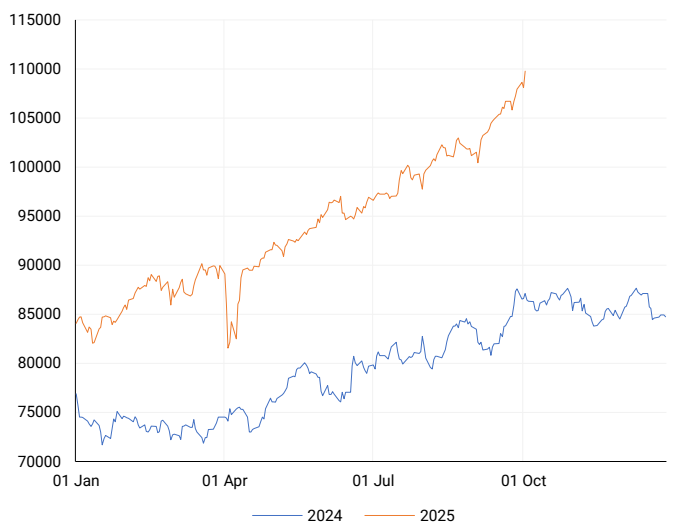
INTERNATIONAL INDICES

6-month & 1-year percentage performances



JSE ALL SHARE INDEX

2024 v 2025 to date



LOCAL EQUITIES | JSE LARGE CAP COMPANIES (Cents Per Share)

COMPANY	CLOSE	PREVIOUS	1D%	5D%	1M%	YTD%
Absa Group Limited	18885	18556	1.77	4.34	2.08	-0.47
Anglo American plc	65010	64126	1.38	4.20	20.00	17.80
Anglogold Ashanti Ltd	125316	121764	2.92	6.50	19.18	197.66
Anheuser-Busch InBev SA NV	102776	104282	-1.44	-0.87	-3.17	9.57
BHP Group Limited	48376	47074	2.77	1.81	0.67	5.08
BID Corporation Ltd	43232	43157	0.17	0.42	-1.29	0.41
British American Tob plc	88560	89255	-0.78	-3.29	-8.47	30.90
Compagnie Fin Richemont	338000	333586	1.32	4.28	9.11	21.76
Capitec Bank Hldgs Ltd	347687	342703	1.45	-1.48	0.94	10.93
Discovery Ltd	20100	19874	1.14	4.63	-9.46	3.20
Firststrand Ltd	7964	7810	1.97	1.69	9.83	4.84
Gold Fields Ltd	72681	71248	2.01	2.88	17.62	194.14
Glencore plc	8032	7911	1.53	3.00	18.26	-3.83
Impala Platinum Hlgs Ltd	22150	22006	0.65	-0.74	18.54	152.42
Kumba Iron Ore Ltd	32795	32352	1.37	1.28	4.57	0.52
Mondi plc	24375	24160	0.89	3.73	0.37	-12.16
MTN Group Ltd	14647	14315	2.32	5.82	4.77	59.22
Naspers Ltd -N-	130567	127985	2.02	7.64	15.34	-68.71
Prosus N.V.	125316	123528	1.45	6.15	16.85	67.30
South32 Limited	3318	3136	5.80	9.79	9.00	-16.80
Standard Bank Group Ltd	24649	24001	2.70	4.27	2.74	11.15
Shoprite Holdings Ltd	27963	27850	0.41	1.32	2.16	-5.05
Sanlam Limited	8562	8400	1.93	3.19	-0.44	-1.45
Sasol Limited	10672	10645	0.25	-2.61	-15.92	28.16
Sibanye Stillwater Ltd	4895	4844	1.05	2.53	25.84	226.77
Valterra	119152	118984	0.14	-4.64	28.91	109.42
Vodacom Group Ltd	13500	13339	1.21	1.58	-1.29	33.19

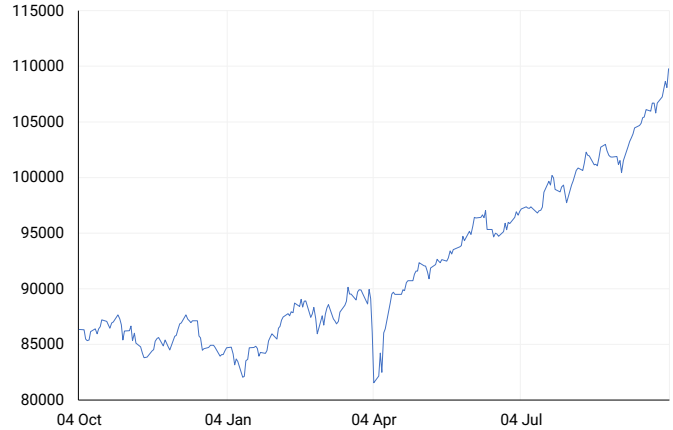
SOUTH AFRICAN MARKET SUMMARY

SELECTED ITEMS

South Africa's All Share Index slipped 0.52% to 108,090, while the Top 40 fell 0.58%. The government secured commitments from Chinese and Indian automakers to upgrade local assembly to full manufacturing, alongside Toyota and Ford, advancing localisation. Industry leaders called for a national EV policy to reduce China reliance. Finance Minister Godongwana urged African nations to raise health funding domestically via tobacco and alcohol taxes amid declining foreign aid. These developments highlight shifting industrial and fiscal strategies as South Africa seeks to bolster economic resilience and healthcare funding.

JSE ALL SHARE

One-year



LOCAL INDICES

Normalised percentage performances



LOCAL SENS ANNOUNCEMENTS

SELECTED RELEASE

Tongaat Hulett - Tongaat's Business Rescue Enters Third Year

Tongaat Hulett has published its 33rd monthly update on its ongoing business rescue proceedings, initiated in October 2022. The September 2025 report, issued under statutory requirements, includes a progress update and outlines litigation developments in section 2.3. With restructuring efforts still underway, stakeholders remain focused on the potential financial and legal implications. The prolonged nature of the rescue underscores the complexity of the Company's recovery efforts and the uncertainty surrounding future value realisation for shareholders and creditors alike.

TON | 0.00% | Open : 404 | High : 404 | Low : 404 | Close : 404

Tharisa plc - Tharisa Advances Long-Life Underground Mining Plan

Tharisa has unveiled a phased transition of its flagship mine from open pit to underground operations, securing mine life for over 50 years. The Apollo and Orion underground complexes will begin ramping up from 2031, replacing open pit production by FY2035 while maintaining the 5.6 Mtpa processing capacity. The \$547 million capex programme, peaking at \$173 million, will be funded through internal cash and external lines. The shift supports operational efficiency, lower dilution, ESG targets, and long-term PGM and chrome output. A contractor mining model will underpin scalability and cost control.

THA | -1.64% | Open : 2440 | High : 2441 | Low : 2340 | Close : 2400

EXPECTED COMPANY REPORTING SCHEDULE

COMPANY	CODE	RELEASE	DATE
Sable Exploration and Mining	SXM	Final	Mon, 06 Oct
Montauk Renewables	MKR	Quarterly	Thu, 09 Oct
Newpark REIT	NRL	Interim	Fri, 10 Oct
Sable Exploration and Mining	SXM	Final	Mon, 06 Oct
Montauk Renewables	MKR	Quarterly	Thu, 09 Oct

BANK AND OTHER SELECTED PREFERENCE SHARES

COMPANY	CODE	CLOSE	CLEAN YIELD	NEXT LDT (Est.)
Investec Limited	INPR	9899	9.34	Tue, 10 Jun '25
Standard Bank	SBPP	9505	9.44	Wed, 03 Sept '25
Capitec	CPIP	10823	8.89	Wed, 17 Sept '25
Grindrod	GNDP	9703	10.63	Wed, 17 Sept '25
Netcare	NTCP	9499	10.06	Wed, 12 Nov '25
Discovery	DSBP	11749	9.89	Wed, 17 Sept '25

LOCAL EQUITIES | JSE MID CAP COMPANIES (Cents Per Share)

COMPANY	CODE	CLOSE	PREVIOUS	1D%	1M%	YTD%
Aspen Pharmicare Hldgs Ltd	APN	9720	9626	0.98	-4.30	-41.04
African Rainbow Min Ltd	ARI	18400	18174	1.24	-8.02	22.35
AVI Ltd	AVI	9800	9827	-0.27	9.46	-10.68
Barloworld Ltd	BAW	11972	11965	0.06	1.89	10.31
Bidvest Ltd	BVT	21815	21497	1.48	0.41	-17.26
Boxer	BOX	6983	6940	0.62	5.53	8.43
Bytes Technology Grp PLC	BYI	9275	9167	1.18	-5.24	-5.66
Capital&Counties Prop plc	CCO	3316	3273	1.31	1.62	6.04
Clicks Group Ltd	CLS	35353	35433	-0.23	-3.05	-5.25
Dis-Chem Pharmacies Ltd	DCP	3294	3265	0.89	1.42	-8.75
Exxaro Resources Ltd	EXX	17290	17200	0.52	-4.96	9.47
Fortress Real Est INV B	FFB	2340	2325	0.65	6.32	15.50
Growthpoint Prop Ltd	GRT	1500	1470	2.04	7.45	17.83
Harmony GM Co Ltd	HAR	31654	31282	1.19	16.93	110.07
Hammerson plc	HMN	6809	6701	1.61	7.09	2.08
Investec Ltd	INL	13099	12788	2.43	3.00	4.76
Investec plc	INP	13090	12852	1.85	2.72	3.31
Italtile Ltd	ITE	950	970	-2.06	-12.44	-32.81
Life Healthc Grp Hldgs Ltd	LHC	1188	1178	0.85	-9.66	-27.47
MultiChoice Group Ltd	MCG	12461	12427	0.27	1.60	15.38
Montauk Renewables Inc	MKR	3660	3699	-1.05	-1.11	-55.90
Mr Price Group Ltd	MRP	20773	20552	1.08	2.50	-29.64
Momentum Met Hldgs Ltd	MTM	3385	3250	4.15	0.68	11.86
Ninety One Plc	N91	4808	4740	1.43	8.90	39.85
Nedbank Group Ltd	NED	22697	21937	3.46	6.77	-19.43
Northam Platinum Hldgs Ltd	NPH	28000	27716	1.02	23.26	187.44
NEPI Rockcastle N.V.	NRP	13910	13780	0.94	-3.12	0.80
Netcare Limited	NTC	1420	1433	-0.91	4.41	-4.83
Ninety One Limited	NY1	4635	4547	1.94	7.69	33.80
Old Mutual Limited	OMU	1306	1282	1.87	-1.73	4.40
OUTsurance Group Ltd	OUT	7372	7229	1.98	0.44	10.86
Pick n Pay Stores Ltd	PIK	2530	2522	0.32	-5.46	-17.59
Pepkor Holdings Ltd	PPH	2478	2442	1.47	0.16	-14.40
Quilter Plc	QLT	3790	3780	0.26	1.96	6.58
Redefine Properties Ltd	RDF	507	493	2.84	3.26	11.43
Remgro Ltd	REM	16965	16833	0.78	2.69	9.38
Resilient REIT Limited	RES	6558	6464	1.45	2.71	11.61
Reinet Investments S.C.A	RNI	50850	50700	0.30	-2.37	13.72
Sappi Ltd	SAP	2355	2315	1.73	-22.17	-52.19
Santam Limited	SNT	37976	37777	0.53	-8.81	-3.28
The Spar Group Ltd	SPP	10059	10174	-1.13	-2.86	-31.15
Sirius Real Estate Ltd	SRE	2250	2250	0.00	-2.17	22.28
Tiger Brands Ltd	TBS	31674	31500	0.55	4.35	9.59
Transaction Capital Ltd	TCP	99	100	-1.00	-9.17	-59.43
The Foschini Group Limited	TFG	11081	10891	1.74	6.56	-34.04
Thungela Resources Ltd	TGA	8641	8550	1.06	-7.79	-35.37
Telkom SA SOC Ltd	TKG	5426	5163	5.09	10.40	55.16
Truworths Int Ltd	TRU	5655	5501	2.80	1.75	-45.42
Woolworths Holdings Ltd	WHL	5238	5129	2.13	-0.08	-15.99
Zeda Limited	ZZD	1275	1260	1.19	0.00	-4.14

LOCAL EQUITIES | JSE SMALL CAP COMPANIES (Cents Per Share)

COMPANY	CODE	CLOSE	PREVIOUS	1D%	1M%	YTD%
ArcelorMittal SA Limited	ACL	135	148	-8.78	22.73	0.75
AdvTECH Ltd	ADH	3265	3152	3.59	3.03	-3.52
Altron Limited A	AEL	1878	1854	1.29	-1.05	-11.62
AECI Limited	AFE	9612	9576	0.38	-9.32	9.95
Alexander Forbes Grp Hldgs	AFH	763	760	0.39	-5.80	-6.38
Afrimat Limited	AFT	4060	3825	6.14	7.84	-42.78
Adcock Ingram Hldgs Ltd	AIP	7247	7185	0.86	0.51	8.16
Astral Foods Ltd	ARL	21149	21511	-1.68	5.26	13.10
Attacq Limited	ATT	1487	1402	6.06	4.35	7.21
Brait PLC	BAT	206	210	-1.90	-4.63	-0.48
Blue Label Telecoms Ltd	BLU	1322	1282	3.12	4.51	126.37
Burstone Group	BTN	819	805	1.74	0.37	-12.87
Coronation Fund Mngrs Ld	CML	4547	4464	1.86	5.60	16.11
Curro Holdings Limited	COH	1198	1189	0.76	5.00	-8.20
Cashbuild Ltd	CSB	14020	14001	0.14	-3.32	-33.74
DRD Gold Ltd	DRD	4957	4732	4.75	35.92	199.88
Datatec Ltd	DTC	6048	5936	1.89	0.80	21.28
Emira Property Fund Ltd	EMI	1282	1215	5.51	9.76	17.61
Equites Prop Fund Ltd	EQU	1669	1636	2.02	1.64	13.54
Famous Brands Ltd	FBR	5247	5313	-1.24	-6.09	-23.96
Fairvest Limited B	FTB	572	565	1.24	3.62	19.92
Grindrod Ltd	GND	1538	1515	1.52	1.12	28.60
Hosken Cons Inv Ltd	HCI	12994	12882	0.87	8.47	-20.77
Hudaco Industries Ltd	HDC	18987	18200	4.32	6.10	-12.10
Hyprop Inv Ltd	HYP	4798	4682	2.48	6.10	3.25
JSE Ltd	JSE	12906	12770	1.06	2.96	6.91
KAP Industrial Hldgs Ltd	KAP	162	161	0.62	-12.90	-47.23
Karoo Ltd	KRO	100022	97000	3.12	7.63	14.97
PSG Konsult Limited	KST	2389	2370	0.80	9.09	21.76
Libstar Holdings Ltd	LBR	455	451	0.89	20.69	4.60
Lighthouse Properties plc	LTE	784	785	-0.13	-3.57	-2.37
Industrials REIT Limited	MLI	44	45	-2.22	1.15	69.23
MAS P.L.C	MSP	2165	2131	1.60	3.79	-7.08
Metair Investments Ltd	MTA	666	679	-1.91	4.06	-32.39
Motus Holdings Ltd	MTH	10520	10400	1.15	3.31	-13.42
Murray & Roberts Hldgs	MUR	110	110	0.00	0.00	0.00
Oceana Group Ltd	OCE	4995	4999	-0.08	-3.14	-25.98
Omnia Holdings Ltd	OMN	7413	7316	1.33	2.57	-5.08
Pan African Resource plc	PAN	2065	2025	1.98	26.45	152.14
PPC Limited	PPC	536	530	1.13	8.06	4.08
Raubex Group Ltd	RBX	4215	4127	2.13	-2.00	-20.47
RFG Holdings Limited	RFG	1650	1631	1.16	0.92	-20.25
Reunert Ltd	RLO	5555	5484	1.29	3.10	-25.93
SA Corp Real Estate Ltd	SAC	316	306	3.27	2.27	8.22
Super Group Ltd	SPG	1354	1324	2.27	-4.85	-54.10
Stor-Age Prop REIT Ltd	SSS	1622	1575	2.98	2.59	4.11
Southern Sun LTD	SSU	845	840	0.60	-1.97	-6.94
Sun International Ltd	SUI	4150	3986	4.11	-11.10	-4.60
Tharisa plc	THA	2400	2440	-1.64	8.06	47.97
Tsogo Sun Gaming Ltd	TSG	652	660	-1.21	2.68	-36.08
Vukile Property Fund Ltd	VKE	2144	2086	2.78	1.08	19.31
Wilson Bayly Hlm-Ovc Ltd	WBO	15014	14950	0.43	-11.36	-35.64

10-YEAR BOND YIELD | SELECTED ITEMS (Basis Point Change)

REGION	YIELD	1D	1M	1Y
United States	4.15%	3	7	18
United Kingdom	4.69%	0	4	56
Germany	2.70%	0	4	49
Japan	1.67%	2	10	80
South African 10Y	9.16%	-2	-46	-5

GLOBAL INTEREST RATES | SELECTED ITEMS

REGION	DATE CHANGED	CURRENT RATE
United States	Sep '25	4.25-4.50%
United Kingdom	Aug '24	4.00%
European	Jun '25	2.15%
SA Repo Rate	Jul '25	7.00%
SA Prime Rate	Jul '25	10.50%

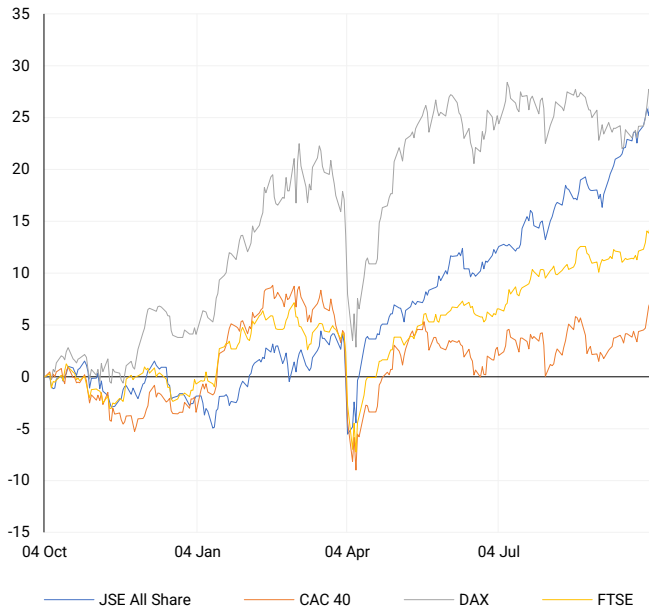
SOUTH AFRICAN 10-YEAR

2024 vs 2025 to date



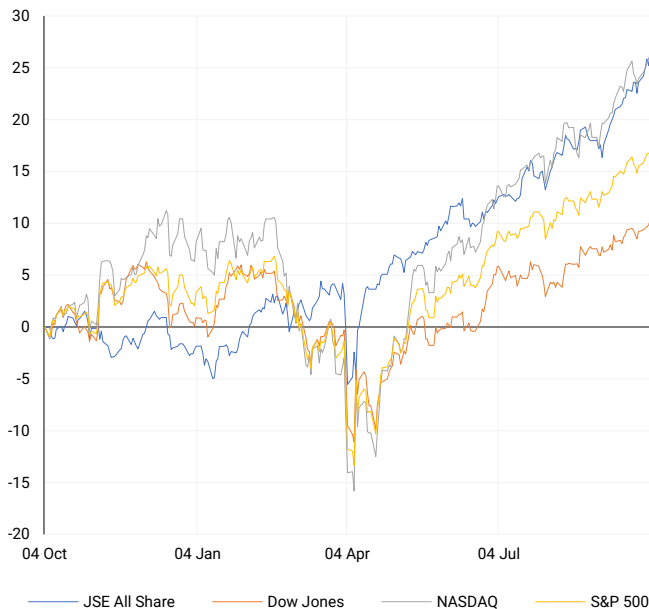
EUROPEAN INDICES

Normalised percentage performances



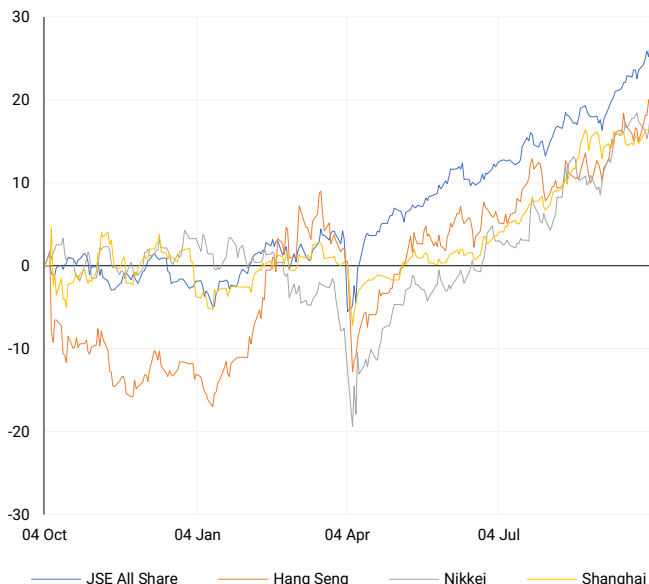
AMERICAN INDICES

Normalised percentage performances



ASIAN INDICES

Normalised percentage performances

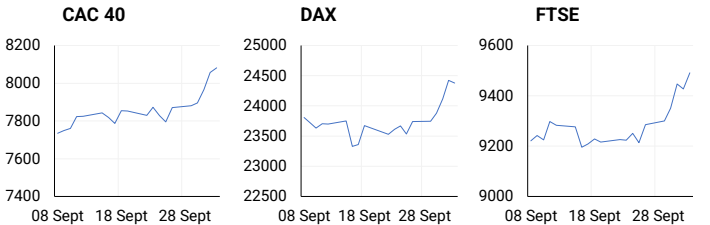


EUROPEAN MARKET SUMMARY

SELECTED ITEMS

European equities reached new record highs, with the STOXX 600 up 0.5%, supported by industrials and a 2.3% surge in tech stocks. Siemens and Schneider Electric led gains, while semiconductor optimism rose on supply deals involving Samsung, SK Hynix, and OpenAI. Rate cut expectations from the U.S. further lifted sentiment. Italy's forecast of a 3% budget deficit in 2025—below the EU ceiling for the first time since 2019—boosted investor confidence, potentially improving bond market dynamics and fiscal credibility in the eurozone's third-largest economy.

EUROPEAN INDICES	CLOSE	PREVIOUS	1D%	5D%	1M%	YTD%
CAC 40	8081.54	8056.63	0.31	2.68	4.69	9.49
DAX 30	24378.80	24422.56	-0.18	2.69	3.32	22.45
Eurostoxx 50	5652.25	5650.60	0.03	2.81	6.00	15.45
FTSE	9491.25	9427.73	0.67	2.22	3.41	16.13



AMERICAN MARKET SUMMARY

SELECTED ITEMS

U.S. equity indices hit record highs, led by Nvidia, Apple, and Broadcom, even as the government shutdown delayed critical economic data, including nonfarm payrolls. Weak private job data renewed expectations for two Fed rate cuts in 2025, though Fed officials signalled caution. The S&P 500 and Nasdaq posted modest gains amid optimism around tech earnings, but macro uncertainty and stretched valuations continue to temper broader risk appetite. The lack of data visibility due to the shutdown has raised near-term volatility risks for economic and policy forecasting.

AMERICAN INDICES	CLOSE	PREVIOUS	1D%	5D%	1M%	YTD%
Dow Jones	46758.28	46519.72	0.51	1.10	3.28	9.91
Nasdaq	22780.51	22844.05	-0.28	1.32	5.97	17.97
S&P 500	6715.79	6715.35	0.01	1.09	4.15	14.18
US VIX	16.65	16.63	0.12	8.89	1.83	-4.03



ASIAN MARKET SUMMARY

SELECTED ITEMS

Asia-Pacific equities advanced, tracking Wall Street gains and brushing aside U.S. shutdown concerns. In Japan, unemployment rose to 2.6% in August, exceeding expectations, but services PMI improved to 53.3, reflecting solid domestic demand. The Bank of Japan hinted at possible rate hikes ahead of a leadership vote that may reshape its ultra-loose policy stance. In Australia, Telstra was fined A\$18 million for secretly throttling internet speeds for nearly 9,000 customers, with mandated compensation. Regional sentiment remains supported by tech momentum and signs of policy normalisation in Japan.

ASIAN INDICES	CLOSE	PREVIOUS	1D%	5D%	1M%	YTD%
Hang Seng	27140.92	27287.12	-0.54	3.88	7.09	35.30
Nikkei 225	45769.50	44936.73	1.85	0.91	9.13	14.73
Shanghai	3882.78	3882.78	0.00	1.43	1.82	15.84



COMMODITIES MARKET SUMMARY

SELECTED ITEMS

Gold remained firm, poised for a seventh consecutive weekly gain, buoyed by safe-haven demand and expectations of further U.S. rate cuts amid political gridlock. Oil prices edged higher but are on course for their steepest weekly drop since June, pressured by expectations of a 500,000 bpd production increase by OPEC+ in November. Rising U.S. inventories and softening demand from refineries added to bearish sentiment. The commodity complex reflects diverging dynamics—gold benefiting from uncertainty, while oil grapples with oversupply risks and seasonally weak demand fundamentals.

COMMODITY	LAST	CLOSE	% CHG	1D%	5D%	YTD%
Brent Crude	---	64.36	N/A	0.09	-7.63	-13.99
Gold	---	3886.77	N/A	0.80	3.37	48.10
Palladium	---	1264.50	N/A	1.61	-0.77	42.32
Platinum	---	1608.61	N/A	2.28	2.36	80.03
Silver	---	48.00	N/A	2.19	4.21	66.21

BRENT CRUDE

One-year



PLATINUM

One-year



GOLD

One-year



CURRENCY MARKET SUMMARY

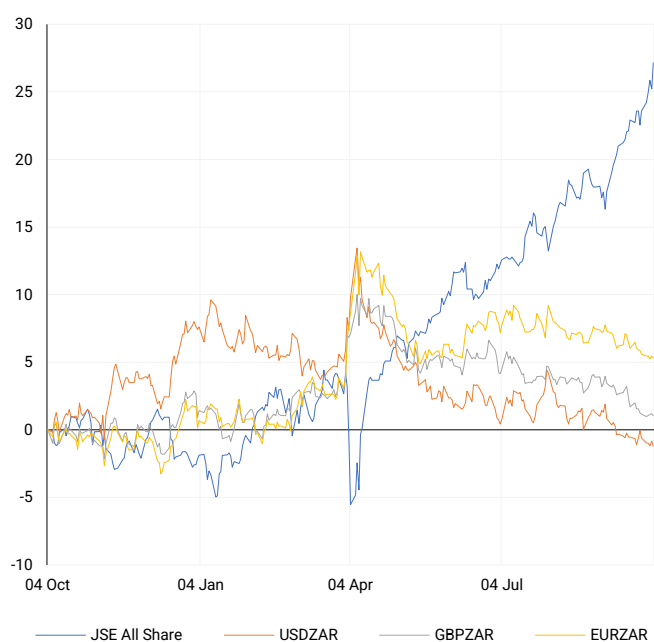
SELECTED ITEMS

The South African rand was steady amid lingering uncertainty over AGOA trade pact renewal. Broader FX markets reflected risk aversion due to the ongoing U.S. government shutdown, which delayed key data releases and clouded the Fed outlook. The dollar weakened broadly, lending support to emerging market currencies. Sterling held at 1.3478 against the dollar ahead of the UK's November budget. The yen trimmed gains after its strongest weekly rally in months, as investors shift focus to the Bank of Japan's policy path and leadership election outcomes.

CURRENCY PAIR	LAST	CLOSE	% CHG	1D%	5D%	YTD%
USDZAR	---	17.23	N/A	-0.38	-0.61	-8.55
GBPZAR	---	23.21	N/A	-0.13	-0.10	-1.77
EURZAR	---	20.23	N/A	-0.15	-0.27	3.55
AUDZAR	---	11.38	N/A	-0.25	0.26	-2.56
EURUSD	---	1.17	N/A	0.24	0.35	13.43
USDJPY	---	147.46	N/A	0.13	-1.37	-6.23
GBPUSD	---	1.35	N/A	0.28	0.55	7.70
USDCHF	---	0.80	N/A	-0.32	-0.35	-12.36

CURRENCY PAIRS vs JSE ALL SHARE

Normalised percentage performances



USDZAR

One-year



EURUSD

One-year



SOURCES | JSE, IRESS, MONEYWEB, CNBC, BBC, CNN

Disclaimer: This note is prepared for Sanlam Private Wealth (Pty) Ltd, by K2013143132 (Pty) Ltd trading as ThompsonGreen. ThompsonGreen is an independent company contracted to Sanlam Private Wealth (Pty) Ltd. The views expressed in this note are those of ThompsonGreen and/or its analysts and not necessarily the views of Sanlam Private Wealth (Pty) Ltd, Sanlam or any officer or agent thereof. K2013143132 (Pty) Ltd trading as ThompsonGreen is a research house and not a registered broker, financial adviser or financial service provider. Our editors and customer services teams also do not give personal investment advice. The information in this document is general advice only and may not be appropriate to your particular investment objectives, financial situation or particular needs. Before investing, or if you are in any doubt about your personal situation, you should seek professional advice from a stockbroker or independent financial adviser authorised by the Financial Sector Conduct Authority.