

GLOBAL OVERVIEW | SELECTED INDICES

SOUTH AFRICAN INDICES						
	CLOSE	PREVIOUS	1D%	5D%	1M%	YTD%
All Share	110970.72	109448.89	1.39	2.14	7.98	31.96
Top 40	103889.97	102337.44	1.52	2.16	8.92	37.82
Financial 15	21868.44	21826.57	0.19	2.55	2.14	6.11
Industrial 25	144499.53	143531.41	0.67	1.06	4.97	21.75
Resource 10	116938.39	112751.35	3.71	3.01	20.59	125.28
Mid Cap	105967.33	104280.72	1.62	2.08	4.85	18.50
Small Cap	100364.92	99539.98	0.83	2.60	3.06	7.48
Banks	13375.31	13374.78	0.00	2.88	3.45	5.62
Retailers	6518.35	6491.11	0.42	2.77	0.16	-23.46
Property (J253) - TR	2773.46	2759.71	0.50	2.90	3.24	15.39

AMERICAN INDICES						
	CLOSE	PREVIOUS	1D%	5D%	1M%	YTD%
Dow Jones	46601.78	46602.98	0.00	0.35	2.39	9.54
Nasdaq	23043.38	22788.36	1.12	1.27	5.71	19.33
S&P 500	6753.72	6714.59	0.58	0.63	3.98	14.83
US VIX	16.30	17.24	-5.45	0.06	7.88	-6.05

EUROPEAN INDICES						
	CLOSE	PREVIOUS	1D%	5D%	1M%	YTD%
CAC 40	8060.13	7974.85	1.07	1.17	4.21	9.20
DAX 30	24597.13	24385.78	0.87	2.01	3.32	23.55
Eurostoxx 50	5644.70	5629.70	0.27	1.05	5.20	15.29
FTSE	9548.87	9483.58	0.69	1.08	3.55	16.83

ASIAN INDICES						
	CLOSE	PREVIOUS	1D%	5D%	1M%	YTD%
Hang Seng	26829.46	26957.77	-0.48	-0.10	4.66	33.75
Nikkei 225	47734.99	47950.88	-0.45	7.15	9.37	19.65
Shanghai	3882.78	3882.78	0.00	0.00	1.46	15.84

EARLY MORNING MARKETS						
	LAST	CLOSE	% CHG	1D%	5D%	YTD%
TENCENT	674.50	675.00	-0.07	-0.37	1.81	62.19
BHP AUS	4303	4189	2.72	-0.17	1.01	9.63

NOTE: 5D% and 1M% are rolling percentage moves

INTERNATIONAL ECONOMIC CALENDAR | SELECTED EVENTS

TIME	AREA	TODAY'S EVENTS & RELEASES	PERIOD	EXP.	PREV.
13:00	SA	Manufacturing Production MoM	--	-0.50%	-1.00%
13:00	SA	Manufacturing Production YoY	--	-0.70%	1.20%
14:30	US	Fed Chair Powell Speaks	--	--	--
--	--	--	--	--	--
--	--	--	--	--	--

TIME	AREA	PREVIOUS SESSION'S RELEASES	PERIOD	EXP.	ACT.
08:00	EU	German Industrial Production m/m	--	-1.00%	-4.30%
16:30	US	Crude Oil Inventories	--	0.4m	3.7m
--	--	--	--	--	--
--	--	--	--	--	--
--	--	--	--	--	--

JSE ALL SHARE | BEST AND WORST ONE-DAY PERFORMERS

BEST ONE-DAY % PERFORMERS						
	CODE	CLOSE	1D%	5D%	YTD%	
African Rainbow Cap Inv	AIL	3	8.00	12.50	-99.71	
Anglo American Plat Ltd	AMS	124589	6.85	-0.33	118.98	
Northam Platinum Hldgs Ltd	NPH	30571	5.98	6.48	213.84	
Impala Platinum Hlgs Ltd	IMP	23600	5.73	7.01	168.95	
Sibanye Stillwater Ltd	SSW	5307	5.15	3.47	254.27	
Pick n Pay Stores Ltd	PIK	2679	4.94	5.47	-12.74	

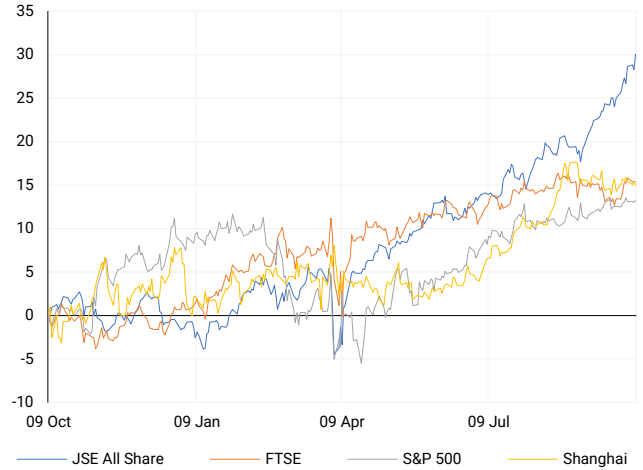
WORST ONE-DAY % PERFORMERS						
	CODE	CLOSE	1D%	5D%	YTD%	
Sappi Ltd	SAP	1940	-4.57	-16.85	-60.62	
Hyprop Inv Ltd	HYP	4614	-4.07	-1.28	-0.71	
Firststrand Ltd	FSR	7819	-3.59	0.68	2.94	
Karoo Ltd	KRO	94766	-3.50	-5.99	8.93	
Afrimat Limited	AFT	4238	-2.84	10.51	-40.27	

DIVIDEND DATA

COMPANY	CODE	EXPECTED DIVIDEND
FirstRand	FSR	247 ZARc
Harmony Gold Mining	HAR	155 ZARc
Safari Investments RSA	SAR	40 ZARc
Momentum Group	MTM	90 ZARc
Mustek	MST	13 ZARc

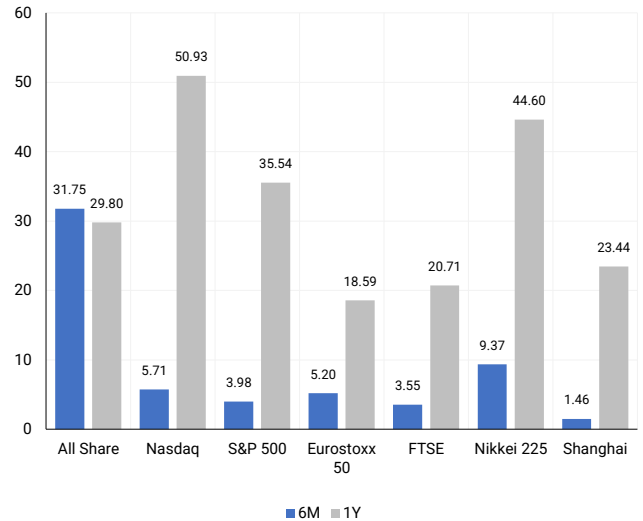
INTERNATIONAL INDICES

Normalised percentage performances - In rand terms



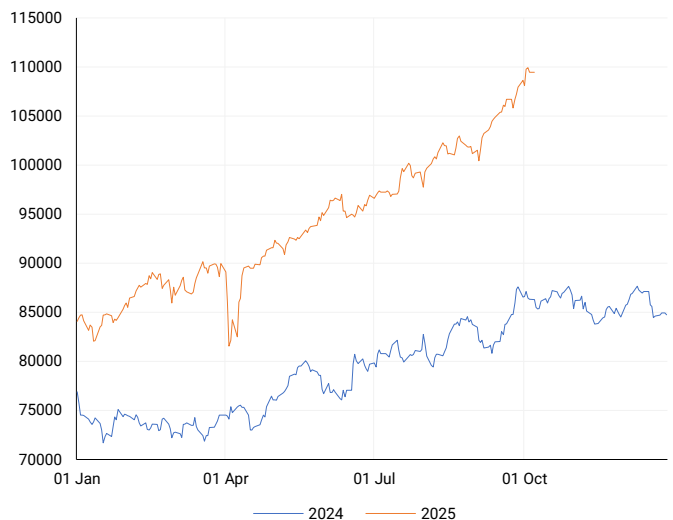
INTERNATIONAL INDICES

6-month & 1-year percentage performances



JSE ALL SHARE INDEX

2024 v 2025 to date



Ex Div Wed, 08 October

**LOCAL EQUITIES | JSE LARGE CAP COMPANIES** (Cents Per Share)

COMPANY	CLOSE	PREVIOUS	1D%	5D%	1M%	YTD%
Absa Group Limited	19197	18995	1.06	4.90	1.49	1.17
Anglo American plc	66270	65442	1.27	2.43	22.66	20.09
Anglogold Ashanti Ltd	131650	127683	3.11	6.44	22.36	212.71
Anheuser-Busch InBev SA NV	102360	102500	-0.14	0.61	-1.93	9.13
BHP Group Limited	48216	47990	0.47	0.24	1.90	4.73
BID Corporation Ltd	42859	42466	0.93	-1.15	-3.29	-0.46
British American Tob plc	88300	88855	-0.62	-0.98	-10.27	30.51
Compagnie Fin Richemont	341975	334241	2.31	4.93	8.00	23.19
Capitec Bank Hldgs Ltd	369059	358886	2.83	4.51	6.52	17.75
Discovery Ltd	20071	20065	0.03	0.88	-10.24	3.05
FirstRand Ltd	7819	8110	-3.59	0.57	5.48	2.94
Gold Fields Ltd	74366	71861	3.49	2.86	18.61	200.96
Glencore plc	8258	8215	0.52	4.29	22.03	-1.13
Impala Platinum Hlgs Ltd	23600	22321	5.73	3.51	20.41	168.95
Kumba Iron Ore Ltd	32000	31800	0.63	-2.55	2.79	-1.92
Mondi plc	19518	19775	-1.30	-18.74	-19.14	-29.66
MTN Group Ltd	15202	14847	2.39	3.15	8.93	65.26
Naspers Ltd -N-	127719	127271	0.35	1.07	11.31	-69.40
Prosus N.V.	123946	123218	0.59	1.58	14.03	65.47
South32 Limited	3456	3382	2.19	10.59	13.31	-13.34
Standard Bank Group Ltd	24767	24592	0.71	2.93	0.47	11.68
Shoprite Holdings Ltd	28045	27922	0.44	0.70	1.17	-4.77
Sanlam Limited	8688	8551	1.60	3.84	3.56	0.00
Sasol Limited	10312	10310	0.02	-3.59	-17.68	23.84
Sibanye Stillwater Ltd	5307	5047	5.15	3.47	33.01	254.27
Valterra	124589	116600	6.85	-0.33	26.18	118.98
Vodacom Group Ltd	13560	13351	1.57	0.92	-1.01	33.78

**SOUTH AFRICAN MARKET SUMMARY**
**SELECTED ITEMS**

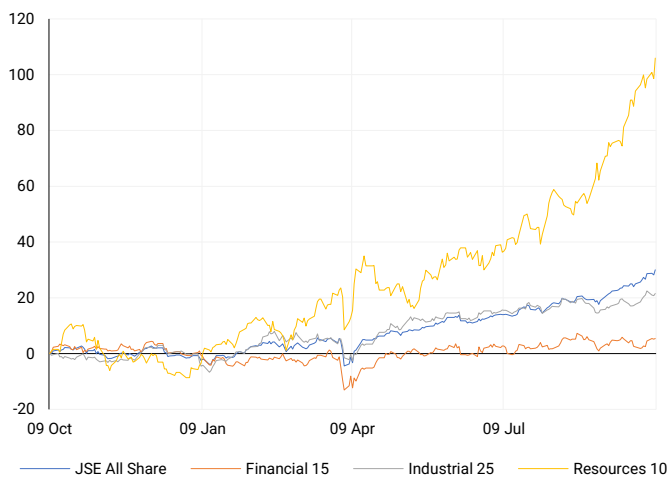
Shares of South African miners surged as gold topped \$4,000 an ounce, boosting Gold Fields, AngloGold Ashanti, and Harmony Gold by 2–3% on the JSE. At the Johannesburg Mining Indaba, Anglo American CEO Duncan Wanblad criticised two decades of restrictive exploration policy, noting the country's untapped mining potential. Deputy Finance Minister Ashor Sarupen warned that most municipalities, except Cape Town, face rising administrative costs, under-investment in infrastructure, and service delivery failures. Persistent electricity, water, and refuse issues have triggered violent protests, highlighting widespread management shortcomings.

**JSE ALL SHARE**

One-year


**LOCAL INDICES**

Normalised percentage performances


**LOCAL SENS ANNOUNCEMENTS**
**SELECTED RELEASE**
**Anglo American plc – Anglo American Strengthens Merger Outlook**

Anglo American reaffirmed its strategic rationale and synergy targets following Teck Resources' operational review. The findings largely align with Anglo American's pre-merger due diligence ahead of the 9 September 2025 announcement. The company supports Teck's measured ramp-up of the Quebrada Blanca (QB) project, drawing on experience from Quellaveco. Long-term value is anticipated from QB and the Collahuasi adjacency, with projected annual EBITDA uplift of US\$1.4 billion and US\$800 million in recurring pre-tax synergies, positioning the merger to create a stronger, more resilient business and enhanced shareholder value.

**AGL | +1.27% | Open : 64308 | High : 67032 | Low : 64308 | Close : 66270**
**FirstRand – FirstRand Addresses UK FCA Redress Scheme**

FirstRand issued a voluntary update on the UK FCA's 7 October 2025 consultative paper regarding motor finance commission redress. The group highlighted concerns that the scheme exceeds what it considers proportionate and may not fully reflect UK Supreme Court guidance on case-by-case assessment of unfairness. FirstRand intends to engage with the FCA promptly to resolve these issues and clarify data inconsistencies. Shareholders will be updated once the review concludes, potentially before the FCA's six-week consultation period, ensuring ongoing regulatory transparency and operational oversight.

**FSR | -3.59% | Open : 7925 | High : 8011 | Low : 7709 | Close : 7819**
**Alphamin Resources – Alphamin Reports Strong Q3 Production Growth**

Alphamin delivered robust Q3 2025 results, with contained tin production rising 26% quarter-on-quarter to 5,190 tonnes and sales increasing 12% to 5,143 tonnes. Full-year guidance was lifted to 18,000–18,500 tonnes from 17,500 tonnes, reflecting strong operational momentum. Q3 EBITDA is guided at US\$96 million, up 28% from Q2's US\$75 million, underpinned by higher output and stable pricing. The company paid an interim FY2025 dividend of CAD0.07 per share and received assay results from Mpama North and South drilling, consolidating its position as a leading global tin producer.

**APH | +2.43% | Open : 1427 | High : 1437 | Low : 1427 | Close : 1434**
**EXPECTED COMPANY REPORTING SCHEDULE**

COMPANY	CODE	RELEASE	DATE
Montauk Renewables	MKR	Quarterly	Thu, 09 Oct
Newpark REIT	NRL	Interim	Fri, 10 Oct
Equites Property Fund	EQU	Interim	Fri, 10 Oct
Montauk Renewables	MKR	Quarterly	Thu, 09 Oct
Newpark REIT	NRL	Interim	Fri, 10 Oct

**BANK AND OTHER SELECTED PREFERENCE SHARES**

COMPANY	CODE	CLOSE	CLEAN YIELD	NEXT LDT (Est.)
Investec Limited	INPR	9827	9.42	Tue, 10 Jun '25
Standard Bank	SBPP	9500	9.45	Wed, 03 Sept '25
Capitec	CPIP	10823	8.89	Wed, 17 Sept '25
Grindrod	GNDP	9510	10.87	Wed, 17 Sept '25
Netcare	NTCP	9499	10.06	Wed, 12 Nov '25
Discovery	DSBP	11898	9.77	Wed, 17 Sept '25

**LOCAL EQUITIES | JSE MID CAP COMPANIES** (Cents Per Share)

COMPANY	CODE	CLOSE	PREVIOUS	1D%	1M%	YTD%
Aspen Pharmicare Hldgs Ltd	APN	9610	9578	0.33	-6.70	-41.70
African Rainbow Min Ltd	ARI	19101	18799	1.61	8.53	27.01
AVI Ltd	AVI	9775	9753	0.23	3.98	-10.91
Barloworld Ltd	BAW	11949	11943	0.05	0.50	10.10
Bidvest Ltd	BVT	21688	21614	0.34	-0.57	-17.75
Boxer	BOX	7082	7057	0.35	4.89	9.97
Bytes Technology Grp PLC	BYI	9189	9297	-1.16	-8.86	-6.53
Capital&Counties Prop plc	CCO	3180	3211	-0.97	-5.64	1.69
Clicks Group Ltd	CLS	35625	35035	1.68	-1.24	-4.52
Dis-Chem Pharmacies Ltd	DCP	3274	3213	1.90	-0.15	-9.31
Exxaro Resources Ltd	EXX	17133	17041	0.54	-7.30	8.47
Fortress Real Est INV B	FFB	2344	2305	1.69	7.03	15.70
Growthpoint Prop Ltd	GRT	1524	1517	0.46	8.01	19.72
Harmony GM Co Ltd	HAR	32250	31436	2.59	25.70	114.03
Hammerson plc	HMN	6555	6650	-1.43	-2.08	-1.72
Investec Ltd	INL	12770	12709	0.48	-6.94	2.13
Investec plc	INP	12778	12789	-0.09	-6.59	0.85
Italtile Ltd	ITE	950	951	-0.11	-14.03	-32.81
Life Healthc Grp Hldgs Ltd	LHC	1199	1200	-0.08	-9.58	-26.80
MultiChoice Group Ltd	MCG	12101	12451	-2.81	-1.43	12.05
Montauk Renewables Inc	MKR	4077	4189	-2.67	17.36	-50.88
Mr Price Group Ltd	MRP	21325	21081	1.16	1.63	-27.77
Momentum Met Hldgs Ltd	MTM	3308	3380	-2.13	-2.33	9.32
Ninety One Plc	N91	4819	4790	0.61	6.50	40.17
Nedbank Group Ltd	NED	23194	22746	1.97	7.88	-17.67
Northam Platinum Hldgs Ltd	NPH	30571	28846	5.98	30.18	213.84
NEPI Rockcastle N.V.	NRP	13871	13850	0.15	-4.03	0.52
Netcare Limited	NTC	1432	1425	0.49	2.36	-4.02
Ninety One Limited	NY1	4640	4628	0.26	6.18	33.95
Old Mutual Limited	OMU	1302	1288	1.09	-1.81	4.08
OUTsurance Group Ltd	OUT	7361	7410	-0.66	1.88	10.69
Pick n Pay Stores Ltd	PIK	2679	2553	4.94	1.13	-12.74
Pepkor Holdings Ltd	PPH	2496	2492	0.16	-0.48	-13.78
Quilter Plc	QLT	3996	3839	4.09	7.85	12.37
Redefine Properties Ltd	RDF	513	513	0.00	4.27	12.75
Remgro Ltd	REM	17148	16911	1.40	1.47	10.56
Resilient REIT Limited	RES	6682	6700	-0.27	3.28	13.72
Reinet Investments S.C.A	RNI	50270	50423	-0.30	-3.51	12.42
Sappi Ltd	SAP	1940	2033	-4.57	-32.71	-60.62
Santam Limited	SNT	38000	37937	0.17	-8.86	-3.22
The Spar Group Ltd	SPP	10467	10235	2.27	-0.19	-28.35
Sirius Real Estate Ltd	SRE	2214	2234	-0.90	-4.90	20.33
Tiger Brands Ltd	TBS	31996	31700	0.93	5.95	10.71
Transaction Capital Ltd	TCP	97	96	1.04	-6.73	-60.25
The Foschini Group Limited	TFG	11242	11197	0.40	4.30	-33.08
Thungela Resources Ltd	TGA	8531	8617	-1.00	-8.82	-36.19
Telkom SA SOC Ltd	TKG	5477	5400	1.43	10.02	56.62
Truworths Int Ltd	TRU	5549	5538	0.20	-3.98	-46.44
Woolworths Holdings Ltd	WHL	5256	5222	0.65	-0.59	-15.70
Zeda Limited	ZZD	1300	1295	0.39	1.96	-2.26

**LOCAL EQUITIES | JSE SMALL CAP COMPANIES** (Cents Per Share)

COMPANY	CODE	CLOSE	PREVIOUS	1D%	1M%	YTD%
ArcelorMittal SA Limited	ACL	144	146	-1.37	28.57	7.46
AdvTECH Ltd	ADH	3569	3440	3.75	12.02	5.47
Altron Limited A	AEL	1906	1922	-0.83	2.69	-10.31
AECI Limited	AFE	9686	9600	0.90	-8.37	10.80
Alexander Forbes Grp Hldgs	AFH	780	760	2.63	-1.14	-4.29
Afrimat Limited	AFT	4238	4362	-2.84	13.01	-40.27
Adcock Ingram Hldgs Ltd	AIP	7277	7246	0.43	0.72	8.61
Astral Foods Ltd	ARL	20780	20670	0.53	1.58	11.12
Attacq Limited	ATT	1413	1445	-2.21	-4.27	1.87
Brait PLC	BAT	205	205	0.00	-1.44	-0.97
Blue Label Telecoms Ltd	BLU	1237	1221	1.31	-7.76	111.82
Burstone Group	BTN	835	832	0.36	-0.12	-11.17
Coronation Fund Mngrs Ld	CML	4639	4605	0.74	5.58	18.46
Curro Holdings Limited	COH	1253	1223	2.45	6.64	-3.98
Cashbuild Ltd	CSB	13945	13990	-0.32	-1.10	-34.10
DRD Gold Ltd	DRD	5128	5008	2.40	36.75	210.22
Dateatec Ltd	DTC	6889	6730	2.36	15.09	38.14
Emira Property Fund Ltd	EMI	1320	1320	0.00	12.53	21.10
Equites Prop Fund Ltd	EQU	1625	1609	0.99	-2.93	10.54
Famous Brands Ltd	FBR	5352	5200	2.92	-5.69	-22.43
Fairvest Limited B	FTB	594	587	1.19	10.00	24.53
Grindrod Ltd	GND	1541	1520	1.38	-5.81	28.85
Hosken Cons Inv Ltd	HCI	13360	13103	1.96	11.28	-18.54
Hudaco Industries Ltd	HDC	18245	18200	0.25	1.90	-15.53
Hyprop Inv Ltd	HYP	4614	4810	-4.07	0.30	-0.71
JSE Ltd	JSE	13085	12928	1.21	2.23	8.39
KAP Industrial Hldgs Ltd	KAP	152	152	0.00	-16.02	-50.49
Karoo Ltd	KRO	94766	98199	-3.50	2.63	8.93
PSG Konsult Limited	KST	2400	2410	-0.41	7.91	22.32
Libstar Holdings Ltd	LBR	470	483	-2.69	21.45	8.05
Lighthouse Properties plc	LTE	785	779	0.77	-1.26	-2.24
Industrials REIT Limited	MLI	43.5	43	1.16	-1.14	67.31
MAS P.L.C	MSP	2191	2165	1.20	6.51	-5.97
Metair Investments Ltd	MTA	654	635	2.99	-14.51	-33.60
Motus Holdings Ltd	MTH	10602	10620	-0.17	-2.73	-12.75
Murray & Roberts Hldgs	MUR	110	110	0.00	0.00	0.00
Oceana Group Ltd	OCE	5200	5025	3.48	0.25	-22.94
Omnia Holdings Ltd	OMN	7417	7293	1.70	1.53	-5.03
Pan African Resource plc	PAN	2131	2094	1.77	16.90	160.20
PPC Limited	PPC	517	519	-0.39	-2.64	0.39
Raubex Group Ltd	RBX	4409	4210	4.73	4.63	-16.81
RFG Holdings Limited	RFG	1585	1591	-0.38	-3.06	-23.39
Reunert Ltd	RLO	5515	5400	2.13	0.09	-26.47
SA Corp Real Estate Ltd	SAC	330	328	0.61	7.14	13.01
Super Group Ltd	SPG	1420	1385	2.53	1.07	-51.86
Stor-Age Prop REIT Ltd	SSS	1628	1589	2.45	3.23	4.49
Southern Sun LTD	SSU	897	878	2.16	3.94	-1.21
Sun International Ltd	SUI	4095	4171	-1.82	-10.32	-5.86
Tharisa plc	THA	2340	2313	1.17	6.12	44.27
Tsogo Sun Gaming Ltd	TSG	668	646	3.41	3.57	-34.51
Vukile Property Fund Ltd	VKE	2221	2195	1.18	4.22	23.59
Wilson Bayly Hlm-Ovc Ltd	WBO	15050	14947	0.69	-11.67	-35.48

**10-YEAR BOND YIELD | SELECTED ITEMS** (Basis Point Change)

REGION	YIELD	1D	1M	1Y
United States	4.12%	0	3	5
United Kingdom	4.71%	0	9	53
Germany	2.68%	0	2	42
Japan	1.68%	0	12	76
South African 10Y	9.09%	-9	-40	-8

**GLOBAL INTEREST RATES | SELECTED ITEMS**

REGION	DATE CHANGED	CURRENT RATE
United States	Sep '25	4.00% - 4.25%
United Kingdom	Aug '24	4.00%
European	Jun '25	2.15%
SA Repo Rate	Jul '25	7.00%
SA Prime Rate	Jul '25	10.50%

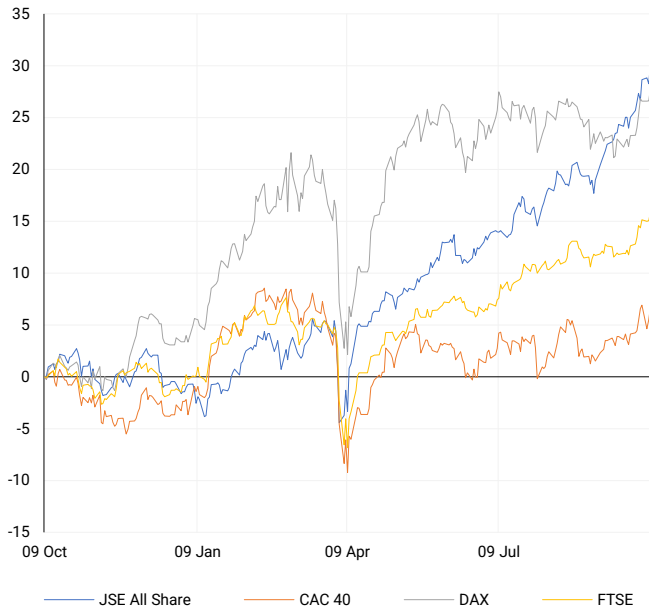
**SOUTH AFRICAN 10-YEAR**

2024 vs 2025 to date



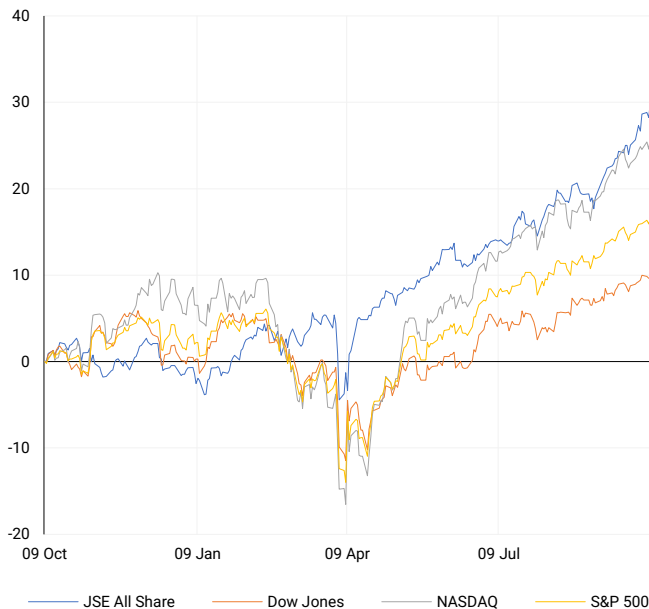
## EUROPEAN INDICES

Normalised percentage performances



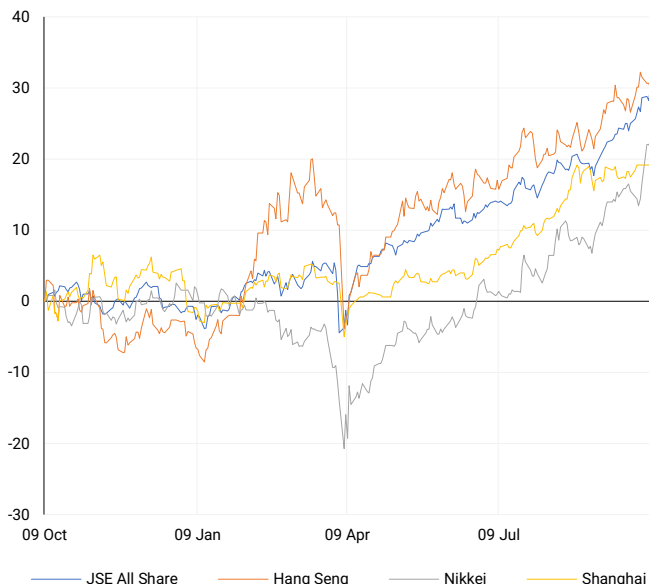
## AMERICAN INDICES

Normalised percentage performances



## ASIAN INDICES

Normalised percentage performances

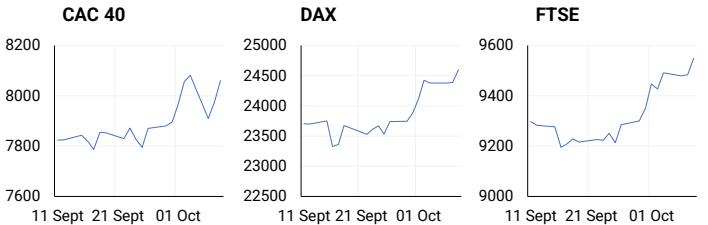


## EUROPEAN MARKET SUMMARY

### SELECTED ITEMS

European shares climbed to record highs, led by French and Spanish gains and a steel rally following EU import quota cuts. The Stoxx 600 rose 0.8%, French stocks gained 1.1%, and Spain hit levels unseen since 2007; Germany's DAX closed near a three-month peak. Banks led the rally, supported by Lloyds' smaller-than-expected motor finance compensation. Optimism was underpinned by Germany's revised 2025 growth forecast of 0.2% and easing French political uncertainty, with caretaker PM Sebastien Lecornu suggesting a potential year-end budget deal, averting a snap election.

EUROPEAN INDICES	CLOSE	PREVIOUS	1D%	5D%	1M%	YTD%
CAC 40	8060.13	7974.85	1.07	1.17	4.21	9.20
DAX 30	24597.13	24385.78	0.87	2.01	3.32	23.55
Eurostoxx 50	5644.70	5629.70	0.27	1.05	5.20	15.29
FTSE	9548.87	9483.58	0.69	1.08	3.55	16.83



## AMERICAN MARKET SUMMARY

### SELECTED ITEMS

U.S. equities advanced as technology shares, particularly AI-focused megacaps, drove gains. The Nasdaq led with all-time closing highs, alongside the S&P 500; the Dow was largely flat. Gold surpassed \$4,000 per ounce as investors sought safe-haven assets amid geopolitical and domestic risks. Federal Reserve minutes showed a divided committee, concerned about inflation but open to easing policy later this year. With the government shutdown limiting economic data, investors now look to the upcoming third-quarter earnings season for guidance on the outlook for interest rates and broader market direction.

AMERICAN INDICES	CLOSE	PREVIOUS	1D%	5D%	1M%	YTD%
Dow Jones	46601.78	46602.98	0.00	0.35	2.39	9.54
Nasdaq	23043.38	22788.36	1.12	1.27	5.71	19.33
S&P 500	6753.72	6714.59	0.58	0.63	3.98	14.83
US VIX	16.30	17.24	-5.45	0.06	7.88	-6.05



## ASIAN MARKET SUMMARY

### SELECTED ITEMS

Asian stocks rose, powered by AI-related momentum and HSBC's Hang Seng Bank privatisation, which lifted shares 29.5% and valued the bank at over \$37 billion. Tata Group faced internal governance scrutiny, with Indian ministers intervening to stabilise the \$180-billion empire. Indonesia engaged China to restructure debt for its \$7.3 billion high-speed rail project. Meanwhile, Japanese real wages fell for the eighth consecutive month in August as inflation outpaced nominal pay, highlighting ongoing pressure on household purchasing power and underscoring broader regional economic challenges amid global uncertainty.

ASIAN INDICES	CLOSE	PREVIOUS	1D%	5D%	1M%	YTD%
Hang Seng	26829.46	26957.77	-0.48	-0.10	4.66	33.75
Nikkei 225	47734.99	47950.88	-0.45	7.15	9.37	19.65
Shanghai	3882.78	3882.78	0.00	0.00	1.46	15.84



## COMMODITIES MARKET SUMMARY

### SELECTED ITEMS

Gold eased slightly after breaching \$4,000 per ounce, as investors booked profits amid geopolitical and economic uncertainty. Silver reached a record high, boosted by gold's momentum and safe-haven demand. Oil prices fell after Israel and Hamas agreed on the first phase of a Gaza ceasefire, reducing regional tensions, while a stronger U.S. dollar weighed on commodities. The ceasefire, including plans for hostage release, lowered the risk of wider conflict, stabilising energy and precious metals markets following recent volatility driven by geopolitical risks and investor demand for secure assets.

COMMODITY	LAST	CLOSE	% CHG	1D%	5D%	YTD%
Brent Crude	---	66.04	N/A	0.46	0.98	-11.75
Gold	---	4041.22	N/A	1.42	4.54	53.98
Palladium	---	1442.00	N/A	6.54	14.53	62.30
Platinum	---	1666.02	N/A	2.35	5.85	86.46
Silver	---	48.89	N/A	2.19	3.34	69.29

## PLATINUM

One-year



## GOLD

One-year



CURRENCY PAIR	LAST	CLOSE	% CHG	1D%	5D%	YTD%
USDZAR	---	17.16	N/A	-0.38	-0.46	-8.94
GBPZAR	---	23.00	N/A	-0.55	-1.01	-2.69
EURZAR	---	19.95	N/A	-0.61	-1.31	2.14
AUDZAR	---	11.30	N/A	-0.31	-0.86	-3.23
EURUSD	---	1.16	N/A	-0.24	-0.86	12.33
USDJPY	---	152.69	N/A	0.52	3.82	-2.90
GBPUSD	---	1.34	N/A	-0.15	-0.54	7.12
USDCHF	---	0.80	N/A	0.45	0.62	-11.64

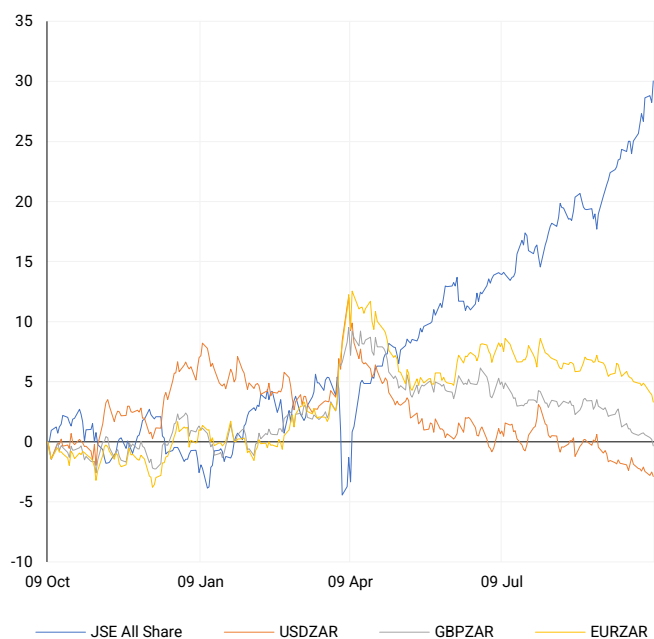
## CURRENCY MARKET SUMMARY

### SELECTED ITEMS

The U.S. dollar remained steady, on track for its strongest weekly gain in nearly a year, aided by a weak yen after Japan's leadership change. Sanae Takaichi's rise to head of the Liberal Democratic Party, positioning her to become Japan's first female prime minister, raised expectations for increased spending and loose monetary policy. The euro remained subdued amid France's political crisis following PM Sebastian Lecornu's resignation. Political instability in both Japan and France, combined with the U.S. government shutdown, has pushed investors toward safe-haven assets such as gold.

## CURRENCY PAIRS vs JSE ALL SHARE

Normalised percentage performances



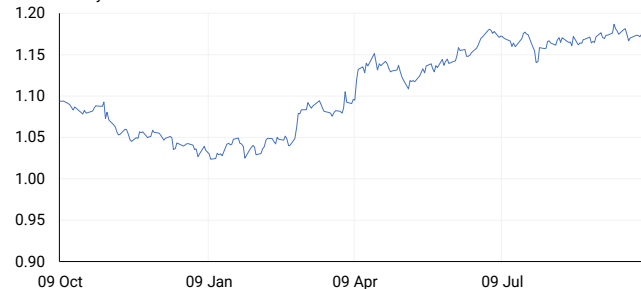
## USDZAR

One-year



## EURUSD

One-year



SOURCES | JSE, IRESS, MONEYWEB, CNBC, BBC, CNN

**Disclaimer:** This note is prepared for Sanlam Private Wealth (Pty) Ltd, by K2013143132 (Pty) Ltd trading as ThompsonGreen. ThompsonGreen is an independent company contracted to Sanlam Private Wealth (Pty) Ltd. The views expressed in this note are those of ThompsonGreen and/or its analysts and not necessarily the views of Sanlam Private Wealth (Pty) Ltd, Sanlam or any officer or agent thereof. K2013143132 (Pty) Ltd trading as ThompsonGreen is a research house and not a registered broker, financial adviser or financial service provider. Our editors and customer services teams also do not give personal investment advice. The information in this document is general advice only and may not be appropriate to your particular investment objectives, financial situation or particular needs. Before investing, or if you are in any doubt about your personal situation, you should seek professional advice from a stockbroker or independent financial adviser authorised by the Financial Sector Conduct Authority.