

GLOBAL OVERVIEW | SELECTED INDICES

SOUTH AFRICAN INDICES	CLOSE	PREVIOUS	1D%	5D%	1M%	YTD%
All Share	67054,0	67160,4	-0,16	-0,27	-2,01	12,87
Top 40	61303,2	61409,5	-0,17	-0,47	-2,56	12,73
Financial 15	12027,3	12200,2	-1,42	-1,14	-5,65	-0,27
Industrial 25	87439,6	87500,8	-0,07	-2,22	0,32	12,25
Resource 10	68453,1	68335,9	0,17	2,30	-4,64	18,89
Mid Cap	70759,5	71360,2	-0,84	0,73	0,40	10,13
Small Cap	54696,0	54684,8	0,02	1,72	6,03	23,03
Gold	3702,6	3702,6	---	---	-1,25	-3,51
Platinum	116,2	116,2	---	---	-4,10	25,61
Banks	6773,9	6907,0	-1,93	-2,11	-6,93	-1,09
General Retailers	5892,3	5893,7	-0,02	-0,39	9,43	26,70
Property (J253) - Total Retn	1341,9	1339,7	0,17	2,06	0,91	9,14

AMERICAN INDICES	CLOSE	PREVIOUS	1D%	5D%	1M%	YTD%
Dow Jones	33503,6	33446,3	0,17	1,06	5,35	9,47
Nasdaq	13829,3	13688,8	1,03	2,59	9,68	7,30
S&P 500	4097,2	4080,0	0,42	1,92	7,22	9,08
Dollar Index	92,1	92,4	-0,36	-0,88	-0,37	2,41
US VIX	17,0	17,2	-1,22	-2,19	-33,45	-25,49

EUROPEAN INDICES	CLOSE	PREVIOUS	1D%	5D%	1M%	YTD%
CAC 40	6165,7	6130,7	0,57	1,03	4,45	11,07
DAX 30	15202,7	15176,4	0,17	0,63	5,71	10,82
Eurostoxx 50	3977,8	3956,8	0,53	0,81	5,70	11,97
FTSE	6942,2	6885,3	0,83	3,04	3,32	7,46

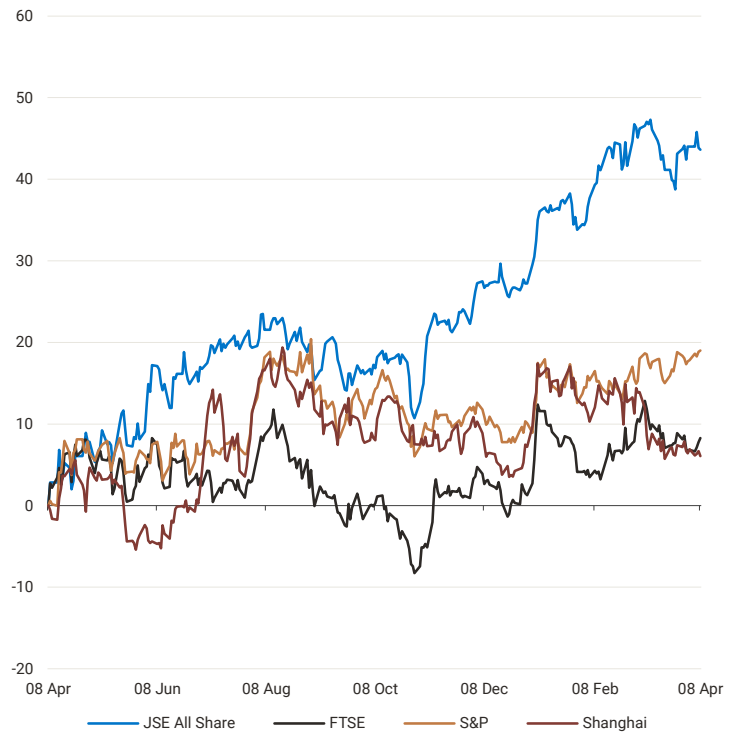
ASIAN INDICES	CLOSE	PREVIOUS	1D%	5D%	1M%	YTD%
Hang Seng	29008,1	28674,8	1,16	0,24	1,64	6,53
Nikkei 225	29709,0	29730,8	-0,07	1,09	3,36	8,25
Shanghai	3482,6	3479,6	0,08	0,47	1,79	0,27

EARLY MORNING INDICATORS	LAST	CLOSE	% CHG	1D%	5D%	YTD%
Tencent (China)	620,0	620,0	0,00	-1,51	-5,20	9,54
BHP Billiton (Australia)	4649,0	4706,0	-1,21	2,64	3,09	13,81

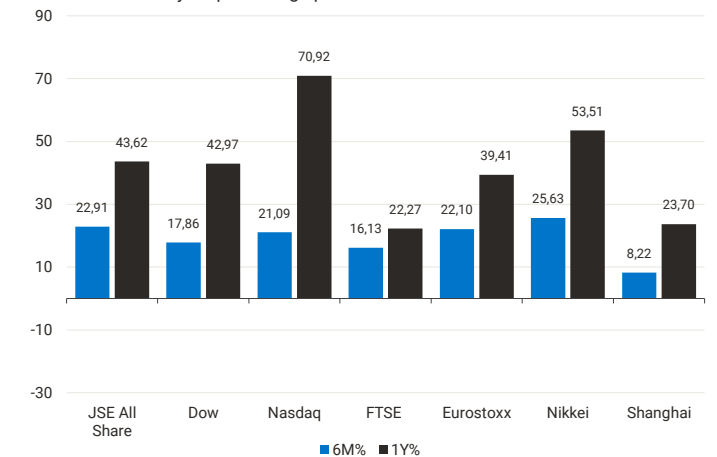
INTERNATIONAL INDICES

normalised percentage performances (in rand terms)



INTERNATIONAL INDICES

6-month & 1-year percentage performances



INTERNATIONAL ECONOMIC CALENDAR | SELECTED EVENTS

TIME	AREA	TODAY'S EVENTS & RELEASES	PERIOD	EXP.	PREV.
8:00	RSA	Foreign Exchange Reserves	Mar	---	\$53.79B
8:00	EUR	German Industrial Production m/m	Feb	1.6%	-2.5%
8:00	EUR	German Trade Balance	Feb	23.4B	22.2B
14:30	USD	Core PPI m/m	Mar	0.2%	0.2%
14:30	USD	PPI m/m	Mar	0.5%	0.5%

TIME	AREA	PREVIOUS SESSION'S RELEASES	PERIOD	ACTL.	EXP.
11:00	EUR	PPI m/m	Feb	0.5%	0.6%
13:00	RSA	Manufacturing Production YoY	Feb	-2.1%	-3.4%
13:00	RSA	Manufacturing Production MoM	Feb	-1.2%	0.5%
14:30	USD	Unemployment Claims	---	744K	682K

LOCAL EQUITIES | JSE ALL SHARE COMPANIES

cents per share

BEST ONE-DAY % PERFORMERS	CODE	CLOSE	1D%	5D%	YTD%
Nampak	NPK	361	6,49	12,81	80,50
Barloworld	BAW	9675	5,74	8,77	6,20
Famous Brands	FBR	6191	4,93	11,23	26,48
PPC	PPC	302	3,42	2,72	118,84
MAS Real Estate Inc.	MSP	1663	2,97	3,94	30,43
African Rainbow Min	ARI	28812	2,94	4,48	10,01
Harmony GM Co	HAR	7156	2,89	3,85	-0,06
DRD Gold	DRD	1452	2,61	1,33	-19,20

WORST ONE-DAY % PERFORMERS	CODE	CLOSE	1D%	5D%	YTD%
Cartrack Holdings	CTK	5400	-6,09	-16,91	10,20
Textainer Group	TXT	40163	-5,60	-3,48	40,93
Liberty Holdings	LBH	5884	-3,54	3,17	-5,07
Massmart Holdings	MSM	5311	-3,44	-5,38	26,39
Nedbank Group	NED	13747	-2,94	-2,66	6,17
Clicks Group	CLS	23756	-2,77	0,65	-5,98
Coronation Fund Mngrs	CML	5358	-2,58	-2,28	24,11
Truworths Int	TRU	4779	-2,57	-0,25	29,69

JSE ALL SHARE INDEX

2021 vs 2020



DIVIDEND DATA | SELECTED JSE ALL SHARE COMPANIES

Last date to trade 13 Apr

COMPANY	CODE	DIVIDEND	COMPANY	CODE	DIVIDEND
Rand Merchant	RMI	22.5 ZARc	ADvTECH	ADH	20 ZARc
Metair	MTA	75 ZARc	Nedbank	NBKP	29.46 ZARc
Growthpoint	GRT	58.5 ZARc	Resilient REIT	RES	202.7 ZARc
Lighthouse Capital	LTE	1.575 EURc	Standard Bank	SBK	240 ZARc
AVI	AVI	160 ZARc	Harmony Gold	HAR	110 ZARc

## LOCAL EQUITIES | JSE LARGE CAP COMPANIES

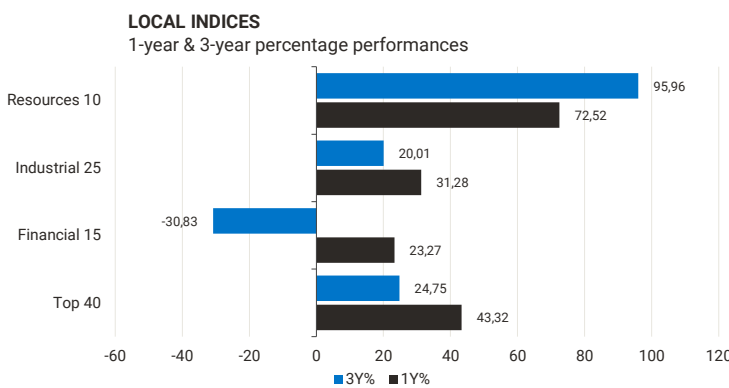
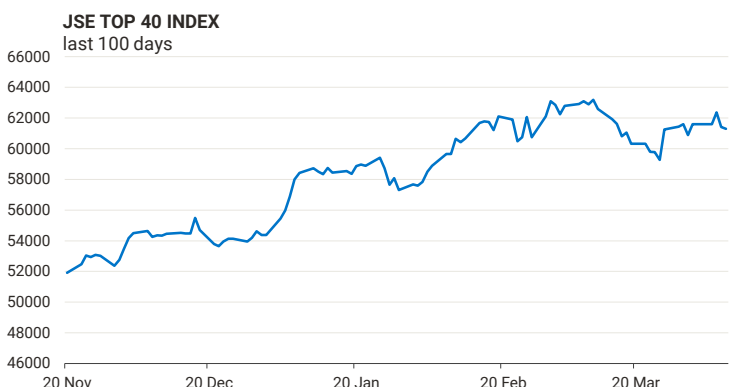
cents per share

COMPANY	CLOSE	PREVIOUS	1D%	5D%	1M%	YTD%
Absa Group	12210	12501	-2,33	-1,67	-5,28	1,87
Anglo American plc	60900	59861	1,74	4,38	-4,00	25,57
Anglo American Plat	216075	217610	-0,71	0,38	3,61	49,72
Anglogold Ashanti	32265	31990	0,86	-3,35	-3,83	-5,80
Anheuser-Busch InBev SA N	93796	92500	1,40	1,65	-0,29	-9,72
BHP Group Plc	42864	43373	-1,17	2,36	-9,76	10,17
BID Corporation	28760	29128	-1,26	0,55	-8,70	9,34
British American Tob plc	56501	55403	1,98	2,76	1,47	3,59
Bidvest	17312	17608	-1,68	0,83	-5,02	10,25
Compagnie Fin Richemont	14505	14635	-0,89	1,59	-0,76	10,64
Capitec Bank	136268	138331	-1,49	-1,97	1,54	-4,88
Discovery	13550	13684	-0,98	2,17	-5,50	-11,75
Firstrand	4972	5064	-1,82	-2,70	-8,85	-2,59
Gold Fields	14650	14532	0,81	-0,83	4,12	6,49
Glencore plc	5811	5865	-0,92	0,83	-5,85	24,09
Impala Platinum	29006	28579	1,49	4,63	4,04	43,67
Investec	4360	4465	-2,35	-0,23	-1,98	19,00
Investec plc	4533	4646	-2,43	-0,13	-3,39	20,40
Kumba Iron Ore	62200	61150	1,72	1,63	-5,02	-0,13
Mondi plc	37750	37887	-0,36	-1,48	0,10	10,02
MTN Group	8864	8685	2,06	3,70	15,87	47,27
Ninety One Plc	4904	4890	0,29	1,36	4,34	7,52
Nedbank Group	13747	14164	-2,94	-2,66	-2,49	6,17
Naspers -N-	350336	348500	0,53	-5,80	0,01	16,03
NEPI Rockcastle Plc	9390	9490	-1,05	-0,25	-3,20	0,43
Ninety One	4900	4875	0,51	2,08	5,38	11,36
Old Mutual	1346	1339	0,52	8,29	0,45	13,20
Prosus N.V.	164003	162232	1,09	-5,17	-3,81	2,11
Remgro	10520	10600	-0,75	1,15	-0,68	9,36
RMB	169	169	0,00	-5,06	15,75	20,71
Reinet Investments S.C.A	28523	28637	-0,40	0,57	-0,13	3,49
Standard Bank Group	12185	12403	-1,76	-1,91	-12,65	-4,12
Shoprite	15098	15278	-1,18	-3,34	11,10	7,84
Sanlam	5582	5631	-0,87	-4,63	-9,98	-4,99
Sasol	21751	21870	-0,54	-2,21	-3,99	62,41
Sibanye Stillwater	6708	6722	-0,21	1,82	-8,22	11,80
Vodacom Group	12593	12635	-0,33	0,34	0,61	1,24

## SOUTH AFRICAN MARKET COMMENTARY

### SELECTED HEADLINES

The Johannesburg All-Share index closed 0.16% lower, while the Top-40 index fell 0.17%. Grocery retailer Pick n Pay fell 0.60% after it flagged an up to 25% drop in annual headline earnings per share due to COVID-19 lockdown restrictions and extra costs. Equities fell after local manufacturing output contracted 2.1% year on year in February, more than expected.



## EXPECTED COMPANY REPORTING SCHEDULE

COMPANY	CODE	RELEASE	DATE
Trustco	TTO	Final	09 Apr
Royal Bafokeng Plat.	RBP	AGM	09 Apr
Capitec	CPI	Final	13 Apr
EOH	EOH	Interim	14 Apr
Bell Equipment	BEL	Final	14 Apr

## BANK AND OTHER SELECTED PREFERENCE SHARES

ISSUER	CODE	CLOSE	CLEAN YIELD	APPROX. NEXT LDT
Nedbank	NBKP	780	7,81	31 Mar '21
Investec Bank	INLP	6800	8,83	02 Jun '21
Investec Limited	INPR	6350	8,83	02 Jun '21
Standard Bank	SBPP	6900	8,27	14 Apr '21
Firstrand Bank	FSRP	6655	8,04	25 Aug '21
Absa	ABSP	61500	8,34	14 Apr '21
Imperial Holdings	IPLP	---	---	---
PSG	PGFP	6650	9,23	17 Mar '21
Capitec	CPIP	9850	6,13	17 Mar '21
Sasfin	SFNP	6860	9,16	24 Mar '21
Grindrod	GNDP	6680	9,82	24 Mar '21
Netcare	NTCP	6750	8,98	05 May '21
Discovery	DSBP	7700	9,57	10 Mar '21
Invicta	IVTP	6855	11,29	30 Jun '21

## SENS ANNOUNCEMENTS

### SELECTED RELEASES

#### PICK N PAY STORES LIMITED – Trading and Earnings Update

Shareholders are advised that Pick n Pay Stores Limited is in the process of finalising its financial results for the 52 weeks ended 28 February 2021 ("FY21"), which are due to be published on 21 April 2021. The financial year fell almost entirely within the National State of Disaster caused by Covid-19, and the Group expresses its profound thanks to all staff and franchise partners for their dedication and service throughout this unprecedented time. The Group is very pleased with its performance in this most difficult year. Once the disruption of Covid-19 is taken into account, the result will demonstrate a market-leading performance on core sales, and underlying strength and momentum in its quality of earnings:

Group turnover growth of 4.3% (3.1% like-for-like) was significantly impacted by the prohibitions on the sale of alcohol and other products for significant parts of the trading year, which resulted in an estimated R4 billion in lost sales. Despite this disruption, the Group delivered market-leading sales growth of 10.0% in its core food and grocery offer in South Africa.

Group earnings were affected by the margin impact of restrictions on the sale of alcohol and other products, and by once-off compensation costs arising from voluntary and other retrenchments under the Group's Project Future programme. Once these once-off impacts are taken into account, the comparable result demonstrates significant underlying positive momentum in the Group's performance.

The Group delivered turnover growth of 4.3% this year, accelerating from 2.6% in the first half of the year to 6.0% in the second half.

Move | -0.6% Open | 5455c Close | 5430c High | 5481c Low | 5295c

LOCAL EQUITIES | JSE MID CAP COMPANIES

cents per share

COMPANY	CODE	CLOSE	PREVIOUS	1D%	1M%	YTD%
AECI	AFE	9711	9905	-1,96	-2,14	11,62
Aspen Pharmacare	APN	14808	14971	-1,09	0,03	18,11
African Rainbow Min	ARI	28812	27988	2,94	2,55	10,01
Assore	ASR	0,3195	0,31	—	—	4,58
AVI	AVI	7571	7684	-1,47	0,28	3,40
Brait SE	BAT	269	276	-2,54	5,91	-27,88
Barloworld	BAW	9675	9150	5,74	0,52	6,20
Capital&Counties plc	CCO	3581	3567	0,39	-4,74	25,39
Clicks Group	CLS	23756	24432	-2,77	-5,35	-5,98
Coronation Fund Mngrs	CML	5358	5500	-2,58	5,99	24,11
Dis-Chem Pharmacies	DCP	2253	2305	-2,26	-1,18	7,23
Distell Group	DGH	12001	12000	0,01	0,26	26,27
EPP N.V.	EPP	1072	1075	-0,28	5,41	3,57
Exxaro Resources	EXX	17711	17775	-0,36	1,63	27,51
Fortress REIT A	FFA	1371	1378	-0,51	-0,51	0,44
Fortress REIT B	FFB	297	292	1,71	3,85	-1,33
Growthpoint Prop	GRT	1355	1355	0,00	-2,73	7,80
Harmony GM Co	HAR	7156	6955	2,89	9,74	-0,06
Hammerson plc	HMN	766	758	1,06	11,01	47,31
Hyprop Inv	HYP	2900	2867	1,15	-0,17	-1,76
Imperial Logistics	IPL	4946	4954	-0,16	9,79	32,42
Italtile	ITE	1630	1630	0,00	0,49	10,14
JSE	JSE	11500	11631	-1,13	0,11	2,22
KAP Industrial	KAP	432	432	0,00	-5,68	36,71
PSG Konsult	KST	936	930	0,65	4,00	4,00
Liberty Holdings	LBH	5884	6100	-3,54	-14,63	-5,07
Life Healthc Grp	LHC	1852	1852	0,00	1,20	10,11
MultiChoice Group	MCG	12216	12481	-2,12	-4,43	-8,84
Mediclinic Int plc	MEI	5975	5890	1,44	-2,29	4,94
Mr Price Group	MRP	19772	20043	-1,35	14,92	15,86
Massmart Holdings	MSM	5311	5500	-3,44	-1,83	26,39
MAS Real Estate Inc.	MSP	1663	1615	2,97	10,87	30,43
Motus Holdings	MTH	9340	9353	-0,14	8,43	66,79
Momentum Met	MTM	1763	1767	-0,23	2,80	11,87
Northam Platinum	NHM	26718	26865	-0,55	8,19	27,51
Netcare	NTC	1405	1389	1,15	-3,10	12,40
Pick n Pay Stores	PIK	5430	5463	-0,60	4,02	8,04
Pepkor Holdings	PPH	1596	1600	-0,25	9,77	17,09
PSG Group	PSG	6955	7050	-1,35	3,56	16,15
Quilter Plc	QLT	3266	3306	-1,21	3,85	6,25
RCL Foods	RCL	940	935	0,53	5,03	11,24
Redefine Properties	RDF	390	388	0,52	-3,70	17,12
Resilient REIT	RES	4567	4590	-0,50	-2,00	7,97
Reunert	RLO	5011	4993	0,36	7,05	38,43
Rand Merchant Inv	RMI	2999	3035	-1,19	-5,09	-6,43
Sappi	SAP	4940	4960	-0,40	5,11	50,52
Santam	SNT	24800	25124	-1,29	-3,78	-2,66
The Spar Group	SPP	19004	19300	-1,53	-1,99	0,26
Sirius Real Estate	SRE	1860	1840	1,09	-5,58	-3,63
Tiger Brands	TBS	20625	21155	-2,51	-4,65	-0,93
The Foschini Group	TFG	12515	12600	-0,67	18,32	22,32
Telkom SA SOC	TKG	4099	4157	-1,40	-5,64	33,47
Truworths Int	TRU	4779	4905	-2,57	-0,56	29,69
Tsogo Sun Gaming	TSG	680	674	0,89	9,68	33,33
Vukile Property Fund	VKE	924	901	2,55	13,65	15,50
Woolworths	WHL	4852	4974	-2,45	-3,31	22,71

LOCAL EQUITIES | JSE SMALL CAP COMPANIES

cents per share

COMPANY	CODE	CLOSE	PREVIOUS	1D%	1M%	YTD%
ADvTECH	ADH	1320	1319	0,08	10,00	38,95
Allied Electronics Corp A	AEL	1040	1053	-1,23	-8,93	-4,67
Alexander Forbes Grp	AFH	403	413	-2,42	-5,62	1,77
Afrimat	AFT	4515	4550	-0,77	-2,63	4,95
African Oxygen	AFX	2498	2498	—	—	0,73
Arrowhead Prop B	AHB	275	272	1,10	-2,83	18,53
African Rainbow Cap Inv	AIL	411	410	0,24	11,38	-7,85
Adcock Ingram	AIP	4510	4572	-1,36	1,17	-1,96
Astral Foods	ARL	15600	15398	1,31	16,71	11,83
Attacq	ATT	593	595	-0,34	9,61	19,32
Blue Label Telecoms	BLU	452	445	1,57	-3,00	17,10
Brimstone Inv Corp -N	BRN	645	645	0,00	0,47	-0,77
City Lodge Hotels	CLH	440	438	0,46	8,11	76,00
Curro Holdings	COH	1105	1108	-0,27	7,80	16,56
Cashbuild	CSB	31418	31500	-0,26	1,68	32,57
Cartrack Holdings	CTK	5400	5750	-6,09	-15,48	10,20
DRD Gold	DRD	1452	1415	2,61	3,27	-19,20
Datatec	DTC	2800	2838	-1,34	8,74	14,05
Emira Property Fund	EMI	931	917	1,53	12,99	39,79
Equites Prop Fund	EQU	1895	1890	0,26	0,26	9,10
Famous Brands	FBR	6191	5900	4,93	28,98	26,48
Grindrod	GND	480	481	-0,21	-3,61	-4,95
Hosken Cons Inv	HCI	6428	6400	0,44	2,85	16,87
Hudaco Industries	HDC	9950	9899	0,52	6,99	22,84
Hospitality Prop Fund B	HPB	275	275	—	—	-0,72
Investec Aus. Prop	IAP	1500	1495	0,33	-0,99	9,09
Investec Property Fund	IPF	1012	1000	1,20	10,96	11,09
Intu Properties plc	ITU	327,6	337,25	—	1,11	5,83
Liberty Two Degrees	L2D	444	453	-1,99	-10,30	4,47
Long 4 Life	L4L	375	372	0,81	2,74	13,98
Libstar Holdings	LBR	685	683	0,29	-0,44	8,21
Lewis Group	LEW	2968	3000	-1,07	8,32	32,80
Lighthouse Capital	LTE	885	870	1,72	14,94	29,58
Montauk Holdings	MNK	15503	15503	—	—	52,86
Mpact	MPT	1999	2000	-0,05	-0,05	44,33
Metair Investments	MTA	2191	2150	1,91	21,12	16,85
Murray & Roberts	MUR	1150	1170	-1,71	30,53	44,29
Nampak	NPK	361	339	6,49	14,60	80,50
Oceana Group	OCE	7064	7061	0,04	3,85	9,95
OCTODEC INVEST	OCT	734	733	0,14	-6,38	-2,39
Omnia Holdings	OMN	4986	4960	0,52	4,57	8,18
Pan African Resource plc	PAN	347	343	1,17	-3,34	-27,71
Peregrine Holdings	PGR	2105	2105	—	—	—
PPC	PPC	302	292	3,42	78,70	118,84
Royal Bafokeng Plat.	RBP	11140	11350	-1,85	9,51	70,39
Raubex Group	RBX	2960	2964	-0,13	15,04	37,67
RFG Holdings	RFG	1190	1174	1,36	2,32	-1,49
RDI REIT P.L.C	RPL	2400	2459	-2,40	-7,30	33,33
SA Corp Real Estate	SAC	216	213	1,41	18,68	24,86
Steinhoff Int N.V.	SNH	234	233	0,43	25,81	125,00
Super Group	SPG	2934	2980	-1,54	9,07	25,33
Stor-Age Prop REIT	SSS	1349	1360	-0,81	1,73	-0,44
Stenprop	STP	3000	2990	0,33	3,45	9,21
Sun International	SUI	1483	1469	0,95	-0,80	19,79
Spur Corporation	SUR	2000	2000	0,00	2,56	21,80
Transaction Capital	TCP	3019	3081	-2,01	12,19	21,29
Tsogo Sun Hotels	TGO	223	222	0,45	23,89	52,74
Textainer Group	TXT	40163	42546	-5,60	3,57	40,93
Wilson Bayly Hlm-Ovc	WBO	9900	9978	-0,78	-4,81	8,62
Zeder Inv	ZED	265	272	-2,57	-1,49	1,53

10-YEAR BOND YIELDS | SELECTED ITEMS

basis point change

REGION	YIELD	1D	1M	1Y
United States	1,63	1	11	91
United Kingdom	0,74	—	2	44
Germany	-0,34	—	-4	1
Japan	0,09	1	-2	9
South African 10-Year	9,29	-4	-21	-152

GLOBAL INTEREST RATES | SELECTED ITEMS

REGION	CURRENT RATE
United States	0,00%-0,25%
United Kingdom	0,10%
European	0,00%
SA Repo Rate	3,50%
SA Prime Rate	7,00%

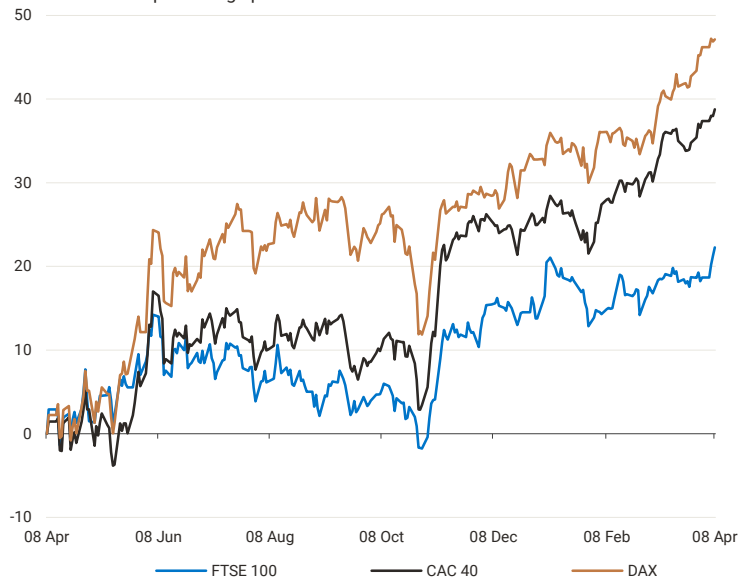
SOUTH AFRICAN 10-YEAR BOND YIELD 2021 v 2020



## GLOBAL MARKETS

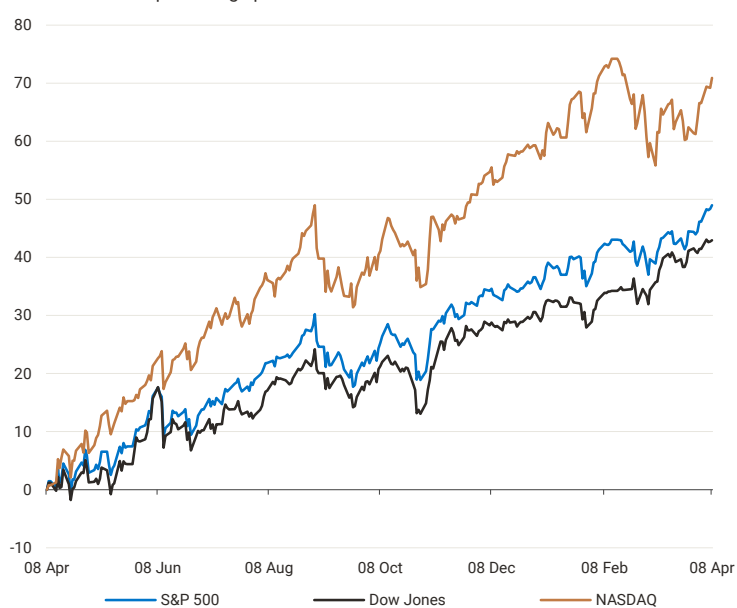
### EUROPEAN INDICES

normalised percentage performances



### AMERICAN INDICES

normalised percentage performances



### ASIAN INDICES

normalised percentage performances

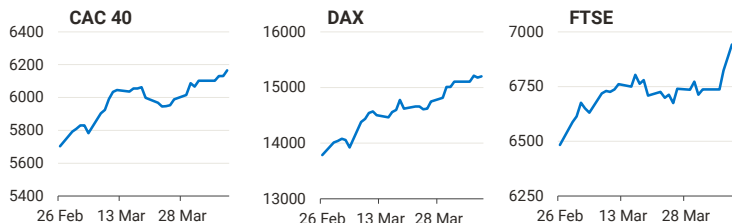


## EUROPEAN MARKET COMMENTARY

### SELECTED HEADLINES

European stocks closed higher on Thursday, tracking gains overseas following dovish comments from the US Federal Reserve. The pan-European Stoxx 600 gained 0.6% by the end of the session, having earlier hitting record highs. Food and beverage shares added 1.6% to lead the gains as most sectors and major bourses finished in positive territory. On the data front, German industrial orders rose in February on the back of strong domestic demand, data from the Federal Statistics Office showed.

EUROPEAN INDICES	CLOSE	PREVIOUS	1D%	6M%	1Y%	YTD%
CAC 40	6165,7	6130,7	0,57	25,53	38,78	11,07
DAX 30	15202,7	15176,4	0,17	16,57	47,13	10,82
FTSE	6942,2	6885,3	0,83	16,13	22,27	7,46



## AMERICAN MARKET COMMENTARY

### SELECTED HEADLINES

The S&P 500 rose to another record high on Thursday amid a strong rally in major technology stocks. Investors processed a worse-than-expected reading on the latest weekly jobless claims. A total of 744,000 Americans filed for unemployment benefits for the first time during the week ended April 3, the Labor Department said Thursday. Economists polled by Dow Jones expected first-time claims to total 694,000. Meanwhile, Federal Reserve chairman Jerome Powell signalled on Thursday that the economic rebound from the pandemic still has room to go as the recovery thus far hasn't been well-rounded.

AMERICAN INDICES	CLOSE	PREVIOUS	1D%	6M%	1Y%	YTD%
Dow Jones	33503,6	33446,3	0,17	17,86	42,97	9,47
Nasdaq	13829,3	13688,8	1,03	21,09	70,92	7,30
S&P 500	4097,2	4080,0	0,42	18,87	48,99	9,08



## ASIAN MARKET COMMENTARY

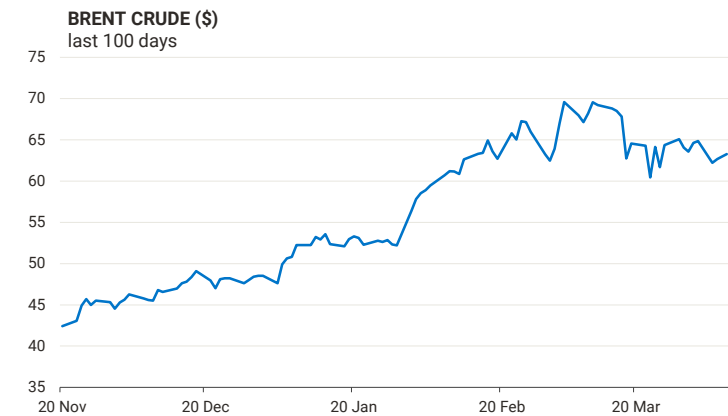
### SELECTED HEADLINES

Shares in Asia-Pacific were mostly lower this morning after the S&P 500 on Wall Street cruised to yet another record closing high overnight. Shares of Tencent-backed financial technology firm Linklogis surged more than 8% from their issue price in their Hong Kong debut on Friday. Shares of Chinese tech juggernaut Tencent edged fractionally higher. Data released this morning showed Chinese consumer and producer inflation rising in March as compared with a year ago.

ASIAN INDICES	LAST	CLOSE	% CHG	1D%	1Y%	YTD%
Hang Seng	28798,1	29008,1	-0,72	1,16	21,02	6,53
Nikkei 225	29885,4	29709,0	0,59	-0,07	53,51	8,25
Shanghai	3456,7	3482,6	-0,74	0,08	23,70	0,27



## COMMODITIES

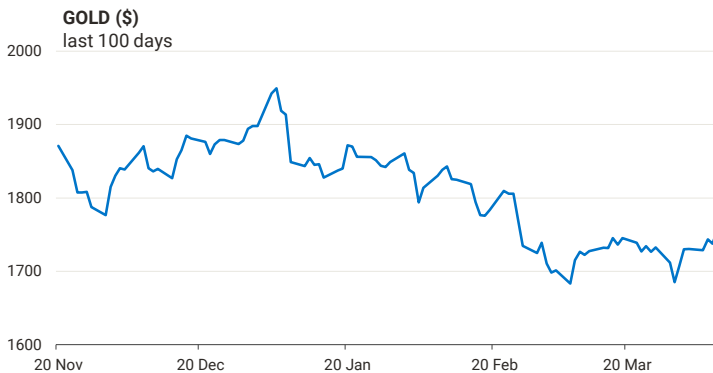


## COMMODITY MARKET COMMENTARY

### SELECTED HEADLINES

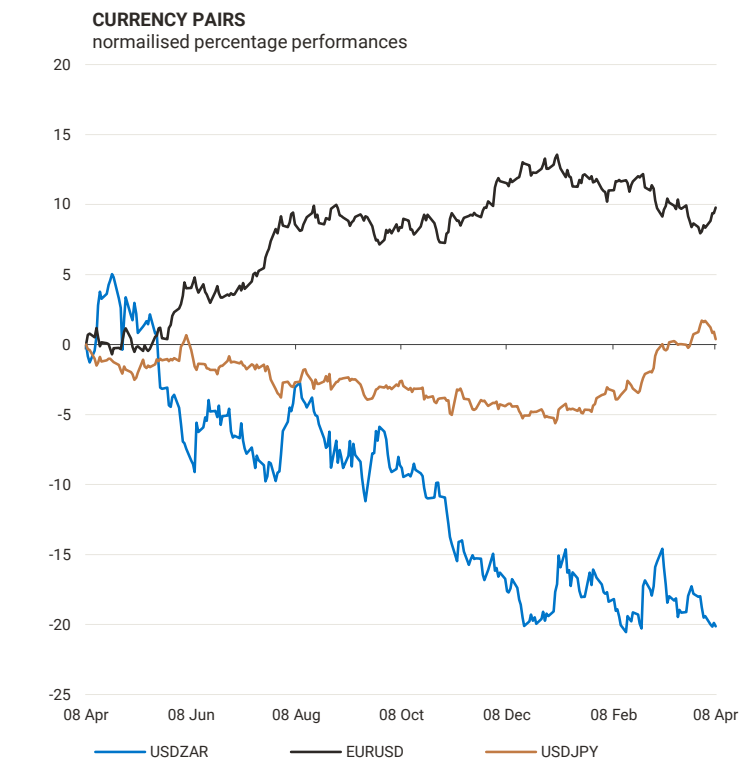
Gold was holding near a more than one-month peak this morning, with bullion set for a weekly gain of over 1%, as a weakness in the dollar and Treasury yields offered support along with a surprise jump in US jobless claims. Oil prices edged up this morning, supported by a weaker dollar, as investors weighed rising supplies and the impact on fuel demand from the COVID-19 pandemic.

COMMODITY	LAST	CLOSE	% CHG	1D%	1Y%	YTD%
Brent Crude (\$)	63,2	63,3	-0,21	0,46	87,94	22,35
Gold (\$)	1751,9	1756,0	-0,23	1,07	6,71	-7,48
Palladium	2632,0	2631,1	0,04	0,20	20,99	7,22
Platinum (\$)	1225,9	1233,2	-0,59	0,25	69,24	15,04
Silver	25,4	25,5	-0,37	1,22	70,28	-3,52



## CURRENCIES

CURRENCY PAIR	LAST	CLOSE	% CHG	1D%	1Y%	YTD%
USDZAR	14,5560	14,5308	0,17	-0,29	-20,12	-1,11
GBPZAR	19,9915	19,9418	0,25	-0,37	-11,45	-0,73
EURZAR	17,3279	17,3010	0,16	0,07	-12,39	-3,62
AUDZAR	11,1097	11,1109	-0,01	0,22	-1,98	-1,71
EURUSD	1,1905	1,1916	-0,09	0,36	9,78	-2,46
USDJPY	109,34	109,27	0,07	-0,52	0,38	5,79
GBPUSD	1,3735	1,3735	0,00	-0,02	10,93	0,50
USDCHF	0,9249	0,9241	0,08	-0,60	-4,96	4,39
AUDCAD	0,9596	0,9614	-0,19	0,13	10,09	-1,81



## CURRENCY MARKET COMMENTARY

### SELECTED HEADLINES

The rand rallied to its best level in six-weeks on Thursday, shaking off sluggish manufacturing data as global demand for high-yielding currencies was lifted by growing bets that lending rates in the United States will remain low. At the close, the rand was 0.29% firmer at R14.53 to the dollar. Meanwhile, the much-anticipated minutes of the Federal Reserve's March policy meeting, released on Wednesday, showed the bank's officials were still cautious about the risks of the pandemic and committed to providing monetary policy support.



Disclaimer: This note is prepared for Sanlam Private Wealth (Pty) Ltd, by K2013143132 (Pty) Ltd trading as Thompson Green. Thompson Green is an independent company contracted to Sanlam Private Wealth (Pty) Ltd. The views expressed in this note are those of Thompson Green and/or its analysts and not necessarily the views of Sanlam Private Wealth (Pty) Ltd, Sanlam or any officer or agent thereof. K2013143132 (Pty) Ltd trading as Thompson Green is a research house and not a registered broker, financial advisor or financial service provider. Our editors and customer services teams also do not give personal investment advice. The information in this document is general advice only and may not be appropriate to your particular investment objectives, financial situation or particular needs, so before investing or if in any doubt about your personal situation, you should seek professional advice from a stockbroker or independent financial adviser authorised by the Financial Services Board. We research our recommendations and articles thoroughly, but disclaim all liability for any inaccuracies or omissions in this publication and any trading or investment losses you may incur. Should you outperform inflation, we will take the credit. Thompson Green also acts as an Introducer of Business to Authorised Financial Services Providers. All accounts opened are held by the Authorised Registered Financial Services Provider and not Thompson Green. The information in this email is confidential and may be legally privileged. It is intended solely for the addressee. Access to this email by anyone else is unauthorised. If you are not the intended recipient, any disclosure, copying, distribution or any action taken or omitted to be taken in reliance on it, is prohibited and may be unlawful. If you are not the intended recipient please return the message to the sender and delete it from your records.